



Good Shepherd Parish

GoodShepherd@gsparishtlh.org

Parish Office: 850-893-1837 Rectory: 850-893-2381

Daily Mass: Monday - Friday 6:45 and 9 AM Saturday 9 AM

Saturday: Vigil 5:30 PM - 7:00 PM (La Santa Misa en Español)

Sunday Mass: 8 AM, 10:15 AM, Noon & 6 PM

**Reconciliation: Monday- Friday - 9:30 to 10 AM in Church and
Saturday- 9:30 - 10AM (after Mass) & 3 PM to 4 PM in room 201 of Parish Center.**



Sunday, November 2, 2025

THE COMMEMORATION OF ALL THE FAITHFUL DEPARTED

“For this is the will of my Father, that everyone who
sees the Son and believes in him may have eternal life,
and I shall raise him up on the last day.” - Jn 6:40

PARISH MINISTRY

Mass of Remembrance

Monday, November 3
7:00 PM in the Church

"Eternal rest grant unto them
O Lord and may perpetual light
shine upon them."



PARISH HEALING SERVICE

The next Healing Service is
Sun, Nov 2 at 7:30 PM in the Church.

If you or someone you know is in need of prayer for physical, spiritual, emotional or mental healing, or just to be strengthened, please come.



The Church Decorating ministry needs volunteers to assist with decorating the church during special liturgies, especially during the upcoming Advent/Christmas season.

To volunteer please contact Pastoral Associate, Saree Taylor at 850-893-1837 or taylor@gsparishtlh.org.



For Monsignor Slade Crawford at priest of our Diocese

To Denise Wood on the death of her mother, Peggy Wood

To Mike Kowalski and Pat Kowalski on the death of Pam Kowalski, wife and daughter-in-law

*Eternal rest grant them, O Lord.
May they rest in peace. Amen.*

WE PRAY FOR ALL WHO ARE ILL ESPECIALLY

Ann Ford	Chris Giaratelli	Pam Power	Anna
Barbara Bender	Andy Fagnoni	Helma Fire	John Ellis
Janneth Campost	Kim Hamrick	Dominic Geppenberger	
	Evon Mickler		

A complete list of prayer intentions is available in the parish office & vestibule.

Sponsored by the Friendship Circle of Good Shepherd



Arts & Crafts Sale

GOOD SHEPHERD CATHOLIC CHURCH
4665 THOMASVILLE RD., TALLAHASSEE, FL 32309

SATURDAY, NOVEMBER 8
8:30 AM TO 7:00 PM

SUNDAY, NOVEMBER 9
9:00 AM TO 2:00 PM

Proceeds from the Arts and Crafts Sale will be used to support our Parish Mission and the local Community.

Hand-quilted quilt will be raffled at 7:15 PM on November 9. Raffle tickets are \$2 each or 6 for \$10.

Beautifully hand crafted clothing, blankets, arts and crafts.
Delicious baked goods!
Cash or check **ONLY**
Admission is FREE!





CURRENT & NEW ALTAR SERVER TRAINING

Father Jacob invites you on
Nov 9 or 16 after the Noon Mass.

Who should attend?

Current and recently registered altar servers



Not registered for altar serving yet?

Scan here!



All children who have received their first Holy Communion are eligible.

We are so excited to see you!



The flowers on the altar last weekend are in memory of **Mary Fitzpatrick**.




You are invited!

**Good Shepherd's
Family Advent Dinner**
Friday, Nov 7 - 6:00 PM
Complimentary meal.
**Rediscover the beauty of the season while
reconnecting with the entire family.**
All are welcome!




Please RSVP by Nov 5
GoodShepherdParish.org/adventdinner



WINGS
Women Involved in
Good Shepherd

All women of the parish are invited to attend the meeting of Women Involved in Good Shepherd (WINGS) on **Tuesday, November 4**, in the lower level of the Parish Center. Fellowship begins at 6:30 PM, followed by the meeting at 7:00 PM. Please join us!



**Now Hiring:
Proven Manager to Serve as
Parish Administrator**

Good Shepherd is seeking a full-time Parish Administrator to assist in overseeing parish operations, including finance, administration, and personnel management. This leadership role supports our mission through sound stewardship, policy compliance, and collaboration among staff and parishioners. Practicing Catholics with a work history that includes leadership, management, and financial skills are encouraged to apply.

📄 Visit www.goodshepherdparish.org/job-openings for details and application instructions. If you have questions about the position before applying please contact Karen Minno at 850-893-1837.

BULLETIN DEADLINE

Nov 9 bulletin due on Monday, Nov 3 at Noon
Submit to: bulletin@gsparishtlh.org

SIGN UP TODAY - SATURDAY, NOVEMBER 22
Volunteers needed to build and deliver/setup!

GIVE THANKS

BUNK BED BUILD



Register to build



Register to help deliver

As part of our Giving Thanks by Giving Back week of service, Good Shepherd is once again partnering with Sleep in Heavenly Peace to build 25 bunk beds for children in our community who currently have no bed of their own.

We need a minimum of 80 volunteers to join us on Saturday, November 22, from 8:30 AM to approximately 11:30 AM, meeting in the lower-level parking lot.

In addition to the build event, 10 teams of volunteers will also help deliver and assemble the beds in the recipients' homes. Each team will be shown how to assemble the beds safely with just a few simple tools.

Teens are welcome to participate and may receive service hours, but all children must be accompanied by an adult.

Thank you for being part of this special project. Together, we'll help ensure no child in our town sleeps on the floor—and that they feel Christ's love through our shared service as we enter the Holidays.

Volunteers are welcome to sign up for BOTH the build and delivery. Sleep in Heavenly Peace does request that you register for each separately.

*Can't attend but want to help? We are now collecting NEW twin sized bedding in the Community Center so that each bed given will have sheets and blankets.

God bless you for Giving Thanks by Giving Back!

Come pray the Rosary in community all are welcome!



Monday - Friday
5:30 PM - Church

Monday - Saturday
8:30 AM
Children's Chapel (Cry Room)

Happy Birthday! Patricia Hall, 11/7, Rita Moeller, 11/16 and Muffet Crowell, 11/24

On Tuesday, 11/4 we will meet at Crystal River Seafood Restaurant at 2721 No. Monroe Street at 11:00 a.m.

All parishioners 55+ are welcome to attend! Questions? Call or text Pat at 850-459-1041 or hallp@comcast.net.



Are you ready to begin making payments toward your ***Building Together, Raising Generations Campaign*** Pledge? Getting started is simple – simply contact Elena VanLandingham, Business Manager, at 850-893-1837 or vanlandinghame@gsparishtlh.org, for your pledge fulfillment options.



Travel with Fr. Will Ganci and **Good Shepherd parishioners to Southern Italy on APRIL 15-25, 2026.**

We visit Naples, Pompeii, Sorrento, the Isle of Capri, the Amalfi Coast, and the Island of Sicily. The trip includes 4-star hotels, portage, all ground transportation, service charges, government taxes, 9 breakfasts, 2 lunches, 5 dinners, and all tour/excursion entrance fees. The cost is \$7110 per person/double occupancy including airfare in/out of Tallahassee.



Space is limited to 26 travelers and there are a few spaces left! There is also a 4-day optional trip to Rome in conjunction with this trip for an additional cost of \$2435 per person/double occupancy (airfare included). For more info, contact Joanne Kraynak at jkraynak020@comcast.net



Palliative care and hospice are precious and crucial instruments in the care of patients with serious and complex chronic or terminal illnesses, and they help provide comfort to both the patients and their families. While palliative care cannot entirely eradicate suffering from people's lives, it provides an authentic expression of human and Christian care—allowing us to 'remain' at the side of a suffering person, as the Blessed Mother and the beloved disciple remained at the foot of the Cross... The path of accompaniment until the moment of death must remain open, with appropriate care for body and soul customized to the personal needs of the patient.

Assist during Mass



Ushers
Greeters
Altar Servers
Lectors
Eucharistic Ministers



Volunteers needed for the Thanksgiving Day Meals Program.

Due to your past generosity, Good Shepherd provides Thanksgiving meals for over 2000 individuals annually. We need help with food donations, meal assembly, and delivery. Please visit the MOGS table in the courtyard after Mass or visit the Church during the week to pick up a volunteer card with instructions. If you're traveling, you can drop off specific food items before leaving. Cash donations are also welcome to offset food costs. For questions, contact Tim Shank at 850-566-1077.



Are you Divorced or becoming Divorced? Do you know someone in your family? A friend? A neighbor?

Good Shepherd will be offering a **women's twelve-week Surviving Divorce program from Jan. 6 - March 31, 2026.** Find comfort and counsel consistent with Catholic Church teachings.

To register please scan the QR code or visit: www.goodshepherdparish.org/divorce-recovery

The class will be held Tuesdays evenings from 645-845pm. in room 303 of the Parish Center.

Call or text Marguerite at 850-322-3004 for more information.



Please consider bringing one can or box of nonperishable food and placing it in the Good News Outreach cart before Mass each Sunday. Your generosity helps to feed people here in Tallahassee that are food insecure especially during this time.



Join us on Social Media
[@GoodShepTally](https://www.instagram.com/GoodShepTally)



BRINGING THE
Christmas Spirit
TO THOSE WHO NEED IT MOST

Like us on Facebook
@christmasconnection

Gift Donations

Once the Christmas Connection site has opened for the holiday season, donations of **NEW** gift items can be dropped off in person during hours of operation or at one of our **official drop-off locations**. Used items of any kind **WILL NOT** be accepted.

Wish List Items

- Children's Toys, Games, and Books
- Nonperishable Foods
- Baby Toys
- Baby Layette Items (bath towel, sleepers, receiving blankets, burp clothes)
- Baby Diapers and Wipes
- Bath and Beauty Sets
- Bicycles and Helmets
- Blankets (new; all sizes)
- Gift Cards (Amazon, Walmart, Target, Gas, Groceries, Restaurants)
- Teenage Gift Items (earbuds, movie passes, hair accessories)
- Tablets
- Toiletries
- Small Household Appliances (Coffee Pot, Toaster, Blender)
- Pots and Pan Sets
- Dish Sets
- Glassware
- Flatware
- Cooking Utensils
- Heaters
- Fans

All adoption, donation, and collection drive information will be available on our website in early November 2025!

www.TheChristmasConnection.org

Stop by the **Troop 118G table after Mass on Nov. 15th-16th** to check out their beautiful, fresh evergreen wreaths and holiday décor! □



If you can't see us in person, you can order online until November 16th at <https://sherwoodfundraiser.com/Troop118G>

These make the *perfect holiday decorations* for your home — or you can send one directly as a thoughtful gift to someone special. □

Every purchase supports our local female scout troop 118G, funding their activities, service projects, and adventures throughout the year. □

Let's help them grow, give back, and spread some holiday cheer! □



Weekly Adoration: Please join us in the Chapel Monday - Friday from 4:00 - 5 PM. Evening prayer begins at 5 PM. Rosary at 5:30 PM in the Church.

7TH & 8TH GRADE YOUTH MINISTRY

WHAT IS EDGE?

EDGE IS A WEEKLY MINISTRY FOR 7TH AND 8TH GRADERS THAT HELPS FORM THEM IN THEIR CATHOLIC FAITH.

EACH WEEK, WE COME TOGETHER, SHARE IN FELLOWSHIP AND PRAYER, PLAY SOME FUN GAMES, HEAR AN INSPIRING TALK, AND GIVE THE STUDENTS TIME TO DISCUSS WHAT THEY'VE HEARD IN SMALL GROUPS.

QUESTIONS? EMAIL ANALISA, CARDINA@GSPARISHTLH.ORG

OPEN TO ALL 7TH AND 8TH GRADERS!

EDGE

← Begins 9/23

TUESDAYS 4:30-5:30PM (SMALLER GROUP)
SUNDAYS 4:30-5:45PM (LARGER GROUP)
ALL IN THE COMMUNITY CENTER.

HIGH SCHOOL YOUTH MINISTRY

**Welcome to
Life Teen!**

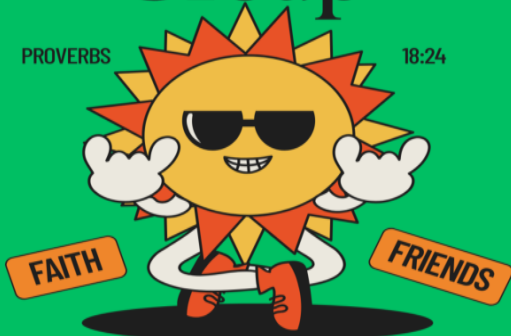
**ALL HIGH SCHOOLERS
ARE WELCOME!**

**JOIN US EVERY
SUNDAY FROM 7-9 PM!**

**Guy's
Group**

PROVERBS

18:24



Tuesday Nights

LIFEHOUSE @ 7 PM

BIBLE STUDY



WEDNESDAYS.

7-8:15PM.

LIFEHOUSE.

LIFE TEEN FAMILIES

*Join Our
Parent Emails!*

Weekly updates on fun Life
Teen activities, volunteer
opportunities, & sign-ups for
retreats/camp.

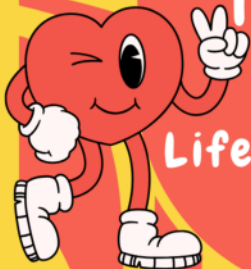
SCAN BELOW:



BAEZA@GSPARISHTLH.ORG

**Girl's Group
Thursday
Nights**

Life House @7-8



If you're a parent of a high school student in our Life Teen community, we'd love to invite your teen to be part of the **Life Teen Music Ministry**. This is a wonderful way to grow in faith, build community, and help lead our parish in worship at Life Teen Mass, which occurs at 6pm on the first two Sundays of every month.

If you're interested or even just curious, please reach out to us at LifeTeenYWC@gsparishtlh.org with "Life Teen" in the subject line, and we will get your teen signed up to attend a rehearsal.

We welcome all vocalists and instrumentalists, but no musical experience is needed- just an open heart and a love for God.

We would be truly blessed to have you join us. Come as you are, and let's make a joyful noise to the Lord together.



MINISTERIO HISPANO

Ministerio Hispano

Santa Misa en Español - Sabados 7:00 p.m.

ACTIVIDADES SEMANALES:

Grupo de Crecimiento Espiritual - Lunes 7 p.m.

Coronilla Divina Misericordia - Martes 6:30 p.m.

Comunidad de Fe - Jueves 7:30 p.m. (Virtual)

Para estar al tanto de las actividades, puedes unirte al grupo "Feligreses Good Shepherd" en WhatsApp



Hora Santa

Primer sábado del mes
a las 5:30 p.m. en la capilla

Jesús te espera

<https://goodshepherdparish.org/ministerio-hispano>



FAITH FORMATION
CAN CONTINUE
AT HOME FOR
ALL AGES!!

Formed.org

Formed is FREE for
Good Shepherd
parishioners. Please see
sign up instructions below.

1. Go to formed.org/signup
2. Select your parish (if you type in "Good Shepherd" you will see our name/address in drop down menu)
3. Register with your name and email address
4. Check your email account for a link to begin using



Stay Connected with
Fr. Raja on any device
with Substack!

*This free platform delivers Father's
reflections, messages, and homilies
directly to your inbox.*

Visit here to check it out and subscribe:

RajaseKarkarumelnathan.substack.com

You can visit the
Substack website or
download the app!



AROUND THE DIOCESE

JOIN US FOR OUR OPEN HOUSE

Tour our beautiful campus and learn more about our mission in providing an affordable college preparatory curriculum within a Christ-centered environment. Families and students are all invited.

Saturday, November 15, 2025 - 10:00 a.m. - 12:00 p.m.

RSVP: <https://www.sjpiichs.org/sjpii-open-house/>



RSVP HERE

5100 TERREBONE DR. TALLAHASSEE, FL 32311 • (850)201-5744 • WWW.SJPIICHS.ORG

TRINITY CATHOLIC SCHOOL

NOW ACCEPTING APPLICATIONS FOR 2026-2027

Trinity Catholic School is now enrolling for PreK-8th Grade for the 2026-2027 school year. We invite families interested in providing their child with a faith-filled and supportive education to learn more about the Trinity difference.

Visit our website to begin the application process and explore our admissions requirements and financial aid opportunities.

Don't wait - secure your child's spot for the next academic year!

TRINITY'S ANNUAL FALL FESTIVAL

Friday, November 7th
5:00pm - 8:00pm

FOOD | LIVE MUSIC | INFLATABLES
PETTING ZOO | FIRETRUCK | CRAFTS
GAMES | BEER AND WINE GARDEN

Visit us online to learn more
<https://www.trinityknights.org/parents/fall-festival>



Worldwide Marriage Encounter is a weekend for married couples who value their relationship and desire a richer, fuller life together. Attend a Marriage Encounter Weekend and learn the tools needed to keep your marriage strong. Sign up today to attend an upcoming Worldwide Marriage Encounter Weekend on Feb 13-15 in Tallahassee, or April 17-19 in Titusville, or July 31-Aug 2 in St Johns. For more info visit our website at wwme.org or e-mail:

Applications@FLCN-wwme.org or contact Walt & Viv Paskowski at waltviv.wwme@gmail.com if you have any questions.



Come & See Seminary Trip

NOVEMBER 7-9, 2025 •
St. Joseph Seminary College
located in St. Benedict, Louisiana

ROAD TRIP TO THE SEMINARY

Curious about what seminary is like? Want to explore the priesthood? Need time to pray about your life?

Visiting a seminary is one of the best ways to discern your vocation.

Join Fr. Tim Holeda and other men from our diocese on a three-day trip to St. Joseph Seminary College located in St. Benedict, Louisiana.

Experience Christian camaraderie, prayer, Mass, meals and discussion with seminarians, plus some sports and outdoor activities. For men 18 and older.

Register: ptvocations.org



MASS INTENTIONS

Friday, Oct 31	7:00	Terry Case Perry Nelson Tom Hart
Sat Nov 1	5:30	Regina Moseman Margaret Keenan Ginny Hassler
Sun Nov 2	8:00 10:15 12:00 6:00	All Souls All Souls All Souls All Souls
Mon Nov 3	6:45 9:00	We pray for Katherine Chudy We pray for Joel Peterson Hubert Kempe Pamela Poshefko Amelia Cardona
Tues Nov 4	7:00 6:45 9:00	Mass of Remembrance Michael, Clara Mae, and Donald Aymin We pray for Dolores Henderson We pray for Gerry Taylor
Wed Nov 5	6:45 9:00	Mike Womble David Laramée We pray for Ethan Benjamin We pray for the Behrens family
Thur Nov 6	6:45 9:00	We pray for the Hurley family Debbie Giudice Paulette Engleman Philip Shoemaker
Fri Nov 7	6:45 9:00	We pray for Dylan Thomas O'Neal We pray for Debbie Rivest Kiera Sheedy Camron Harold Ricker Ken Echternacht
Sat Nov 8	9:00 5:30	Louise Hanson Lou Trad Robert Boykins Miles Edward Anderson Margaret Halpern Vic Mauer, Jr.
Sun Nov 9	8:00 10:15 12:00 6:00	Mary Ranjitham and Arokia Swamy Charlie Kirk Don Sullivan Eric Beauregard Delores Gaden We pray for the Good Shepherd Parish Cindy Markert Brian and Katie Fitzgerald Eileen Dunford O'Gorman

Highlighting the Stewardship of Time and Talent**Meals for the Sick**

Volunteers in this ministry provide meals to parishioners who experience short term illness or family difficulties.

Thanks to all who serve in this ministry!

Treasure: Thank You For Sharing!

Offertory for the weekend of 10/19/25 was \$23,523.14

Looking for ways to give at Good Shepherd?

Please visit us online at:

www.GoodShepherdParish.org/Giving

PARISH INFORMATION

PARISH VISION

**To invite everyone to a
life-changing encounter with Jesus,
the Way and the Truth and the Life, the
Road to the New Jerusalem.**

PARISH CLERGY

Fr. Michael Foley	Pastor
Fr. Jacob Jaks	Parochial Vicar
Fr. Rajasekar Karumelnathan	Parochial Vicar
Fr. Paschal Chester, SVD	Hispanic Ministry
Ed Melvin	Deacon
Jerry Haynes	Deacon
Tom McBrearty	Deacon
Mark Schneider	Deacon
Tom Gillis	Deacon

PARISH STAFF

Finance Manager	Karen Minno
Finance Assistant	Joanne Kraynak
Parish Secretary	Sharon Strohl
Pastoral Associate	Saree Taylor
Business Manager	Elena VanLandingham
Facilities Manager	Andrew Gilbert
Welcome Ambassador	Susan O'Neal
Welcome Ambassador	Shirley Nicoll
Nursery Coordinator	Christina Eppes
Communications	Julie Fessler

FAITH FORMATION TEAM

Director of Children's Faith Formation	Diana Grosh
Pre School—6th grade	
CFF Administrative Assistant	Serena Bynum

YOUTH MINISTRY TEAM

Amanda Báez	Analisa Cardin	Kelly Colangelo
-------------	----------------	-----------------

**BELIEVE IN THE POSSIBILITY OF HELP
AND HEALING. THERE IS HOPE.**

Your local Victim Assistance Coordinator is available to help you or anyone who has been abused or victimized by someone representing the Catholic Church. We will listen to your needs and support you. We will help you make a formal complaint and arrange a personal meeting with the bishop, or his delegate, if desired.

We encourage you to come forward and speak out.

The Victim Assistance Coordinators in our diocese are:

Louis M. Makarowski, Ph.D., P.A. - Pensacola/Ft. Walton area ☎ 850-477-7181
Shannon D. Mullen, Ph.D. CSAT - ☎ 229-233-8009
Deacon Santiago Molina - En Español ☎ 850-627-2350

Parish Office Hours - Monday-Friday 8:30 AM - 4:30 PM & Sunday - 8:45 AM - 12:15 PM

Anointing of the Sick - Contact the Parish office 850-893-1837. After office hours and weekends, leave a message on the office voice mail and call 850-893-2381.

Nursery - Available for 10:15 AM and Noon Masses. Infant - 5 years. Visit: www.GoodShepherdParish.org/Nursery

Hearing-Impaired - Headsets available in the sound room at the back of Church.

Handicapped - Reserved seating in the two front and two back pews in the center section.

Communion for the Homebound - Please contact the Parish office at (850) 893-1837.

Celebrity **X** Cruises®

FOR THE LOVE OF TRAVEL

Kimberly Ledford • 850.378.7118

- www.VacationWishList.com
- www.facebook.com/VacationWishList
- www.facebook.com/kimberlyledford.travelprofessional



SUPPORT OUR PARISH

Local business ads sponsor the printing of our bulletin.
4lpi.com/adcreator

Interim HEALTHCARE

CINDY LAVOIE
VICE-PRESIDENT
Lic. #299991437

1962 B VILLAGE GREEN WAY, TALLAHASSEE, FL 32308
TEL: (850) 422-2044, FAX: (850) 386-6985
EMAIL: clavoie@interimhealthcare.com
TRUSTED HOME CARE SERVICES SINCE 1966

ABBEY FUNERAL HOME
Tallahassee Memory Gardens

CHRISTINA OHM, Funeral Director
4037 N. Monroe Street
Tallahassee, FL 32303

Phone: 850-562-1518
Fax: 850-536-5890



PERIODONTAL ASSOCIATES
OF NORTH FLORIDA

COLÓN • GUZMÁN • ZELLNER

Contact us today
Telephone: 850-562-6111
www.tallahasseeperio.com

LET'S GROW YOUR BUSINESS

Place Your Ad Here
and Support Our Parish!

CONTACT ME
Peter Stewart

pstewart@4LPi.com
(800) 477-4574 x6123

Place Your Ad Here and Support our Parish!

Instantly create and purchase an ad with

AD CREATOR STUDIO



4lpi.com/adcreator



IF YOU LIVE ALONE

MDMedAlert!™

STARTING AT
\$19⁹⁵
/mo.

- ✓ Ambulance/Police
- ✓ Family/Friends
- ✓ GPS & Fall Alert



CALL NOW! 800.809.3570

md-medalert.com

Tallahassee Catholic Radio
1330 AM / 96.9 FM
GRNonline.com

SUPPORT OUR ADVERTISERS!

DOES YOUR NONPROFIT ORGANIZATION NEED A NEWSLETTER?

Engaging,
ad-supported
print and digital
newsletters to reach
your community.

Visit Ipicommunities.com

OUR COMMUNITY NEWSLETTER
OCTOBER EDITION



Scan to
contact us!



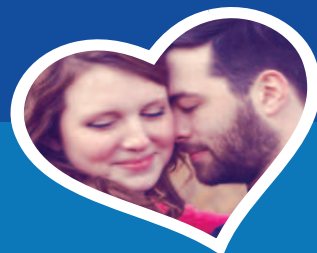
SUPPORT OUR PARISH

ALL TYPES OF REMODELING SERVICES

Painting • Flooring
Fencing • Decks • Sidings
Referrals available
Call 850-792-0482



catholicmatch®
Florida



CatholicMatch.com/FL



For ad info. call 1-800-477-4574 • www.4lpi.com

16-0128

**SUPPORT
OUR PARISH**

Local business ads sponsor
the printing of our bulletin.
4lpi.com/adcreator

**Individual / Child / Family / Marital
Adolescent Counseling**

Jane A. Marks, MA LMFT, LMHC
3325-C Thomasville Road, Tallahassee, FL 32308
(850) 385-8222

Shawn Yoakam
Setting the Standard with Style

Southern FLOORING
850-224-9850 SoFloor@aol.com
1940 Thomasville Road • Tallahassee, FL 32303

**TALLAHASSEE ALLERGY,
ASTHMA & IMMUNOLOGY**
Specializing in Adult & Pediatric Allergic Reactions

BRIAN G. WILSON, MD
NARLITO V. CRUZ, MD
850-656-7720
www.tallahasseeallergy.com

BEST SUPERIOR PAINTING
"Expect the Best"
Tattoo: Call Son
Owned
850-297-1882

• Interior/Exterior • Pressure Washing • Free Estimates • Wood Rot Repair
Licensed and Insured **850-297-1882** • www.superiorpainting.net

**CERTIFIED PUBLIC ACCOUNTANTS
Leonard & Withers, CPAs, PL**

Coman C Leonard III **Barbara S. Withers**
Telephone: 850-893-4080 Fax: 850-893-6375
Tax, Accounting & Consulting Services
Members: FICPA & AICPA

Rock Solid
Termite & Pest Control

*Parishioner Owned & Operated
Serving Tallahassee and Leon
County for over 30 years*

Roger Whitt, Owner
850-386-7872
1535 Killbuck Center Blvd • Ste. B-3
Tallahassee, FL 32309

**A Regional Behavioral Healthcare Network Serving the Big Bend
Career**

**Opportunities Available
Excellent benefits!**

Please visit our website:
www.apalacheecenter.org
Or call Stephanie Luckie at **850-523-3212**

Apalachee Center, Inc. participates in E-Verify. Federal law requires Apalachee Center, Inc. to verify the identity and employment eligibility of all persons hired to work in the United States. Apalachee Center, Inc. does not tolerate violence or harassment in the workplace. Apalachee Center, Inc. is an at-will employer. An equal opportunity/affirmative action employer. Drug-free workplace. Apalachee serves Franklin, Gadsden, Jefferson, Leon, Liberty, Madison, Taylor and Wakulla counties.

**2026
Catholic
Calendar**

Fill every month
with faith!

Order Yours Today! >



LUKE NEWMAN
CRIMINAL DEFENSE LAWYER
308 MCDANIEL STREET, TALLAHASSEE, FL 32303
WWW.LUKENEWMANLAW.COM
850.224.4444

WE APPRECIATE OUR ADVERTISERS!

They allow us to print
this bulletin. Thank you!

**TRUSTED
FORENSIC
EXPERTS**

Vehicle & Transportation Accident Analysis | Premises Liability | Biomechanical & Biomedical Analysis | Specialized Incident Investigations

Qforensics **850-583-5540 • Qforensics.com**
Quality Forensic Engineering **2341 Hansen Ct, Tallahassee, FL 32301**

★ FIRST PARTY ★
INSURANCE CLAIMS

WIND ★ FLOOD
FIRE ★ HURRICANE

**LAW OFFICE OF
DENNIS D. GREEN, JR., P.C.**

★★★★★

PH: (850) 436-3559

TP & WL
**FUNCTIONAL
WELLNESS**

Services: IV Therapy
PRP Therapy (For pain, hair loss, facials, injury)
Weight Loss

talpmplus@gmail.com
850-321-8756 | www.talpmplus.com

**STRATEGIC HEALTH INSURANCE
CONSULTANTS**

Scott Fenstermaker
Managing - Owner
850.556.4500
scott@strategic-healthinsurance.com
strategic-healthinsurance.com
• Medicare Certified •

IT SERVICES & SUPPORT

Parishioner Discounted Rate \$25/Hr
Custom Business Applications (NET, C#, java, Oracle, SQL)
Android Mobile Apps iOS Mobile Apps Custom Websites
Video Editing / Marketing needs for your Business
Computer Hardware/Network/Server Support
www.osfinfotech.com Email: osdan@osfinfotech.com

Call / Text 850 588 9002

**SUPPORT OUR
ADVERTISERS!**

Tally EYEGLASSERY

Family owned eyecare clinic and optical.
Local parishioner

2176 Capital Cir SE • Tallahassee, FL 32301
850-391-8900 | www.tallyeye.com
Call or go online to schedule an appointment!

MICHAEL A. BELL, CFP®
Personal Financial Plans & Investments

PHONE: 850.562.PLAN 1331 E. LAFAYETTE ST., SUITE B
FAX: 850.681.3299 TALLAHASSEE, FL 32301

MEMBER FPA
Securities and Investment Advisory Services
Offered through NEXT Financial Group
member FINRA/SIPC

**DR. FRANK
DENTAL CARE**
www.frankdentalcare.com

Frank Swerdzewski, DDS
Jimmy Maxwell, DMD

ROBERT S. MURRELL, D.M.D.
EVAN A. MURRELL, DMD
Family and Esthetic Dentistry

1286 Timberlane Road
Tallahassee, FL 32312
(850) 893-0711

info@murrelldental.com
www.murrelldental.com



KW
Broker Associate
REALTOR®, CRB



Cell: (850) 980-0517
kittyflynn@kw.com • www.KittyFlynn.com
KW KILLERWILLIAMS
1520 Killearn Center Blvd., Tallahassee, FL 32309
Each Keller Williams Office is independently Owned and Operated

Kitty Flynn
Professional
service
with a smile

Laura Fronczak Sackett
Commercial
Design Services



lsackett@cdstally.com • 850.509.2714
508-C Capital Circle SE, Tallahassee, FL 32301
www.commercialdesignservices.com



Math Matters
Math is easy when you know how!
Laura G. Morris
Academic Tutor
5103 Cold Harbor Drive • Apt. 341
Tallahassee, FL 32312
(850) 591-7776
Elementary, Middle & High School
Algebra I, Algebra II, Geometry
SAT, ACT, and GED Preparation
e-mail: startrek1330@gmail.com



CRUISE PLANNERS®

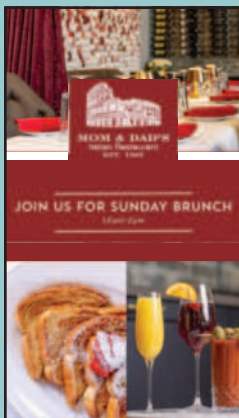
YOUR CRUISE & VACATION EXPERTS

Lisa Luciani
Individual and Group Travel

Locally Owned/
Parishioner Owned
YourJourneyMaker.com
850-854-2525

FL ST#39068

• Land Tours • River Cruises
• Ocean Cruises




Sharon Davis
School of Dance

**NOW ENROLLING
FOR THE 2025-2026
SCHOOL YEAR**
AGES 6 MONTHS-ADULT
1232 Timberlane Road
850.893.5900
SharonDavisDance.com



DOUG KELLY SEPTIC SERVICE

850.575.2172

dougkellyseptic.com

**INSTALLATIONS • REPAIRS • PUMP OUTS
INSPECTIONS • PERMITTING**

Tallahassee, Ear, Nose & Throat
Head & Neck Surgery, P.A.



MARIE O. BECKER, M.D., F.A.C.S.
Diplomate-Otolaryngology-Head and Neck Surgery
1405 Centerville Rd., Suite 5400 • Tallahassee, FL
Phone: (850) 877-0101 • Fax: (850) 877-2750
Email: tentadmin@tallyent.com • www.tallyent.com

Florida Bar Board Certified Master of Laws
Wills, Trusts and Estates Law (LL.M.) in Taxation

TERRENCE T. DARIOTIS
DARIOTIS LAW

1695 Metropolitan Circle, Suite 6 (850) 523-9300
Tallahassee, Florida 32308 terry@dariotislaw.com



**Seminole
Ventures
Painting**
Local Parishioner
904-637-9230
FREE ESTIMATES
email: admin@seminoleventures.com
• Interior/exterior residential painting
• Fence & deck staining

Pellegrino Enterprises, LLC

STUMP GRINDING, TREE & BRUSH REMOVAL,
HAUL AWAY SERVICES, PRESSURE/SOFT WASHING,
CONCRETE REMOVAL

Joseph Pellegrino | (850) 509-0860
josephpellegrino1@yahoo.com • Lic & Ins



**SUPPORT
OUR PARISH**
Local business ads sponsor
the printing of our bulletin.
4lpi.com/adcreator

Edward Jones® MAKING SENSE OF INVESTING



Steve McClelland, AAMS®
Financial Advisor
2030 Thomasville Road
Tallahassee, FL 32308
Bus. 850-224-1736
TF. 888-224-3352
Fax 888-276-8099
www.edwardjones.com



**Tutoring
Speech Language
Therapy
Mobile Services**
Eileen@MijaresSLP.com
www.MijaresSLP.com
Eileen Mijares, MS, CCC-SLP
Parishioner



5442 Thomasville Rd.
Tallahassee, FL
**Parishioner
Owned**
850-629-4299 **10% OFF** with ad

Debbie Gerber-Mahan
REALTOR®, CRS, SRES, GRI
850.545.8164
O: 850.329.7000 • F: 850.329.7252
2573 Barrington Circle, Tallahassee
Deb@DebGerber.com
www.DebGerber.com



**NEED AFFORDABLE
HEALTH INSURANCE?**
SCHEDULE A FREE APPOINTMENT
WITH A TRAINED NAVIGATOR.
(850) 224-1177

We work for you, not an
insurance company.
Call us today!






**Board Certified
Urologist**
AUI
ADVANCED UROLOGY
INSTITUTE
2000 Centre Pointe Blvd.
Tallahassee, FL 32308
For Appointments: (850) 309-0400
Toll Free: (800) 689-5578
www.advancedurologyinstitute.com



**DAILY
SPECIALS**
Sundays Kids
eat free with
purchase of
adult entree.

Uber Eats DOORDASH



850.320.6109 ♦ 2207-B Bannerman Rd



For ad info. call 1-800-477-4574 • www.4lpi.com

16-0128