

30TH SUNDAY IN ORDINARY TIME • OCTOBER 25TH, 2015

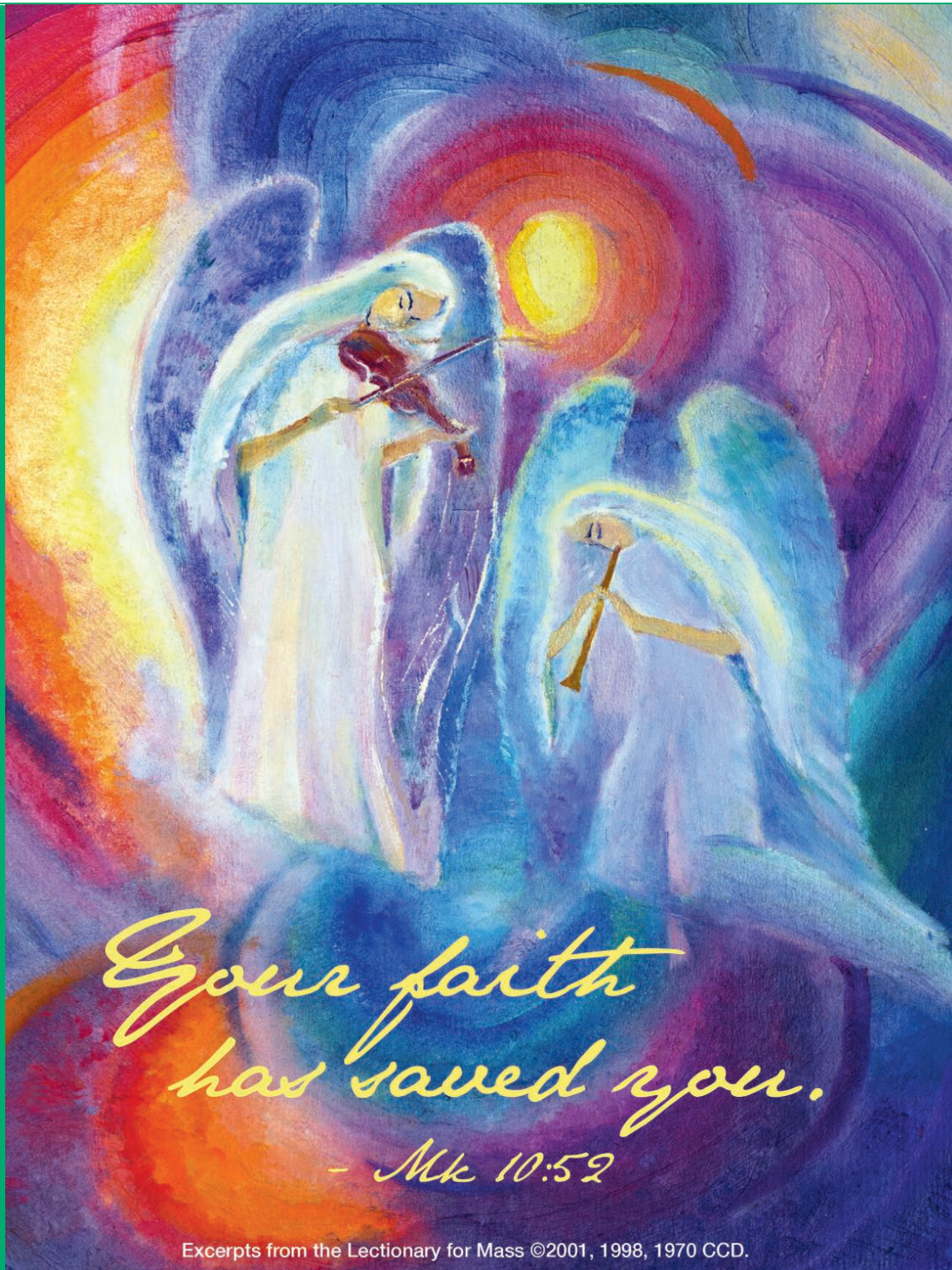
Saint Catherine of Siena

CATHOLIC CHURCH

3636 NORTH RIDGE ROAD • WICHITA, KANSAS 67205

s a i n t c a t h e r i n e w i c h i t a . c o m

Vol. 07 • No. 48



Welcome to Saint Catherine of Siena Parish

If you wish to join our Parish family, please stop by the parish office during the week to fill out a white registration card and stewardship volunteer form. If you have any questions, please call Clista in the office at 425-0595. Welcome!

The Prayer Before Mass

Come Holy Spirit, quiet my heart and my head, as I gather with my family, friends and neighbors to celebrate Mass. Quiet the thoughts and distractions that will keep me from worship. Open my mouth in prayer and song. Open my ears to hear God's Word. Open my eyes to the mystery of the Eucharist. Open my heart to receive Jesus with love. May I go forth strengthened to take the Mass into my life this week. Amen.

Parish Information

PARISH OFFICE

Hours Monday-Friday 9:00 a.m.-4:00 p.m.
Phone 316-425-0595
Fax 316-425-0685

PARISH STAFF

Pastor

Rev. Daniel J. Spexarth 316-425-0595
E-mail fatherdan@saintcatherinewichita.com
Medical Emergency Phone 316-617-9310

Parochial Vicar

Rev. P. J. Voegeli 316-425-0595
E-mail fatherpj@saintcatherinewichita.com

Secretary

Clista Pfannenstiel 316-425-0595
Email clista@saintcatherinewichita.com

Building and Technology

Tim Schmidt 316-425-0595
Email tschmidt@saintcatherinewichita.com

PSR Director

Jill Rump 316-249-2116
Email psr@saintcatherinewichita.com

Music Director

Sara High shigh@saintcatherinewichita.com
Bulletin (deadline to submit Monday @ noon)

Linda Wallace bulletin@saintcatherinewichita.com

SCHOOL OFFICE

Phone 316-719-2917
Fax 316-719-2930

SCHOOL STAFF

Principal

Betty Hunt bhunt@saintcatherinewichita.com

School Secretary

Emily Brown ebrown@saintcatherinewichita.com

PRAYER REQUESTS

Email prayerchain@saintcatherinewichita.com

REGULAR MASS TIMES

Weekends Saturday (vigil) 5:30 pm
Sunday 7:30, 9:00 & 11:00 am

Weekdays Monday & Friday 5:30 pm
Monday, Tuesday, Wednesday, Thursday, & Friday 7:30 am
School Masses (public welcome) Tuesday and Thursday at 9:00 am
(when school is in session)

CONFESSIONS

Weekends Saturday afternoons from 4-5pm.
Weekdays 30 minutes before each weekday Mass

ELECTRONIC GIVING!

We have an electronic option for making regular offerings. You can now set up your donations on our website or, stop by the church office for more info. Go to:
www.saintcatherinewichita.com to set up your electronic donation by following the onscreen instructions.



OUR NEXT STEP FORWARD APPEAL STATUS

TOTAL PLEDGED TO DATE:
\$8,881,672.69

TOTAL GIVEN TO DATE:
\$5,441,962.67

TOTAL GIVEN THIS MONTH:
\$67,444.68

STEWARDSHIP

Weekly Offering \$38,005.73

Disciples...Growing in Faith Together

Expecting a new baby?

You are invited to receive a special pre-natal blessing from Father Dan. A white rose dedicated to you will be placed by the statue of Mary as a symbol that the entire parish is praying for you and your baby. The blessings are given at 6:00 pm on the first Monday of every month. Following the blessing there is a Baptismal Preparation Class to help you prepare for the most important day in your child's life. Please call the Parish Office to register.

Parish School of Religion

PSR Contact: Jill Rump 316-249-2116
E-mail: psr@saintcatherinewichita.com
Class: Wednesday evenings 6:30-7:30pm

The Parish School of Religion is available to all children, kindergarten through eighth grade during the school year.

Rite of Christian Initiation

RCIA Contact: Shawn Gerleman 617-6579
RCIC Contact: Sally Graham 722-1172

If you or someone you know is interested in becoming Catholic, or is curious about the Church, please call Shawn at 617-6579.

"Once One Chooses to be a Disciple of Christ, Stewardship is not an Option"

What do you want me to do for you? As we go about the busyness of daily life we often ask God in our prayers to make our life easier by answering our requests. Today's Gospel is the story of Bartimaeus asking for sight. Last week it was James and John asking a special favor. Responding to the blind Bartimaeus, Jesus gives him his sight because of his faith. James and John were chosen to be among the Apostles and Jesus used their request to teach the group that to follow in his footsteps meant a life of service and sacrifice, not a life of power and glory. May we trust in God to provide for our needs and seek the wisdom to recognize his gifts that we may share them.

This Week in our Parish:

MEN'S CLUB MEETING

THIS Monday, Oct 26th at 7:30pm

All men of the parish are automatic members and we encourage you to join us for fun and fellowship with the St. Catherine of Siena Men's club. We meet in the large carpeted meeting room at the parish.

We look forward to seeing you there!

ROSARY SALE THIS WEEKEND!

After all Masses, rosaries are for sale!

These rosaries are made by the Parish Rosary Makers. All proceeds go towards the purchase of new supplies and for rosaries to be sent to the Missions.



DISCOVERING CHRIST — CONTINUES TONIGHT! From 5:30-8pm

Photographs from Last Sunday:



Week 2 of Discovering Christ!

WHY DOES JESUS MATTER?

Another great evening growing in faith and friendship.

SPORTS FEVER

Adult co-ed volleyball is on Tues. nights at 8pm. BYOB (bring your own ball) and join us in the gym!



Adult Men's basketball meets in the gym every Thurs. night at 8pm. This is a faster pace game for those with a competitive streak! Men looking for an easier style of pick up game are invited to play on Sunday evenings at 8pm. BYOB (bring your own ball) and join us either night! For more info, call the parish office or email Darren Pracht at darrenpracht@gmail.com.



November 1st is the end of Daylight Savings Time! Remember to **Fall Back!** Turn your clocks back 1 hour Saturday night!

EUCCHARISTIC ADORATION



Immediate need for Second Adorers:

11am-12noon Mondays

* or *

5am-6am Tuesdays

Can you spend one hour with Jesus in Adoration?



The wonderful thing about being a "second adorer" is that you have a co-adorer sharing your hour in case you need to travel or miss occasionally.

Leave a message for Mary Jane Wooten at 729-6777.



Football Frenzy Ticket Winners!!

Congrats to ticket winners from our Council's sales!

Week 6: Luke Ross, Frank Kotsch, Chase Smith, Steve Belden

sienaknights@saintcatherinewichita.com



BIEROCKS FOR SALE!

The Siena Knights are putting on the aprons and firing up the ovens to make Western Kansas Style fresh German Bierocks!! Taking orders now!! Available for pick up Nov. 21/22 weekend. \$15 half dozen and \$30 a full dozen.



Email your order today before they sell out!!

SienaKnights@SaintCatherineWichita.com.

Questions, contact John Ross at 655-4629.



BECOME A MEMBER OF THE KNIGHT OF COLUMBUS!



Thinking about becoming a member of the Knights? There will be 3 opportunities during the month of November to be initiated into the order.

Please contact Membership Director Kenneth McCoy to obtain further details. Call 641-1916 or email him at: advancestorage@sbcglobal.net.



Anyone interested in gym time during the winter season can email Darren Pracht at darrenpracht@gmail.com for more info and availability on times.

Practice times will begin on November 1st.

INTERCESSIONS FOR OCTOBER, RESPECT LIFE MONTH:

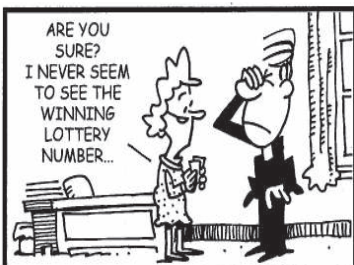
For people with disabilities: May those around them recognize that every person is a good and perfect gift and treat them accordingly; We pray to the Lord:

Liturgical Minister Week Day Schedule

Monday, October 26th, at 7:30 AM		
Lector	Stephanie Hug	
Altar Servers	Nicole Powell	Katrina Nguyen
Eucharistic Minister	Dale Wiggins	
Monday, October 26th, at 5:30 PM — New Time!		
Lector	Gary Sauber	
Altar Servers	Lexie Ridder	Sarah Wallace
Eucharistic Minister	Lisa Williams	
Tuesday, October 27th, at 7:30 AM		
Lector	Ves Temaat	
Altar Servers	Nicole Powell	Katrina Nguyen
Eucharistic Minister	Nancy Jenkins	
*9am Altar Servers:	Solana Tejada	Raymond Vasquez
Wednesday, October 28th, at 7:30 AM		
Lector	Ron Youngers	
Altar Servers	Nicole Powell	Katrina Nguyen
Eucharistic Minister	Ron Longer	
Thursday, October 29th, at 7:30 AM		
Lector	Nancy Jenkins	
Altar Servers	Nicole Powell	Katrina Nguyen
Eucharistic Minister	Mary Jane Wooten	
*9am Altar Servers:	NO SCHOOL - NO MASS	
Friday, October 30th, at 7:30 AM		
Lector	Diane Oberthaler	
Altar Servers	Nicole Powell	Katrina Nguyen
Eucharistic Minister	Ves Temaat	
Friday, October 30th, at 5:30 PM — New Mass Added!		
Lector	Jolene Lorg	
Altar Servers	Lexie Ridder	Caleb Clupny
Eucharistic Minister	Cheryl Robertson	

MASS INTENTIONS - WEEK OF OCT 26-NOV 1, 2015

Monday	7:30 am	† Karl Shook
	5:30 pm	† Betty Fahrback
Tuesday	7:30 am	† Jim Linnebur
	9:00 am	Intentions of Frank Rizza
Wednesday	7:30 am	† Captain Christopher Norgren
Thursday	7:30 am	† George Dietz
	9:00 am	NO SCHOOL – NO MASS
Friday	7:30 am	† Maury Brand
	5:30 pm	Intentions of Joe and Mary Moeller
Saturday	5:30 pm	† Walter Busch
Sunday	7:30 am	† Richard Silhan
	9:00 am	For the People
	11:00am	† Tuy Le Tran



Liturgical Minister Weekend Schedule

October 31-November 1, 2015

ATTENTION LITURGICAL WEEKEND MINISTERS!
Please sign in at the back of church **when you are assigned or substituting** for weekend Mass. Thank you.

Eucharistic Ministers		Altar Servers	
5:30p	MH Dale Wiggins	5:30p	Sarah Wallace
	MC Kathy Huschka	NEW	* Server needed *
NEW	CH Alice Wiggins	TIME	* Server needed *
TIME	JC Nancy Jenkins	7:30a	Janell Fuhrman
	JH Doug Jacobs		Grant Neville
7:30a	MH Janice Yaeger	9:00a	Grant Mellinger
	MC Matt Rohr		Michael Vo
	CH Marge Retzlaff		Caleb Clupny
	JC Bruce Meyer	11:00a	Julia Merseal
	JH Bill Boschert		Noah Holtzman
9:00a	MH Brandon Relph		Lexi Steven
	MC Jacob Wallace	Cantor / Musician	
	CH Adam Pfannenstiel	5:30p	Paige Towey
	JC Dana Fugate	TIME	Matt Ho
	JH Kelly Dandurand	9:00a	Rachel Lauer
11:00a	MH Lisa Williams		Dan Hubbell
	MC Jeanne Rosov	11:00a	Choir
	CH Mary Whiteside		Kim Stecklein
	JC Tony Hain	Ushers	
	JH Linda Hain	5:30p	Walt Shook
Lectors		NEW	Don Henderson
5:30p	David Albers	TIME	Brad Mallory
7:30a	Melissa Dick		Dale Seiwert
9:00a	Melissa Beasley	7:30a	Doren Rhoades
11:00a	Maribel Asencio		Brandon Hay
Offertory Gifts			Larry Carney
5:30p	Hank/Joye Haneberg		Jim Graves
9:00a	Chris/Katie Hecox family	9:00a	Kevin Christopherson
11:00a	Carlos/Molly Chavez family		Matt Daugherty
Hospitality			John Ross
7:30a	Jason Harris family		Greg Wesley
	Brian/Deanne Almond family	11:00a	
9:00a	Joey Zogleman family		As
	Sean/Ashley Wiltse family		Assigned
11:00a	Chris/Amy Merseal family	Preschool	
	Jacob/Vanessa Pierce family		
Nursery		9:00a	Elaine Klincik
9:00a	Tracy Oxler/Lachelle Peterson		Christine Giroux
	Vanessa McKinney		Kate Rohr

MASS READINGS - WEEK OF OCT 25-NOV 1, 2015

Sunday	Jeremiah 31:7-9/Hebrews 5:1-6/Mark 10:46-52
Monday	Romans 8:12-17/Luke 13:10-17
Tuesday	Romans 8:18-25/Luke 13:18-21
Wednesday	Ephesians 2:19-22/Luke 6:12-16
Thursday	Romans 8:31b-39/Luke 13:31-35
Friday	Romans 9:1-5/Luke 14:1-6
Saturday	Romans 11:1-2a, 11-12, 25-29/Luke 14:1, 7-11
Sunday	Revelation 7:2-4, 9-14/1 John 3:1-3/Matthew 5:1-12a

Mass Schedule Change This Week

There is **NO 9:00 am MASS** on Thursday, Oct. 29 since there is no school that day.

FREE HEARING SCREENING AT ST. CATHERINE'S

A WSU doctoral student needs subjects for her research on music and hearing. If you are 18–50 years of age, please consider participating in a fifty minute study to be performed this Oct/Nov at St. Catherine's. The process will test your hearing as well as your musical listening skills. To participate, please contact Felicia at 909.348.2576 or email: fxnepomuceno@wichita.edu



ST. CATHERINE'S BLOOD DRIVE

Sunday, Nov. 15th from 7:30am-12:30am

In our Church Gym. Your donation is **EXTREMELY IMPORTANT TO US** and appointments will be seen with priority. All those who come out to give blood this month will receive a coupon via email for a free haircut, courtesy of Sport Clips Haircuts. Call 1-800-RED CROSS or TEXT BLOODAPP to 90999 to schedule your donation appointment.



Give a meaningful gift this holiday season — Donate blood.



Reflection

"And many rebuked him, telling him to be silent. But he kept calling out all the more." The blind Bartimaeus was a courageous fellow. Not only was he bold enough to call out to Jesus who was passing by, but he also had the guts to keep on calling, even when people were telling him to be quiet. Clearly, this man knew that he needed Jesus --and he wasn't about to let popular opinion convince him otherwise.

What were those people thinking who tried to silence the poor beggar? Perhaps they thought that Jesus was too busy for a stop along the way. Maybe they bought into the prevalent idea that Bartimaeus' blindness was a punishment for sin and that he was therefore a lost



cause. Or it could be that they were just annoyed by his persistence. Whatever the case, these folks tried to pressure Bartimaeus into giving up. But he didn't. And the reward for his steadfastness was priceless: "Immediately he received his sight."

Immediately, that is, after he encountered Christ. But let's not forget that he had to invest all that time and energy earlier in order to arrive at that precious encounter. And we may have to do the same. Our persistence in prayer is often a necessary first step to the gift of God's intervention in our lives. We, like Bartimaeus, may have to call out time and time again, making our requests known to Jesus even when it may seem he isn't looking our way. We too may need to be faithful in the face of doubters and detractors who tell us that our prayers are pointless, that God doesn't really care, or that we deserve to be stuck in our own misery. Let us seek to be like this man who heard Jesus say, "Your faith has saved you."

Respect Life Month Continues

Photographs from our parish Praying the Rosary for America in our Prayer Garden on October 10th.



Dillons Reward Program - Please Sign Up!!

DILLONS COMMUNITY REWARDS PROGRAM

St. Catherine of Siena has access to the Dillons Community Rewards program through your existing Dillons Plus Cards.



Our supporters (260 households) who shopped at Dillons between 07/01/15 and 09/30/15 have contributed to our parish receiving \$3,237.94.
THANK YOU!

In order to Register at Dillons:

You will need: 1) a Dillons PLUS card, from any Dillons store, 2) a valid email, 3) an account at Dillons website.

To enroll in the program: 1) Members visit the website: www.dillons.com/communityrewards, 2) Sign in OR create an account (see below to create an account), 3) Click on "Enroll Now", 4) Enter our 5-digit NPO (10404) and search, 5) Select "St. Catherine of Siena Catholic Ch" and click on "Enroll". Questions? Call Clista in our Parish Office.

To create account: visit dillons.com/communityrewards
1) Click on "Register" at the top of the page, 2) Enter your email address, password, zip code, 3) Click on "Create Account" at the bottom of the page. You will receive an email confirmation, activate by clicking on the link in the text body, and entering your sign in info to confirm.

St. Catherine Youth News

PSR AND PARISH YOUTH STUDENTS! ———

We will have altar server training for 5th, 6th, 7th, and 8th grade PSR/Parish students on **THIS Wed., October 28, at 5:30 pm in the church.** Please have at least one parent come inside to fill out your contact information. Once youth have completed this training, they will be able to serve at weekday Masses. Because of sports and school activities, St. Catherine is in need of more altar servers. After they have served some weekday Masses, they can move on to the Saturday/Sunday Masses.

If your child has been through the training and isn't serving as often as they want, please call Clista at 425-0595 in the parish office for access to the sign up list.

MIDDLE SCHOOL YOUTH GROUP

Due to the Clergy Conference last week, the Middle School Youth Group will gather after PSR:

**THIS Wednesday, October 28th
from 7:30pm until 9pm.**



Fall Sport Season Results!

Our St. Catherine of Siena Catholic School 6th grade class can now participate in CSAL Sports.

Cross Country runners Sarah Wallace and Claire Jordan running on the West Side Eagles team placed first at League.



The Siena Saints girls volleyball team won first place in the Sacred Heart League tournament.



Regan Miller, Coach Tara Murphy, Maryanne Hartwell, Taylor Chrisman, Anna Wineland, Tori Marrs, Lexi Steven, Zoe Mast, Destiny Hoy, Avril Maughan, Quinn Marlow
(Not pictured: Sydney Olson)

Congratulations!!!

Around the Diocese

DIOCESAN OPPORTUNITIES FOR SHARING OF TALENTS:

The Catholic Care Center is in need of parish help two ways:

Organist at the Sunday and Daily Mass. Mass is every day at 9:30am. This is a great opportunity for an organist of various skill levels. Elderly love music!

Eucharistic Ministers to take Holy Communion to those residents who are unable to attend Mass. If you are already an Extra Ordinary Minister you would be eligible. Permission would be needed of your pastor. Interested, or know of someone who is, contact: Sister Agnes Weber, Catholic Care Center/6700 E. 45th St. N./Bel Aire

Heart to Harvest Catholic Shockers Benefit

The 5th Annual Heart to Harvest Dinner & Auction to benefit college campus ministry for St. Paul Catholic Student Center at WSU is **Friday, Oct. 30, 6pm** Drury Plaza Broadview. To purchase tickets, go to www.hearttoharvest.com or call 684-6896 for info.

YEAR OF FR. KAPAUN MISSION

St. Elizabeth Ann Seton Church will be hosting a free event during the Year of Fr. Kapaun Mission Tour on **Thurs, Nov. 6.** Rosary for Fr. Kapaun's Beatification Cause at 6:30 pm, and a talk on Fr. Kapaun at 7pm by national speaker, Joe Farris.

FINANCIAL FUTURE SEMINAR AT ST. FRANCIS OF ASSISI

Saturday, Nov. 7, 9:30am-12:00pm in Stewardship Hall

Take the first step in beginning your estate plan! Come to this FREE seminar to learn about estate planning, Social Security planning, and other related topics including a Q&A session, presented by local professionals. Come ask and learn.

Questions? Ryan Farley: rfarley@hinklaw.com

BINGO AT SACRED HEART, COLWICH

Sunday, Nov. 8th, doors open at 1pm

St. Anne's Altar Society cash bingo in Colwich will be held on Nov. 8. Doors open at 1pm, games start at 2pm. 21 games ending with a blackout that pays \$150. Nachos and desserts are served. Half of the proceeds go to the Priest Retirement & Education fund.

MILITARY CARE PACKAGES

K of C Council 10483 at St. Elizabeth Ann Seton puts together care packages for military members of our parish families (from some of the proceeds of the fireworks stand). They need not all be overseas. Please send names and addresses of the service men and women (with at least a hint of their location if it is not obvious--the package content can be varied somewhat based on locale/environment) so a list can be put together to base purchases on. Pertinent information is **needed by Nov. 12** and it can be sent to: pinstriper23@att.net or call/text Joe at 218-2252.

Join in a novena for the success of Fr. Kapaun's Beatification cause leading up to Veteran's Day, from Nov. 2nd-10th:

Lord Jesus, in the midst of the folly of war, your servant, Chaplain Emil Kapaun, spent himself in total service to you on the battlefields and in the prison camps of Korea, until his death at the hands of his captors. We now ask you, Lord Jesus, if it be your will, to make known to all the world the holiness of Chaplain Kapaun and the glory of his complete sacrifice for you by signs of miracles and peace. In your name, Lord, we ask, for you are the source of peace, the strength of our service to others, and our final hope. Amen.

ACTS 29

High School youth, come join us,
NEXT WEEK - Nov. 4th,
after PSR, from 7:30pm until 9pm

A Prize for the one who brings the most friends with them!

**ACTS
29**

 <p>Reuben G. Loyd, REALTOR® Experience the Excellence Cell: (316) 806-1241 www.reubenloyd.com royd3@cox.net</p>	 <p>St. Catherine of Siena Parishioner</p>	 <p>Minihan & Sons, Inc. General Contractors Commercial, Residential 316-755-1622 Member of St. Catherine's</p>	 <p>Cordell Wealth Management Chart your course... Pursue your dreams 316-943-6169 Rene Cordell, CFP® Parishioner</p>	 <p>Gary Wilbert Roofing Roofing-Windows-Siding A Reliable General Contractor Seniors Discount! (316)-361-2787 garywilbertroofing.com garywilbertroofing@cox.net</p>
 <p>Campco AUTO 7817 W. 37th No Wichita, KS 67205 Body, Frame & Paint Light Mechanical Cars for Sale 729-8963 camp_s@sbcglobal.net Deb & Steve Camp, Owners Members St. Catherine's</p>	 		 <p>HEIMERMAN PHOTOGRAPHY Celebrate. Capture. Cherish. HEIMERMANPHOTOGRAPHY.COM 620.255.2514</p>	<p>Norris Collision Center 316-794-1161 19918 W. KELLOGG DRIVE, GODDARD, KS 67052 A full service Autobody Collision Repair Facility "BIG CITY QUALITY SMALL TOWN SERVICE" Free Estimates Rental Car Service Paintless Dent Repair Free Pick up & Drop Off We Honor Insurance Estimates 19918 W. Kellogg Drive / Goddard, KS 67052 316-794-1161</p>
 <p>BRAND PLUMBING, INC. Residential Commercial Repair 316-942-2306 Lic # 1440 1894 2370 www.brandplumbinginc.com</p>	 <p>VISION CUSTOM HOMES 316.308-6670 visionhomes@pixius.net Tony Brand • Shawn Ketzner Ann Allaire Vision Custom Homes Member - WABA</p>	 <p>SIMPSON CONSTRUCTION SERVICES Building Spaces That Increase The Value of Life simpsonconst.com • 942.3206</p>	 <p>DAVIS-MOORE Jean-Marc Diaz-Rivera, New and Pre-Owned Sales c. 316-640-8872 w. 316-685-4848 jdiaz@davis-moore.com Hablo Español Mention this ad at purchase and Davis-Moore will make a donation to St. Catherine!</p>	<p>Armstrong Plumbing 7540 W. Northwind St #300 • 942-9535 Specializing in Hot Water Heaters starting at \$895 & Garbage Disposals starting at \$175 License # 1427</p>
 <p>Angie Tejada, MBA, RFC® Financial Planner Call Now For Your FREE Pre-Retirement Review 316.721-5191 www.angietejada.com Specializing in Women's Retirement Needs All securities through Money Concepts Corp. Member FINRA/SIPC.</p>	 <p>All Seasons CONSTRUCTION, INC. WINDOWS • SIDING ROOFING • REMODELING RODNEY LAGALY, Parishioner Call 316.685.1700</p>	<p>People are looking for your business. Help them find it by advertising here. Contact James Bradley to place an ad today! JBradley@4LPi.com or (800) 950-9952 x2655</p>	 <p>BELL Carpet & Floors, Inc. Abbey Flooring Center FINE FLOORS SINCE 1929 Commercial or Residential 801 WEST DOUGLAS WICHITA 316-265-9629 BellsAbbeyFlooring.com</p>	<p>PROFIT BUILDERS PAYROLL. ACCOUNTING. FINANCIAL REPORTING. Michelle Becker, President St. Catherine's Parishioner 316-729-7900 www.yourprofitbuilders.com</p>
 <p>Primary Care Associates A Friendly Neighborhood Environment for Your Medical Needs 316-684-2851 • www.cpa-wichita.com 7111 East 21st Street, Wichita, KS 67206</p>	 <p>All Seasons Sportswear LETTERJACKETS AND MUCH MORE engraving • embroidery • uniforms • screenprinting 7420 Northwind (33rd & Ridge Road) Wichita, KS 67205 • 316-721-3835 www.allseasonssportswear.com</p>	 <p>RATZLAFF ORTHODONTICS embrace yourself CRAIG D. RATZLAFF, D.D.S., PA 722-7100 ratzlafforthodontics.com</p>	 <p>PREMIER PUMP & WELL SERVICE INC. Curtis Weninger Parish Member of St. Catherine of Siena 316-722-8380 PremierPumpKS.com</p>	 <p>BOYCE W. SOWARD Certified Public Accountant White, Soward & Claassen, LLC 201 N. Main Wichita, Kansas BSoward@wsc-cpa.com 316-265-4877 MEMBER St. Catherine of Siena</p>
 <p>DOVE ESTATES Senior Living Community Independent Assisted Living 316-550-6343 1400 S. 183d St. W. Goddard, KS 67052 www.DoveEstatesKansas.com</p>	 <p>redbudpediatrics east 1861 N. Rock Rd. west 7570 W. 21st St. 316.201.1202</p>	 <p>THE Garage L.L.C. "Complete Automotive Repair" 610 N. Maize Rd. • 440-9380 • thegaragellc.com</p>	 <p>Late Nite Catechism by Vicki Quade & Margaret Dooversen FRIDAY, NOVEMBER 20 On Stage at the Historic Orpheum Theatre TICKETS AT WICHITAORPHEUM.COM Special Pricing Available for Groups of 10+</p>	 <p>pie five PIZZA CO. miracle mondays Every Monday, Pie Five Pizza of Wichita will donate 5% of all sales to benefit Our Daily Bread Food Pantry. OUR DAILY BREAD FOOD PANTRY CATHOLIC CHARITIES</p>
 <p>WILDCAT AGRI SERVICES Pioneer Premium Seed & Treatments, Crop Insurance, Agronomy Services, Field Days, Seed Wheat, Seed Delivery, and Personal Service MIKE MCGINN 316-772-7171 TYE ENGEL 316-217-6253 Margaret Anne Detmer, D.D.S. 8404 W. 13TH ST. STE 200 N.W. CENTRE, WICHITA, KS 67212 TELEPHONE (316) 721-8100 FAX (316) 721-8707 FAMILY DENTISTRY</p>	 <p>anita COCHRAN BANISTER real estate 316-304-6575 a name you know & a reputation you can trust.</p>	 <p>Jim Morgan State Farm Agent 13303 W. Maple, Ste. 103 Wichita, KS 67235 (316) 721-5769 jim@insurewichita.net Build a bundle. Save a bundle.</p>	 <p>CPM Wichita (316) 945-4774 Commercial/Residential Janitorial Cleaning OWNERS: Greg & Tracy Valcoure/Bill & Clara Welch Reflection Ridge Retirement Resort Call Today for a Lunch and Tour. 316-749-2517 2300 N. Tyler Rd. Wichita, KS 67205 ReflectionRidgeRetirement.com</p>	 <p>Star Call us for a FREE estimate on your home project. 316.942.2221 starlumber.com/whatif Owners are members of CKS, SEAS, SFA, St. Mark's, Holy Spirit, Sacred Heart and St. Catherine's.</p>
 <p>Liturgical Publications Inc. Connecting Your Community</p>	<p>FOR AD INFO CALL JAMES BRADLEY AT 1-800-950-9952 • www.4LPi.com</p>	<p>ST. CATHERINE OF SIENA, WICHITA</p>	<p>B 4C 02-0838</p>	

Cell (316) 706-6566
pclouse@weigand.com



"We truly enjoyed the buying & selling of our homes this time and it is due to Paula and her hard work."

Tara & John Murphy
St. Catherine of Siena Parishioners



mary kate
AND COMPANY
721-4101
HAIR SALON

MAXIMUM
OUTDOOR EQUIPMENT
& SERVICE
943-0201 • 1002 So. West St.

RUSTY ECK FORD
Proud to support the
New Education Center.
Member of St. Catherine Siena
www.rustyeckford.com

Wichita Vision Care
Kevin Cline OD • Amy Goertz OD
316-832-0088
12111 W. Maple, Ste. 125
www.wichitavisioncare.com

Orange Leaf
SELF SERVE FROZEN YOGURT
8918 W. 21st • 351-5713
12111 W. Maple • 440-2838
Same Owner as Holy Trinity

SCOTT & JULIE STREMEL
SEAS PARISHIONERS
www.stremelassociates.com
2872 N. Ridge Rd. • Wichita
Bus: 722-6182
Cell: 518-9083

Orth Roofing
Wichita ReRoofing Specialists
In Business Since 1987
Brett Orth • 316-721-9961
Parishioner

MIDLAND
INSURANCE GROUP INC.
GARY L. SOMMERHAUSER
PAUL ISEMAN • RYAN BINA
Business • Home • Auto • Life
2969 W. 13th • Wichita, KS
(316) 943-1166

GRAF ELECTRIC
316-665-7120
For All Your Electrical Needs!
Serving Wichita Since 1968

Cheri's Bakery
21st & Tyler ~ 722.1190
www.cheris-bakery.com

LEGACY Bank
HOME LOANS

ULTRA MODERN POOL & PATIO
722-4308
8100 W. Kellogg
5620 E. Kellogg
1420 Nelson, Derby
ultramodern.com
POOLS, SPAS, PATIO
Linda Wallace, Lance and Rita Rowlen
Owners. Members St. Catherine's

Mattoast Painting and Studio
Matthew J Habiger
Owner
316-285-0760
mattoast101@hotmail.com

Ann Klein
Realtor®
Cell: 316.990.5566 Office: 316.722.6182
Fax: 316.722.3457
2872 N. Ridge Road, Suite 112
Wichita, KS 67205
aklein@weigand.com

AMERICAN FAMILY
CHRIS A POST
CHRIS A POST AGENCY
2121 N TYLER RD, STE 111
WICHITA, KS 67212-4916
Office: 316-729-9890
Email: cpost@amfam.com

Fund your future
316.260.3755
Mention this ad and
receive \$100 credit
towards your closing costs.

Holy Trinity
Holy Spirit Catholic Books & Gifts, Inc.
8651 W. Central, Wichita, KS 67212
(316) 722-9493 • Fax (316) 722-8055
Hours: M-F 10-6, Sat. 10-5

GRENE VISION GROUP
TOTAL EYE CARE FOR THE ENTIRE FAMILY
Misha A. Anderson, OD
Family Practice Optometry
Surgical Comanagement
Contact Lenses
3607 North Ridge Road
Wichita, KS 67205
tel 316 721 2701
fax 316 721 8612
www.grenevisiongroup.com

BRANDON HAY/Parish Member
640-8533
Bhay@haylawncare.com
www.haylawncare.com
LAWN FERTILIZATION & WEED CONTROL
LAWN & LANDSCAPE MAINTENANCE
SPRINKLER SYSTEM START UPS,
WINTERIZATIONS AND SERVICE, SNOW REMOVAL

www.Legacy-Bank.com

HELLAND ROOFING & EXTERIORS
WICHITA'S REROOF SPECIALIST
316-686-8200

Linda Seiwert, REALTOR®
Current Member of St. Catherine of Siena
PenFed Realty • 3531 N. Ridge Road, Wichita, KS 67205
linda seiwert@penfedrealty.com • www.LindaSeiwert.com
Cell 316 648-9306 • 316 721-9271
A member of the franchise system of BHH Affiliates, L.L.C.

BERKSHIRE HATHAWAY
HomeServices
PenFed Realty

RODAN+FIELDS' DERMATOLOGISTS
CONTACT ME FOR A FREE SAMPLE
Anti-age • Sun Damage • Acne • Sensitivity
www.rpack.myrandf.com | Renee Pack | 316-518-8385

COCHRAN
MORTUARY & CREMATORY
1411 N. Broadway • Wichita, Kansas 67214
316-262-4422 • www.cochranmortuary.com
Wichita's Catholic Owned Funeral Home

NORDHUS DENTISTRY
119th & Central
Wichita, KS
Byron J. Nordhus, D.D.S.
www.nordhusdentistry.com
721-6730

OPEN SUNDAYS
MARCH-JUNE & SEPTEMBER-DECEMBER
Brady Nursery
"Landscaping with a Plan"
11200 W. Kellogg • 722-7516
www.bradynursery.com

Buying or Selling a Home?
Get the help of a true professional.
Fernando Martinez
The Fastest Realtor in town
316-880-5409
www.fernandomartinez.biz

KNIGHTS OF COLUMBUS
IN SERVICE TO ONE. IN SERVICE TO ALL.
www.kofc.org

UNDERHILL & REYNOLDS
The Real Estate Professionals
ST. CATHERINE OF SIENA PARISHIONER
10300 W. Central
Wichita, KS 67212

DeGraffenreid
Chiropractic, PA
Dr. Aaron DeGraffenreid
SEAS Parishioner
www.degraffchiro.com
9095 W. Central
Just west of Tyler on Central 721-4546

JOY'S SERVICE CENTER
Complete Auto Repair Since 1962
Mark and Annette Joy
549 N. Tyler
Wichita, KS 67212
316-722-4631
www.joyservicecenter.com

Freddy's
SEAMLESS ALUMINUM GUTTERING
CHOICE OF COLORS
GREG ANDERSON
264-1524
CELL 393-6390
2330 S. MEAD
P.O. BOX 17361 WICHITA, KANSAS 67213

Freddy is proud to have been a part of the Diocese of Wichita all his life!

Allstate
You're in good hands.
Bill Mull
Agencies
Allstate Insurance Company
10011 W 21st St No #107
Wichita, KS 67205
Phone 316.773.9864
Cell 316.259.3550
Email billmull@allstate.com
24-Hour Customer Service

COLBY REYNOLDS
REALTOR®
OFFICE: 316-722-1400
CELL: 316-558-2292
KANSASHOMEBUYER@GMAIL.COM
WWW.UNDERHILLREYNOLDS.COM

Avery
Automotive Repair & Towing
412 W. Main St.
Valley Center, KS 67147
Ph: (316) 755-0309
M: (316) 765-4401
www.averyautomotiverepair.com
Hours: Mon-Fri 7am-6pm, Sat 7am-Noon
Brendan McGottigan
President

ECK & ECK MACHINE CO., INC.
4606 West Harry
316-942-5924
Paul and Bettie Eck
St. Catherine of Siena Parishioners

ECC DATA RECOVERY LLC
Data Recovery,
Crashed Hard Drives,
Flash Drives and More...
We offer secure real time data
backup & restore!
call (316) 944-4448 for details
info@datback.com • www.datback.com • 2938 E Douglas Ave, Wichita, KS 67214

DeGraffenreid
Chiropractic, PA
Dr. Aaron DeGraffenreid
SEAS Parishioner
www.degraffchiro.com
9095 W. Central
Just west of Tyler on Central 721-4546

FOR ALL YOUR LEGAL NEEDS
MLG MAUGHAN
LAW GROUP LC
4425 West Zoo Blvd., Suite 5 • Wichita, KS 67212
Carl Maughan, Parishioner
(316) 264-2023

water life
SEAMLESS ALUMINUM GUTTERING
CHOICE OF COLORS
GREG ANDERSON
264-1524
CELL 393-6390
2330 S. MEAD
P.O. BOX 17361 WICHITA, KANSAS 67213

HELLEN VETERINARY CLINIC
RON HELTEN, DVM
New clients welcome
10% discount on 1st visit
6630 W. Central 942-1002
hellenveterinaryclinic.com

Investment in your retirement.
Leann E Smith, AAMS®
Financial Advisor
1104 E Douglas Ave.
Wichita, KS 67214
316-831-9818
www.edwardjones.com
Edward Jones
MAKING SENSE OF INVESTING Member SIPC

DeGraffenreid
Chiropractic, PA
Dr. Aaron DeGraffenreid
SEAS Parishioner
www.degraffchiro.com
9095 W. Central
Just west of Tyler on Central 721-4546

FOR ALL YOUR LEGAL NEEDS
MLG MAUGHAN
LAW GROUP LC
4425 West Zoo Blvd., Suite 5 • Wichita, KS 67212
Carl Maughan, Parishioner
(316) 264-2023

WILDCAT AGRI SERVICES
Pioneer Premium Seed & Treatments, Crop Insurance,
Agronomy Services, Field Days, Seed Wheat,
Seed Delivery, and Personal Service
MIKE MCGINN 316-772-7171
TYE ENGEL 316-217-6253

SPEXARTH PLUMBING INC
New Construction • Remodel • Repair
316-796-1175
Mark Spexarth • Colwich, KS
License #5064

Edward Jones
MAKING SENSE OF INVESTING Member SIPC

DeGraffenreid
Chiropractic, PA
Dr. Aaron DeGraffenreid
SEAS Parishioner
www.degraffchiro.com
9095 W. Central
Just west of Tyler on Central 721-4546

FOR ALL YOUR LEGAL NEEDS
MLG MAUGHAN
LAW GROUP LC
4425 West Zoo Blvd., Suite 5 • Wichita, KS 67212
Carl Maughan, Parishioner
(316) 264-2023

WILDCAT AGRI SERVICES
Pioneer Premium Seed & Treatments, Crop Insurance,
Agronomy Services, Field Days, Seed Wheat,
Seed Delivery, and Personal Service
MIKE MCGINN 316-772-7171
TYE ENGEL 316-217-6253

SPEXARTH PLUMBING INC
New Construction • Remodel • Repair
316-796-1175
Mark Spexarth • Colwich, KS
License #5064

Edward Jones
MAKING SENSE OF INVESTING Member SIPC

DeGraffenreid
Chiropractic, PA
Dr. Aaron DeGraffenreid
SEAS Parishioner
www.degraffchiro.com
9095 W. Central
Just west of Tyler on Central 721-4546

FOR ALL YOUR LEGAL NEEDS
MLG MAUGHAN
LAW GROUP LC
4425 West Zoo Blvd., Suite 5 • Wichita, KS 67212
Carl Maughan, Parishioner
(316) 264-2023

Oxler Family Dentistry
Jude A. Oxler, D.D.S. • George P. Oxler, D.D.S.
St. Catherine of Siena Parishioners
900 N. Tyler Road, Suite 2 • Wichita, KS 67212
722-2596

Edward Jones
MAKING SENSE OF INVESTING Member SIPC

DeGraffenreid
Chiropractic, PA
Dr. Aaron DeGraffenreid
SEAS Parishioner
www.degraffchiro.com
9095 W. Central
Just west of Tyler on Central 721-4546

FOR ALL YOUR LEGAL NEEDS
MLG MAUGHAN
LAW GROUP LC
4425 West Zoo Blvd., Suite 5 • Wichita, KS 67212
Carl Maughan, Parishioner
(316) 264-2023

APEX
Lawn Irrigation, Inc.

Sprinkler Installation & Service • Irrigation Design • Backflow Testing • Winterization • Startups, Sod & Seeding
Free Estimate • Residential & Commercial
Kirk Richards, Parish Member
kirkapex@yahoo.com • www.apexlawnirrigation.com
Office: 316.721.7844 • Fax: 316.721.7863