

EIGHTEENTH SUNDAY IN ORDINARY TIME • AUGUST 4TH, 2019

Saint Catherine of Siena

CATHOLIC CHURCH

3642 NORTH RIDGE ROAD • WICHITA, KANSAS 67205

www.saintcatherinewichita.com

Vol. 11 • No. 36

Parish Mission Statement:

We are a Catholic community of imperfect people growing in faith, caring for each other and reaching out to our neighbors in need.



18th Sunday

IN ORDINARY TIME

[Jesus] said to the crowd, "Take care to guard against all greed, for though one may be rich, one's life does not consist of possessions." - Lk 12:15

Welcome to Saint Catherine of Siena Parish

If you wish to join our Parish family, please stop by the parish office during the week to fill out a white registration card and stewardship volunteer form. If you have any questions, please call Clista in the office at 425-0595. Welcome!

Parish Information

PARISH OFFICE

HoursMonday-Friday 9:00 a.m.-4:00 p.m.
Phone316-425-0595 / 316-425-0685(fax)

PARISH STAFF

Pastor

Rev. Daniel J. Spexarth 316-425-0595
E-mail..... fatherdan@saintcatherinewichita.com
Medical Emergency Phone..... 316-617-9310

Parochial Vicar

Rev. Nicholas L. Jurgensmeyer 316-425-0595
E-mail..... fathernic@saintcatherinewichita.com
Deacon Trevor Buster 316-425-0595
E-mail..... deaontrevor@saintcatherinewichita.com

Secretary

Jill Rump 316-425-0595
Email..... jrump@saintcatherinewichita.com

Building and Technology

Tim Schmidt..... 316-425-0595
Email..... tschmidt@saintcatherinewichita.com

Stewardship Director

Clista Pfannenstiel 316-425-0595
Email..... clista@saintcatherinewichita.com

PSR Director

Heather Zogleman..... 316-719-2917
Email..... psr@saintcatherinewichita.com

Music Director

Sara High shigh@saintcatherinewichita.com

Bulletin (deadline to submit info is the Monday before @ noon)

Email..... bulletin@saintcatherinewichita.com

SCHOOL OFFICE

Phone316-719-2917 / 316-719-2930(fax)

SCHOOL STAFF

Principal

Jeremy Barr.....jbarr@saintcatherinewichita.com

Associate Principal

Elaine Klincik.....eklincik@saintcatherinewichita.com

School Secretary

Melanie Tidballmtidball@saintcatherinewichita.com

PRAYER REQUESTS

Email sienaprayerchain@gmail.com

REGULAR MASS TIMES

Weekends..... Saturday (vigil) 5:30 pm
Sunday 7:30, 9:00, 10:30 am & 12 Noon

Weekdays..... Monday & Friday 5:30 pm
Monday, Tuesday, Wednesday, Thursday, Friday & Saturday 7:30am

CONFESSIONS

Weekends.....Saturday afternoons from 4-5pm.

Weekdays..... 30 minutes before each weekday Mass

STEWARDSHIP OF TREASURE

June Weekly Tithes:

Envelopes/Online \$310,562.65

June Out of Love for God Appeal:

Envelopes/Online \$79,039.84

ELECTRONIC GIVING!

You can set up electronic account for making regular offerings, then notify the Parish office if you would like to stop receiving envelopes. Go to: www.saintcatherinewichita.com, follow directions.



The Prayer Before Mass

Come Holy Spirit, quiet my heart and my head, as I gather with my family, friends and neighbors to celebrate Mass.

Quiet the thoughts and distractions that will keep me from worship.

Open my mouth in prayer and song.

Open my ears to hear God's Word.

Open my eyes to the mystery of the Eucharist.

Open my heart to receive Jesus with love.

May I go forth strengthened to take the Mass into my life this week. Amen.



Disciples...Growing in Faith Together

Expecting a new baby?

You are invited to receive a special pre-natal blessing from Father Dan. A white rose dedicated to you will be placed by the statue of Mary as a symbol that the entire parish is praying for you and your baby. The blessings are normally given at 6pm on the first Monday of every month. Following the blessing there is a Baptismal Preparation Class to help you prepare for this important day in your child's life. Call the Parish Office to register.

Parish School of Religion

PSR Contact: Heather Zogleman 316-719-2917

E-mail: psr@saintcatherinewichita.com

Class: Wednesday evenings 6:30-7:30pm

The Parish School of Religion is available to all children, kindergarten through eighth grade during the school year.

Rite of Christian Initiation

RCIA Contact: Fr. Nic 316-425-0595

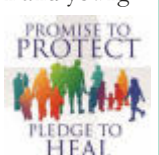
RCIC Contact: Sally Graham 316-833-3887 If you or someone you know is interested in becoming Catholic, or is curious about the Church, please call Fr. Nic at 425-0595.

"Fully Alive as Missionary Disciples"

When we look at today's readings, we see examples of the anti-stewardship mindset. In the first reading, we have Qoheleth, who basically minimizes the value of life to his wealth and possessions, of which he has none. His tone is somewhat resentful that for all his hard work, he has nothing to show for it at the end of his life. Then in the Gospel, Jesus has to point out possessions are not the indicator of a "rich" life, and that we should "take care to guard against all greed." Being a good steward means showing gratitude by sharing our blessings and using them to enrich the lives of one another. It does not mean building bigger barns to store the gifts we have been given. This applies not only to our wealth and possessions, but to every aspect of our lives as disciples. Let us open our minds and hearts to our call to stewardship!

Victim Assistance

The Diocese of Wichita is committed to protecting children and young people. For information about how the diocese is working to create a safe environment for children and young people, or to report sexual abuse of minors by a church employee, go to www.cdowk.org, pull down the Resources link and click on "Protection of Youth."





WELLNESS FAIR!
Booth Vendor Request
September 20, 2019



If you would like to host a booth, please email Mrs. Elson at celson@saintcatherinewichita.com

ADULT BIBLE STUDY

Come join us for an exciting new study,
Galatians: Set Free to Live
 Please join us for this beautiful eight week series:

Tuesday evenings, starting Sept 10th at 7:30 pm
Or

Thursday mornings, starting September 12th at 9:30 am
 The cost is \$30 for the workbook.

* Registration will be after all Masses Aug 24/25 and 31/Sept 1. If you have any questions, please contact Mary Jo Nigg at mjrdh@gmail.com or 316-722-7474



EUCCHARISTIC ADORATION

"The spiritual lives of our families are strengthened through our Holy Hour."
 -Pope St. John Paul II

We are in need of
Second Adorers:

Monday: 1-2AM

Wednesday: 4-5AM

Thursday: 4-5 AM, 6-7AM,
 10-11PM

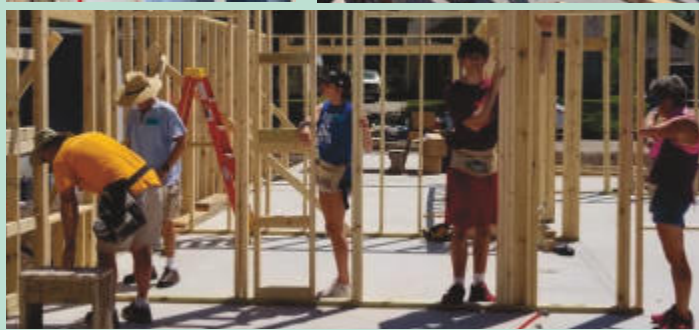
You can sign up by calling
 Mary Jane at 729-6777.



Apostles' Build
Habitat for Humanity 2019



St. Catherine parishioners have been volunteering their time and talent to help build a house for a family in need!



Did you know...

Walking with Purpose women's Bible study offers childcare during their morning sessions so the program can be more accessible to mothers at home with young children. This wonderful opportunity allows the mothers of our parish the time to receive the love and care they so very much need given to them through the written Word of Christ and the fellowship of other women in our parish.



In the Gospel, Jesus tells the parable about the rich man who selfishly stored all his grain and goods only to die and not enjoy his abundance anyway. What we struggle all our lives to learn is that life does not consist of possessions nor our perceived security, but of being possessed by God.

We pray that this week you realize that in giving, you indeed receive. Thank you for all that you have done to make our ministry a success thus far!

Through your gifts, we hope to be the face of Christ to all those we meet and offer them love and care with their most basic needs. We thank you in advance for your generosity!

For more information on how to become involved with the Society of Saint Vincent de Paul ministry at Saint Catherine, please visit www.saintcatherinewichita.com/svdp



Liturgical Ministry Week Day Schedule

Monday, August 5, at 7:30 AM

| | |
|----------------------|-----------------------------------|
| Lector | Tara Murphy |
| Altar Servers | E. Kissling/F. Rundle/P. Kissling |
| Eucharistic Minister | Mary Jo Nigg |

Monday, August 5, at 5:30 PM

| | |
|----------------------|-----------------------------------|
| Lector: | Theresa Timmermeyer |
| Altar Servers: | Landon Timmermeyer K. Timmermeyer |
| Eucharistic Minister | Sonya Tice |

Tuesday, August 6, at 7:30 AM

| | |
|----------------------|-------------------------------|
| Lector: | Joye Haneberg |
| Altar Servers | G. Chavez/F. Rundle/Q. Chavez |
| Eucharistic Minister | Gloria Schoenhals |

Wednesday, August 7th, at 7:30 AM

| | |
|----------------------|-----------------------------------|
| Lector | Mary Ann Youngers |
| Altar Servers | E. Kissling/F. Rundle/P. Kissling |
| Eucharistic Minister | Linda Aylward |

Thursday, August 8th, at 7:30 AM

| | |
|----------------------|----------------------------|
| Lector | Donald Reimer |
| Altar Servers | Finn Rundle Peter Kissling |
| Eucharistic Minister | Jill Rump |

Friday, August 9th at 7:30 AM

| | |
|----------------------|----------------------------|
| Lector | Diane Oberthaler |
| Altar Servers | Finn Rundle Peter Kissling |
| Eucharistic Minister | Joseph Schillaci |

Friday, August 9th, at 5:30 PM

| | |
|----------------------|--------------------------|
| Lector | Sue Christensen |
| Altar Servers | Ava Steven Olivia Steven |
| Eucharistic Minister | Joanie Koehler |

Saturday, August 10th, at 7:30 AM

| | |
|----------------------|------------------------------------|
| Lector | Randy Walker |
| Altar Servers | Kaitlyn Loper-Vogel Austin Donahue |
| Eucharistic Minister | Steve Gonzales |

MASS INTENTIONS - WEEK OF AUGUST 5 - 11, 2019

| | | |
|-----------|---------|-----------------------------------|
| Monday | 7:30 am | † William H. Arens |
| | 5:30 pm | † Rosemary Lewis |
| Tuesday | 7:30 am | † Leon & MaryAnn Gabel |
| | 9:00 am | NO MASS |
| Wednesday | 7:30 am | † LJ Pracht, Sr. |
| Thursday | 7:30 am | † Ellie Schartz |
| | 9:00 am | NO MASS |
| Friday | 7:30 am | † Jerry Patry |
| | 5:30 pm | Intention of All Fathers |
| Saturday | 7:30 am | † James Hixson |
| | 5:30 pm | Special Intention |
| Sunday | 7:30 am | For the People |
| | 9:00 am | † Ivan Lange |
| | 10:30am | Intention of Dave & Laura Calvery |
| | Noon | † Jennifer Norgren |

18TH SUNDAY IN ORDINARY TIME



Liturgical Minister Weekend Schedule

August 10-11, 2019

MINISTERS! PLEASE INITIAL THE SIGN IN SHEET AT THE BACK OF CHURCH BEFORE MASS. THANK YOU!

| Eucharistic Ministers | | Altar Servers | |
|-----------------------|--|-------------------|--|
| 5:30p | MH Joye Haneberg MC Thomas Monckton CH Connie Thomas JC Ronda Smith JH Chuck Smith | 5:30p | Kadee Martinez Karina Martinez Xander Fenoglio |
| 7:30a | MH Kristin Ewertz MC Julie Strathe CH Denise Walker JC Randy Walker JH Paulette Bulloch | 7:30a | Corey Hurst Dalton Hurst |
| 9:00a | MH Gloria Schoenhals MC Marcy Aycock CH Darren Pracht JC Melissa Williams JH Jill Rump | 9:00a | Tyler Rump Isaac Lager Neil Goebel |
| 10:30a | MH Joseph Schillaci MC Mary Le CH Sharon Thimmesch JC Cindy Chrisman JH Cheryl Robertson | 10:30a | Isaac Burroughs Ilese Burroughs Abbie Brown |
| 12:00 | MH Kathy Church CH Christy Hillard JH Jacob Thomas | 12:00 | Taylor Carson Parker Carson |
| Lectors | | Cantor / Musician | |
| 5:30p | Kristin Fimple | 5:30p | Young Adult Choir |
| 7:30a | Sean DiGiovanni | | Matt Ho |
| 9:00a | April Benoit | 9:00a | Karen Gomez |
| 10:30a | Carl Maughan | | Mary Valdez |
| 12:00 | Sue Christensen | 10:30a | John Vinroe |
| Offertory Gifts | | | Dan Hubbell |
| 5:30p | Mark Hilger Family | Ushers | |
| 9:00a | Matt Carney Family | 5:30p | Hank Haneberg |
| 10:30a | Jeanette Garcia Family | | Bradley Mallory |
| 12:00 | *No Offertory Family | | Mike Ronsick |
| Hospitality | | 7:30a | Gavin Thunberg |
| 7:30a | Stephanie Seiler Family | | Adam Becker |
| | Emily Bogner Family | | Kevin Larkey |
| 9:00a | Jane Blasi | | Ken Honas |
| | Danielle Webb Family | 10:30a | Michael Daylor |
| 10:30a | Adam Waterson Family | 9:00a | Roy Aycock |
| | Emily Brown Family | | Les Eck |
| Nursery | | | Ryan Bina |
| 9:00a | Heather Leuci | | Nathan Lager |
| | *Volunteer Needed | | Timothy Krier |
| Nursery | | | Brian Wilhite |
| | | | Andy Kolb |
| | | | Curtis Lubbers |
| | | 12:00 | *Volunteer Needed |
| | | | *Volunteer Needed |
| | | | *Volunteer Needed |
| | | | *Volunteer Needed |

MASS READINGS - WEEK OF AUGUST 4- 10, 2019

| | |
|-----------|--|
| Sunday | Ecc 1:2,21-23/Ps90:3-17/Col3:1-5,9-11/Luke12:13-21 |
| Monday | Nm 11:4-15/Ps 81:12-17/Matthew 14:13-21 |
| Tuesday | Dn 7:9-10, 13-14/Ps 97:1-9/2 Pt 1:16-19/Luke 9:28-36 |
| Wednesday | Nm 13:1-2,25-- 14:1-35/Ps 106:6-23/Matthew 15:21-28 |
| Thursday | Nm 20:1-13/Ps 95:1-9/Matthew 16:13-23 |
| Friday | Dt 4:32-40/Ps 77:12-21/Matthew 16:24-28 |
| Saturday | 2 Cor 9:6-10/Ps 112:1-9/John 12:24-26 |

CHURCH CLEANING AUGUST 10TH

NEXT Saturday, Aug 10th, is the scheduled day for regular cleaning our church. We meet at 8am (on the second Saturday of each month) to mop, dust and polish; and we are usually finished around 9am. Please plan to come and join us! Contact Jennie Gronniger at 250-7923 for any questions you have.



Fall Welcome Retreat

Fall Welcome Retreat-What is Welcome?

Welcome is an overnight weekend experience. Through fellowship, faith sharing, hospitality, music, individual and group activities, you have the opportunity to step back from everyday and reflect on your life and your spiritual journey while building meaningful relationships with other men or women in our parish.

Build community. Transform your parish. Transform you.

Men's Retreat: October 5th -6th

Women's Retreat: October 12th-13th

Sign up now! For more information, call or text Derek Voegeli @ 316-641-3495 or Katy Coy @ 620-727-5103, or register online @ www.saintcatherinewichita.com/welcome

Reflection

The cake is frosted, the guests have arrived, and the gifts are piled high. One by one, the packages are opened, and one by one, the child reaches for another. Who among us hasn't seen a child who appears crestfallen when the gifts run out? Even the abundance isn't quite enough. Today's Gospel tackles a key question in the spiritual life - grateful or greedy?

"There was a rich man whose land produced a bountiful harvest." We all recognize the need to be practical. Raising a family, there's need to save for all sorts of things beyond normal day-to-day costs - medical bills, family vacations, private school, rainy day funds, retirement. Jesus doesn't critique the rich man for simply having an abundant harvest. It's his mentality. Does the rich man sell off the extra to make the needed repairs to the back fence or to invest in some additional livestock to grow the business? Perhaps donate some of the excess to the poor? No. "You have so many good things stored up for many years, rest, eat, drink, be merry!" The man wants to hoard and indulge with no concern for others.

Jesus doesn't condemn prudent saving or owning necessary items. He calls us to purify our attitudes. "Guard against all greed... one's life does not consist of possessions." We are called to be good stewards. This means being practical. It also means remaining open to God's invitation with our resources. Are we tithing to our parish? Do we give alms to the poor? Does our weekly entertainment far outstrip what we offer to others? Life is not about "stor[ing] up treasure for [our] selves." The more we grow in gratitude and generosity, the more we become "rich in what matters to God."

St. Catherine Men's Club Golf Tournament

September 7th at 1:30pm
Rolling Hills Golf Course



For more information go to

www.bidpal.net/SienaGolf

\$100 donation per player includes Cart
-Golf-Drinks-Dinner-Prizes

Saint Catherine of Siena Duelling Piano's Event



Saturday, August 17th, 2019

For more information go to:
www.saintcatherinewichita.com/duellingpianos

Put This on Your Calendar

Sun 8/4 18th Sunday in Ordinary Time

Welcome, PEC - Multipurpose & Art Room, 7pm
HSYG, Adoration, 7:30 pm

Mon 8/5 Baptism Class & Blessing, Bride's Room, 6pm

Tues 8/6 Feast of the Transfiguration of the Lord

Wed 8/7 Vincent de Paul Meeting,
Bride's Room, 5:30pm

Thurs 8/8 Feast of St. Dominic

KofC Council, Multi-
Purpose Room 7:30pm

Sat 8/10 Feast of St. Lawrence
Church Cleaning, 8am

Sun 8/11 19th Sunday in Ordinary Time

Virtus training, Carpet Room, 3pm
Welcome, PEC - Multipurpose & Art Room, 7pm
HSYG, Gym, 7:30 pm



PSR News



Volunteer teachers and aides are needed for the 2019-20 PSR year. Please contact Heather Zogleman if interested at psr@saintcatherinewichita.com

Online enrollment is now open at
www.saintcatherinewichita.com/psr

Classes begin Wednesday, September 4th at 6:30 pm

Paid Child Care Help Needed

Walking With Purpose is a women's Catholic Bible Study offered on Wednesday's 9:15 am-11:30 am. We are seeking to build our Child Care Coordinator Ministry to make our program more accessible to mothers at home with young children. We are praying for a few women to serve once a week in our nursery. **For more information call Katie Reichenberger at 816-522-0318 or email KatFHSU@hotmail.com**



Middle School Youth Group

Do you have an incoming 6th – 8th grade student? We would love your assistance supervising and facilitating our monthly middle school youth group meetings! MSYG will begin in September and run through May of 2020 on Wednesday evenings once a month .. help just for one month or through the entire year! For more info please contact Clista in the parish office!



ACTS 29
go and make disciples

High School
Youth Group



Confirmation classes will begin Sunday, Sept 8th at 6:00pm for Students in 8th, 9th, and 10th Grades. Confirmation Mass with Bishop Kemme will be November

20th. For more information, go to:
www.saintcatherinewichita.com/Confirmation

August 8th-12:00 to 1:30 @
St. Joseph Pastoral Center
437 N Topeka, Wichita



August's Topic

**End of Life-Planning for and
Navigating Decisions**

Medical advances bring new and complex questions for family caregivers and their loved one. Our Catholic faith offers a long tradition of teaching to help guide us through these multifaceted issues to respond in light of our faith and the hope of our eternal reward in Christ.

Be Nourished

Help Wanted

St. Catherine of Siena Catholic School is accepting applications positions for the 2019-20 school year.

**School Extended Day Program (EDP)
Part-time Cook
Full-time Kindergarten Class Room Aide**

All Positions may be found at
<http://catholicdioceseofwichita.org/careers>

Around the Diocese

Sidewalk Advocates for Life:

Saturday, August 24 at 9:00am at the Chancery – 424 N. Broadway, 67202

Wednesday, August 28 at 9:00am at the Spiritual Life Center – 7100 E 45th St. N, Bel Aire, KS 67226

Holy Land Pilgrimage

Join Casting Nets Ministries (Tony Brandt & Chris Stewart, with Fr. Joseph Irwin) for a life-changing pilgrimage to the Holy Land from January 15-25, 2020! For more information call Chris Stewart at 316-619-0497 or email chris@castingnetsministries.com or visit www.CastingNetsMinistries.com

Respond to Immigration Crisis with Catholic Charities

Catholic Charities Wichita offers two ways to support immigrants, both locally and at the border. Donations to Catholic Charities' Immigration Services Hardship Fund helps local immigrants who cannot fully pay for assistance with services such as naturalization and citizenship, family immigration, adjustments of status, and DACA and green card renewals. To learn how to donate locally and at the border, visit

6 CatholicCharitiesWichita.org and select "Donate."



Reuben G. Loyd
Your Home Town Realtor®
Cell: (316) 806-1241
www.reubenloyd.com
rloyd3@cox.net



St. Catherine of Siena Parishioner

Minihan & Sons, Inc.
General Contractors
Commercial, Residential
 **316-393-6088**
Member of St. Catherine's



Residential Commercial Repair
BRAND PLUMBING, INC
316-942-2306
www.brandplumbinginc.com
Lic # 1440 1894 2370

Primary Care Associates

Paul H. Davis, M.D. Cole M. Gillemwater, M.D. Angela M. Leiker, M.D.
Mark A. Leiker, M.D. David M. Vetterton, M.D. Claudia X. Wendel, M.D.
Daria K. Rivera, D.O. Hal K. Truong, D.O. Thanh N. Truong, D.O.
Stephen J. Grindel, D.O. Yen Rodriguez, PA-C Emily C. VinZant, M.D.
316-684-2851 • www.pca-wichita.com
7111 East 21st Street, Wichita, KS 67206



 **Cordell Wealth Management**
Chart your course... Pursue your dreams
316-943-6169
Rene Cordell, CFP®
Parishioner



610 N. Maize Rd. • 440-9180 • thegaragellc.com

TEJEDA FINANCIAL

Private Wealth Management
Less Stress | More Enjoyment
Angie Tejeda, MBA, MRFC®
316.721-5191 • www.angietejeda.com
Call Now For Your FREE
Pre-Retirement Review
Specializing in Women's
Retirement Needs
All securities through Money
Concepts Corp. Member
FINRA/SIPC.
Tejeda Financial is not affiliated with
Money Concepts Capital Corp.



HEIMERMAN PHOTOGRAPHY
620.255.2514

ANDALE CONSTRUCTION INC.
3170 N Ohio • Wichita, KS 67219
(316) 832-0063
www.andalereadymix.com
www.andaleconstruction.com

 **CRANMER GRASS Farming Inc.**
316-722-7230
www.cranmer-grass.com
Kansas's Premier Turf
Supplier since 1953

**PROTECTING SENIORS
NATIONWIDE
MEDICAL ALERT SYSTEM**
\$29.95/MO
BILLED
QUARTERLY
CALL NOW!
1.877.801.7772
WWW.247MEGALARM.COM

 **All Seasons CONSTRUCTION, INC.**
Rodney Lagaly
PARISHIONER
FREE Consultations
316-685-1700
WINDOWS - SIDING
ROOFING - REMODELING
AllSeasonsConstruction.com

HELP PROTECT YOUR FAMILY
CALL NOW! 1-888-891-6806
 

 **CarStoreUSA.com**
9831 E HARRY ST, WICHITA, KS 67207
WICHITA: (316) 202-5000

NEVER MISS A BULLETIN!
Sign up to have our weekly parish bulletin
emailed to you at www.parishesonline.com

BELL Carpet & Floors, Inc. 801 WEST DOUGLAS
WICHITA
Abbey Flooring Center
FINE FLOORS SINCE 1929
316-265-9629
Commercial or Residential
BellsAbbeyFlooring.com

Armstrong Plumbing
7540 W. Northwind St #300 • 942-9535
Specializing in Hot Water Heaters starting at \$895
& Garbage Disposals starting at \$175
License # 1427

 **All Seasons Sportswear**
LETTERJACKETS AND MUCH MORE
engraving • embroidery • uniforms • screenprinting
7420 Northwind (33rd & Ridge Road)
Wichita, KS 67205 • 316.721.3835
www.allseasonssportswear.com

 **WE'RE HIRING
AD SALES EXECUTIVES**
• Full Time Position with Benefits
• Sales Experience Preferred
• Paid Training
• Overnight Travel Required
• Expense Reimbursement
CONTACT US AT: careers@4LPi.com
www.4LPi.com/careers


316-207-7466


SIMPSON CONSTRUCTION
942-3205
simpsonconst.com

 **Individual and Couples Counseling**
Kathleen Myers LCSW Psychology Consultants
316-773-9525 • 10222 W. Central Ave, Suite 202 • Wichita, KS 67212
wichitatherapist.com
Parishioner at St Peter the Apostle Catholic Church

JERRY R. FORSHEE PLUMBING
832-9373
BONDED - LICENSED - INSURED
INSTALLATION - SERVICE - REPAIR
KITCHEN & BATHROOM REMODELING

**FREE
AD DESIGN
WITH PURCHASE
OF THIS SPACE.**
— 800-950-9952 —

 **Garden Plain State Bank**
FDIC
10526 West Maple, Wichita, KS 67209
525 N. Main, Garden Plain, KS 67050
316-721-1500
gpsbank.com

Annie (Bachman) Pfeifer
St. Catherine Parishioner
316.975.0777 
Specializing in
Disney Destinations

Margaret Anne Detmer, D.D.S.
8404 W. 13TH ST. STE 200
N.W. CENTRE, WICHITA, KS 67212
TELEPHONE (316) 721-8100
FAX (316) 721-8707
FAMILY DENTISTRY

**AVAILABLE
FOR A LIMITED TIME**
**ADVERTISE
YOUR
BUSINESS HERE**
Contact **James Bradley** to place an ad today!
jbradley@4LPi.com or (800) 950-9952 x2655

SPREAD THE WORD
A Thriving, Vibrant Community Matters

SUPPORT OUR ADVERTISERS

 **Star Lumber & Supply**
Maple & West Street
316.942.2221
Greenwich & K96
316.636.2800
Members of:
Christ the King,
SEAS,
St. Francis &
St. Catherine

DAVID LIES PLUMBING INC.
945-0117

PROFIT BUILDERS
PAYROLL, ACCOUNTING, FINANCIAL REPORTING.
www.yourprofitbuilders.com
316-729-7900
Michelle Becker President
St. Catherine's Parishioner

Paula Hilger-Clouse
Cell (316) 706-6566
pclouse@weigand.com



What a fun time working with you...
and thank you."

RON & MARY ANN YOUNGERS
Parishioners



mary kate AND COMPANY
721-4101
HAIR SALON

Buying or Selling a Home?
Get the help of a true professional.
Fernando Martinez, Parishioner
The Fastest Realtor in Town

316-880-5409
www.fernandomartinez.biz



Lubbers
The Friendly Way to Buy!
LubbersCars.com 800.LUBBERS 540.0011 Cheney, KS



Erik Maybee
316-630-0003

AMERICAN FAMILY INSURANCE
CHRIS A POST
CHRIS A POST AGENCY
2121 N TYLER RD, STE 111
WICHITA, KS 67212-4916
Office: 316-729-9890
Email: cpost@amfam.com

COLDWELL BANKER
PLAZA REAL ESTATE

Mt. Hope Nursing Center & LARSEN INDEPENDENT LIVING APARTMENTS
Making "Living Longer" Better
Providing compassionate care to the elders we serve.
In-patient and out-patient therapy available
www.mounthopenursingcenter.com • (316) 667-2431

GRAF ELECTRIC
316-665-7120
For All Your Electrical Needs!
Serving Wichita Since 1968

LEGACY Bank
Your Neighborhood Community Bank
Employee Parishioners
Beth Masterson Lisa Piska
Kristen Wesolowsky Brad Yaeger

Paul Spexarth - Director
Gene Suellentrop - Director
Dennis Wetta - Director

Sunflower Real Estate
Your Local Experts

Colby Reynolds
Broker/Owner
St. Catherine of Siena Parishioner
8526 W. 13th St. N., Ste 150 • Wichita, KS 67212
Office: 316-722-1400 • Cell: 316-558-2292
sellwithsunflower@gmail.com
www.sellwithsunflower.com

Winter Roofing and Remodeling llc
ROOFING • REMODELING • STORM DAMAGE REPAIR
COMMERCIAL ROOFING • METAL WALL PANELS
413 W Chicago Ave. • Colwich, KS 67030 • parish members

WINTER IS HERE!



Call Today! **(316) 260-5883**

Cheri's Bakery
21st & Tyler ~ 722.1190
www.cheris-bakery.com

NORDHUS DENTISTRY
Byron J. Nordhus, D.D.S.
721-6730
No Dental Insurance? No Problem!
View our membership plan at
www.nordhusdentistry.com

Linda Seiwert, REALTOR®
Current Member of St. Catherine of Siena
PenFed Realty • 3531 N. Ridge Road, Wichita, KS 67205
lindaseiwert@penfedrealty.com • www.LindaSeiwert.com
Cell 316 648-9306 • 316 721-9271
A member of the franchise system of BHH Affiliates, L.L.C.

BERKSHIRE HATHAWAY HomeServices PenFed Realty

SCOTT & JULIE STREMEL
SEAS PARISHIONERS
www.stremelandassociates.com
2872 N. Ridge Rd. • Wichita
Bus: 722-6182
Cell: 518-9083

Ann Klein
Realtor®
Cell: 316.990.5566 Office: 316.722.6182
2872 N. Ridge Road, Suite 112
Wichita, KS 67205
aklein@weigand.com

AVAILABLE FOR A LIMITED TIME
ADVERTISE YOUR BUSINESS HERE
Contact James Bradley • jbradley@4LPi.com • (800) 950-9952 x2655

Avery Automotive Repair & Towing
412 W. Main St.
Valley Center, KS 67147
Ph: (316) 755-0309
M: (316) 765-4401
Brendan McGettigan
President
Parishioner
www.averyautomotiverepair.com
Hours: Mon-Fri 7am-6pm

WEALTH ADVISORS
Serving successful individuals and business owners.
• Wealth Management & Retirement Planning
• Business Succession & Estate Planning
• Advanced Financial & Charitable Planning
Jeff Wetta, Financial Advisor Parishioner
jeff.wetta@vwealth.com | 316-613-7570 | VWealthAdvisors.com

Orth Roofing
Wichita ReRoofing Specialists
In Business Since 1987
Brett Orth • 316-721-9961
Parishioner

Dr. Melanie Summers
12412 W. Kellogg
Wichita
316-201-6292

Freddy's STEAKBURGERS®
Freddy is proud to have been a part of the Diocese of Wichita all his life!

Exquisite Listings,
Stylish Staging,
Superb ServiceExpect it.

the Insurance GUYS
GARY L. SOMMERHAUSER • PAUL ISEMAN
LANCE DOLL • ADAM KLAUSMEYER
Business • Home • Auto • Life
416 S Market St. • Wichita, KS
(316) 943-1166

BERKSHIRE HATHAWAY HomeServices PenFed Realty
Jennie Gronniger
Active Parishioner
REALTOR 316.250.7923
Call today for your free home analysis

ECK & ECK MACHINE CO., INC.
4606 West Harry
316-942-5924
Paul and Bettie Eck
St. Catherine of Siena Parishioners

OPEN SUNDAYS
MARCH-JUNE & SEPTEMBER-DECEMBER
"Landscaping with a Plan"
11200 W. Kellogg • 722-7516
www.bradynursery.com

HELLAND ROOFING & EXTERIORS
WICHITA'S REROOF SPECIALIST
316-686-8200

• Roofing
• Guttering
• Siding
• Windows

OXFORD VILLA
ACTIVE SENIOR APARTMENTS
320th St. N.
West of Inland
www.OxfordatNewMarket.com

WILDCAT AGRI-SERVICES
PIONEER PREMIUM SEED & TREATMENTS,
CROP INSURANCE, AGRONOMY SERVICES,
FIELD DAYS, SEED WHEAT, SEED DELIVERY,
AND PERSONAL SERVICE

KOREY CARMICHAEL 316-641-3160
TYE ENGEL 316-217-6253
MIKE MCGINN 316-772-7171



Anita COCHRAN REALTY
Member St. Catherine Broker-Owner
316.304.6575

Oxler Family Dentistry
Jude A. Oxler, D.D.S. • George P. Oxler, D.D.S.
St. Catherine of Siena Parishioners
900 N. Tyler Road, Suite 2 • Wichita, KS 67212
722-2596

Hampel OIL
3727 S. West St. • Wichita, KS 67217 • (800) 530-5848
• Fuel
• Lubricants
• Chemicals
• Diesel Exhaust Fluid
www.HampelOil.com

State Farm
Brian Haight Agent
306 S. Meridian Ave.
Valley Center, KS 67147
Bus (316) 755-9999
brian@insuremevc.com

ULTRA MODERN POOL & PATIO
722-4308
ultramodern.com
POOLS • SPAS • PATIO
Rita Rowlen and Kara Weed
Owners • Members St. Catherine
Three Locations: 1420 Nelson, Derby
8100 W. Kellogg • 2431 N. Greenwich Rd

SPEXARTH PLUMBING INC
New Construction • Remodel • Repair
316-796-1175
Mark Spexarth • Colwich, KS
License #5064

Misha A. Anderson, OD
Family Practice Optometry
Surgical Comanagement • Contact Lenses
3910 North Ridge Rd.
Wichita, KS 67205
316-721-2701
grenevisiongroup.com

K2 PROPERTIES, LLC
Leasing Houses and Townhomes
Specialize in Maize & West Wichita
Parish Member • Office: 316.721.7844

APEX Lawn Irrigation, Inc.
Irrigation Installation and All Irrigation Services
www.apexlawnirrigation.com
Fax: 316.721.7863 • apex@apex.kscoxmail.com



For ad info. call 1-800-950-9952 • www.4lp.com

St. Catherine of Siena, Wichita

A 4C 02-0838