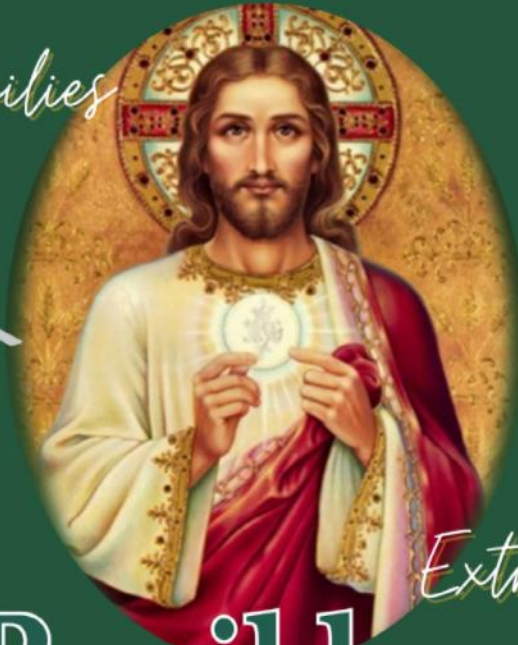


Ordinary Families



Extraordinary Faith

St. Benilde

CATHOLIC CHURCH

1901 Division Street • Metairie, Louisiana 70001

Church Office: (504) 834-4980 • Church Fax: (504) 831-5810 • Church Email: stbenildechurch@arch-no.org

Fr. Matthew's Cell (985) 630-6398

www.stbenilde.org

CLERGY

Rev. Matthew Johnston, Pastor
Deacon Stephen Gordon
Deacon Mike Sorensen

**DIRECTOR OF PASTORAL
INITIATIVE** Audrey Huck

OFFICE MANAGER
Colleen Hezeau

BAPTISMS
First and Third Sundays of the
month at Noon. Please call the
Parish Office for more information.

MATRIMONY
Please contact a priest/deacon 8
months prior to your wedding.

FUNERALS
Arrangements may be made at the
Parish Office.

MASS TIMES

Saturday Vigil ... 4:00 p.m.
Sunday ... 9:00 a.m., 11:00 a.m.
& 4:00 p.m.
Mon., Wed., Fri. ... 7:00 a.m.
Tuesday and Thursday... 5:30 p.m.

HOLY DAYS OF OBLIGATION

See Inside the Bulletin
for Schedule

CONFESSION

Saturday ... 3:00—3:45 p.m.
Tuesday ... 5:00—5:25 p.m.
Thursday ... 5:00—5:25 p.m.
and by appointment at the Parish
Office

DEVOTIONS

Novena to Our Lady of Perpetual
Help Following 5:30 p.m.
Mass on Tuesday

NEWCOMERS

Call the Parish Office to receive a
New Parishioner Registration
Packet.

ST. VINCENT DE PAUL SOCIETY

St. Benilde Conference
(504) 233-3246.

ST. BENILDE SCHOOL

Mr. Thomas Huck, Principal
1801 Division Street • Metairie, LA
(504) 833-9894 • www.stbenilde.com

DIVINE MERCY ADORATION CHAPEL

Perpetual Eucharistic Adoration from 7:00 a.m. Monday till 10:00 p.m. Friday

Ministers of the Liturgy & Mass Intentions

Saturday, January 4, 2025
4:00 p.m.

Intentions: Carl A. Guidroz, Jr.,
Honor of St. Jude, Merle & Charles Dittmer,
Patrick C. McKinney, Flora Maria Be,
Louis Roussel, Robert Phelps,
Leigh Whitman Director (L), Mary Gayle,
Eric Cifreo
Song Leaders: Traditional Choir

Sunday, January 5, 2025
9:00 a.m.

Intentions: Margie Bucher
Song Leaders: Traditional Choir

11:00 a.m.

Intentions: Paul Hymel, Jr.,
Mark Alan Capretto, Fr. Matthew Johnston(L),
Yvonne Morise (L), Darren Dunaway (L),
Lawrence Chighizola
Song Leaders: Contemporary Choir

4:00 p.m.

Intentions: Nancy Carline (L)
Cantor: Lauren Gisclair
Organist: Kristin Alvarado

January 6-10

Monday	7:00 a.m.	Maria Mercedes Cabrera
Tuesday	5:30 p.m.	Muriel Surcouf
Wednesday	7:00 a.m.	Theresa Montgomery
	8:15 a.m.	SBS Families
Thursday	5:30 p.m.	Rose Ann Walle (L)
Friday	7:00 a.m.	Jay Preskitt(L)

This Week at St. Benilde

Monday, Jan. 6	7:00 a.m. Mass
Tuesday, Jan. 7	Reconciliation 5-5:25 p.m. in the Church 5:30 p.m. Daily Mass Cub Scout AOL Den Mtg. 7:00 p.m. in the Teen Center
Wednesday, Jan. 8	Women's Bible Study 6:15 a.m. in the Parish Office 7:00 a.m. Mass 8:15 a.m. School Mass Grandparents' Club Mtg. 7:00 p.m. in the Cafeteria Red Bird Ministries-Grieving Parents Support Group 7:00 p.m. in the Parish Office That Man is You! 7:30 p.m. in the Teen Center
Thursday, Jan 9	Reconciliation 5-5:25 p.m. in the Church 5:30 p.m. Daily Mass Sisterhood Circles Mtg. 6:30 p.m. in the Teen Center
Friday, Jan. 10	7:00 a.m. Daily Mass Faculty Praise & Worship 3:15 p.m. in the Church
Saturday, Jan. 11	Little Flowers 8:30 a.m. in the Teen Center & Library Catechesis of the Good Shepherd 9:00 a.m. in the atrium Reconciliation 3:00-3:45 p.m. Vigil Mass 4:00 p.m. Night at the Races 7:00 p.m. in the Cafeteria

You're Invited To Join!



Labeled & LOVED
Sisterhood Circles

The mission of the Labeled and Loved Sisterhood Circles program is to bring special needs moms with their unique lived experiences into a community where they can arrive accepted, feel seen, be celebrated, and find belonging.

Sign up here to learn more!



**Circle.
Care.
Comfort.
Celebrate.**



- ♥ Monthly in-person meetings
- ♥ Trained Support Sisters
- ♥ Compassionate Leadership
- ♥ Small group setting

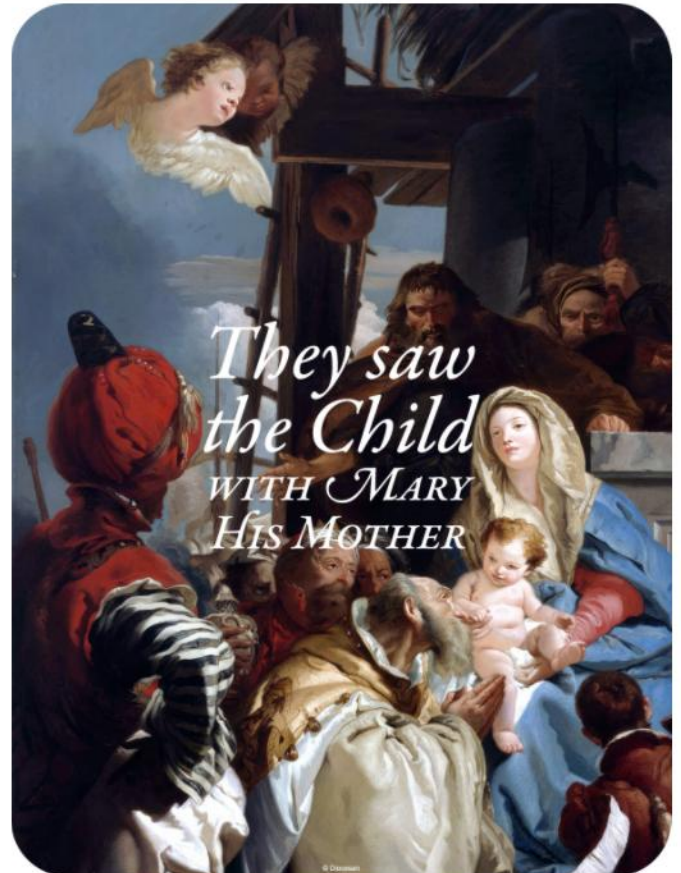
@labeledandloved

Sisterhood circles is a program of a non-profit organization called "Labeled & Loved". It's a place where special needs moms can connect in small groups to learn tools to avoid caretaker burnout and build friendships. We meet at St. Benilde the second Thursday of each month from 6:30-8:30 PM. Registration fee for each participant is \$25 for the year.

The curriculum for each session consists of real-life stories by real-life caregivers with relative discussion questions. During the discussion questions we can break up into small groups of 5-6 people. A licensed professional counselor has screened each story and set of questions for competency and sensitivity. We try to focus on self-worth, confidence, identity, healing, surrender, fun, peace, and boundaries.

To learn more, contact Caroline Graham at csmith563@gmail.com.

JANUARY 12
ROOTED NIGHT!
Witness given by Nick Flynn
Food, Formation & Fun!
5:15-7:30 PM



WE HAVE COME TO DO HIM HOMAGE
— EPIPHANY OF THE LORD —

ST. BENILDE MEN'S CLUB **CHILI** **COOK OFF TRIFECTA**

CHILI COOKING 🌶️ CORNHOLE TOSS 🌶️ JALAPENO EATING

WANTED: Teams to participate in the **10th Annual Chili Cook Off Trifecta**

Date: Saturday, January 25th, 2025

Time: Contestants arrive by 8:45 am
Gates open to public at 12:00 pm

Where: St. Benilde School, 1801 Division Street

Team: 4 min, 6 max per team

Cost: **\$150/team** (limited space available)

Teams must compete in all three parts of the Trifecta:



Chili Cook-off



Cornhole Toss



Jalapeno Eating Contest

Optional category: **Louisiana Lagniappe** (your favorite Louisiana inspired dish)

Prizes awarded for each team event and All Around winner.
All Around Champ has entry fee donated to School/Church of choice

Contact Dax Barrett 504-931-7489, David Mocklin 504-352-6124, or Paul Killian 504-908-3166 or sbschilicookoff@outlook.com for details and rules.

Check out **St. Benilde Men's Club Chili Cookoff Trifecta** on



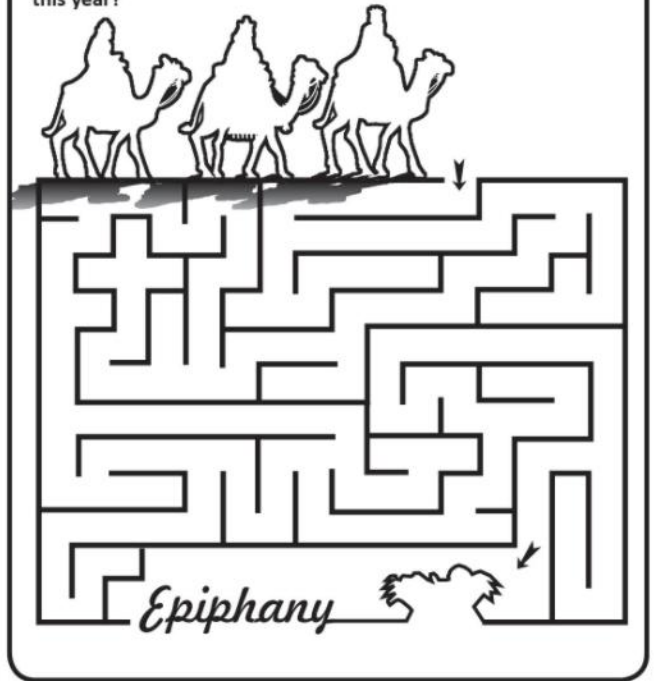
General Business

St. Benilde Catholic Church....Rooted and Built Up in Christ



Epiphany, Mt 2:1-12

Three wise men were searching for Jesus. They traveled from very far away to meet him. They followed a star and finally found him in Bethlehem. They adored him and gave him special gifts of gold, frankincense and myrrh. What gift would you like to give to Jesus this year?



Help support
St. Benilde Church through

amazonsmile

You shop. Amazon gives.

1

Go to
smile.amazon.c
om and log into
your existing
Amazon
account

2

Select St.
Benilde
Catholic
Church as
your
designated
charity

3

Start
Shopping!



In prayer Father Matthew entrusted the SVDP Christmas Angel tree gift delivery to Our Blessed Mother. Forty families received over 200 gifts and gift cards on December 21, 2024. Pictured are SVDP members in a selfie photo taken by Fr. Matthew before the gift distribution.



Archdiocesan and Larger Church News:

Find your
IDENTITY
in Christ

Scan to Register

Visit ccrno.org for more info!

Holy Spirit Women's Retreat
Jan. 24-26, 2025

CATHOLIC
CHARISMATIC RENEWAL
NEW ORLEANS

Dr. Carol Razza **Fr. Michael Voithofer** **Lisa Flood** **Janice Charbonnet**

Robe • Ring • Sandals

Luke 15:22

DoubleTree Hilton
1521 W Pinhook Rd.
Lafayette, LA 70503

Music By
Sparrow Song!

Price Increase
December 11th!

I TRUST IN YOU
MAR 15 2025

ARCHDIOCESE
NEW ORLEANS
MEN'S
CONFERENCE

REGISTER AT
NOLACATHOLICMEN.COM



 **ARCHDIOCESE OF**
NEW ORLEANS
Office of Marriage and Family Life

Silver Wedding Anniversary

Sunday, February 16 @ 3:00 PM
Our Lady of the Rosary
Please register with the parish office no later than
Friday, January 17, 2024.

CALLING ALL SUPERHEROS

65TH ANNUAL CUB SCOUT PARADE
SATURDAY, FEBRUARY 15, 2025 @ 10 AM

INTERESTED IN HAVING YOUR ORGANIZATION JOIN US ON THE PARADE ROUTE?
WE INVITE ALL SCOUTS, CHEER SQUADS, & DANCE TEAMS!

\$10
PER CHILD PARTICIPANT

BANG

SCAN TO SIGN UP



Diocesan is proud to now be printing *St. Benilde's Sunday Bulletin*

You are invited to help support our Parish!

**For opportunities to advertise,
please call 800-997-4986**

YOUR LOCAL REAL ESTATE EXPERT
TIM PITRE, Realtor
504-312-9162
Parishioner
504-941-0828 Office
www.borrousorealty.com



McKenzie's your Tree Co.
 Licensed & Fully Insured
456-1300/897-5585
10% Discount
 Tree Care and Landscaping
 Family Owned and Operated

JOHN MONTALBANO
PLUMBING & HEATING
114 Colby Street
833-6500
 Lic #3655



Tax, Litigation & Succession Attorneys



**BUTLER
McDONALD**

504-294-3274 • www.bmcdlaw.com


**NORA VADEN
HOLMES**
 INSURANCE AGENCY



**Nora Vaden
Holmes**
831-0002
 When experience &
 service matters
 117 Metairie Lawn Drive
 Metairie Lawn @ Metairie Road

mike rougee
HEATING & AC
 Sales & Service
LENNOX
833-0520 | 441-6453

IN LOVING
MEMORY OF



Avery Murphy

**FREE CHECKING
+ FREE GIFT**
Open An Account Today!
 504.834.6330 | METAIRIEBANK.COM | MEMBER FDIC



ALVIN & RYAN GERNARD
PM AUTOMOTIVE SERVICE, INC.
 Personalizing Preventative Maintenance & Repair
716 Shrewsbury Rd. • Jefferson
835-4321
 LA State Inspection Station (Brake Tags)




ETS EXECUTIVE TAX SERVICE
 Year Round Tax Services
780-0456
 2901 Houma Blvd.
 Laurie Phillpott Schmaltz, EA *naea*

#ThankYouForYourPriesthood



eatwell
 DRIVE-THRU AND CATERING
 REAL FOOD
 REAL FAST
www.eatwell.kitchen



**ADVERTISE
HERE**

**Promote your Business
AND Support your Parish.**

Ray Kelly ~ 504-338-3058
rkelly@diocesan.com

**1 Get this bulletin
emailed to you
every week.**



eatwell
 DRIVE-THRU AND CATERING
 REAL FOOD
 REAL FAST
www.eatwell.kitchen

catholicmatch®
 Louisiana
CatholicMatch.com/goLA



**Simply go to
www.DM.CHURCH/5577**

EWTN.COM/RADIO



EWTN Global Catholic Radio
TUNE IN

**PRECISION
LAW GROUP**



-Wills
-Successions
-Powers of Attorney
-Business Consulting
-Construction Disputes

David C. Bernard
 SBS Parent Owned
PrecisionLawGroup.com
 504-884-8911

...or scan →



DISCOVERMASS

