



Fifth Sunday in Ordinary Time

Jesus cured many who were sick with various diseases, and he drove out many demons.

Mark 1:34

THE CATHOLIC PARISHES OF MILLBURY SAINT BRIGID + OUR LADY OF THE ASSUMPTION

PARISH OFFICE

59 Main Street, Millbury, MA 01527

Mon. - Thurs. 8:30 AM to 12:30 PM

(508) 865-6624 • Fax: (508) 865-3101

www.stbrigidparish.org

Assumption Parish Phone: (508) 865-2657

www.assumptionmillbury.org

ASSUMPTION SCHOOL

17 GROVE ST.
MILLBURY, MA 01527
(508) 865-5404

WWW.ASSUMPTIONSCHOOLMILLBURY.ORG

Julie Olson

Principal

ST. VINCENT DE PAUL SOCIETY OUTREACH

774-262-5506

MASS TIMES

St. Brigid Church

59 Main Street

Saturday: 4:00 PM

Sunday: 7:00 AM and 11:00 AM

ASSUMPTION CHURCH

10 Waters Street

Sunday: 9:00 AM

WEEKDAY MASS TIMES

Monday & Thursday
9:00AM

Tuesday & Wednesday
7:00AM

All at Assumption Church

PARISH STAFF

CLERGY

Rev. Daniel R. Mulcahy, Jr.
Pastor

Rev. Mr. Ronald B. Buron
*Deacon
Facilities
Safe Environment*

ADMINISTRATION

Ronald Marlborough
Buildings and Grounds

PASTORAL ASSOCIATES

Sister Jeanne Richard, S.A.S.V.
Pastoral Care Ministry Emerita

Gregory Bernard
*Adolescent & Young Adult Faith Formation
Youth Ministry
Communications*

Deborah R. Blicharz
*Children's Faith Formation
Community Life and Outreach*

Claudette Belair
Music Ministry

SACRAMENTS

Baptism

Baptisms are celebrated each month. To prepare for your child's Baptism, parents will attend a preparational session. For more information, or to make arrangements, please call the parish office.

Penance and Reconciliation

Saturdays 3:00 PM to 3:45 PM
or anytime upon request.

Marriage

Please call the parish office at least one year in advance.

Anointing of the Sick and Communion Calls

Please call the office when a parishioner is confined at home, is in the hospital, or placed in a nursing home or hospice. Holy Communion is brought to shut-ins upon request.

Mass Intentions FOR THE WEEK


Sat., February 6

4:00 PM **Gladys Quitadamo**
By: The Mazzone family

Sun., February 7

7:00 AM **Daniel Mazeika, Jr.**
By: The family

9:00 AM **50th Wedding Anniversary**
Richard and Judy Croteau
Renewal of Vows

11:00 AM **William Devoe, 15th Anniversary**
By: The family

Mon., February 8

9:00 AM **Intentions of the Assumption School**
8th Grade Religion Class
By: Deborah Blicharz

Tue., February 9

7:00 AM **In Honor of St. Jude**
By: A parishioner
The People of the Catholic Parishes
of Millbury

Wed., February 10

7:00 AM **Virginia Dower**
By: Fr. Dan

Thu., February 11

9:00 AM **The Deceased Members of the**
Richard Family
By: Sr. Jeanne

Sat., February 13

4:00 PM **Ann Mulcahy**
By: Helen Prue

Sun., February 14

7:00 AM **Andrew J. Mulcahy, Jr.**
By: Rita Cogliandro

9:00 AM **John "Jack" Kennedy**
By: Aline Bourdeau

11:00 AM **Edward F. Wall, 8th Anniversary**
By: The family

MINISTRY SCHEDULE

**Saturday, Feb. 13, 4:00 PM at St. Brigid**

AS: R. Prue, T. Yaz
L: D. Blicharz
EM: P. Michalak, K. Levitre

Sunday, Feb. 14, 7:00 AM at St. Brigid

AS: J. Mazeika
L: T. Mattus
EM: N. Tabor, A. Nocchi

Sunday, Feb. 14, 9:00 AM at Assumption

AS: J. Giro, M. Hoban
L: L. Flagg
EM: J. Hoban, B. McClear

Sunday, Feb. 14, 11:00 AM at St. Brigid

AS: N/A
L: M. & J. Piselli
EM: P. & J. Prince

SCRIPTURE READINGS 2021

SUNDAY Feb. 7	Jb 7:1-4, 6-7/1 Cor 9:16-19, 22-23/Mk 1:29-39
MONDAY Feb. 8	Gn 1:1-19/Mk 6:53-56
TUESDAY Feb. 9	Gn 1:20—2:4a/Mk 7:1-13
WEDNESDAY Feb. 10	Gn 2:4b-9, 15-17/Mk 7:14-23
THURSDAY Feb. 11	Gn 2:18-25/Mk 7:24-30
FRIDAY Feb. 12	Gn 3:1-8/Mk 7:31-37
SATURDAY Feb. 13	Gn 3:9-24/Mk 8:1-10
SUNDAY Feb. 14	Lv 13:1-2, 44-46/1 Cor 10:31—11:1/Mk 1:40-45

ST. JOSEPH CANDLE BURNING FEB 6 - FEB. 12

At Assumption Church

In Loving Memory of

Deceased Members of the Piorkowski Family

Requested by: Cathy Piorkowski

We Believe In The Power Of Prayer



MINISTRY OF PRAYER

**Prayer Line: 508-865-6853
or 508-756-9854**

If you or someone you know is in need of prayer, call one of the confidential prayer lines listed above.



In Loving Memory



John & Julia Anger	Armand Desorcy	Lillian Langevin	Elaine Roy
Lee Aubin	Diane Dion	Tan Le	Darlene Russell
Jeanne Augustine	Joseph Dunn	Noe R. LeBeau, Sr.	Dorothy Russell
Larry F. Army	Timothy P. Eckland	Edward L. Lemoine	Marshall Russell
Gregory Barlay	Jonathan Favreau	Kevin Lemoine	Michael W. Russell
Albina Bartkus	Lois M. Fisher	Rita Lemoine	William Russell
Edward Bartkus	Gabrielle G. Gaboriault	Mark Lizotte	Bob & Rita Shea
Ann Beesley	Joe & Jean Gagliardi	William and Irene Louis	Gino Silveri
Arthur G. Boucher	William Gain, Jr.	Joseph Matthews	Lucien Sirard
Patricia Bourdeau	Bernice Gaudere	Margaret Matthews	Maureen L. Stacy
Sylvio E. Bourdeau	Reggie Gauthier	Leo & Jane Metivier	C. Richard Stockhaus
Joseph & Rose Cataldo	Ruth Gonsorcik	Kenneth Michalak	Joseph F. Stockwell
Frank Cammuso	John & Irene Guyan	Mary B. Mrozinski	James Tabor
Philip Chabot, Sr.	Robert James (Sam) Guyan	Lorraine Mooney	Neal R. Thomas
Rita Cogliandro	Betty Hamilton	Elsie Moquin	Connor Tronerud
Albert and Helen Collette	Derek Hamilton	Ann Mulcahy	Chester Urban
Pat and Tiff Correia	Thomas & Patricia Hamilton	Daniel R. Mulcahy, Sr.	Robert E. Vaillancourt
Donna "Gain" Cournoyer	Robert J. Hamilton	Albert Nikosey	Nancy Vaillancourt
Karen A. Courville	Matthew Hartline	Evelyn Noonan	Lucille Vecchione
Roland O. Couture	John Huchowski	Joseph Noonan	William T. Walsh
Arthur "Archie" Cronin	Paul J. Jandron	Rosemary Norton	Paula Ward
Gerald & Peggy Croteau	Joanne Juskavitch	John P. & Bridget O'Malley	Margaret Wendt
George A. D'Auteuil, Jr.	Joseph V. Kane	Virginia Richnick	Dolores White
George A. D'Auteuil, Sr.	Richard Kroll	Arlene Riedle	Ronald Woodward
Kathleen M. DeCillis	Michael P. Krumsiek	Stephen Rodwill	Frank J. Yaz
Raymond DeRouin			



May They Rest in Peace



Would you like to remember a loved one in our Remembrance section? The cost of enrollment will be a \$50 donation for the year. Please contact the office (508) 865-6624 to enroll your loved one(s).

YOUTH & FAMILY FAITH FORMATION



Faith Formation Update



Due to the increase in local COVID numbers, we have moved to a fully remote Faith Formation format in all grades 2-10. We have adjusted curriculums accordingly and are in the process of communicating revised schedules to all families. We will remain in this remote model at minimum through the end of February. We pray that all our families have a healthy and blessed 2021!



Given the continued increasing COVID-19 cases, we will be postponing the start of the Little Lambs program through May. Please watch this space for updates. Wishing you all a blessed and healthy new year!



In the charity of your prayers, please remember the souls of

Neil W. Callahan

Ronald P. Plamondon

Phyllis T. Sauriol

Brian P. Silver

Carol Ann Sullivan

who have gone home to God. May they rest in Christ's eternal light and peace.

Care for Creation Corner



"The environment...is on loan to each generation, which must then hand it on to the next." (Laudato Si 159)

Unused food can be composted which puts it to good use if your family does any type of gardening.

Discuss the modern meaning of the phrase in Genesis 2:15 - "to keep and cultivate the garden".

What is expected of us to "keep it"?

Time how long you are in the shower. Try to keep your shower to less than 4 minutes on average.

Use rechargeable batteries and eliminate the waste, consume less!! Example: Keeping your phone for 4 years instead of 2 has an environmental impact.

Check storyofstuff.org

Discuss with the oldest members of your family their perspectives on protecting the environment. Express your hopes for the future.

Ministries



Society of St. Vincent de Paul
Diocese of Worcester
Catholic Parishes of Millbury
Phone: 774-262-5506

MONTHLY MEETINGS

Third Sunday - 10:00 AM
The Offices of the
Catholic Parishes of Millbury
New Members Welcome!

PARISH FOOD COLLECTION

Monthly: First Weekend
**Food Bins are located in the
Main Entrance of the Church**

**All food donations must be dropped off on food drive
dates and placed in the large blue bins only, no
exceptions. NO Perishables, NO Cleanouts.**

FOOD DISTRIBUTION

Monthly: First Weekend - 12:15 PM
St. Brigid Church Hall

FOOD PANTRY NEEDS LIST

THE PANTRY IS IN NEED OF:
Oatmeal, Pancake Mix, Pancake Syrup,
Paper Goods, Snacks

Please No Perishable, Expired Dates, or Pet Food.

Annual Partners in Charity Appeal 2021

Recently, many of you received a letter signed by your Pastor addressed to parishioners of St. Brigid Parish and Our Lady of the Assumption Parish about the 2021 Annual Partners in Charity Appeal.

The timing of this letter has caused, understandably, some confusion. People have wondered if this was a follow-up to the 2020 appeal which fell short of its \$5 million goal, asking for an additional gift to help make up the shortfall. That is not the case.

The most recent letter you received is, rather, about the 2021 Appeal. You may wonder why the Appeal is starting so early in the year as opposed to the usual spring roll-out, especially when many of us are still paying on pledges made to the 2020 Appeal.

Our Diocese of Worcester is in the middle of a large Capital Campaign called Legacy of Hope, targeted with raising more than \$32 million for several needs including Catholic Education, but, most crucially, for retirement and long-term care for priests which is currently short-funded to the tune of an unsustainable \$1 million per fiscal year. In short, for every dollar parishioners in each parish pledge or contribute to the Legacy of Hope Campaign, sixty cents would go to the campaign, while forty cents would remain in the parishes for needs right here.

Many parishes in the diocese have already conducted the Legacy of Hope Campaign in earlier phases. Here in Millbury, our parishes are in Phase IV of the Campaign which will begin in earnest this coming spring, along with 38 other parishes in the diocese. For these 40 parishes, the annual Partners in Charity Appeal is being moved up for this year only to keep it from conflicting with this spring's Legacy of Hope Capital Campaign.

I hope this clears up some of the confusion, rather than muddying the already murky waters!

Please watch the bulletin and the parish websites for more information on both of these vital outreaches for our Church in the Diocese of Worcester.

Father Dan

Mass Intentions and Candles

DID YOU KNOW? The sanctuary lamp or sometimes called a sanctuary light/candle burns before the tabernacle to indicate and honor the presence of Christ ... to let us know that Jesus is home.

DID YOU KNOW? That beginning on the Solemnity of the Immaculate Conception 2020 and extending to the same feast in 2021, Pope Francis has proclaimed a special "Year of St. Joseph."

DID YOU KNOW? To honor St. Joseph, candles are being made available for your intentions at the statues of St. Joseph in both St. Brigid and Assumption churches.

DID YOU KNOW? Mass Intentions, Sanctuary Candles, and St. Joseph Candles are available for 2021. Masses are still available on weekends and weekdays.

If you would like to schedule a Mass, Sanctuary Candle, or St. Joseph Candle please call the office at 508-865-6624, send an email to secretary@stbrigidparish.org or stop by the office during regular business hours, Monday – Thursday from 8:30 AM until 12:30 PM.

Please be sure to include your name and phone number in any contact along with your request.





My Child,

You may not know me, but I know everything about you. I know when you sit down and when you rise up. I am familiar with all your ways. Even the very hairs on your head are numbered. For you were made in my image. In me you live and move and have your being. For you are my offspring. I knew you even before you were conceived. I chose you when I planned creation. You were not a mistake, for all your days are written in my book. I determined the exact time of your birth and where you would live. You are fearfully and wonderfully made. I knit you together in your mother's womb. And brought you forth on the day you were born. I have been misrepresented by those who don't know me. I am not distant and angry, but am the complete expression of love. And it is my desire to lavish my love on you. Simply because you are my child and I am your Father. I offer you more than your earthly father ever could. For I am the perfect Father. Every good gift that you receive comes from my hand. For I am your provider and I meet all your needs. My plan for your future has always been filled with hope. Because I love you with an everlasting love. My thoughts toward you are countless as the sand on the seashore. And I rejoice over you with singing. I will never stop doing good for you. For you are my treasured possession. I desire to establish you with all my heart and all my soul. And I want to show you great and marvelous things. If you seek me with all your heart, you will find me. Delight in me and I will give you the desires of your heart. For it is I who gave you those desires. I am able to do more for you than you could possibly imagine. For I am your greatest encourager. I am also the Father who comforts you in all your troubles. When you are brokenhearted, I am close to you. As a shepherd carries a lamb I have carried you close to my heart. One day I will wipe every tear from your eyes. And I'll take away all the pain you have suffered on this earth. I am your Father and I love you even as I love my son, Jesus. For in Jesus, my love for you is revealed. He is the exact representation of my being. He came to demonstrate that I am for you, not against you. And to tell you that I am not counting your sins. Jesus died so that you and I could be reconciled. His death was the ultimate expression of my love for you. I gave up everything I loved that I might gain your love. If you receive the gift of my son, Jesus, you receive me. And nothing will ever separate you from my love again. Come home and I'll throw the biggest party heaven has ever seen. I have always been Father and will always be Father. My question is ... Will you be my child? I am waiting for you.

Love ... Your Dad ... Almighty God



This Week

SATURDAY ~ FEBRUARY 6

No Events

SUNDAY ~ FEBRUARY 7

SVDP Food Distribution @ SBH 12:15 PM

SLAA @ SBH 7:30 PM

MONDAY ~ FEBRUARY 8

AA @ SBH 7:00 PM

GA @ OLAH 8:00 PM

TUESDAY ~ FEBRUARY 9

OA @ SBH 6:30-8:00 PM

Cub Scouts @ OLAH 6:00-8:00 PM

WEDNESDAY ~ FEBRUARY 10

No Events

THURSDAY ~ FEBRUARY 11

Girl Scouts @ OLAH 6:00 PM

Cub Scouts @ SBH 6:30-8:00 PM

FRIDAY ~ FEBRUARY 12

No Events

SATURDAY ~ FEBRUARY 13

Scouts Pinewood Derby @ OLAH 10:00 AM - 3:00 PM

SUNDAY ~ FEBRUARY 14

SLAA @ SBH 7:30 PM

KEY TO LOCATIONS

SBC=St. Brigid Church OLAC=Assumption Church
 SBH=St. Brigid Hall OLAH=Assumption Hall
 CPO=Catholic Parish Office OLAS=Assumption School

JOB OPPORTUNITY

Parish Secretary

The Catholic Parishes of Millbury is looking for a secretary to work Monday through Thursday 8:30 AM - 3:30 PM. Must be computer literate, and familiarity with office and church responsibilities would be an asset. Salary and hours are negotiable. Call Deacon Ron Buron at 508-865-6624 if interested or with questions.



FINANCIALS

Catholic Parishes of Millbury

Income

January 24, 2021

Regular Weekly Collection	\$3,389.00
Ordinary Collection Monthly	\$1,128.53
Online Giving	\$995.00

Total Regular Weekly Collection \$5,512.53

Other Parish Income:

Debt (incl. online when appl.)	\$311.00
Specialty Ministries (incl. online when appl.)	\$225.00
Utilities (incl. online when applicable)	\$307.00
Mass Stipends	\$30.00
Candles	\$40.00
In Remembrance	\$450.00
Catholic Free Press	\$39.00
Initial Offering	\$50.00
OLA Reimbursement	\$3,591.91
Christmas Flowers	\$25.00

Total Other Income \$5,068.91

Total Income \$10,581.44

Catholic Parishes of Millbury

Cash Flow

January 22-28, 2021

Payroll (1/23)	\$2,990.08
PayChex, Inc. (Payroll Processing Fees)(1/9 & 1/16)	\$69.60
Payroll Taxes (1/9)	\$1,066.89
RC Bishop of Worc. (Old Debt)	\$4,021.00
RC Bishop of Worc. (403B Plan)	\$370.36
RC Bishop of Worc. (Catholic Univ)	\$420.00
Eversource (Gas)	\$6,441.71
KMB IT Consult (Phones)	\$99.13
Laurence Candle (Altar)	\$207.60
National Grid (Electric)	\$993.11
SVDP (Stipend)	\$260.00
USPS (Stamps)	\$165.00
WB Mason (Office)	\$84.97
Assumption School (Catholic Schools Appeal)	\$1,000.00

Total monies paid \$18,189.45

TAX STATEMENTS

If you would like to receive a tax statement for this year, please call the parish office during regular business hours (Monday through Thursday from 8:30 AM until 12:30 PM) or send an email to secretary@stbrigidparish.org.



Assumption School

Millbury, MA

A legacy of learning...a history with heart

We believe in:

FORMATION OF THE WHOLE CHILD

ACADEMIC EXCELLENCE

INTEGRITY

TRADITION

HONOR



Grade 3 Winter Silhouettes



SUPPORT ASSUMPTION SCHOOL

Earn points for Assumption School to acquire school supplies, musical instruments, playground equipment, and cash rewards for any educational needs.



www.pricechopper.com/tools-schools Code: 14233



Stop&Shop®

www.stopandshop.com

Click "Register" and Use Assumption School Code: 41076

SENIOR CENTER NEWS

BLOOD PRESSURE CLINIC

Every Tuesday from 9:00 AM - 10:00 AM

The Blood Pressure Clinic is held inside now.

Come to the front door and we will escort you from there.

Masks are required, along with social distancing!

GRAB N' GO MEALS

Lunch meals will be available to be picked up daily at the front door at 11:30 AM. The menu is available on the town website www.townofmillbury.org, or our Millbury Senior Center Facebook page. A 48 hour reservation is required. For more information or reservations call us at 508-865-9154.

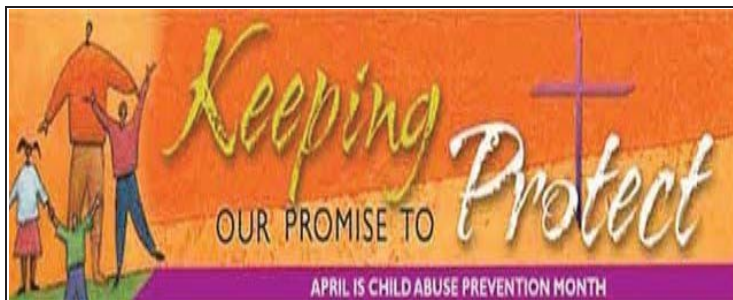
MILLBURY SENIOR CENTER IS NOW ACCEPTING SNAP APPLICATIONS (Food Stamps)

Appointments are on Tuesdays and Thursdays between 10:00 - 2:00 PM. Call 508-865-9154 to schedule an appointment and obtain the required documentation.

This project has been funded at least in part with Federal Funds from USDA. This institution is an equal opportunity provider. The USDA does not endorse any goods, services or enterprises.

The Senior Center is closed to the Public.

While the building is not open to the public the Food Pantry at the Millbury Senior Center is available from 9AM to 1PM Monday thru Friday by calling 508-865-9247 for an appointment. Our food pantry is fully stocked at this time. Please tell us what you need and you can pick it up or we will deliver it. We are still here to answer any questions you may have and we are available for your transportation to doctors appointments, or if you need to go to the drug store for your prescriptions, we will take you there. If you don't have a mask, we will give you one. Also if you are in need of a home delivered meal, give us a call and we will set you up to get one delivered to you. Keep safe and remember to wear a mask if you go out and to wash your hands frequently.



If you or someone you know has been sexually abused by a priest, religious, or lay person working for the Church, and you need a place to talk about your feelings of betrayal or hurt by the Church, call Judith Audette at the Office for Healing and Prevention, (508) 929-4363. A 24-hour-a-day confidential voicemail is available.

Catholic schools prepare every student to meet the challenges of their future by developing their mind, yes, but also their body and their soul and spirit.

~ David Vitter

COVID-19

ENTER/EXIT: Use the front doors only at both churches for entry and exit. Only in an emergency, should the nearest safe exit be used. Please go directly to and from your vehicles before and after Mass.

ACCESSIBILITY: Anyone needing the accessible elevator at Assumption Church will still be able to do so via the rear hall door.

COVER UP: Masks must be worn at all times in the church except when it is time to receive Holy Communion.

SEATING: Every other pew has been taped-off closed for social distancing. In each open pew we have marked off, with stickers or tape, six feet of spacing as a point of reference. Families/Households sitting together do not need to safe distance.

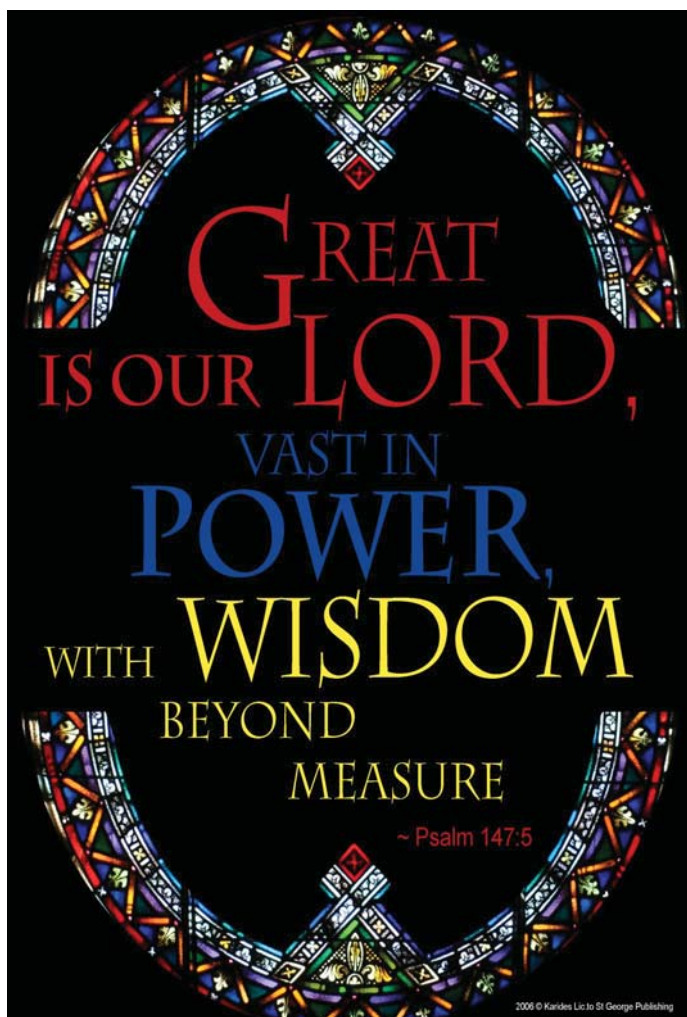
WALK THIS WAY: All aisles are marked with arrows on the floor to allow for safe flow of traffic during Communion.

COMMUNION: Only the Body of Christ will be offered for the foreseeable future. Please practice six feet of social distancing at all times during communion.

SIGN OF PEACE: Please use a non-contact sign of peace with a friendly wave to those around you.

PROCESSIONS: The priest, deacon and ministers will not process via the center aisle before or after Mass.

SANITIZE: While we will have some hand sanitizer pump bottles accessible in both churches, we encourage all to bring their own personal size supply to Mass if possible.



CROSSWORD

(Most answers are in today's readings)

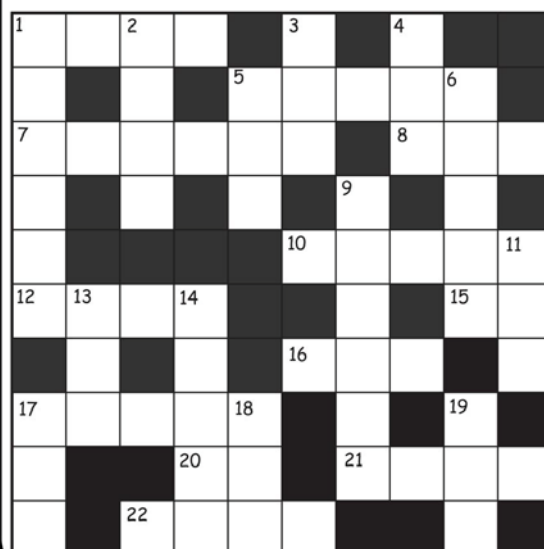
CLUES ACROSS

1. Beginning of the day 5. Tied up 7. End of the day 8. Early morning moisture 10. Peter's other name 12. A collection of dwellings 15. A negative 16. Strange 17. Is pulled along with effort; takes a long time 20. Masculine pronoun 21. Large number 22. A faraway sun

Last week's wordsearch

W	B	P	R	O	P	H	E	T	C	A	E
W	O	M	L	F	D	E	S	T	R	O	Y
G	I	S	H	I	S	H	R	I	E	K	S
J	K	F	E	N	S	O	M	L	I	D	P
R	Q	F	E	S	P	T	E	A	C	H	I
V	O	I	C	E	G	V	E	U	T	S	R
B	W	R	X	B	O	D	Y	N	Z	Y	I
C	U	E	B	A	O	W	O	R	L	D	T
E	D	S	F	K	D	G	O	Q	P	N	J
I	H	L	Y	M	U	N	C	L	E	A	N

CLUES DOWN



1. Barren land 2. Moving air 3. Happens to dead things 4. Finish 5. We sleep on this 6. Wicked angel 9. Good judgment; sensible thinking 11. At this moment 13. Belonging to us 14. Time of darkness 17. Time of light 18. Great body of water 19. Joining word

Online Bulletin Delivery



Parish Bulletin



To your inbox

Sign Up at www.pilotbulletins.net/sign-up

Receive your Parish Bulletin in your inbox every week.

617-779-3770 // www.pilotbulletins.net



Catholic Cruises and Tours

Take your
**FAITH ON A
JOURNEY**



Catholic Cruises and Tours and The Apostleship of The Sea of the United States of America

Mass is included with all of our tours!

Catholic Cruises and Tours to Worldwide Destinations

Holy Land Discovery • Fatima, Lourdes and Shrines of Spain • Grand Catholic Italy • Footsteps of
Apostle Paul • Shrines of Alpine Europe • Pilgrimage to Lourdes • Scottish Highlands
• Camino, A walking journey for the soul



Call us today at 860-399-1785 or email Janet@CatholicCruisesandTours.com
www.CatholicCruisesandTours.com

MULHANE

Home for Funerals

Honoring, Remembering, Celebrating

Owned and operated by the Mulhane Family for over 150 years.

Stuart & Matthew Mulhane
508.865.2560 • www.mulhane.com



**Family Owned
and Operated**

124 Main Street, Millbury, MA

- New Homes • Additions
- Garages • Decks
- General Building Projects

508-865-4822

www.cslumberco.com

CHRISTOPHER'S



ICE CREAM

22 West St. • Millbury, MA
Take a step back in time...

OLD FASHIONED ICE CREAM
MADE ON PREMISES

508-277-8782

Honored Memory Grave Care
Professional Grave Care Providers

Headstone Cleaning
Flower Planting & Delivery

508-939-1338

www.honoredmemorygravecare.com



508-865-2622

116 MAIN STREET
MILLBURY, MA



Lisa Lanzillotti, DMD

Cosmetic Dentistry • Implants • Dentures
Partials • General Family Dentistry
New Patients Welcome
www.millburyfamilydentistry.com

NE NORTHEAST
INSURANCE AGENCY

Home • Auto • Business • Life

Heritage Mall, Auburn, MA

(508) 832-0404

(800) 443-7007



www.neinsure.com



Goretti's
SUPERMARKET

Serving Millbury and
Sutton for over 40 Years
1 Providence Street
Millbury, MA

RAY'S
True Value
HARDWARE

508-865-9037

22 Howe Avenue
Millbury, MA 01527

www.raystruevalue.com

"Be a Servant" Matthew 20:26

ADVERTISING SALES

PART TIME. WORK FROM HOME.

Sell Ads for this Bulletin and more.

Contact us or send your resume to

hr@thebostonpilot.com



**AD SPACE
AVAILABLE**

617-779-3771

DONOR FELL THROUGH!

😊 **PLEASE HELP SAVE A LIFE** 😊

CONTACT: **SAVELICIA@GMAIL.COM**

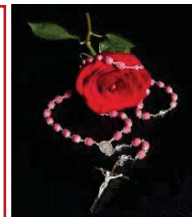
KIDNEY TRANSPLANT DONOR NEEDED!

**BLOOD TYPE "O"
POSITIVE**



508.865.0200

147 Providence St. Millbury, MA



841 Main Street
Tewksbury, MA 01876
(978) 851-9103

Rosaries from Flowers

"Handmade from the Flowers
of your Loved One"

www.rosariesfromflowers.com

Insist on **Exceptional**

POST-ACUTE CARE | RESPITE CARE | MEDICAL SPECIALIZATIONS

ma.care-one.com

508-793-0088

CAREONE
At Millbury

BUY • SELL • MARKET ANALYSIS

MAUREEN ARMY

REALTOR* • Notary Public

508.826.6922

maureenarmy@gmail.com



A local name you can trust!

COLDWELL
BANKER

RESIDENTIAL BROKERAGE