

St. Jude Catholic Church

399 Barrow Street
Pearl, MS 39208
601-939-3181

Office hours: Tuesday—Friday
9:00 a.m.—4:00 p.m.

Fr. Cesar Sanchez, Pastor

FrSanchez@stjudepearl.org

Deacon John McGregor, D.Min.

jmcgregor@stjudepearl.org

Deacon Mark Bowden

mbowden@stjudepearl.org

Cristina Vieyra
Administrative Assistant
Office@stjudepearl.org

Kathleen Edwards
Director of Children Faith Formation
ccd@stjudepearl.org

Laura Bowden
Choir Director
lmbowden11@gmail.com

Lauren Roberts
Director of Jr. High/High School Youth
roberts0677@bellsouth.net
Accounting@stjudepearl.org

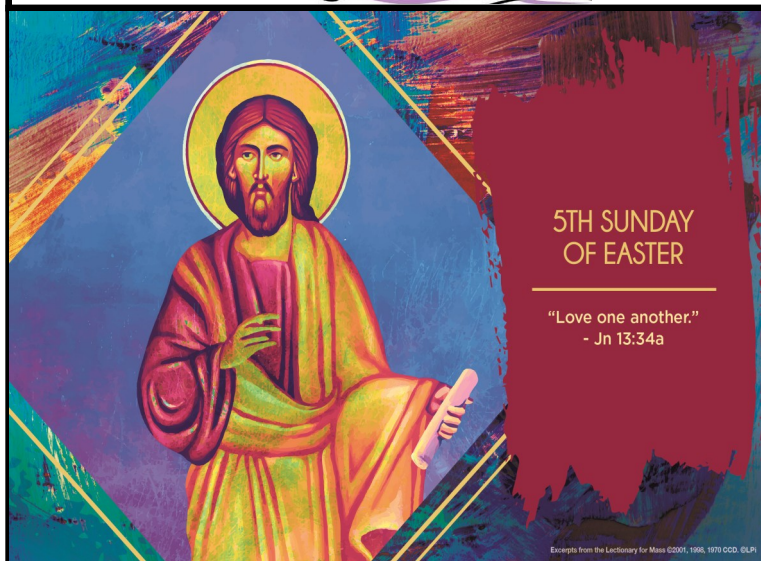
Mary Rose Wolf
Liturgy Director
liturgy@stjudepearl.org

PARISH MISSION STATEMENT

We, the family of St. Jude, Pearl, Mississippi are a vibrant, Eucharistic community with caring members that are empowered by baptism to serve God through the sacraments. We will proclaim the good news and provide spiritual and moral guidance to parishioners and the community by creating a holy and comforting place that encourages active participation, service to each other, and love.

Larry D. Watkins, Barbara Rivere, Margaret Daniel, Dolores Ledet, Mike and Jackie D'Aquila, Kay Smith, Bill Dickson, Ellen Buno, Stutzman Family, Betsy Cocks, Rhonda Boren, Janet Paczak, Ray Andrews Jr., Sandra Latham, Evelyn Solomon, Gwendolynn Santos, Danielle Rivero, Linda Rivero, Kimberly Mancini, Breland Family, Paola Martinez, RC Cox, Mike Eaves, Sandy Hart, Terry Sherwind

*In Our Thoughts
& Prayers*



Weekend Mass Times

Saturday.....5:00 pm

Sunday.....9:30 am

Sunday (Spanish).....12:15pm

INCENSE WILL BE USED EVERY 1ST SUNDAY MASS

Daily Mass Times

Tuesday12:00 pm

Wednesday6:00pm

Thursday (Spanish).....6:30 pm

Friday10:00 am

Holy days may cause time change for daily Masses.

PLEASE CHECK BELOW **

Adoration/Confessions/Healing Mass

- **Adoration** —Wednesday, 5:00—6:00 pm Thursday after 6:30 pm Mass (*about 7:15pm*)
- **24hr Adoration every 1st Friday in prayer chapel.**
- **Confessions**— 7:15pm Thursday during Adoration & Saturday 4:15—4:45 pm or by Appointment
- **Healing Mass** every 2nd Friday of the month.
****Holy Days/Feasts/Celebrations/events****
- **May 25th 2025 Graduation recognitions during Mass**
- **Pentecost Festival June 7th at 5pm** (*vigil Mass will be an hour earlier*)

Mass Intentions

Saturday, 5 pm— Socorro Neri Rivero+
Sunday, 9:30 am—
Sunday, 12:15 pm— Rafael Roversi Key+
Tuesday, 12 pm — St. Jude Parishioners
Wednesday, 6pm—
Thursday, 6:30pm— Special Intentions
Friday, 10 am—

Last week's Collection

\$6,458.00

A cheerful giver does not count the cost of what he gives. His heart is set on pleasing and cheering the one to whom the gift is given.
—St. Julian

You can signup for online Giving <https://giving.parishsoft.com/App/Giving/PS-1649>;

Or text Give to 601-768-1831;

Or mail in your weekly, bi-monthly, or monthly tithe to PO Box 5526, Pearl, MS 39288-5526;

Or drop your tithe at the office using the Drop Box near the door of the Office.

Thank you to all who mailed, dropped by with their offering or signed up for online donations.

St. Jude Flower Guild

The St. Jude Flower Guild, a group of dedicated and talented volunteers who arrange the fresh flowers in the church each week, will be taking special requests and accepting donations after each Mass on the weekend of May 17-18.

Money donated for flowers may be given in memory or honor of loved ones or in celebration of special events such as weddings, anniversaries, birthdays, baptisms, or feast days.

The cost for two arrangements behind the altar and an arrangement in the narthex is \$150. For donations of \$150 or more, an acknowledgement with the donor's name and the event or person being honored will be listed in the weekend bulletin. Donations of smaller amounts will also gratefully be accepted.

Please consider how you can help with using God's creations to help beautify our sacred space!

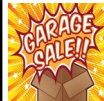
For more information contact Rhonda Bowden at rbowden@stjudepearl.org.

**Graduate recognitions
will be during May 25th Masses.**
Sign up sheets in the back of the church if you would like to participate and receive a special gift.



St. Jude Parish 18th Annual Pentecost International Food Festival

SAVE THE DATE
Saturday June 7th at 5pm
(vigil Mass will be at 4pm)



May 18 starting at 3 PM we need ALL hands on deck to help move garage sale items from the old rectory to the parish hall. The main objective of that day is to get most if not everything moved. Then during the week we can sort it out. I will need volunteers for during the week too.
contact: Lauren Roberts at 601-503-8057. Thank you all for supporting our youth!

Flowers this weekend
donated by
The Orozco Family
in Celebration of:

*Kailani's third
Birthday*



STROKE SCAN PLUS

Vascular & Organ Wellness Ultrasound Screenings

St. Jude Catholic Church

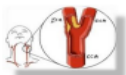
Thursday, May 29th

Please call 832-437-7355 for your appointment.

Do You Have Any of These Risk Factors?

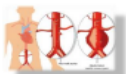
High Blood Pressure • High Cholesterol • Family History of Stroke, Heart Attack, Aortic Aneurysms or Cancer • Diabetes • Atrial Fibrillation • Obesity

The first symptom of a stroke IS a stroke! Early detection helps to save lives. Manage these controllable risk factors: smoking, unhealthy diet, physical inactivity, excessive weight, and alcohol consumption.



Stroke Risk Screening

Ultrasound of the carotid artery looking for plaque or blocked arteries.



Abdominal Aortic Aneurysm Screening

Ultrasound of the abdominal aorta looking for an aneurysm.



Thyroid Screening†

Ultrasound looking for physical lesions such as nodules or cysts.



Liver Screening

Ultrasound looking for physical lesions such as masses or tumors.



Kidneys (2) Screening†

Ultrasound looking for physical lesions such as cysts, masses and stones.



Gallbladder Screening†

Ultrasound looking for physical lesions such as polyps, stones, and sludge.

Total Discounted Package: All 7 Ultrasounds for \$179

Appointments: 832-437-7355; † No substitutions or discounts allowed

Additional Testing Available* (not included in package cost)

- A1c (Diabetes) \$25
- Lipids/Cholesterol \$25
- VTD (Vitamin D) \$45
- PSA (Prostate) \$45
- TSH (Thyroid) \$45
- CRP (Cardiac/Inflammation) \$45
- COR (Cortisol/Adrenal Glands) \$45
- GGT (Liver Enzyme) \$45
- CRE (Kidney Creatinine Serum) \$45
- TTE (Testosterone) \$45
- Bone Density (T-Score) \$25



For blood package pricing, open phone camera, hover over QR code and tap the link.

Screening Preparations

- Wear a two-piece comfortable outfit, no dresses.
- No food or caffeine 4 hours prior to screening.
- If you are diabetic, make sure to eat a light snack.
- No chewing gum before the exams.
- 8 hours fast if having the cholesterol test.
- If you are taking medication, continue to take it.

Saving Lives Since 2001!



*Bloodwork may not be available in all regions.
Results read by a Board-Certified Radiologist and mailed directly to you in 3-4 weeks. Life threatening results expedited. Unless you are symptomatic, typically, your doctor will not order diagnostic versions of these screenings and insurance companies may not pay for them. Please note that there is a 350 lb. weight limit on the medical screening tables. Stroke Scan Plus www.strokescan.com (ENG 120524)

CONGRATULATIONS

To the children that were
BAPTIZED
and received
FIRST HOLY COMUNNION
During the week and weekend



The Young Adults meet
on Sundays at 6:30pm.
Everyone 19-35 are
invited.

**YOUNG
ADULT
MINISTRY**

Sunday Morning Adult Faith Formation

has wrapped up for the year. We will re-sume classes this fall. If you have ideas for programs you would be interested in, please email Cathy Hayden at cathychayden@gmail.com.

If anyone is interested
in being a part of the
Homebound ministries



Communion
for the
Homebound

or knows of anyone in need of their service, please reach out to Danielle Morales.
Cell #: 601-906-1254
E-mail: jemsdani63@outlook.com

St. Jude Catholic Church

GARAGE SALE



**23-24
MAY**

399 Barrow Street Pearl, MS

FRIDAY 6PM-8PM; \$5 ENTRY FEE

SATURDAY 6AM-12:30PM; FREE ENTRY

All proceeds fund our Youth program

Weekly Prayer

Sunday's Readings

First Reading:

And when they arrived, they called the church together and reported what God had done with them and how he had opened the door of faith to the Gentiles. (Acts 14:27)

Psalm:

I will praise your name for ever, my king and my God.
(Ps 145) Or: Alleluia.

Second Reading:

I heard a loud voice from the throne saying,
"Behold, God's dwelling is with the human race.
He will dwell with them and they will be his people
and God himself will always be with them as their God."
(Rv 21:4)

Gospel:

I give you a new commandment: love one another.
As I have loved you, so you also should love one another.
(Jn 13:34)

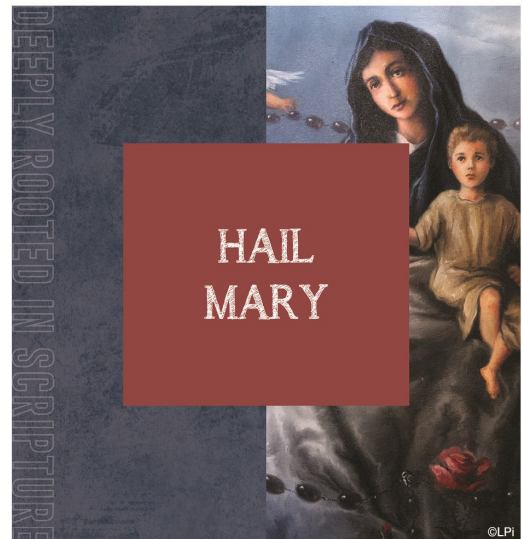
Excerpts from the Lectionary for Mass ©2001, 1998, 1970 CCD.
The English translation of Psalm Responses from Lectionary for Mass © 1969, 1981,
1997, International Commission on English in the Liturgy Corporation. All rights reserved.

Live The Liturgy Inspiration of the Week

There is an invitation in the empty tomb and the abandoned burial cloths. What great things could we accomplish, if we only believe that Christ has conquered death? Go forth this Easter season, boldly embracing the hope of the resurrection.

Observances for the week of May 18, 2025

Sunday: 5th Sunday of Easter
Tuesday: St. Bernardine of Siena, Priest
Wednesday: St. Christopher Magallanes, Priest, and Companions, Martyrs
Thursday: St. Rita of Cascia, Religious
Next Sunday: 6th Sunday of Easter



Devotions, *Explained!*

The words of the Hail Mary — undoubtedly the most recognizable Catholic prayer after the Lord's Prayer — are deeply rooted in scripture, but Catholics did not begin to utilize the Hail Mary prayer in its current form until around the 11th century.

Prayer of Christian Love

Fill our hearts, O Lord, with Your love, the deepest, richest, purest love any of us has ever known. May Your love be our standard for love.
May Your love be what we bring and communicate to the world. May Your love define us as Christians, made in Your image and likeness.
Amen.