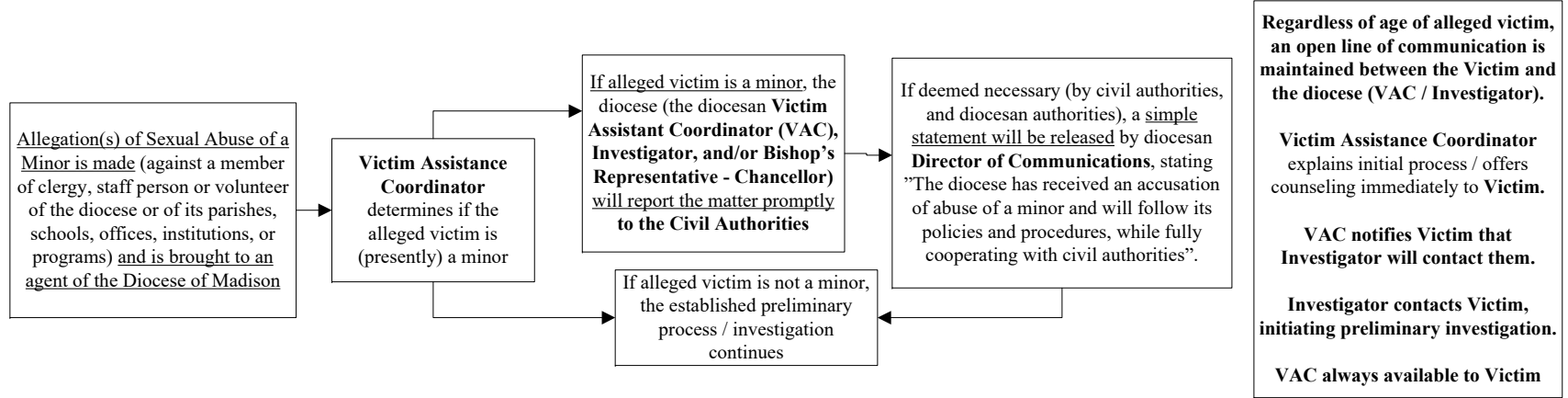


Diocese of Madison

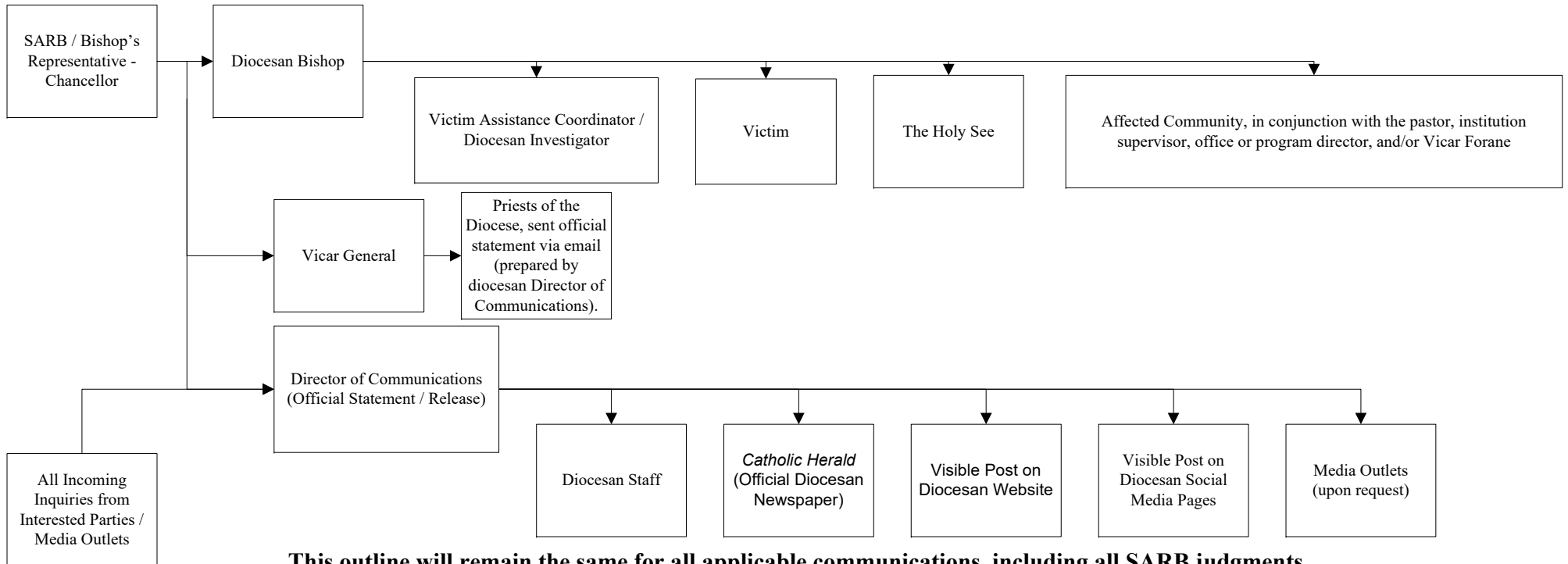
Flowchart of Process and Communications Regarding Allegations of Sexual Abuse of a Minor

Initial Intake of Allegation



The following communications presume the conclusion of the preliminary investigatory process and the judgment (by the diocesan Sexual Abuse Review Board) that the **allegation is credible** and the established process will continue.

Communication that allegation has been deemed credible*



This outline will remain the same for all applicable communications, including all SARB judgments, as well as all penal processes / civil and canonical judgments

*Communication regarding subsequent judgements will vary, if the credibly accused is already publicly listed, and known to the affected community