

# BUILDING SAINT PAUL CATHOLIC CHURCH FOR THE FUTURE

"UNLESS THE LORD BUILDS THE HOUSE, THEY LABOR IN VAIN WHO BUILD". PSALM 127:1



## NEED

When the community of St. Paul Parish established its original master plan for development in the late 1990's, the new church building was seen as the first priority. Yet, the parish recognized that further buildings would be essential to accommodate future needs. A vibrant and growing parish demonstrated that expanded facilities should be a priority.

The original plan for development included a vision for additional support buildings to enhance and foster parish life. The key components of this concept included the social, educational, and administrative goals of good pastoral stewardship.

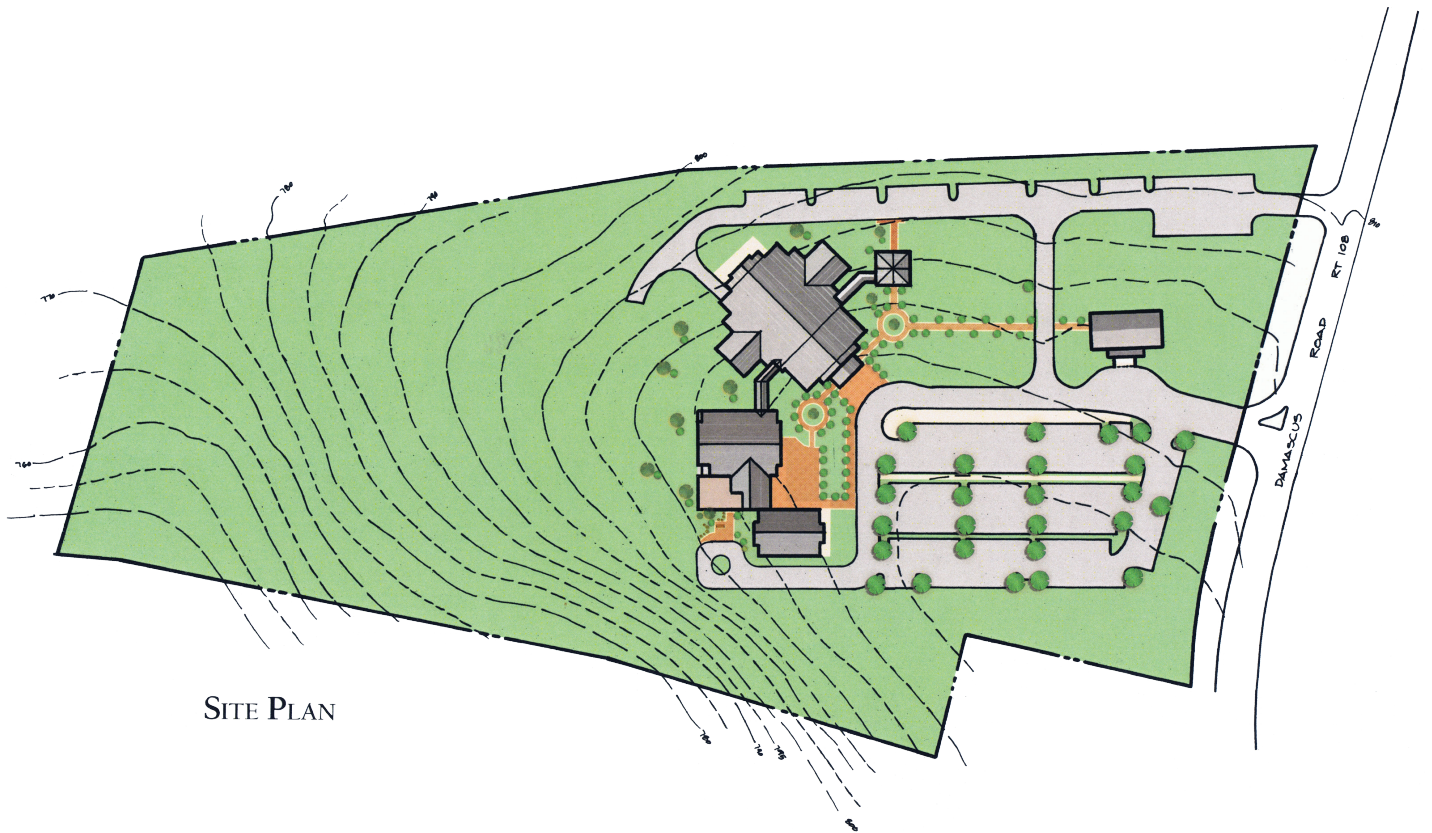
Since the new church was dedicated in 2002, the

needs of the community have not changed. St. Paul continues to grow. As a consistent aim of pastoral planning, the parish pastoral council placed development of our facilities as a continuing goal and a need for the community.

This past year after consultation with the Pastoral Council, the Parish Finance Council, the Building and Grounds Committee, and the Pastoral Staff, our pastor decided to seriously investigate the steps that would enable us to progress with plans to build for the future of the parish.

## APPROVAL

Before any real planning could begin, approval and support of the Archdiocese of Washing-



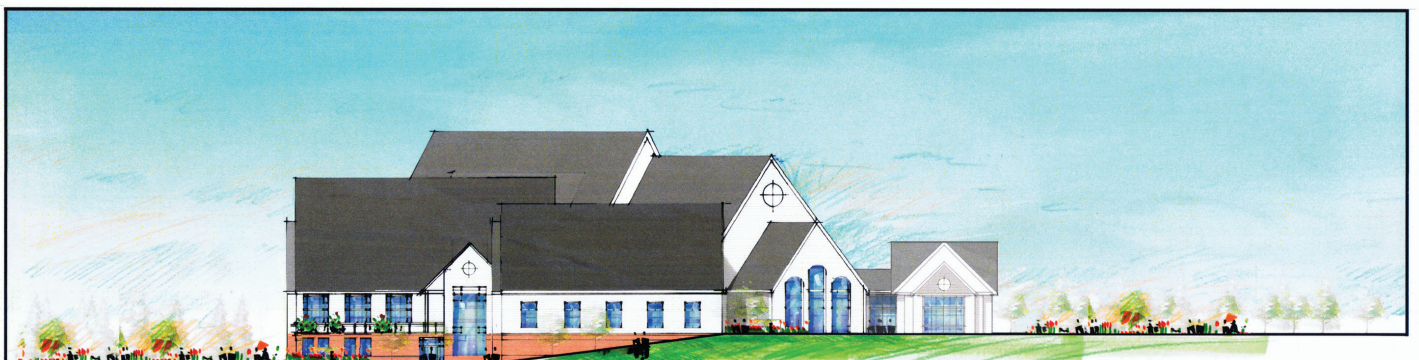
ton was essential. In October we submitted a description of our plans for development and in early November, we received permission to proceed with the initial stages of our building project.

We were given the go-ahead to do two things. We could create a development concept and begin a 3 year capital campaign. During the winter and spring our building committee, working with the architectural firm of Bignell, Watkins & Hasser, created a concept that we believe will truly

enhance and enable St. Paul to meet our parish needs now and into the future.

## PHASING

Because our community is dealing with significant debt, the Archdiocese of Washington will allow us to proceed to the next stage of development only when we have full funding for the scope of the project. At first glance this seems like an impossible task. However, the size of this project becomes manageable through what is





called phased development. This type of improvement is very similar to methods people often employ when they remodel or add to their homes.

After buying a house, families often want to make additions or do significant renovations. Say a family wants to add space to a kitchen, enclose a porch, and add a family room to the existing house. Under most circumstances this type of building project takes time. Doing everything at once is often not possible. What is possible though is to plan and do the development in phases. While continuing to pay their mortgage, many people budget and save money to make additions possible. They also follow a plan that allows them to make changes that will incorporate each new part without sacrificing the total design of the whole building or the planned additions.

Our plan for phased development at St. Paul will use a similar model for making improvements. Like the family that plans on making large-scale renovations to their home, our additions will fit a concept that makes allowance for what we can afford, the layout and accessibility of the additions, as well as the priorities we deem as most important.

## PRIORITIES

Since we are going to build in phases, the needs of the community that reflect our most immediate priorities are those that deal with our educational and social missions.

The ability to have adequate space for our reli-

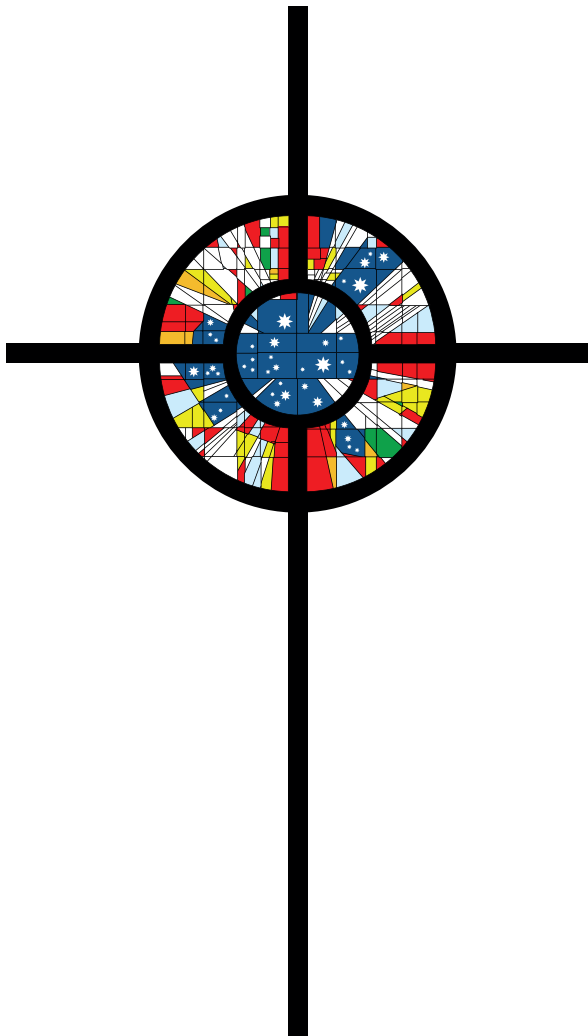
gious education programs is clearly one of our most pressing needs. Our first phase naturally gravitates to meeting this goal along with providing a parish hall. A new hall will accommodate parish social and educational events. It also has the potential for building relationships in the greater Damascus area and to draw revenue through use of the hall and our classrooms for commercial events.

The second priority will be the development of the administrative wing. A good work environment and facility to meet the requirements of both staff and parishioners is the driving force for this phase. Our staff will be able to work and interact with parishioners in close proximity to the actual place of ministry. This will encourage greater participation and interaction in the community

Last but not least among our priorities is a daily



mass chapel and childcare facility. The need here is to create an environment of worship that is more accessible for daily prayer and that also serves to encourage visitors to come regularly to pray in an intimate space. It will also aid us on Sunday for children's Liturgy of the Word and will also be well utilized for small prayer gatherings and other liturgies. Located below the chapel we hope to include a childcare facility. Many churches in our area now offer this service. As a ministry, it will draw young families to our community and create a basis for their life in our parish family.



## DONATIONS

Needs, approvals, phases, and priorities, mean nothing unless we come together to work for something wonderful for our parish. We truly need the support of our entire community to bring this project forward. To do this well, we call upon the entire parish to aid us by contributing to the capital campaign.

As you think about your pledge or gift to the campaign, we do ask that you consider a few do's and don'ts.

### Do's

- *Do be prayerful, ask the Lord to guide your decisions.*
- *Do be open minded and thoughtful.*
- *Do be generous.*

### DON'TS

- *Don't shortchange other obligations.*
- *Don't stop your regular parish contributions.*
- *Don't be afraid.*
- *Remember too that all things are possible with God's help. Often His greatest help comes in ways that we may never expect. Let us all build for the future!*