



Saint Luke the Evangelist

A Roman Catholic Community

Serving the People of Westborough Since 1870



Despite the fact that the artist and even the name of this painting are in dispute among art historians, it vividly captures today's gospel. Here we have the soon to be apostles Simon (Peter) and Andrew on the left and a youthful Christ on the right. The artist captures the exact moment when Christ says, "Come after me, and I will make you fishers of men." The artist expresses this invitation through Christ's pointing hand gestures, leading the way to an entirely new life for these fishermen. Indeed, we can see that they are in the middle of working due to the shiny fresh fish that Peter is still holding in his right hand (we know this is Peter because he wears a yellow mantle symbolic of revealed truth). His left hand seems to beckon Christ to wait a moment in disbelief, and Andrew seems completely perplexed as he points to himself as if he is saying: "Are you actually speaking to me?" The artist's rendering of such a spontaneous scene reminds us that Christ's invitation to us is always there, even in the most unexpected moments.



GATHER HYMNAL
1099
Third Sunday in
Ordinary Time

MASS INTENTIONS

Saturday, January 20

4:00pm **Alyssa Bloom**
by Blaney family
6:00pm **Spanish Mass**

Sunday, January 21

7:30am **Joy Ackerman**
by Nancy Papp & family
9:00am **Harry W. Roberts, Jr.**
by St. Luke's parish family
11:00am **Paul Fallon**
by Maureen & Ian Johnson

Monday, January 22

9:00am **Richard John Horrigan**
by Horrigan family

Tuesday, January 23

9:00am **Delia Walsh**
by Horrigan family

Wednesday, January 24

9:00am **Ellen Swirsky**
by Farmer family

Thursday, January 25

9:00am **Special Intention**
by Horrigan family

Friday, January 26

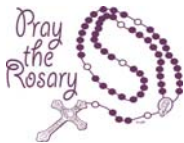
9:00am **Special Intention**
by Horrigan family

Saturday, January 27

4:00pm **Ellen Marie Swirsky**
by St. Luke's parish family
6:00pm **Spanish Mass**

Sunday, January 28

7:30am **John Horrigan**
by Horrigan family
9:00am **Robert McLaughlin**
by family
11:00am **Harry Roberts, Jr.**
by Farmer family



**We invite you to pray
the Rosary everyday after
the 9am weekday Mass
Monday through Friday**

Please Pray for...

Susan Bailey, Chloe Nascimento, Jonathan Tomashefsky,
Brian Howland, Michael LeBlanc, Mary Mahan, Becky Rawson
Bev Longime, James Wright, Evelyn Croteau, Lynn St. Jean
Annabelle Duvane, Shirley DePalma, Agnes Limberger, Zachary Collins,
Kupaa Keiley, Tiffany Kelley, Margie Morcone, Sharon Beaulieu,
Nick Johnson, William Fargelli, Stephen & Kimberly Bankcroft, Toby Claufon,
Joe Smith, Dawn Haight, Carol Aloisi, Teresa Putnam, Carmelia Potenti,
Charles Arkle, Leanne McCann, Ellie Carlson, Jane Burke, Hayleigh Scott,
Kellan Keough, Dorothy Clinton, Sr. Pamela Philbin, Karen Mooney,
Sarah McMenemy, Kristine Ann Jackson, Helen Galica, Erik Olsen, Vicki Foley,
Brendon Crowley, Richard Kane, Grace Roche, Jack Curtin, Jim Bennett,
John Lynch, Kathleen Farrar, Kirolos Gergis, Gregg Merloni, Tome Valadao,
Gene Buffo, Christine, Patrick, Robert & Coutinho family
Maryann Bisco, Susan Garry, Melvin Boucher, T.J. Bautz, Joan Fallon,
Edward Hubbell, Nancy Camp, David Perry, John Durnan, Linda Darby,
Annie Mason, Nancy Santory, Laconya Mobley, Maria Matejko,
Gary Wilson, Jr., Debbie Giroux, Kevin & Donna Brennan, Luz Chavez,
Carlene Beck, Joel Rivera, Mary Payant, James Thomas, Christina Narensky,
Ann Martin, Michael Berthuime, Trisha Suzi, Norman Beland,
Sofia Shahin, Sarah Cox, Hailie McLatchey, Barbara Auger, Barbara Barnes,
George Cabana, Beverly Taylor, Jeanne Amendola, Jack Walker, Daniel Baker
Rebecca Coax, Robert Trant, Michael McAndless, Michael Del Pozzo,
Joan Sanders, David Sawyer, Madison Knopf, Claire Kennedy, Susanne Ollman,
Frank Sannelli, Pat & John Lusek, Michael Zancewicz, Kristy Cautello,
Judy Melfa, Neil Kenny, Joseph Malzone, Lois Kerbel, Michael Turpin,
Elise Ollman-Kahle, Patricia Amorelli, Connor Blaney, Debbie Krikler,
Demetrius Mobley, Gary Shults, Erin Magrane, George Beecher

**Let us remember to pray for all the men and women who are
over seas in harm's way.**

We remember those who have died
Anthony Putnam

**EXPOSITION OF THE
BLESSED SACRAMENT & ADORATION
TUESDAY 9:30AM TO 6:00PM
Divine Mercy Chaplet 3:00pm
Prayers For Sanctity of Life 5:00pm
BENEDICTION AT 6:00PM**



Cover Image: Caravaggio, *The Calling of Saints Peter and Andrew*, 1610.

Source: By Caravaggio - Royal Collection, Public Domain, <https://commons.wikimedia.org/w/index.php?curid=92096603> Text: © Christian A. Hedrick



MOVIE TIME

January 22, 2024

9:45-11:30 a.m.

Come join us to see *Miracles from Heaven*, a true story of the Beam Family. When Christy discovers her 10-year old daughter, Anna, has a rare, incurable disease, she becomes a ferocious advocate for her daughter's healing.

Gathering – Refreshments
Short Business Meeting ~ Program of the Month
4th Monday of the Month
9:45 – 11:30 a.m.



Begin to break open God's Word in your home by dedicating some family time each week for a brief reading of a Scripture passage, perhaps the Sunday Gospel. Given the hectic and stressed pace of life and our typically overworked schedules, making family time for the Bible reminds us of the need to put God - rst. Gathering around the table of God's Word enriches and strengthens the experience of family as a "domestic Church."

Choose a comfortable and quiet place in the home, away from the distractions of television and ringing telephones. Read the passage aloud, and then allow some time for the family to reflect on and share its meaning together. Since Sacred Scripture is the "speech of God as it is put down in writing under the breath of the Holy Spirit" (CCC, no. 81, quoting Second Vatican Council, *Dei Verbum*, no. 9), this time dedicated to reading puts your family into living communication with God. Remind everyone gathered that this family activity brings them to a living encounter with Christ, who is present as the Word among them.

Excerpt from the United States Conference of Catholic Bishops "Sharing the Word of God at Home" © 2009 USCCB, Washington, DC.



PARISH TELEPHONES

Please note: St. Luke Parish is transitioning to a new phone system. There may be intermittent outages on the Parish Center or Parish Secretary phone lines. The voice message system may be unavailable. We are aware of the issues and are working to resolve this as soon as possible.

If you can't get through, please try again, or email the office: office@stlukes-parish.org

We apologize for any inconvenience. Thank you for your patience and understanding!

SAINT LUKE THE EVANGELIST CHURCH



CHRISTMAS PAGEANT ON CHRISTMAS EVE AT THE 6:00PM MASS.



The Confirmation Retreat was held on January 6th. The students listened to Sam Todzia from Red Barn Ministries discuss his personal journey of faith. They also learned about God existing, who they are, and their purpose in life.

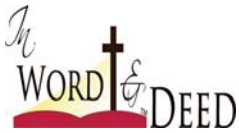
THANK YOU FOR YOUR SUPPORT

Sunday Ordinary Collection Monthly

Month of October 2023	64,025
Month of November 2023	62,928
Month of December 2023	73,823

SAFE ENVIRONMENT

Here at St. Luke's, we follow the guidelines of the national charter for the Protection of Children and Young People approved by the US Bishops and the policies of the Worcester Diocese in screening those who work with children in our care and in helping victims of abuse find healing. For questions, information or help please contact Judy Audette, Victim Assistance Coordinator for the Diocese of Worcester at 508-929-4361 (direct line and confidential voicemail is available).



Our parish retreats are a time of change. Even years later, people will often remember it as a time of new discoveries and seeing faith in action for the first time. When the weekend is over, life is never quite the same again. The experience of a renewed faith brings a new light and a new hope to our life.

Jesus brings a new message of love to the whole world, a message of God's providence, peace and forgiveness. That message is renewed each day when we pray, when we serve, when we acknowledge the importance of faith and act on our desire to love. Some will hear it, others will ignore it, and some will doubt it. But the message persists, offering hope and grace to everyone.

God calls us in His own time, perhaps at a moment we are least expecting it. He never takes it back. We are always able to respond, to begin again, and to renew our willingness to accept and share the message of love and life, of goodness and grace. Accept the call. Life will never be the same.

James Gaffney



Third Sunday in Ordinary Time
"Follow me and I will make you fishers of men." (Mark 1:17) Jesus' call to "follow me" is a call to all Christians! The call is in the here and now, in our present circumstances, not when we think we are "ready" or have everything in order. Good stewardship of our God-given gifts means that things aren't always going to go according to our schedule, but that God has a much better plan in store for each of us.

SCRIPTURE READINGS 2024 YEAR B	
SUNDAY Jan 21	Jan 3:1-5, 10/Ps 25:4-5, 6-7, 8-9/1 Cor 7:29-31/ Mk 1:14-20
MONDAY Jan 22	2 Sm 5:1-7, 10/Ps 89:20, 21-22, 25-26/Mk 3:22-30
TUESDAY Jan 23	2 Sm 6:12b-15, 17-19/Ps 24:7, 8, 9, 10/Mk 3:31-35
WEDNESDAY Jan 24	2 Sm 7:4-17/Ps 89:4-5, 27-28, 29-30/Mk 4:1-20
THURSDAY Jan 25	Acts 22:3-16 or Acts 9:1-22/Ps 117:1bc, 2/ Mk 16:15-18
FRIDAY Jan 26	2 Tm 1:1-8 or Ti 1:1-5/Ps 117:1bc, 2/Mk 4:26-34
SATURDAY Jan 27	2 Sm 12:1-7a, 10-17/Ps 117:1bc, 2/Mk 4:35-41
SUNDAY Jan 28	Dt 18:15-20/Ps 117:1bc, 2/1 Cor 7:32-35/Mk 1:21-28

WORCESTER MEN'S CONFERENCE

Men (of all ages, including teens and college students) are invited to this conference at Worcester's DCU Center on Saturday, March 16, 2024. Adult tickets are \$50 until March 4, 2024; afterwards \$60.

Student tickets are always \$30. Tickets will not be available at the door this year because of advance planning for the luncheon. Visit the conference website for information and to purchase tickets online www.catholicmenworc.com

Hear dynamic talks from Catholic leaders:

- Deacon Harold Burke-Sivers,
- James Wahlberg,
- Michael Nicholson,
- Msgr. Thomas Sullivan.

Adoration available all day.

Closing Mass with Bishop Robert J. McManus at 4:00 pm. For questions and additional information contact cathmenworc@gmail.com



FREE HOME PICK-UP!

The Society of St. Vincent de Paul of Worcester and Hampden Counties is now offering free curbside pick-up of clothing, shoes, books, and household items. The funds received go to help our neighbors in need with (but not limited to) food, clothing, rent, and utilities.

To schedule a free home pick-up, visit our website at <https://svdpworcester.org> and click on the "How You Can Help" tab, then choose "Schedule a Home Pick-Up." Complete the form, and you're done! You may also contact our partner (CMRK) at 508-474-8966 or scan the QR code below which will direct you to our website.

Please Help us help our neighbors in need!

Thank you!



**ST. LUKE THE EVANGELIST CHURCH
 IS OPEN 24 HOURS A DAY, 7 DAYS A WEEK,
 WE CAN MAKE A VISIT ANYTIME WE PASS.
 JESUS WILL BE AS HAPPY TO SEE US
 AS WE ARE TO SEE HIM.**

SAINT LUKE THE EVANGELIST CHURCH



ST. LUKE THE EVANGELIST CHURCH
70 West Main Street, Westborough

PARISH CENTER OFFICES
1 Ruggles Street, Westborough, MA 01581
Office 508-366-5502
Faith Formation & Outreach 508-366-8509
www.stlukes-parish.org

PARISH STAFF:

Fr. Diego Buritica, Pastor

Contact: 508-366-5502 (Office)

email: frdiego@stlukes-parish.org

Fr. Sagar Gundiga, Associate Pastor

Contact: 508-366-5502

Email: frsagar@stlukes-parish.org

Craig Stine, Director of Music

email: music@stlukes-parish.org

Denise Pelkey, Youth Minister

e-mail youthministry@stlukes-parish.org

Melissa Baril Lower, Faith Formation

email: religiouseducation@stlukes-parish.org

Nan Ford, Parish Outreach

e-mail outreach@stlukes-parish.org

Julie Basque, Pastoral Associate

e-mail pastoralassociate@stlukes-parish.org

Maria Gasser, Parish Secretary

e-mail office@stlukes-parish.org

Pam Vaccari, Parish Ctr. Secretary

e-mail religiousoffice@stlukes-parish.org

Linda Underwood, Finance Manager

e-mail financeoffice@stlukes-parish.org

Lawrence Orlando, Building and Grounds

Patrick Malone, Building and Grounds

ST. LUKE'S PASTORAL COUNCIL

EMAIL: pastoralcouncil@stlukes-parish.org

Ellen Gualtieri, Chair

Kathleen Gorczyca, Vice Chair

Colin Murphy, Secretary

Michael Alden

Christian Hedrick

Deborah Foody

John Griffin

Bill Kenney

Tom Kieler

Brian McLaughlin

Irma Torres

Deborah Ziegler

Mass Schedule

Saturday: 4PM, in Spanish 6PM

Sunday: 7:30AM, 9:00AM, 11:00AM

Weekday Masses

Monday through Friday,

9:00 AM

**NEW TO THE PARISH
WELCOME**

SACRAMENT OF BAPTISM

*Please call Maria at 508-366-5502
for information*

SACRAMENT OF RECONCILIATION

*Saturday from 3:00 to 3:45PM ~ also by personal
request. Reconciliation Room is handicapped
accessible*

SACRAMENT OF MARRIAGE

*Please contact a Priest at least six months
in advance*

RCIA

*Contact the parish secretary if interested
in becoming Christian in the Catholic faith
tradition.*

VISITATION OF THE SICK

*Our extraordinary ministers are always pleased
to bring the Eucharist to parishioners who are
unable to join us for weekly worship. If you or a
family member would like to receive Communion,
please call Julie at 508-366-8509. If you
know of someone from the parish who is in the
hospital, please let us know.*



BECOME DEBT FREE IN AS LITTLE AS 24-48 MONTHS

If you owe more than \$10,000 in credit card or other unsecured debt, see how National Debt Relief can help resolve your debt for a fraction of what you owe.

Call today:

+1 (866) 605-1934



A Help Button Should Go Where You Go!



To be truly independent, your personal emergency device needs to work on the go.

MobileHelp® allows you to summon emergency help 24 hours a day, 7 days a week by simply pressing your personal help button. Unlike traditional systems that only work inside your home, a MobileHelp medical alert system extends help beyond the home. Now you can participate in all your favorite activities such as gardening, taking walks, shopping and traveling all with the peace of mind of having a personal alert system with you. MobileHelp, the "on-the-go" help button, is powered by one of the nation's largest cellular networks, so there's virtually no limit to your help button's range.

No landline? No problem! While traditional alert systems require a landline, with the MobileHelp system, a landline is not necessary. Whether you are home or away from home, a simple press of your help button activates your system, providing the central station with your information and location. Our trained emergency operators will know who you are and where you are located. If you're one of the millions of people that have waited for an alert service because it didn't fit your lifestyle, or settled for a traditional system even though it only worked in the home, then we welcome you to try MobileHelp. Experience peace of mind in the home or on the go.

GET OUR SPECIAL OFFER NOW:

- ✓ **FREE** EXPEDITED SHIPPING*
- ✓ **FREE** ONE MONTH SERVICE*
- ✓ **50% OFF** AUTO FALL DETECT*
- ✓ **plus FREE** EQUIPMENT TO USE!



Unlike "stay-at-home" emergency systems MobileHelp protects you:		
Places where your Help Button will work	MobileHelp	Traditional Help Buttons
At Home	✓	✓
On a Walk	✓	✗
On Vacation	✓	✗
At the Park	✓	✗
Shopping	✓	✗

MobileHelp Features:

- Simple one-button operation
- Affordable service
- Amplified 2-way voice communication
- 24/7 access to U.S. based emergency operators
- GPS location detection
- Available Nationwide

MobileHelp

1-855-444-3698



OUR BEST OFFER EVER!
From \$19.95* /month



*For a limited time - promotions available for select systems and subscription plans, please call for specific details. Offers are valid for new customers and for the first year of service and cannot be combined with any other offers. \$19.95 is the monthly subscription price for a MobileHelp Classic (at home only) system. There is a one-time \$49.95 processing fee to subscribe to this plan. Equipment shown is the MobileHelp D20 (at home and on the go) system available at a higher monthly cost. Most equipment is included at no cost while actively subscribing and must be returned upon cancellation. Free one month of service offer valid with purchase of Annual plan and includes month 13 at no additional charge. Refer to terms and conditions for specific details. Depending on the promotion chosen, you may receive an additional savings of \$5.50 off the \$11 retail price of Fall Detection service. After first year, Fall Detect pricing reverts to discounted price of \$8.25/month when combined with MobileHelp Connect Premium. Fall Detection does not detect 100% of falls. If able, users should push their help button when they need assistance. Fall detection is not intended to replace a caregiver. MobileHelp is a registered trademark, patented technology. Current GPS location may not always be available in every situation on the cellular network at all times. Expedited shipping offer is for Annual plans made prior to 3 PM EST Mon-Fri. Expedited shipping is standard 2-day - no deliveries on Saturdays/Sundays or to Hawaii or Alaska. Shipping delays may occur due to situations beyond our control.

LeafFilter
GUTTER PROTECTION

CLOG-FREE GUTTERS FOREVER



EXCLUSIVE LIMITED TIME OFFER!

15% OFF + **10% OFF** + **0%**
YOUR ENTIRE PURCHASE SENIORS & MILITARY! APR FOR 24 MONTHS**



Promo Code: 285

FREE GUTTER ALIGNMENT + FREE GUTTER CLEANING*



CALL US TODAY FOR A FREE ESTIMATE

1-877-319-0949

Mon-Thurs: 8am-11pm, Fri-Sat: 8am-5pm, Sun: 2pm-8pm EST

A COMPANY OF LEAFHOME

**Wells Fargo Home Projects credit card is issued by Wells Fargo Bank, N.A., an Equal Housing Lender. Special terms for 24 mo. apply to qualifying purchases of \$1,000 or more with approved credit. Minimum monthly payments will not pay off balance before end of promotional period. APR for new purchases is 28.99%. Effective - 01/01/2023 - subject to change. Call 1-800-431-5921 for complete details. The leading consumer reporting agency conducted a 16 month outdoor test of gutter guards in 2010 and recognized LeafFilter as the "#1 rated professionally installed gutter guard system in America." *For those who qualify. One coupon per household. No obligation estimate valid for 1 year. Offer valid at time of estimate only. See Representative for full warranty details. Manufactured in Plainville, Michigan and processed at LMT/Mercer Group in Ohio. AR #036692032, CA #1035795, CT #WHC0649905, FL #CBC056678, IA #C127230, ID #RCE51604, LA #559544, MA #175447, MD #WHIC148329, MI #2102212986, #262000022, #262000043, #2106212946, MN #R731804, MT #226192, ND 47304, NE #50145-22, NJ #13VH09953900, NM #408693, NV #0086990, NY #H-19114, H-52229, OR #218294, PA #PA069383, RI #GC-41354, TN #7656, UT #10783658-5501, VA #2705169445, WA #LEAFPNW822J2, WV #WV056912.

Make the smart and ONLY CHOICE when tackling your roof!



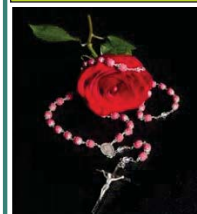
ERIE Metal Roofs **FREE ESTIMATE** **1.855.720.0765**
Expires 3/31/2024

New orders only. Does not include material costs. Cannot be combined with any other offer. Minimum purchase required. Other restrictions may apply. This is an advertisement placed on behalf of Erie Construction Mid-West, Inc. ("Erie"). Offer terms and conditions may apply and the offer may not be available in your area. If you call the number provided, you consent to being contacted by telephone, SMS text message, email, pre-recorded messages by Erie or its affiliates and service providers using automated technologies notwithstanding if you are on a DO NOT CALL list or register. Please review our Privacy Policy and Terms of Use on homeservicescompliance.com. All rights reserved. License numbers available at eriemetalroofs.com/erie-licenses/. MA License Number: CSEA-106394



MADE IN THE U.S.A.

"God is Love" - 1 John 4:8



841 Main Street
Tewksbury, MA 01876
(978) 851-9103

Rosaries from Flowers

"Handmade from the Flowers of your Loved One"

www.rosariesfromflowers.com

Pickering & Son

FUNERAL HOMES

Westborough Funeral Home
62 West Main Street • Westborough, MA
508-366-4458
www.westboroughfuneralhome.com

Upton Funeral Home
45 Main Street • Upton, MA
508-529-6992
www.uptonfunerals.com

David A. Pickering & Andrew D. Pickering, *Directors*

ART & FRAME
Emporium
Your design, print, frame &
art supply specialists... since 1982
508-366-5650
www.artandframeemporium.com

ATTY CAROLYN R. SPRING
Estate Planning and Elder Law
Westborough • 508-898-1835
www.cspringlaw.com
Mention this ad for 10% off services

Curry
Imagine • Print • Communicate
The Gardner Family
800-540-4993
www.CurryPrinting.com

www.EWTN.com
TV, Radio, Newspaper
www.GodANDCountryNOW.com
Vic@VicMelfa.org

ABC Medical
Psychiatric Services for Children & Adults
833-394-7998 / www.abcmmedical.com

Memorial Ads
Available
617-779-3771

The Christensen Team
RE/MAX Executive Realty



Preben & Mary
Christensen
508-868-5483



508-366-5475

Honesty, Integrity, Results!
Your local Real Estate Experts



Joanne
Fontaine
508-479-9691

The Bath or Shower You've Always Wanted
IN AS LITTLE AS A DAY



\$1000 OFF*

AND

**No Payments & No Interest
For 18 Months****

OFFER EXPIRES 3/31/2024

BCI BATH & SHOWER

CALL NOW (844) 300-2419

*Includes product and labor; bathtub, shower or walk-in tub and wall surround. This promotion cannot be combined with any other offer. Other restrictions may apply. This offer expires 3/31/24. Each dealership is independently owned and operated. **Third party financing is available for those customers who qualify. See your dealer for details. ©2024 BCI Acrylic, Inc.

Get started with
3 months free*



WeightWatchers
weightwatchersoffer.com/53

*With select plan purchase. Restrictions apply.

Designer JEWELERS

Designer Jewelers
18 Lyman Street
Westborough
Open Mon. - Sat.

Fine Jewelry • Watches
Jewelry Repair • Gifts for All Occasions
508-366-5512 • www.thedesignerjewelers.com

PAUL CASELLO
Quick Response to all Calls
ELECTRICAL SERVICES LLC
978-870-2111
SAME DAILY PRICE
7 DAYS A WEEK
Weekend And Evening Appointments Available
150 Milk Street, Westborough, MA 01581 • MA LIC #21083-A

Connect Anywhere, Anytime.
Enjoy Free Internet Data on Your Mobile Devices with the Affordable Connectivity Program. You qualify if you receive:

- Medicaid
- SNAP
- SSI
- WIC
- Veterans Pension
- Survivors or Lifeline Benefits
- Tribal Assistance Program
- Housing Assistance

maxsip TELECOM
Get a subsidized 4G Android Tablet for \$20
CALL TODAY (888) 490-8957

AD SPACE AVAILABLE
617-779-3771



Where You'll Find
Knowledge, Quality, & Value
Free Delivery
508-881-2660

134 Front St. Ashland
www.ashlandlumber.com

PERPETUAL ADORATION
24 Hours a Day 7 Days a Week



BETANIA II
Catholic Evangelization Center
154 Summer St - Medway MA
Come join us or sign up today
508.633.4894 - adorationpro.org/betania2

