



Saint Luke the Evangelist

A Roman Catholic Community

Serving the People of Westborough Since 1870

FIRST SUNDAY OF LENT

The Spirit drove Jesus out into the desert, and he remained in the desert for forty days, tempted by Satan. Mk 1:12-13



Today's painting captures the intense scene described in today's gospel and is poignantly appropriate for the first Sunday of Lent. Mark's explanation of Christ's ordeal in the desert is one sentence, which the Russian painter Ivan Kramskoi movingly captures with the quiet stillness of the environment in which Christ sits to pray. The artist depicts the human person of Jesus near the limit of physical deprivation, which we can read in Christ's distressed face. The coolness of dawn is suggested by the colors (grays, blues, and pinks) used for the sky, as well as Christ's cloak and huddled position. The harshness and inhospitable landscape of the desert setting that Christ has intentionally made his temporary home is emphasized by the complete lack of any living vegetation and sharp dryness of the rocks depicted in the foreground. The look on Christ's face entreats our empathy and suggests that we are seeing Christ toward the end of this trying period; while our journey through Lent is just beginning.

**GATHER HYMNAL 1017
FIRST SUNDAY OF LENT**

MASS INTENTIONS

Saturday, February 17

4:00pm **James & Elizabeth Power**
by their family

6:00pm **Spanish Mass**

Sunday, February 18

7:30am **Anthony Papp**
by Nancy Papp & Papp family

9:00am **Tocci family**
by McKenna family

11:00am **Ella Horrigan O'Meara**
by Horrigan family

Monday, February 19

9:00am **Special Intention**
by Horrigan family

Tuesday, February 20

9:00am **Steve Nikopoulos**
by Croll family

Wednesday, February 21

9:00am **Dennis Kay** (Birthday Intentions)
by Helen & Dennis Kay

Thursday, February 22

9:00am **James Gagen**
by Faherty family

Friday, February 23

9:00am **Rose Montanelli**
by Karen & Marty Greigal

Saturday, February 24

4:00pm **Bertha Rahmig**
by Nancy Papp & family

6:00pm **Spanish Mass**

Sunday, February 25

7:30am **Mary "Peggy" Gleason**
by Mongeau family

9:00am **Annette LaNode**
by McKenna family

11:00am **Yagappan**
by Jeyakumar family



**We invite you to pray
the Rosary everyday after
the 9am weekday Mass
Monday through Friday**

Please Pray for...

Nicole Bates, Susan Bailey, Jonathan Tomashefsky,
Brian Howland, Michael LeBlanc, Mary Mahan, Becky Rawson
Katie Hedrick, Bev Longime, James Wright, Evelyn Croteau
Annabelle Duvane, Shirley DePalma, Agnes Limberger, Zachary Collins,
Kupaa Keiley, Tiffany Kelley, Margie Morcone, Sharon Beaulieu,
Nick Johnson, William Fargelli, Stephen & Kimberly Bankcroft, Toby Claufon,
Joe Smith, Dawn Haight, Carol Aloisi, Teresa Putnam, Carmelia Potenti,
Charles Arkle, Leanne McCann, Ellie Carlson, Jane Burke, Hayleigh Scott,
Kellan Keough, Dorothy Clinton, Sr. Pamela Philbin, Karen Mooney,
Sarah McMenemy, Kristine Ann Jackson, Helen Galica, Erik Olsen, Vicki Foley,
Brendon Crowley, Richard Kane, Grace Roche, Jack Curtin, Jim Bennett,
John Lynch, Kathleen Farrar, Kirolos Gergis, Gregg Merloni, Tome Valadao,
Lynn St. Jean, Gene Buffo, Christine, Patrick, Robert & Coutinho family
Maryann Bisco, Susan Garry, Melvin Boucher, T.J. Bautz, Joan Fallon,
Edward Hubbell, Nancy Camp, David Perry, John Durnan, Linda Darby,
Annie Mason, Nancy Santory, Laconya Mobley, Maria Matejko,
Gary Wilson, Jr., Debbie Giroux, Kevin & Donna Brennan, Luz Chavez,
Carlene Beck, Joel Rivera, Mary Payant, James Thomas, Christina Narensky,
Chloe Nascimento, Ann Martin, Michael Berthuime, Trisha Suzi, Norman Beland,
Sofia Shahin, Sarah Cox, Hailie McLatchey, Barbara Auger,
George Cabana, Beverly Taylor, Jeanne Amendola, Jack Walker, Daniel Baker
Rebecca Coax, Robert Trant, Michael McAndless, Michael Del Pozzo,
Joan Sanders, David Sawyer, Madison Knopf, Claire Kennedy, Susanne Ollman,
Frank Sannelli, Pat & John Lusek, Michael Zancewicz, Kristy Cautello,
Judy Melfa, Neil Kenny, Joseph Malzone, Lois Kerbel, Michael Turpin,
Elise Ollman-Kahle, Patricia Amorelli, Connor Blaney, Debbie Krikler,
Demetrius Mobley, Gary Shults, Erin Magrane, George Beecher

**Let us remember to pray for all the men and women who are
over seas in harm's way.**

We remember those who have died
Fr. Walter Riley, Ellie Lambert

**EXPOSITION OF THE
BLESSED SACRAMENT & ADORATION
TUESDAY 9:30AM TO 6:00PM
Divine Mercy Chaplet 3:00pm
Prayers For Sanctity of Life 5:00pm
BENEDICTION AT 6:00PM**

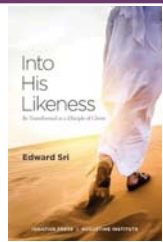
SCRIPTURE READINGS 2024 YEAR B

SUNDAY Feb 18	Gn 9:8-15/Ps 25:4-5, 6-7, 8-9/1 Pt 3:18-22/ Mk 1:12-15
MONDAY Feb 19	Lv 19:1-2, 11-18/Ps 19:8, 9, 10, 15/Mt 25:31-46
TUESDAY Feb 20	Is 55:10-11/Ps 34:4-5, 6-7, 16-17, 18-19/Mt 6:7-15
WEDNESDAY Feb 21	Jon 3:1-10/Ps 51:3-4, 12-13, 18-19/Lk 11:29-32
THURSDAY Feb 22	1 Pt 5:1-4/Ps 23:1-3a, 4, 5, 6/Mt 16:13-19
FRIDAY Feb 23	Ez 18:21-28/Ps 130:1-2, 3-4, 5-7a, 7bc-8/Mt 5:20-26
SATURDAY Feb 24	Dt 26:16-19/Ps 119:1-2, 4-5, 7-8/Mt 5:43-48
SUNDAY Feb 25	Gn 22:1-2, 9a, 10-13, 15-18/Ps 116:10, 15, 16-17, 18-19/Rom 8:31b-34/Mk 9:2-10

Pilot Bulletins

Cover Image: Ivan Kramskoi, *Christ in the Desert*, 1872.

By Ivan Kramskoi - Google Cultural Center, Public Domain, <https://commons.wikimedia.org/w/index.php?curid=38344996> Text © Christian A. Hedrick



JOIN OUR CHURCHWIDE JOURNEY!

Reflect on what it means to be a disciple of Christ from
INTO HIS LIKENESS
by Edward Sri

Short weekly readings and thoughtful reflection questions
Join a small discussion group
with day and evening times available throughout the week



GO to <https://stlukes-parish.org/adult>

FOR DETAILS AND TO REGISTER FOR A SMALL GROUP

THE FOREVER YOUNG

(St. Luke's Senior Adults)
Welcome Seniors!



February 26, 2024

Come join us for Mass, 9am in the Church, followed by a Lenten Spiritual Reflection, 9:45am in the Parish Center, with guest speaker, Sue Landry, and enjoy some delicious homemade soup and dessert.

Gathering – Refreshments
Short Business Meeting
4th Monday of the Month
9:45 – 11:30 a.m.



SACRAMENT OF RECONCILIATION

The Sacrament of Reconciliation is celebrated every Saturday, 3:00-3:45pm and by personal request. The Reconciliation room is handicapped accessible.

During Lent, we will have additional opportunities to celebrate the Sacrament of Reconciliation.

Tuesday evenings: 5:00-6:00 pm

(Prior to Benediction)

**Friday, March 1st and Friday, March 22nd
from 5:00-6:00pm**

(Prior to Soup and Stations in the Church)



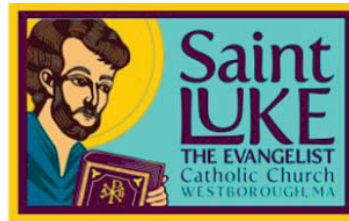
MUSTARD SEED SOUP KITCHEN

St. Luke's is serving at the Mustard Seed on Friday, March 8th. We will be serving chicken, rice pilaf, vegetables, fruit and dessert. Please see the signup sheet in Flocknotes for details. **We are changing the drop off location to the parish center parking lot. Please deliver the food hot to the parking lot between 3 and 3:30 on March 8th.**

Any questions, please call or email Sue Black at 508-212-2748,

susanmblack08@gmail.com.

Thank you so much!



STATIONS & SOUP

JOIN US!

**Friday, March 1st
6pm**

**Stations of the Cross - in Church
followed by Simple Lenten Meal
in Parish Hall**

**St. Luke's Welcome Ministry
Questions? 4farmers@verizon.net**

**** Bring a non-perishable item for
Food Pantry ****



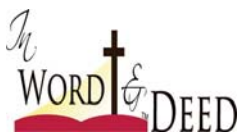
**THE CATHOLIC FREE PRESS
Catholic communications
keeping us connected**

Subscribe or renew home
delivery by using your parish envelope.

Please call Maria at 508-366-5502 for more information or if you would like to subscribe but you do not have a parish envelope.

FEBRUARY IS CATHOLIC PRESS MONTH

**ST. LUKE THE EVANGELIST CHURCH
IS OPEN 24 HOURS A DAY, 7 DAYS A WEEK,
WE CAN MAKE A VISIT ANYTIME WE PASS.
JESUS WILL BE AS HAPPY TO SEE US
AS WE ARE TO SEE HIM.**



Fresh starts and new agreements generate excitement and hope. With renewed energy and an optimistic outlook, people begin new jobs, countries work toward peace, teams rebuild their season, and broken promises are restored. Setting aside past mistakes and starting again can be our best hope for restoration, reconciliation and progress.

God's covenants with His People are fresh starts and new beginnings. Noah, Abraham, and Moses entered into new covenants with God and the people were given a new sense of purpose, of life and of faith. They were renewed by the mercy and love of God and accomplished great things. The terms of the covenant spelled out God's Will and the people's faith was renewed and restored.

Lent is our time of renewal and restoration. We are given a fresh start through penance—both sacramental and personal. This is our opportunity to take a spiritual inventory, to set a new course, and to grow in faith, in grace and in holiness. In Baptism, we begin a journey of faith, to love with His heart, to think with His mind, to act with His Will. To be a follower of Christ is to live a life of conversion and penance, seeking union with God and the community of the Church. Our daily conversion of mind, body and soul takes us closer to Jesus and the sacrifice of the cross. This Lent, make each day count. Do just one thing, one simple act that will make you stop, think and choose the Lord. Renew your own agreement with the Lord.

James Gaffney

WORCESTER MEN'S CONFERENCE

Men (of all ages, including teens and college students) are invited to this conference at Worcester's DCU Center on Saturday, March 16, 2024. Adult tickets are \$50 until March 4, 2024; afterwards \$60.

Visit the conference website for information and to purchase tickets online www.catholicmenworc.com



After John had been arrested, Jesus came to Galilee proclaiming the gospel of God...." (Mark 1:14) Have you ever thought about how difficult it must have been for Jesus to go to Galilee, knowing that John had just been arrested for teaching the same message that

He was proclaiming. It took great love and trust for Jesus to do what the Father had sent Him here on earth to do. In the same way, living a stewardship lifestyle takes great love and trust from us. We must be willing to surrender completely to God, trusting that He will always give us all that we need to fulfill His plan for us.



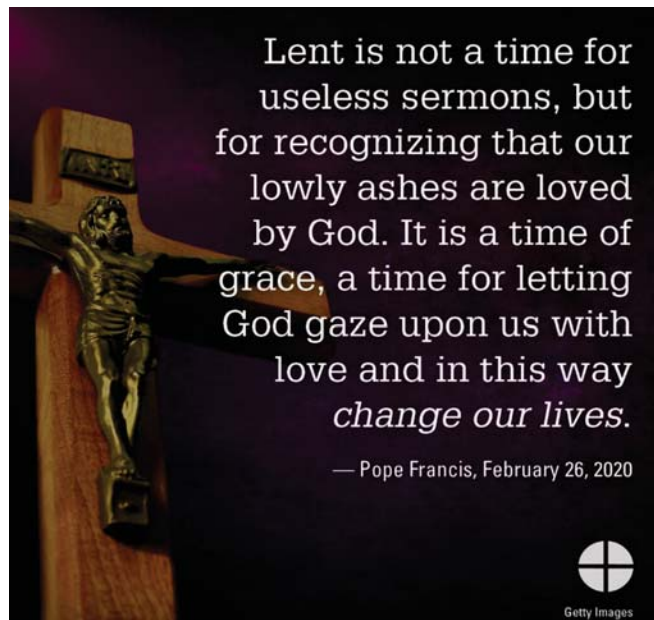
During Lent, we are invited to encounter God in a deeper way through prayer, fasting, and almsgiving and to answer our Gospel call to see the face of Christ in our sisters and

brothers in need. During this liturgical season, CRS Rice Bowl—Catholic Relief Services' Lenten program—invites us to encounter God and our global family to learn the impact of issues like hunger and climate change and to reflect on how the Eucharist—the Bread of Life—compels us to share bread for life with all members of our human family.

Lenten calendars and symbolic "rice bowls" are available in the vestibule of the church. We invite you to take one to use with your family this Lent.

SEEKING LEADERSHIP FOR OUR SENIOR ADULT MINISTRY

The St. Luke's Senior Adult, Forever Young, ministry is in need of filling some very important offices if the organization is to remain functioning. We are currently in need of a Chairperson, Co-Chairperson, and Program Coordinator. The group has been dwindling in recent years and we are in need of attracting more active members if we are to remain operational. You do not need to be a current member to inquire about filling a leadership role. If interested and you would like more information, we will be meeting on Monday, February 26, 2024, in the Parish Center at 10:15 a.m. You may also contact Julie Basque at either pastoralassociate@stlukes-parish.org or 508-366-8509



Lent is not a time for useless sermons, but for recognizing that our lowly ashes are loved by God. It is a time of grace, a time for letting God gaze upon us with love and in this way *change our lives.*

— Pope Francis, February 26, 2020



Diocese of Worcester
Office of the Bishop
49 Elm Street
Worcester, Massachusetts



Dear Brothers and Sisters in Christ,

“Jesus is calling us deeper.” That reminder of our three-year National Eucharistic Revival is intended to “renew the Church by enkindling a living relationship with the Lord Jesus in the Holy Eucharist” (www.eucharisticrevival.org). That call of renewal through a deepened relationship with Christ is particularly apt in this season of Lent.

We have begun our forty-day journey of deepened prayer, more frequent penance, and greater charity. We embark on the journey because we are sinners in need of and called to repentance by Jesus Christ. Lent’s annual journey also prepares us for the fruitful celebration of the Paschal Mystery—from the Last Supper on Holy Thursday and His Passion and Death on Good Friday to his Resurrection on Easter Sunday.

The forty penitential days of Lent derive from Jesus’ forty days of prayer and fasting in the desert. They also call to mind Moses’ forty days on Mount Sinai during the forty-year journey of the Israelites through the desert to the Promised Land.

During that long journey, the Israelites were sustained by the manna which each night came down from Heaven to nourish and strengthen the people. Centuries later, Jesus would say, “I am the living bread which comes down from heaven; if anyone eats of this bread he will live forever; and the bread that I give is my flesh for the life of the world” (John 6: 51). Just as the Israelites would not have made it to the Promised Land without the manna from Heaven, we cannot complete the journey of life to Heaven without the nourishment of Christ in the Holy Eucharist (“unless you eat of the flesh of the Son of Man and drink His blood, you have no life in you” [John 6: 53]).

In addition to Lenten penances and almsgiving, please consider going to weekday Masses and making visits to the Church outside of Mass to adore the Lord whether reserved in the tabernacle or exposed in the monstrance. Through a greater Eucharistic devotion, we will appreciate, even more, Christ’s presence to us, the graces He offers at every Mass, and the peace and comfort of a prayerful visit to Church. Thus, nourished and strengthened, we will be better equipped to meet life’s challenges, reflect God’s love, and make progress on our journey to Him.

With every prayerful best wish, I remain
Sincerely yours in Christ,
Most Reverend Robert J. McManus
Bishop of Worcester



The **Prayer Shawl Ministry** will meet Tuesday February 13th from 1:00 – 2:30 PM in Room 23 of the Parish Center. This ministry is open to any person interested in knitting or crocheting prayer shawls, lap robes or afghans for the sick and suffering. The ministry also makes hats and mittens for the Giving Tree at Christmas. If you would like to participate but can’t make the monthly meetings, please e-mail/call Carol Mulcahy at cmulcahy@live.com/508-898-0409 for more information about patterns and yarn. We would love to have new members since there are many requests for the handmade items. Yarn is available at the Parish Center.



ENHANCE YOUR EXPERIENCE OF LENT AND THE EASTER SEASON!

We cordially invite you to consider enhancing your experience of Lent, the Easter season and beyond, by joining our St Luke music ministry team. The choir warmly welcomes your gifts of time and talent. Rehearsals take place on Thursday evenings from 7:00 to 8:30, and we sing at the 11:00 Mass on Sunday morning. If you have any questions, or would like more detailed information, please speak to Craig, our music director, or any member of the choir. If you feel that the cantor ministry might be a good fit for you, please speak to Craig. You can also reach him at : music@stlukes-parish.org or: craigistine@aol.com. All are welcome!

SAINT LUKE THE EVANGELIST CHURCH



ST. LUKE THE EVANGELIST CHURCH
70 West Main Street, Westborough

PARISH CENTER OFFICES
1 Ruggles Street, Westborough, MA 01581
Office 508-366-5502
Faith Formation & Outreach 508-366-8509
www.stlukes-parish.org

PARISH STAFF:

Fr. Diego Buritica, Pastor

Contact: 508-366-5502 (Office)

email: frdiego@stlukes-parish.org

Fr. Sagar Gundiga, Associate Pastor

Contact: 508-366-5502

Email: frsagar@stlukes-parish.org

Craig Stine, Director of Music

email: music@stlukes-parish.org

Denise Pelkey, Youth Minister

e-mail youthministry@stlukes-parish.org

Melissa Baril Lower, Faith Formation

email: religiouseducation@stlukes-parish.org

Nan Ford, Parish Outreach

e-mail outreach@stlukes-parish.org

Julie Basque, Pastoral Associate

e-mail pastoralassociate@stlukes-parish.org

Maria Gasser, Parish Secretary

e-mail office@stlukes-parish.org

Pam Vaccari, Parish Ctr. Secretary

e-mail religiousoffice@stlukes-parish.org

Linda Underwood, Finance Manager

e-mail financeoffice@stlukes-parish.org

Lawrence Orlando, Building and Grounds

Patrick Malone, Building and Grounds

ST. LUKE'S PASTORAL COUNCIL

EMAIL: pastoralcouncil@stlukes-parish.org

Ellen Gualtieri, Chair

Kathleen Gorczyca, Vice Chair

Colin Murphy, Secretary

Michael Alden

Christian Hedrick

Deborah Foody

John Griffin

Bill Kenney

Tom Kieler

Brian McLaughlin

Irma Torres

Deborah Ziegler

Mass Schedule

Saturday: 4PM, in Spanish 6PM

Sunday: 7:30AM, 9:00AM, 11:00AM

Weekday Masses

Monday through Friday,

9:00 AM

**NEW TO THE PARISH
WELCOME**

SACRAMENT OF BAPTISM

*Please call Maria at 508-366-5502
for information*

SACRAMENT OF RECONCILIATION

*Saturday from 3:00 to 3:45PM ~ also by personal
request. Reconciliation Room is handicapped
accessible*

SACRAMENT OF MARRIAGE

*Please contact a Priest at least six months
in advance*

RCIA

*Contact the parish secretary if interested
in becoming Christian in the Catholic faith
tradition.*

VISITATION OF THE SICK

*Our extraordinary ministers are always pleased
to bring the Eucharist to parishioners who are
unable to join us for weekly worship. If you or a
family member would like to receive Commun-
ion, please call Julie at 508-366-8509. If you
know of someone from the parish who is in the
hospital, please let us know.*



BECOME DEBT FREE IN AS LITTLE AS 24-48 MONTHS

If you owe more than \$10,000 in credit card or other unsecured debt, see how National Debt Relief can help resolve your debt for a fraction of what you owe.

Call today:

+1 (866) 605-1934



A Help Button Should Go Where You Go!



To be truly independent, your personal emergency device needs to work on the go.

MobileHelp® allows you to summon emergency help 24 hours a day, 7 days a week by simply pressing your personal help button. Unlike traditional systems that only work inside your home, a MobileHelp medical alert system extends help beyond the home. Now you can participate in all your favorite activities such as gardening, taking walks, shopping and traveling all with the peace of mind of having a personal alert system with you. MobileHelp, the "on-the-go" help button, is powered by one of the nation's largest cellular networks, so there's virtually no limit to your help button's range.

No landline? No problem! While traditional alert systems require a landline, with the MobileHelp system, a landline is not necessary. Whether you are home or away from home, a simple press of your help button activates your system, providing the central station with your information and location. Our trained emergency operators will know who you are and where you are located. If you're one of the millions of people that have waited for an alert service because it didn't fit your lifestyle, or settled for a traditional system even though it only worked in the home, then we welcome you to try MobileHelp. Experience peace of mind in the home or on the go.

GET OUR SPECIAL OFFER NOW:

- ✓ **FREE** EXPEDITED SHIPPING*
- ✓ **FREE** ONE MONTH SERVICE*
- ✓ **50% OFF** AUTO FALL DETECT*
- ✓ **plus FREE** EQUIPMENT TO USE!



Unlike "stay-at-home" emergency systems MobileHelp protects you:		
Places where your Help Button will work	MobileHelp	Traditional Help Buttons
At Home	✓	✓
On a Walk	✓	✗
On Vacation	✓	✗
At the Park	✓	✗
Shopping	✓	✗

MobileHelp Features:

- Simple one-button operation
- Affordable service
- Amplified 2-way voice communication
- 24/7 access to U.S. based emergency operators
- GPS location detection
- Available Nationwide

OUR BEST OFFER EVER!
From \$19.95* /month



MobileHelp

1-855-444-3698



*For a limited time - promotions available for select systems and subscription plans, please call for specific details. Offers are valid for new customers and for the first year of service and cannot be combined with any other offers. \$19.95 is the monthly subscription price for a MobileHelp Classic (at home only) system. There is a one-time \$49.95 processing fee to subscribe to this plan. Equipment shown is the MobileHelp D20 (at home and on the go) system available at a higher monthly cost. Most equipment is included at no cost while actively subscribing and must be returned upon cancellation. Free one month of service offer valid with purchase of Annual plan and includes month 13 at no additional charge. Refer to terms and conditions for specific details. Depending on the promotion chosen, you may receive an additional savings of \$5.00 off the \$11 retail price of Fall Detection service. After first year, Fall Detect pricing reverts to discounted price of \$8.25/month when combined with MobileHelp Connect Premium. Fall Detection does not detect 100% of falls. If able, users should push their help button when they need assistance. Fall detection is not intended to replace a caregiver. MobileHelp is a registered trademark, patented technology. Current GPS location may not always be available in every situation on the cellular network at all times. Expedited shipping offer is for Annual plans made prior to 3 PM EST Mon-Fri. Expedited shipping is standard 2-day - no deliveries on Saturdays/Sundays or to Hawaii or Alaska. Shipping delays may occur due to situations beyond our control.

MPH-01045 Rev. 1

LeafFilter®
GUTTER PROTECTION

CLOG-FREE GUTTERS FOREVER



EXCLUSIVE LIMITED TIME OFFER!

15% OFF + 10% OFF + 0%
YOUR ENTIRE PURCHASE SENIORS & MILITARY! APR FOR 24 MONTHS**



Promo Code: 285

FREE GUTTER ALIGNMENT + FREE GUTTER CLEANING*



CALL US TODAY FOR A FREE ESTIMATE

1-877-319-0949

Mon-Thurs: 8am-11pm, Fri-Sat: 8am-5pm, Sun: 2pm-8pm EST

A COMPANY OF LEAFHOME

**Wells Fargo Home Projects credit card is issued by Wells Fargo Bank, N.A., an Equal Housing Lender. Special terms for 24 mo. apply to qualifying purchases of \$1,000 or more with approved credit. Minimum monthly payments will not pay off balance before end of promotional period. APR for new purchases is 28.99%. Effective - 01/01/2023 - subject to change. Call 1-800-431-5921 for complete details. The leading consumer reporting agency conducted a 16 month outdoor test of gutter guards in 2010 and recognized LeafFilter as the "#1 rated professionally installed gutter guard system in America." *For those who qualify. One coupon per household. No obligation estimate valid for 1 year. Offer valid at time of estimate only. See Representative for full warranty details. Manufactured in Plainville, Michigan and processed at LMT/Mercer Group in Ohio. AR #036692032, CA #1035795, CT #WHC0649905, FL #CBC056678, IA #C127230, ID #RCE51604, LA #559544, MA #175447, MD #WHIC148329, MI #2102212986, #262000022, #262000043, #2106212946, MN #R731804, MT #226192, ND 47304, NE #50145-22, NJ #13VH09953900, NM #408693, NV #0086990, NY #H-19114, H-52229, OR #218294, PA #PA069383, RI #GC-41354, TN #7656, UT #10783658-5501, VA #2705169445, WA #LEAFPNW822J2, WV #WV056912.

Make the smart and ONLY CHOICE when tackling your roof!



ERIE
Metal Roofs

FREE ESTIMATE
1.855.720.0765
Expires 3/31/2024

Limited Time Offer! SAVE!

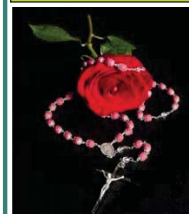
up to 50% OFF ON YOUR INSTALLATION + TAKE AN ADDITIONAL 10% OFF
Additional savings for military, health workers and first responders

New orders only. Does not include material costs. Cannot be combined with any other offer. Minimum purchase required. Other restrictions may apply. This is an advertisement placed on behalf of Erie Construction Mid-West, Inc. ("Erie"). Offer terms and conditions may apply and the offer may not be available in your area. If you call the number provided, you consent to being contacted by telephone, SMS text message, email, pre-recorded messages by Erie or its affiliates and service providers using automated technologies notwithstanding if you are on a DO NOT CALL list or register. Please review our Privacy Policy and Terms of Use on homeservicescompliance.com. All rights reserved. License numbers available at eriemetalroofs.com/erie-licenses/. MA License Number: CSEA-106394



MADE IN THE U.S.A.

"God is Love" - 1 John 4:8



841 Main Street
Tewksbury, MA 01876
(978) 851-9103

Rosaries from Flowers

"Handmade from the Flowers of your Loved One"

www.rosariesfromflowers.com

Pickering & Son

FUNERAL HOMES

Westborough Funeral Home
62 West Main Street • Westborough, MA
508-366-4458
www.westboroughfuneralhome.com

Upton Funeral Home
45 Main Street • Upton, MA
508-529-6992
www.uptonfunerals.com

David A. Pickering & Andrew D. Pickering, *Directors*

ART & FRAME
Emporium
Your design, print, frame &
art supply specialists... since 1982
508-366-5650
www.artandframeemporium.com

ATTY CAROLYN R. SPRING
Estate Planning and Elder Law
Westborough • 508-898-1835
www.cspringlaw.com
Mention this ad for 10% off services

Curry
Imagine • Print • Communicate
The Gardner Family
800-540-4993
www.CurryPrinting.com

www.EWTN.com
TV, Radio, Newspaper
www.GodANDCountryNOW.com
Vic@VicMelfa.org

ABC Medical
Psychiatric Services for Children & Adults
833-394-7998 / www.abcmmedical.com

Memorial Ads
Available
617-779-3771

The Christensen Team
RE/MAX Executive Realty



Preben & Mary
Christensen
508-868-5483



508-366-5475

Honesty, Integrity, Results!
Your local Real Estate Experts



Joanne
Fontaine
508-479-9691

The Bath or Shower You've Always Wanted
IN AS LITTLE AS A DAY



\$1000 OFF*

AND

**No Payments & No Interest
For 18 Months****

OFFER EXPIRES 3/31/2024

BCI BATH & SHOWER

CALL NOW (844) 300-2419

*Includes product and labor; bathtub, shower or walk-in tub and wall surround. This promotion cannot be combined with any other offer. Other restrictions may apply. This offer expires 3/31/24. Each dealership is independently owned and operated. **Third party financing is available for those customers who qualify. See your dealer for details. ©2024 BCI Acrylic, Inc.

Get started with
3 months free*



WeightWatchers
weightwatchersoffer.com/53

*With select plan purchase. Restrictions apply.

Designer JEWELERS

Designer Jewelers
18 Lyman Street
Westborough
Open Mon. - Sat.

Fine Jewelry • Watches
Jewelry Repair • Gifts for All Occasions
508-366-5512 • www.thedesignerjewelers.com

PAUL CASELLO
Quick Response to all Calls
ELECTRICAL SERVICES LLC
978-870-2111
150 Milk Street, Westborough, MA 01581 • MA LIC #21083-A

SAME DAILY PRICE
7 DAYS A WEEK
Weekend And Evening Appointments Available

Connect Anywhere, Anytime.
Enjoy Free Internet Data on Your Mobile Devices with the Affordable Connectivity Program. You qualify if you receive:

- Medicaid
- SNAP
- SSI
- WIC
- Veterans Pension
- Survivors or Lifeline Benefits
- Tribal Assistance Program
- Housing Assistance

maxsip TELECOM
Get a subsidized 4G Android Tablet for \$20
CALL TODAY (888) 490-8957

AD SPACE AVAILABLE
617-779-3771



Where You'll Find
Knowledge, Quality, & Value
Free Delivery
508-881-2660
134 Front St. Ashland
www.ashlandlumber.com

PERPETUAL ADORATION
24 Hours a Day 7 Days a Week



BETANIA II
Catholic Evangelization Center
154 Summer St - Medway MA
Come join us or sign up today
508.633.4894 - adorationpro.org/betania2

