



Saint Luke the Evangelist

A Roman Catholic Community

Serving the People of Westborough Since 1870

SEVENTH SUNDAY OF EASTER

But now I am coming to you. I speak this in the world so that they may share my joy completely. I gave them your word, and the world hated them, because they do not belong to the world any more than I belong to the world. I do not ask that you take them out of the world but that you keep them from the evil one. Jn. 17: 13-15



Today's painting captures the moment in the gospel referenced in several ways including: "**The Prayer of Jesus**," the "Priestly Prayer" or, as we see today, "The Last Sermon of our Lord." This moment took place *after* the Last Supper, but *before* Christ and the apostles go to the garden of Gethsemane. Jesus prays to God the Father in a profound and symbolic way that Tissot captures by making direct allusions to the Priest's role in the Mass. Christ is centered among the apostles with a soft yet dramatic warm light washing the scene from above. Dressed in a way typical of the time, yet familiar to us, Christ wears a large mantle (chasuble), which is being held up on either side by Peter (left) and John (right). This gesture allows us to see Christ holding his hands to his heart. His clothing foreshadows the garments worn by contemporary priests. And we are reminded of the moment in a traditional (Latin) mass when the altar servers would lift the vestments to allow the priest to raise the consecrated host. This was common in Tissot's time so it would have been an obvious parallel to a contemporary viewer.

GATHER HYMNAL
PAGE 1081
SEVENTH SUNDAY OF EASTER

MASS INTENTIONS

Saturday, May 11

4:00pm **Patrick Blaney**
by his family
6:00pm **Spanish Mass**

Sunday, May 12

7:30am **Anne Heyward & Bertha Savoie**
by Savoie family
9:00am **Vilma Henderson**
by her family
11:00am **Maria Barretti**
by her family
Baccalaureate Mass

Monday, May 13

9:00am **Kathryn T. Freeman**
by son Paul

Tuesday, May 14

9:00am **Lawrence O'Brien & Larry Smith**
by family

Wednesday, May 15

9:00am **Jim Killeen**
by Pat & Kenny Gagnon

7:00pm **TOGETHER IN THE SPIRIT**
Thursday, May 16

9:00am **Peter Rossi**
by Pat & Kenny Gagnon

Friday, May 17

9:00am **Stephen Sullivan**
by family

Saturday, May 18

4:00pm **OUTPOURING OF THE GIFTS OF THE
HOLY SPIRIT ON ST. LUKE'S PARISH
(BILINGUAL)**

Please note — there is no 6:00pm Mass

Sunday, May 19

PENTECOST SUNDAY

7:30am **OUTPOURING OF THE GIFTS OF THE
HOLY SPIRIT ON ST. LUKE'S PARISH**

9:00am **Olivia Colby**

11:00am **OUTPOURING OF THE GIFTS OF THE
HOLY SPIRIT ON ST. LUKE'S PARISH**



Please Pray for...

Nicole Bates, Susan Bailey, Jonathan Tomashefsky, William Fargelli,
Brian Howland, Michael LeBlanc, Mary Mahan, Becky Rawson
Norman Beland, Bev Longime, James Wright, Evelyn Croteau
Annabelle Duvane, Shirley DePalma, Agnes Limberger, Zachary Collins,
Kupaa Keiley, Tiffany Kelley, Margie Morcone, Sharon Beaulieu,
Mildred Raymond, Stephen & Kimberly Bankcroft, Toby Claufon,
Joe Smith, Dawn Haight, Carol Aloisi, Teresa Putnam, Carmelia Potenti,
Charles Arkle, Leanne McCann, Ellie Carlson, Jane Burke, Hayleigh Scott,
Kellan Keough, Dorothy Clinton, Sr. Pamela Philbin, Karen Mooney,
Sandy Thatcher Kerr, Sarah McMenemy, Helen Galica, Erik Olsen,
Brendon Crowley, Richard Kane, Grace Roche, Jack Curtin, Jim Bennett,
John Lynch, Kathleen Farrar, Kirolos Gergis, Gregg Merloni, Tome Valadao,
Lynn St. Jean, Gene Buffo, Christine, Patrick, Robert & Coutinho family
Maryann Bisco, Susan Garry, Melvin Boucher, T.J. Bautz, Joan Fallon,
Edward Hubbell, Nancy Camp, David Perry, John Durnan, Linda Darby,
Annie Mason, Nancy Santory, Laconya Mobley, Maria Matejko,
Gary Wilson, Jr., Debbie Giroux, Kevin & Donna Brennan, Luz Chavez,
Vicki Foley, Joel Rivera, James Thomas, Christina Narensky,
Chloe Nascimento, Ann Martin, Michael Berthuime, Trisha Suzi,
Joan Sanders, Sofia Shahin, Sarah Cox, Hailie McLatchey, Barbara Auger,
George Cabana, Beverly Taylor, Jeanne Amendola, Jack Walker, Daniel Baker
Rebecca Coax, Robert Trant, Michael McAndless, Michael Del Pozzo,
David Sawyer, Madison Knopf, Claire Kennedy, Susanne Ollman,
Frank Sannelli, Pat & John Lusek, Michael Zancewicz, Kristy Cautello,
Judy Melfa, Neil Kenny, Joseph Malzone, Lois Kerbel, Michael Turpin,
Nick Johnson, Patricia Amorelli, Connor Blaney, Debbie Krikler,
Demetrius Mobley, Gary Shults, Erin Magrane, George Beecher

**Let us remember to pray for all the men and women who are
over seas in harm's way.**

We remember those who have died

**EXPOSITION OF THE
BLESSED SACRAMENT & ADORATION
TUESDAY 9:30AM TO 6:00PM
Divine Mercy Chaplet 3:00pm
Prayers For Sanctity of Life 5:00pm
BENEDICTION AT 6:00PM**

**May is the
Month of Mary!**



Cover Image James Tissot, *The Last Sermon of Our Lord*, 1886–1894.

Source: *The Life of Our Lord Jesus Christ (La Vie de Notre-Seigneur Jésus-Christ)*, Brooklyn Museum, NY. Public Domain Text © Christian A. Hedrick

INTERNATIONAL POTLUCK DINNER



To celebrate the Feast of Pentecost, St Luke's Parish will be hosting our annual Potluck Dinner in the Parish Center on Saturday, May 18th, immediately following the 4PM Bilingual Mass. We invite all families to join us and ask you to bring a traditional dish from your culture.

This is always a great evening and a wonderful opportunity to meet other parishioners. Please let us know if you are coming by filling out the sign-up sheets found in the vestibule of the church.

If you have any questions, or would like to help, please call Nan Ford/Parish Outreach at

508 366-8509 Ext. 18 Thank you!



PREPARE FOR PENTECOST SUNDAY!

Join us for **OVERNIGHT EXPOSITION OF THE BLESSED SACRAMENT** on Monday night May 13th leading into the morning of May 14th. Please call Julie Basque if you can sign up for an overnight hour. (508-366-8509 ext 15 or use the QR code to access the sign up link.



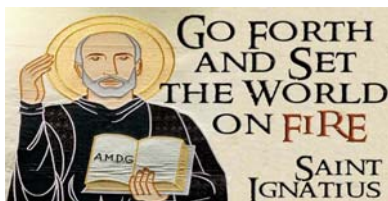
tinyurl.com/OvernightAdoration

Spending an hour with Jesus during the night hours is a unique experience. The graces and peace will be worth your lost time of sleep. Any questions or concerns please email Julie Basque at pastoralassociate@stlukes-parish.org



VOLUNTEERS NEEDED: NURSING HOME MINISTRY

Our vibrant nursing home ministry is looking for new members. To bring communion to our two Westborough nursing homes, we need 16 volunteers monthly. If you have a love of the Eucharist and enjoy being with people, we would love to train you to be an extraordinary minister of Holy Communion for our nursing home parishioners. Time commitment is once a month on a Monday morning from 9am until 12 noon. If interested, please contact our pastoral associate Julie Basque for more information and/or training. 508-366-8509, ext. 15 or email pastoralassociate@stlukes-parish.org.



Our Lady of Fatima

Mary appeared to three peasant children near Fatima, Portugal, six times between May 13 and October 13, 1917, and asked for prayers for world peace and an end to World War I, for sinners, and for the conversion of Russia. She entrusted the children with three secrets, regarding devotion to her Immaculate Heart, a vision of hell, and a "bishop in white" shot by soldiers firing bullets and arrows. Many connect the third secret to the attempted assassination of Blessed Pope John Paul II on May 13, 1981, and the pope thanked Mary for guiding the bullet and saving him. At the Vatican last October 13, Pope Francis stood before the statue of Our Lady from the Fatima shrine and formally entrusted the world to Mary.



MEET OTHER YOUNG FAMILIES IN THE PARISH COMMUNITY!

SATURDAY MAY 25TH

Join us for a family walk along the Upper Charles Trail, a paved rail trail that starts in Milford, MA. This walk is suitable for families with babies in strollers and/or kids riding bikes at adult walking pace. This is an out-and-back walk and we will plan to walk for an hour and then turn back for the parking lot. We expect to walk a total of 3-4 miles. The rail trail starts just south of the headwaters of the Charles River and follows the Charles River for some of the trip. Come enjoy seeing spring in bloom in the forest!"

Those carpooling meet at 9:30 in the parish center parking lot. Otherwise we will see you at 10:00 am at the Milford Upper Charles Trail. If interested in joining please contact Julie Basque, pastoral associate at pastoral-associate@stlukes-parish.org Please RSVP.

[https://commons.wikimedia.org/wiki/](https://commons.wikimedia.org/wiki/File:Milford_Upper_Charles_Trail_beginning,_Milford_MA.jpg)

[File:Milford_Upper_Charles_Trail_beginning,_Milford_MA.jpg](https://commons.wikimedia.org/wiki/File:Milford_Upper_Charles_Trail_beginning,_Milford_MA.jpg)



At May 5th, Coffee Hour Ministry of the Month, the Forever Young group shared healthy treats and spoke about their ministry and mission to create fellowship, educational enrichment and community outreach activities. Those 60+ welcome to join! May 20th - 4th Monday of the month - is their next meeting.



The Rite of Christian Initiation for Adults or RCIA constitutes a path for one to learn more about the Catholic faith, and if sense a calling by God, to prepare for the Sacraments of Initiation into Christ's pilgrim church. We are always happy to meet inquirers and invite inquirers to contact us anytime. For more information on RCIA, please call the St. Luke's secretary, Maria Gasser, at 508-366-5502 or the RCIA Team Lead, Bob Thompson, at 508-341-7677. We are anxious to meet and welcome future inquirers!



In some parts of the United States, the Feast of the Ascension is celebrated on Thursday, 40 days after Easter. In other parts, Ascension has been moved to Sunday. How ironic that before Jesus ascends to heaven, He prays that the church will be one! Unity within the Church, however, is not about uniformity in practice; it's about uniformity in beliefs and liturgy, in doctrine and morals, in good works and in constant prayer. In other words, unity means we think, act and pray with the mind and heart of Christ.

The Ascension of Jesus into Heaven is not the end of the mission, but a new beginning as the Apostles are sent to preach the Good News. The message of the Gospel is confirmed by the signs that accompany their preaching, a clear indication that the Lord is working through them. United to Christ, the early Church will grow and prosper.

Jesus did not call the Apostles just to watch Him ascend to the Father. He gives them a mission, just as He gives us a mission, which we sometimes call a vocation. That is the mission and call that unites us together, joined to Christ, the Head of His Body, the Church. But it is not simply a connection for the sake of unity. Faith does not do well standing around and waiting for something to happen. It needs to move, to act, to proclaim in word and deed, through us, that Jesus is the Risen Lord.

James Gaffney

The Forever Young

(St. Luke's Senior Adults)

Welcome Seniors!

May 20, 2024



Join us as we pray the Rosary with our Guest speaker, Neeni Francis, Religious Education Coordinator at St. Gabriel's Parish.

Neeni will share a reflection on the Luminous Mysteries and we will Crown Our Lady

Gathering – Refreshments

Short Business Meeting

4th Monday of the Month

9:45 – 11:30 a.m.

EUCCHARISTIC REVIVAL EVENTS IN CLINTON

June 2-9, Encounter the Miracle of Jesus in the Eucharist. Don't miss this spiritual powerhouse of Eucharistic events that will take place St. John, Guardian of Our Lady Parish in Clinton. **June 2 at 3 pm.** - Corpus Christi Eucharistic Procession in Clinton begins at St. John's Church; **June 4 - 6** - "Jesus Thirsts, the Miracle of the Eucharist" movie premiere at area theaters; **June 7 - 9** - Blessed Carlo Acutis Exhibit - "Encounter the Miracle of Jesus in the Eucharist through the Eyes of a Millennial Teen" Learn more: stjohnsclinton.org/bl-carlo-acutis-exhibit-of-eucharistic-miracles. Questions? Call Theresa Hoggins 978-387-2867 or Ornella Quinn 508-361-0974.



Pickleball Padre

Fr. Diego is prepared to play Pickleball with his new T-Shirt from John and Bobbi Cruse!



K of C Council 85 Family CORNHOLE TOURNAMENT

Sunday May 26th

John Boyle O'Reilly Hall

17 Willow Street

Registration @ 12:30 PM

Tournament Begins @ 1:15 PM

Adult Teams and
Parent/Child Teams

Adults - \$15; Children Under 12 - \$10

Food and Water Included

Cash Bar Inside the Hall

Register by May 24th

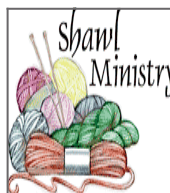
For More Information Contact:

Joe Black, joeblacksr56@gmail.com,
(508) 212-2848

Herman Millet, hjmillet@verizon.net,
(508) 735-8465



Knights of
Columbus®



The Prayer Shawl Ministry will meet Tuesday May 14th from 1:00 – 2:30 PM in Room 23 of the Parish Center. This ministry is open to any person interested in knitting or crocheting prayer shawls, lap robes or afghans

for the sick and suffering. The ministry also makes hats and mittens for the Giving Tree at Christmas. If you would like to participate but can't make the monthly meetings, please e-mail/call Carol Mulcahy at cmmulcahy@live.com/508-898-0409 for more information about patterns and yarn. We would love to have new members since there are many requests for the handmade items. Yarn is available at the Parish Center.



STAY CONNECTED!

Be sure to sign up to receive "Flocknotes" from St. Luke's.

News, Weather Cancellations, Events, Ministry Updates, Important Reminders, Seasonal Reflections, and more! To sign up, text the word STLUKES to the number 84576 Or sign up online: flocknote.com/ StLukesWestborough

SAINT LUKE THE EVANGELIST CHURCH



ST. LUKE THE EVANGELIST CHURCH
70 West Main Street, Westborough

PARISH CENTER OFFICES
1 Ruggles Street, Westborough, MA 01581
Office 508-366-5502

Faith Formation & Outreach 508-366-8509

www.stlukes-parish.org

PARISH STAFF:

Fr. Diego Buriticá, Pastor

Contact: 508-366-5502 (Office)

email: frdiego@stlukes-parish.org

Fr. Sagar Gundiga, Associate Pastor

Contact: 508-366-5502

Email: frsagar@stlukes-parish.org

Craig Stine, Director of Music

email: music@stlukes-parish.org

Denise Pelkey, Youth Minister

e-mail youthministry@stlukes-parish.org

Melissa Baril Lower, Faith Formation

email: religiouseducation@stlukes-parish.org

Nan Ford, Parish Outreach

e-mail outreach@stlukes-parish.org

Julie Basque, Pastoral Associate

e-mail pastoralassociate@stlukes-parish.org

Maria Gasser, Parish Secretary

e-mail office@stlukes-parish.org

Pam Vaccari, Parish Ctr. Secretary

e-mail religiousoffice@stlukes-parish.org

Linda Underwood, Finance Manager

e-mail financeoffice@stlukes-parish.org

Lawrence Orlando, Building and Grounds

Patrick Malone, Building and Grounds

ST. LUKE'S PASTORAL COUNCIL

EMAIL: pastoralcouncil@stlukes-parish.org

Ellen Gualtieri, Chair

Kathleen Gorczyca, Vice Chair

Colin Murphy, Secretary

Michael Alden

Julie Basque

Cristian Carrasco

Deborah Foody

Jaime Gomez

Christian Hedrick

Tom Kieler

Brian McLaughlin

Silvia Pinto

Judy Savoie

Kevin Su

Deborah Ziegler

Mass Schedule

Saturday: 4PM, in Spanish 6PM

Sunday: 7:30AM, 9:00AM, 11:00AM

Weekday Masses

**Monday through Friday,
9:00 AM**

**NEW TO THE PARISH
WELCOME**

SACRAMENT OF BAPTISM

*Please call Maria at 508-366-5502
for information*

SACRAMENT OF RECONCILIATION

*Saturday from 3:00 to 3:45PM ~ also by personal
request. Reconciliation Room is handicapped
accessible*

SACRAMENT OF MARRIAGE

*Please contact a Priest at least six months
in advance*

RCIA

*Contact the parish secretary if interested
in becoming Christian in the Catholic faith
tradition.*

VISITATION OF THE SICK

*Our extraordinary ministers are always pleased
to bring the Eucharist to parishioners who are
unable to join us for weekly worship. If you or a
family member would like to receive Commun-
ion, please call Julie at 508-366-8509. If you
know of someone from the parish who is in the
hospital, please let us know.*

TRUGREEN
Live life outside.®



Save now with
50% OFF*
Your First Application

Get the most out of
your lawn this spring.

SCHEDULE YOUR APPOINTMENT TODAY!
1-855-614-6526

*Special price is for first Lawn service only. Requires purchase of annual plan, for new residential EasyPay, MonthlyPay, or PrePay customers only. Valid at participating TruGreen locations. Availability of services and/or products may vary by geography. Not to be combined with or used in conjunction with any other offer or discount. Additional restrictions may apply. Consumer responsible for all sales tax. *Guarantee applies to annual plan customers only. BBB accredited since 07/01/2012. ©2024 TruGreen Limited Partnership. All rights reserved. In Connecticut, B-0153, B-1380, B-0127, B-0200, B-0151.

A Help Button Should Go Where You Go!

To be truly independent, your personal emergency device needs to work on the go.

MobileHelp® allows you to summon emergency help 24 hours a day, 7 days a week by simply pressing your personal help button. Unlike traditional systems that only work inside your home, a MobileHelp medical alert system extends help beyond the home. Now you can participate in all your favorite activities such as gardening, taking walks, shopping and traveling all with the peace of mind of having a personal alert system with you. MobileHelp, the "on-the-go" help button, is powered by one of the nation's largest cellular networks, so there's virtually no limit to your help button's range.

No landline? No problem! While traditional alert systems require a landline, with the MobileHelp system, a landline is not necessary. Whether you are home or away from home, a simple press of your help button activates your system, providing the central station with your information and location. Our trained emergency operators will know who you are and where you are located. If you're one of the millions of people that have waited for an alert service because it didn't fit your lifestyle, or settled for a traditional system even though it only worked in the home, then we welcome you to try MobileHelp. Experience peace of mind in the home or on the go.

GET OUR SPECIAL OFFER NOW:

- ✓ **FREE EXPEDITED SHIPPING***
- ✓ **FREE ONE MONTH SERVICE***
- ✓ **50% OFF AUTO FALL DETECT***
- ✓ **plus FREE EQUIPMENT TO USE!***



Unlike "stay-at-home" emergency systems MobileHelp protects you:

Places where your Help Button will work	MobileHelp	Traditional Help Buttons
At Home	✓	✓
On a Walk	✓	✗
On Vacation	✓	✗
At the Park	✓	✗
Shopping	✓	✗

MobileHelp Features:

- Simple one-button operation
- Affordable service
- Amplified 2-way voice communication
- 24/7 access to U.S. based emergency operators
- GPS location detection
- Available Nationwide

OUR BEST OFFER EVER!
From **\$19.95***/month

MobileHelp

1-855-444-3698



*For a limited time - promotions available for select systems and subscription plans, please call for specific details. Offers are valid for new customers and for the first year of service and cannot be combined with any other offers. \$19.95 is the monthly subscription price for a MobileHelp Classic (at home only) system. There is a one-time \$49.95 processing fee to subscribe to the plan. Equipment shown is the MobileHelp 300 (at home and on the go) system available at a higher monthly cost. Most equipment is included at no cost while actively subscribing and must be returned upon cancellation. Free one month of service offer valid with purchase of Annual plan and includes month 12 at no additional charge. Refer to terms and conditions for specific details. Depending on the promotion chosen, you may receive an additional savings of \$5.00 off the \$11 retail price of Fall Detection service. After first year, Fall Detection pricing reverts to discounted price of \$4.95/month when combined with MobileHelp Connect Premium. Fall Detection does not detect 100% of falls. If able, users should push their help button when they need assistance. Fall detection is not intended to replace a caregiver. MobileHelp is a registered trademark, patented technology. Current GPS location may not always be available in every situation on the cellular network at all times. Expedited shipping offer is for Annual plans made prior to 3 PM EST Mon-Fri. Expedited shipping is standard 2-day - no deliveries on Saturdays/Sundays or to Hawaii or Alaska. Shipping delays may occur due to situations beyond our control. PF-SPAD205111658 BBNP-01045 Rev. 1

Custom Pull-Out Shelves for your existing cabinets and pantry.



**50% OFF
INSTALL!***



Easy access, less stress, everything within reach.

ShelfGenie®
EVERYTHING WITHIN REACH™

a neighborly company

Call for Your **FREE** Design Consultation:

(855) 625-9032

*Limit one offer per household. Must purchase 5+ Classic/Designer Pull-Out Shelves. EOP 6/30/24. Independently owned and operated franchise. ©2024 ShelfGenie SPV LLC. All rights Reserved.

The Bath or Shower You've Always Wanted IN AS LITTLE AS A DAY



\$1000 OFF*

AND

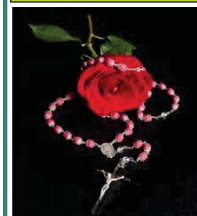
**No Payments & No Interest
For 18 Months****

OFFER EXPIRES 6/30/2024

BCI BATH & SHOWER
CALL NOW (844) 300-2419

*Includes product and labor; bathtub, shower or walk-in tub and wall surround. This promotion cannot be combined with any other offer. Other restrictions may apply. This offer expires 6/30/24. Each dealership is independently owned and operated. **Third party financing is available for those customers who qualify. See your dealer for details. ©2024 BCI Acrylic, Inc.

"God is Love" - 1 John 4:8



841 Main Street
Tewksbury, MA 01876
(978) 851-9103

Rosaries from Flowers

"Handmade from the Flowers
of your Loved One"

www.rosariesfromflowers.com

**AD SPACE
AVAILABLE**
617-779-3771

Pickering & Son

FUNERAL HOMES

Westborough Funeral Home
62 West Main Street • Westborough, MA
508-366-4458
www.westboroughfuneralhome.com

Upton Funeral Home
45 Main Street • Upton, MA
508-529-6992
www.uptonfunerals.com

David A. Pickering & Andrew D. Pickering, *Directors*

ART & FRAME
Emporium
Your design, print, frame &
art supply specialists... since 1982
508-366-5650
www.artandframeemporium.com

ATTY CAROLYN R. SPRING
Estate Planning and Elder Law
Westborough • 508-898-1835
www.cspringlaw.com
Mention this ad for 10% off services

Curry
Imagine • Print • Communicate
The Gardner Family
800-540-4993
www.CurryPrinting.com

www.EWTN.com
TV, Radio, Newspaper
www.GodANDCountryNOW.com
Vic@VicMelfa.org

**AD SPACE
AVAILABLE**
617-779-3771

The Christensen Team
RE/MAX Executive Realty



Preben & Mary
Christensen
508-868-5483



508-366-5475

Honesty, Integrity, Results!
Your local Real Estate Experts



Joanne
Fontaine
508-479-9691



Where You'll Find
Knowledge, Quality, & Value
Free Delivery
508-881-2660
134 Front St. Ashland
www.ashlandlumber.com

SALMON

Care & Support For You
and Your Loved One



Beaumont at Westborough
1 Lyman St. Westborough, MA
508-366-4730
salmonhealth.com

"God is Love" - 1 John 4:8

Memorial Ads
Available
617-779-3771

PROTECT WHAT MATTERS MOST

Whether you are home or away, protect what matters
most from unexpected power outages with a Generac
Home Standby Generator.

SO MONEY DOWN + LOW MONTHLY PAYMENT OPTIONS

REQUEST A FREE QUOTE

CALL NOW BEFORE THE NEXT POWER OUTAGE

(617) 841-4985

*To qualify, consumers must request a quote, purchase, install and activate the
generator with a participating dealer. Call for a full list of terms and conditions.



FREE
7-Year Extended
Warranty*
A \$735 Value!

GENERAC



Designer Jewelers
18 Lyman Street
Westborough
Open Mon. - Sat.

Fine Jewelry • Watches
Jewelry Repair • Gifts for All Occasions
508-366-5512 • www.thedesignerjewelers.com

PAUL CASELLO
Quick
Response to all Calls
ELECTRICAL SERVICES LLC
978-870-2111
CLEAN
COURTEOUS
AFFORDABLE
150 Milk Street, Westborough, MA 01581 • MA LIC #21083-A
SAME
DAILY PRICE
7 DAYS
A WEEK
Weekend And
Evening
Appointments Available

Connect Anywhere, Anytime.

Enjoy Free Internet Data on Your Mobile Devices with the
Affordable Connectivity Program. You qualify if you receive:

- Medicaid
- SNAP
- SSI
- WIC
- Veterans Pension
- Survivors or Lifeline Benefits
- Tribal Assistance Program
- Housing Assistance



Get a subsidized 4G Android Tablet for \$20

CALL TODAY (888) 490-8957

PERPETUAL ADORATION



BETANIA II

Catholic Evangelization Center

154 Summer St - Medway MA

Come join us or sign up today

508.633.4894 - adorationpro.org/betania2

