

# SAINT LUKE THE EVANGELIST PARISH

Westborough, MA

## Tenth Sunday in Ordinary Time

June 9, 2024

*A crowd seated around him told him, "Your mother and your brothers are outside asking for you." But he said to them in reply, "Who are my mother and my brothers?" And looking around at those seated in the circle he said, "Here are my mother and my brothers. For whoever does the will of God is my brother and sister and mother." Mk 3:31-35*



Located about a day's walk from Nazareth on the Sea of Galilee, Capernaum became the town from which Jesus based his ministry. Because of this many significant gospel accounts take place there. Today we find Christ returning "home" to Capernaum (most likely he stayed at the house of Peter and Andrew). There is a lot going on in this gospel reading, but the feeling evoked in both the account and the painting that the Polish painter Kotarbiński captures so well here is the intensity and spontaneity of the crowds that Jesus often attracted; especially when he visited home. Here we see Christ standing just outside of a house speaking to a crowd of people who are so rapt with attention they are blocking the street to hear him. This is a realist painting; part of the 19<sup>th</sup> cen. movement of *Realism* which sought to bring more objectivity to painting (as opposed to idealizing its subjects). Therefore, Kotarbiński recreates what it might have been like at the time at the time of Christ by setting his scene in what looks more like the late 19<sup>th</sup> century Middle East.

GATHER HYMNAL  
PAGE 1120  
TENTH SUNDAY OF  
ORDINARY TIME

MASS INTENTIONS

Saturday, June 8

4:00pm **Angelo Cotroni**  
by his family  
6:00pm Spanish

Sunday, June 9

7:30am **Beth Lambert**  
by WOSL  
9:00am **Christopher Klein**  
by family friends  
11:00am **Tim O'Neil**  
by O'Neil family

Monday, June 10

9:00am **Paul & Betty Salvadore**  
by their family

Tuesday, June 11

9:00am **Anthony Putnam**  
by St. Luke's Parish family

Wednesday, June 12

9:00am **Elena Pucciarelli**  
by her family

Thursday, June 13

9:00am **Charles Vilandre**  
by John Cruse

Friday, June 14

9:00am **Ben Athanasios**  
by Mike and Marlene Blaney

Saturday, June 15

4:00pm **Oscar Najarian**  
by St. Luke's Parish family  
6:00pm Spanish

Sunday, June 16

7:30am **George Heyward & J.W. Romeo Savoie**  
by Savoie family  
9:00am **Bill Henderson**  
by family  
11:00am **Jim Killeen**  
by Knights of Columbus



We invite you to pray  
the Rosary everyday after  
the 9am weekday Mass  
Monday through Friday

*Please Pray for...*

Nicole Bates, Susan Bailey, Jonathan Tomashefsky, William Fargelli,  
Brian Howland, Michael LeBlanc, Mary Mahan, Becky Rawson  
Norman Beland, Bev Longime, James Wright, Evelyn Croteau  
Annabelle Duvane, Shirley DePalma, Agnes Limberger, Zachary Collins,  
Kupaa Keiley, Tiffany Kelley, Margie Morcone, Sharon Beaulieu,  
Mildred Raymond, Stephen & Kimberly Bankcroft, Toby Claufon,  
Joe Smith, Dawn Haight, Carol Aloisi, Teresa Putnam, Carmelia Potenti,  
Charles Arkle, Leanne McCann, Ellie Carlson, Jane Burke, Hayleigh Scott,  
Kellan Keough, Dorothy Clinton, Sr. Pamela Philbin, Karen Mooney,  
Sandy Thatcher Kerr, Sarah McMenemy, Helen Galica, Erik Olsen,  
Brendon Crowley, Richard Kane, Grace Roche, Jack Curtin, Jim Bennett,  
John Lynch, Kathleen Farrar, Kirolos Gergis, Gregg Merloni, Tome Valadao,  
Lynn St. Jean, Gene Buffo, Christine, Patrick, Robert & Coutinho family  
Maryann Bisco, Susan Garry, Melvin Boucher, T.J. Bautz, Joan Fallon,  
Edward Hubbell, Nancy Camp, David Perry, John Durnan, Linda Darby,  
Jack Strouse, Annie Mason, Nancy Santory, Laconya Mobley, Maria Matejko,  
Gary Wilson, Jr., Debbie Giroux, Kevin & Donna Brennan, Luz Chavez,  
Dalene Stephens, Vicki Foley, Joel Rivera, James Thomas, Christina Narensky,  
Chloe Nascimento, Ann Martin, Michael Berthuime, Trisha Suzi,  
Joan Sanders, Sofia Shahin, Sarah Cox, Hailie McLatchey, Barbara Auger,  
George Cabana, Beverly Taylor, Jeanne Amendola, Jack Walker, Daniel Baker  
Rebecca Coax, Robert Trant, Michael McAndless, Michael Del Pozzo,  
David Sawyer, Madison Knopf, Claire Kennedy, Susanne Ollman,  
Frank Sannelli, Pat & John Lusek, Michael Zancewicz, Kristy Cautello,  
Judy Melfa, Neil Kenny, Joseph Malzone, Lois Kerbel, Michael Turpin,  
Nick Johnson, Patricia Amorelli, Connor Blaney, Debbie Krikler,  
Demetrius Mobley, Gary Shults, Erin Magrane, George Beecher

Let us remember to pray for all the men and women who are  
over seas in harm's way.

*We remember those who have died*

EXPOSITION OF THE  
BLESSED SACRAMENT & ADORATION  
TUESDAY 9:30AM TO 6:00PM  
Divine Mercy Chaplet 3:00pm  
Prayers For Sanctity of Life 5:00pm  
BENEDICTION AT 6:00PM

SAINT ANTHONY OF PADUA  
PRIEST AND DOCTOR OF THE CHURCH

FEAST DAY: JUNE 13

Saint Anthony Bread is a term used for offerings made in  
thanksgiving to God for blessings received through the  
intercession of Saint Anthony. Two miracles are attributed  
to the saint where the petitioners had offered to give  
bread to the poor if their prayers were answered. It is a  
practice in some churches to bless and give out small  
loaves of bread on the feast of Saint Anthony.

Photo: Fr. Lawrence Lew, O.P

Cover Image: Cover Image: Wilhelm Kotarbiński, *The Sermon at Capernum*, c.1849-c.1922

Source: <https://www.artrenewal.org/artworks/the-sermon-at-capernaum/wilhelm-kotarbinsky/78035> Text © Christian  
A. Hedrick





## MUSTARD SEED SOUP KITCHEN

St. Luke's is scheduled to serve at the Mustard Seed on July 5th. Since it is a holiday weekend, we are asking for monetary donations so a meal may be catered. If you are interested in contributing, please mail a check by June 25th made payable to "Mustard Seed", addressed to:

Susan Black  
2 Dover Way  
Westborough, MA 01851

I will forward the checks to the Mustard Seed as a donation from the parishioners of St. Luke's. Thank you so much for your generosity!



## Vacation Bible School 2024 SCUBA!

Welcome to the  
Westborough Ecumenical  
Vacation Bible  
School!

This year, we will have an amazing time diving into friendship with God at the **First United Methodist Church**, 120 W. Main Street, Westborough.

**Monday-Friday, August 5th-9th, 9am-12pm**

**Campers are age 3 to 6th grade, including CITs** **Volunteers are 7th grade to adult**

The cost for each camper is \$40 (family maximum of \$80) if you register by July 5th. For registrations after July 5th, the cost is \$45 per camper (no family maximum).

Teens and adults, please consider volunteering! Parents, if you volunteer for the week, your child can participate for free.

The online registration form can be found at <https://firstumchurch.com/vacation-bible-school>

Paper copies are available in the St. Luke's Parish Center. If you have any questions, you may contact Dianne Patrick at [diannepatrick@yahoo.com](mailto:diannepatrick@yahoo.com)



## REGISTRATION FOR FALL RELIGIOUS EDUCATION CLASSES BEGINS ON JUNE 1ST!

Emails have been sent to all previously registered families.

Please see the St. Luke's website at [www.stlukes-parish.org](http://www.stlukes-parish.org) or contact the Religious Education Coordinators for more details.

Melissa Baril-Lower (Grades preK-6)  
[mbarillower@stlukes-parish.org](mailto:mbarillower@stlukes-parish.org)  
(508)366-8509 x16

Denise Pelkey (Grades 7 and up)  
[dpelkey@stlukes-parish.org](mailto:dpelkey@stlukes-parish.org)  
(508)366-8509 x17



## ASP's Annual Auction This Weekend!

**Online Auction Closes  
Sunday, June 9<sup>th</sup> at 9:30pm.**

**Don't miss these great items: Pro-sports tickets, dining, gifts, jewelry, fun family activities, museums, memorabilia, theater, lessons, artwork, and more!**

**BID on fantastic and valuable items, all for a good cause! Help us help families in need!**





The third **KoFC COUNCIL 85 CORNHOLE TOURNAMENT** was held outdoors at the John Boyle O'Reilly Hall on Sunday, May 26th. All participants had a great time! We fielded 20 adult teams and 6 child/adult teams. Over 65 people enjoyed the day which, in addition to cornhole, included delicious hamburgers, hot dogs, finger sandwiches, pasta, salads, meatballs, and goodies! And, we were blessed with a beautiful sunny, dry day.

The team of Fr. Diego and Fr. Sagar were competitive but didn't quite survive. It means they will just have to try again next year!



The Child/Adult Division Champions were **Evan and Eric Halvorsen**, second place went to Cash and Dan Flood, and third place to Noah and Andrew Whamond.

The Adult Division Champs were **Travis and Marco Miccuci ... again!**



Second place went to Andrew and Eric Moritz, and third place to Chuck Lane and Ciro Martinez.

**Congratulations to the winners! Please consider joining us next year.**



### **VOLUNTEERS NEEDED: NURSING HOME MINISTRY**

Our vibrant nursing home ministry is looking for new members.

To bring communion to our two

Westborough nursing homes, we need 16 volunteers monthly. If you have a love of the Eucharist and enjoy being with people, we would love to train you to be an extraordinary minister of Holy Communion for our nursing home parishioners. Time commitment is once a month on a Monday morning from 9am until 12 noon. If interested, please contact our pastoral associate Julie Basque for more information and/or training. 508-366-8509, ext. 15 or email [pastoralassociate@stlukes-parish.org](mailto:pastoralassociate@stlukes-parish.org).

### **SAFE ENVIRONMENT**

Here at St. Luke's, we follow the guidelines of the national charter for the Protection of Children and Young People approved by the US Bishops and the policies of the Worcester Diocese in screening those who work with children in our care and in helping victims of abuse find healing. For questions, information or help please contact Judy Audette, Victim Assistance Coordinator for the Diocese of Worcester at 508-929-4361 (direct line and confidential voicemail is available).

**ST. LUKE THE EVANGELIST CHURCH  
IS OPEN 24 HOURS A DAY, 7 DAYS A WEEK,  
WE CAN MAKE A VISIT ANYTIME WE PASS.  
JESUS WILL BE AS HAPPY TO SEE US  
AS WE ARE TO SEE HIM.**

## **Our God's Delight**

Never forget the sweet presence of God, as do the majority of people. Talk to God as often as you can, for he never tires of listening to you as do the great ones of this earth. If you truly love God, you will never lack for things to say to him. Tell him everything that happens to you; tell him about all your concerns just as you would to the dearest friend.

Don't treat him as if he were a self-impressed prince who only deigns to speak to the great . . . about great things. It delights our God to come down to our level and he is thrilled to hear from us about all our concerns, no matter how small they may appear to us. He loves us so much and takes as good care of you as if you were his only care in the world. God is so devoted to your interests; it is as if Providence existed only to aid you; omnipotence only to help you; the divine mercy and goodness only to sympathize with you, to do you good, to win your confidence by the delicacy of his affection. Open your inner world to God with perfect freedom and pray that he guide you to do his holy will perfectly. Let your every desire and plan be directed only to the discovery of God's good pleasure and to give joy to the divine heart. "Commit your way to the Lord" (Ps 37:5); "ask him to make all your paths straight and to grant success to all your endeavors and plans" (Tb 4:19).

St. Alphonsus Liguori, adapted from Selected Writings



**“FOREVER YOUNG”  
SENIOR ADULTS SPRING LUNCHEON  
JUNE 17**

“Forever Young” will hold their Spring Luncheon at Noon on Monday, June 17, at the Post Office Pub in North Grafton. The cost for the luncheon is \$25.00 per person which includes a choice of select lunches, a nonalcoholic beverage and dessert. Please contact Dianne Patrick at 508-839-3220 or at [diannempatrick@yahoo.com](mailto:diannempatrick@yahoo.com) to reserve your spot. Forms and Payment may be dropped off at the Parish Center in an envelope marked “Forever Young Luncheon” no later than Thursday, June 13. Thank you.



The **PRAYER SHAWL MINISTRY** will meet Tuesday June 11th from 1:00 – 2:30 PM in Room 23 of the Parish Center. This ministry is open to any person interested in knitting or crocheting prayer shawls, lap robes or afghans for the sick and suffering. The ministry also makes hats and mittens for the Giving Tree at Christmas. If you would like to participate but can’t make the monthly meetings, please e-mail/call Carol Mulcahy at [cmmulcahy@live.com](mailto:cmmulcahy@live.com)/508-898-0409 for more information about patterns and yarn. We would love to have new members since there are many requests for the handmade items. Yarn is available at the Parish Center.



**Rail Trail Family Walk**



Ignatian Volunteer Corps (IVC) New England, a yearlong volunteer opportunity for women and men 50 years of age and better, is seeking volunteers for the upcoming (September to June) year. Volunteers generally give two full days/week of service and commit to a monthly spiritual reflection program in the Jesuit tradition. IVC works with nonprofits in the Boston/Worcester/Providence areas that address problems of homelessness, education, immigration and more. Get info and application by contacting regional director Dave Hinchey @ [newengland@ivcusa.org](mailto:newengland@ivcusa.org), or check out the IVC New England website @ [www.ivcusa.org/newengland](http://www.ivcusa.org/newengland). We are interviewing now for September placements.



*“If a kingdom is divided against itself, that kingdom cannot stand.” (Mark 3:24)* Within your parish community, do your ministries collaborate with each other or do they compete against each other? Do your parish ministries work for the greater glory of God or do they work for the glory of the people running them? The primary goal of parish ministry is not to increase Mass attendance, increase the number of volunteers or increase offertory. The primary goal is to be one Body of Christ that helps people take one step closer to Jesus. If it’s not doing that, it’s not worth doing.



SAINT LUKE THE EVANGELIST CHURCH



**ST. LUKE THE EVANGELIST CHURCH**  
**70 West Main Street, Westborough**

**PARISH CENTER OFFICES**  
**1 Ruggles Street, Westborough, MA 01581**  
**Office 508-366-5502**

**Faith Formation & Outreach 508-366-8509**

**[www.stlukes-parish.org](http://www.stlukes-parish.org)**

**PARISH STAFF:**

**Fr. Diego Buriticá, Pastor**

**Contact: 508-366-5502 (Office)**

**email: [frdiego@stlukes-parish.org](mailto:frdiego@stlukes-parish.org)**

**Fr. Sagar Gundiga, Associate Pastor**

**Contact: 508-366-5502**

**Email: [frsagar@stlukes-parish.org](mailto:frsagar@stlukes-parish.org)**

**Craig Stine, Director of Music**

**email: [music@stlukes-parish.org](mailto:music@stlukes-parish.org)**

**Denise Pelkey, Rel. Ed. Coord. Jr/HS, EXT 17**

**e-mail [dpelkey@stlukes-parish.org](mailto:dpelkey@stlukes-parish.org)**

**Melissa Baril Lower, Rel. Ed Coord. PreK-6, EXT 16**

**email: [mbarillower@stlukes-parish.org](mailto:mbarillower@stlukes-parish.org)**

**Nan Ford, Parish Outreach, EXT 18**

**e-mail [outreach@stlukes-parish.org](mailto:outreach@stlukes-parish.org)**

**Julie Basque, Pastoral Associate, EXT 15**

**e-mail [pastoralassociate@stlukes-parish.org](mailto:pastoralassociate@stlukes-parish.org)**

**Maria Gasser, Parish Secretary, EXT 10**

**e-mail [office@stlukes-parish.org](mailto:office@stlukes-parish.org)**

**Pam Vaccari, Parish Ctr. Secretary, EXT 13**

**e-mail [religiouseoffice@stlukes-parish.org](mailto:religiouseoffice@stlukes-parish.org)**

**Linda Underwood, Finance Manager, EXT 19**

**e-mail [financeoffice@stlukes-parish.org](mailto:financeoffice@stlukes-parish.org)**

**Lawrence Orlando, Building and Grounds**

**Patrick Malone, Building and Grounds**

**ST. LUKE'S PASTORAL COUNCIL**

**EMAIL: [pastoralcouncil@stlukes-parish.org](mailto:pastoralcouncil@stlukes-parish.org)**

**Ellen Gualtieri, Chair**

**Kathleen Gorczyca, Vice Chair**

**Colin Murphy, Secretary**

**Michael Alden**

**Julie Basque**

**Cristian Carrasco**

**Deborah Foody**

**Jaime Gomez**

**Christian Hedrick**

**Tom Kieler**

**Brian McLaughlin**

**Silvia Pinto**

**Judy Savoie**

**Kevin Su**

**Deborah Ziegler**

***Mass Schedule***

**Saturday: 4PM, in Spanish 6PM**

**Sunday: 7:30AM, 9:00AM, 11:00AM**

***Weekday Masses***

**Monday through Friday,**

**9:00 AM**

**NEW TO THE PARISH  
WELCOME**

**SACRAMENT OF BAPTISM**

*Please call Maria at 508-366-5502  
for information*

**SACRAMENT OF RECONCILIATION**

*Saturday from 3:00 to 3:45PM ~ also by personal  
request. Reconciliation Room is handicapped  
accessible*

**SACRAMENT OF MARRIAGE**

*Please contact a Priest at least six months  
in advance*

**RCIA**

*Contact the parish secretary if interested  
in becoming Christian in the Catholic faith  
tradition.*

**VISITATION OF THE SICK**

*Our extraordinary ministers are always pleased  
to bring the Eucharist to parishioners who are  
unable to join us for weekly worship. If you or a  
family member would like to receive Commun-  
ion, please call Julie at 508-366-8509. If you  
know of someone from the parish who is in the  
hospital, please let us know.*



**TRUGREEN**  
Live life outside.®



Save now with  
**50% OFF\***  
Your First Application

Get the most out of  
your lawn this spring.

**SCHEDULE YOUR APPOINTMENT TODAY!**  
**1-855-614-6526**

\*Special price is for first Lawn service only. Requires purchase of annual plan, for new residential EasyPay, MonthlyPay, or PrePay customers only. Valid at participating TruGreen locations. Availability of services and/or products may vary by geography. Not to be combined with or used in conjunction with any other offer or discount. Additional restrictions may apply. Consumer responsible for all sales tax. \*Guarantee applies to annual plan customers only. BBB accredited since 07/01/2012. ©2024 TruGreen Limited Partnership. All rights reserved. In Connecticut, B-0153, B-1380, B-0127, B-0200, B-0151.

## A Help Button Should Go Where You Go!

*To be truly independent, your personal emergency device needs to work on the go.*

MobileHelp® allows you to summon emergency help 24 hours a day, 7 days a week by simply pressing your personal help button. Unlike traditional systems that only work inside your home, a MobileHelp medical alert system extends help beyond the home. Now you can participate in all your favorite activities such as gardening, taking walks, shopping and traveling all with the peace of mind of having a personal alert system with you. MobileHelp, the "on-the-go" help button, is powered by one of the nation's largest cellular networks, so there's virtually no limit to your help button's range.

**No landline? No problem!** While traditional alert systems require a landline, with the MobileHelp system, a landline is not necessary. Whether you are home or away from home, a simple press of your help button activates your system, providing the central station with your information and location. Our trained emergency operators will know who you are and where you are located. If you're one of the millions of people that have waited for an alert service because it didn't fit your lifestyle, or settled for a traditional system even though it only worked in the home, then we welcome you to try MobileHelp. Experience peace of mind in the home or on the go.

### GET OUR SPECIAL OFFER NOW:

- ✓ **FREE EXPEDITED SHIPPING\***
- ✓ **FREE ONE MONTH SERVICE\***
- ✓ **50% OFF AUTO FALL DETECT\***
- ✓ **plus FREE EQUIPMENT TO USE!\***



Places where your Help Button will work	MobileHelp	Traditional Help Buttons
At Home	✓	✓
On a Walk	✓	✗
On Vacation	✓	✗
At the Park	✓	✗
Shopping	✓	✗

#### MobileHelp Features:

- Simple one-button operation
- Affordable service
- Amplified 2-way voice communication
- 24/7 access to U.S. based emergency operators
- GPS location detection
- Available Nationwide

**OUR BEST OFFER EVER!**  
From **\$19.95\***/month

**MobileHelp**

**1-855-444-3698**

\*For a limited time - promotions available for select systems and subscription plans, please call for specific details. Offers are valid for new customers and for the first year of service and cannot be combined with any other offers. \$19.95 is the monthly subscription price for a MobileHelp Classic (at home only) system. There is a one-time \$49.95 processing fee to subscribe to the plan. Equipment shown is the MobileHelp 300 (at home and on the go) system available at a higher monthly cost. Most equipment is included at no cost while actively subscribing and must be returned upon cancellation. Free one month of service offer valid with purchase of Annual plan and includes month 12 at no additional charge. Refer to terms and conditions for specific details. Depending on the promotion chosen, you may receive an additional savings of \$5.00 off the \$11 retail price of Fall Detection service. After first year, Fall Detection pricing reverts to discounted price of \$9.95/month when combined with MobileHelp Connect Premium. Fall Detection does not detect 100% of falls. If able, users should push their help button when they need assistance. Fall detection is not intended to replace a caregiver. MobileHelp is a registered trademark, patented technology. Current GPS location may not always be available in every situation on the cellular network at all times. Expedited shipping offer is for Annual plans made prior to 3 PM EST Mon-Fri. Expedited shipping is standard 2-day - no deliveries on Saturdays/Sundays or to Hawaii or Alaska. Shipping delays may occur due to situations beyond our control. PF-SPAD2055111658 BBNP-01045 Rev. 1

## Custom Pull-Out Shelves for your existing cabinets and pantry.



**50% OFF  
INSTALL!\***

**12 MONTH  
NO  
INTEREST  
NO  
PAYMENTS**

Easy access, less stress, everything within reach.

**ShelfGenie®**  
EVERYTHING WITHIN REACH™

a neighborly company

Call for Your **FREE** Design Consultation:

**(855) 625-9032**

\*Limit one offer per household. Must purchase 5+ Classic/Designer Pull-Out Shelves. EOP 6/30/24. Independently owned and operated franchise. ©2024 ShelfGenie SPV LLC. All rights Reserved.

## The Bath or Shower You've Always Wanted IN AS LITTLE AS A DAY



**\$1000 OFF\***

AND

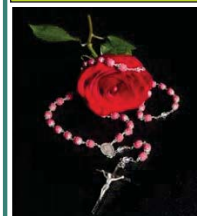
**No Payments & No Interest  
For 18 Months\*\***

OFFER EXPIRES 6/30/2024

**BCI BATH & SHOWER**  
**CALL NOW (844) 300-2419**

\*Includes product and labor; bathtub, shower or walk-in tub and wall surround. This promotion cannot be combined with any other offer. Other restrictions may apply. This offer expires 6/30/24. Each dealership is independently owned and operated. \*\*Third party financing is available for those customers who qualify. See your dealer for details. ©2024 BCI Acrylic, Inc.

"God is Love" - 1 John 4:8



841 Main Street  
Tewksbury, MA 01876  
(978) 851-9103

**Rosaries from Flowers**

"Handmade from the Flowers  
of your Loved One"

www.rosariesfromflowers.com

**AD SPACE  
AVAILABLE**  
617-779-3771



# Pickering & Son

## FUNERAL HOMES

Westborough Funeral Home  
62 West Main Street • Westborough, MA  
**508-366-4458**  
www.westboroughfuneralhome.com

Upton Funeral Home  
45 Main Street • Upton, MA  
**508-529-6992**  
www.uptonfunerals.com

David A. Pickering & Andrew D. Pickering, *Directors*

**ART & FRAME**  
*Emporium*  
Your design, print, frame &  
art supply specialists... since 1982  
508-366-5650  
www.artandframeemporium.com

**ATTY CAROLYN R. SPRING**  
Estate Planning and Elder Law  
Westborough • 508-898-1835  
www.cspringlaw.com  
Mention this ad for 10% off services

www.EWTN.com  
TV, Radio, Newspaper  
www.GodANDCountryNOW.com  
Vic@VicMelfa.org

**AD SPACE AVAILABLE**  
617-779-3771

The Christensen Team  
**RE/MAX** Executive Realty



**Preben & Mary Christensen**  
508-868-5483



**508-366-5475**

**Honesty, Integrity, Results!**  
Your local Real Estate Experts



**Joanne Fontaine**  
508-479-9691



The Gardner Family  
800-540-4993  
www.CurryPrinting.com

Get started with  
**3 months free\***



**WeightWatchers**  
weightwatchersoffer.com/53

\*With select plan purchase. Restrictions apply.

**Designer Jewelers**  
18 Lyman Street  
Westborough  
Open Mon. - Sat.

**Fine Jewelry • Watches**  
Jewelry Repair • Gifts for All Occasions  
508-366-5512 • www.thedesignerjewelers.com

**PAUL CASELLO**  
Quick Response to all Calls  
**ELECTRICAL SERVICES LLC**  
978-870-2111

CLEAN  
COURTEOUS  
AFFORDABLE

SAME DAILY PRICE  
7 DAYS A WEEK  
Weekend And Evening Appointments Available

150 Milk Street, Westborough, MA 01581 • MA LIC #21083-A

**Connect Anywhere, Anytime.**  
Enjoy Free Internet Data on Your Mobile Devices with the Affordable Connectivity Program. You qualify if you receive:

- Medicaid
- Veterans Pension
- SNAP
- Survivors or Lifeline Benefits
- SSI
- Tribal Assistance Program
- WIC
- Housing Assistance

**maxsip** TELECOM

Get a subsidized 4G Android Tablet for \$20

**CALL TODAY (888) 490-8957**

**Ashland Lumber Company**  
Family Owned & Operated Since 1935

Where You'll Find  
**Knowledge, Quality, & Value**  
Free Delivery  
508-881-2660  
134 Front St. Ashland  
www.ashlandlumber.com

**Memorial Ads Available**  
617-779-3771

**SALMON**  
Care & Support For You and Your Loved One

Beaumont at Westborough  
1 Lyman St. Westborough, MA  
508-366-4730  
salmonhealth.com

"God is Love" - 1 John 4:8

**PROTECT WHAT MATTERS MOST**  
Whether you are home or away, protect what matters most from unexpected power outages with a Generac Home Standby Generator.

50 MONEY DOWN + LOW MONTHLY PAYMENT OPTIONS  
REQUEST A FREE QUOTE  
CALL NOW BEFORE THE NEXT POWER OUTAGE  
**(617) 841-4985**

**FREE** 7-Year Extended Warranty\* A \$735 Value!

**GENERAC**

**Before**

**After**

**Make the smart and ONLY CHOICE when tackling your roof!**

**LIMITED TIME OFFER! SAVE!**

**UP TO 50% OFF INSTALLATION**

**FREE ESTIMATE**  
**1.855.720.0765**  
Expires 7/31/2024  
MADE IN THE U.S.A.

**ERIC HOME**

New orders only. Does not include material costs. Cannot be combined with any other offer. Minimum purchase required. Other restrictions may apply. This is an advertisement placed on behalf of Erie Construction Mid-West, Inc. ("Erie"). Offer terms and conditions may apply and the offer may not be available in your area. If you call the number provided, you consent to being contacted by telephone, SMS text message, email, pre-recorded messages by Erie or its affiliates and service providers using automated technologies notwithstanding if you are on a DO NOT CALL list or register. Please review our Privacy Policy and Terms of Use at homeservicescompliance.com. All rights reserved. License numbers available at eriehome.com/erie-licenses/

