

SAINT LUKE THE EVANGELIST PARISH

Westborough, MA

Eleventh Sunday in Ordinary Time

June 16, 2024

Jesus said to the crowds: "This is how it is with the kingdom of God; it is as if a man were to scatter seed on the land and would sleep and rise night and day and through it all the seed would sprout and grow, he knows not how. Of its own accord the land yields fruit, first the blade, then the ear, then the full grain in the ear. And when the grain is ripe, he wields the sickle at once, for the harvest has come." Mk 4:26-29



Although this painting does not appear to be obviously “religious” in its subject matter, it does relate to today’s gospel in a number of ways. The Dutch painter Vincent van Gogh is one of the most famous and well-known Modern painters of all time. His father was a minister so Christian themes play a role in his artwork from time to time. He certainly knew well the parable of the Sower found in today’s gospel and he produced around 30 remarkable versions on this theme. The one we are looking at today is divided into several parts. The clearest division is what is on the right and left of the large diagonal tree in the foreground. The left side shows the slightly twisted body of the Sower walking the fields while spreading seed from his right hand over a recently tilled landscape as the sun rises. On the right there is a building in the distance, whose form suggests it could be a church. But most interestingly is the, no doubt, intentional placement of the sun behind the Sower’s head; acting as a kind of halo highlighting the sacred duty of those who plant the word of God through evangelization.

GATHER HYMNAL
PAGE 1123
ELEVENTH SUNDAY OF
ORDINARY TIME

MASS INTENTIONS

Saturday, June 15

4:00pm **Oscar Najarian**
by St. Luke's Parish family
6:00pm Spanish

Sunday, June 16

7:30am **George Heyward &
J.W. Romeo Savoie**
by Savoie family
9:00am **Bill Henderson**
by family
11:00am **Jim Killeen**
by Knights of Columbus

Monday, June 17

9:00am **Mark Gagnon**
by Burke & McCullough family

Tuesday, June 18

9:00am **Rowland & Anna Ulmer**
by Nancy Papp & family

Wednesday, June 19

9:00am **Pen Thompson**
by her family

Thursday, June 20

9:00am **Lee Mathieu**
by her family

Friday, June 21

9:00am **Greg Heyward**
by Savoie family

Saturday, June 22

4:00pm **Robert Cannon**
by family
6:00pm Spanish

Sunday, June 23

7:30am **Donald Gedick**
by Mike & Marlene Blaney
9:00am **Michael Ford (20th Anv)**
by his family
11:00am **Special Intention**
by Mark & Dianne Patrick

We invite you to pray
the Rosary everyday after
the 9am weekday Mass
Monday through Friday

Please Pray for...

Nicole Bates, Susan Bailey, Jonathan Tomashefsky, William Fargelli,
Brian Howland, Michael LeBlanc, Mary Mahan, Becky Rawson
Joan Sanders, Norman Beland, Bev Longime, James Wright, Evelyn Croteau
Annabelle Duvane, Shirley DePalma, Agnes Limberger, Zachary Collins,
Kupaa Keiley, Tiffany Kelley, Margie Morcone, Sharon Beaulieu,
Mildred Raymond, Stephen & Kimberly Bankcroft, Toby Claufon,
Joe Smith, Dawn Haight, Carol Aloisi, Teresa Putnam, Carmelia Potenti,
Charles Arkle, Leanne McCann, Ellie Carlson, Jane Burke, Hayleigh Scott,
Kellan Keough, Dorothy Clinton, Sr. Pamela Philbin, Karen Mooney,
Sandy Thatcher Kerr, Sarah McMenemy, Helen Galica, Erik Olsen,
Brendon Crowley, Richard Kane, Grace Roche, Jack Curtin, Jim Bennett,
John Lynch, Kathleen Farrar, Kirolos Gergis, Gregg Merloni, Tome Valadao,
Lynn St. Jean, Gene Buffo, Christine, Patrick, Robert & Coutinho family
Maryann Bisco, Susan Garry, Melvin Boucher, T.J. Bautz, Joan Fallon,
Edward Hubbell, Nancy Camp, David Perry, John Durnan, Linda Darby,
Jack Strouse, Annie Mason, Nancy Santory, Laconya Mobley, Maria Matejko,
Gary Wilson, Jr., Debbie Giroux, Kevin & Donna Brennan, Luz Chavez,
Dalene Stephens, Vicki Foley, Joel Rivera, James Thomas, Christina Narensky,
Chloe Nascimento, Ann Martin, Michael Berthuime, Trisha Suzi,
Joan Sanders, Sofia Shahin, Sarah Cox, Hailie McLatchey, Barbara Auger,
George Cabana, Beverly Taylor, Jeanne Amendola, Jack Walker, Daniel Baker
Rebecca Coax, Robert Trant, Michael McAndless, Michael Del Pozzo,
David Sawyer, Madison Knopf, Claire Kennedy, Susanne Ollman,
Frank Sannelli, Pat & John Lusek, Michael Zancewicz, Kristy Cautello,
Judy Melfa, Neil Kenny, Joseph Malzone, Lois Kerbel, Michael Turpin,
Nick Johnson, Patricia Amorelli, Connor Blaney, Debbie Krikler,
Demetrius Mobley, Gary Shults, Erin Magrane, George Beecher

Let us remember to pray for all the men and women who are
over seas in harm's way.

We remember those who have died
Patrick Gilmour

EXPOSITION OF THE
BLESSED SACRAMENT & ADORATION
TUESDAY 9:30AM TO 6:00PM
Divine Mercy Chaplet 3:00pm
Prayers For Sanctity of Life 5:00pm
BENEDICTION AT 6:00PM

HAPPY
Father's Day

God our Father, in your wisdom and love
you made all things. Bless our father. Let
the example of his faith and love shine forth.
Grant that we, his family, may honor him
always with a spirit of profound respect.
Grant this through Christ our Lord.
Amen.

Cover Image : Vincent van Gogh, *The Sower*, 1888.

Source: Van Gogh Museum, Amsterdam (Vincent van Gogh Foundation), Public Domain. Text © Christian A. Hedrick



MUSTARD SEED SOUP KITCHEN

St. Luke's is scheduled to serve at the Mustard Seed on July 5th. Since it is a holiday weekend, we are asking for monetary donations so a meal may be catered. If you are interested in contributing, please mail a check by June 25th made payable to "Mustard Seed", addressed to:

Susan Black
2 Dover Way
Westborough, MA 01851

I will forward the checks to the Mustard Seed as a donation from the parishioners of St. Luke's. Thank you so much for your generosity!



Vacation Bible School 2024 SCUBA!

Welcome to the
Westborough Ecumenical
Vacation Bible
School!

This year, we will have an amazing time diving into friendship with God at the **First United Methodist Church**, 120 W. Main Street, Westborough.

Monday-Friday, August 5th-9th, 9am-12pm

Campers are age 3 to 6th grade, including
CITs Volunteers are 7th grade to adult

The cost for each camper is \$40 (family maximum of \$80) if you register by July 5th. For registrations after July 5th, the cost is \$45 per camper (no family maximum).

Teens and adults, please consider volunteering! Parents, if you volunteer for the week, your child can participate for free.

The online registration form can be found at <https://firstumchurch.com/vacation-bible-school>

Paper copies are available in the St. Luke's Parish Center. If you have any questions, you may contact Dianne Patrick at diannepatrick@yahoo.com



REGISTRATION FOR FALL RELIGIOUS EDUCATION CLASSES BEGINS ON JUNE 1ST!

Emails have been sent to all previously registered families.

Please see the St. Luke's website at www.stlukes-parish.org or contact the Religious Education Coordinators for more details.

Melissa Baril-Lower (Grades preK-6)
mbarillower@stlukes-parish.org
(508)366-8509 x16

Denise Pelkey (Grades 7 and up)
dpelkey@stlukes-parish.org
(508)366-8509 x17

ATTENTION HIGH SCHOOL BOYS Please join us in a Retreat for Young Men

Date: September 28, 2024

Time: 7:45 am - 5:00 pm

Where: St. Benedict Abbey
252 Still River Road, Harvard, MA

Breakfast & lunch will be provided.
Let us know of any special dietary needs.
\$33 per person.

If interested, please contact Denise Pelkey at dpelkey@stlukes-parish.org for a permission slip.





ST. PAUL CENTER FOR BIBLICAL THEOLOGY

In the cryptic message of the prophet Ezekiel, long centuries before the Lord's coming, God gave His people reason to hope. Ezekiel glimpsed a day when the Lord God would place a tree on a mountain in Israel, a tree that would "put forth branches and bear fruit." Who could have predicted that the tree would be a cross on the hill of Calvary, and that the fruit would be salvation?

Ezekiel foresees salvation coming to "birds of every kind"—thus, not just to the people of Israel, but also to the Gentiles, who will "take wing" through their new life in Christ. God indeed will "lift high the lowly tree," as He solemnly promises.

Such salvation surpasses humanity's most ambitious dreams. And so, we express our gratitude in the psalm: "Lord, it is good to give thanks to you." It is indeed good, and better still to give thanks with praise. The psalmist speaks of those who are just upon the earth, but looks to God as the source and measure of justice, of righteousness. Like Ezekiel, he evokes the image of a flourishing tree to describe the lives of the just. The image, again, suggests the Cross as the measure of righteousness.

The Cross is a sign of contradiction to those who would rather "flourish" in worldly terms. As St. Paul emphasizes to the Corinthians, we need courage. Our faith makes us strong, and it is proved in our deeds. He reminds us that we will be judged by the ways our faith manifests itself in works: "so that each may receive recompense, according to what he did in the body, whether good or evil."

God Himself will empower the works He expects from us, though we freely choose to correspond to His grace. In the prophetic oracles, He scattered the seed that sprang up and became the mustard tree, large enough to accommodate all the birds of the sky, just as Ezekiel had seen. He gave this doctrine to His disciples in terms they were able to understand, and He provided a full explanation. In the sacraments He provides still more: the grace of faith and the courage we need to live in the world as children of God.

Dr. Scott Hahn



The Rite of Christian Initiation for Adults or RCIA constitutes a path for one to learn more about the Catholic faith, and if sense a calling by God, to prepare for the Sacraments of Initiation into Christ's pilgrim church. We are always happy to meet inquirers and invite inquirers to contact us anytime. For more information on RCIA, please call the St. Luke's secretary, Maria Gasser, at 508-366-5502 or the RCIA Team Lead, Bob Thompson, at 508-341-7677. We are anxious to meet and welcome future inquirers!



Thanks to an anonymous donation, we now have Picture Missals in the pews to help children follow along at Mass! The children's books in the baskets in the back of the church have been updated as well. Enjoy!

THE KINGDOM OF HEAVEN



In today's Gospel reading Jesus tells us about the Kingdom of Heaven. Heaven isn't just where we will go when we die if we were good. Jesus was telling us that Heaven grows in our hearts when we choose to love God and each other.

Our Lord compares the Kingdom of Heaven to plants that grow up from little seeds. When we were baptized we received the gift of Faith. When we receive the other sacraments, especially Holy Communion, the Faith grows in us, like a plant that has water and sunshine. If we sin it's like little bugs or sickness that start to kill the plant. Confession will take those away so that our Faith can grow again.



How can you help the Kingdom of Heaven to grow in you? Going to Mass and receiving Holy Communion whenever you can, and going to Confession often are the best ways. Praying every day and learning about the Faith and about the saints will also help the Kingdom of Heaven to grow in your heart like a strong, healthy plant!

FREE HOME PICK-UP!

The Society of St. Vincent de Paul of Worcester and Hampden Counties is now offering free curbside pick-up of clothing, shoes, books, and household items. The funds received go to help our neighbors in need with (but not limited to) food, clothing, rent, and utilities.

To schedule a free home pick-up, visit our website at <https://svdpworcester.org> and click on the "How You Can Help" tab, then choose "Schedule a Home Pick-Up." Complete the form, and you're done! You may also contact our partner (CMRK) at 508-474-8966 or scan the QR code below which will direct you to our website.



**Please Help us help our neighbors in need!
Thank you!**

Saints Thomas More and John Fisher

D. 1535

FEAST DAY: JUNE 22

Saints Thomas More and John Fisher were Renaissance men. Talented and energetic, they contributed to the humanist scholarship of early modern England. More wrote theological and philosophical treatises, while making a career as a lawyer and government official. Bishop John Fisher worked as an administrator at Cambridge, confronted the challenge Martin Luther presented to Christian Europe, and most importantly served as Bishop of Rochester. As a bishop, he is notable for his dedication to preaching at a time when bishops tended to focus on politics. These men were brilliant. They both corresponded with Erasmus, who helped Bishop Fisher learn Greek and Hebrew, and who also famously referred to More as a man omnium horarium, a man of all seasons.



Above all their accomplishments, these men bore witness to a deep faith in Christ and his Church. More considered joining religious life and was assiduous in his devotional practices. As a married man, he committed himself wholly to his vocation as a father. At the time, disciplinary practices with children tended to be severe, but More's children testify to his warmth, patience, and generosity. St. John Fisher was a model shepherd and demonstrated remarkable humility. He remained in the small Diocese of Rochester his entire episcopal ministry, devoting himself to his local church rather than seeking promotion to a larger, more powerful diocese.

More and Fisher are well-known for opposing King Henry's divorce. Ultimately, it was their refusal to sign an oath of supremacy that led them to be exe-

cuted. King Henry VIII claimed to be the supreme head of the Church in England, asserting sovereign power over English Christians. Neither Fisher nor More could abide this claim, and their steadfastness to their consciences put them in conflict with the king. They were convicted of treason.

When More made his way to the gallows, he is said to have stated, "I die the King's good servant, but God's first." Both More and Fisher were patriots. They never rose up to incite rebellion or foment revolution. They were not traitors. But when the law of the king came into conflict with the law of Christ, they chose Christ. These men gave their lives for the freedom of the Church and for freedom of conscience. They bear witness to the truth that no government can make a claim on a person's soul.



Catholic
Current

Copyright © 2016, United States Conference of Catholic Bishops, Washington DC. All rights reserved. Image: CNS composite photo/Public domain. Used with permission.

VOLUNTEERS NEEDED:

NURSING HOME MINISTRY

Our vibrant nursing home ministry is looking for new members. To bring communion to our two Westborough nursing homes, we need 16 volunteers monthly. If you have a love of the Eucharist and enjoy being with people, we would love to train you to be an extraordinary minister of Holy Communion for our nursing

home parishioners. Time commitment is once amonth on a Monday morning from 9am until 12 noon. If interested, please contact our pastoral associate Julie Basque for more information and/or training. 508-366-8509,ext. 15 or email pastoralassociate@stlukes-parish.org.



For we must all appear before the judgment seat of Christ, so that each one may receive recompense, according to what he did in the body, whether good or evil." (2 Corinthians 5:10) We are all accountable for all of the gifts God has given us – our time, our talent and our treasure; everything we have and everything we are. Each of us is accountable not only for our own life but for the lives of others as well. One day God will ask each of us what did we do with the gifts we were given. How will you respond?

**ST. LUKE THE EVANGELIST CHURCH
IS OPEN 24 HOURS A DAY, 7 DAYS A WEEK,
WE CAN MAKE A VISIT ANYTIME WE PASS.
JESUS WILL BE AS HAPPY TO SEE US
AS WE ARE TO SEE HIM.**

SAINT LUKE THE EVANGELIST CHURCH



ST. LUKE THE EVANGELIST CHURCH
70 West Main Street, Westborough

PARISH CENTER OFFICES
1 Ruggles Street, Westborough, MA 01581
Office 508-366-5502

Faith Formation & Outreach 508-366-8509

www.stlukes-parish.org

PARISH STAFF:

Fr. Diego Buriticá, Pastor

Contact: 508-366-5502 (Office)

email: frdiego@stlukes-parish.org

Fr. Sagar Gundiga, Associate Pastor

Contact: 508-366-5502

Email: frsagar@stlukes-parish.org

Craig Stine, Director of Music

email: music@stlukes-parish.org

Denise Pelkey, Rel. Ed. Coord. Jr/HS, EXT 17

e-mail dpelkey@stlukes-parish.org

Melissa Baril Lower, Rel. Ed Coord. PreK-6, EXT 16

email: mbarillower@stlukes-parish.org

Nan Ford, Parish Outreach, EXT 18

e-mail outreach@stlukes-parish.org

Julie Basque, Pastoral Associate, EXT 15

e-mail pastoralassociate@stlukes-parish.org

Maria Gasser, Parish Secretary, EXT 10

e-mail office@stlukes-parish.org

Pam Vaccari, Parish Ctr. Secretary, EXT 13

e-mail religiouseoffice@stlukes-parish.org

Linda Underwood, Finance Manager, EXT 19

e-mail financeoffice@stlukes-parish.org

Lawrence Orlando, Building and Grounds

Patrick Malone, Building and Grounds

ST. LUKE'S PASTORAL COUNCIL

EMAIL: pastoralcouncil@stlukes-parish.org

Ellen Gualtieri, Chair

Kathleen Gorczyca, Vice Chair

Colin Murphy, Secretary

Michael Alden

Julie Basque

Cristian Carrasco

Deborah Foody

Jaime Gomez

Christian Hedrick

Tom Kieler

Brian McLaughlin

Silvia Pinto

Judy Savoie

Kevin Su

Deborah Ziegler

Mass Schedule

Saturday: 4PM, in Spanish 6PM

Sunday: 7:30AM, 9:00AM, 11:00AM

Weekday Masses

**Monday through Friday,
9:00 AM**

**NEW TO THE PARISH
WELCOME**

SACRAMENT OF BAPTISM

*Please call Maria at 508-366-5502
for information*

SACRAMENT OF RECONCILIATION

*Saturday from 3:00 to 3:45PM ~ also by personal
request. Reconciliation Room is handicapped
accessible*

SACRAMENT OF MARRIAGE

*Please contact a Priest at least six months
in advance*

RCIA

*Contact the parish secretary if interested
in becoming Christian in the Catholic faith
tradition.*

VISITATION OF THE SICK

*Our extraordinary ministers are always pleased
to bring the Eucharist to parishioners who are
unable to join us for weekly worship. If you or a
family member would like to receive Commun-
ion, please call Julie at 508-366-8509. If you
know of someone from the parish who is in the
hospital, please let us know.*

TRUGREEN
Live life outside.®



Save now with
50% OFF*
Your First Application

Get the most out of
your lawn this spring.

SCHEDULE YOUR APPOINTMENT TODAY!
1-855-614-6526

*Special price is for first Lawn service only. Requires purchase of annual plan, for new residential EasyPay, MonthlyPay, or PrePay customers only. Valid at participating TruGreen locations. Availability of services and/or products may vary by geography. Not to be combined with or used in conjunction with any other offer or discount. Additional restrictions may apply. Consumer responsible for all sales tax. *Guarantee applies to annual plan customers only. BBB accredited since 07/01/2012. ©2024 TruGreen Limited Partnership. All rights reserved. In Connecticut, B-0153, B-1380, B-0127, B-0200, B-0151.

A Help Button Should Go Where You Go!

To be truly independent, your personal emergency device needs to work on the go.

MobileHelp® allows you to summon emergency help 24 hours a day, 7 days a week by simply pressing your personal help button. Unlike traditional systems that only work inside your home, a MobileHelp medical alert system extends help beyond the home. Now you can participate in all your favorite activities such as gardening, taking walks, shopping and traveling all with the peace of mind of having a personal alert system with you. MobileHelp, the "on-the-go" help button, is powered by one of the nation's largest cellular networks, so there's virtually no limit to your help button's range.

No landline? No problem! While traditional alert systems require a landline, with the MobileHelp system, a landline is not necessary. Whether you are home or away from home, a simple press of your help button activates your system, providing the central station with your information and location. Our trained emergency operators will know who you are and where you are located. If you're one of the millions of people that have waited for an alert service because it didn't fit your lifestyle, or settled for a traditional system even though it only worked in the home, then we welcome you to try MobileHelp. Experience peace of mind in the home or on the go.

GET OUR SPECIAL OFFER NOW:

- ✓ **FREE EXPEDITED SHIPPING***
- ✓ **FREE ONE MONTH SERVICE***
- ✓ **50% OFF AUTO FALL DETECT***
- ✓ **plus FREE EQUIPMENT TO USE!***



Places where your Help Button will work	MobileHelp	Traditional Help Buttons
At Home	✓	✓
On a Walk	✓	✗
On Vacation	✓	✗
At the Park	✓	✗
Shopping	✓	✗

MobileHelp Features:

- Simple one-button operation
- Affordable service
- Amplified 2-way voice communication
- 24/7 access to U.S. based emergency operators
- GPS location detection
- Available Nationwide

OUR BEST OFFER EVER!
From **\$19.95***/month

MobileHelp

1-855-444-3698

*For a limited time - promotions available for select systems and subscription plans, please call for specific details. Offers are valid for new customers and for the first year of service and cannot be combined with any other offers. \$19.95 is the monthly subscription price for a MobileHelp Classic (at home only) system. There is a one-time \$49.95 processing fee to subscribe to the plan. Equipment shown is the MobileHelp 300 (at home and on the go) system available at a higher monthly cost. Most equipment is included at no cost while actively subscribing and must be returned upon cancellation. Free one month of service offer valid with purchase of Annual plan and includes month 12 at no additional charge. Refer to terms and conditions for specific details. Depending on the promotion chosen, you may receive an additional savings of \$5.00 off the \$11 retail price of Fall Detection service. After first year, Fall Detection pricing reverts to discounted price of \$9.95/month when combined with MobileHelp Connect Premium. Fall Detection does not detect 100% of falls. If able, users should push their help button when they need assistance. Fall detection is not intended to replace a caregiver. MobileHelp is a registered trademark, patented technology. Current GPS location may not always be available in every situation on the cellular network at all times. Expedited shipping offer is for Annual plans made prior to 3 PM EST Mon-Fri. Expedited shipping is standard 2-day - no deliveries on Saturdays/Sundays or to Hawaii or Alaska. Shipping delays may occur due to situations beyond our control. PF-SPAD205111658 BBNP-01045 Rev. 1

Custom Pull-Out Shelves for your existing cabinets and pantry.



50% OFF INSTALL!*

12 MONTHS NO INTEREST NO PAYMENTS*

Easy access, less stress, everything within reach.

ShelfGenie®
EVERYTHING WITHIN REACH™

a neighborly company

Call for Your **FREE** Design Consultation:

(855) 625-9032

*Limit one offer per household. Must purchase 5+ Classic/Designer Pull-Out Shelves. EOP 6/30/24. Independently owned and operated franchise. ©2024 ShelfGenie SPV LLC. All rights Reserved.

The Bath or Shower You've Always Wanted IN AS LITTLE AS A DAY



\$1000 OFF*

AND

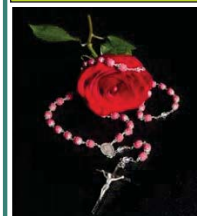
No Payments & No Interest For 18 Months**

OFFER EXPIRES 6/30/2024

BCI BATH & SHOWER
CALL NOW (844) 300-2419

*Includes product and labor; bathtub, shower or walk-in tub and wall surround. This promotion cannot be combined with any other offer. Other restrictions may apply. This offer expires 6/30/24. Each dealership is independently owned and operated. **Third party financing is available for those customers who qualify. See your dealer for details. ©2024 BCI Acrylic, Inc.

"God is Love" - 1 John 4:8



841 Main Street
Tewksbury, MA 01876
(978) 851-9103

Rosaries from Flowers

"Handmade from the Flowers of your Loved One"

www.rosariesfromflowers.com

AD SPACE AVAILABLE
617-779-3771

Pickering & Son

FUNERAL HOMES

Westborough Funeral Home
62 West Main Street • Westborough, MA
508-366-4458
www.westboroughfuneralhome.com

Upton Funeral Home
45 Main Street • Upton, MA
508-529-6992
www.uptonfunerals.com

David A. Pickering & Andrew D. Pickering, *Directors*

ART & FRAME
Emporium
Your design, print, frame &
art supply specialists... since 1982
508-366-5650
www.artandframeemporium.com

ATTY CAROLYN R. SPRING
Estate Planning and Elder Law
Westborough • 508-898-1835
www.cspringlaw.com
Mention this ad for 10% off services

www.EWTN.com
TV, Radio, Newspaper
www.GodANDCountryNOW.com
Vic@VicMelfa.org

AD SPACE AVAILABLE
617-779-3771

The Christensen Team
RE/MAX Executive Realty



Preben & Mary Christensen
508-868-5483



508-366-5475

Honesty, Integrity, Results!
Your local Real Estate Experts



Joanne Fontaine
508-479-9691



The Gardner Family
800-540-4993
www.CurryPrinting.com

Get started with
3 months free*



WeightWatchers
weightwatchersoffer.com/53

*With select plan purchase. Restrictions apply.



Designer Jewelers
18 Lyman Street
Westborough
Open Mon. - Sat.
Fine Jewelry • Watches
Jewelry Repair • Gifts for All Occasions
508-366-5512 • www.thedesignerjewelers.com

PAUL CASELLO
Quick Response to all Calls
ELECTRICAL SERVICES LLC
978-870-2111
CLEAN COURTEOUS AFFORDABLE
150 Milk Street, Westborough, MA 01581 • MA LIC #21083-A
SAME DAILY PRICE
7 DAYS A WEEK
Weekend And Evening Appointments Available

Connect Anywhere, Anytime.
Enjoy Free Internet Data on Your Mobile Devices with the Affordable Connectivity Program. You qualify if you receive:

- Medicaid
- Veterans Pension
- SNAP
- Survivors or Lifeline Benefits
- SSI
- Tribal Assistance Program
- WIC
- Housing Assistance

maxsip TELECOM
Get a subsidized 4G Android Tablet for \$20
CALL TODAY (888) 490-8957



Where You'll Find
Knowledge, Quality, & Value
Free Delivery
508-881-2660
134 Front St. Ashland
www.ashlandlumber.com

SALMON

Care & Support For You and Your Loved One



Beaumont at Westborough
1 Lyman St. Westborough, MA
508-366-4730
salmonhealth.com

"God is Love" - 1 John 4:8

PROTECT WHAT MATTERS MOST

Whether you are home or away, protect what matters most from unexpected power outages with a Generac Home Standby Generator.

SO MONEY DOWN + LOW MONTHLY PAYMENT OPTIONS

REQUEST A FREE QUOTE

CALL NOW BEFORE THE NEXT POWER OUTAGE

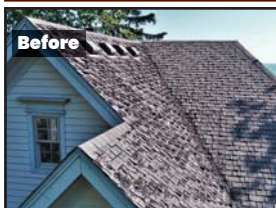
(617) 841-4985

*To qualify, consumers must request a quote, purchase, install and activate the generator with a participating dealer. Call for a full list of terms and conditions.



FREE
7-Year Extended Warranty*
A \$735 Value!

GENERAC



Make the smart and ONLY CHOICE when tackling your roof!

LIMITED TIME OFFER! SAVE!

UP TO
50% OFF
INSTALLATION

ERIEHOME
Expires 7/31/2024

FREE ESTIMATE 1.855.720.0765

MADE IN THE U.S.A.

New orders only. Does not include material costs. Cannot be combined with any other offer. Minimum purchase required. Other restrictions may apply. This is an advertisement placed on behalf of Erie Construction Mid-West, Inc. ("Erie"). Offer terms and conditions may apply and the offer may not be available in your area. If you call the number provided, you consent to being contacted by telephone, SMS text message, email, pre-recorded messages by Erie or its affiliates and service providers using automated technologies notwithstanding if you are on a DO NOT CALL list or register. Please review our Privacy Policy and Terms of Use at homeservicescompliance.com. All rights reserved. License numbers available at eriehome.com/erie-licenses/

