

ST. MARY'S PARISH

Corner of Main & Summer Streets, Shrewsbury, Mass. 01545 • Website: www.stmarysparish.org

LITURGICAL SCHEDULE

Mass

Saturday Vigil: 4:30 pm.

Sunday: 7:30 a.m., 9:00 am, 11:00 am
& 5:30 pm.

Weekdays & Saturday: 8:30 am.

Holy Days: 8:30 am., 12:00 pm. & 7:00 pm

Sacrament of Reconciliation

Saturday: 3:30–4:00 pm.; anytime by
appointment

Eucharistic Adoration

Tuesday: 6:00–9:00 pm, Church

Friday: 9:00–1:00 pm, Pastoral Ctr. Chapel

PARISH STAFF

Rev. Msgr. Michael F. Rose, *Pastor*

Rev. Javier Julio, *Parochial Vicar*

Philip E. Devine, *Deacon*

Jeannie MacDonough, *Principal*

Gina Kuruvilla, *Director of*

Religious Education & Youth Ministry

Kathy Canfield, *Gr. K–8 Rel. Ed. Coord.*

Richard Vacca, *Director of Liturgical Music*

Viola Jefferson, *Parish Nurse*

Juan David Parra, *Seminarist Intern*

CONTACT US

Pastoral Center 508-845-6341

School Office 508-842-1601

Religious Ed. Office 508-925-7801

Youth Ministry 508-925-7801

Parish Health Ministry..... 508-925-7647

Our Parish Mission

We, the people of St. Mary's, strive to be a community united with God, dedicated to continuing growth in knowledge and faith, giving witness to Christ through love, worship, education, and service. So that we may fulfill this mission and integrate spirituality with life, we shall reach out to all peoples within and beyond our faith community.



NEW PARISHIONERS: We are always happy to welcome new people into our parish family. Please contact the Pastoral Center to register or for more information.

BAPTISMS: Baptisms at St. Mary are held on the first and third Sundays of the month at 12:30 PM. Parents may also schedule to have their child baptized during one of the Sunday Masses. A preparation session for parents preparing for the baptism of their first child is held on the second Monday of the month in the Pastoral Center. Call the Pastoral Center for more information.

MARRIAGES: The policy for the Diocese of Worcester requires a period of one year preparation for the Sacrament of Marriage, which includes sessions with the parish priest and participation at either the pre-cana conferences or the Engaged Encounter weekend. Contact one of the priests for arrangements.

PASTORAL CARE: Arrangements for the reception of the Sacraments for homebound parishioners can be made by contacting the Pastoral Center. Please also notify the Pastoral Center when a parishioner is in the hospital or otherwise confined. Emergency sick calls at anytime.

PASTORAL COUNCIL

Marilyn Blanchard 508-845-1567
Jean Campaniello 508-842-8288
Robert Doiron 978-568-3696
Jim Farrell 508-330-6153
Lynne Grden 508-363-3636
Samer Hannoush 508-615-2760

Matthew Hastings 508-845-5012
Silvester Noronha..... 508-925-4581
Kelly Paulina..... 774-275-1911
Sheila Seed 508-842-6326
Robert Terry 508-798-8734
Susan Zybert 508-842-7554

COUNCIL OF MINISTRIES

Finance: Maria Lemieux..... 508-845-8732
Respect Life: Kurt Brenner..... 508-842-0322
Seniors Jet Set: Evelyn Baroni..... 508-845-3511
Social Justice: Gina Kuruvilla..... 508-925-7801
Outreach: Mary Daly..... 508-845-6819
Stewardship: Kelly Paulina 774-275-1911

MASS INTENTIONS

Date	Time	Intention
Saturday, Aug. 17	8:30 am	† Ruth M. Sawtelle By the family
	4:30 pm	† Anna Scribner By the family
Sunday, Aug. 18	7:30 am	Mr. and Mrs. A. Balthazar By their son
	9:00 am	
	11:00 am	† Danielle Simas By the family
	5:30 pm	† Mary Longo By the family
Monday, Aug. 19	8:30 am	† Ernest Virgilio By the family
Tuesday, Aug. 20	8:30 am	† Alfred Kerekon By the family
Wed., Aug. 21	8:30 am	† Eilyana Moynihan Turpin Birthday Remembrance By the family
Thursday, Aug. 22	8:30 am	† Evelyn Wolfe By a friend
Friday, Aug. 23	8:30 am	† Jeri Downer Dorffeld By the family
Saturday, Aug. 24	8:30 am	† Robert Labonte , 4th Anniversary by the family
	4:30 pm	† Diane O'Leary By the MacDonough family
Sunday, Aug. 25	7:30 am	† Antonio Sebastio By Maria Gulino
	9:00 am	† Eugene Costa , Birthday Remembrance, by the family
	11:00 am	† Jose & Theresa Fernandez, Manny Chaves, Alipio Martins, Hilda Corriea, Armando Sousa, Filomena Sousa, Paul Dirth, Ruth Foley, Pam Cawley, Carol Singh and Anne Dealy By Joe and Elisa Sousa
	5:30 pm	† Gregory Benoit 1st Anniversary by the family



PRAY FOR . . .

Repose of the soul of Ally Kostial and Lisa Nguyen, and God's peace for their families; a young woman, for God's guidance in her future

plans; safe travel for Elizabeth and Lee, and their group traveling to Ireland; Marissa to have good test results; a successful class for B; the resolution of a home sale for a couple; WW's to receive an accurate diagnosis for a thyroid issue; safety for a long-haul driver; safe travel for several; CM to have ease; increased confidence for C; all those suffering with a cancer diagnosis; Shannon and Ed; Elaine's potential transition; Sarah's full healing; Edison; Bob; a family during a very difficult time; Stan; all those affected by natural disasters; parish participation aiding the Mustard Seed, St. Anne's Human Services and Donald Aicardy's Eagle Scout project; and increased action to build peace and increased understanding.

Continued prayers for: Michael Brekka, Maureen O'Connor's health; Leslie Storrs and the recipient of her kidney; Ben K.; Sam; David; Julie; Bett; FT; Jess; Chuck; Caleb; Caleb W.; Chuck; Rosata; AS; Maureen; Leslie; Michael Brekka; Matt; Rob; Mel; Alex; Anthony (deployed); Carly; Peter James; Marge; MaryLou; Jan; Nancy; Tm; Effie; Dani; Sr. Marion; Linda A.; Linda; Christine; Jim; Regina; W's daughter; Andy; Kathleen; Richard; Stanley; John; Jacob; Sarah's pregnancy; Doug; Sue; Harry; Maddie; Chico; Cindy and those with no one to pray for them.

Thanksgiving for: Linda's greatly improved health; Connie's and Elaine's generosity; M's kindness; Bonnie's improved cancer diagnosis; Birthdaywishes.org and Puttforpresents.org and the over 300 birthday celebrations, dignity, and joy they provide yearly to homeless children; Katie's aid; Maureen's presence; the Ursuline order; a successful presentation; and all answered prayers.

Prayer Line: Tracy at 508-450-0137

*Rest in Peace*

Betty Jane Hally
Gerald Nugent

St. Mary Parish Presents British Landscapes

A Trip To England, Scotland & Wales in 2020
June 25—July 4, 2020

Ten Days—Eight breakfasts & four dinners
With Collette Travel

Brochures available in the sacristy and Pastoral Center
Call or see Fr. Mike for more information

Liturgical Ministry Schedule August 24-25

Date	Lector	Eucharistic Minister	Server	Sacristan
Saturday 4:30pm	T. Pitney	M. Damico, C. Engdahl, S. Gallerani, S. Goodwin, M./M Nelligan, S. Seed	J. Karam, N. Podlipec	J. Nelligan
Sunday 7:30am	N. Hughes	M. Blute, M. Gulino, M/M Holland, T. Keegan, G. McNamara, A. Noone	P. Hastings, R. White	M. Gulino
Sunday 9:00am	M. Dupont	P. Ahearn, K. Contreras, S. Landry, B. Randazzo, J. Travers	S. Boyle, N. Hughes, B. Kerekon A. Kerekon	S. Zybert
Sunday 11:00am	M. Page	S. Howard, E. Korpi, J. McAdam, J. McDonald, M. Minnucci, E. Page, L. Shuba M. Smith, J. Sousa	M. Johnson, J. Sweetwood	S. Berkowitz
Sunday 5:30pm	A. Figueiredo	V. Eda, J. Garcia, R. Lopez, M.L. Nevins, J. Srnka	T. Buricatu, E. Ferguson, N. Srnka	A. Figueiredo



CONNECT WITH US!

Subscribe to flocknote and receive news & updates from St. Mary Parish via text message or email.



3 WAYS TO SUBSCRIBE

- 1** Visit the parish website @ stmarysparish.org/flocknote
- or
- 2** Text **STMARYPARISH** to **84576** from your phone
- or
- 3** Scan the QR code



**ST. MARY SCHOOL
CLASS OF 2020**



Pancake Breakfast

Sunday, September 8th, 2019

8:00 a.m. – 11:00 a.m.

St. Mary's Church Parish Hall

All are welcome to enjoy a wonderful breakfast with family and friends and some of your favorite Disney characters. We appreciate your generous donations. All donations will benefit the 8th Grade Trip to Washington, D.C. in Spring 2020.

This event kicks off final preparations for the Saint Mary's Family Festival, scheduled for September 13-15th

**RCIA – The Rite of Christian
Initiation of Adults**



If you or someone you know is interested in becoming Catholic or if you are a Catholic who would like to complete your initiation through the sacraments of Confirmation and/or Eucharist, the Rite of Christian Initiation (RCIA) can help. The RCIA forms adults in the Catholic faith and prepares them for the sacraments of initiation. For addition information please call Msgr. Mike at the Pastoral Center at 508-845-6341.

August

Sunday, August 18

8:00 Uniform Swap-Hall
12:30 Baptisms-Church
7:00 Family Festival Meeting-Gathering Space

Monday, August 19

9:15 Weight Training-Large Meeting Room
7:00 Cub Scout Pack Meeting-Hall

Tuesday, August 20

6:00 Eucharistic Adoration-Church
6:00 Daughters of Isabella-Large Meeting Room

Wednesday, August 21

5:45 Gentle Yoga-Large Meeting Room

Thursday, August 22

9:15 Weight Training-Large Meeting Room
7:00 Boy Scouts-Hall

Friday, August 23

9:00 Adoration of the Blessed Sacrament-Chapel
7:00 Middle School Catechist Meeting-Large Meeting Room

Saturday, August 24

8:00 Uniform Swap-Hall

Sunday, August 25

8:00 Uniform Swap-Hall
11:00 Middle School Catechist Meeting-Large Meeting Room
5:30 Eastpoint Services-Large Meeting Room

"Lord, teach us to step outside ourselves. Teach us to go out into the streets and manifest your love."
~Pope Francis



Please help support evangelization programs...
legacyofhope.worcesterdiocese.org

Light of the World

LIGHT OF THE WORLD RETREAT WEEKEND

at **ST. MARY'S PARISH**

MARK YOUR CALENDARS AND SAVE THE DATES

NOVEMBER 15-18, 2019



Saint Mary School Registration and Summer Tours

Saint Mary School is accepting applications for our Preschool, Kindergarten, and Grade 1 through 8 classrooms for the 2019 – 2020 school year.

Schedule a tour to see how Saint Mary School is making a difference for our students, our community and our world through our commitment to faith, academic excellence and service.

Our After-School Program is available for Kindergarten through Grade 8 students from 2:30 – 5:30 pm.

Saint Mary School welcomes students and families from all faiths and ethnic backgrounds.

To schedule a tour during the Summer months, please contact our Admissions Director, Cheryl Dolan at Cheryl.Dolan@stmarysparish.org or 508 842-1601.

Visit our website to complete an online application and learn more about Saint Mary School:
<https://school.stmarysparish.org/application-package>

Cub Scout 158 Bike Rally August 25th, 2:00-4:00 PM



Calling families of boys entering kindergarten through 2nd grade. You are invited to visit Cub Scout Pack 158 on Sunday, August 25th, from 2-4 PM at St. Mary's Church Parking Lot for our Bike Rally. We will keep the kids

busy and be available to explain scouting, our group, our events and schedule of meetings. We will gladly answer any questions you may have. Even if your child does not ride, come see what scouting has to offer.

For more information, contact Maggie Riani, CubMasterMaggie@gmail.com.

JET SET—Our next trip will be on September 4th, and it will be a Narragansett Light House Cruise. Lunch is either scrod or chicken at the Quonset followed by a narrated tour including 10 lighthouses and a Newport Harbor Cruise. The cost will be \$91 and reservations must be received by August 10th by calling Evelyn at 508-845-3511.

Promise to Protect—Pledge to Heal

If you have been abused or victimized by someone representing the Catholic Church, please believe in the possibility for hope and help and healing. We encourage you to come forward and speak to Judith Audette, the Victim Assistance Coordinator who is available to obtain support for your needs, to help you make a formal complaint and to arrange a personal meeting with the bishop or his representative, if you desire. The direct and confidential phone number is 508-929-4363.

CCD REGISTRATION FOR 2019-2020 SCHOOL YEAR



If you have already registered your child for CCD for the upcoming school year, *Thank you!*

For those of you who have not, please register for classes online by logging on to our website www.stmarysparish.org and selecting "Youth" in the drop down menu under "Religious Education."

Registration is ongoing. Classes will form soon.

Catholic School students preparing for the sacraments of Eucharist/Reconciliation or Confirmation, in Grades 2, 9 and 10 starting in the fall of 2018 **also need to register** online. Thank you!

Religious Education Teachers urgently needed for Grades 9, 8, 7, 4, 3, and 1.

High School and Middle School classes meet twice monthly; Elementary School classes meet weekly.

Please consider volunteering your time to share your faith with the young children of our parish.

If you think you may be interested please contact Kathy Canfield at Kathy.canfield@stmarysparish.org or 508-925-7801 ext 313 or Gina Kuruvilla.

The Daughters of Isabella Adelphe Circle 1089, a Catholic women's charitable organization invites you to join us for an open meeting on Tuesday, August 20, 2019 6:00PM at St. Mary's Church* 640 Main St, Shrewsbury. Come see what we are all about! Light refreshments will be served.

We will meet in the Large Meeting Room. For additional information please contact one of the members below:

Susan Astrella—astresm@msn.com

Marilyn Vallejo—marval714@aol.com



St. Mary's IHN Week

THANK YOU
THANK YOU
THANK YOU

Thank you so much to everyone who contributed to our IHN ministry by taking our "Home" tags. Your generosity has allowed us to provide supplies to the IHN guests for our two weeks of service this year. St. Mary's IHN

Group will be volunteering at the IHN house during the week of August 18th-25th. We will be covering the Evening Shift from 5:30-9:00pm and the Overnight Shift from 9:00pm-6:30am. If you are interested in taking a shift or learning more about IHN, please email Terry Waite at twait@townisp.com or Bridgid Rubin at rubin@townisp.com. Thank you.



ST. MARY'S FAMILY FESTIVAL

SEPTEMBER 13 - 15, 2019

Weekly Update

Sunday, August 18th

Children's Activities

Visit the Children's Activity Tent for fun activities and crafts for all ages! Activities include:

- The Little Pink Nail Shoppe
- Face Painting
- Cookie Creations
- Caramel Apples
- Pucker Powder ~ Edible sand art
- Ornaments
- Pumpkin Painting
- Sand Art
- ...and much more! Visit the parish website for a full list of activities!

Coloring Contest

This year's themes is "**Family Festival Favorites**". Draw and enter your favorite thing about the festival!

- Children 12 & under (one entry per child)
- Drop off your entry during the Festival in the Children's Activity Tent by Saturday, September 14th @ 6:00PM.
- Include full name, age and phone number on back of drawing.
- A prize will be awarded for ages 4 & under, 5 - 6, 7 - 8, and 9 - 12 age groupings.

Basket Raffle Donations

We are looking for parishioners & school families to donate items or cash towards the annual Basket Raffle. This years' themes include Sports, Arts & Crafts, Fall, Spa, and Kitchen. For information or any questions, please contact Simone Brucato @ simone.brucato@gmail.com



Follow us on Facebook!
@StMarysShrewsburyMA

Become a Family Festival Sponsor!

We would love to have you as a Sponsor of the Family Festival by advertising your business! Know a business owner? Please share this opportunity with them.

Doctorate Sponsor - \$1,500 +

- Name mention in pre-event promotional efforts
- Named Sponsor for a major Festival area
- Sponsor name & logo on large banner in prominent Festival area/ event
- Logo and link on Facebook and webpage

Master Sponsor - \$500 - \$1,499

- Name mention in pre-event promotional efforts
- Sponsor name & logo at a Festival in inflatable/ game/ area
- Logo and link on Facebook and webpage

Graduate Sponsor - \$250 - \$499

- Name mention in pre-event promotional efforts
- Sponsor name & logo on the Festival Sign Wall
- Logo and link on Facebook and webpage

Sign Wall Sponsor - \$50 - \$249

- Show your support and promote your business on the Festival Sign Wall located in the Food Court!

For more information:

stmarysparish.org/sponsors

It's Not Too Late!

Consider joining the Family Festival Committee - there are dozens of ways you can get involved and there is no doubt we have a place for you! Our next committee meeting is this Sunday, August 18th @ 7:00 PM in the Gathering Space.

www.stmarysparish.org

This Space
is Available



The WILLOWS
PREMIER RETIREMENT COMMUNITIES
FOR ACTIVE ADULTS



508-366-4730
www.SalmonHealth.com



International House
of Pancakes
70 Boston Post Road
Shrewsbury, MA 01545
508-791-9328



Visit Boucher's
"You'll Feel Better"

Celebrating 45 Years!

Bibles • Good Music • Books • Gifts
Cards • Jewelry • DVDs • Church Supplies
"Gifts for All Sacramental Occasions"

Boucher's
Good Books & Gifts
254 Lake Ave., Worcester
(508) 755-4516
10% off with this ad

Philip P. Massad
Mover

*FIND US IN THE
NYNEX
YELLOW PAGES*

754-1225
752-0100

MARIA LEMIEUX, CPA, MST

Tax Planning and Preparation

298 Boston Tpk., Ste. 8
Shrewsbury, MA 01545

Individual • Corporate
Partnership • Fiduciary

Phone (508) 849-1967

Fax (508) 849-1968

Email: lemieuxcpa@aol.com

J. J. BAFARO INC.

**PLUMBING, HEATING, AIR CONDITIONING
SPRINKLER CONTRACTORS**

**9-13 Winter Street
Worcester, MA 01604**

ML 7751

Tel. 757-7429

Paul A. Cerrone
CERRONE, GRAHAM
& SHEPHERD, P.C.

*Certified Public Accountants
and Business Advisors*

446 MAIN STREET, 10th FLOOR
WORCESTER, MASSACHUSETTS 01608
(508) 754-8512 & (508) 845-7600

• Accounting • Auditing • Bookkeeping
• Business & Personal Taxes

WWW.CGSCPAS.COM

Paul Palumbo
ELECTRIC

Residential & Commercial

Wiring & Alarms

Senior & Veteran Discount

508-277-1529

508-865-3258

MA #A11543



370 Plantation Street, Worcester, MA 01605

754-0486

*Committed Every Day to Caring
Pre-need Plans and Trust Available*

**ST. PIERRE &
ST. PIERRE P.C.**

ATTORNEYS AT LAW

(508) 842-1000

291 GRAFTON ST.
SHREWSBURY

*Full Service
Law Firm*

NEVER MISS A BULLETIN !

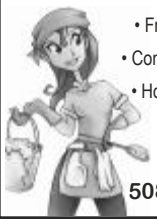
Sign up to have our weekly parish bulletin
emailed to you at www.parishesonline.com



RIZIA'S HOUSE CLEANING

www.riziashousecleaning.com

- Free Estimates
- Competitive Prices
- Homes / Offices



508-864-9175

LAKE SIDE BARS & GRILL

97 Boston Turnpike
Shrewsbury, MA

508-425-3543

www.lakesideshrewsbury.com

RICHARD'S CAR WASH

(508) 755-0131

New Typhoon! Open 24 Hrs
Self Serve Automated Touch Free Carwash
All Cloth Tunnel Wash
8 Coin-Operated Vacuums
Coin-Operated Shampoo Machine
Coin-Operated Fragrance Machine
2 Self Serve Bay Washers

307/309 BOSTON TURNPIKE, RTE 9
SHREWSBURY, MA • (508) 755-3015
WWW.TURNPIKEAUTOBODYINC.COM

TURNPIKE

AUTO BODY, INC.

Unibody Frame Repair Specialists
Featuring: Laser Beam Technology
Complete Collision Work
Licensed Insurance Appraisals
Welding • Auto Painting
Total Wheel Alignment
Custom Paint & Matching

Rands AUTOMOTIVE CENTER

Licensed Emission Repair Facility
MA Inspection Station • All Makes & Models
Brakes/Exhaust/Tune-Ups

508-845-9850

Rte. 140 North of Rte. 20,
185 Memorial Dr., Shrewsbury
LOCATED ON THE SHREWSBURY-GRAFTON LINE
WWW.RANDSAUTOMOTIVECENTER.COM



THE
RESIDENCE
at Orchard Grove

*Independent, Assisted
& Memory Care Living*

Shrewsbury, MA | 508-841-5735

THRIVE REAL ESTATE

Maribeth McCauley Lynch
Broker
Real Estate Specialist



508-641-9323
11 Maple Ave., Shrewsbury

www.thriverealtors.com



WE'RE HIRING AD SALES EXECUTIVES



- Full Time Position with Benefits
- Sales Experience Preferred
- Paid Training
- Overnight Travel Required
- Expense Reimbursement

CONTACT US AT

careers@4LPi.com • www.4LPi.com/careers

THIS SPACE IS
AVAILABLE



websterfive

800.696.9401 | web5.com

WEBSTER | DUDLEY | OXFORD
AUBURN | WORCESTER | SHREWSBURY



SUNNYSIDE



Since
1923

HOLDEN

508-829-4333

Sales • Service • Parts
Body Shop • Quick Lane
www.sunnysideford.com

774-614-1165
WE BRING THE PARTY TO YOU.

THE KONA ENTERTAINMENT VEHICLE
is a one-of-a-kind party on wheels
that we drive right
to your event.



SHAVED ICE WITH
OVER 2 DOZEN
FLAVORS.
FUNDRAISERS
BIRTHDAY PARTIES
EVENTS

REMAX Vision

Alison Zorovich

Broker-Associate/REALTOR®
Accredited Staging Professional

(508) 335-7775

AtoZRE@gmail.com

www.AlisonZorovich.com

"For all your real estate needs, from A to Z"

Each Office is Independently Owned and Operated



NEVER MISS A BULLETIN !

Sign up to have our weekly parish bulletin
emailed to you at www.parishesonline.com



AVAILABLE
FOR A LIMITED TIME

ADVERTISE YOUR
BUSINESS HERE

Contact **Kathleen Zechello** to place an ad today!
kzechello@4LPi.com or (800) 477-4574 x6415

PROTECTING SENIORS NATIONWIDE
MEDICAL ALERT SYSTEM



\$29.95/MO
BILLED
QUARTERLY

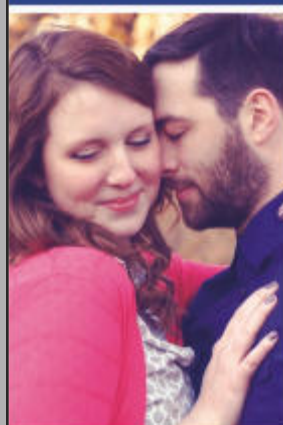
PLUS
SPECIAL
OFFER

CALL NOW!

1.877.801.7772

WWW.24-7MEDALARM.COM

catholicmatch®
Massachusetts



CatholicMatch.com/MA



Susan Kronlund Realtor® / Parishioner

I can OPEN doors for you!

(508) 320-8797

181 Main Street • Shrewsbury
www.SueSellsProperties.com



PICKLE HAUS DELI

SANDWICHES & CATERING

276 W. Main St. Northboro

508-393-6760

www.picklehausdeli.com
Parishioner



• Assisted Living
• Long Term Care & Rehabilitation
• Adult and Pediatric Hospice & Palliative Care
• Education Resource Center
Providing exceptional care and service. Giving residents, families and visitors the peace of mind they need
Notre Dame Health Care Center, Inc.



*The Key
To Your
New Home*



Mary Ann Barry
REALTOR®

508-330-7194
barrymaryann8@gmail.com
www.MaryAnnBarry.com

PROSCAPE

508-282-0331

Shrewsbury
Residential & Commercial



www.proscapecompany.com



**Home • Auto
Life • Business**

508.842.8822

543 Main St., Shrewsbury

www.danielsinsuranceagency.com



Connecting to What Matters

That's the
Benchmark
Difference.

Call today to learn
about Assisted Living
and our Mind & Memory
approach.

508.845.2100



311 Main Street, Shrewsbury MA
ShrewsburyCrossings.com

NATIONAL GLASS WORKS INC.

508-753-7209

372 Park Avenue
Worcester



"Building the Pride Inside Since 1983"
Gymnastics lessons "Walkers" & up!
Birthday Parties

Free Trial Class!

508-792-1551

574 Lake Street, Shrewsbury, MA
www.gymnasticslearningcenter.com

GOD'S LITTLE CHILDREN PRESCHOOL

"Building a Foundation of Knowledge Within"

Preschool Programs
Kindergarten: 1/2 or Full Day
Full Day & Part-time Day Care

The Only Nationally Accredited
Preschool in Shrewsbury!

508-792-3535

574 Lake Street, Shrewsbury, MA

HELP PROTECT YOUR FAMILY & HOME

CALL NOW!
1-888-862-6429



HOME SECURITY TEAM

WELCOME!
There's no place finer than the

Boulevard Diner

SINCE 1936

Member of the

National Register of Historic Places.

- Worcester's most spectacular diner
- Specializing in Italian and American dishes
- Breakfast served all day
- Take out also available

508.791.4535

DINER OPEN 24/7

155 Shrewsbury St.,
Worcester

Thank you for your patronage

— James George

MONTI'S PIZZA PLUS

369 West Main St. • Northboro
Take-Out Pizza • Subs
Pockets • Salads

Try Our Fresh Homemade Pasta
Party Platters



PHONE AHEAD FOR
FAST SERVICE

393-6113

CHARLTON MANOR

BEAUTIFUL RETIREMENT HOME

The Affordable Quality Choice

Trust us to save you time & money

508-248-5136 • 978-314-2290

www.charltonmanorresthome.com

12 Town Farm Road • Charlton, MA 01507

Shrewsbury Children's Center, Inc.

138 North Quinsigamond Ave.
Shrewsbury, MA 01545

508-755-3922

Fax 508-755-4245

www.shrewsburychildrens.com

SERVING FRESH FOOD,
FULL MUGS AND FUN TIMES!



(508) 842-2584

www.deanparkgrillpizza.com

749 MAIN STREET, SHREWSBURY, MA

Tier One Electrical

508-572-5722

TierOneElectrical@gmail.com

841 Worcester St.

Suite 351

Natick, MA 01760



Mary Surette

Realtor

508-635-6694

508-450-2023

6 Park Ave. Worcester, MA
www.marysurette.com



Shrewsbury

Nursing and Rehabilitation Center

Offering Short Term Rehab

Long Term and Respite Care • Memory Care

www.shrewsburnursing.com

(508) 845-6786



Britton-Shrewsbury Funeral Home
648 Main Street
Shrewsbury, Massachusetts 01545

Shannon M. Henry
(508) 845-6226

www.brittonfuneralhomes.com



**\$1750 for a Pair of Blue Tooth
State-of-the-Art Hearing Aids**
\$3200 Pair of Blue Tooth State-of-the-Art
Lithium Rechargeables



Why Pay More?
**Complimentary
Evaluations**

26 West Boylston St.
Suite 5
West Boylston

774.327.3451

HearingYourWay@gmail.com • HearingYourWay.com

MARIA SMITH

Realtor GRI, CBR, SRES
Notary Public | ReNet Member

508-845-9974

415 Boston Turnpike, Suite 308 B
Shrewsbury, MA 01545

E-mail: mmsreal@aol.com

www.mariasmithrealty.com

Fax: 508-845-9975

Parishioner over 50 years.

Maria Smith
REAL ESTATE

