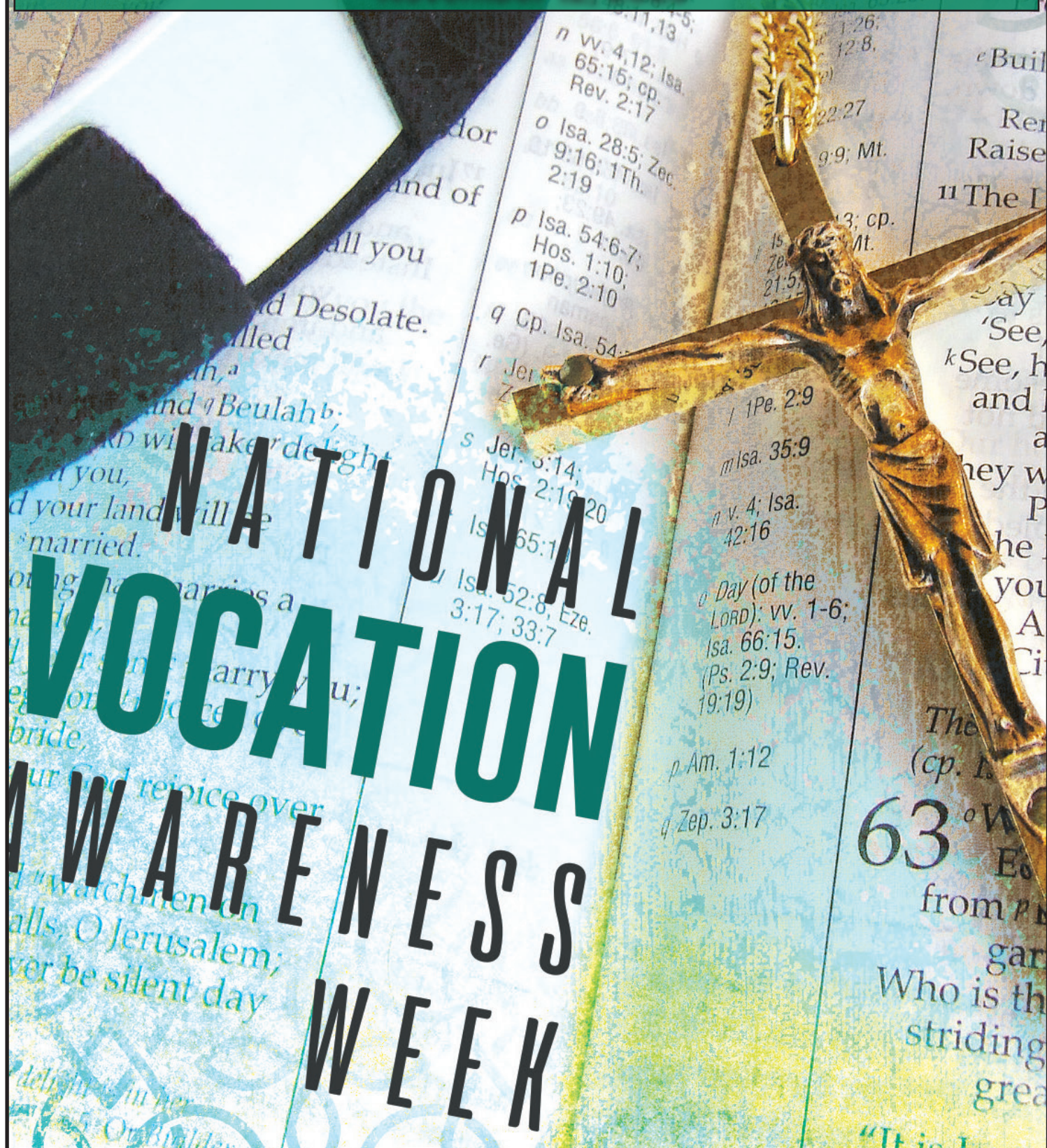


**St. Peter Parish, Douglas**  
**Parroquia San Felipe de Jesús, Fennville**  
A Catholic Community of Love, Faith and Hope  
November 12, 2023





# REDEDICATING

OUR CHURCH ✠ OURSELVES

## Parish Staff

**Pastor:** Fr. Evelio Ramirez  
fr.ramirez@stpeter-douglas.org  
**Pastoral Associate:** Rick Hardy  
rick.hardy@stpeter-douglas.org  
**Business Administrator:** Ralph Hensley  
ralph.hensley@stpeter-douglas.org  
**Office Administrator:** Cecilia Garcia  
ceci.garcia@stpeter-douglas.org  
**Director of Faith Formation & Evangelization:**  
Alisha Giles, alisha.giles@stpeter-douglas.org  
**Director of Music:** Caitlin Cusack  
caitlin.cusack@stpeter-douglas.org  
**Wedding Coordinator:** Barbara Conklin  
barbara.conklin@stpeter-douglas.org  
**Pastoral Care:** Marianne Hoffman  
marianne.hoffman@stpeter-douglas.org  
**Sacristan:** Nancy Maslanka  
nancy.maslanka@stpeter-douglas.org  
**Pastoral Council:** Pastoral.Council@stpeter-douglas.org  
**Finance Council:** Finance.Council@stpeter-douglas.org

## Readings for the week of November 12

**Sunday: 32nd Sunday in Ordinary Time,** Wis 6:12-16/Ps 63:2, 3-4, 5-6, 7-8 (2b)/1 Thes 4:13-18 or 4:13-14/Mt 25:1-13

**Monday: St. Frances Xavier Cabrini, Virgin,** Wis 1:1-7/Ps 139:1b-3, 4-6, 7-8, 9-10/Lk 17:1-6

**Tuesday:** Wis 2:23—3:9/Ps 34:2-3, 16-17, 18-19/Lk 17:7-10

**Wednesday: St. Albert the Great, Bishop and Doctor of the Church,** Wis 6:1-11/Ps 82:3-4, 6-7/Lk 17:11-19

**Thursday: St. Margaret of Scotland; St. Gertrude, Virgin,** Wis 7:22b—8:1/Ps 119:89, 90, 91, 130, 135, 175/Lk 17:20-25

**Friday: St. Elizabeth of Hungary, Religious,** Wis 13:1-9/Ps 19:2-3, 4-5ab/Lk 17:26-37

**Saturday: The Dedication of the Basilicas of Sts. Peter and Paul, Apostles; St. Rose Philippine Duchesne, Virgin,** Wis 18:14-16; 19:6-9/Ps 105:2-3, 36-37, 42-43/Lk 18:1-8

**Next Sunday: 33rd Sunday in Ordinary Time,** Prv 31:10-13, 19-20, 30-31/Ps 128:1-2, 3, 4-5 (see 1a)/1 Thes 5:1-6/Mt 25:14-30

## We remember in prayer...

Al & Mary Ellingsen	Don Karaus	Janet Schneider	Lynne Adamczyk	Saul Suarez, Jr.
Ann Marie Sevic	Don Wobith	Jeff Rissover	Lynn Dixon	Stacey Wasilevich
Annette Simaz	Dorothy Lockwood	Jeff Torrell	Madison McAllister	Stephen Marsh
Bertha Denemy	Fr. Don Klingler	Jeffrey Wasilevich	Marian Hagenaur	Stephen & Marie Johandes
Bill & Toni Alwin	Fr. Fabio Garzon, VF	Jerry Nielson	Mary Ann Skaja	Steve Sessions
Billy Pringle	Joann Otlewski	Jessica Neely	Michael DeRosa	Steve VanHoof
Brian Sessions	Fr. John Flynn, OSA	Joe Schalte	Mick Wenlock	Terry Hemmeke
Candi Schmuck	Frances Byk	John Vermulen	Paul Vermuelen	Teil Lindgren
Carol Powers	Heather Botz	Karen Martin	Paula Glennie	Vicky Zeman
Chad DeWitt	Heidi Ann Hebrank	Kathy Drummett	Patrick Dargis	and all our parish family and friends who need continued
Dcn. Tony Nethercott	Isa Rodriguez-	Laura Falk	Randy Reimers	
	Kupres	Libby Westrate	Regina Johandes	
	Janet Fahey	Lorrie Gaunt	Rob Munski	

*prayers. The group will continue to pray for your request until they hear differently from you.*



## Mass Intentions

### Saturday, November 11

5:00pm Ron & Carol Powers by Jim & Marianne Hoffman

### Sunday, November 12

8:00am † Richard Miles by St. Peter Parish

10:30am † Jackie Diaz by Kate Godwin

### Monday, November 13

8:30am † Camile Uryga by Andrew Uryga

### Tuesday, November 14

8:30am In honor of all Carmelite Saints by Lay Carmelites of St. Peter Parish

### Thursday, November 16

8:30am In honor of all deceased Carmelites by Lay Carmelites of St. Peter Parish

### Friday, November 17

8:30am † Jeffery Dixon by Katie Dixon

### Saturday, November 18

5:00pm † John Sexton, Sr. by The Family

### Sunday, November 19

8:00am † Don & † Sylvia Scurio by Jim & Marianne Hoffman

10:30am † Bonnie Tolson by Harry & Dorothy Tolson



## SENIOR LUNCH

### Thursday, November 16

A traditional Thanksgiving meal will be served. There will be turkey, mashed potatoes, gravy, dressing, cranberry relish/sauce, cooks' choice vegetable, and rolls. The dessert is pumpkin pie with whipped cream and assorted contributions from our volunteers. Next month's Senior Lunch will be moved to December 14. Mark your calendars. Thanks!

## THIS WEEK IN OUR PARISH

### SUNDAY, 11/12

8:00- Noon...K of C Pancake Breakfast

8:00am...Mass

9:10am-10:20am...Family Faith Formation/CGS

10:30am...Mass-Baptism

### MONDAY, 11/13

8:30am...Mass

### TUESDAY, 11/14

8:30am...Mass

9:30-11:00am...Open Vessels

5:00-8:00pm...Eucharistic Exposition

### WEDNESDAY, 11/15

No Mass

### THURSDAY, 11/16

8:30am...Mass

Noon...Senior Lunch

### FRIDAY, 11/17

8:30am...Mass

9:00am-Noon...Eucharistic Exposition

### SATURDAY, 11/18

8:00am-10:00am...Catholic Men's Fellowship

1:00pm...Wedding

3:30pm-4:30pm...Reconciliation

5:00pm...Mass

### NEXT SUNDAY, 11/19

8:00am...Mass

10:30am...Mass

## Save on your taxes and help St. Peter!

The Catholic Foundation of Southwestern Michigan (CFSM) was established by the Diocese of Kalamazoo to provide parishes with long-term funding. St. Peter has its own fund at the CFSM.

*There are many ways you can support the St. Peter Parish Fund!*

### Gifts of Stock

Do you have stock that has appreciated and want to avoid capital gains? Donate your stock to the St. Peter Parish Fund and maximize your charitable deductions. If you have stock you can deduct the entire market value of the stock as a charitable deduction by donating the stock directly to CFSM (if you itemize deductions).

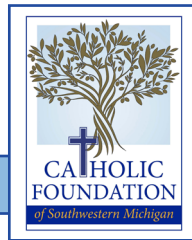
### Charitable Rollovers from an IRA

If you have assets in an IRA, or, you don't deduct charitable gifts, you can benefit the most from an IRA rollover. Charitable IRA rollover distributions count toward required minimum distributions. If you are 70 1/2 or older your IRA may be used as a convenient, tax-free way to make gifts up to \$100,000, while satisfying required minimum distributions (RMD)!

### Donor Advised Funds

With this technique, you can make a large contribution in one tax year to establish or add to a donor-advised fund. If the gift is large enough, you may be able to itemize deductions that year. In subsequent years, when your deductible expenses are not large enough to itemize, you can ask the donor-advised fund administrator to make a distribution to a favorite charity, thereby continuing your support to it. Donor-advised funds are relatively inexpensive to establish and maintain.

*You can also donate with a credit card on-line at  
[catholicfoundationswmi.org](http://catholicfoundationswmi.org)*



*For more information, contact  
Keith Tharp at [ktharp@diokzoo.org](mailto:ktharp@diokzoo.org)  
or (269) 349-8714 ext. 1351*

[CATHOLICFOUNDATIONSWMI.ORG](http://CATHOLICFOUNDATIONSWMI.ORG)



# ADVENT



**CANDLES \$5.00 PER BOX**

©LPI

Pick up candles for your Advent wreath (3 purple, one pink) in the Gathering Space or Parish Office. Advent begins Sunday, December 3.

Saint Peter	Mass Schedule	San Felipe de Jesús	Mass in our Collaborative
100 Saint Peter Drive Douglas, MI 49406 <a href="http://www.stpeter-douglas.org">www.stpeter-douglas.org</a> Parish Office Hours: M-F 8:30am-2:00pm 269-857-7951 <a href="mailto:facebook@stpeterdouglas">facebook@stpeterdouglas</a> Both Sunday Masses are live streamed on our facebook page.	<b>Sunday:</b> 8:00am & 10:30am <b>Monday, Tuesday, Thursday, Friday:</b> 8:30am <b>Wednesday:</b> No Mass <b>Saturday:</b> 5:00pm Sacrament of Reconciliation 3:30-4:30 or by appointment	5586 117th Ave Fennville, MI 49408 <a href="http://www.sanfelipe-fennville.org">www.sanfelipe-fennville.org</a> Parish Office 269-561-5029 <a href="https://facebook.com/parroquia.s.dejesus">facebook.com/parroquia.s.dejesus</a> <b>Parish Coordinator</b> Joe Marble 269-501-9865 <a href="mailto:joe.marble@stpeter-douglas.org">joe.marble@stpeter-douglas.org</a>	<b>San Felipe, Fennville</b> <b>Sunday:</b> 12:30pm <b>Thursday:</b> 6:30pm  <b>St. Basil, South Haven</b> <b>Saturday:</b> 5:00pm 7:00pm (en Español) <b>Sunday:</b> 9:00am & 11:00am <b>Monday:</b> No Mass



**Rick Hardy**  
Pastoral Associate

## Do They Know They Are Welcome Here?

In our last exciting episode, which I wrote from the “other” West Coast, I introduced the most controversial questions that arose in the Synod of Bishops that closed recently. The level of controversy was measured by the extent of the negative votes. In the Synod’s reporting document, each paragraph had to have a certain number of positive votes in order to be included. The two paragraphs that had the most negative votes, but still had more than enough to achieve inclusion in the report, were regarding the possibility of ordaining women as deacons.

This week, I’m back here on the “unsalted” West Coast, and I’ve been thinking about how to approach other topics that the Synod participants discussed. Bishop Lohse’s wonderful homily at last week’s 10:30 Mass, which included the formal Installation of Fr. Evelio as our pastor, has provided the perfect segue to today’s installment. But first...

I’m willing to bet at least a few dollars that if you were to name the most controversial topic, or even the top 3 or 4, that women deacons would not be on your list. I’m willing to bet that what would be on your list would be a couple of other topics that are in the news quite a lot these days. And I’d like to point out a very interesting nuance that the Synod participants made as they addressed at least one of these. Stay with this, and don’t get nervous, now, ok?

The Synod participants rejected the use of the terminology “LBGTQ+” in their report. But they did address the issue of persons — human persons, created in God’s image, whose life and dignity every Catholic Christian is bound to protect and defend — who “struggle” with issues of gender identity or orientation. The “nuance” that impresses me, here, is that, by rejecting the letter series that serves as shorthand for a broad range of human experiences and challenges, they attempted to avoid entering into what is often called the “culture wars” in the political sphere. Yet they did not avoid dealing with real human persons who deal with real issues. Here’s how the Synod report puts it:

*Certain issues, such as those relating to matters of identity and sexuality, the end of life, complicated marital situations, and ethical issues related to artificial intelligence, are controversial not only in society, but also in the Church, because they raise new questions. (A Synodal Church in Mission, 15g).*

The report goes on to say that more study is needed, due to the “new questions” raised in more recent years. This illustrates that the Church is open to study and learning; it does not presume or ensure that the

Church’s teaching or disciplines will change, nor that they won’t. This is how the Magisterium works: slowly, diligently, carefully, and always building on the scriptures and the tradition of the Church. And the Synod is not the Magisterium; it is an exploration that will help to inform the work of the Magisterium.

Now to that homily from Bishop Lohse, last Sunday. Bishop Lohse reported that, in the local sessions leading to this Synod, held throughout the US last year (some were here in our diocese, and two were here at our parish), he was alarmed to hear that people who are alienated from the Church share a common perception: If you’re not perfect, you’re not welcome in the Catholic Church. “We have a problem,” he declared. And then he made this challenge:

*If people are different from us, if they are genuinely looking for God — and I admit not everyone is — but if they are genuinely seeking the Lord, do they know they are welcome here? What if they don’t look like us? Do they know they are welcome here? What if they don’t speak our language? Do they know they are welcome here? What if they are wrestling and struggling with some of the teachings of the church? (Maybe some of you are!) Do they know they are welcome here? What if they wrestle with questions of gender or identity or orientation? If they are genuinely seeking Christ in the midst of struggles, do they know they are welcome here?*

We have our work cut out for us, and from our bishop, we have not only permission but a mandate to do it. May the Spirit of God lead us as we strive to answer our bishop’s question: Do they know they are welcome here?

**Cold Winters Need Warm Hearts**  
**SECOND COLLECTION NEXT WEEKEND**  
**NOVEMBER 18 & 19**



This winter is sure to be a time of increased suffering for many people in Southwestern Michigan. The Home Heating Assistance Program provides emergency heating assistance, to anyone in the nine counties of the Diocese of Kalamazoo. Please consider making a donation directly anytime at [www.ccdok.org/donate](http://www.ccdok.org/donate). Thank you for making a difference to those in need in our community!



## *Installation of our Pastor A Day of Celebration and Joy!*



Concelebrants at the altar:  
Fr. Fabio, Fr. Evelio, Fr. Richard,  
Deacon John and Bishop Lohse.  
Servers: Cade Giles, Matte Super  
and RJ Garcia.

Confirmation candidates served  
donuts and cookies after Mass  
while other candidates made  
coffee.



### Knights of Columbus 4th Degree 87th Exemplification Congratulations

The Knights of Columbus, Michigan District 2, conducted the 87th Exemplification at St. Augustine Cathedral on Saturday, October 28th. The 4th Degree is the Patriotic Degree. We were honored to have two Douglas Council 8687 Knights, Tom Pantelleria and Bob Genetski Sr., in addition to Bishop Edward Lohse, participate and become a Knights in the 4th Degree.



A very Distinguished Class indeed! This picture was taken after the Exemplification. From left to right are: Sir Knights Pat Burroughs, Faithful Navigators Rich Van Eizenga, Tom Pantelleria and Faithful Comptroller Tom Kehr.

### Christian Neighbors needs stuffing mix!

Once again this year, St. Peter is asked to provide stuffing mix for the Christian Neighbors Thanksgiving Dinners. Baskets are in the Gathering Space Thanks for your generosity!

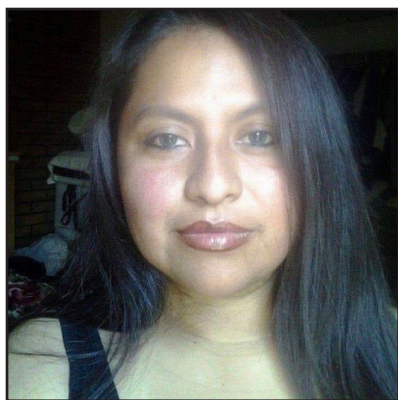


A big **THANK YOU** to everyone who participated in this year's **BOX OF JOY**. As a parish we packed **90 boxes!**

Since its inception, 512,855 Box of Joy gifts have blessed boys and girls in nine developing countries. In the 2022 Box of Joy season, 118,990 gifts were sent to children in six countries: the Dominican Republic, El Salvador, Grenada, Guatemala, Honduras and Malawi.

[crosscatholic.org/box-of-joy](http://crosscatholic.org/box-of-joy)





**QUE DESCANSE**  
*en paz*

*Concédele el descanso eterno, oh, Señor,  
y brille para ella la luz perpetua.  
Que las almas de todos los fieles difuntos,  
Por la misericordia de Dios, descanse en paz.*

Nereyda Benitez, mejor conocida como Nery, fue a estar con su Señor el 1 de Noviembre. Nos gustaría extender nuestro más sentido pésame a la familia Benítez López y agradecer a todos los que donaron el Domingo pasado en la venta de comida para ayudar con los arreglos del funeral de Nery. El total recaudado fue de \$5003 para esta causa.

### *Ahorra en tus impuestos y ¡Ayuda a San Felipe de Jesús!*

La Fundación Católica del Suroeste de Michigan (CFSM) fue establecida por la Diócesis de Kalamazoo proporcionará a las parroquias financiación a largo plazo. San Felipe de Jesús tiene su fondo propio en el CFSM.

#### **¡Hay muchas maneras en que puede apoyar al Fondo Parroquial San Felipe de Jesús!**

##### **Regalos de acciones**

¿Tiene acciones que se han revalorizado y quiere evitar ganancias de capital? Done sus acciones a el Fondo Parroquial San Felipe de Jesús y maximiza tus deducciones caritativas. Si tienes stock puedes deducir el valor total de mercado de las acciones como una deducción caritativa donando las acciones directamente a CFSM (si detallas las deducciones).[FUNDACIONES.CATOLICASWMI.ORG](http://FUNDACIONES.CATOLICASWMI.ORG)

##### **Reinversiones benéficas de una cuenta IRA**

Si tiene activos en una IRA o no deduce donaciones caritativas, puede beneficiarse al máximo de una Transferencia de IRA. Las distribuciones de reinversión de IRA benéfica cuentan para las distribuciones mínimas requeridas. Si usted tiene 70 años y medio o más, su IRA puede usarse como una forma conveniente y libre de impuestos de hacer donaciones de hasta \$100,000, ¡mientras se satisfacen las distribuciones mínimas requeridas (RMD)!

##### **Fondos asesorados por donantes**

Con esta técnica, puede hacer una gran contribución en un año fiscal para establecer o agregar a un Fondo asesorado por donantes. Si la donación es lo suficientemente grande, es posible que pueda detallar las deducciones de ese año. En años siguientes, cuando sus gastos deducibles no sean lo suficientemente grandes como para detallarlos, puede solicitar al administrador de fondos recomendado por el donante para hacer una distribución a una organización benéfica favorita, continuando así su apoyo a ello. Los fondos asesorados por donantes son relativamente baratos de establecer y mantener.

También puedes donar con tarjeta de crédito en línea en

[fundacionescatolicaswmi.org](http://fundacionescatolicaswmi.org)

Para obtener más información, comuníquese

con Keith Tharp en

[ktharp@diokzoo.org](mailto:ktharp@diokzoo.org)

o (269) 349-8714 ext. 1351



[CATHOLICFOUNDATIONSWMI.ORG](http://CATHOLICFOUNDATIONSWMI.ORG)

### *Instalación de nuestro Pastor* *Un día de celebración y alegría*



Padre Evelio firma un compromiso aceptando las responsabilidades de pastor.



Elevación de la Sagrada Hostia por el Obispo Lohse.



Monaguillos Matte Super y RJ García incensando el altar del Elevación (Consagración.)

## Esta semana en nuestra parroquia...

### Domingo, 12 de Noviembre

11:00am...Catequesis

12:30pm...Misa- Inscripción para candidatos de confirmación del próximo año después de la Misa este Domingo.

5:00pm...Catequesis del 2º año para la confirmación

### Martes, 14 de Noviembre

6:30pm... Catequesis

### Jueves, 16 de Noviembre

5:45pm...Rosario

6:30pm...Misa

### Sabado, 18 de Noviembre

3:00pm- 4:00pm...Platica de Matrimonio en San Basilio

### Domingo, 19 de Noviembre

11:00am...Catequesis

12:30pm...Misa

5:00pm...Catequesis del 2º año para la confirmación

### Lecturas de la semana del 12 de Noviembre

#### Domingo: 32º Domingo del Tiempo Ordinario

Sab 6, 12-16/Sal 62, 2. 3-4. 5-6. 7-8 (2)/1 Tes 4, 13-18 o 4, 13-14/Mt 25, 1-13

#### Lunes: Santa Francisca Javiera Cabrini, virgen

Sab 1, 1-7/Sal 138, 1-3. 4-6. 7-8. 9-10/Lc 17, 1-6

#### Martes:

Sab 2, 23—3, 9/Sal 33, 2-3. 16-17. 18-19/Lc 17, 7-10

#### Miércoles: San Alberto Magno, obispo y doctor de la Iglesia

Sab 6, 1-11/Sal 81, 3-4. 6-7/Lc 17, 11-19

#### Jueves: Santa Margarita de Escocia; Santa Gertrudis, virgen

Sab 7, 22—8, 1/Sal 118, 89. 90. 91. 130. 135. 175/Lc 17, 20-25

#### Viernes: Santa Isabel de Hungría, religiosa

Sab 13, 1-9/Sal 18, 2-3. 4-5/Lc 17, 26-37

#### Sábado: Dedicación de las Basílicas de San Pedro y San Pablo, apóstoles; Santa Rosa Filippina Duchesne, virgen

Sab 18, 14-16; 19, 6-9/Sal 104, 2-3. 36-37. 42-43/Lc 18, 1-8

#### Domingo siguiente: 33er Domingo del Tiempo Ordinario

Prov 31, 10-13. 19-20. 30-31/Sal 127, 1-2. 3. 4-5 (ver 1)/1 Tes 5, 1-6/Mt 25, 14-30 o 25, 14-15. 19-21

### INFORME DE OFERTORIO PARROQUIAL

Colecta de Todos Los Santos  
Octubre 31 y Noviembre 2 :

**\$572.00**

Colecta del Domingo

Noviembre 5:

**\$ 798.00**



**Domingo, 12 de Noviembre** Maura Villareal  
(Cumpleaños)

**Jueves, 16 de Noviembre** † Guillermo Grimaldo

Acompañanos a  
nuestra Celebración  
en honor a

*Nuestra Señora de  
Guadalupe*

*Martes, 12 de Diciembre*

MAÑANITAS 4:00AM

6:00 - 8:00pm  
EL SERVICIO RELIGIOSO  
EL BALLET FOLOCÓRICO  
LA MÚSICA DE MARIACHI  
DARÁN AL EVENTO UN  
AMBIENTE FESTIVO



El Servicio de Denuncias de Abuso de Obispos Católicos se ha establecido para recibir denuncias de abuso sexual y mala conducta de los obispos y transmitir esos informes a las autoridades eclesiales correspondientes para su investigación. Para hacer un informe, visite [ReportBishopAbuse.org](http://ReportBishopAbuse.org) o teléfono (800) 276-1562.

