



ONE FAMILY SHARING THE LOVE & LIGHT OF CHRIST

**MASS SCHEDULE:** TUESDAY - FRIDAY: 8:30 AM | SATURDAY: 4:30 PM | SUNDAY: 7:30 AM, 9:00 AM, 11:00 AM



**JULY**  
**27** **2025**

**MIDDLE SCHOOL LOVE BEGINS HERE RECAP**

*Page 2*

**LUMEN CHRISTI SCHOOL NEEDS SUBSTITUTE TEACHERS**

*Page 3*

**YOUNG ADULT SUMMER EVENTS**

*Page 3*

# NEWS & ANNOUNCEMENTS

PAGE 2

## WELCOME TO LUMEN CHRISTI CHURCH!

Thank you for joining us at Lumen Christi Parish! Whether you are visiting from another parish or are new to the area we are grateful you have chosen to worship with our faith community. We invite you to become a member of our parish family. We are a family rooted in the Lord always seeking to build His kingdom. Please call the parish office at (262) 242-7967 for more information on becoming a part of the Lumen Christi family.



## MIDDLE SCHOOL LOVE BEGINS HERE 2025

In July, Lumen Christi hosted 45 middle school missionaries from around the Archdiocese of Milwaukee, including 11 of our own students, as a part of Love Begins Here local outreach initiative.

Together, nine work groups served 21 households within Ozaukee county, Anita's Garden, Willowbrook Place, Kinship Urban Farm, Life's Connection Pregnancy Center, and around the Lumen Christi Parish grounds.

They cleaned headstones in the cemetery, spread mulch, pulled weeds, washed cars, planted flowers, organized garages, washed windows, swept, created Mary gardens, spent time with residents, and so much more. Totaling more than 450 hours of service in two days!

The Love Begins Here Middle School Missionaries worked hard, played hard, and prayed often. Things our missionaries loved: serving (especially locally), making new friends, playing games, going swimming, the food, praying together, and so much more.

I posed the question, "Where did they encounter God this week?" Here are the responses given:

- While helping others in the community
- In animals and friends
- Through helping others and serving the church
- In Reconciliation and Adoration
- While I was weeding
- Helping with the incense at Adoration
- Going to Mass and helping those in need
- Hearing about Mother Teresa's Story (she is the patron saint of the LBH Mission Trips)
- Everywhere but especially at Mass, Adoration, Confession, and when the entire LBH group prayed together.

St. Mother Teresa said, "I want you to find the poor here, right in your own home first. And begin love there. Be that good news to your own people. And find out about your next-door neighbour-do you know who they are?" (Nobel Prize Lecture 1979)

During this week with Love Begins Here, Ozaukee County became our Calcutta. The Middle Schoolers on this trip learned how to radiate Christ's love within our own community by serving others.

St. Teresa of Calcutta, pray for us!

**Kayla Rothering**, Middle School Youth Minister



## LC SCHOOL NEEDS SUBSTITUTE TEACHERS

Lumen Christi School is looking for substitute teachers for the 2025-2026 school year! WI Substitute License or Valid WI Teaching License required. For more information, please contact Angie Schultz in the school office at [schultza@lumenchristiparish.org](mailto:schultza@lumenchristiparish.org).

# your child belongs

REGISTER FOR CATHOLIC FORMATION TODAY!

## CATHOLIC FORMATION REGISTRATION IS OPEN

We are using our parish database system as the new platform to register for Catholic Formation. As a registered parish member, your information is already in our database. **We just need you to take the initial step of creating an account and then complete the registration which will take 5-10 minutes.**

Whether you have already created an account in Realm Connect or still need to create an account, **easy to follow instructions are available on the Catholic Formation page on the parish website.** If you have questions, please contact Meaghan Turner at [turnerm@lumenchristiparish.org](mailto:turnerm@lumenchristiparish.org) or Karen Bersch at [berschk@lumenchristiparish.org](mailto:berschk@lumenchristiparish.org) in the parish office.

## CATECHISTS & AIDES

We are looking for 25 catechists and aides for Sunday formation classes! Catechists and aides receive one free tuition each year. Teaching is a fun and rewarding way to get to know our parish families as well as enhance your own faith. Ask a friend and do it together! You will love teaching. Everything is provided and you will receive training and support. Contact Karen Bersch in the parish office for more information at (262) 512-8983.



## YOUNG ADULTS SUMMER EVENTS

**July 27:** Lumen Christi Young Adults Potluck Dinner - Gather in the Library at Lumen Christi at 5 PM for a Potluck. If you plan to attend you can sign-up for food to bring here. After dinner weather permitting we will have a bonfire. We can also have a bible study towards the end of the evening around the bonfire with smores, friendship, and lectio divina.

**July 29:** Gather in the Library at Lumen Christi at 6:30 PM - Pray a rosary and then drive to **Café Hollander for Trivia** at 7 PM.

Please email Deacon Alex Becker at [beckera@lumenchristiparish.org](mailto:beckera@lumenchristiparish.org) to let him know if you plan to attend so he knows who to account for, if you plan to be late, etc.



## LUMEN CHRISTI SCHOOL ALUMNI MASS & RECEPTION

Alumni and alumni parents of Lumen Christi, St. Cecilia, St. James, and St. Cecilia & James are invited to a special Alumni Mass and Reception on Saturday, August 2. Mass will begin at 4:30 PM, followed by a reception in St. Cecilia Hall with complimentary beer, wine, beverages, and snacks. It's a great opportunity to reconnect with fellow alumni and parents and celebrate our shared community. **Scan the QR code to RSVP.**



# NEWS & ANNOUNCEMENTS

PAGE 4

## THIS WEEK AT THE PARISH

### Communion Services (Chapel)

Mon - Fri | 7:15 AM & Sat | 8:30 AM

### Eucharistic Adoration (Chapel)

Wed | 6 - 8 PM & Thurs | 9 AM - 5 PM

### Reconciliation (Church)

Thurs | 4 - 5 PM & Sat | 9 - 10 AM

### MONDAY

Caring for Caregivers ..... 9 AM  
Room: Chapel

JustFaith ..... 4 PM  
Room: Sts. Matthew/Mark

### TUESDAY

Centering Prayer ..... 2 PM  
Room: St. Mary

Summer Bible Study ..... 1 PM  
Room: St. James Hall

### WEDNESDAY

Employment Network ..... 8 AM  
Room: St. Cecilia Hall

### THURSDAY

Spirituality Book Club ..... 9:30 AM  
Room: Sts. Matthew/Mark

Becoming Catholic ..... 6 PM  
Room: Sts. Matthew/Mark

## HELP NEEDED DURING THE CHILDREN'S LITURGY OF THE WORD

We are looking for adults to help with Children's Liturgy of the Word (CLOW) on the first and third Sunday of the month during the 9:00 AM Mass. We would like to have 4-6 people who would be on a rotating schedule throughout the year. Helpers put out crayons, write names on papers and help with kids who might want to return early to their parents in Mass.

The commitment is approximately 20 minutes in the middle of the 9:00 AM Mass and all those over the age of 18 must go through the Safe Environment three hour class if they have not been certified in the past. The next class will be on Wednesday, July 30 from 9 AM - Noon in St. James Hall. Please see the parish website to register for this session. **Email Karen Bersch in the parish office with questions.**

## LUMEN CHRISTI *Active* MEMBERSHIP

### Pillar: Regular Financial Support of the Parish

*These weekly Active Membership articles are written by LC parishioners, who are sharing their time and talent. We hope their words inspire you to embrace your active membership at LC to truly become "one family sharing the love and light of Christ."*

In today's gospel, one of the disciples asked Jesus, "Lord, teach us to pray." **Jesus goes on to give us the Our Father, probably one of the first prayers that each of us learned.** Many of us can recite it automatically, so **if you are like me, you might take its transformative and powerful words for granted.** But this week's gospel passage does not stop there. Jesus goes on and gives us a parable to reiterate His point: seek God above all things. Go to Him. Ask and you will receive.

**One area that we might take for granted is how we are so fortunate**

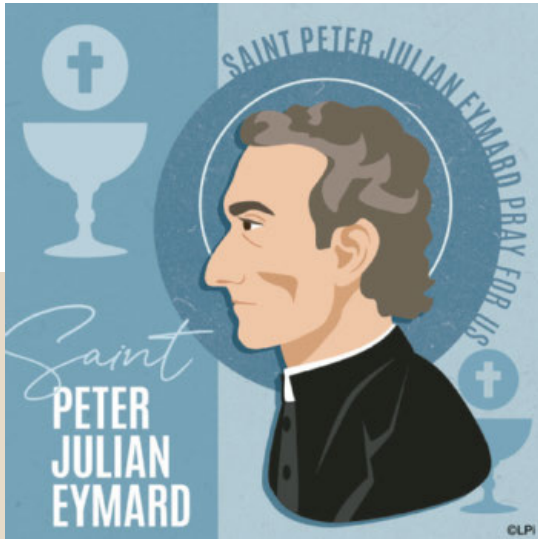
**at Lumen Christi with the many programs that are offered for our spiritual benefit and growth.** Spiritual, formational, and prayerful opportunities abound! **All of these are made possible through the generous and regular financial contributions of the active parishioners at Lumen Christi.** Thank you to all who have contributed for your continued generosity! If you are new to the parish and would like to formalize your giving, there are several ways to do that. Information can be found on the giving page of the parish website or by calling the parish office (262) 242-7967.



*Save  
the date!*  
**SEPT  
20  
2025**

## → *BBQ Cooking Contest* ←

The popular BBQ Cooking Contest will be returning for a third year to the 2025 Parish Picnic! If you're interested in being a contestant, please contact Justin Griffith at justingriffith00@gmail.com to register by August 4.



## DAILY OBSERVANCES & MASS INTENTIONS

**Monday, July 28**

*Weekday*

**Tuesday, July 29**

*Sts. Martha, Mary, & Lazarus*

8:30 AM † Dale Ravenscraft

**Wednesday, July 30**

*Weekday*

*St. Peter Chrysologus, Bishop & Doctor of the Church*

8:30 AM † Nancy Archenreiner

**Thursday, July 31**

*St. Ignatius of Loyola, Priest*

8:30 AM † George Courtis

**Friday, August 1**

*St. Alphonsus Liguori, Bishop & Doctor of the Church*

8:30 AM † Wayne Fritsch

*(Anointing of the Sick the last Friday of the month after Mass)*

**Saturday, August 2**

*Weekday | St. Eusebius of Vercelli, Bishop*

*St. Peter Julian Eymard, Priest*

*Mass of Anticipation: 18th Sunday in Ordinary Time*

4:30 PM † Florence Barachy

**Sunday, August 3**

*18th Sunday in Ordinary Time*

7:30 AM For the parishioners of Lumen Christi

9:00 AM † Wanda Kryshak

11:00 AM † Elizabeth & Richard Coury

## COMMUNION SERVICES

Monday - Friday at 7:15 AM & Saturday at 8:30 AM

## PRAYER REQUESTS

Patrick Lawless	Margaret Fritsch	John B. Brian Merkel	David Hughes
Tyler	Marjorie Drehfal	Sue	Matt
Matthew Ceelen	Myles Brandt	Richard Thoma	Marie
Dave Witman	Martha	Judy N.	Robert
Susan	Christine Essex	Mike Kaske	Betty Ollerman
Rosemary Moore	Gloria Fritsch	Olivia	Kayden
Julie	Inge Kraninger	Gerald & Linda Lafferty	David
Dave Ostrenga	Patrick Swan	Jess	Mary Beth Willichowski
David	MJR	Craig	Catherine

## WEEKLY READINGS

**Sunday:** Gn 18:20-32/Ps 138:1-2, 2-3, 6-7, 7-8 (3a)/Col 2:12-14/Lk 11:1-13

**Monday:** Ex 32:15-24, 30-34/Ps 106:19-20, 21-22, 23/Mt 13:31-35

**Tuesday:** Ex 33:7-11; 34:5b-9, 28/Ps 103:6-7, 8-9, 10-11, 12-13/Jn 11:19-27 or Lk 10:38-42

**Wednesday:** Ex 34:29-35/Ps 99:5, 6, 7, 9/Mt 13:44-46

**Thursday:** Ex 40:16-21, 34-38/Ps 84:3, 4, 5-6a and 8a, 11/Mt 13:47-53

**Friday:** Lv 23:1, 4-11, 15-16, 27, 34b-37/Ps 81:3-4, 5-6, 10-11ab/Mt 13:54-58

**Saturday:** Lv 25:1, 8-17/Ps 67:2-3, 5, 7-8/Mt 14:1-12

**Next Sunday:** Eccl 1:2; 2:21-23/Ps 90:3-4, 5-6, 12-13, 14, 17 (1)/Col 3:1-5, 9-11/Lk 12:13-21



## WEDDING BANNS

Mackenzie Kurtin & Ryen Ryba (III)

Alicia Barker & James Sewart (II)

McKenna Rae Scott & Preston Yahr (I)

## WE WELCOME INTO THE FAITH THOSE RECENTLY BAPTIZED:

**Hayden Emilia,**

daughter of David & Alexandra Gushee

**Daphne Juliette,**

daughter of Jonathan & Julianne Manschot

**Margo Magdalene,**

daughter of Mark & Lizbeth Ropella



## IN LOVING MEMORY OF THOSE WHO RECENTLY PASSED AWAY:

Born to eternal rest on July 17, 2025

**CAROL HOFFMAN**

*Longtime parishioner*

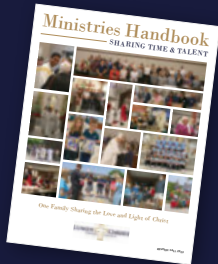
*Eternal rest grant unto her, O Lord,  
and may perpetual light shine upon her.*



## STEWARDSHIP CORNER

*Jesus calls us to be workers in the vineyard of God's Kingdom. How can you give back to God with your time & talent?*

If you would like to know more about any of our ministries - please stop by the parish office for a copy of our Ministry Handbook, or view it online at the parish website (or scan the QR code!)



## LADIES OF CHARITY CLOTHING CENTER UPDATE

The Ladies of Charity organization is delighted to share the following news: **Over 850 school-age children (K4-high school seniors) were outfitted with clothing throughout the 2024-25 season.** This includes:

- 850 coats, hats, gloves, and pajamas
- 8500 pairs of new socks
- 5950 pairs of underwear
- 2550 jeans, sweats, and leggings
- 5100 tops and hoodies

Your contributions of gently used items, along with the Lumen Christi Knights of Columbus cartons of kids' coats, help make our outreach possible. Many thanks for your in-kind donations. We are blessed with a most generous/supportive parish! The lease for the clothing center at Our Lady of Guadalupe has been renewed for the coming year and will open September 3!

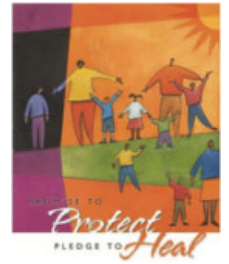
Gratefully,  
**Cathy Liska**

## SAFE ENVIRONMENT TRAINING

**Wednesday, July 30 | 9 AM - Noon | St. James Hall**

We will be hosting another Safe Environment session on Wednesday, July 30 from 9 AM - Noon in St. James Hall. Lumen Christi is committed to providing a safe environment for all. In compliance with the Archdiocese of Milwaukee and the USCCB, all volunteers over the age of 18 must attend a (free, one time) Safe Environment Education Session, pass a criminal background check and sign the Code of Ethical Standards for Church Leaders. In addition, it is our goal to have ALL parents and adults attend this class to increase awareness and safety. This would also qualify all parishioners to volunteer with any child or youth ministry program in any capacity.

**To register, visit [milwaukee.cmgconnect.org](http://milwaukee.cmgconnect.org) or the parish website. Registration for this session will close 24 hours prior to the start time of the session.** Please contact Karen Bersch in the parish office with any questions.



## JIM LUTHER NEW HOPE CENTER

*Canned tuna, canned salmon, size 4 diapers, baby food, baby cereal, deodorant, razors, small lotions (8-12oz size), small dish detergent, plastic grocery bags, & used suitcases with rollers.* Monetary donations are also accepted. Checks can be written to the Jim Luther New Hope Center. Volunteers are always needed on Tuesdays from 12 - 2:30 PM & Wednesdays from 3:30 - 6 PM. Call Kathy Saia with any questions at (262) 242-1644.



## CREATION CARE CORNER: ONE SIMPLE ACT® Unplug countertop appliances & electronics!

Make it a habit to unplug small appliances and electronics. Walk around the house at night and look for small glowing lights. A small change in behavior, mere seconds a day, makes a huge difference. © 2017 Waukesha County Green Team | [www.waukesha-countygreenteam.org](http://www.waukesha-countygreenteam.org)

## HELLO, NEIGHBOR

**Save the date for Sunday, September 28!** We will be celebrating Mass at All Saints Church at 11 AM, lunch to follow at 12:30 PM, and presentation by Reggie Jackson at 1 PM. Registration will be coming soon.

## DID YOU KNOW?

Lumen Christi has a Poor Box in the Gathering Space located on the wall across from St. James Hall. Being both a stewardship and evangelizing parish, we are called to help those who may be struggling financially at times in their lives. We have a fund called Helping Hand to assist with various requests from parishioners. All donations are greatly appreciated. Thank you for your continued generosity!

## LC CEMETERY BURIAL SITES DECORATIONS

It has become more common to place lovely live or faux flowers at the cemetery near loved one's burial sites. Please know that we do have to either move most of these to near the well because they impede grass mowing and trimming, or remove them completely after a period of time. In addition, these items damage the grass leaving an unsightly hole once the item is removed. We also discourage planted "gardens" unless you plan to personally maintain the planted flower garden by weeding and watering regularly. Thank you for your understanding.

## ST. THÉRÈSE OF LISIEUX RELICS COMING TO HOLY HILL By Jay Sorgi (Originally published in the *Catholic Herald* on July 8, 2025)

One hundred years after the canonization of St. Thérèse of Lisieux, her “story of a soul” is coming to southeastern Wisconsin in powerful form during the Jubilee Year of Hope.

Pilgrims can venerate and honor her relics, including some of her bones, at the Basilica and National Shrine of Mary Help of Christians at Holy Hill in Hubertus from Nov. 15-18.

The visit comes as part of a national tour making 40 stops in 11 states, including just one other in the Midwest, from October to early December.

St. Thérèse’s relics last came to the United States in 1999 and 2000, when more than 1 million people experienced them.

“It’s a significant portion of her remains that they have put into this very special, beautiful reliquary. And then they take it all over the world,” said Fr. Michael-Joseph Paris, O.C.D., the postulant director of Holy Hill and coordinator for the relics visit there.

The Holy Hill visit offers pilgrims the chance to venerate her relics, visible links to a saint and the grace that directly moved through her life and still moves through her example. Catholics have often honored relics in a way that doesn’t worship the saint — worship belongs to God alone — but to honor the saint and all that God has done through them.

“Americans, we’re not used to seeing death. Things like relics too, even bones, for other Catholic cultures, it’s not so striking. For us, we don’t have that same exposure, so I think it does take a little bit for, for Catholics in the United States to get comfortable with relics; but it’s so part of our incarnational faith, you know, that God became man and that he uses the things of human nature to impart his grace,” Fr. Paris said.

“The saints especially are like his most

beloved masterworks of grace and goodness. Their relics signify a kind of personal presence in a unique way. God’s continuing to work through them to do great things through that.”

Tour organizers say that the opportunity to venerate her relics those years led to miracles, conversions and calls to the priesthood and religious life.

“There were many stories of people who had really extraordinary graces that came through these relics,” Fr. Paris said. “The way that Thérèse encounters people so strongly, (is) compounded with Holy Hill, which is such a healing place, such a place of Our Lady’s presence.”

Born in January 1873 in Alençon, France, St. Thérèse at age 4 endured the loss of her mother along with suffering from her own numerous ailments that led to a fragile childhood.

She entered the Carmelite order when both her father and church leaders allowed her to join at an unusually young age of 15 years old.

Taking the name “Thérèse of the Child Jesus and the Holy Face,” she focused her life on small humble, loving actions, all as ways of overcoming obstacles like the ones she physically faced — including tuberculosis.

She spent her short life of 24 years offering her pain to God, writing often about the need to trust in the Lord despite her challenges, even using her pain to draw closer to God. Those writings became a major part of her autobiography, “Story of a Soul.”

“People who live in difficult situations, they feel drawn to Thérèse. There’s a certain sense that she was so in touch with her own weakness, so for those of us who know our weaknesses or experience our weakness on certain levels, there’s this connaturality with St. Thérèse,” Fr. Paris said.

“We feel like she understands us and that we can still find this amazing path to God regardless of our own shortcomings and limitations. I think she’s so meaningful because she is someone who really struggled, who



went through a lot, who had her own wounds from her childhood. It’s not like they just went away, but she was able through the grace of God to overcome in a sense where they didn’t control her anymore, didn’t define who she was, and they didn’t control her life.”

Thérèse died in September 1897. Twenty-eight years later, Pope Pius XI canonized her. She was declared a Doctor of the Church in 1997 and is only one of four women saints to receive this honor among the 37 saints with this title.

Her relics remind pilgrims of the grace God has brought the world through the story of St. Thérèse, the universal call to simply love one another that was the hallmark of her short but incredibly inspiring life.

“The greatest honor we can give Almighty God is to live happily because of the knowledge of His love,” she wrote. “Each small effort of love creates in heaven a permanent flower, more beautiful and more precious than all the stars.”

For details on related local events and services, go to <https://stthereseusa2025.com/schedule-of-events>

Source: *The Catholic Herald*, © 2025. All rights reserved. *The Catholic Herald* is the voice of the Archdiocese of Milwaukee, inspiring, catechizing and evangelizing members of the Catholic community to live their faith. Sign up for a free subscription for their digital edition by scanning the QR code or visiting [catholicherald.org](http://catholicherald.org).



## WOMEN'S CIRCLE OF FAITH

**Please call the leader of each group to be included in these activities. New participants are always welcome! ALL ACTIVITIES ARE OPEN TO ALL WOMEN OF THE PARISH! PLEASE JOIN IN!**

### WCOF WALKERS

We meet the second and fourth Wednesdays of the month at scenic locations in the North Shore area. Most walks are approximately 1-1/2 hours long. If interested, contact [nancycmequon@gmail.com](mailto:nancycmequon@gmail.com) or Jean Stewart (262-241-5145) for more information and the location.

### SOJOURNER FAMILY PEACE DINNERS

Peace Dinners Ministry provides dinners for the women and children of the Sojourner Family Peace Center. Join a team to help prepare and serve dinner for the Peace Center. Commitment is one evening per quarter (4 times per year). Please contact Laura Rowe ([lannrowe@gmail.com](mailto:lannrowe@gmail.com)) for more information or to join a team.

### CHILDREN'S CLOTHING CENTER

The Ladies of Charity Clothing Center is located at Our Lady of Guadalupe Parish, located at 605 S. 4th Street in Milwaukee. Clothing will be distributed from the school building. Age appropriate new and gently used clothing may be dropped off at Lumen Christi in the Works of Mercy Donation Area near the lower level entrance. The bins are marked "Children's Clothing Center". Contact Cathy Liska (414) 688-4455 with questions.

### NEEDLEWORK ARTISTS

Each year the Christ Child Society's Milwaukee Chapter distributes a layette to more than 2,000 infants born in Milwaukee hospitals. The greatest need is for hats in a 3-6 month size. They would also appreciate the donation of handmade infant blankets, approximately 40 X 40 inches in size. These items can be sewn, knitted, or crocheted. Donations can be dropped off in the Lumen Christi Office. Contact Kathy Shields at (262) 512-8981 or [shieldsk@lumenchristiparish.org](mailto:shieldsk@lumenchristiparish.org) with any questions. Thank you for your help in getting these babies off to a good start!

### TUESDAY EVENING BOOK CIRCLE

All are welcome to join us. We usually meet in **St. Elizabeth** at **7:00 PM** on the **first Tuesday of each month**. The selection for **Aug. 5** is *The Measure* by Nikki Erlick. Contact Judy Gilroy at (262) 242-4278 or [rgilroy@wi.rr.com](mailto:rgilroy@wi.rr.com) with questions.

### THURSDAY MORNING BOOK CIRCLE

Please join us for a monthly discussion at **9:30 AM** on the **third Thursday** morning of the month. **We will not meet in June, July, or August**. The selection for **September 18** will be announced in August. Please Contact Linda Bergemann with any questions at [k.bergemann@sbcglobal.net](mailto:k.bergemann@sbcglobal.net).

### WCOF BRIDGE MARATHON

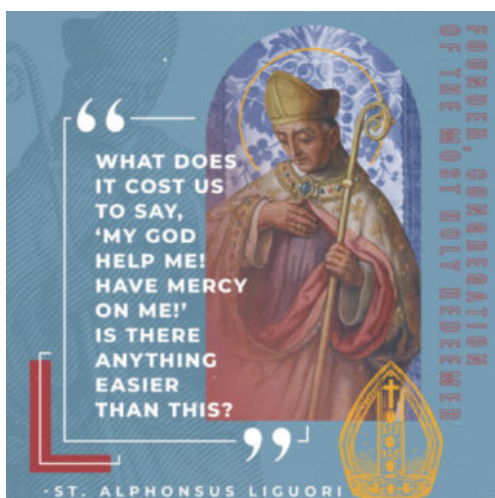
We play at 12:15 PM on the 2nd and 4th Thursday of the month, September - May, at Lumen Christi. It is best to have your own partner, but we will try to match you with another single. For sign up or more information, please contact Holly Palmisano at (262) 643-4343.

### MOMS IN PRAYER INTERNATIONAL

Continues to gather moms to pray for our children, teachers, and schools in the Mequon-Thiensville community. God continues to work miracles in our lives and in our schools. We meet every Monday night from 7-8 via Zoom. To learn more, please contact Debbie at [jvredenbregt@wi.rr.com](mailto:jvredenbregt@wi.rr.com) or (262) 389-5301.

### WCOF INFORMATION & STAFF SUPPORT

If you would like to propose an activity or need further information, contact Kathy Shields at (262) 512-8981 or [shieldsk@lumenchristiparish.org](mailto:shieldsk@lumenchristiparish.org). To get listed in the **WCOF bulletin**, contact Marianne Nass at (414) 828-9290 or [marianne@legacytravelgroup.com](mailto:marianne@legacytravelgroup.com). Please submit items 10 days in advance. Include your email address if you want confirmation.



## FORMED

PICK OF THE WEEK

### ST. ALPHONSUS LIGUORI CATHOLIC SAINTS

Born to a noble Italian family and known as the "Prince of Moral Theologians", St. Alphonsus Liguori was a great preacher, lawyer, bishop, theologian, and Doctor of the Church. In this episode of Catholic Saints, Augustine Institute professors Dr. Sean Innerst and Dr. Ben Akers discuss this holy man, drawing wisdom from his life and works to aid Catholics today.

**Get thousands of enriching Catholic movies, programs, audio, & books instantly on FORMED for FREE! How to Sign Up:** (1) Visit [FORMED.org](http://FORMED.org). (2) Click sign up & select "I Belong to a Parish". (3) Search for the zip code "53092" and select Lumen Christi. (4) Enter your information. You will receive an email to confirm your sign up.

### CATHOLIC TRIVIA - JUST FOR FUN ©LPi

**Question:** What word did Jesus call God the Father when he was praying?

**Answer:** Abba



## CONTACT US

2750 W Mequon Road, Mequon, WI 53092

Phone: (262) 242-7967 | Fax: (262) 242-7970

Website: [www.lumenchristiparish.org](http://www.lumenchristiparish.org)

## PARISH OFFICE HOURS

*(subject to change for holy days & holidays)*

Monday-Thursday | 8 AM - 4:30 PM & Friday | 8 AM - 3 PM

## SACRAMENTS

**Reconciliation:** Thursdays from 4-5 PM & Saturdays from 9-10 AM or by appointment. *(subject to change for holy days & holidays)*

**Baptism:** Preparation is required. Arrangements can be made through the Baptism Coordinator, Kathy Shields.

**Matrimony:** By appointment only. Please make arrangements at least six months to one year in advance by calling the parish office.

## CONNECT WITH US ON SOCIAL MEDIA!

Make sure to follow Lumen Christi Parish & Lumen Christi School on Facebook and Instagram! Get the light of Lumen Christi Parish right in your newsfeed & follow the exciting and inspirational activities that take place in our school!

**Lumen Christi Parish:** @lumenchristicatholicchurch (Facebook & Instagram)

**Lumen Christi Youth Ministry:** @lcyouthministry (Instagram)

**Lumen Christi School:** @lumenchristicatholicschool (Facebook) & @lumenchristi\_school (Instagram)

## PARISH COUNCIL MINUTES

Meeting minutes are available on the parish website.

## PARISH STAFF

*All area codes are 262 unless otherwise noted.*

### PASTORAL

**Fr. Matthew Jacob, Pastor**

242-7967 | [jacobm@lumenchristiparish.org](mailto:jacobm@lumenchristiparish.org)

**Fr. Michael Courchaine, Associate Pastor**

242-7972 | [courchainem@lumenchristiparish.org](mailto:courchainem@lumenchristiparish.org)

**Dcn. David Grambow, Deacon**

(414) 690-4600 | [dwgrambow@gmail.com](mailto:dwgrambow@gmail.com)

**Dcn. Anthony Monfre, Deacon**

241-4719 | [tmonfre@wi.rr.com](mailto:tmonfre@wi.rr.com)

**Dcn. John Shaughnessy, Deacon**

225-7494 | [gardetto07@gmail.com](mailto:gardetto07@gmail.com)

**Dcn. Joseph Wenzler, Deacon (May-December)**

894-3842 | [jpwenzler@gmail.com](mailto:jpwenzler@gmail.com)

**Dcn. Alex Becker, Deacon (Seminarist)**

[beckera@lumenchristiparish.org](mailto:beckera@lumenchristiparish.org)

**Catherine Zirngibl, Pastoral Associate**

512-8994 | [zirngiblc@lumenchristiparish.org](mailto:zirngiblc@lumenchristiparish.org)

**Jane Bartlett, Director of Finance**

512-8991 | [bartlettj@lumenchristiparish.org](mailto:bartlettj@lumenchristiparish.org)

**Stacy Larrea, Tuition Manager/Accountant\***

242-7967 | [accounting@lumenchristiparish.org](mailto:accounting@lumenchristiparish.org)

**Margaret Caldwell, Director of Music & Liturgy**

512-8982 | [caldwellm@lumenchristiparish.org](mailto:caldwellm@lumenchristiparish.org)

**Meaghan Turner, Director of Catholic Formation**

242-7967 | [turnerm@lumenchristiparish.org](mailto:turnerm@lumenchristiparish.org)

**Kate Heinzman, Child Ministry Coordinator**

242-7967 | [heinzmank@lumenchristiparish.org](mailto:heinzmank@lumenchristiparish.org)

**Kayla Rothering, Middle School Youth Minister**

242-7967 | [kayla@lumenchristiparish.org](mailto:kayla@lumenchristiparish.org)

**Olivia Brotherhood, High School Youth Minister**

242-7967 | [olivia@lumenchristiparish.org](mailto:olivia@lumenchristiparish.org)

**Kathy Shields, Baptism Coordinator\***

512-8981 | [shieldsk@lumenchristiparish.org](mailto:shieldsk@lumenchristiparish.org)

**Kelsey Eyers, Communications Coordinator\***

242-7967 | [eyersk@lumenchristiparish.org](mailto:eyersk@lumenchristiparish.org)

**Karen Bersch, General Assistant for Catholic Formation**

512-8983 | [berschk@lumenchristiparish.org](mailto:berschk@lumenchristiparish.org)

**Fran Blaubach, Administrative Assistant\***

242-7967 | [blaubachf@lumenchristiparish.org](mailto:blaubachf@lumenchristiparish.org)

**Cherie Claussen, Administrative Assistant\***

242-7967 | [receptionist@lumenchristiparish.org](mailto:receptionist@lumenchristiparish.org)

**Stephanie Kapta, Liturgy Administrative Assistant\***

242-7967 | [kaptas@lumenchristiparish.org](mailto:kaptas@lumenchristiparish.org)

**Leslie Lorino, Hospitality Coordinator\***

242-7967 | [lorinol@lumenchristiparish.org](mailto:lorinol@lumenchristiparish.org)

**Barb McPherson, Administrative Assistant\***

242-7967 | [receptionist@lumenchristiparish.org](mailto:receptionist@lumenchristiparish.org)

**Teri Roberts, Music & Liturgy Assistant\***

**Julia Wren, Child Ministry Assistant\***

[wrenj@lumenchristiparish.org](mailto:wrenj@lumenchristiparish.org)

**Patrick Hodgins, Athletic Director\***

242-7967 | [ad@lumenchristiparish.org](mailto:ad@lumenchristiparish.org)

**Charlie Daub, Maintenance**

242-7967 | [daubc@lumenchristiparish.org](mailto:daubc@lumenchristiparish.org)

### PASTORAL COUNCIL

**Bob Meyers, Chair (414) 639-6241**

**Doug Patch, Trustee - Secretary (414) 640-4505**

**Jon VanDrisse, Trustee - Treasurer (414) 807-1819**

### SCHOOL

**Kelly Fyfe, School Principal**

242-7960 | [fyfek@lumenchristiparish.org](mailto:fyfek@lumenchristiparish.org)

**Megan DeGuire, Director of Engagement**

242-7960 | [deguirem@lumenchristiparish.org](mailto:deguirem@lumenchristiparish.org)

**Brittany Cooper, Director of Development\***

242-7960 | [cooperb@lumenchristiparish.org](mailto:cooperb@lumenchristiparish.org)

*\*indicates staff who are part-time*



Computers - Internet - Parts - Service

10898 N. Port Washington Rd.  
Mequon, WI 53092  
262-241-4638

FAMILY OWNED



HISTORICAL RESTORATION • TUCKPOINTING  
CAULKING  
COMMERCIAL & RESIDENTIAL  
(800) 924-0024  
BELGIUM, WI



GOEBEL  
WOODWORK, INC. Est. 1950

Custom Home & Commercial Cabinetry  
Design & Installation • Cabinet Refacing  
Formica, Corian and Stone Counters  
(262) 284-2183 • 1-800-728-7117  
www.goebelwoodworkinc.com  
2563 Hwy. 32 Port Washington



BUBON  
ORTHODONTICS

11351 N. Port  
Washington Rd.  
Mequon, WI  
53092

BubonOrtho.com | 262-522-7447



Milwaukee Catholic Home  
Call today at (414) 224-9700 or  
visit us online at  
www.trinityseniorservices.org

## Oral Surgery Associates

MILWAUKEE, WI  
WWW.ORALSURGERYASSOCIATES.NET

DR. ALAN KIMMEL, DDS

DR. PETER WAGNER, DDS

DR. BRIAN CARR, DMD

ORAL SURGERY ASSOCIATES  
7801 SOUTH HOWELL AVENUE  
STE 202  
OAK CREEK, WI 53154  
(414) 764-2880

ORAL SURGERY ASSOCIATES  
10535 NORTH PORT  
WASHINGTON ROAD STE 102  
MEQUON, WI 53092  
(262) 241-0900

ORAL SURGERY ASSOCIATES  
800 NORTH MAYFAIR ROAD STE 130  
WAUWATOSA, WI 53226  
(262) 798-0800



MEQUON  
SMILE DESIGN

Formerly Friedman  
Dental Care



Dr. Julie Melbinger-  
Wagner, DDS

Parishioner

11649 N. Port Washington  
Ste 112  
MEQUON, WI 53092

262-240-9400  
www.mequonsmiledesign.com

10% DISCOUNT  
when you mention this ad

# WADE

Design | Build | Remodel

Redefining space for the way you live.  
(262) 512-1799 | www.wadedesigninc.com

SUPPORT  
OUR  
ADVERTISERS!

LAWN AND LANDSCAPE



COCO'S LANDSCAPING

Tree Cutting and Tree Planting  
Stump Grinding & Removal  
FREE estimates Insured Debris Removal  
Contact Us Today 262-674-0059

# sommer's

Where customers send their friends



WISCONSIN'S LARGEST!

7211 West Mequon Rd. | 262-242-0100 | www.sommerscars.com



Plumbing - Heating - Air Conditioning  
Sewer Construction

262-251-2630

W143 N9358 Henry Stark Rd.  
Menomonee Falls  
www.joedevelak.com MP 246187



offers a wide range of  
HOME CARE SERVICES  
and is dedicated to providing  
quality personal care assistance  
for you or your loved one.

10033 N Port Washington Rd #175 • Mequon  
262-236-9194

DOES YOUR NONPROFIT  
ORGANIZATION NEED  
A NEWSLETTER?

Engaging, ad-supported  
print and digital  
newsletters to reach  
your community.

Visit lpicommunities.com



Scan to  
contact us!



# BERGHAMMER

Construction Corporation

- General Contracting
- Construction Management
- Design-Build

Multiple Parish Members  
www.berghammer.com

Proud Construction Partner of Lumen Christi Parish



# P2 AUTO VAULT & BUSINESS CONDOS

(262) 228-8941

buy@p2autovault.com • www.p2autovault.com

# SCHRAMKA

Funeral Homes

A Catholic Family Tradition  
Since 1892

www.schramkafuneralhome.com  
262-432-8100

ADT-Monitored Home Security

Get 24-Hour Protection From a Name You Can Trust

- Burglary
- Flood Detection
- Fire Safety
- Carbon Monoxide



SafeStreets

833-287-3502

NEVER MISS OUR BULLETIN!

SUBSCRIBE

Have our bulletin emailed to you every week.

Visit www.parishesonline.com



Big Brothers  
Big Sisters  
of Metro Milwaukee

Make a Big Difference.

(414) 258-4778

bbbsmilwaukee.org



PAVING AND CONCRETE

A PAVE AMERICA COMPANY

262.691.3964

www.plmpaving.com

JUST MECHANICAL

Southeastern Wisconsin

(262) 886-2365

www.just-mechanical.com

We specialize in Industrial and Commercial  
HVAC • Plumbing • Sheet Metal  
Controls • Boilers



# LUMIA

BOUTIQUE ASSISTED LIVING AND MEMORY CARE COMMUNITY

11900 North Port Washington Rd MEQUON 262-988-8800



For ad info. call 1-800-950-9952 • www.4lpi.com

Lumen Christi, Mequon, WI

C 4C 01-0170



**Eernisse Funeral Home & Cremation Service**  
(262) 376-9600



Michael Schramka  
Associate

www.eernissefuneralhome.com



**Gordie Boucher Village Ford**  
121 N. Main Street Thiensville, WI 53092  
262-242-1100

www.gordieboucherford.com



**EXTERIORS UNLIMITED**  
LANDSCAPE CONTRACTORS  
5129 W. Donges Bay Rd Mequon, WI 53092

Landscape, Design & Installation  
**262-242-4884**  
www.exteriors-unlimited.com


Sales • Service • Parts • LP Gas



**MEQUON LAWN & GARDEN**  
11333 N. Port Washington Rd.  
(262) 241-4120

Famous for **FAMILY SMILES**  
Personalized Expert Care

10033 N Port Washington Rd  
mikimdds.com  
262-241-5558



**COSMETIC DENTISTRY**  
Teeth Whitening  
In Office & take home  
CLEAR ALIGNERS  
Free consults

Natural looking fillings, veneers, crowns and implants

Now Accepting NEW PATIENTS

**LIEBAU-LAUN**  
WELLS - PUMPS  
Parish Member  
SINCE 1888

**262-242-1740**

**Choice Cuts Tree Service**

For A Free Quote  
Call: 414-406-7706

www.choicecutstreeservice.com

**Better BLINDS**

BETTER WINDOW TREATMENTS  
FOR ANY BUDGET!

**FINANCING AVAILABLE  
0% FOR 12 MONTHS**

414.299.9099 • www.betterblindsMW.com

**CLIFF BERGIN & ASSOCIATES, INC.**

6300 W. DONGES BAY RD.  
MEQUON, WI 53092  
262-242-2456

Plumbing, Well Pumps & Water Conditioning  
Heating, Air Conditioning  
& Indoor Air Quality Service and Sales  
www.cbergin.com



**Treetops Landscape Design Inc.**  
*Creating a Sense of Place*

Proudly serving the  
Northshore since 1976

**262.375.0050**  
treetopsinc.com

**LET'S GROW YOUR BUSINESS**  
Place Your Ad Here and Support Our Parish!

**CONTACT ME Jeff Tkachuk**

jtkachuk@4LPi.com (800) 950-9952 x2513

**NELCO ELECTRIC, INC.**  
ELECTRICAL CONTRACTORS AND DESIGNERS OF ELECTRICAL SYSTEMS

Commercial, Residential,  
Industrial, Institutional  
24 Hour Service

P.O. BOX 157 • N115 W19395 EDISON DRIVE  
GERMANTOWN, WI 53022  
262-502-9950 • WWW.NELCOELECTRIC.COM

**IF YOU LIVE ALONE**

**MDMedAlert!**™ As Low As  
**\$19<sup>95</sup>** /mo.

✓ Ambulance ✓ Police/Fire  
✓ Family/Friends ✓ GPS & Fall Alert

**CALL NOW! 800.808.9294**  
md-medalert.com





**Atty. Benjamin James Britton**  
Estate Planning

- No Hidden Cost, Flat Fee Pricing
- After Hours & Weekend Availability
- Modern Plans for the Ever Changing Family Dynamic

**Britton & Associates, S.C.**  
1035 W. Glen Oaks Lane, Ste. 100  
Mequon, WI  
414-273-2900 • www.britton-law.com

**TOBIN JEWELERS**

PROUD PARISHONER AND SUPPORTER OF LUMEN CHRISTI

YOUR LOCAL WISCONSIN PROVIDER  
OF LOOSE DIAMONDS AND FINE JEWELRY



NEW BERLIN MEQUON  
WWW.TOBINJEWELERS.COM

*Future Hilltoppers,  
your journey starts here!*



**OPEN HOUSE**  
SUNDAY, OCTOBER 12  
9 A.M. - 1 P.M.

**Schmidt & Bartelt**  
Funeral & Cremation Service

"Providing Affordable Services  
at Your Church or  
Any One of Our Locations."

10280 N. Port Washington Rd.  
(262) 241-8085



**SUPPORT OUR PARISH**

**HOLTON BROTHERS INC.**

Building Restoration  
Contractors

Tuckpointing • Chimney Repair  
Caulking • Waterproofing  
Tom Holton, Parish Member

1257 Terminal Rd, Grafton, WI  
(262) 377-7887

Parish Member • We Deliver • 262-241-0700



**JIMMY JOHN'S**  
Since 1983  
GOURMET SANDWICHES

11525 N. Port Washington Rd.

Open to current 6th, 7th, and 8th grade boys and their families.

Meet faculty, coaches, club moderators and current parents while exploring academics, student life and financial aid options.



• 9 A.M. Mass  
• 10 A.M. - 1 P.M. Open House with student-led tours  
• Location: 3401 W. Wisconsin Ave.

Register at [muhs.info/open-house](http://muhs.info/open-house)



**MARQUETTE UNIVERSITY HIGH SCHOOL**  
For Faith, Scholarship and Community





**SG SEWART GROUP**

**Karine Sewart**

414.526.0754  
sewartgroup@compass.com  
sewartgroup.com

EXPERIENCE THE ADVANTAGE.

COMPASS

**BOEHLKE HARDWARE PLUMBING**

"Serving the Community Since 1927"

10712 W. FREISTADT ROAD 120N  
MEQUON, WI 53097

**(262) 242-3050**

PLUMBING • WATER SYSTEMS  
INSTALLATION AND SERVICE

Commercial, Industrial & Residential Roofing Experts

**NOFFKE ROOFING**

A company you can trust since 1952

**262-242-5320**  
NoffkeRoofing.com

**MORE**

MEDICAL AESTHETICS & WELLNESS

BOTOX•FILLERS  
SCULPTRA  
LASER•MEDICAL  
WEIGHT LOSS  
WELLNESS

111433 NORTH PORT WASHINGTON ROAD,  
MEQUON (414) 375-5005

**AZ Apothecary**

All natural & organic products for beauty, health & self-care

Online Shop: [www.atozapotheary.com](http://www.atozapotheary.com)  
Owners: Antonella Aleman-Zientek & Jeffrey Zientek, Parishioners

**WILLOWBROOK PLACE**

Independent & Assisted Living

205 Green Bay Rd  
Thiensville, WI

Make a Reservation for a Tour at 262-242-8045 Extension 102

**Feerick FUNERAL HOME**

Established 1896

Five Generations Family Owned & Operated

Patrick H. Feerick (Parish Member)

2025 East Capitol Dr.  
Shorewood, WI 53211  
Phone: 414.962.8383

FEERICK FUNERALHOME.COM

**Charter SENIOR LIVING, LLC**

Independent & Assisted Living

Enhancing the Human Spirit

10803 North Port Washington Rd. • Mequon  
Call 262-478-2200 to schedule a tour today

**ROMAN ELECTRIC**

Plumbing, Heating & Cooling Residential Work

640 S. 70th St. 414-471-8565

**Arbit ORTHODONTICS**

Complementary New Patient Consultations  
**262-241-0600**

10602 Port Washington Rd., Mequon  
Braces, Invisalign, & Accelerated Orthodontics  
TMJ-TMD

**A.S. Performance IN-HOME PHYSICAL THERAPY**

Annamarie Strehlow Wielgos, PT, DPT  
Doctor of Physical Therapy  
Professional Triathlete  
Lumen Christi Alumni  
Annमारiestrehlow.com  
414-460-2644 • annamarie.strehlow@gmail.com

**GEORGE "Master Barber"**  
Call or Text Geo  
**414-322-0762**

**DEBBY "Women's Haircutting/Color Specialist"**  
Call or Text Deb  
**414-704-1672**

8850 Port Washington Rd, Bayside  
CHAIR RENTAL

**WARSHAFSKY LAW FIRM**

WARSHAFSKY • ROTTER • TARNOFF & BLOCH, S.C.

Injured? It is about the money  
[www.warshafsky.com](http://www.warshafsky.com)  
Frank Crivello, Parish Member

**Milwaukee ENT Hearing Aid Center**

Anne Jaramillo, Au.D., Audiologist/Parishioner  
Mequon, WI  
**262-241-8000**  
[www.milwaukeehearingaid.com](http://www.milwaukeehearingaid.com)

**Savings & care 24/7/365**

Call, click or stop by today

**State Farm**

**Joe Woelfle ChFC® Agent**

1714 W Mequon Rd  
Mequon, WI 53092  
Bus: 262-241-8292  
[www.insuremke.com](http://www.insuremke.com)

**Elizabeth Residence**  
Assisted Living Community

**Luxurious Senior Apartments**  
Specialized Services Available

9279 N. Port Washington Rd. | Bayside, WI Please Call For Tour  
**(414) 351-1213**  
[www.elizabethresidence.com](http://www.elizabethresidence.com)  
Family Owned and Operated Community

**HEALTH IN BALANCE**  
PHYSICAL THERAPY AND FITNESS

Improving health. Creating balance. One patient at a time.

Specializing in the treatment of neck and back pain, sports injuries, headaches and TMJ pain, pre and postnatal pain syndromes, and all other orthopedic diagnoses

Offering personal training services, yoga classes, and gym memberships too!

7602 W Mequon Road, Mequon  
**262-236-0176**

**Trinity Prayer Shawls**

Brenda Manning  
**262-385-4343**  
trinityprayershawls@gmail.com  
Made with Love and Prayers

**SOVEREIGN SELECT LLC**  
INSURANCE SOLUTIONS

Tom Qualley President

Independent Solutions for Independent People!

**Services we offer:**

- Medicare Health and Drug Plans
- Individual Health Insurance
- Life Insurance
- Dental/Vision Insurance

Class is in session! Learn the A, B, C, D's of Medicare at [TheRoadtoMedicare.com](http://TheRoadtoMedicare.com)

Contact our office for FREE information at (262) 641-4111, [info@sovselect.com](mailto:info@sovselect.com)

or visit us on the web at [www.sovselect.com](http://www.sovselect.com)

1339 W Mequon Road  
Mequon, WI 53092

\*Sovereign Select does not represent Medicare or any other government agency  
\*By contacting Sovereign Select you may be transferred to a licensed insurance agent  
\*We do not offer every plan available in your area. Any information we provide is limited to those plans we do offer in your area. Please contact Medicare.gov or 1-800-MEDICARE to get information on all your options.

**BURKE CANDY**

Your go-to for hostess gifts, birthday gifts, corporate gifts and more!  
Even something special for you!

**DOES YOUR NONPROFIT ORGANIZATION NEED A NEWSLETTER?**

Engaging, ad-supported print and digital newsletters to reach your community.

Visit [lpicommunities.com](http://lpicommunities.com)

OUR COMMUNITY NEWSLETTER  
OCTOBER EDITION

Scan to contact us!

**GEIDEL & SON, INC.**

4th Generation Carpenter Contractors  
"Quality" Tradition Since 1917

Carpentry • Cabinets • Additions • Bathrooms  
Kitchens • Remodeling • Decks • Doors  
Windows • Plans Drawn

State UDC Certified DC-05951086/DCQ-09701043

**Shore Family Dental**

PETER J. SHORE D.D.S.  
Parish Member

238-1500  
250 South Main Street  
Thiensville

**Joe Schwalbach**  
Not your average Joe!

262-366-1153  
[JSchwalbach@FirstWeber.com](mailto:JSchwalbach@FirstWeber.com)  
Parish Member

**MEQUON LAW OFFICES**

Robert E. Holtz, Attorney/CPA  
Parish Family

- Wills • Probate • Real Estate • Living Trusts
- Business • Litigation • Taxes

1001 W. Glen Oaks Lane, Mequon  
(262) 241-1616  
[www.mequonlaw.com](http://www.mequonlaw.com)