

Building Committee Update

Who Does What? Understanding the Roles of Our Committees

As we continue making progress on the church and school project, it's important to understand how different groups are working together in service of the parish's vision. While each council or committee plays a distinct role, all share a commitment to supporting the pastor, listening to the needs of the community, and helping guide our efforts forward.

The Pastoral Council serves as a consultative body to the pastor, offering guidance on how to foster the spiritual life and pastoral growth of the parish. The council focuses on areas such as liturgical participation, faith formation, evangelization, community-building, service, and long-term pastoral planning. Its members include elected parishioners, pastor-appointed representatives, and ex-officio staff or ministry leaders. In short, the Pastoral Council represents the parish community in the project.

The Building Committee is an advisory group formed to study, assess, and recommend solutions for the parish's facility needs which are documented in a master plan. Its responsibilities include identifying priorities from a facilities standpoint, focusing on the technical details, engaging qualified professionals, exploring design and construction options, and proposing projects with strategies that balance parish needs with financial prudence. The committee also coordinates closely with the Archdiocese throughout the design and construction process to ensure alignment with required guidelines and approvals. Members are appointed by the pastor and include individuals with expertise in architecture, engineering, or construction, along with the parish facilities manager serving ex officio. In short, the Building Committee leads the planning and coordination of the design and construction process.

The Finance Council provides oversight of parish finances and helps ensure responsible stewardship of parish resources. It advises the pastor on budgeting, long-term planning, and major financial decisions, including those related to capital improvements. The Council also monitors the progress of incoming campaign funds. In short, the Finance Council ensures financial stewardship and approves major expenditures supported by sound funding strategies.

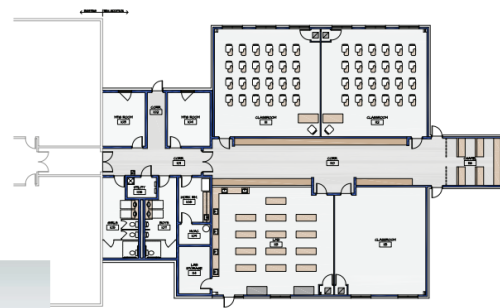
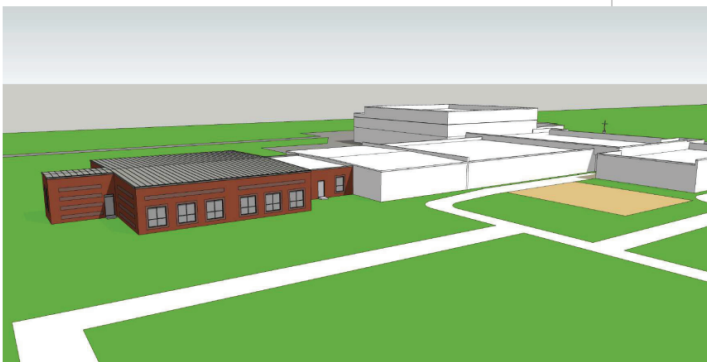
The Capital Campaign Leadership Team is responsible for guiding and executing the parish's capital campaign in close coordination with the pastor and other committees. The team helps shape the campaign strategy, craft key messaging, and organize outreach to engage parishioners and secure financial commitments. Their goal is to build broad support for the project by fostering a spirit of generosity, transparency, and shared purpose. In short, the Campaign Leadership Team drives fundraising efforts and parish engagement.

Next week, we'll take a look ahead as we explore what to expect in the coming months.

Adam Roth
Building Committee Chair



East side of school building



1 FLOOR PLAN
SCALE: 1/8" = 1'-0"

ARCHITECTURAL FIRM