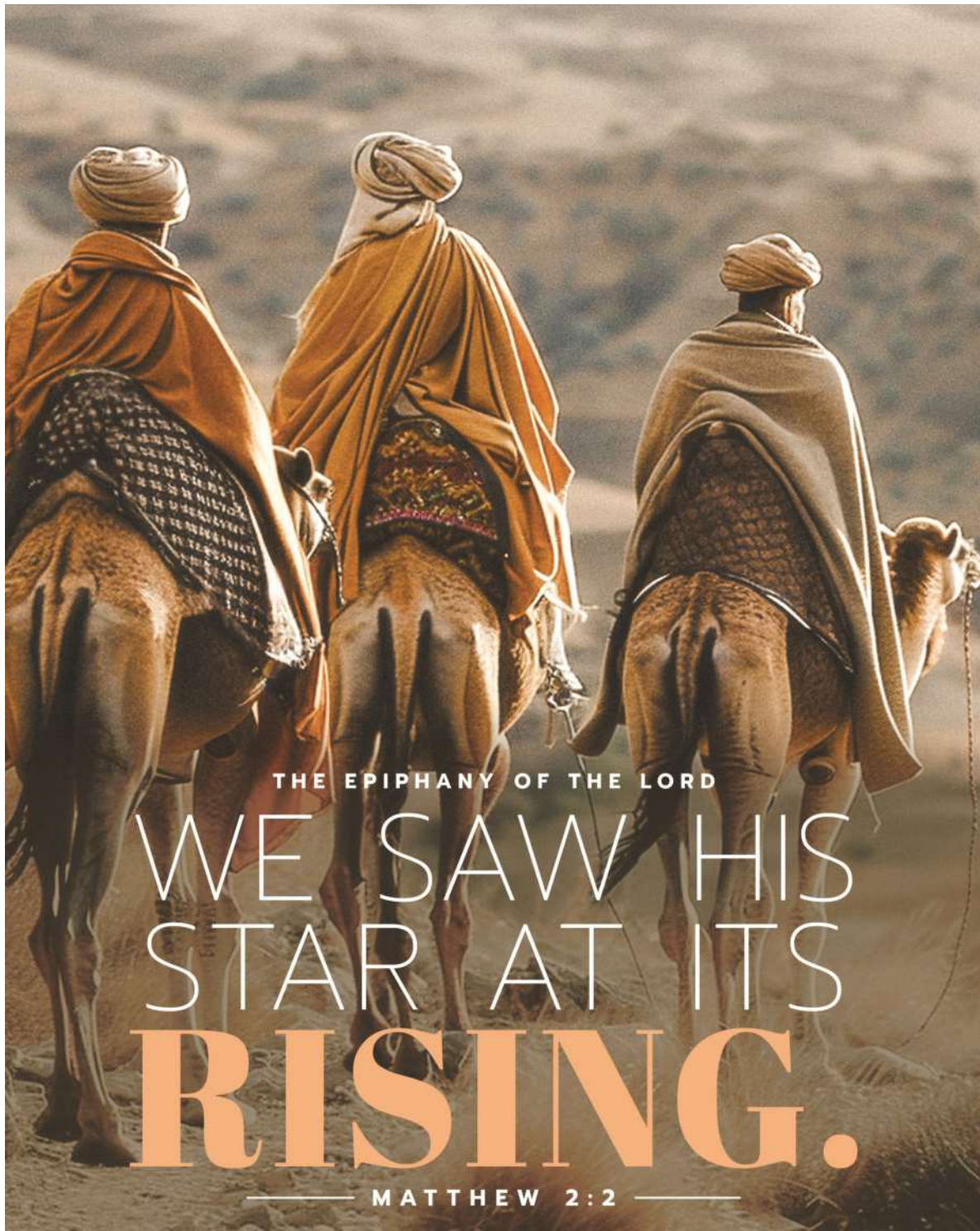


THE CHURCH OF SAINT BONIFACE

817 MASSACHUSETTS AVENUE
LUNENBURG, MA 01462



JANUARY 4, 2026



THE EPIPHANY OF THE LORD

WE SAW HIS
STAR AT ITS
RISING.

— MATTHEW 2:2 —

THE LITURGY OF THE DAY

JANUARY 4, 2026 / THE EPIPHANY OF THE LORD

Isaiah 60:1-6/Ephesians 3:2-3a, 5-6/ Matthew 2:1-12

When Isaiah proclaimed the words we hear today, God's chosen people had just returned to Judah after sixty years of exile in Babylon. The city of Jerusalem was in ruins, the temple had been destroyed, and many of its families had not survived or were still lost. Picture the devastation after a city or region is heavily bombed during a war. "Rise up in splendor," was aspirational at best, unimaginable to most (Isaiah 60:1). Yet Isaiah insists that Jerusalem's light was not only possible, but had already come. Isaiah was able to see God's glory amidst destruction and squalor, as the shepherds and magi could see a king and Messiah in a wooden trough, as we are challenged to see peace, justice, and hope in a world with wars, injustices, and despair. We can choose to try to see through God's eyes, as Isaiah and the magi did.

Question of the Week: What will I do this week to manifest the presence of Christ in me to others?

Gospel Meditation

When I was 22, I went on a pilgrimage to Rome for the Jubilee Year of 2000. I was traveling light with just a backpack, one blue shirt and black pants, little money, and no Italian. I had a few close friends and one goal: to reach the Eternal City. Despite the challenges and deprivations, I felt alive in a way I had never known before.

When do you feel most alive? I'd wager it's not when you're most comfortable or surrounded by stuff. Rather, it's when your life is aimed at something great; when you're on a meaningful and challenging journey with good friends.

That's the image the Magi give us in today's Gospel. They set out from the East not with certainty, but with hope. They study the signs, discipline their attention, and journey together, offering the best they have when they find the newborn King.

The Church gives us their story at the start of the year to reawaken something in us. We are not meant to drift. We're meant to journey as pilgrims. The Jubilee Year of 2025 may have ended, but our pilgrimage has not. Like the magi, the closer we get to Christ, the more alive we become.

– *Father John Muir*
©LPi



**OH COME,
LET US
ADORE HIM.**

Epiphany Blessing

Dear God,

It was You who inspired the Magi to follow the star to find You. Inspire us to seek You, as well. Bless our homes and families this season, make them places where we can encounter You through prayer and community.

Amen.

©LPi

MASS INTENTIONS

JAN 10	4:00 PM	THOMAS DAVIS
JAN 11	8:00 AM	THOMAS COTTER
JAN 25	8:00 AM	WESLEY F LAFORD
APR 26	8:00 AM	HOWARD & ELLA MAY CRANE
MAY 10	8:00 AM	REV. ANDRE GARIEPY
MAY 17	8:00 AM	RICHARD & FRANCES HEBERT
NOV 1	8:00 AM	WESLEY F. LAFORD

Prayer of the Rosary

Every Saturday at 3:30 pm in the church, led by members of the Saint Boniface Knights of Columbus.

Food Donations for the months of January and February will go to Lunenburg Food Pantry. Donations can be placed in the rear of the church. Thank you for your continued generosity.

Grief Share Ministry Announcement

The Grief Share Ministry will begin hosting group meetings this month. Our first gathering will take place on Thursday, January 15, at 6:00 PM in the church (down the hall). Walk-ins are welcome! The meeting will conclude at 7:30 PM. If you plan to attend, please let us know by emailing us at stbonifacegriefgroup@gmail.com. We look forward to welcoming you.

Couples Retreat

Give the gift of retreat! Couples Retreat - Pilgrims of Hope February 13-15, 2026 Holy Family Passionist Retreat Center - West Hartford, CT. Explore our theme, Pilgrims of Hope, together. Holy Family's annual Couples' Retreat includes our Gourmet Valentine's dinner and offers an opportunity to step back from the chaos of everyday life and grow in love, with God and with one another. For more information or to register for retreat visit holyfamilyretreat.org/calendar/couples or call our registrar Ted at 860.760.9705.

Snow Days

If Lunenburg schools are closed or have a delay there will be no daily mass. Stay safe in the snow!

STEWARDSHIP

Dec 14

Sunday	3,050.00
Fuel/Maintenance	70.00
Holy Day	136.00
Flowers	268.00
Christmas Offering	65.00
Religious Retirement	168.00
Total	3,757.00



Scan QR code to donate online



**SAINT
ELIZABETH
ANN SETON**

**FOUNDER OF AMERICAN
CATHOLIC SCHOOLS**

SAINT BONIFACE CHURCH

817 Massachusetts Avenue, Lunenburg, MA 01462
Parish Office: 978-582-4008 email: stbonifaceparish@verizon.net

Discover St. Boniface ~ Visit our website: www.StBoniface-lunenburg.org

Parish Office Hours

Monday / Wednesday 9:00 am – 2:00 pm

The Celebration of the Eucharist

Sunday: 8:00 am, 10:00 am | Saturday Vigil: 4:00 pm
Memorial Day through Labor Day — Sunday: 9:00 am | Saturday Vigil: 4:00 pm
Holy Hour of Adoration: last Wednesday of the month 5:30-6:30 pm
Weekday Masses: 6:30 pm Wednesday | 8:00 am Thursday & Friday

SACRAMENT OF RECONCILIATION (Confession) Saturday 5:00-5:30 p.m. or by appointment.

SACRAMENT OF BAPTISM Adults are baptized at the Easter Vigil as part of the Rite of Christian Initiation of Adults (RCIA). Infant and child Baptisms are by arrangement.

FIRST EUCHARIST Preparation begins in grade one and includes classes, retreats, and home instruction. Children receive First Eucharist in grade two.

CONFIRMATION Our Confirmation program begins in the 9th grade; students are confirmed in the spring of the 10th grade. For young adults who have been baptized but not yet confirmed, contact the parish office.

SACRAMENT OF MATRIMONY It is the policy of the Diocese of Worcester that a couple should contact the parish at least one year prior to the anticipated date of their wedding to allow sufficient time to carry out the various steps of the marriage preparation process. It is important that arrangements be made with the church before plans are made with reception halls, caterers, etc.

ANNOINTING OF THE SICK Please call the parish office 978-582-4008, or email Fr. Omolo at stbonifaceparish@verizon.net or Louise Nadeau at dinalou1@comcast.net to arrange these visits.

PRAYER LINE MINISTRY If you or someone you know needs prayers or if you would like to be a part of this ministry of those who pray for the needs of neighbors, please contact the parish office at 978-582-4008, email stbonifaceparish@verizon.net or contact Louise Nadeau at dinalou1@comcast.net.

KNIGHTS OF COLUMBUS COUNCIL #16480 In Service to One. In Service to all. Members meet in the Parish Hall on the first Wednesday of each month at 7 pm. Any Catholic men over 18 who are interested in joining the Knights should contact Deputy Grand Knight, Thomas Bodkin at tbodkin@bodkinmason.com or (508-363-3422), or email kofc16480@gmail.com.

PARISH STAFF:

	<i>phone</i>	<i>email</i>
Rev. Charles Omolo, Administrator	978-582-4008	stbonifaceparish@verizon.net
Parish Office	978-582-4008	stbonifaceparish@verizon.net
Lucy Marcil, Religious Ed Coordinator	978-502-7993	lmarcil419@gmail.com
Carolyn Farley, Music Ministry	978-621-5352	carolyndiva@comcast.net
Judit Ernst, Organist	978-582-4008	stbonifaceparish@verizon.net
Louise Nadeau, Sacristan		
Ministry Schedule	978-582-4008	stbonifaceparish@verizon.net
Nina Charpentier, Director, Preschool	978-582-7110	ninastboniface@gmail.com

Newcomers to St. Boniface are invited and encouraged to formally register as members of the parish so that we may stay in touch with you with faith formation news, notices of special events, volunteer opportunities, and more.

Registration forms are available at the doors of the church, the parish office, or on our website.

Please note that you must be registered for at least six months before we can issue any verification of your status as a parishioner for godparent or sponsor letters.

Great Big Star

The story of the Wise Men bringing gifts to Jesus, the newborn King, is a great one, isn't it? They had a great big star in the sky to lead the way. I am no Boy Scout, so I am not sure how well I would do following a star like that. But the important point here is that God led them to the manger. The manger was a place that unless God specifically showed you this was where the Christ Child was born you wouldn't have believed it. You would have passed on by.

In our lives, there are no big stars in the sky leading us where we need to go. It isn't so easy sometimes discerning where God is leading us. We may seek to use our gifts wisely, but in what manner and to what end is not always clear.

This is where prayer can make a huge difference. If we seek to cultivate a prayer life where we are mindful of the presence of God throughout our day, then the call is easier to discern. We can help the process by intentionally offering to God in the morning the entirety of the day to come: all our actions, all our time, and all our decisions. In the evening, we can examine the past hours of the day and reflect on when we responded well to Christ's call and when we fell short. Then we resolve to begin again tomorrow, inviting Christ to be with us every step of the way. God may not offer a star in the sky to lead us, but if we invite us on our journey each day, the path will be much clearer.

— Tracy Earl Welliver, MTS

©LPi

EPIPHANY





Serving St. Boniface Families
with Three Convenient Locations

Anderson Family Funeral Homes

Townsend ~ Ayer ~ Fitchburg

Directors: Brian T. Anderson & Michael D. Masciarelli
www.andersonfuneral.com • 800-562-2692



PROCTOR

Excavating & Septic Systems

Site Work
Title V Inspections

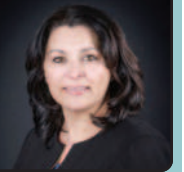
DAN PROCTOR OWNER

978-582-4764



Bonnie Stone Broker, Realtor

Office/Mobile 978-602-5813
BonnieStone@Outlook.com
www.StoneFarmRealEstate.com
Licensed in MA & NH



DOES YOUR NONPROFIT ORGANIZATION NEED A NEWSLETTER?



Engaging,
ad-supported
print and digital
newsletters to reach
your community.

Visit lpicommunities.com



380 ELECTRIC AVE. (RT 13)
LUNENBURG
www.WHALOMWASH.com
978-829-0399
DAN AND JEAN PROCTOR, OWNERS

LET'S GROW YOUR BUSINESS

Place Your Ad Here
and Support Our Parish!

CONTACT ME Joe Dapper

jdapper@4LPi.com
(351) 214-9557 x9557



RESIDENTIAL • COMMERCIAL • INDUSTRIAL
Water Heaters, Heat Pumps, Gas Piping & More!
Repairs and Replacements for all your Plumbing,
Heating and Cooling needs
978-660-0107 • pierceplumbingandheating.com
LEOMINSTER, MA



Alario & Associates,
CPA, PC
75 N. Main St., Leominster, MA 01453
978-534-1999
Fax: 978-534-0499
www.alariocpa.com
Bob@alariocpa.com

ANNA'S TABLE

Open for Sunday Brunch
10am - 3pm

16 Brooks Pond Rd.
Leominster, MA 01453
(978) 840-2662



BODKIN & MASON, LLP

NEW ENGLAND PERSONAL INJURY ATTORNEYS

508-459-6253

PARISHIONER THOMAS W. BODKIN JR., ESQ.

bodkinmason.com

37 MECHANIC STREET, SUITE 200, WORCESTER, MA 01608



Proudly Serving
St. Boniface Parish
Matt Proctor



Automatic
Delivery
Budget
Programs



978-342-9716
WWW.THOMASFUEL.NET



JAMIE TOALE SUPPORTIVE BUSINESS ALTERNATIVES

Small Business Management | Consulting
Interim Management | Special Projects | Coaching
Municipal Government Specialties

617-365-4612 | jamie@jamietoale.com | www.jamietoale.com

St. Boniface Pre-School & Childcare



Children Ages
2.9 through 6 years
Open 7:30 am-5:30 pm
817 Massachusetts Avenue
Lunenburg, MA 01462
978-582-7110

IF YOU LIVE ALONE

MDMedAlert!™ STARTING AT
\$19⁹⁵
At HOME and AWAY!
/mo.

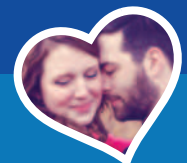
- ✓ Ambulance/Police
- ✓ Family/Friends
- ✓ GPS & Fall Alert

CALL NOW! **800.809.3570**

md-medalert.com



catholicmatch® Massachusetts



CatholicMatch.com/MA



Ad info. 1-800-477-4574 • Publication Support 1-800-888-4574 • www.4lpi.com

St. Boniface, Lunenburg, MA

03-1376