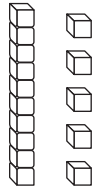


- 1** Look at the model of 15.



Write how many tens and ones are in the model.

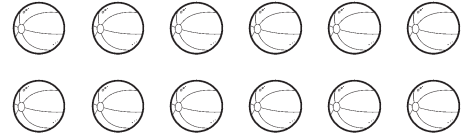
_____ ten _____ ones

- 2** Write how many tens and ones are in 12.

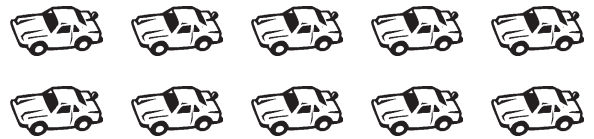
_____ ten _____ ones

- 3** Draw tens and ones to show 13.

- 4** Circle a group of ten to show 1 ten and some ones.



- 5** Write how many tens are the same as 10 ones.



10 ones = _____ ten

- 6** Compare using $<$, $>$, or $=$.

12 \bigcirc 15

7 Subtract.

$$15 - 8 = \underline{\hspace{2cm}}$$

8 Add.

$$8 + 2 + 6 = \underline{\hspace{2cm}}$$

9 Subtract.

$$18 - 9 = \underline{\hspace{2cm}}$$

10 Add.

$$6 + 4 + 7 = \underline{\hspace{2cm}}$$

11 If $5 + 6 = 11$, then

$$11 - \underline{\hspace{2cm}} = 6.$$

12 If $17 - 9 = 8$, then

$$\underline{\hspace{2cm}} + 9 = 17.$$

13 $8 + 7 = \underline{\hspace{2cm}}$

is the same as

$7 + \underline{\hspace{2cm}} + 1 = \underline{\hspace{2cm}}.$

14 $3 + 4 = \underline{\hspace{2cm}}$

is the same as

$3 + \underline{\hspace{2cm}} + 1 = \underline{\hspace{2cm}}.$

15 Add.

$9 + 1 + 7 = \underline{\hspace{2cm}}$

16 $12 - 4 = \square$

is the same as

$12 - \underline{\hspace{2cm}} - 2 = \square$

So, $12 - 4 = \underline{\hspace{2cm}}.$

17 Subtract.

$60 - 50 = \underline{\hspace{2cm}}$

18 If $3 + 4 + 6 = 13$, then

$3 + \underline{\hspace{2cm}} = 13.$

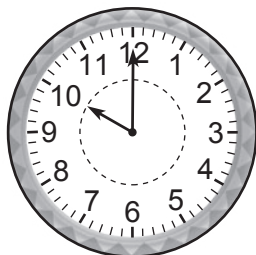
19 Add.

$$\begin{array}{r} 66 \\ + 9 \\ \hline \square \end{array}$$

20 Add.

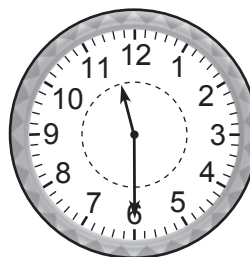
$$68 + 20 = \underline{\hspace{2cm}}$$

21 Write the time.



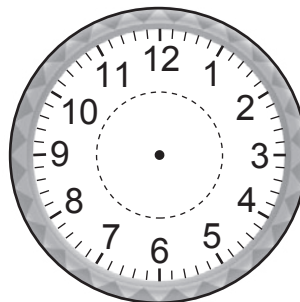
_____ : _____

22 Write the time.

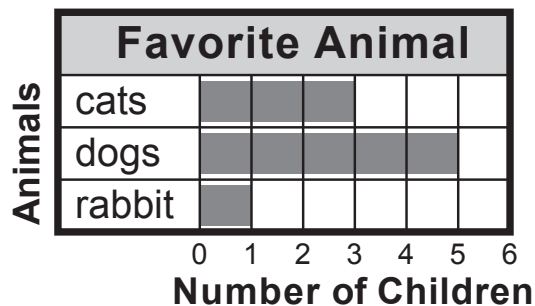


_____ : _____

23 Draw hands to show 3:30 on the clock.



24 Use the bar graph.

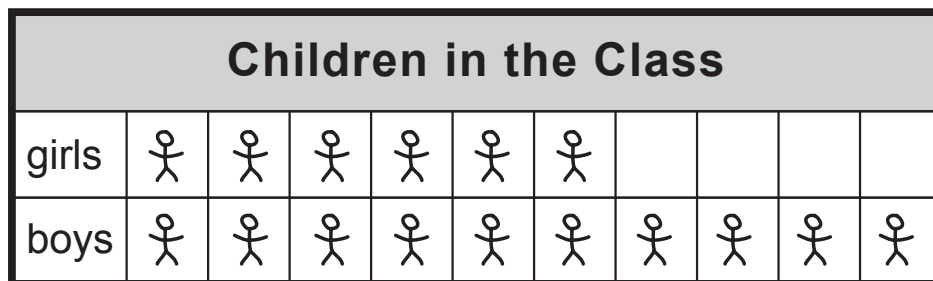


How many children chose dogs?

_____ children

GO ON

Use the picture graph for questions 25–26.



Each  stands for 1 child.

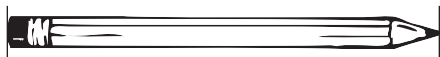
- 25** How many children are in the class?

_____ children

- 26** How many fewer girls are there than boys?

_____ fewer girls

- 27** Use . About how long is the pencil?



about _____  long

- 28** Use . Draw a line that is about 3  long.




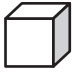
- 29** Draw three lines in order from **longest** to **shortest**.

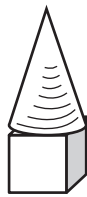
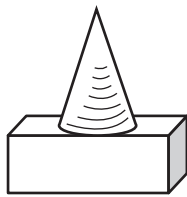
longest	
shortest	

- 30** A pencil is longer than a marker.
The marker is longer than a crayon.



Write **shorter** or **longer** to finish the sentence.

The pencil is _____ than the crayon.

- 31** Combine  and .
Circle the new shape you can make.



- 32** Use pattern blocks.
Draw to show the blocks.

How many  make a
 ?

_____  make a .

- 33** Write the number of
equal shares.



_____ equal shares

