

VIKING VOICE: November 5, 2025

1 message

St. Philip Neri Catholic School <richardhill@stphilipnerschool.ccsend.com>
Reply-To: rhill@stphilipneri.org
To: rhill@stphilipneri.org

Wed, Nov 5, 2025 at 10:56 AM

The Viking Voice



[School Website](#)

[School Facebook](#)

[Parish Website](#)

[Parish Bulletin](#)

[Clarion Herald](#)

November 5, 2025 | Vol. 7, Issue 13



UPCOMING EVENTS

5	NOV, WED	● All day ● All day	National Vocation Awareness Week (Day 3/5) School Mass at "9AM" (K begins to attend)
6	NOV, THU	● All day ● All day	National Vocation Awareness Week (Day 4/5) Men's Club Meeting
7	NOV, FRI	● All day ● All day ● All day	National Vocation Awareness Week (Day 5/5) First Friday Devotion Sock Hop
8	NOV, SAT	● All day	First Reconciliation at "10AM"
11	NOV, TUE	● All day	Co-Op Membership Meeting
12	NOV, WED	● All day	School Mass at "9AM"
13	NOV, THU	● All day	NOLA Hamburger (GPC Partnership)
15	NOV, SAT	● All day	Sip and Shop
17	NOV, MON	● All day	Thanksgiving Food Drive (Day 1/5)
18	NOV, TUE	● All day	Thanksgiving Food Drive (Day 2/5)
19	NOV, WED	● All day ● All day ● All day	Thanksgiving Food Drive (Day 3/5) Faculty Meeting at "4PM" School Mass at "9AM"
20	NOV, THU	● All day ● All day	Thanksgiving Food Drive (Day 4/5) Airline Skate Night (Co-Op Partnership)
21	NOV, FRI	● All day ● All day ● All day ● All day	Thanksgiving Food Drive (Day 5/5) ELC dismisses at "11AM" Fall Parent-Teacher Conferences "12:45-3:05PM" School dismisses at "12PM"



Correction

Please join us in congratulating **Alice Dubourg** for making the "Beta or Better" Honor Roll in the First Quarter.

We mistakenly left Alice's name off the initial post. We regret this error.

ATTENTION ALL BEGINNING CHOIR
SINGERS, PAST & PRESENT

(ADVANCED CHOIR PARTICIPATION IS
CONTINGENT ON BEGINNING CHOIR
PARTICIPATION)

JOIN ADVANCED CHOIR!

SIGN UP DEADLINE
FRIDAY, NOV. 7TH, 3PM

REHEARSALS EACH
MONDAY, 3:30 - 4:10
STARTING DEC. 1ST



**SOLO AUDITIONS, MON.
NOV. 10TH, 4:15 - 4:35**

SIGN UP BY SCANNING THE QR CODE OR

[HTTPS://FORMS.GLE/KTZKSI2J8M72XRD3A](https://forms.gle/KTZKSI2J8M72XRD3A)





ST. PHILIP NERI VIKING CHEERLEADERS

Christmas Poinsettia Fundraiser

The holiday season is around the corner, and we are selling poinsettias to help with our upcoming cheer season. These vibrant blooms make perfect gifts and add a festive pop to your Christmas decor.

Size options:

6.5", 8", 10"
POTS WITH COVER

FLORIST QUALITY
RED POINSETTIAS

LOCALLY GROWN BY
PERINO'S GARDEN CENTER.



**Pick up from the
Parishoner's Center
Monday 11/17**

**Time:
5:00pm - 8:00pm**

**PRICES START AT \$11
ORDERS DUE: FRIDAY, NOVEMBER 7TH**

**LINK TO ORDER:
SPN - Purchase Poinsettia**

Click here to order poinsettias



Dear parents,

Get ready! The Scholastic Book Fair is coming our way (YAY!). Choosing their own books empowers kids and inspires them to become Bolder, Prouder, and Stronger Readers. AND—as always—every book they buy earns rewards for our school.

Here's what you need to know about the Fair, which will take place from November 3rd-7th in the Library:

This year, say goodbye to cash and hello to **eWallet**—your child's digital payment account. Before the Fair, set up eWallet for worry-free, cash-free purchases. Anyone can contribute! Share each child's eWallet so friends and family can add funds and give your kids more books to enjoy.

Parents are welcome to shop the fair with their children during the classes scheduled date and time. *The schedule can be found on the back of this page.* **PK3 and PK4 students will visit the Book Fair only if accompanied by a parent or grandparent.**

If you can't make it to the Fair, then **shop at our school's Online Book Fair**. All orders ship directly to your home, and shipping is free for book orders over \$25. Your online orders will also benefit our school.

Visit our Book Fair homepage to learn more and get started with eWallet and online shopping:

<https://www.scholastic.com/bf/stphilipnerschool2>

Happy Reading!

Jennifer Allen

Librarian

Book Fair Schedule

Monday
Nov. 3rd

Tuesday
Nov. 4th

Wednesday
Nov. 5th

Thursday
Nov. 6th

Friday
Nov. 7th

9:00 AM	PK3C		PK3A	PK3B	
9:30 AM	PK4C	1C	PK4A	PK4B	KC
10:05 AM	KB	KA	2C	2B	2A
12:55 PM	1B	1A	5C	5B	5A
1:45 PM	3B	3A/3C	6C	6B	6A
2:35 PM	4B	4A	4C	7B	7A

COMPLETING THE DREAM AND OPENING HEAVEN

Making Heaven
visibly alive for
our children!

COME JOIN US IN
THIS MISSION!

AND THE WORD BECAME FLESH

SCAN FOR INFO
spnparish.net/dream



[Click here to learn more and to contribute!](#)

CO-OP CORNER

Join us for a



**St. Philip Neri
Ladies' Cooperative Club**

THE ONE WHERE WE GIVE THANKS

**November 11th
7 P.M.**

Dinner and Drinks Provided

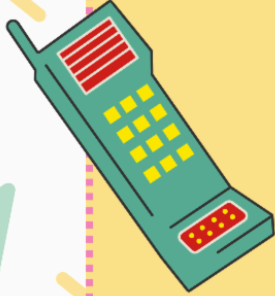
GUEST SPEAKER:

LISA D. GUNTER DNP

ACCESS PEDIATRICS

90S TRIVIA TO FOLLOW





SPN LADIES' COOPERATIVE



VOLUNTEER INCENTIVES

\$2500 TUITION RAFFLE

TWO SEPARATE WINNERS
15 HOURS REQUIRED FOR ENTRY
MUST BE AN ACTIVE COOPERATIVE MEMBER
DRAWING IS HELD AT LAST MEETING

OVER & ABOVE VOLUNTEER RAFFLE

\$100 BRONZE RAFFLE
16-20 HOURS VOLUNTEERED

\$200 SILVER RAFFLE
21-25 HOURS VOLUNTEERED

\$300 GOLD RAFFLE
26+ HOURS VOLUNTEERED

EXAMPLE VOLUNTEER OPPORTUNITIES:

ATTEND A BUSINESS MEETING = 2 HRS

SERVE AS A ROOM CAPTAIN = 5 HRS

SERVE AS AN EVENT COMMITTEE HEAD = 10 HRS

** MANY MORE HOURS AVAILABLE AT COOPERATIVE FUNDRAISERS AND EVENTS

NEXT BUSINESS MEETING:

NOVEMBER 11TH 2025

MEMBERSHIP DUES: \$60



[Click here for Membership](#)

ST. PHILIP NERI
LADIES' COOPERATIVE CLUB
PRESENTS:



MERRY & MINGLE

SPN'S CRAFT FAIR

15 NOVEMBER 2025
10AM-3PM
SPN PARISHONER'S CENTER
6600 KAWANEE AVE.

ENJOY HANDMADE CRAFTS,
FESTIVE FOOD, AND A WHOLE
LOT OF HOLIDAY CHEER. DON'T
MISS OUT—BRING A FRIEND AND
GET INTO THE HOLIDAY SPIRIT!



NOVEMBER EVENTS

ST. PHILIP NERI
LADIES' COOPERATIVE CLUB
PRESENTS:



MERRY & MINGLE

SPN'S CRAFT FAIR

15 NOVEMBER 2025
10AM-3PM
SPN PARISHONER'S CENTER
6600 KAWANEE AVE.

ENJOY HANDMADE CRAFTS,
FESTIVE FOOD, AND A WHOLE
LOT OF HOLIDAY CHEER. DON'T
MISS OUT—BRING A FRIEND AND
GET INTO THE HOLIDAY SPIRIT!



ST. PHILIP NERI'S
LADIES' COOPERATIVE CLUB



THANKSGIVING Food Drive



NOVEMBER 17-21
COLLECTION BOXES WILL BE IN THE CLASSROOMS

JOIN US IN HELPING OUR COMMUNITY IN NEED!

Please contribute foods like canned vegetables, stuffing mix, gravy packets, canned pumpkin, cranberry sauce, and broth to help complete a Thanksgiving meal.

DONATE NOVEMBER 17TH -21ST FOR YOUR CHILD TO RECEIVE
A SCHOOL SPIRIT SHIRT DRESS DOWN DAY ON FRIDAY NOV. 21ST





SPN GIVE BACK NIGHT

AIRLINE SKATE

THURSDAY,
NOV 20, 2025
6:30-8:30PM

\$8
PER SKATER
*INCLUDES SKATE RENTAL

Airline Skate
Center
6711 Airline Dr.


ST. PHILIP NERI'S
LADIES' COOPERATIVE CLUB

SPAGHETTI DINNER WITH BUDDY THE ELF

NOV. 29TH

5:30P.M. - 8:00P.M.
St. Philip Neri
Parishoners' Center

Ticket Presale:
Adult \$15/Child \$8
Includes: 1 dinner plate
& 1 soft drink/water
ends November 23rd



JOIN US FOR A NIGHT OF HOLIDAY CHEER, CRAFTS,
ACTIVITIES, AND SPECIAL GUESTS!

SEE YOU THERE!
LOVE,
Your favorite elf



SPN Ladies' Cooperative Year at a Glance

Upcoming Volunteer Opportunities:

11/11 2nd Ladies' Co-op Meeting
Set Up/ Break Down
11/15 Merry & Mingle Set Up/ Break Down
11/21 Food Drive Collection
11/29 Buddy The Elf Event

November:

11/11 2nd Ladies'
Co-op Meeting
11/15 Merry & Mingle
11/17-21 Food Drive
11/20 Airline Skate
11/29 Buddy The Elf

December:

12/09
Adopt an Angel
Donations Due
12/12 Ladies' Cooperative
Club Luncheon
12/31 Noon Year's Eve

2026:

1/23 Krewe of Vikings Game Night
2/10 Ladies' Cooperative Member Meeting
3/6 City Park Night
3/21 Social & Auction
4/14 Ladies' Cooperative Member Meeting
5/21 SPN Night at GameON

ST. PHILIP NERI
MEN'S CLUB



NEXT MEETING

THURSDAY NOVEMBER, 6TH

DOORS OPEN AT 6:30 PM

**COMEDY NIGHT FEATURING:
JAMES CUSIMANO & JD SLEDGE**

UPCOMING

TROY "DADDIO" DROUANT LEGACY GOLF CLASSIC

MONDAY, NOVEMBER 24TH

CHATEAU CC

GRANDPARENTS CLUB COTTAGE

Support Our School



featuring

Saint Philip Neri's Grandparents Club

November 13th

NOHSC will tally receipts from your guests attending the FUNdraiser and donate 20% of the net sales.

The more attendees from your school, the larger the donation will be. Please mention Saint Philip Neri when placing order. Offer valid for lunch and dinner.



6920 Veterans Memorial Blvd Metairie, LA 70003

SCOUTING SHED

COMING
SOON

PARISH PAVILION



FAMILY MASS- LAST SUNDAY OF EACH MONTH

The 9AM Parish Mass on the last Sunday of each month is "Family Mass". Please join the SPN community for these special Masses and enjoy coffee and donuts afterward!

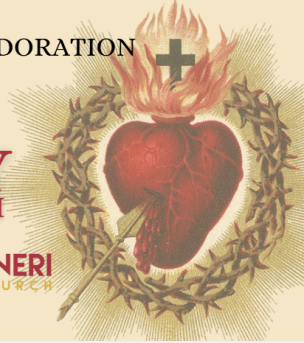
FIRST FRIDAY DEVOTION

TO THE SACRED HEART OF JESUS

6:15AM - MASS
7AM - 8:45AM - ADORATION
9AM - MASS

FIRST
FRIDAY
OF THE MONTH

 ST. PHILIP NERI
CATHOLIC CHURCH



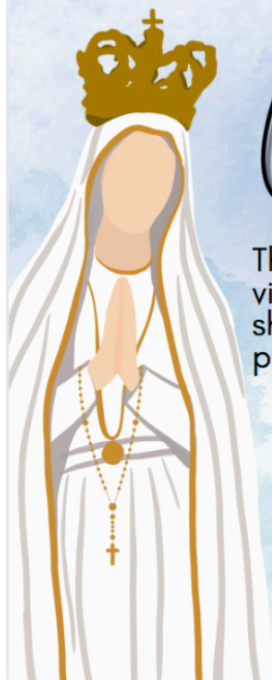
FIRST SATURDAY DEVOTION

TO THE IMMACULATE HEART OF MARY

*1st Saturday
of the month*

8-8:45AM - Confessions
8:30AM - Rosary
9:00AM - Mass

 ST. PHILIP NERI
CATHOLIC CHURCH



Our Lady of Fatima HOME VISITS

The statue of Our Lady of Fatima has started her journey of visiting the homes of our St. Philip Neri Families! Each weekend she will be given to a new family & stay for one week as they pray the Rosary together for peace & other special intentions.

WOULD YOUR FAMILY LIKE TO
WELCOME OUR LADY IN YOUR HOME?



Scan for more info or go to
SPNPARISH.NET/FATIMA

Never Miss Our Bulletin!




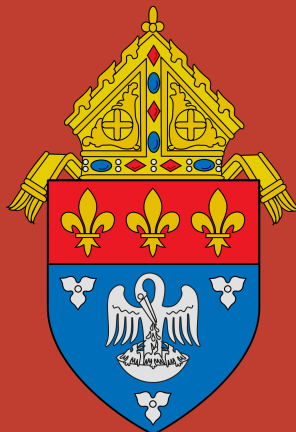
Have it emailed to you automatically every week.

1

Go to ParishesOnline.com and enter our parish in the search.

2

Click the  **Subscribe** button on our parish page.



[Unsubscribe](#) | [Update Profile](#) | [Constant Contact Data Notice](#)



Try email marketing for free today!