

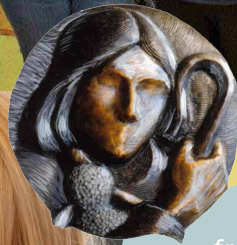
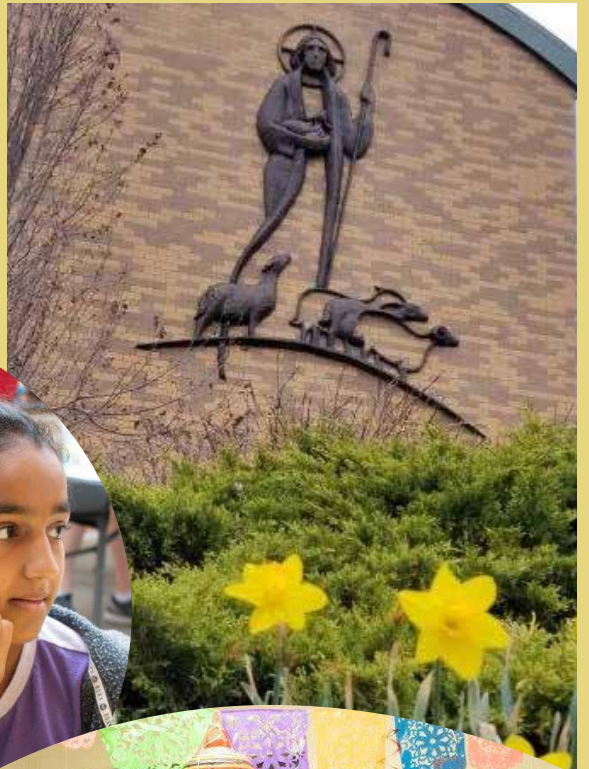
GOOD SHEPHERD

CATHOLIC COMMUNITY

WE ARE

Amazing

and Resilient



What I know from experience is that you will find extremely welcoming and grateful people as I have when you come aboard. I read Pope John Paul II annually asked himself "What is God asking of me now?" That's a pretty good question for each of us to think and pray about ourselves! Steve I.

It's been fun but it's also great to spend some time with friends and accomplish something that helps out in the community. K.M.



Stewardship is how we say "I love you" to fellow parishioners. It is our faith in action. And you, my fellow members, had you not been willing to share your Time, Talent and Treasure, this community would not be what it is today, filled with Good Shepherd Spirit which is very much alive. Dave M



When we came [to Good Shepherd] I was impressed with the number of people greeting each other and visiting. I felt like I had just come home. This isn't about the building where we meet....it's about each of us sharing our special gifts, our talents, our love. P.M.



If we are to flourish and grow, our parish needs all of us to share our voices, our gifts, our time and our energies. C.M.





NUMBERS *to highlight*

595 Mass Celebrated

72 Baptized

100 First Communicants

18 Quinceaneras

11 Weddings

14 Funerals

1921 Registered families

99 New Families welcomed

OUR SCHOOL

284 Students enrolled in Religious Education

335 Students attending Good Shepherd School, PreK-8

OUR GENEROSITY

\$728,350 Shared by parish families and spent in service to others outside this community (includes Call to Share)

4,848 Meals served to the hungry

14,800 Pounds of food collected for people in need AND \$8,995

We sponsor many outreaches to Advice & Aid, Christ the King School (KCK), Catholic Charities, Catholic Relief Services, Community Blood Center, Food Kitchen, Newhouse, Shawanoe Elementary School, Unbound, Uplift – and many more!

We walk with El Buen Pastor in El Salvador, our sister parish of 33 years, providing scholarships, medications and support for regional and community projects.



virtual

In an uncertain environment, the digital world was successfully introduced, a new way of being “church”. Facebook and YouTube connected us.

THE NUMBER OF ONLINE VIEWS IS AMAZING!

ONLINE Views since March:

59,494	MASSSES
6,312	CHOIR CONCERTS
4,150	TUESDAY NIGHTS LIVE VIEWS
18,600	CHURCH CHAT WITH THE PRIESTS
7,093	BIBLE STUDY
3,442	ROSARY
99,091	TOTAL ONLINE VIEWS SINCE MARCH

ONLINE Communications:

63,000	STUDENT LEARNING HOURS
12,000	BULLETIN REACHES (VIA FLOCKNOTES)

THANK YOU
for your support and generosity.



WE LOVE GOOD SHEPHERD!

The year did end in an uncertain environment, but we only grew in our resourcefulness and resilience. We found new ways to be church, ways we never before imagined! THANK YOU for your prayerfulness, your resourcefulness, your patience and faithful sharing of gifts and resources. We are filled with hope and inspiration for the year ahead – *because of you!*



WE ARE AN AWESOME COMMUNITY

SHARING THE JOY FROM OUR COMMUNITY

"On behalf of the Shawnee community, I thank you for the donation of coats, hats, gloves, socks and underwear. As we approach the winter months, these items will go to students in need and we are so appreciative to be able to provide this to them. Thank you for the generosity and kindness shown our school!" Shawnee Elementary School Social Worker

"Our success and growth have largely been due to the solid foundation that Good Shepherd parishioners have provided for the past 18 years – hundreds of students have benefited." The Learning Club

"I am so grateful for the wonderful support our school has received from the parishioners at Good Shepherd. We were planning on using any money for a new table and chairs for the teachers' lounge, But when our laminating machine broke, that's what we will replace. We are so blessed to have friends like you." Christ the King Principal

"Everyone loved the cookies. They were sincerely touched by the message "you are loved" on the package. Many were choked up and everyone told us how much they appreciated then. Thank you!" Uplift volunteer

Non-Profit Org.
U.S. POSTAGE
PAID
OLATHE, KS
PERMIT NO. 32

GOOD SHEPHERD CATHOLIC COMMUNITY
12800 West 75th Street
Shawnee, Kansas 66216