



DEPARTMENT OF  
**CATHOLIC SCHOOLS**  
DIOCESE OF SANTA ROSA

2023-2024

# Elementary Enrollment (TK-8)

	2013	2014	2015	2016	2017	2018	2019	2020	2021	2022	2023	Percent Catholic
St. Apollinaris	275	310	306	306	301	305	287	304	323	339	332	83% (down3%)
St. Bernard	132	117	*K-6 closed. Pre, 7, 8 reported with HS.				59 (P,7,8)	83 (P,6,7,8)	88	95	106	30% (up was 21%)
St. Eugene	299	289	287	285	283	287	267	235	242	64	86	93% (down 2%)
St. Francis	202	184	177	185	185	195	188	174	182	192	192	57% (up was 53%)
St. Helena	76	74	80	71	55							
St. John - Healdsburg	218	218	223	230	226	209	197	240	289	284	293	71% (same)
St. John - Napa	169	154	144	154	141	95	97					
Kolbe-Trinity	69	71	76	72	66	88	82	91	125	132	114	96% (same)
St. Mary	197	200	203	197	189	156	160	150	166	152	157	52% (same)
St. Rose	296	296	267	270	312	288	292	248	294	322	335	70% (up from 59%)
St. Vincent	274	275	265	219	151	144	147	158	181	181	191	82% (up was 78%)
San Jose Sanchez Del Rio								18	19	14	7	100% (same)
Totals	2214	2196	2028	1989	1962	1767	1776	1701	1909	1775	1806	65% (down 4%)

# High School Enrollment (9-12)

	2013	2014	2015	2016	2017	2018	2019	2020	2021	2022	2023	Percent Catholic
Archbishop Hanna	93	90	107	88	80	87	80	47	39			
Cardinal Newman	625	609	609	621	619	569	587	572	512	567	550	53% (same)
Justin-Siena	673	671	658	626	581	555	541	549	601	614	657	53% (up)
St. Bernard	139	146	216*	138*	190*	170*	159	156	158	173	199	18% (same)
St. Vincent	316	310	288	259	235	213	192	161	167	180	169	55%
Kolbe-Trinity	35	27	28	25	24	26	30	29	22	25	30	97% (up)
Totals	1881	1853	1906	1757	1729	1620	1589	1514	1499	1559	1607	49% (down 2%)

# Total Enrollment

(elementary and high school)

	2013	2014	2015	2016	2017	2018	2019	2020	2021	2022	2023	Percent Catholic
Total Enrolment	4095	4049	3934	3746	3691	3387	3365	3215	3408	3334	3413	58% (down)

# Enrollment in Schools and Parish Religious Education

(school numbers reflect 2023-2024, parish numbers 2022-2023)

School	School Students	CCD Students
St. Apollinaris	332	237
St. Bernard	106	16
St. Eugene	86	160
St. Francis	192	105
St. John - Healdsburg	293	254
Kolbe-Trinity	114	0
St. Mary	157	441
St. Rose	335	668
St. Vincent	191	361
San Jose Sanchez Del Rio	7	92
Elementary and junior high totals	1806	4224 (all parishes)
High Schools totals	1607	728
Total	3413	4952

Who are we serving in our CCD communities?

What are we doing to connect parish and school students to understand they are the church of tomorrow?

# Teacher Profile for the Diocese of Santa Rosa vs. National Average

## Diocese of Santa Rosa

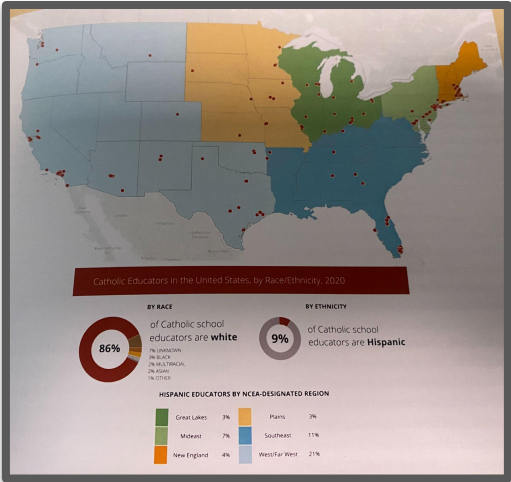
Elementary	Catholic	Non-Catholic	Unknown	Total	
White	77	21	22	120	
Hispanic	14	0	0	0	
Total	91	21	22	134	68% Catholic
High School	Catholic	Non-Catholic	Total		
White	79	48	127		
Hispanic	16	1	17		
	95	49	144		66% Catholic

## National Average

Catholic The national average for **Catholic** teachers working in Catholic schools in the US is **75%**. (NCEA).

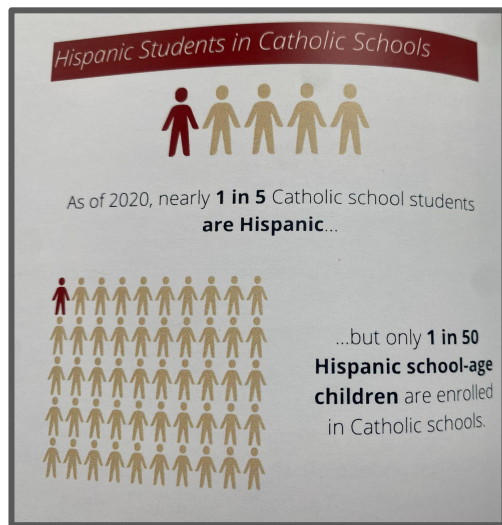
Ethnicity~ **86% White**

(image from Boston College)



# Hispanic Students in Catholic Schools

The growth of Hispanic Catholics in American **churches** is transforming our parishes. Catholic schools need to strategize to serve our Catholic population. Is your website in Spanish? Do you have Spanish speaking staff? Are you teachers prepared to teach bilingual students?



(Boston College)

## Diocese of Santa Rosa Catholic Schools Students

716 of 3413 Hispanic (20%)

2433 of 3413 White (71%)

## Diocese of Santa Rosa Catholic School Teachers

31 of 278 Hispanic (11%)

## Diocese of Santa Rosa Priests

15 out of the 117 priests are Hispanic in the Diocese of Santa Rosa.

## Diocese of Santa Rosa Parishioners

2022: 45% (12,349 Spanish from total of all parishioners 27,369)

2023: 48% (15,107 Spanish from total of all parishioners 31,245)

# Aquinas

The Aquinas Fund was created to provide a need-based scholarship for Catholic students attending a Catholic **elementary school** within the Diocese of Santa Rosa. Over the years, hundreds of people who know the value and many blessings that come with a Catholic education have generously donated to this fund. Each spring, Catholic families may apply for scholarships to be awarded in the upcoming school year. Scholarships are awarded based on a number of factors, including financial need, school endorsements, number of applicants, and monies available in the Aquinas Fund.

In the spring of 2023, we were able to award \$91,000 to 186 students for tuition assistance from the fund. (each student was awarded \$490 toward tuition assistance)

School		# of students awarded	Total for school	Percent served
Saint Mary	Ukiah	23	11,178	14%
Saint John the Baptist	Healdsburg	25	12,150	8%
Saint Eugene	Santa Rosa	28	13,608	32%
Saint Rose	Santa Rosa	4	1,944	1%
Saint Vincent	Petaluma	16	7,776	8%
Saint Francis	Sonoma	31	15,066	16%
Kolbe-Trinity	Napa	29	14,094	25%
Saint Apollinaris	Napa	30	14,580	9%

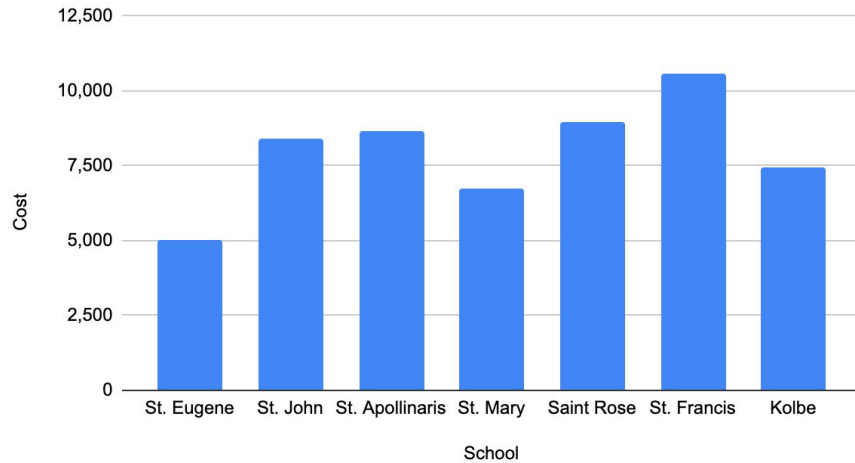


# Tuition Per School

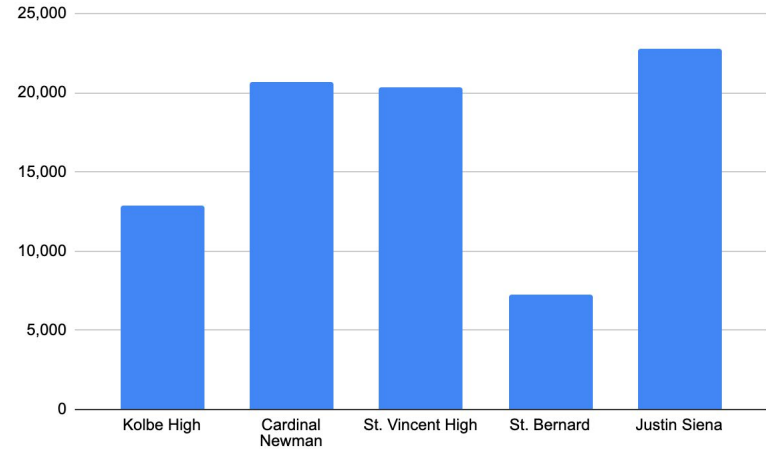
Rates reflect rates posted on websites as of 11/23

## Elementary School

Cost vs. School



## High School



# Tuition

School	Cost
St. Vincent Elementary	10,395
St. Bernard	6,128
St. Eugene	5,000
St. John	8,382
St. Apollinaris	8,650
St. Mary	6,757
Saint Rose	8,950
St. Francis	10,568
Kolbe	7,450
Kolbe High	12,850
Cardinal Newman	20,700
St. Vincent High	20,350
St. Bernard	7,275
Justin Siena	22,750

# Baptisms in the Diocese of Santa Rosa

According to the Official Directory

Year	Baptisms (Infant)
2022	1431
2019	2475
2012	3017

California’s birth rate (births per 1,000 residents) is at its lowest level in more than 100 years.

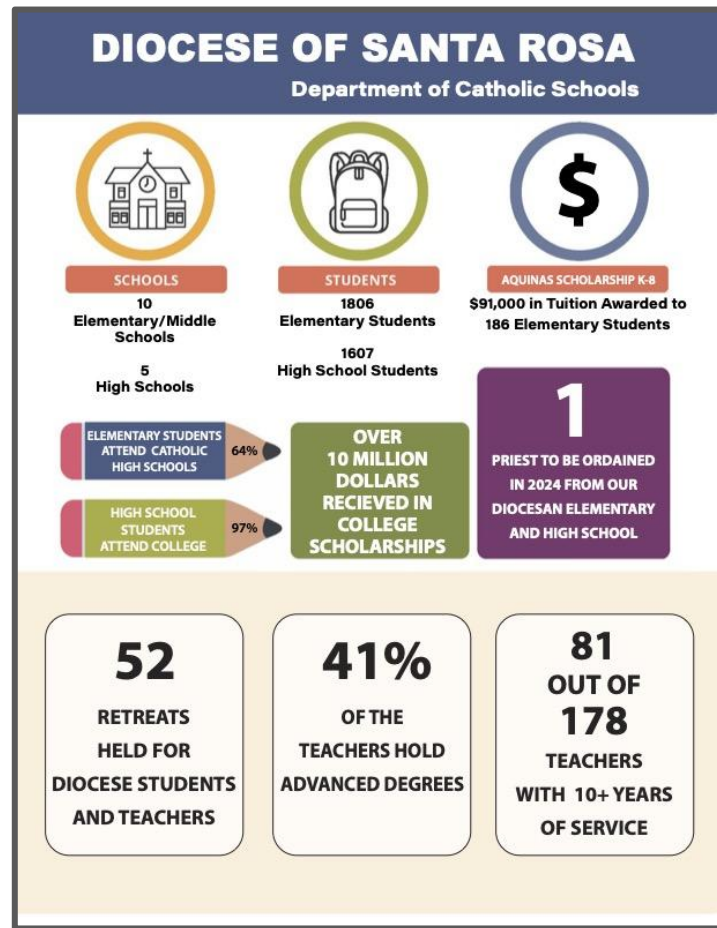
California’s birth rate has reached near-record lows, contributing to a slowdown in the state’s population growth and portending decades of slow growth to come.

What is—and is not—driving the state’s lower birth rates? Economic, social, health, and historical events play a large role in determining family sizes and birth rates.

Fewer children will mean declining K–12 enrollment and more school closures.

\*Public Policy Institute of California

# *School Infographic for the Diocese of Santa Rosa*



# 5th Grade ACRE Level 1 ~ Group Average is Diocese of Santa Rosa

## NCEA IFG: ACRE

PART I SCORE SUMMARY BY THE FOUR PILLARS OF THE CATECHISM OF THE CATHOLIC CHURCH

**School/Parish Name:** Diocese of Santa Rosa (35774)

**Total Students:** 145

**Diocese Name:** Diocese of Santa Rosa (35774)

**Catholic Students:** 112

**Level:** Level 1

**Non-Catholic Students:** 20

**Assessment Year:** Academic Year 2022 - 2023

**Returning Students:** 111

### All Students: 145

Pillar	Averages			
Part I: Profession of Faith (Creed)	Group Average:	14.9 / 21 =	71.0%	Parish Nat'l Avg*:
	Nat'l Average*:	12.6 / 21 =	60.0%	School Nat'l Avg*:
Part II: The Celebration of the Christian Mystery (Liturgy and Sacraments)	Group Average:	7.2 / 12 =	59.8%	Parish Nat'l Avg*:
	Nat'l Average*:	6.6 / 12 =	55.0%	School Nat'l Avg*:
Part III: Life in Christ (Morality)	Group Average:	10.9 / 15 =	72.9%	Parish Nat'l Avg*:
	Nat'l Average*:	9.8 / 15 =	65.0%	School Nat'l Avg*:
Part IV: Christian Prayer (Prayer)	Group Average:	2.8 / 6 =	47.2%	Parish Nat'l Avg*:
	Nat'l Average*:	2.8 / 6 =	46.0%	School Nat'l Avg*:

\*The National Average for performance are for the year 2022 - 2023

Our group averages is higher than the national average.

# 8th Grade ACRE Level 2 (Group Average = Diocese of Santa Rosa)

## NCEA IFG: ACRE

PART I SCORE SUMMARY BY THE FOUR PILLARS OF THE CATECHISM OF THE CATHOLIC CHURCH

**School/Parish Name:** Diocese of Santa Rosa (35774)

**Diocese Name:** Diocese of Santa Rosa (35774)

**Level:** Level 2

**Assessment Year:** Academic Year 2022 - 2023

**Total Students:** 149

**Catholic Students:** 81

**Non-Catholic Students:** 29

**Returning Students:** 91

### All Students: 149

Pillar	Averages			
Part I: Profession of Faith (Creed)	Group Average:	19.6 / 24 =	81.5%	Parish Nat'l Avg*:
	Nat'l Average*:	15.1 / 24 =	63.0%	School Nat'l Avg*:
Part II: The Celebration of the Christian Mystery (Liturgy and Sacraments)	Group Average:	9.2 / 12 =	76.6%	Parish Nat'l Avg*:
	Nat'l Average*:	6.4 / 12 =	53.0%	School Nat'l Avg*:
Part III: Life in Christ (Morality)	Group Average:	16.9 / 21 =	80.4%	Parish Nat'l Avg*:
	Nat'l Average*:	13.9 / 21 =	66.0%	School Nat'l Avg*:
Part IV: Christian Prayer (Prayer)	Group Average:	4.5 / 6 =	75.4%	Parish Nat'l Avg*:
	Nat'l Average*:	3.7 / 6 =	62.0%	School Nat'l Avg*:

\*The National Average for performance are for the year 2022 - 2023

Our group averages is higher than the national average.

# Accreditation for the 2023-2024

Through the dedication of leaders and teachers, many of our schools successfully awarded six-year accreditations. The process demonstrates our commitment to maintaining high-quality education standards. These achievements are a testament to the collective efforts of our entire school community, and they provide a solid foundation upon which we can build an even more successful future.

We had six of the schools receive a six year accreditation, four with a full six year and two with a revisit at the mid-cycle.

We had one school have a revisit this year.



*Thank you!*



DEPARTMENT OF  
CATHOLIC SCHOOLS  
DIOCESE OF SANTA ROSA