

EZ School Apps

Parent Signup Instructions

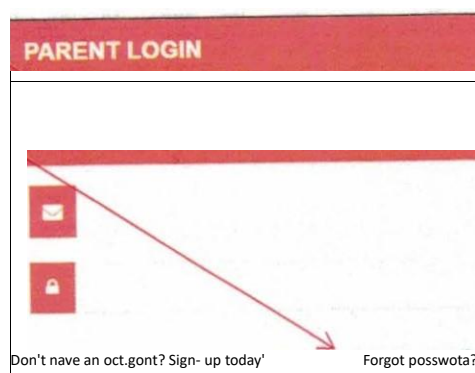
Please note: If you are a returning parent, you may log in with your previous email and password. If you have forgotten your password or want to change your password, follow the directions to "How to Reset your Password"

Returning Parents or School Uploaded Parents Instructions

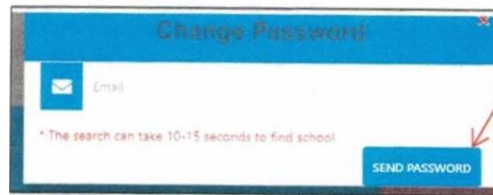
If you are a returning parent, you can log in with your email and password from last year. If you cannot remember your password, you can follow the steps below to reset your password. If your school uploaded your parent account and this is the first time logging in, you can follow the steps below to reset your password.

How to Reset Your Password

1. Please Start by going to www.ezschoollapps.com/login/parent
2. Click on Forgot Password



3. When prompted enter your email address and click Send Password



4. Lastly check your email for the link to set your password.
5. If you get this popup, click close and follow the New Parent Signup Instructions.

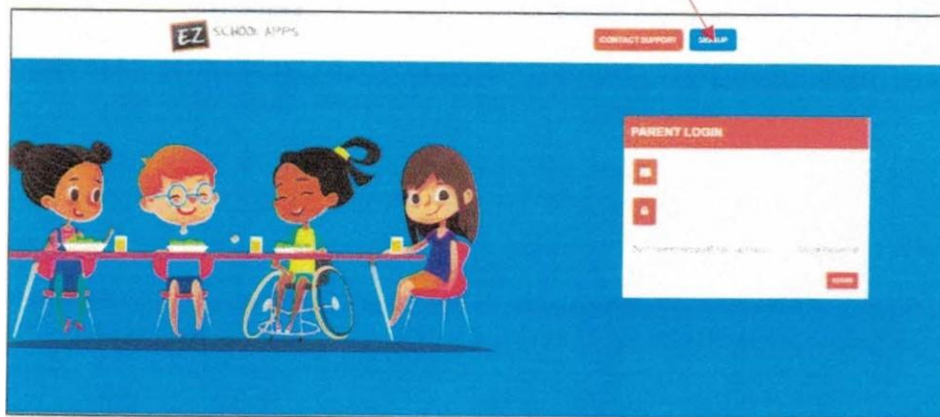
Warning

We couldn't find an account with this email address.
Please try again.

New Parent Signup

Below are the instructions for parents to create an account. If your parent account does not exist, you can then request access to one or multiple students.

1. Go to <https://www.ezschoollapps.com/login/parent> and click on SIGNUP.



2. Type in the school's zip code in the box and click Submit.

Enter the School's Zip Code

78228



SCHOOL Apps –

3. Use the dropdown to select your school. (If you have multiple students in the same district then just choose a single school and submit all of students for that location).
4. Enter your first and last name, phone number and your email address in the corresponding boxes.

Parent Sign Up Form

Parent First Name First Name

* Please fill out the first name field.

Parent Last Name Last Name

Parent Number

Email Address Email Address

Create Password Create Password

Confirm Password Confirm Password

Please put the student names you need a connection to

Please put the student names you need a connection to

1 If you have multiple students in the same school system then just choose a single school and submit the multiple names. The school that received the request will put the information in for the multiple schools.

5. Type a password in the Create Password box. Then type in your same password a second time in the Confirm Password box.
6. Enter the first and last name of each of your students in the final box.
7. Finally click Send Account Creation Request. Your registration is completed if you see this box:

Success

The parent information has been sent to the school. The school will contact you a day or two after the account has been created.

Please note: you will be contacted by Cafeteria Services, not St. Luke School.

You do not immediately have access to the system. Cafeteria Services must activate your account and link your student(s) to it. The time to complete this process can vary and it is entirely dependent on the number of students who registered before you. Cafeteria Services will send you an email upon completion.



CAFETERIA SERVICES

Private School Lunch Program
1430 Fresno Dr. San Antonio, Tx 78201

Tel (210) 348-7667

Fax (210) 348-7668

e-mail: cafeteriaservices@satx.rr.com

ACCOUNTS MUST BE PRE-PAID.

Cafeteria Services will no longer serve lunches on credit if the family does not have funds in their cafeteria account.

TO ACCESS YOUR LUNCH ACCOUNT, SIGN UP AT: WWW.EZSCHOOLAPPS.COWLOGIN/PARENT

(Meal prices includes milk, juice, or water)

PK TO 2nd GRADE	\$4.35 per meal		
3rd TO 5th GRADE	\$4.50 per meal	MILK/WATER/JUICE	0.95
6th TO 8th GRADE	\$4.95 per meal		
		2nd ENTRÉE (SECONDS)	\$1.90

GRADE	LUNCH & MILK, WATER OR JUICE			MILK/WATER	
	15 DAYS	1 MONTH	2 MONTHS	15 DAYS	1 MONTH
PK to 2 nd gr.	\$66.25	\$87.00	\$174.00	\$14.25	\$19.00
3 rd -5 th gr.	\$67.50	\$90.00	\$180.00	\$14.25	\$19.00
6 th -8 th gr.	\$74.25	\$99.00	\$198.00	\$14.25	\$19.00

RESPONSIBLE PERSON FOR PAYMENT:

Set up recurring payments with credit or debit card, please call us @ 210-348-7667.

PLEASE DO NOT SEND CAFETERIA PAYMENTS TO THE SCHOOL OFFICE.