

To Accomplish God's Work

# ST. PHILIP'S CHURCH

702 BELTRAMI AVE. NW, BEMIDJI, MN 56601  
218-444-4262 email: rector@stphilipsbemidji.org



December 20, 2020

## St. Philip's Church

218-444-4262  
www.stphilipsbemidji.org

### Parish Staff

**Pastor:**  
Fr. Jerry Rogers 441-4901

**Parochial Vicar:**  
Fr. Michael Arey 441-4902

**Deacon/Bookkeeper:**  
Deacon Kermit Erickson 441-4903

**Deacon/Parish Administrator:**  
Deacon Robb Naylor 441-4904

**Director of Stewardship & Development:**  
Maryhelen Chadwick 441-4906

**Director of Music & Liturgy:**  
Bonnie Lee 441-4905

**Director of Preschool & Elementary Faith Formation/Safe Environ. Coordinator:**  
Kris Jensen 441-4944

**Director of Youth Ministry/Middle & High School Faith Formation:**  
Maddie Pigg 441-4908

**Director of Campus Ministry & Adult Formation:**  
Nancy Goodman 441-4907

**Parish Office Coordinator:**  
Tammy Johnson 441-4900

**Facility Maintenance Supervisor:**  
Brad Arel

**Maintenance Support Staff:**  
Rick Dahlman  
Jim Shaw

### St. Philip's School Staff

218-444-4938

**Principal:**  
Jana Norgaard ext. 4941

**School Office Staff:**  
Stephanie Glen 441-4940  
Kerry Frauenholtz 441-4942

### Sister Parish

#### **St. Charles Pennington**

2500 Scenic Hwy NE, Pennington, MN  
Open Memorial Weekend to Labor Day Weekend

### Newman Catholic Ministries

BSU/NWTC

All sacramental events take place at  
St. Philip's Church. School year only.

### St. Philip's Clothing Depot

218-444-3835

Open 9:30 a.m. to 3:00 p.m. T, Th, Sat

**Manager:**  
Norma Himmelright

**Assistant Manager:**  
Shirly Curtis

### Spiritual Direction

Tamara Moore

Please call the Parish Office for information.

### Diocese of Crookston

**Victim Assistance Coordinator:**

Cindy Hulst, LSW • 218-281-7895



## Christmas Mass Schedule

### **Christmas Eve, December 24:**

4 p.m. <sup>LS</sup> (St. Philip's) **Full**  
6:30 p.m. (St. Philip's)  
7 p.m. (Sacred Heart, Wilton)  
10 p.m. (St. Philip's)

### **Christmas Day, December 25:**

10 a.m. <sup>LS</sup> (St. Philip's)  
10 a.m. (St. Mary's Mission,  
Red Lake)

### **Mary, Mother of God, January 1:**

9 a.m. (St. Philip's)  
9 a.m. (Sacred Heart, Wilton)  
10:45 a.m. (St. Mary's Mission,  
Red Lake)

<sup>LS</sup> Livestream at stphilipsbemidji.org.

**Seating is limited. To  
attend Mass in person at  
St. Philip's, register at  
stphilipsbemidji.org or  
call 218-444-4262.**

### **Your Parish Representatives:**

**Parish Council Members:** Ben Baird, Dave Brooks, Anita Froelich, Cynthia Haskin, Rich Marsolek, Elizabeth Mathews, Sophia Morin, Mary Scofield, Tracie Walter, George Whalen

**Finance Council Members:** Jeff Cwikla, Amy Haskell, Roger Heger

**School Council Members:** Will Beise, Erin Curran, Sarah Haman, Christine Louvar, Trudy Peterson, Scott Winter

**Trustees:** Kevin Erpelding, Tracie Walter

# Fourth Sunday of Advent

in the Year of St. Joseph

## December 20, 2020

O Lord, my Rock, my Savior!

### Mass Intentions

For Week of December 21 to 27

#### Monday, Dec 21

No Daily Mass

#### Tuesday, Dec 22

6:30 PM Mass: +Dennis Lindemann

#### Wednesday, Dec 23

8:40 AM Mass: +Richard Quintas

#### Thursday, Dec 24 Christmas Eve

4:00 PM Mass: +Julie Ringle

6:30 PM Mass: +Msgr. Mike Patnode

10:00 PM Mass: For the People

#### Friday, Dec 25 Christmas Day

10:00 AM Mass: +Fr. Don Braukmann

#### Saturday, Dec 26

5:30 PM Mass: Special Intentions for Tom & Julie Halberg & Family

#### Sunday, Dec 27

8:00 AM Mass: Special Intentions for Virginia Nihart

10:00 AM Mass: +Evelyn Schuiling

6:30 PM Mass: For the People

### Daily Readings

For Week of December 21 to 27

#### Monday, Dec 21

Sg 2:8-14

Ps 33:2-9,11-12,20-21

Lk 1:39-45

#### Tuesday, Dec 22

1 Sm 1:24-28

Ps 1 Sm 2:1,4-8

Lk 1:46-56

#### Wednesday, Dec 23

Mal 3:1-4,23-24

Ps 25:4-5,8-10,14

Lk 1:57-66

#### Thursday, Dec 24

Is 9:1-6

Ps 96:1-3,11-13

Ti 2:11-14

Lk 2:1-14

#### Friday, Dec 25

Is 9:1-6

Ps 96:1-3,11-13

Ti 2:11-14

Lk 2:1-14

#### Saturday, Dec 26

Acts 6:8-10,7:54-59

Ps 31:3-4,6,8,16-17

Mt 10:17-22

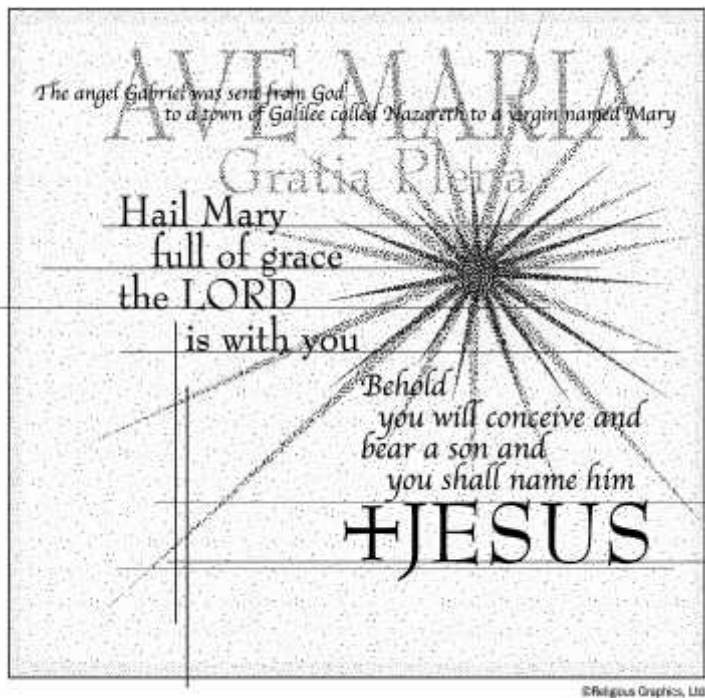
#### Sunday, Dec 27

Sir 3:2-6,12-14

Ps 128:1-5

Col 3:12-21

Lk 2:22-40



### This Week in the Parish

#### Monday, Dec 21

10:00 AM to 8:00 PM Adoration (Chapel)

7:00 PM AA Mtg (St. Kateri Rm)

#### Tuesday, Dec 22

#### Wednesday, Dec 23

9:30 AM Rosary (Chapel)

12:00 PM Parish Offices closed for rest of the day

#### Thursday, Dec 24

Parish Offices Closed

#### Friday, Dec 25 Merry Christmas!

#### Saturday, Dec 26

4:00 PM Reconciliation (Chapel)

#### Sunday, Dec 27

### Sacramental Life

#### Baptisms

Parents or prospective parents who wish to present a child for Baptism are asked to attend a baptism preparation class. The next class is scheduled for Sunday, January 10. Please call the Parish Office at 444-4262 for more information.

#### Marriages

Congratulations! Please contact the Parish Office as soon as possible (six months or more in advance) so that we can work with you to prepare for the Sacrament of Holy Matrimony.

#### Anointing of the Sick

If you are ill or will be having surgery and would like to receive the Sacrament of the Sick, please call the Parish Office to set up a time to meet with Fr. Jerry or Fr. Michael.



The St. Philip's Catholic Community welcomes through the waters of baptism, **Trigg Truman Erickson**, son of Cody & Blake Erickson. May he be filled with the Holy Spirit.



St. Philip's extends condolences to the families of **Ernest Huderle, Jean Wolf, Wesley Dalby, Jim LeClaire, Rodd Pickett**, father of Derek Pickett, **Dolores Wiggins**, mother of Gary Gregg, and **John Alexander**, father of Luke Alexander. May they find rest and peace, and may their families find comfort in God's love.

## Parish Life

### Year of St. Joseph – Patron of the Universal Church

With the Apostolic Letter "**Patris corde**" ("**With a Father's Heart**"), our Holy Father, Pope Francis has proclaimed a "Year of Saint Joseph" from December 8, 2020 to December 8, 2021.

At the conclusion of Pope Francis' letter, is a prayer to St. Joseph which he encourages all of us to pray together:

*Hail, Guardian of the Redeemer,  
Spouse of the Blessed Virgin Mary.  
To you God entrusted his only Son;  
in you Mary placed her trust;  
with you Christ became man.*

*Blessed Joseph, to us too,  
show yourself a father  
and guide us in the path of life.  
Obtain for us grace, mercy, and courage,  
and defend us from every evil. Amen.*



### Are you coming to a Christmas liturgy?

If you look at the last page of the bulletin, you will see the large number of voids on the Ministry Schedule for Christmas. If you plan on attending any of these liturgies in person and are a lay minister in any of the positions, please offer to help us out. It takes many hands to make these celebrations run smoothly, so please offer yours. If you can help out, contact Bonnie Lee, 441-4905 or on the parish ministry scheduler.

The Virgin is with child  
and shall bear a son, and  
she will call him  
**EMMANUEL**

©Religious Graphics, Ltd.

**Christmas Flowers** for St. Philip's Church are supplied, in part, through the generous donations given by parishioners in memory of deceased loved ones, or in honor of the living.

If you wish to make a memorial, please use your Christmas Flower offering envelope in your packet of envelopes. Or, place your donation in an envelope clearly marked **Christmas Flowers**. Please indicate the name of the deceased person(s) your gift is in memory of or the name of the living person(s) your gift is in honor of.

Place your envelope in the collection basket or turn it in to the Parish Office as soon as possible. All memorials will be published in the parish bulletin after the Christmas season.

## Stewardship of Financial Resources

### Total Actual Contributions

**Week #24** (Weekend of Dec 13) **\$11,438.00**

### Fiscal Year to Date

Last: \$456,343.63 ~ Current: \$383,687.85

### Faith in Our Future Campaign

Pledged to Date: \$2,727,962.70 ~ Paid to Date: \$2,008,242.90

**STEWARDSHIP ~ A HABIT OF THE HEART**

### Options for offertory giving:

- ◆ Deposit envelopes in boxes in the Narthex.
- ◆ Contact Deacon Kermit Erickson to set up recurring ACH withdrawals.
- ◆ Give online at [stphilipsbemidji.org](http://stphilipsbemidji.org).
- ◆ Give via text: Text "give" to 218-277-6444, follow link you receive, receive a link, click "sign in" to register for an account, complete registration to receive a secure PIN, select "offertory," enter the donation amount and payment.

### Our Gift to You

Are you busy buying gifts for everyone on your list? Don't forget yourself or your gift to God! The same gift will work, the book: **Do Something Beautiful for God**. Dynamic Catholic compiled daily quotes from Mother Teresa, based on her essential teachings, so you can take time out of each day in 2021 to reflect on these pearls of spiritual wisdom and listen to God. **Do Something Beautiful for God** is our gift to you & will be distributed after all Masses Christmas weekend. Please call 444-4262 if you are unable to attend & would like a copy.



### New Bible Study Opportunity

New Year's resolutions? Have you started thinking about how you will be better in 2021 than 2020? Consider this opportunity, which is FREE, GREAT, and very doable! Fr. Mike Schmitz of Duluth, through Ascension Press will offer **The Bible in a Year**, using **The Great Adventure Bible Timeline** by Jeff Cavins. There will be daily podcasts and short reading assignments for each day. Visit St. Philip's website for a registration link or to find the reading plan and more information. If you've never participated in a bible study before, this is a good one to start with. Even if you have participated in bible study before, this is an excellent daily habit builder that will bring growth.



## St. Philip's Clothing Depot

The Clothing Depot will be closed for the Christmas holiday from December 21 through January 4.

We are happy to be able to serve the people of Bemidji once again. Many thanks to our loyal patrons and to the many volunteers that make the Clothing Depot happen!



These last months have been incredibly difficult on all of us and marriages have suffered! Please let us help you to find enrichment, joy, and hope in your relationship! Register for the January 9-10 Marriage Encounter. Weekends are held at Mt. Olivet Conference and Retreat Center in Farmington. Visit [www.marriages.org](http://www.marriages.org) for additional information or call 651.454.3238.

## Grieving Resource Library

If you have lost a loved one, maybe you have felt one of the following during your grief: *"It can't be, it just can't be; I never knew that it would hurt so much; part of my heart has been ripped away; no one ever told me that grief felt so much like fear; no one knows the tears still inside me; and finally, death leaves a heartache no one can heal, love leaves a memory no one can steal."*

Where do I find help? At St. Philip's. We have started to develop a Grieving Resource Library. We currently have 30-some books and pamphlets that could help you through your grief of the loss of a loved one.

Some of the books we carry are:

- **Too Soon A Memory**, a guide for parents suffering a miscarriage. This booklet focuses on the needs of parents who have to deal with a loss that involved tangible memories.
- **Journey Through Grief**, a series of four books: Book one, *A Time to Grieve*, the three N's, normal, natural, necessary. Book two, *Experiencing Grief*, when your loss sinks in, accepting your grief, secondary losses. Book three, *Finding Hope and Healing*, how much longer God? How long does this last? Book Four, *Rebuilding and Remembering*, permission to grieve – again, the first anniversary, rebuilding your life, continuing bonds.
- **Getting Past Christmas**, tips for surviving December after the death of a loved one.
- **When Bad Things Happen to Good People**, how to cope with hard times and personal pain after the loss of a loved one.
- **The Gift of a Memory**, a warm and gentle gift of love that commemorates the loss of a special life and celebrates our most cherished memories.

The books/pamphlets are located in the St. Kateri Room and can be checked out for 2 weeks or more if you need to. If you are not sure which book could assist you, contact either Fr. Jerry, Fr. Michael, Deacon Kermit or Deacon Robb. *"The journey of grieving takes you from loving in the presence to loving in the absence."*

## Trouble hearing during Mass?

There is a "t loop" in St. Philip's Church that assist users of hearing aids. Users should turn their hearing aid to the setting marked **T**.



## Are You Up-to-date?

Much of the information sent to parishioners is via email. If you are not getting emails from us the chances are good that either 1) we do not have an email address for you or 2) the email address we have is incorrect. Please call the Parish Office, 444-4262 or email [tjohnson@stphilipsbemidji.org](mailto:tjohnson@stphilipsbemidji.org) with your information. The same goes for any address or phone changes. We appreciate your assistance in keeping our records current!

## Adult Faith Formation Online Opportunities:

The following two opportunities utilize online video, talk outlines, a resource list, and reflective activities. You can go through these series at your own pace or start a discussion group to go through these series with others. (If you'd like to see if there are others interested in forming a group study, leave your name, contact info & desired series with Nancy at 218-441-4907 or [ngoodman1@stphilipsbemidji.org](mailto:ngoodman1@stphilipsbemidji.org).)

**"Healing & Hope"** taught by a variety of speakers. For more information please go to - <https://www.archspm.org/healing-and-hope-series/>

**"Praying with Scripture Series"** taught by Bishop Cozzens & Archbishop Hebda. For more information please go to - <https://www.archspm.org/praying-with-scripture-series/>

## Attend Mass at St. Philip's via Livestream

Just a reminder that we welcome all to attend Mass every weekend via livestream. Each week we livestream 5:30 PM Mass on Saturday. The Mass recording is available all week (until the next Saturday Mass). You can watch the live (and recorded) video at [stphilipsbemidji.org](http://stphilipsbemidji.org), and we post a link to our Facebook page (@stphilipsbj). Please contact Maryhelen Chadwick if you have problems accessing Mass or if you would like to help provide this valuable ministry. Contact her at 444-4262 or [mhchadwick@stphilipsbemidji.org](mailto:mhchadwick@stphilipsbemidji.org). For Christmas, we plan to livestream 4:00 PM Mass on Christmas Eve and 10 AM Mass Christmas morning.

## St. Philip's School Happenings —

St. Philip's School would like to thank the Mary Lou Mathiowetz Charitable Fund for a \$5000.00 grant to be used for salary enhancement for our St. Philip's teachers. We are grateful for this generous gift to our staff!

Our school Dance-a-thon made over \$20,000! Thank you to everyone who contributed to this very important fundraiser for our school!

Christmas vacation starts Monday, December 21<sup>st</sup> and school resumes on Monday, January 4<sup>th</sup>. We wish everyone a very Merry Christmas!

### Upcoming Dates:

**Monday, Dec. 21-Sunday, Jan. 3:** Christmas Vacation  
**Monday, Jan. 18:** No School-Martin Luther King, Jr. Day  
**Friday, Jan. 22:** 2<sup>nd</sup> Quarter Ends  
**Thursday, Feb. 4:** St. Philip's School Information Night  
**Friday, Feb. 19:** 3rd Quarter Midterms

*"Hail, full of grace, the Lord is with you!" — Luke 1:28*

After Jesus, we look to Mary as an ideal steward. Her entire life was lived in obedience to God's call. Mary teaches us to live with joy for all we have been given. Just as the moon reflects the light of the sun, Mary reflects the light of Christ. Like Mary, we are called to reflect Christ's light to the world through our gratitude and generosity.



America will never resist abortion until America sees abortion... The pro-life movement is not primarily a response to *Roe v. Wade*. It is a response to Jesus Christ. ~ Father Frank Pavone, National Director, Priests for Life



	<b>Christmas Eve Mass</b> Thursday, Dec 24 4:00 PM	<b>Christmas Eve Mass</b> Thursday, Dec 24 6:30 PM	<b>Christmas Eve Mass</b> Thursday, Dec 24 10:00 PM	<b>Christmas Day Mass</b> Friday, Dec 25 10:00 AM
<b>SACRISTAN</b>	Deborah Millard	HELP PLEASE	Tracie Walter	HELP PLEASE
<b>LECTOR 1</b>	Ernie Rall	Bonnie Lee	David Liedl	HELP PLEASE
<b>LECTOR 2</b>	Karen Merschman	HELP PLEASE	HELP PLEASE	HELP PLEASE
<b>INTERCESSOR</b>	Deacon Kermit Erickson	HELP PLEASE	HELP PLEASE	HELP PLEASE
<b>CAPTAIN EMHC</b>	Kelly Marcum	Nancy Goodman	Mark Studer	HELP PLEASE
<b>EMHC</b>	Elizabeth Mathews Deborah Millard HELP PLEASE	HELP PLEASE HELP PLEASE HELP PLEASE	David Liedl HELP PLEASE	Don Carlson Betty Lindy
<b>USHER - Main Church</b>	Bonnie Lee Dick Lehmann John Marcum Dick Robinson	HELP PLEASE HELP PLEASE HELP PLEASE HELP PLEASE	HELP PLEASE HELP PLEASE HELP PLEASE HELP PLEASE	HELP PLEASE HELP PLEASE HELP PLEASE HELP PLEASE
<b>GREETER - Entrance Door</b>	HELP PLEASE HELP PLEASE HELP PLEASE HELP PLEASE	Nancy Goodman HELP PLEASE HELP PLEASE HELP PLEASE	HELP PLEASE HELP PLEASE	HELP PLEASE HELP PLEASE

## Ministry Schedule

Week of December 26/27 ~ Feast of the Holy Family in the Year of St. Joseph

	<b>Saturday, Dec 26 5:30 PM</b>	<b>Sunday, Dec 27 8:00 AM</b>	<b>Sunday, Dec 27 10:00 AM</b>
<b>SACRISTAN</b>	Betty Lindy	Dan Shea	Tracie Walter
<b>LECTOR 1</b>	Roger Heger	Kevin Erpelding	Gretchen Buxton
<b>LECTOR 2</b>	Aaron Heger	Kay Mack	Laura Hansen
<b>INTERCESSOR</b>	Deacon Robb	Deacon Kermit Erickson	Deacon Kermit Erickson
<b>CAPTAIN EMHC</b>	Deborah Millard	Stephanie Downey	Joe Bofferding
<b>EMHC</b>	Roslyn Hanson Heidi Hiscock	Mike Hougen Sue Lucas Mary Scofield	Don Carlson Courtney Haskins Nicole Kieson
<b>USHER - Main Church</b>	Dave Hiscock Dick Lehmann Dick Robinson	David Brooks Larry Mack Bob Murray	Dave Cwikla John Miesen Bob Pohl
<b>GREETER - Entrance Door</b>	Marsha Stebe Darlene Weber	Lloyd Holy Todd Scofield	Myrna Cwikla Mary Kinsella

 <p><b>Olson-Schwartz</b> FUNERAL HOME &amp; CREMATION SERVICE Kirk &amp; Michelle Malkowski, Owners 3330 Irvine Ave NW 751-3159 www.olsonschwartzfuneralhome.com</p>		<p><b>PLACE YOUR AD HERE!</b> Contact Deacon Kermit at (218) 444-4262</p>	<p><b>St. Philip's Clothing Depot</b> Corner of 8th St. &amp; Beltrami Ave. • Bemidji <b>NOW OPEN</b> 9:30 am-3:00 pm Days May Vary Clothing &amp; Household Items Free Section Available Donations accepted during open hours. Proceeds from sales are donated to local charities.</p>
<p><b>FIRST NATIONAL BANK BEMIDJI</b> www.fnbbemidji.com</p>	<p><b>BEMIDJI CHRYSLER CENTER</b> 755 Paul Buryan Dr. • Bemidji 751-8006 • 1-877-755-5337</p>	<p><b>KNIGHTS OF COLUMBUS</b> Bemidji Council 1544 Randy Lipsky Grand Knight 760-7024 Joe Bofferding, E. S. 556-0651</p>	<p><b>Sara Labraaten</b> State Farm</p>
<p><b>FRONTIER ELECTRIC</b> OF BEMIDJI, INC. RESIDENTIAL - COMMERCIAL Licensed - Bonded - Insured Jeff Frenzel, Owner 218-766-7788</p>	<p><b>PLEASE REMEMBER</b> to include St. Philip's in your will or estate plan. Wonder how? To find out more, call 444-4262.</p>	<p><b>DR. MIKE HEADLEE</b> 1426 Bemidji Ave. N., Suite 2 333-8811 <b>Explore CHIROPRACTIC</b> WELLNESS CENTER explorechiropractic.com</p>	

 <b>SECURITY BANK USA</b> Here for good. <a href="http://www.SecurityBankUSA.com">www.SecurityBankUSA.com</a>		 <b>PLUMBING HEATING</b> 3403 Bemidji Ave. N Bemidji, MN 56601 Master Plumber #2830m9 (218) 751-9710 Fax: (218) 751-0073	<b>KING OF THE ROAD TRAILERS</b> FOR SALE OR RENT <b>218-888-6181</b> <i>Big Tex — Mission — EZHAULER</i> Just west of LePier's <a href="http://www.kingoftheroadtrailer.com">www.kingoftheroadtrailer.com</a>
	 <b>Bemidji FAMILY DENTISTRY</b> Ashley Metcalf, DDS 218.303.8802 (h) 218.303.1352 (fax) 1900 Dawson Dr W   Unit #2 Bemidji, MN 56601 <a href="mailto:info@bemidjifamilydentistry.com">info@bemidjifamilydentistry.com</a>	 <b>Arrow Printing Inc.</b> For all your printing needs! <b>751-1564 751-4441</b> 	<b>BONDED LOCK &amp; KEY</b> Keys, Hardware, Safes Repairs, Lockouts Chip Keys & Remotes Residential Commercial 2919 BEMIDJI AVE N BEMIDJI, MN 56601 218.751.8084 <a href="http://www.bondedlock.com">www.bondedlock.com</a> 2919 Bemidji Ave N 
	 <b>MURRAY SURVEYING, INC.</b> LICENSED LAND SURVEYORS <b>218-751-5898</b>	 <b>THRIVENT FINANCIAL</b> Sandra J McLean RICP® Financial Associate Ashley Stevens Financial Associate <b>218-444-6679</b> 27193 RS-19	 <b>ACE</b> The helpful place. <b>751-1506 • Bemidji, MN</b>
<b>SPARKY'S CONSTRUCTION INC.</b> Excavating Contractor <b>444-8181</b>	Serving Your Family For Generations  <b>CEASE FAMILY FUNERAL HOMES</b> 2802 Irvine Ave   Bemidji   751-9706 Blackduck   Bigley   Cass Lake   Nove   Park Rapids	 <b>TODAY'S ELECTRIC</b> LICENSED - BONDED - INSURED ELECTRICAL CONTRACTING, NETWORKING & TELECOMMUNICATIONS • 218-751-1899 10330 IRVINE AVE. NW TONY TODAY'S PRESIDENT/OWNER	<a href="http://www.dondelingerbemidji.com">www.dondelingerbemidji.com</a> <b>Dondelinger</b> Bemidji, MN <b>(218) 751-1220</b> 
 <b>Ken K. Thompson Jewelry</b> 1080 Paul Bunyan Dr. NW Bemidji, MN 751-1433 Diamond Specialists Since 1935	 <b>MJ STUDIOS, INC.</b> ARCHITECTURAL Michael Johnston (218) 751-0109 <a href="http://www.mj-arch.com">www.mj-arch.com</a>	 <b>MARKETplace FOOD &amp; DRUG</b> Hours: 6 AM to 10 PM • 444-1400 2000 Paul Bunyan Drive NW	 <b>Raphael's Bakery CAFE</b> "The Finest in Cakes, Pastries & Breads" 319 Minnesota Avenue Bemidji, Minnesota 56601 (218) 759-2015
 <b>clarity glass</b> RESIDENTIAL • COMMERCIAL Glass Replacement • Tinting • Custom Mirrors • Automatic Window Shades • Storm Windows & Screens • Window Film • Emergency Board-Up <b>444-GLASS</b> 		 <b>GLEN PROPERTY IMPROVEMENT BEMIDJI, MN</b> STUMPS TREES TOTAL LOT CLEARING DRIVEWAYS BUILDING PADS LEVELING LIGHT DEMOLITION TRAIL CONSTRUCTION DETCHING EROSION REPAIR FLOOD PLOTS MUCH MORE <b>218-368-8676</b> LIKE US ON FACEBOOK FOR MORE INFORMATION	 <b>SLIM'S BAR &amp; GRILL</b> A great place for a great burger! 142 Anne St NW Bemidji, MN 56601 Lisa Freise-Manager <b>218-444-SLIM</b>
<b>KNIFE RIVER MATERIALS</b> AN MDR RESOURCES COMPANY For ALL Your Concrete Building Needs Open to Contractors & the "Do It Yourself" Public! 860 751-6241		<b>CENTURY 21</b> Dickinson Realtors For Quality Service Call <b>218-751-1228</b> or 1-800-766-1228 <a href="http://www.century21dickinson.com">www.century21dickinson.com</a> Email us at c21dknsn@paulbunyan.net 1085 Paul Bunyan Dr NW, Bemidji, MN 56601	
<b>FRENZEL OVERHEAD DOOR</b> GARAGE DOORS & OPENERS <b>218.766.2669</b> RESIDENTIAL • COMMERCIAL • SALES • SERVICE • INSTALLATION	 <b>HIGGINS Heating</b> Charlie Ward 751-2801 Higgins Heating, Air Conditioning & Refrigeration, Inc. 1632 Bemidji Ave. N Bemidji, Minnesota 56601		 <b>Paul Bunyan COMMUNICATIONS</b> TV   INTERNET   PHONE <b>444.1234 PAULBUNYAN.NET</b>
 <b>HONDA OF BEMIDJI</b> <b>218-444-HONDA 877-82-HONDA</b> Located in the west half of Bemidji Chrysler	 <b>pepsi</b>	<b>Tony's Body Shop, Inc.</b> Complete Collision Repair Tony Nistler 586.2825 (shop) 766.4210 (cell) 11041 Birchmont Beach Road NE	<b>PLACE YOUR AD HERE!</b> Contact Deacon Kermit at (218) 444-4262
<b>\$1.00 OFF Touchless Wash</b> <b>KENNY'S</b> Your Full Service Station 429 Bemidji Ave. 751-3426 Alan & Karen Merschman Expires 1/31/21	<a href="http://www.bemidjisportcentre.com">www.bemidjisportcentre.com</a> <b>GET SERIOUS ABOUT FUN! BEMIDJI</b>  <b>SPORTS CENTRE</b> 1826 Anne Street NW • Bemidji <b>218-751-4477</b>	<b>CUSTOM SPRINKLERS</b> UNDERGROUND SPRINKLER SYSTEMS Jason Urman 218.209.5467 Jeremy Urman 218.209.1187 RESIDENTIAL COMMERCIAL 1826 Anne Street NW • Bemidji 218-751-4477	<b>Please pray for vocations!</b> Pray for our <b>Seminarians</b> and our <b>Deacon Candidates!</b> Please include in your prayers all who may be discerning a vocation!

Please Patronize These Advertisers... Their Sponsorship Makes Our Bulletin Possible.