

MOST PRECIOUS BLOOD & SAINT THERESA OF LISIEUX PARISHES

SEPTEMBER 21, 2025



25th Sunday

IN ORDINARY TIME

"If, therefore, you are not trustworthy with dishonest wealth, who will trust you with true wealth?" - Lk 16:11

Excerpts from the Lectionary for Mass ©2001, 1998, 1970 CCD.

CLPI

Welcome!

We extend a warm welcome to all who are visiting or are here for the first time! If you attend Mass at Most Precious

Blood or St. Theresa's regularly, please consider registering as a parishioner and signing up to receive our emails. You may register through our website, or fill out a card at the back of either church and drop it in the basket.

PASTOR

Fr. Bill Robinson

MASS TIMES

SATURDAY VIGIL

4:00 pm at St. Theresa

5:30 pm at Most Precious Blood

SUNDAY

8:45 am at Most Precious Blood

10:45 am at St. Theresa

DAILY MASS

Tuesday/Thursday 9:00 am at St. Theresa

Wednesday/Friday 9:00 am at Most Precious Blood

SACRAMENTS AND DEVOTIONS

CONFESSION

Saturday 3:15-3:45 pm at St. Theresa

CONFESSION & ADORATION

First Thursdays 9:30-10:00 am at St. Theresa

First Fridays 9:30-10:00 am at Most Precious Blood

WEEKLY ROSARY

Thursdays 8:30 am

before 9:00 am Mass at St. Theresa

BAPTISM/FUNERAL/ANointing

Contact Roseann@mpb-stp.org

MARRIAGE

Contact the Parish at least 6 months prior

COMMUNION FOR HOMEBOUND

If you or someone you know is homebound and would like to receive the Eucharist, please contact the parish office,

CircleofFriends@mpb-stp.org or

Kathy Donohue at
(508) 934-9366.

MOST PRECIOUS BLOOD PARISH

30 Centre Street

P.O. Box 812

Dover MA 02030

(508) 785-0305

OFFICE HOURS: WEDNESDAY & FRIDAY 8:30AM—3PM



Online: www.mpb-stp.org



[DoverSherbornCatholic](https://www.facebook.com/DoverSherbornCatholic)

SAINT THERESA OF LISIEUX PARISH

35 S. Main Street

P.O. Box 176

Sherborn MA 01770

(508) 653-6253

OFFICE HOURS: TUESDAY & THURSDAY 8:30AM—3PM

MOST PRECIOUS BLOOD & ST. THERESA OF LISIEUX PARISHES

MASS INTENTIONS

Most Precious Blood September 20 - September 28

Sunday 9:00am Pat Boyle (special intention)
 Wednesday 9:00am Gene Schrandt
 Friday 9:00am David Morton
 Saturday 5:30pm Lori and Joseph Garvey
 Sunday 8:45am Shawn Monaghue

Saint Theresa of Lisieux September 20 - September 28

Saturday 4:00pm For the people of the Parish
 Sunday 10:30am Douglas Furbush, Jr.
 Tuesday 9:00am Patrick Cooney
 Thursday 9:00am
 Saturday 4:00pm
 Sunday 10:45am Donna Manion



PRAYER GROUPS

The Women's Prayer Group

meets Wednesdays at 7 pm to share our faith and spirituality with each other. We study the upcoming Sunday Gospel using the Lectio Divina method of prayer. We end each meeting praying for special intentions and for those who have asked for our prayers. At this time we are meeting by Zoom. New members are always welcome.

Contact Kathy Donohue at (508) 934-9366 or Liz Ham at lizbeham@gmail.com.

The Men's Prayer Group

meets Saturday mornings at 8 am in the parish hall at St. Theresa's to read and discuss scripture, ending with prayer around 9 am. We also retain a Zoom link for those who wish to participate remotely.

Contact Gene Ham at hamgene50@gmail.com.



NS, Tom M, Marie K, Lisa B, Michael, Ellie, Sarah, Bob Keller, Lisa H, Noreen D, Brooke, Meghan and Christopher, Jane, Susan, Larry, Bill, John, Kevin, Katie, and Rosemary

If you would like to add someone to the prayer request list or if you would like to be a part of the prayer line, contact Roseann Furbush at Roseann@mpb-stp.org.



SECOND COLLECTION THIS WEEKEND FOR THE CLERGY TRUST

This week's second collection supports the retirement, medical and financial needs of priests in good standing throughout the Archdiocese of Boston. These priests have given their lives to faithfully serve Christ, the Church, and you. Please be generous to this important collection.

For more information, please visit www.clergytrust.org.

THE CIRCLE OF FRIENDS

The Circle of Friends is our Collaborative's women's group. Our mission is to provide a gesture of kindness to those individuals and families who are weathering an illness, have suffered a loss and/or are celebrating a birth. We also host fun social events. If you would like more information or are interested in joining, email

CircleofFriends@mpb-stp.org.



WEEKLY SCRIPTURE FOR THE WEEK OF SEPTEMBER 21

Sunday: Am 8:4-7/Ps 113:1-2, 4-6, 7-8 (see 1a, 7b)/1 Tm 2:1-8/Lk 16:1-13 or 16:10-13
 Monday: Ezr 1:1-6/Ps 126:1b-2ab, 2cd-3, 4-5, 6/Lk 8:16-18
 Tuesday: Ezr 6:7-8, 12b, 14-20/Ps 122:1-2, 3-4ab, 4cd-5/Lk 8:19-21
 Wednesday: Ezr 9:5-9/Tb 13:2, 3-4a, 4befghn, 7-8/Lk 9:1-6
 Thursday: Hg 1:1-8/Ps 149:1b-2, 3-4, 5-6a and 9b/Lk 9:7-9
 Friday: Hg 2:1-9/Ps 43:1, 2, 3, 4/Lk 9:18-22
 Saturday: Zec 2:5-9, 14-15a/Jer 31:10, 11-12ab, 13/Lk 9:43b-45

FROM THE PASTOR

**Reflection:**

Today's prophet, Amos, was a sheep breeder from the Northern Kingdom of Israel in the 8th century BC. Called by God, he stood courageously against hypocrisy and dishonesty, speaking truth even to kings, priests, and other leaders who had strayed from God's commands. His words remain among the strongest in all of Scripture. Amos reminds us that, as Christians, we are called to live with sincerity, integrity, and kindness. This is not always easy—it requires vigilance to avoid the subtle trap of hypocrisy. Yet the effort is worth it, for these virtues not only draw others to Christ but also deepen the bonds of friendship and trust among us.

Parish News:

A heartfelt thank-you to everyone who helped with our booth at Dover Day! Your time, energy, and enthusiasm made it a great success and a wonderful opportunity to share the life of our community with others.

-Fr. Bill

SUNDAY COFFEES NEED YOUR HELP

Our Sunday coffees are a great time to connect with fellow parishioners. Help us keep them going by volunteering to pick up the coffee and donuts on your way to Mass.

The coffee and donuts are PREORDERED AND PREPAID, so all you need to do is pick them up and bring them to the Parish Hall.

Sign up boards are located in the back of both churches as well as in the Parish Hall or you can contact:

MPB: Jim Hennessey at jhennes@bidmc.harvard.edu

STP: Martha Chouinard at ticamar58@aol.com

FOOD PANTRY DONATIONS**Boston Healthcare for the Homeless**

Thank you to all who so generously donate to the Family Team Clinic's food pantry at Boston Health Care for the Homeless. The clinic serves a clientele across a broad ethnic spectrum mostly families with young children. The items that "move off the shelf" are those most familiar to them, which include: peanut butter, jelly, crackers, boxed milk, cereal, dry beans, packs of rice, oatmeal, juice packs, coffee, teabags, canned refried beans, ramen noodles, mac & cheese, pasta, sauces, pancake mix, syrup, snacks, canned tuna or canned chicken. For the next few months, there is little need for infant formula and baby foods. Less likely to be taken are canned beans, chili, and soups. As always, gift cards to a supermarket are always appreciated. Food pantry donation bins are in the back of both churches. **Our next delivery is October 14.** Donation areas are in the back of both churches.

Contact Carol Coakley at cacoakley@gmail.com or Dianne Polizzi at dij05@verizon.net.

Local Food Pantry (A Place to Turn and St. Bridget's) collection bins are located in the back of St. Theresa. Contact Joe Meaney at (508) 298-8655 with any questions.

Your continued generosity is greatly appreciated!

ARE YOU RECEIVING OUR EMAILS?

We send important updates and invitations via email. Don't miss out! To subscribe to our emails, visit our website, mpb-stp.org/About/E-mail sign up or use this QR Code.



If you think you are already subscribed but are not receiving our emails, double check your spam and promotion folders.



COLLABORATIVE WELCOME BACK BBQ
Saturday, September 20
Following the 4 pm Mass at St. Theresa



COLLABORATIVE WELCOME BACK PANCAKE BREAKFAST
Sunday, September 28
Following the 8:45 am Mass at Most Precious Blood



BLESSING OF THE ANIMALS
Sunday, October 5
at Most Precious Blood

ST. THERESA 100TH ANNIVERSARY CELEBRATION/FALL SOCIAL
Friday, October 17
Sherborn 1858 Townhouse



FAITH FORMATION



FAITH FORMATION REGISTRATION REMINDER

Parents,

Don't forget to register your child for Faith Formation! Classes begin October 5. Schedules, tuition, and an online registration form may be found at <https://www.mpb-stp.org/faith-formation>.

For information on grades 1-5, contact Graceanne Bowe at Graceanne@mpb-stp.org

For information on grades 6-10, contact Zach Morris at Zach@mpb-stp.org



FAITH FORMATION TEACHERS NEEDED

Could God be calling you to pass on the Catholic faith to the children and youth of our parish?

The Faith Formation program is in need of catechists for all grades. Substitute catechists, classroom volunteers and hall monitors are also needed.

If you have a gift to share, please contact:

Graceanne@mpb-stp.org for grades 1-6 or

Zach@mpb-stp.org for grades 7-10.



MASS FOR HOMESCHOOLERS

Archbishop Richard Henning invites homeschooling families to the Pastoral Center in Braintree for Mass and refreshments on

Monday, September 29th from 11 AM – 1:00 PM. The archbishop will begin with Mass in the Bethany Chapel followed by a time of fellowship. Please RSVP at bit.ly/homeschoolersmass.

YOUTH MINISTRY

UPCOMING MEETINGS

High School: This Sunday, September 21, 6:30 pm at STP

Middle School: This Wednesday, September 24, 6:30 pm at STP

A CATHOLIC MINISTRY FOR SINGLE MOMS

Are you looking for fellowship with other single mothers? We're excited to launch Momentum gatherings in Boston! Children are welcome.

Gathering Details: Third Saturday of each month: September 20, October 18, November 15 and December 20 Time: 1-3 pm.

Location: Lazarus Center for Healing Shrine Address: 47 Butler Ave, Wakefield, MA Email:

momentumcatholicssinglemothers@gmail.com phone: 617-798-5795

FAITH PROGRAMS FOR ADULTS



BIBLE AND BAGELS

Our Friday morning Bible study group continues to meet on the 2nd, 3rd, & 4th Fridays following the 9 am Mass at Most Precious Blood Church. Refreshments and Bibles are provided.

Come & bring a friend!

Contact Fr. Bill at wrobinson19@bostonclergy.org.



MASSACHUSETTS
CITIZENS FOR LIFE
maproflife.org

ANNUAL BANQUET

Friday, September 26

6pm Reception, 7pm Dinner

Newton Marriott

Keynote Speaker: Kayleigh McEnany,
Former White House Press Secretary

MAProLife.org/Banquet

PROJECT RACHEL POST-ABORTION HEALING RETREATS

Are you – or someone you know – seeking peace after an abortion? The Project Rachel ministry of the Archdiocese of Boston extends a special invitation to women experiencing regret from a past abortion to attend a Come to the Waters of Healing one-day retreat. Fall dates are Saturday, September 27 and Saturday, October 18. Locations are confidential.

For more information on the retreats or other services, contact Project Rachel at (508) 651-3100 or help@projectrachelboston.com.

WORCESTER CATHOLIC WOMEN'S CONFERENCE

St Joseph's School, Webster, MA

September 27, 2025

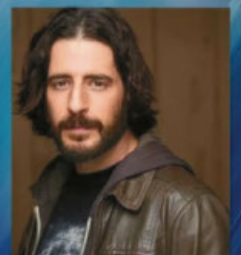
REGISTER NOW!

Visit our website: wewconference.com

OR CALL: Corinn Dahm

508-277-3969

**HOPE
FOR LIFE
Conference**
October 4, 2025
The Track at New Balance
91 Guest St. Boston, MA 02135



Jonathan Roumie

COLLABORATIVE CALENDAR

Saturday, September 20 - 2nd Collection for The Clergy Trust

8:00 am Men's Prayer Group at St. Theresa
3:15-3:45 pm Confessions at St. Theresa
4:00 pm Mass at St. Theresa
No 5:30 pm Mass at Most Precious Blood



Collaborative Welcome Back BBQ at STP

No 5:30 pm Mass at Most Precious Blood

Join us at St. Theresa for the Welcome Back BBQ!

Sunday, September 21—2nd Collection for The Clergy Trust

8:45 am Mass at Most Precious Blood followed by
coffee & donuts in the Parish Hall
10:45 am Mass at St. Theresa followed by
coffee & donuts in the Parish Hall
6:30 pm High School Youth Ministry at STP

Tuesday, September 23

9:00 am Mass at St. Theresa

Wednesday, September 24

9:00 am Mass at Most Precious Blood
6:30 pm Middle School Youth Group at STP
7:00 pm Women's Prayer Group

Thursday, September 25

8:30 am Weekly Rosary
9:00 am Mass at St. Theresa

Friday, September 26

9:00 am Mass at Most Precious Blood
9:45 am Bible & Bagels at MPB

Saturday, September 27

8:00 am Men's Prayer Group at St. Theresa
3:15-3:45 pm Confessions at St. Theresa
4:00 pm Mass at St. Theresa
5:30 pm Mass at Most Precious Blood

Sunday, September 28

8:45 am Mass at Most Precious Blood followed by

Welcome Back Pancake Breakfast

10:45 am Mass at St. Theresa followed by
coffee & donuts in the Parish Hall

SCENES FROM DOVER DAYS

God blessed us with fabulous weather last Saturday and we had a great time at this year's Dover Days! We even had a chance for photos with a special guest. Thank you to all who helped out and stopped by our booth.



THE CHOIRS AT BOTH PARISHES ARE SEEKING NEW MEMBERS

We welcome new members of high school age and older. No experience is necessary, and singers of all abilities are encouraged to share their voices in worship.

At Most Precious Blood, the choir rehearses on Sundays from 8:00 - 8:45 am before Sunday Mass.

At St. Theresa Parish, the choir rehearses on Sundays from 10:00-10:45 am before Sunday Mass.

If you are interested in joining the choir, please email our
Director of Music, Anne Miller, at

Annemiller@mpb-stp.org or come by the organ after Mass.





GEORGE F. DOHERTY & SONS FUNERAL HOMES

Since 1895

www.gfdoherty.com

477 Washington St.
WELLESLEY
781-235-4100

1305 Highland Ave.
NEEDHAM
781-444-0687



456 High St.
DEDHAM
781-326-0500

P.E. Murray-F.J. Higgins
Funeral Home
2000 Centre St., W. ROXBURY
617-325-2000



SPRING IS RIGHT AROUND THE CORNER

**NOW ACCEPTING NEW CUSTOMERS,
CALL TODAY!**

COMMERCIAL • RESIDENTIAL
FRANKLIN, MA

Landscape Design
Patio Walkways, Fire Pits & Walls
Spring/Fall Clean Up Mowing • Mulching
Aeration • Stump Grinding • Slice Seeding

508.528.6505 • www.KELLYSLANDSCAPINGinc.COM

DOVER PUMP
and
EQUIPMENT INC.

SINCE 1948

Complete Water System Sales and Service

Well drilling • hydrofracking
filtration & conditioning • pumps
tanks • certified water testing

508-785-0463
Mass License #718
www.doverpump.com

Proudly owned & operated
by the A. Franchi Family
"Celebrating
Over 50 Years"



THE ELLIS

REHABILITATION
& NURSING CENTER

(781) 762-6880
www.TheEllis.com
135 Ellis Avenue, Norwood, MA 02062

IF YOU LIVE ALONE

MDMedAlert!™ As Low As

\$19⁹⁵ /mo.

- ✓ Ambulance/Police
- ✓ Family/Friends
- ✓ GPS & Fall Alert

CALL NOW! 800.808.9294

md-medalert.com



CH **JONASSON**
CORPORATION

PLUMBING, HEATING & AIR CONDITIONING

781-444-0121

Carl Jonasson, Parishioner

Email: chjoncorp@verizon.net

**Caprarella
Painting**

Providing Fine Interior
& Exterior Services

Robert Caprarella
Master Painter

508-269-9598
caprarellapainting.com
Fully Insured



John Everett & Sons Funeral Home

*He Came To Natick in 1854
And A Tradition Was Born*



*Founder,
John Everett*

Coming from Kilmacow, County Kilkenny, John Everett was the type of strong character that Ireland sent to this country in the 1840's. After humble beginnings as a shoemaker in Cambridge, Medway and Millis, he finally settled in Natick in 1854. Here, with a small band of Catholics, under the direction of Fr. John Walsh, he helped found St. Patrick's Parish in 1856. John Everett became sexton of the church and superintendent of the cemetery. In 1861, a growing need in the Natick Community prompted Fr. Walsh to ask John to establish a funeral undertaking business, and so a tradition of quiet, dignified and sympathetic understanding was born. Now, after four generations, that tradition is still an integral part of our service.

4 Park Street (At Natick Common)
508-653-4342



**NOWICKI
MASTER ELECTRICIANS**

Dover MA

508 785 9995

GENERAC

**SUPPORT
OUR
ADVERTISERS!**

LET'S GROW YOUR BUSINESS

Place Your Ad Here and Support Our Parish!

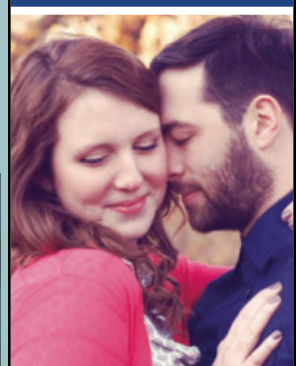
CONTACT ME Mike Cunnie

mcunnie@4LPi.com • (800) 888-4574 x3131

Victoria Haven

Exceptional Short-Term Rehab
& Skilled Nursing Care
137 Nichols St Norwood, MA
781-762-0858

catholicmatch®
Massachusetts



CatholicMatch.com/MA

Kerivan-Lane

Since
1922

Oil & Gas Heating Equipment
Ductless Heat Pump Systems
Plumbing • Fuel Oil • Diesel Fuel • Propane

HVAC Services You Can Trust
781-444-0279 • kerivanlane.com



**DOVER
Electric Co.**

Generator Installation
& Service
Residential • Commercial
508-429-7900
508-785-0198



Ad info. 1-800-477-4574 • Publication Support 1-800-888-4574 • www.4lpi.com

Most Precious Blood, Dover MA

03-0765