


ST. LAWRENCE MARTYR CATHOLIC COMMUNITY

JULY 27, 2025 | 17TH SUNDAY IN ORDINARY TIME



KNOCK
AND THE DOOR
WILL BE OPENED
TO YOU.

— LUKE 11:9 —

SEVENTEENTH SUNDAY IN ORDINARY TIME

©LPI

Rev. Msgr. Paul Dotson, Pastor

Rev. Charles Balamaze, Associate Pastor | Rev. Msgr. Peter O'Reilly, In Residence
Deacon Don Burt | Deacon Jim Egnatuk | Deacon Dale Sheckler

WEEKEND MASSES

Saturday 4:00 PM (Sunday Liturgy)
Sunday 7:00 AM, 9:00 AM,
11:30 AM, 5:00 PM

DAILY MASSES

Monday - Saturday 8:10 AM
Tuesday & Thursday 12:00 PM

ADORATION CHAPEL

Sunday 7:00 AM - 6:00 PM
Monday - Friday 7:00 AM - 3:30 PM
Saturday 8:00 AM - 5:00 PM

SACRAMENT OF RECONCILIATION

Saturday 11:00 AM - 12:00 PM

TELEPHONE NUMBERS

| | |
|-------------------------------|-------------------|
| Pastoral Center | 310-540-0329 |
| Office for Worship | 310-316-0090 |
| Office of Religious Education | 310-316-4460 |
| O.C.I.A. for Adults | 310-316-0961 |
| St. Lawrence Martyr School | 310-316-3049 |
| Youth Ministry/Confirmation | 310-316-0466 |
| Funerals | 310-540-0329 x274 |
| St. Lawrence Martyr Gift Shop | 310-540-0329 x249 |

To become a member of our community of faith, please stop by or call the
Pastoral Center at 310-540-0329 or register online: <https://www.stlm.org/im-new>

1940 South Prospect Avenue • Redondo Beach • California 90277 • 310-540-0329 • www.stlm.org



GIVING TO ST. LAWRENCE MARTYR IS EASY WITH ELEXIO

Forgot your envelope? Are you visiting us today and want to make a ONE TIME GIFT? Want to give to a special collection? Follow these easy and secure steps to Text-to-Give:

- Text **GIVE** to **424-414-STLM**.
- Follow the text instructions to complete your donation.
- Save the number as a contact in your phone to make future giving faster and easier.

You may also give by scanning this QR Code with the camera app on your cellphone or visit **STLM.ORG/GIVING**



We thank you for your generosity and support of our St. Lawrence Martyr Catholic Community.

PASTORAL CENTER HOURS JULY 27 - AUGUST 4

| | | |
|-----|------|--|
| Sun | 7/27 | 08:00 am - 1:00 pm |
| Mon | 7/28 | 08:30 am - 12:30 pm 01:30 pm - 04:00 pm |
| Tue | 7/29 | 08:30 am - 12:30 pm 01:30 pm - 04:00 pm |
| Wed | 7/30 | 08:30 am - 12:30 pm 01:30 pm - 04:00 pm |
| Thu | 7/31 | 08:30 am - 12:30 pm 01:30 pm - 04:00 pm |
| Fri | 8/1 | 08:30 am - 12:30 pm 01:30 pm - 04:00 pm |
| Sat | 8/2 | Closed |
| Sun | 8/3 | 08:00 am - 1:00 pm |
| Mon | 8/4 | 08:30 am - 12:30 pm 01:30 pm - 04:00 pm |

PRAYER FOR EVERYDAY

Lord, Restore my hope! Where I fear the future, write a new script in my heart. Where I doubt Your goodness, fill me anew. Give me steadfast hope for a beautiful tomorrow. Amen. ©LPI

Respect Life Rosary

Monday, July 28 | 7:00 pm | In the Church

The Respect Life Ministry of St. Lawrence Martyr invites all parishioners to gather in prayer for the dignity of every human life. This is a peaceful and powerful opportunity to lift our voices in support of life from conception to natural death. Whether you're a regular Rosary prayer or new to this devotion, your presence and prayers are welcome and appreciated. Come join us as we unite in faith and love for the most vulnerable among us.

St. Lawrence Martyr 70th Anniversary & Feast Day Celebrations

Saturday, August 9 | 4:00 pm Mass | 5:00 pm BBQ

Mark your calendars! Join us at the 4 pm Mass as we celebrate our Platinum Jubilee and the Feast Day of our Patron Saint! Stay for our annual BBQ in the courtyard immediately following Mass.

Adult Confirmation

Are you a baptized Catholic who has not yet received the Sacrament of Confirmation? We invite you to join our upcoming Adult Confirmation preparation classes! This is a wonderful opportunity to deepen your faith and complete your initiation into the Church. More details to come—stay tuned!

Thank You for Supporting the Walk for Life!

Thank you to all who participated in and donated to the 38th Annual Walk for Life South Bay on May 17th, benefiting the families served by the Pregnancy Help Center. St. Lawrence Martyr Church raised over \$7,000. All funds raised provide free pregnancy services like pregnancy tests, ultrasound exams, and BrightCourse education lessons to women in crisis pregnancies. Your support saves lives! supportphctorrance.org



Red Cross Blood Drive a Success!

Our recent Red Cross Blood Drive was a tremendous success! Thanks to the generosity of our donors, we exceeded our goal—collecting 42 units of blood, which will go on to help over 120 people in need of life-saving care. We are deeply grateful to everyone who donated, volunteered, and spread the word. Your selfless support makes a real difference. You can sign up now for our next Blood Drive on December 16th - we're saving lives, one donation at a time!



PRAYER REQUESTS

We pray for all those suffering illness and in need of healing and comfort.

| | | |
|---------------------|---------------------|-----------------|
| Constance Weintraub | Lindsay Thorne | Helen Wines |
| Kerrie Najjarian | Fr. Joseph Iannuzzi | Michelle Adsen |
| Mary Nosal | Diane Cole | John Sullivan |
| Samantha Gratz | Susan Ambrosi | Richard Kinkopn |
| Fernando Talley | Toni Baldwin | Dale Ziegler |
| Lisa Ziegler | Friday Laurio | Laura Levee |
| Aidan Serrano | Gary Burke | Amber Sarkesian |
| Helen Fuell | Rita Cunningham | Alex Segebre |
| Marcus Millett | Brigid Blasius | Ro Rizzo |
| | Richard Meyette | |

THE FAITHFUL DEPARTED

May all the souls of the recently departed, through the mercy of Christ, rest in peace.

| | | |
|----------------|------------|--------------|
| Demetrius Bush | Janet Caar | Helen Wilson |
|----------------|------------|--------------|

Eternal Rest Grant Unto Them, O Lord.

SUNDAY READINGS

First Reading: Far be it from you to do such a thing, to make the innocent die with the guilty so that the innocent and the guilty would be treated alike! Should not the judge of all the world act with justice?" (Genesis 18:25)

Psalm: Lord, on the day I called for help, you answered me. (Psalm 138)


Second Reading: You were buried with him in baptism, in which you were also raised with him through faith in the power of God. (Colossians 2:12)

Gospel: "And I tell you, ask and you will receive; seek and you will find; knock and the door will be opened to you." (Luke 11:9)

*Excerpts from the Lectionary for Mass ©2001, 1998, 1970 CCD.
The English translation of Psalm Responses from Lectionary for Mass © 1969, 1981, 1997,
International Commission on English in the Liturgy Corporation. All rights reserved. ©LPi*

WEEKLY READINGS

| | |
|--------------|--|
| Sunday: | Genesis 18:20-32, Colossians 2:12-14, Luke 11:1-13 |
| Monday: | Exodus 32:15-24, 30-34, Matthew 13:31-35 |
| Tuesday: | Exodus 33:7-11; 34:5b-9, 28, John 11:19-27 or Luke 10:38-42 |
| Wednesday: | Exodus 34:29-35, Matthew 13:44-46 |
| Thursday: | Exodus 40:16-21, 34-38, Matthew 13:47-53 |
| Friday: | Leviticus 23:1, 4-11, 15-16, 27, 34b-37, Matthew 13:54-58 |
| Saturday: | Leviticus 25:1, 8-17, Matthew 14:1-12 |
| Next Sunday: | Ecclesiastes 1:2; 2:21-23, Colossians 3:1-5, 9-11, Luke 12:13-21 |



THE SACRISTY

O.C.I.A. in Pastoral Center

Wednesday, August 13, 7:00 pm

ALL ARE WELCOME!



| |
|---|
| SUNDAY, JULY 27 |
| 7:00 am Michael Heslin † |
| 9:00 am Amy Sabol † |
| 11:30 am Mary Elizabeth & Joe McEniry † |
| MONDAY, JULY 28 |
| 8:10 am Ruth Platamone † |
| TUESDAY, JULY 29 |
| 8:10 am Ruth Platamone † |
| 12:00 pm Peter O'Donohoe † |
| WEDNESDAY, JULY 30 |
| 8:10 am Peggy Anderson † |
| THURSDAY, JULY 31 |
| 8:10 am Ada Galante † |
| 12:00 pm Rose Curti † |
| FRIDAY, AUGUST 1 |
| 8:10 am Thomas Roley † |
| SATURDAY, AUGUST 2 |
| 8:10 am Thomas Evans † |
| 4:00 pm Denny Hallam † |
| SUNDAY, AUGUST 3 |
| 7:00 am Fr. Fred McCallin † |
| 9:00 am Ian Maier † |
| 11:30 am Del Rosario-Catral Family |
| († Deceased) |

Parishioners are invited to offer Mass intentions for loved ones, living or deceased. A donation of \$20 is suggested. You may also add your loved one to the Book of Intentions in the church by Mary. Your offering supports our parish and the spiritual work of the Church. Thank you for your generosity.



GOSPEL MEDITATION by FR. JOHN MUIR

Once I went to a hospice facility to celebrate Last Rites for an elderly dying man. His family had told me that he had been uncommunicative for days. At the conclusion of the ritual, we began to recite the Our Father prayer. To everyone's surprise, his lips moved, clearly mouthing the words to the Lord's prayer. Stripped of most of his faculties, the man could still pray those precious God-given petitions. A lifetime of prayer had planted the words even deeper than his failing consciousness.

Do we want the Lord's prayer to be as deeply embedded in us? If we want to be people of hope, we should. Recall that our Lord immediately follows the prayer by saying: **"Ask, and it will be given to you; search, and you will find; knock, and the door will be opened to you"** (Luke 11:9). We only ask, search and knock because we hope that the request is not in vain. Everything we could possibly hope for is contained in the prayer. Praying the Our Father deepens our hope.

We should consciously pour all our hopes into the Lord's prayer; we should allow it to be an expression of hope, not simply rote words. Then, over time, it builds up our hope in God. It sinks deep into our souls and bodies. How blessed we are when these words of hope are on our lips, even when everything else seems to fail. ©LPi

(PRACTICING) CATHOLIC RECOGNIZE GOD IN YOUR ORDINARY MOMENTS

Mini Reflection: Whatever is interrupting communication between your heart and the One who crafted it, it can be overcome. There is no door thick enough, no night dark enough, no sleep strong enough.

Ask and You Shall Receive

It's easy to look at today's Gospel reading and come away with a view of God as disinterested and irritated, reluctant to give us what we need unless we bang down his door, hound him to the furthest reaches of heaven, wrench him from his reverie and force him to answer just so we'll finally go away.

Well, that's not what Jesus means by the parable of the friend at midnight — but it's also not surprising that we would think that it is. The whole point of this Gospel is that communication between God and man has been broken. It's not as easy as it once was, as it should be, as it could be.

In this parable, there exists many barriers between the supplicant and his friend. The time of day is not ideal. The door is locked. Their dispositions are opposite — one is in the middle of a REM cycle and the other is deeply agitated. They appear to be two people who are not primed to communicate well. Everything is working against them.

The same could well be said of God and the human race. Here we are in a fallen world, surrounded by sin and pain and sickness and death to the extent that it infiltrates not just our bodies but our souls, our minds, our attitudes.

We are the friend caught unprepared in the dead of night. We don't always know how to talk to God (*That door is thick! Will he hear us if we knock?*). We don't always know if we should (*It's all my fault that I ran out of loaves, after all*). We don't even know if we want to (*It's nighttime! He might be angry!*).

Everything is working against us.

It doesn't matter, Jesus tells us. Whatever is interrupting communication between your heart and the One who crafted it, the One who desires its full and irrevocable attention, it can be overcome. There is no door thick enough, no night dark enough, no sleep strong enough. So knock.

- Colleen Jurkiewicz Dorman . ©LPi

LIVE THE LITURGY

"Lord, teach us to pray." The disciples are asking how to approach God, how to communicate with Him. Jesus' answer? Have no fear, and have no embarrassment. God waits at the door. Knock. The conversation is yours to start.

©LPi

QUESTIONS OF THE WEEK

REFLECT AND RESPOND TO SCRIPTURE

1st Reading: Abraham questions God about how He passes judgment on people. What questions do you have for the Lord?

2nd Reading: Paul teaches the believers in Colossae that through his cross and resurrection from the dead, Jesus united Jews and Gentiles by their shared faith in him. How does your faith in Jesus bring you closer to others?

Gospel: Jesus encourages his disciples to be persistent and bold in praying to God. Can you think of a time when God answered a bold prayer from you? ©LPI



The daily examen is a spiritual practice derived from the writings of St. Ignatius of Loyola, the founder of the Society of Jesus. A Basque nobleman, Ignatius underwent a series of religious conversions as a young man following a wound sustained in the Battle of Pamplona in 1521. His Spiritual Exercises were first published in 1548 and form the basis of what is known today as “Ignatian spirituality.”

Many different versions of the examen have been developed over the centuries, but all are centered on the same five elements which themselves reflect Ignatius’ process of self-review and spiritual discernment.

In completing the daily examen, an individual places himself in the presence of God, prayerfully reflecting on the blessings of the day, the actions he took, and the invitation God has for his future decisions.

For more information on the examen and to find different variations of it, visit ignatianspirituality.com. ©LPI

ON THE DEATH OF A LOVED-ONE

Starting July 1, 2025, families experiencing the loss of a loved one may call 310-540-0329 x274 at any time to begin funeral arrangements at St. Lawrence Martyr. This dedicated line is monitored three times a day, and a minister will return your call within 24 hours.

See You in the *Eucharist*



VIGIL OR ANTICIPATED SUNDAY MASS

The 4PM Mass on Saturday here at SLM is termed as a “Vigil Mass” in our Bulletin. Attending this Mass satisfies our “Sunday obligation.” In some places, the “Vigil” Mass is also known as the “Anticipated” Mass because it is anticipating the readings of the next day, Sunday. To be more precise, a “Vigil” Mass has its own special texts—Christmas and Easter are the most obvious examples, but there are others, such as Pentecost. For example, the Vigil Mass of Christmas has different readings than the Christmas Mass at Midnight or at Dawn or During the Day.

An “anticipated” Mass, on the evening before Sunday, uses the same texts as Sunday—just as our 4PM Mass on Saturday uses the same readings as the next day, Sunday. Our 4PM Mass on Saturday does not have its own special texts as a “Vigil” Mass would by the example above.

Liturgist Fr. Paul Turner states: “In my view the word ‘Vigil’ is not a good description for the Saturday celebration of a Sunday Mass. It is more properly an ‘anticipated Sunday Mass.’ An anticipated Mass uses the same readings as Sunday. The Vigil Mass fulfills the obligation to participate in Sunday Mass, as does an anticipated Mass. The terms are not precisely interchangeable, though.”

In many countries, the Mass on Saturday evening that fulfills the Sunday obligation is called “anticipated” Mass. If you’re traveling to other places this summer, this information can help in scheduling your Sunday Mass attendance.

Les Rangel-Santos
Director of Worship: Liturgy & Music
les.rangelsantos@stlm.org

SLM GIFT SHOP SUMMER HOURS

Sun | 8:30 AM - 1:00 PM
Mon - Sat | Closed

310-540-0329 x249 | giftshop@stlm.org

VOTIVE CANDLES

Candles are available at the Pastoral Center or in the Gift Shop. Candles are \$5.00 ea. and stay lit for five days.

NO DONUTS THIS WEEK

We look forward to sharing Coffee & Donuts with you in the Fall.

SOBER, NOT SOMBER

Meeting of Alcoholics Anonymous
Sundays | 10:15 AM
Pastoral Center (Office)

The meetings are mixed, closed, with handicapped access.
More Info | 310-540-0329 x 545
LA Central Office | 323-936-4343

DON'T DRINK - CALL FIRST

BAPTISM MINISTRY

Each baby baptized at SLM receives a free handmade quilt crafted by a lovely parishioner, or a blanket crocheted by our Knitting Ministry.

If you want to support this ministry, you may drop off a monetary donation at the Pastoral Center. Please indicate **Baptism Ministry**.

Interested in
volunteering?
Looking for
support?



CAREGIVERS SUPPORT

Sun, Jul 27, 10:30 AM | Pastoral Center
Gathering of people who are directly or indirectly affected by care giving of others.
310-540-0329 x 540

RESPECT LIFE ROSARY

Mon, Jul 28, 7:00 PM | In the Church
Dedicated to bringing the message of life to the parish & the world.
310-678-2583 | DaleSheckler@gmail.com

SPIRITUAL BOOK CLUB

Wed, Aug 6, 10:00 AM | Pastoral Center
Small Community of Faith who love reading & discussing books.
310-415-0876

CATECHISM & COFFEE

Thu, Aug 7, 9:00 AM | Parish Hall
Discussion of the Catechism of the Catholic Church guided by Fr. Charles.
310-540-0329

YOUNG ADULT BIBLE STUDY

Thu, Aug 7, 6:00 PM | Pastoral Center
Young Adult fellowship and formation guided by Fr. Charles.
310-540-0329

PADDLE N PRAISE

Sat, Aug 9 | Lower Courts
All adults 18 and over invited to fun, faith and fellowship through Pickleball.
424-408-9738

GRIEF SUPPORT GROUP

Sun, Aug 10, 10:30 AM | Pastoral Center
Group meeting for those mourning the loss of a loved one.
310-540-0329 x 540

MICHELANGELO MINISTRY

Mon, Aug 11, 10:00 AM | Parish Hall
Explore the artist within you & be part of a community who love the creative process.
310-540-0329 x 540

LGBT+ (ONE HEART) MINISTRY

Tue, Aug 12, 7:00 PM | Pastoral Center
Ministry open to members of the LGBT+ Community, family, friends & allies.
Don.Burt@stlm.org

ONE IN CHRIST MINISTRY

Wed, Aug 13, 7:00 PM | Pastoral Center
A ministry for racial healing and cultural celebration. Come pray with us.
310-540-0329 x 276

ST. KATERI CIRCLE

Fri, Aug 15, 6:00 PM | Call for location
A Native American prayer group devoted to St. Kateri Tekakwitha.
310-901-2432

WOMEN IN TRANSITION

Sun, Aug 17, 10:30 AM | Pastoral Center
A group of women supporting each other through life's many transitions.
310-540-0329 x 540

READING ROUNDUP

Mon, Aug 18, 10:00 AM | Parish Hall
Silently read your own book and then discuss your book, and why you like it!
310-540-0329 x 540

F.A.I.T.H. MINISTRY

Thu, Aug 21, 7:00 PM | Parish Hall
Supports the victims of human trafficking in the South Bay and Los Angeles County.
310-540-0329 x 380

NAMI FAMILY SUPPORT

Wed, Aug 27, 7:00 PM | Parish Hall
Family Support Group for those with loved ones suffering from mental illness.
310-792-0244

CHRISTIAN FAMILY MOVEMENT

TBD
Small groups discuss topics through the lens of faith and provide support for each other.
310-722-0176

ADDITIONAL CONTACTS

Stephen Ministry Message Line

Christian friend to listen, pray and support you in difficult times.
(Confidential) 310-540-0329 x375

Saturday Street Ministry

Provide food & clothing to homeless in LA.
310-540-0329 x276

Open Arms Ministry

Friendly visits to home bound parishioners.
310-540-0329 x 540

Caregivers, Take Time To Care For Yourself

An informal gathering of people whose lives are directly or indirectly affected by their caregiving of parents, children, spouses, or anyone whose lives are directly or indirectly affected by their caregiving. Our group is a safe place where feelings about God, spirituality, and struggles are shared; where issues of isolation and loneliness are addressed; where, as a group, individuals find the courage and strength to continue on; where caregivers teach each other ways to strengthen their relationship with God and with our community.

Fourth Sunday of the month @ 10:30 AM in the Parish Center.

RESPECT LIFE MINISTRY
invites you to participate in a

Rosary for Life
4th Monday of each month, 7 pm
in the church

310-678-2583
dalesheckler@gmail.com



SPIRITUAL BOOK CLUB

All are welcome to join this Small Community of Faith.
Our new book is **Imagine You Walked with Jesus: A Guide to Ignatian Contemplative Prayer** by Jerry Windley-Daoust.
Call for more information, or just show up.

1st and 3rd Wed of each month | 10:00am | Pastoral Center
Jeanine Gallagher | 310-415-0876



Join us for a cup of coffee as we chat about our Faith and the Catechism of the Catholic Church. A round table discussion guided by Fr. Charles where we discuss various topics of interest. We meet the first Thursday of every month at 9 am in the Parish Hall. Questions/topics may be sent in advance to catechism.coffee@gmail.com.

LET'S GROW TOGETHER IN OUR FAITH

YOUNG ADULT MINISTRY BIBLE STUDY

Join us in the Pastoral Center at 6:00 PM every 1st & 3rd Thursday of each month as we break open the Word and have honest conversations about our faith. ALL YOUNG ADULTS WELCOME!



PICKLEBALL AT ST. LAWRENCE MARTYR

All adults aged 18 & above are welcome to participate in the fastest-growing sport in the nation. Join us for fun, faith, & fellowship.

2nd & 4th Saturday | 9:00 AM
SLM BASKETBALL COURTS



SLM SCHOOL SCRIP

Tue & Thu | 8:00 AM - 2:45 PM

310-316-3049

Closed for the Summer

Still available from the Parish Office during the Summer.

PRAYER SHAWLS

Shawls and blankets available to give to anyone who needs an uplift. The shawls and blankets are free of charge and available in the Pastoral Center.

F.A.I.T.H. MINISTRY

The F.A.I.T.H. (Freedom & Intervention for the Trafficking of Humans) Ministry supports the victims of human trafficking in the South Bay and in Los Angeles County.

We are collecting toiletry items for victims of human trafficking. The items can be dropped off at the Pastoral Center during normal business hours.

faith.ministry@stlm.org
310-540-0329 x 380

FOOD PANTRY

Saturday | 8 AM - 10 AM

1st Sunday | 8 AM - 11 AM

We **prepare bags of groceries** for individual families and **sack lunches** given to the homeless. For a list of preferred donations please visit www.stlm.org/giving-back.

Monetary donations may be given online through Elexio Giving, mailed or dropped in the Pastoral Center mail slot. Please indicate **Food Pantry**.

Thank you for your ongoing generosity as we continue to serve those in need.

310-540-0329 x 276



Keep in touch with us
via email & text
Text **STLM** to **84576**

SAFEGUARD THE CHILDREN: AUTHORITY FIGURES AND BOUNDARY RESPONSIBILITIES

When an adult uses their authority to control or manipulate a situation, this puts children and vulnerable adults at risk for abuse. Manipulation can often occur through grooming behaviors, which can lead to boundary violations and ultimately abuse. It is always the responsibility of the adult to maintain appropriate, healthy boundaries with children in their care. For guidelines on how to interact with minors at our parishes, schools and ministries please visit <https://lacatholics.org/policies-and-procedures/>, and for more tips read the VIRTUS® article "Ministerial Boundaries, Power, and Authority" at lacatholics.org/did-you-know/.



SLM WOMEN'S CORNERSTONE
St. Lawrence Martyr Church

Monthly Rosary

First Monday of each Month

Monday, August 4, 7:00 pm
In the Church

All Are Welcome!



HOLY HOUR

August 7, 2025 | 7 pm | In the Church

SCRC Catholic Renewal Convention

A New

HOPE

Rom. 15:13

Saturday & Sunday
August 16 & 17, 2025

Anaheim Marriott Hotel Ballrooms • Anaheim, CA

Register Online: events.scr.org




NEW THINGS: A RETREAT DAY OF RENEWAL
For Grieving Mothers & Grandmothers
Saturday, August 30 | American Martyrs



Faith
Trusting In The God
Who Waits For You

SLM MEN'S
SILENT RETREAT
September 12-14

Mater Dolorosa
Passionist
Retreat Center
Sierra Madre, CA

Lee Barden | 310-940-8200




SLM WOMEN'S CORNERSTONE
St. Lawrence Martyr Church

Women's Cornerstone Retreat

February 6-7, 2026




Celebrating St. Lawrence, our Patron Saint & the Platinum Jubilee of our Parish

Saturday, August 9 | 4:00 pm Mass | 5:00 pm BBQ



St. Lawrence, a deacon in 3rd-century Rome, is one of the Church's most beloved martyrs. Though little is known about his early life, history remembers him for his humility, courage, and deep love for the poor. During the persecution of Christians under Emperor Valerian in 258 AD, Lawrence was entrusted with the material goods of the Church and the care of the poor in the city.

When Roman authorities demanded he turn over the Church's treasures, Lawrence asked for a few days. During that time, he gave the wealth he had to the poor. Then he gathered together the homeless, the sick, and the needy and presented them to the officials, declaring, "These are the treasures of the Church." For this bold act of faith and defiance, Lawrence was imprisoned, tortured, and ultimately martyred—burned alive on a gridiron. It is said that in the midst of his suffering, he retained his sense of humor, saying to his executioners, "Turn me over—I'm done on this side."

St. Lawrence's witness is as powerful today as it was over 1,700 years ago. He reminds us that the Church's mission is not about wealth or status, but about compassion, service, and lifting up the least among us. His life calls us to remember that the true riches of the Church are found in its people—especially the poor, the vulnerable, and the forgotten.

As we celebrate both the feast day of our patron saint and the platinum jubilee of our parish, we look to St. Lawrence as a model of joyful service, courageous faith, and generous love.

You're Invited! Come celebrate with us on the Feast of St. Lawrence, Saturday, August 9. We will begin with Mass at 4:00 PM, followed by a joyful Parish Barbecue in the church courtyard. All are welcome for an evening of food, fellowship, and faith as we honor our patron and give thanks for the blessings of our parish community.

Generational Estate Planning for Catholic Families.

Preserving assets,
promoting faith across generations



Founding Attorney:

Angela Klenk

Parishioner and Alumna of UCLA,
Notre Dame & Bishop Montgomery High School

Certified Specialist in
Estate Planning,
Trust & Probate Law

by the State Bar of California Board of Legal Specialization



424.400.6435

info@beachcitiesestatelaw.com

Casa Blanca Builders
Residential • New Construction
Remodeling
Since 1990

Saul Macias (310) 266-2597
General Contractor Lic. 878015



A family-run deli offering a wide range of breakfast burritos, sandwiches, salads, fresh poke, Sicilian-style pizzas and catering services. Monday through Saturdays: 10am to 6pm Closed Sunday
1908 S. Pacific Coast Hwy., Redondo Beach
310-316-1908 • rierasplace.com • IG: @rierasplace

VILLA SORRENTO
23450 Madison St
Torrance, CA
(310) 539-6826
villasorrentoassistedliving.com

SHORT STAFFED?

Place an ad here to find new
local talent for your business.



CALL 800-950-9952

NAZARETH HOUSE

ASSISTED LIVING COMMUNITY

For information and to schedule a tour contact:
Josephine Wazir - EXECUTIVE DIRECTOR
JWazir@nazarethhousela.org | 310-839-2361
3333 Manning Ave, Los Angeles, CA 90064

New Dining Room | Daily Mass | Beautiful Gardens

RCFE
#191600600

Where LA Catholics Go to Stay Connected.



ANGELUS

Subscribe today for just \$30.00 **\$19.95**

Two easy ways to order: AngelusNews.com/Bulletin | 844-245-6630



Experienced local senior care
for total peace of mind.

424.772.6604

VisitingAngels.com/Torrance

Each Visiting Angels agency is independently owned and operated. License #194700020
*2023 Visiting Angels is a registered trademark of Living Assistance Services, Inc.



THE MORTUARY
AT GREEN HILLS



Scan the QR code to begin
advance funeral planning today.

310-831-0311 greenhillsLA.com

Advance funeral planning is a gift, an act of love that grants your family and loved ones peace of mind after you've gone.

When you partner with us, we will organize your information, document your wishes, and ease the process for the ones you love most.

CENTURY 21
FINE HOMES
& ESTATES.
Union Realty Co.



Jennette Toderick, Broker/CEO, Parishioner
(310) 418-6318 • www.c21union.com

A portion of commission donated back to the school upon closing in your name

corner bakery
FREE COFFEE
with any Breakfast Entree Purchase

JOIN US AROUND THE CORNER!
Monday - Sunday 6am - 9pm
1868 S Pacific Coast Hwy
Redondo Beach, CA 90277
OFFER: 4080 EXPIRES: 7/30/25

"Empower special needs students at
our school on my property in Cogua, Colombia."



Thank you for your Donation to Fundación Soles Marianos for
Students with Special Needs in Colombia
Questions: Contact Herman Villoria, hermanv58@yahoo.com



NOW OPEN
NORTH TORRANCE
18120 Hawthorne Blvd
SUN-THU 9AM-1AM | FRI-SAT 9AM-2AM

ORDER
NOW!



IF YOU LIVE ALONE

MDMedAlert!
✓ Ambulance ✓ Police/Fire
✓ Family/Friends ✓ GPS & Fall Alert
CALL NOW! 800.809.3570

STARTING AT
\$19.95
/mo.

md-medalert.com



CATHOLIC
CEMETERIES
& **MORTUARIES**

EVERLASTING FAITH. EVERLASTING LIFE.

A ministry of the Church
serving the faithful.

Learn about our 11 locations in
Los Angeles, Ventura and
Santa Barbara counties

(213) 637-7801 CatholicCM.org



For ad info. call 1-800-950-9952 • www.4lpi.com

St. Lawrence Martyr Church, Redondo Beach, CA

C 4C 05-4027

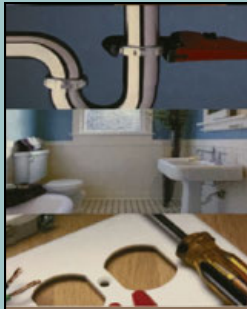


TRADITIONAL FUNERALS
CREMATION | PRE-PLANNING

Rice Center
Torrance FD 1113

White & Day Center
Redondo Beach FD 825

310-792-7599 LAFuneral.com



Your **ONE** stop shop for all your repair and improvement needs;
from complete facelifts to the smallest fix.

- Interior/Exterior Paint • Popcorn Removal • Finish Carpentry • Landscape
- Re-texturing • Cabinet Repair/Replacement • Fencing
- Flooring • Electrical • Power Washing
- Re-glazing • Drywall • Patio and Deck Repair
- Plumbing • Re-screening

CSLB. #1065288 • Matthew Quinn • 310-808-3717
matt@heckofadeal.net • www.heckofadeal.net

LICENSED & INSURED

ADT-Monitored Home Security
Get 24-Hour Protection From a Name You Can Trust

- Burglary • Flood Detection
- Fire Safety • Carbon Monoxide

833-287-3502



CALIFORNIA AIR
Commercial and Residential
Heating and Air Conditioning

**Heating And Air
Conditioning
Residential
Repair
Service**



Call us Today To Book Now
310-530-0504
www.californiaaac.com

**SOUTH BAY
EQUITY LENDING**

Refinance
Purchase
Reverse Mortgages

Matthew Hadnett 310-378-8212
Mortgage Loan Broker - Active Parishioner
Cal-BRE #1319592 - NMLS #313412

**3 FREE
Music
Lessons**
310-749-7099
All Instruments!
SunsetLearningStudio.com
1 free trial-2 more free w/1st 10-pack



More get
up and go,
for you.

Gain more time to live your life
thecanterbury.org | (310) 421-4141

An ECS senior living community. Proudly nonprofit.
5601 Crestridge Rd. Rancho Palos Verdes, CA 90275
RCFE 181-603774, COA 257

Physical Therapy at
The Canterbury

the canterbury
The Art of Possibility



GREEN HILLS
FD 1175

SAL CORREA
ADVANCE PLANNING ADVISOR
Hablo Español
Cell (310) 987-1104

E-Mail SCorrea@GreenHillsLA.com
PRE-PLANNING IS AN ACT OF LOVE, A GENEROUS GIFT
TO YOUR FAMILY AND FRIENDS, ALLOWING THEM TO
MOURN AND GRIEVE PEACEFULLY.
I HAVE ASSISTED HUNDREDS OF FAMILIES PLAN
THEIR LIFE CELEBRATION IN ADVANCE. I CAN MAKE THE
UNCOMFORTABLE PROCESS EASIER FOR YOU.

LIC. 0M61169

Peter Wollner • Real Estate Broker
Residential • Commercial
Sales • Leasing • Management
Lifelong Parishioner/SLM Alumni
NHL Brokers
310-259-6698 DRE#01381742

**DOES YOUR NONPROFIT
ORGANIZATION NEED
A NEWSLETTER?**

Engaging, ad-supported
print and digital newsletters
to reach your community.

Visit lpicommunities.com



SHORT STAFFED?

Place an ad here to find new
local talent for your business.



CALL 800-477-4574



Lic 957812

Free Camera Inspection
With Sewer Cleaning
MUST HAVE
Proper Clean Out
\$129

primetimeplumbing.net
310-984-0377

Drain Cleaning
\$99

\$75 OFF
ANY Plumbing Repair
of \$300 or More



INDOOR VOLLEYBALL SUMMER CAMPS & HIGH PERFORMANCE CLINICS

FULL WEEK CAMPS
6/30 - 8/15
DAILY SESSION TIMES:
9-11 AM • NOON - 2 PM • 3-5 PM



FOR BOYS & GIRLS • 8-18 YEARS OLD
ALL LEVELS: BEGINNER
INTERMEDIATE • ADVANCED

LOCATION: LA GALAXY VOLLEYBALL COURTS
540 MAPLE AVE., TORRANCE 90503

**FULL WEEK CAMPS HIGH
PERFORMANCE CLINICS**
7/7 - 8/15
DAILY SESSION TIMES:
NOON - 2 PM • 3-5 PM • 6-8 PM

FOR BOYS & GIRLS • 12+ YEARS OLD
INTERMEDIATE: CLUB TEAM
EXPERIENCE REQUIRED
ADVANCED: HIGH SCHOOL PLAYERS



SCAN ME



310-546-9150

WWW.BEACHCITIESVBC.COM

WEEKLY SESSION RATES: 1 SESSION - \$240
2 SESSIONS - \$395 • 3 SESSIONS - \$550



FLOOR COVERINGS
International

One team. The whole project.
The Stars of FlooringSM.

310-974-1141 | fcisouthbay.com

BOOK A FREE FLOORING CONSULTATION TODAY!



SCAN ME



For ad info. call 1-800-950-9952 • www.4lpi.com

St. Lawrence Martyr Church, Redondo Beach, CA

B 4C 05-4027



Tara McGuinness

Attorney, Collaborator & Mediator

Family Law, Trusts & Estates

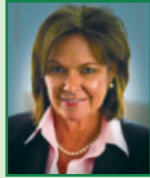
3424 W. Carson Street

Suite 570, Torrance

310.793.0800

www.taramcguinness.com

Serving South Bay For More Than 43 Years



kingdom outdoor living

DESIGN • BUILD • SOLAR



Located here in south
Redondo Beach

**"We, ALSO, help you
connect to a higher power!"**

Outdoor design/build
Residential/Commercial SOLAR

License #1063267

Please call for a
shining free consult!

310-421-0014
KOLsocial.com

SENIOR CARE

Thrive in Your Own Home



**A Peaceful Way
HOME CARE**

apeacefulwayhomecare.com

- Compassionate
- Trustworthy
- Reliable
- Family owned & operated
- Licensed/Bonded/Insured

310-377-3776

Terry McGovern/Parishioner



**GOOD
DERMATOLOGY**



Consuelo
David
MD, MSC



Noah
Craft
MD, PhD



Young
Kwak
MD

(310) 405-0693

www.goodderms.com

3640 Lomita Blvd Ste 301 • Torrance

Vince DeLuca

REALTOR – Broker

Active Parishioner

310-356-4232

ESTATE PROPERTIES

Harbor Terrace

Full Service Senior Living

- Independent Apartments
- Social Programs
- Meals & Housekeeping
- Transportation
- Assisted Living Services

435 W. 8th St., San Pedro, CA 90731

(310) 547-0090

www.HarborTerraceRetirement.com



SHORT STAFFED?

Place an ad here to find new
local talent for your business.



CALL 800-477-4574

Perry Klokkevold, DDS, MS, FACD

Board Certified Periodontist & Implant Surgeon

**COMPASSIONATE, HIGH QUALITY
CARE, CUTTING-EDGE TECHNOLOGY
AND MINIMALLY INVASIVE TECHNIQUES
ENSURE PRECISION AND COMFORT.**



Dental Implants | Bone Grafts

Ridge Augmentation

Periodontal Disease

Guided Tissue Regeneration

Gum Grafts

Esthetic Procedures



PERMADENT

23430 Hawthorne Blvd, Suite #345 Torrance, CA 90505

310.325.9969 - www.permadent.com

SUPPORT OUR ADVERTISERS!



Water Damage Restoration • Sewage
Backup and Cleanup • Mold Removal
Fire and Smoke Damage • Disaster Restoration
Commercial Property Damage

Mention this ad for 10% discount

310-600-3780 • 911restorationsouthbayla.com



**CHERISH
—HOSPICE—**

2340 Plaza Del Arno Ste 230 • Torrance, CA 90501

(310) 320-1677

www.cherishhospice.com

Quality of Health is our Commitment to you!



**Suzy
Zimmerman**
AGENT

Lic. #
0F71296



Bus 310.377.9531

Fax 310.377.0954

www.ZimZimInsurance.com

suzy@zimziminsurance.com



**FREE
AD DESIGN**

with purchase
of this space

**CALL
800-950-9952**

GUITAR LESSONS!

SLM Guitar Instructor,
Joe DiResta offers in-home, private
guitar and bass lessons. Joe is a USC
music grad & has over **17 years** of
teaching & performing experience.

Call today to schedule your **FREE LESSON!**

310.408.4142



**DOES YOUR NONPROFIT
ORGANIZATION NEED
A NEWSLETTER?**

Engaging, ad-supported
print and digital newsletters to
reach your community.

Visit 4picommunities.com



OUR COMMON
NEWSLETTER

NOVEMBER EDITION



Scan to
contact us!

**LET'S GROW
YOUR BUSINESS**

Place Your Ad Here
and Support Our Parish!

**CONTACT ME
Mike McAleer**

MMcAleer@4LPi.com

(800) 477-4574 x6307



For ad info. call 1-800-950-9952 • www.4lpi.com

St. Lawrence Martyr Church, Redondo Beach, CA

A 4C 05-4027