

# ST. LAWRENCE MARTYR CATHOLIC COMMUNITY

AUG 24, 2025 | 21ST SUNDAY IN ORDINARY TIME



## STRIVE TO ENTER THROUGH THE NARROW GATE.

— LUKE 13:24 —

TWENTY-FIRST SUNDAY IN ORDINARY TIME

Rev. Msgr. Paul Dotson, Pastor

Rev. Charles Balamaze, Associate Pastor | Rev. Msgr. Peter O'Reilly, In Residence  
Deacon Don Burt | Deacon Jim Egnatuk | Deacon Dale Sheckler

### WEEKEND MASSES

Saturday 4:00 PM (Sunday Liturgy)  
Sunday 7:00 AM, 9:00 AM,  
11:30 AM, 5:00 PM

### DAILY MASSES

Monday - Saturday 8:10 AM  
Tuesday & Thursday 12:00 PM

### ADORATION CHAPEL

Sunday 7:00 AM - 6:00 PM  
Monday & Friday 7:00 AM - 3:30 PM  
Saturday 8:00 AM - 5:00 PM

### SACRAMENT OF RECONCILIATION

Saturday 11:00 AM - 12:00 PM

### TELEPHONE NUMBERS

Pastoral Center	310-540-0329
Office for Worship	310-316-0090
Office of Religious Education	310-316-4460
O.C.I.A. for Adults	310-316-0961
St. Lawrence Martyr School	310-316-3049
Youth Ministry/Confirmation	310-316-0466
Funerals	310-540-0329 x274
St. Lawrence Martyr Gift Shop	310-540-0329 x249

To become a member of our community of faith, please stop by or call the  
Pastoral Center at 310-540-0329 or register online: <https://www.stlm.org/im-new>

1940 South Prospect Avenue • Redondo Beach • California 90277 • 310-540-0329 • [www.stlm.org](http://www.stlm.org)



### GIVING TO ST. LAWRENCE MARTYR IS EASY WITH ELEXIO

Forgot your envelope? Are you visiting us today and want to make a ONE TIME GIFT? Want to give to a special collection? Follow these easy and secure steps to Text-to-Give:

- Text **GIVE** to **424-414-STLM**.
- Follow the text instructions to complete your donation.
- Save the number as a contact in your phone to make future giving faster and easier.

You may also give by scanning this QR Code with the camera app on your cellphone or visit **STLM.ORG/GIVING**



*We thank you for your generosity and support of our St. Lawrence Martyr Catholic Community.*

### PASTORAL CENTER HOURS AUGUST 24 - SEPTEMBER 1

Sun	8/24	08:00 am - 1:00 pm
Mon	8/25	08:30 am - 12:30 pm 01:30 pm - 04:00 pm
Tue	8/26	08:30 am - 12:30 pm 01:30 pm - 04:00 pm
Wed	8/27	08:30 am - 12:30 pm 01:30 pm - 04:00 pm
Thu	8/28	08:30 am - 12:30 pm 01:30 pm - 04:00 pm
Fri	8/29	08:30 am - 12:30 pm 01:30 pm - 04:00 pm
Sat	8/30	Closed
Sun	8/31	08:00 am - 1:00 pm
Mon	9/1	<b>Labor Day Office Closed</b>

## PRAYER FOR EVERYDAY

Good Shepherd, Guide me through the narrow gate. Remove from me anything that distracts me from You, Your love, Your invitation, Your mission. Keep me close to You, familiar at every step. Amen. ©LPI

### Tea for God's Children Fundraiser Thank You

With an abundance of gratitude, we sincerely thank our St. Lawrence Martyr Priests, Deacons, Staff and Parishioners for your support. Your generosity allowed F.A.I.T.H. Ministry to donate \$ 8,363.61 to Gems Uncovered. This organization's mission is to help young men and women affected by Human Trafficking rebuild their lives so that they can move from a life of hopelessness to a life of purpose. For more information, please visit their website at **GemsUncovered.org**.

Please continue to pray for the victims and survivors of human trafficking and sexual exploitation. We also ask that you pray for traffickers, pornographers and buyers of services, that God may change their hearts and minds and stop their exploitation of victims. Thank You and God Bless



### St. Lawrence Martyr School Non-Discrimination Policy



The school, mindful of its mission to be a witness to the love of Christ for all, admits students regardless of race, color, national origin, and/or ethnic origin to all rights, privileges, programs, and activities generally accorded or made available to students at the school.

The school does not discriminate on the basis of race, color, disability, medical condition, sex, or national and/or ethnic origin in the administration of educational policies and practices, scholarship programs, and athletic and

other school-administered programs, although certain athletic leagues and other programs may limit participation and some archdiocesan schools operate as single-sex schools.

While the school does not discriminate against students with special needs, a full range of services may not always be available to them. Decisions concerning the admission and continued enrollment of a student in the school are based upon the student's emotional, academic, and physical abilities and the resources available to the school in meeting the student's needs.

[Note that this School Student Non-Discrimination Policy does not provide nor imply that the archdiocese waives any legal exceptions or exemptions that may apply to it as a religious nonprofit organization.]

This Catholic Elementary School publishes the above policy in the staff and parent/student handbooks, public relations/recruitment brochures and in other publications such as the parish bulletin and school newspaper. The school also publishes applicable grievance procedures in the staff and parent/student handbooks.

PRAYER REQUESTS

We pray for all those suffering illness and in need of healing and comfort.

Antonio Borromeo	Margaret Machuca	Anne Dale
Carolyn Epps	Diane Cole	Salene Chavez
Msgr. Gary Bauler	Dale Ziegler	Lisa Ziegler
Margie Morsches	Carol Campbell	Anne Lafranchi
Les Rangel-Santos	Monica Rangel-Santos	Gayle Meyer

THE FAITHFUL DEPARTED

May all the souls of the recently departed, through the mercy of Christ, rest in peace.

Krissy Carlos	Petra Castellanos	Jaksa Barbic
---------------	-------------------	--------------

Eternal Rest Grant Unto Them, O Lord.

SUNDAY READINGS

**First Reading:** I know their works and their thoughts, and I come to gather nations of every language; they shall come and see my glory. (Isaiah 66:18)

**Psalms:** Go out to all the world and tell the Good News. (Psalm 117)

**Second Reading:** So strengthen your drooping hands and your weak knees. Make straight paths for your feet, that what is lame may not be disjointed but healed. (Hebrews 12:12-13)

**Gospel:** For behold, some are last who will be first, and some are first who will be last.” (Luke 13:30)

Excerpts from the Lectionary for Mass ©2001, 1998, 1970 CCD.  
The English translation of Psalm Responses from Lectionary for Mass © 1969, 1981, 1997,  
International Commission on English in the Liturgy Corporation. All rights reserved. ©LPi

WEEKLY READINGS

Sunday:	Isaiah 66:18-21, Hebrews 12:5-7, 11-13, Luke 13:22-30
Monday:	1Thessalonians 1:1-5, 8b-10, Matthew 23:13-22
Tuesday:	1 Thessalonians 2:1-8, Matthew 23:23-26
Wednesday:	1 Thessalonians 2:9-13, Matthew 23:27-32
Thursday:	1 Thessalonians 3:7-13, Matthew 24:42-51
Friday:	1 Thessalonians 4:1-8 (429), Mark 6:17-29
Saturday:	1 Thessalonians 4:9-11, Matthew 25:14-30
Next Sunday:	Sirach 3:17-18, 20, 28-29, Hebrews 12:18-19, 22-24a, Luke 14:1, 7-14



SUNDAY, AUGUST 24

- 7:00 am | Ruth Platamone †
- 9:00 am | Maureen Cash †
- 11:30 am | Maria Ibarra †
- 5:00 pm | Fern MacDonald †

MONDAY, AUGUST 25

- 8:10 am | Pedro Duran †
- Krissy Carlos †

TUESDAY, AUGUST 26

- 8:10 am | Kathy O’Herron
- 12:00 pm | Luis Aguirre †

WEDNESDAY, AUGUST 27

- 8:10 am | Teodoro & Rosina Chiaravalloti †

THURSDAY, AUGUST 28

- 8:10 am | Roxy & Christopher Sigua
- 12:00 pm | James Michael Barrable †

FRIDAY, AUGUST 29

- 8:10 am | Remigio Gonzales †


SATURDAY, AUGUST 30

- 8:10 am | Wolford & Ritter Families
- 4:00 pm | Ed & Alanna Kennedy

SUNDAY, AUGUST 31

- 7:00 am | Alvaro Fernandez †
  - 9:00 am | Brenda Argano †
  - 11:30 am | Phyllis DeCrescenzo
- († Deceased)

Parishioners are invited to offer Mass intentions for loved ones, living or deceased. A donation of \$20 is suggested. You may also add your loved one to the Book of Intentions in the church by Mary. Your offering supports our parish and the spiritual work of the Church. Thank you for your generosity.



CHURCH HIERARCHY

O.C.I.A. in Pastoral Center

Wednesday, September 3, 7:00 pm

ALL ARE WELCOME!





## GOSPEL MEDITATION by FR. JOHN MUIR

I've been hiking Camelback Mountain in Phoenix, Arizona most of my life. It is a vigorous forty-five minutes to the top. Near the peak, the end suddenly appears much further away, and steeper. At that moment, a descending hiker often offers encouragement: "Keep going! The peak is right there. It's not as far as it looks. You can do it!" It usually works. After another five minute push, you summit and enjoy a glorious panorama of the Sonoran Desert in the Valley of the Sun.

When Jesus is asked about how many people are saved, he says: **"Strive to enter through the narrow gate" (Luke 13:24)**. How many? Strive! Focus on your journey. What does heavenly census taking have to do with you or me? How would it help a hiker on a mountain to ask the others coming down, "How many people are going to make it to the top?" A normal response would be something like: "How is that a relevant question? Carry on!"

Jesus links one virtue directly to salvation: perseverance (cf. Matt 24:13; *hypomone* in Greek). Strive! Endure! Keep going! The one absolutely necessary virtue is perseverance, to not give up on our journey. The mountain we struggle to climb is often our own weakness, failures, and sins. Persevere in prayer. Keep celebrating the sacraments. Embrace daily duties. With God's grace, you are strong enough to keep going. Perhaps the peak is not as far away as you might fear. Keep going! ©LPi

## (PRACTICING) CATHOLIC RECOGNIZE GOD IN YOUR ORDINARY MOMENTS

**Mini Reflection:** Jesus' whole thing was that you can sit with us, whoever you are, wherever you're from and whatever you've done. But there are a lot of lunch tables in the world, and not everyone wants to be at one with rules like "repent" and "be good to that person you really don't like."

### Heaven and Regina George

There are certain phrases that serve as a kind of shibboleth for millennials, a dog whistle that only ears formed between 1981 and 1996 can discern. "You can't sit with us!" is one of those phrases.

It's from the movie *Mean Girls*, (which, I hear from my younger family members, has now become cool with the kids again, so maybe my point about it being niche is incorrect). The character Regina George, merciless ruler of the cool kids, is rejected from the ultra-exclusive lunch table she herself formed when her minions, tired of her cruelty, serve her the most devastating words a teenager can hear in public: "You can't sit with us."

So passes earthly glory, as they say.

At first blush, this Gospel gives "Mean Girls" vibes. We have an image of the unlucky masses clamoring for entry into the kingdom of heaven as God locks the door against them, saying, "I do not know where you are from."

Very "you-can't-sit-with-us."

But we need to remember that the people pounding on the door of heaven in today's Gospel aren't people who wanted a seat at God's lunch table — at least, not until it was the only lunch table left, because they had Regina George'd their way out of all the other ones.

Jesus' whole thing was that you can sit with us, whoever you are, wherever you're from and whatever you've done. But there are a lot of lunch tables in the world, and not everyone wants to be at one with rules like "repent" and "be good to that person you really don't like." It's not always an easy table to sit at, especially when there are so many other options.

We have to choose heaven before heaven becomes our only choice.

- Colleen Jurkiewicz Dorman . ©LPi

## ON THE DEATH OF A LOVED-ONE

Starting July 1, 2025, families experiencing the loss of a loved one may call 310-540-0329 x274 at any time to begin funeral arrangements at St. Lawrence Martyr. This dedicated line is monitored three times a day, and a minister will return your call within 24 hours.

## QUESTIONS OF THE WEEK

### REFLECT AND RESPOND TO SCRIPTURE


**1st Reading:** Isaiah reveals to us God's plan to gather and unite all His people and witness His glory in the age to come. What are you hoping for in the future?

**2nd Reading:** The author of Hebrews offers words of encouragement for community members struggling and discouraged in their faith. Is there a friend or co-worker you could look to support this week?

**Gospel:** Jesus speaks to the crowds of the dire consequences of rejecting his call to salvation. What could be some effective ways to bring others to faith in Jesus? ©LPi

## LIVE THE LITURGY

"Strive to enter through the narrow gate," Jesus tells us. "Many will attempt...but will not be strong enough." So let us never be so foolish that we rely on our own strength. Narrow does not mean unpassable — not if we ask for help. ©LPi



SLM WOMEN'S CONGREGATION  
St. Lawrence Martyr Church

## Monthly Rosary

First Monday of each Month

Monday, September 1, 7:00 pm  
In the Church

All Are Welcome!



# HOLY HOUR

Sept 4, 2025 | 7 pm | In the Church

## See You in the *Eucharist*

### THE BOOK OF GOSPELS

After the short silence after the Second Reading during the Liturgy of the Word of the Sunday Mass, the priest stands (or the deacon) to bring the Book of Gospels from the altar to the ambo (where the scripture readings are proclaimed). Here at SLM since the Gospel Acclamation or "Alleluia" is sung to accompany the procession of the Book of Gospels, this acclamation is sung once the book is airborne. The procession of the Book of Gospels during Mass signifies reverence for the Scripture and highlights the importance of the Gospel in the liturgy. This procession is often accompanied by incense, candles, and the singing of the Gospel Acclamation, which enhances the solemnity of the moment and engages the senses of the assembly.

The Book of Gospels is a liturgical book that contains all the Gospel texts used during Mass. Its procession emphasizes the centrality of the Gospel in Christian worship, symbolizing the presence of Christ among the assembly. This practice is rooted in ancient traditions and has been reintroduced in modern liturgical practices to enhance the reverence for scripture. During the Entrance Procession, the deacon or, in his absence, a lector carries the Book of Gospels. It is held at a modest elevation, facing outward so that it can be seen by the faithful. Upon reaching the altar, the Book of Gospels is placed reverently, typically lying down, which signifies its importance and the presence of Christ in the Word.

The practice of processing the Book of Gospels has historical roots, with its use becoming more pronounced after the liturgical reforms of Vatican II. The General Instruction of the Roman Missal (GIRM) specifies that the Book of Gospels should be carried in procession, distinguishing it from the Lectionary, which contains the texts of the First Reading, Responsorial Psalm, and Second Reading for the Mass. This distinction underscores the special honor given to the Gospels as the words of Christ, setting them apart from other scriptural texts.

**Les Rangel-Santos**  
Director of Worship: Liturgy & Music  
[les.rangelsantos@stlm.org](mailto:les.rangelsantos@stlm.org)



## SLM GIFT SHOP SUMMER HOURS

Sun | 8:30 AM - 1:00 PM  
Mon - Sat | Closed

*Summer Hours Thru August 31*

310-540-0329 x249 | giftshop@stlm.org

## VOTIVE CANDLES

Candles are available at the Pastoral Center or in the Gift Shop. Candles are \$5.00 ea. and stay lit for five days.

## NO DONUTS THIS WEEK

We look forward to sharing Coffee & Donuts with you in the Fall.

## SOBER, NOT SOMBER

**Meeting of Alcoholics Anonymous**  
**Sundays | 10:15 AM**  
**Pastoral Center (Office)**

The meetings are mixed, closed, with handicapped access.

More Info | 310-540-0329 x 545  
LA Central Office | 323-936-4343

**DON'T DRINK - CALL FIRST**

## BAPTISM MINISTRY

Each baby baptized at SLM receives a free handmade quilt crafted by a lovely parishioner, or a blanket crocheted by our Knitting Ministry.

If you want to support this ministry, you may drop off a monetary donation at the Pastoral Center. Please indicate **Baptism Ministry**.

Interested in  
volunteering?  
Looking for  
support?



## CAREGIVERS SUPPORT

Sun, Aug 24, 10:30 am | Pastoral Center  
Gathering of people who are directly or indirectly affected by care giving of others.  
310-540-0329 x 540

## MICHELANGELO MINISTRY

Mon, Aug 25, 10:00 am | Parish Hall  
Explore the artist within you & be part of a community who love the creative process.  
310-540-0329 x 540

## RESPECT LIFE ROSARY

Mon, Aug 25, 7:00 pm | In the Church  
Dedicated to bringing the message of life to the parish & the world.  
310-678-2583 | DaleSheckler@gmail.com

## NAMI FAMILY SUPPORT

Wed, Aug 27, 7:00 pm | Parish Hall  
Family Support Group for those with loved ones suffering from mental illness.  
310-792-0244

## YOUNG ADULT SOCIAL

Sat, Aug 30, 12:00 pm | At the beach  
Young Adult fellowship and formation guided by Fr. Charles.  
310-540-0329

## SPIRITUAL BOOK CLUB

Wed, Sep 3, 10:00 am | Pastoral Center  
Small Community of Faith who love reading & discussing books.  
310-415-0876

## CATECHISM & COFFEE

Thu, Sep 4, 9:00 am | Parish Hall  
Discussion of the Catechism of the Catholic Church guided by Fr. Charles.  
310-540-0329

## LGBT+ (ONE HEART) MINISTRY

Tue, Sep 9, 7:00 pm | Pastoral Center  
Ministry open to members of the LGBT+ Community, family, friends & allies.  
Don.Burt@stlm.org

## ONE IN CHRIST MINISTRY

Wed, Sep 10, 7:00 pm | Pastoral Center  
A ministry for racial healing and cultural celebration. Come pray with us.  
310-540-0329 x 276

## PADDLE N PRAISE

Sat, Sep 13 | Lower Courts  
All adults 18 and over invited to fun, faith and fellowship through Pickleball.  
424-408-9738

## GRIEF SUPPORT GROUP

Sun, Sep 14, 10:30 am | Pastoral Center  
Group meeting for those mourning the loss of a loved one.  
310-540-0329 x 540

## READING ROUNDUP

Mon, Sep 15, 10:00 am | Parish Hall  
Silently read your own book and then discuss your book, and why you like it!  
310-540-0329 x 540

## SINGALONG JAM NIGHTS

Mon, Sep 15, 7:00 pm | Parish Hall  
Bring instruments and/or the desire to sing along to well-loved songs in a group setting.  
RauLisaV@gmail.com

## ST. KATERI CIRCLE

Fri, Sep 19, 6:00 pm | Call for location  
A Native American prayer group devoted to St. Kateri Tekakwitha.  
310-901-2432

## WOMEN IN TRANSITION

Sun, Sep 21, 10:30 am | Pastoral Center  
A group of women supporting each other through life's many transitions.  
310-540-0329 x 540

## F.A.I.T.H. MINISTRY

Thu, Nov 20, 7:00 pm | Parish Hall  
Supports the victims of human trafficking in the South Bay and Los Angeles County.  
310-540-0329 x 380

## CHRISTIAN FAMILY MOVEMENT

TBD  
Small groups discuss topics through the lens of faith and provide support for each other.  
310-722-0176

## ADDITIONAL CONTACTS

### Stephen Ministry Message Line

Christian friend to listen, pray and support you in difficult times.  
(Confidential) 310-540-0329 x375

### Saturday Street Ministry

Provide food & clothing to homeless in LA.  
310-540-0329 x276

### Open Arms Ministry

Friendly visits to home bound parishioners.  
310-540-0329 x 540



## Caregivers, Take Time To Care For Yourself

An informal gathering of people whose lives are directly or indirectly affected by their caregiving of parents, children, spouses, or anyone whose lives are directly or indirectly affected by their caregiving. Our group is a safe place where feelings about God, spirituality, and struggles are shared; where issues of isolation and loneliness are addressed; where, as a group, individuals find the courage and strength to continue on; where caregivers teach each other ways to strengthen their relationship with God and with our community.

Fourth Sunday of the month @ 10:30 AM in the Parish Center.

## MICHELANGELO MINISTRY

*"Art enables us to find ourselves and lose ourselves at the same time"* - Thomas Merton  
We invite you to .explore the artist within you, to learn to hear the Holy Spirit guiding you towards your creativity. Don't be shy! This is a ministry where the slogan "No experience necessary" holds true and is a socially supportive and safe space to explore, create, and grow. We will learn and laugh and be joyful together through art. And if you just want to show up and paint rocks, this is the place for you! Rocks and paint will always be on hand.

2<sup>nd</sup> & 4<sup>th</sup> Monday each month | 10:00 a.m. - 12:00 noon | Parish Hall - upstairs

## RESPECT LIFE MINISTRY

invites you to participate in a

Rosary for Life

4<sup>th</sup> Monday of each month, 7 pm  
in the church

310-678-2583

dalesheckler@gmail.com



Family  
Support Group

You are NOT alone

National Alliance on Mental Illness

Mental illness affects *everyone* directly or indirectly through family, friends or coworkers. Join us in a safe, confidential environment to share your experiences and learn from others. We are a **FAMILY Support Group for those with loved ones suffering from mental illness**. (Please note that this group is for loved ones, not for those with Mental Illness).  
Fourth Wednesday of the month @ 7:00 PM.

Kim Sheckler or Tracy Ayotte | familytofamilystlm@gmail.com | 310-792-0244

STLM YOUNG ADULTS PRESENTS

Join us for food, games and fellowship  
with young adults from South Bay  
parishes

1-5 pm - Beach,  
Avenue I, Redondo Beach

5-7 pm BBQ @ STLM



## SPIRITUAL BOOK CLUB

All are welcome to join this Small Community of Faith.  
Our new book is **Imagine You Walked with Jesus: A Guide to Ignatian Contemplative Prayer** by Jerry Windley-Daoust .  
Call for more information, or just show up.

1st and 3rd Wed of each month | 10:00am | Pastoral Center  
Jeanine Gallagher | 310-415-0876

## SLM SCHOOL SCRIP

Tue & Thu | 8:00 AM - 2:45 PM  
310-316-3049

Available from the Parish Office  
outside of regular Scrip office hours.

## PRAYER SHAWLS

Shawls and blankets available to give to anyone who needs an uplift. The shawls and blankets are free of charge and available in the Pastoral Center.

## F.A.I.T.H. MINISTRY

The F.A.I.T.H. (Freedom & Intervention for the Trafficking of Humans) Ministry supports the victims of human trafficking in the South Bay and in Los Angeles County.

*We are collecting toiletry items for victims of human trafficking. The items can be dropped off at the Pastoral Center during normal business hours.*

faith.ministry@stlm.org  
310-540-0329 x 380

## FOOD PANTRY

Saturday | 8 AM - 10 AM

1st Sunday | 8 AM - 11 AM

We **prepare bags of groceries** for individual families and **sack lunches** given to the homeless. For a list of preferred donations please visit **www.stlm.org/giving-back**.

**Monetary donations** may be given online through Elexio Giving, mailed or dropped in the Pastoral Center mail slot. Please indicate **Food Pantry**.

*Thank you for your ongoing generosity as we continue to serve those in need.*

310-540-0329 x 276



Keep in touch with us  
via email & text  
Text **STLM** to **84576**



### SAFEGUARD THE CHILDREN: WHAT HAVING A "HEALTHY CAUTION" TOWARD ADULTS CAN MEAN, PART 1

Having a "healthy caution" about adults in your life does not mean treating all adults as potential perpetrators. It is important to increase awareness about the dangers and the signs of abuse without creating paranoia. Safe adults should not be vigilante protectors, but should have a perspective of caution and should not ignore warning signs of inappropriate behavior. To learn more, read the VIRTUS® article "Why Should We Have a 'Healthy Caution' Toward Adults" at [lacatholics.org/did-you-know](http://lacatholics.org/did-you-know).



**One Mother,  
Many Peoples**

*Mass in Honor of  
Our Lady of the Angels*

**September 6**  
10:30 am - Rosary  
11:00 am - Mass

*At the Cathedral of  
Our Lady of the Angels*

*Faith*  
Trusting in the God  
who waits for you

**SLM MEN'S  
SILENT RETREAT  
September 12-14**

Mater Dolorosa  
Passionist  
Retreat Center  
Sierra Madre, CA

Lee Barden | 310-940-8200  
Kevin Paul | 323-855-3930







*Faith*  
Trusting In The God  
Who Waits For You

Women's Silent  
Retreat  
October 3-5

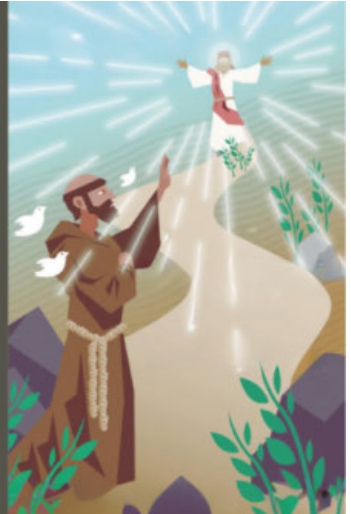

Mater Dolorosa  
Passionist  
Retreat Center  
Sierra Madre, CA

San Pedro Regional  
Congress 2025


Jesus Make Us  
Instruments of Hope

Saturday, October 4

St. Joseph's High School  
Lakewood California


**The Gifts of the  
Blessed Virgin Mary  
in Our Lives**



October 7<sup>th</sup>, 8 am - 2 pm  
Nativity Church Annex  
Donation: \$35 per person  
Register by Sept 29<sup>th</sup>

Speaker  
**ANN O' DONNELL**  
Fr Kolbe Missionary of the Immaculata (FKM)

**San Pedro Council of Catholic Women**  
In collaboration with  
The Catholic Daughters of the Americas Court St Catherine #1378



SLM WOMEN'S CORNERSTONE  
St. Lawrence Martyr Church

**Women's Cornerstone  
Retreat**

February 6-7, 2026






# MARINERS MOIN EVENT *Presents*



**HOMECOMING DANCE**  
**SATURDAY, SEPTMEBER 27TH, 2025**  
**7 TO 11 PM**

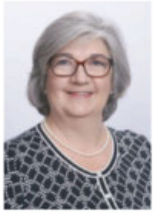
**LIGHT SNACKS, PUNCH\*, DRINKS**  
**LIVE AUCTION, DANCING, FUN**



**TICKETS ON SALE AUG. 29TH**

## Generational Estate Planning for Catholic Families.

Preserving assets,  
promoting faith across generations



Founding Attorney:

**Angela Klenk**

Parishioner and Alumna of UCLA,  
Notre Dame & Bishop Montgomery High School

Certified Specialist in  
Estate Planning,  
Trust & Probate Law

by the State Bar of California Board of Legal Specialization

**BEACH CITIES®**  
ESTATE LAW

424.400.6435

info@beachcitiesestatelaw.com

**Casa Blanca Builders**  
Residential • New Construction  
Remodeling  
Since 1990

**Saul Macias** (310) 266-2597  
General Contractor Lic. 878015



A family-run deli offering a wide range of breakfast burritos, sandwiches, salads, fresh poke, Sicilian-style pizzas and catering services. Monday through Saturdays: 10am to 6pm Closed Sunday  
1908 S. Pacific Coast Hwy., Redondo Beach  
310-316-1908 • rierasplace.com • IG: @rierasplace

**VILLA SORRENTO**  
23450 Madison St  
Torrance, CA  
(310) 539-6826  
villasorrentoassistedliving.com

**SHORT STAFFED?**  
Place an ad here to find new  
local talent for your business.



CALL 800-950-9952

**NAZARETH HOUSE**

ASSISTED LIVING COMMUNITY

For information and to schedule a tour contact:  
**Josephine Wazir - EXECUTIVE DIRECTOR**  
JWazir@nazarethhouse.org | 310-839-2361  
3333 Manning Ave, Los Angeles, CA 90064

New Dining Room | Daily Mass | Beautiful Gardens

RCFE  
#191600600

Where LA Catholics Go to Stay Connected.



**ANGELUS**

Subscribe today for just \$30.00 **\$19.95**

Two easy ways to order: [AngelusNews.com/Bulletin](http://AngelusNews.com/Bulletin) | 844-245-6630

America's Choice in Home Care®  
**Visiting Angels®**  
LIVING ASSISTANCE SERVICES

Experienced local senior care  
for total peace of mind.

424.772.6604

VisitingAngels.com/Torrance

Each Visiting Angels agency is independently owned and operated. License #194700020  
\*2023 Visiting Angels is a registered trademark of Living Assistance Services, Inc.



**THE MORTUARY**  
AT GREEN HILLS



Scan the QR code to begin  
advance planning today.

310-831-0311 [greenhillsLA.com](http://greenhillsLA.com)

Advance funeral planning is a gift, an act of love that grants your family and loved ones peace of mind after you've gone.

When you partner with us, we will organize your information, document your wishes, and ease the process for the ones you love most.

**CENTURY 21**  
FINE HOMES  
& ESTATES.  
Union Realty Co.



**Jennette Toderick, Broker/CEO, Parishioner**  
(310) 418-6318 • [www.c21union.com](http://www.c21union.com)

A portion of commission donated back to the school upon closing in your name

**corner bakery**  
**FREE COFFEE**  
with any Breakfast Entree Purchase

**JOIN US AROUND THE CORNER!**  
Monday - Sunday 6am - 9pm  
1888 S Pacific Coast Hwy  
Redondo Beach, CA 90277  
OFFER: 4080 EXPIRES: 7/30/25

"Empower special needs students at  
our school on my property in Cogua, Colombia."



Thank you for your Donation to Fundación Soles Marianos for  
Students with Special Needs in Colombia  
Questions: Contact Herman Villoria, [hermanv58@yahoo.com](mailto:hermanv58@yahoo.com)



TWO TORRANCE RESTAURANTS, ONE STREET, ONE LOVE!  
**NOW OPEN**  
**NORTH TORRANCE**  
18120 Hawthorne Blvd  
SUN-THU 9AM-1AM | FRI-SAT 9AM-2AM

ORDER  
NOW!



**IF YOU LIVE ALONE**

**MDMedAlert!**  
✓ Ambulance ✓ Police/Fire  
✓ Family/Friends ✓ GPS & Fall Alert  
CALL NOW! 800.809.3570

STARTING AT  
**\$19.95**  
/mo.

[md-medalert.com](http://md-medalert.com)



**CATHOLIC**  
**CEMETERIES**  
& **MORTUARIES**

EVERLASTING FAITH. EVERLASTING LIFE.

A ministry of the Church  
serving the faithful.

Learn about our 11 locations in  
Los Angeles, Ventura and  
Santa Barbara counties

(213) 637-7801 [CatholicCM.org](http://CatholicCM.org)



For ad info. call 1-800-950-9952 • [www.4lpi.com](http://www.4lpi.com)

St. Lawrence Martyr Church, Redondo Beach, CA

C 4C 05-4027



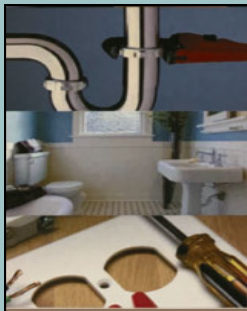


TRADITIONAL FUNERALS  
CREMATION | PRE-PLANNING

Rice Center  
Torrance FD 1113

White & Day Center  
Redondo Beach FD 825

310-792-7599 LAFuneral.com



Your **ONE** stop shop for all your repair and improvement needs;  
from complete facelifts to the smallest fix.

- Interior/Exterior Paint • Popcorn Removal • Finish Carpentry • Landscape
- Re-texturing • Cabinet Repair/Replacement • Fencing
- Flooring • Electrical • Power Washing
- Re-glazing • Drywall • Patio and Deck Repair
- Plumbing • Re-screening

CSLB. #1065288 • Matthew Quinn • 310-808-3717  
matt@heckofadeal.net • www.heckofadeal.net

**LICENSED & INSURED**

**ADT-Monitored Home Security**  
Get 24-Hour Protection From a Name You Can Trust

- Burglary • Flood Detection
- Fire Safety • Carbon Monoxide

833-287-3502



**CALIFORNIA AIR**  
Commercial and Residential  
Heating and Air Conditioning

**Heating And Air  
Conditioning  
Residential  
Repair  
Service**



Call us Today To Book Now  
**310-530-0504**  
www.californiaaac.com

**SOUTH BAY  
EQUITY LENDING**

Refinance  
Purchase  
Reverse Mortgages

Matthew Hadnett 310-378-8212  
Mortgage Loan Broker - Active Parishioner  
Cal-BRE #1319592 - NMLS #313412

**3 FREE  
Music  
Lessons**  
**310-749-7099**  
All Instruments!  
SunsetLearningStudio.com  
1 free trial-2 more free w/1st 10-pack

**Reliable  
Caregivers**  
**(310) 218 8609**

clearing Sunday  
mornings for you.

Medication Management  
at The Canterbury

Gain more you time.  
thecanbury.org | (310) 984-1154

An ECS senior living community. Proudly nonprofit.  
5801 Crestridge Rd. Rancho Palos Verdes, CA 90275  
ROPE 191-603774, CDA, 257

the canterbury  
The Art of Nobility



**SAL CORREA**  
ADVANCE PLANNING ADVISOR  
Hablo Español  
Cell (310) 987-1104

E-Mail SCorrea@GreenHillsLA.com  
PRE-PLANNING IS AN ACT OF LOVE, A GENEROUS GIFT  
TO YOUR FAMILY AND FRIENDS, ALLOWING THEM TO  
MOURN AND GRIEVE PEACEFULLY.

I HAVE ASSISTED HUNDREDS OF FAMILIES PLAN  
THEIR LIFE CELEBRATION IN ADVANCE. I CAN MAKE THE  
UNCOMFORTABLE PROCESS EASIER FOR YOU.

LIC. 0M61169

**Peter Wollner • Real Estate Broker**  
Residential • Commercial  
Sales • Leasing • Management  
Lifelong Parishioner/SLM Alumni

NHL Brokers  
310-259-6698 DRE#01381742

**DOES YOUR NONPROFIT  
ORGANIZATION NEED  
A NEWSLETTER?**

Engaging, ad-supported  
print and digital newsletters  
to reach your community.

Visit [lpicommunities.com](http://lpicommunities.com)



**SHORT STAFFED?**

Place an ad here to find new  
local talent for your business.



**CALL 800-477-4574**



Lic 957812

Free Camera Inspection  
With Sewer Cleaning  
MUST HAVE  
Proper Clean Out  
**\$129**

[primetimeplumbing.net](http://primetimeplumbing.net)  
310-984-0377

Drain Cleaning  
**\$99**

**\$75 OFF**  
ANY Plumbing Repair  
of \$300 or More



FLOOR COVERINGS  
International  
**One team. The whole project.**  
The Stars of Flooring<sup>SM</sup>

310-974-1141 | [fcisouthbay.com](http://fcisouthbay.com)  
BOOK A FREE FLOORING CONSULTATION TODAY!



**INDOOR VOLLEYBALL SUMMER CAMPS & HIGH PERFORMANCE CLINICS**

FULL WEEK CAMPS  
**6/30 - 8/15**  
DAILY SESSION TIMES:  
9-11 AM • NOON - 2 PM • 3-5 PM

FOR BOYS & GIRLS • 8-18 YEARS OLD  
ALL LEVELS: BEGINNER  
INTERMEDIATE • ADVANCED

LOCATION: LA GALAXY VOLLEYBALL COURTS  
540 MAPLE AVE., TORRANCE 90503

FULL WEEK CAMPS HIGH  
PERFORMANCE CLINICS  
**7/7 - 8/15**  
DAILY SESSION TIMES:  
NOON - 2 PM • 3-5 PM • 6-8 PM

FOR BOYS & GIRLS • 12+ YEARS OLD  
INTERMEDIATE: CLUB TEAM  
EXPERIENCE REQUIRED  
ADVANCED: HIGH SCHOOL PLAYERS

WEEKLY SESSION RATES: 1 SESSION - \$240  
2 SESSIONS - \$395 • 3 SESSIONS - \$550



For ad info. call 1-800-950-9952 • [www.4lpi.com](http://www.4lpi.com)

St. Lawrence Martyr Church, Redondo Beach, CA

B 4C 05-4027





## Tara McGuinness

Attorney, Collaborator & Mediator

Family Law, Trusts & Estates

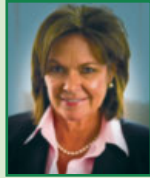
3424 W. Carson Street

Suite 570, Torrance

**310.793.0800**

[www.taramcguinness.com](http://www.taramcguinness.com)

Serving South Bay For More Than 43 Years



## kingdom outdoor living

DESIGN • BUILD • SOLAR



Located here in south  
Redondo Beach

**"We, ALSO, help you  
connect to a higher power!"**

Outdoor design/build  
Residential/Commercial SOLAR

License #1063267

Please call for a  
shining free consult!

**310-421-0014  
KOLsocial.com**

## Vince DeLuca

REALTOR – Broker

Active Parishioner

**310-356-4232**

ESTATE PROPERTIES

## SENIOR CARE

Thrive in Your Own Home



A Peaceful Way  
HOME CARE

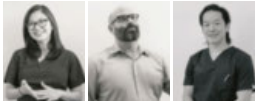
[apeacefulwayhomecare.com](http://apeacefulwayhomecare.com)

- Compassionate
- Trustworthy
- Reliable
- Family owned & operated
- Licensed/Bonded/Insured

**310-377-3776**

Terry McGovern/Parishioner

## GOOD DERMATOLOGY



Consuelo  
David  
MD, MSC

Noah  
Craft  
MD, PhD

Young  
Kwak  
MD

(310) 405-0693

[www.goodderms.com](http://www.goodderms.com)

3640 Lomita Blvd Ste 301 • Torrance

## GUITAR LESSONS!

SLM Guitar Instructor,  
**Joe DiResta** offers in-home, private  
guitar and bass lessons. Joe is a USC  
music grad & has over **17 years** of  
teaching & performing experience.

Call today to schedule your **FREE LESSON!**

**310.408.4142**



## SHORT STAFFED?

Place an ad here to find new  
local talent for your business.



**CALL 800-477-4574**

## Perry Klokkevold, DDS, MS, FACD

Board Certified Periodontist & Implant Surgeon

**COMPASSIONATE, HIGH QUALITY  
CARE, CUTTING-EDGE TECHNOLOGY  
AND MINIMALLY INVASIVE TECHNIQUES  
ENSURE PRECISION AND COMFORT.**

Dental Implants | Bone Grafts

Ridge Augmentation

Periodontal Disease

Guided Tissue Regeneration

Gum Grafts

Esthetic Procedures



23430 Hawthorne Blvd, Suite #345 Torrance, CA 90505

**310.325.9969 - [www.permadent.com](http://www.permadent.com)**



## Suzy Zimmerman

AGENT

Lic. #  
0F71296



**Bus 310.377.9531**

Fax 310.377.0954

[www.ZimZimInsurance.com](http://www.ZimZimInsurance.com)

[suzy@zimziminsurance.com](mailto:suzy@zimziminsurance.com)



SUPPORT  
OUR PARISH



BICHLMEIER  
INSURANCE  
SERVICES, INC.

**Auto, Home, Business,  
Life Insurance & more**

Carriers: Mercury, Liberty Mutual,  
Travelers, Progressive & more



**Phone: 310-376-8852 • Website: [www.bisins.com](http://www.bisins.com)**



**CHERISH  
HOSPICE**

*Quality of Health is our Commitment to you!*

2340 Plaza Del Arno Ste 230 • Torrance, CA 90501

**(310) 320-1677**

**[www.cherishhospice.com](http://www.cherishhospice.com)**



Water Damage Restoration • Sewage  
Backup and Cleanup • Mold Removal  
Fire and Smoke Damage • Disaster Restoration  
Commercial Property Damage

**Mention this ad for 10% discount**

**310-600-3780 • [911restorationsouthbayla.com](http://911restorationsouthbayla.com)**



SUPPORT OUR  
ADVERTISERS!

## catholicmatch®

California



[CatholicMatch.com/CA](http://CatholicMatch.com/CA)



**LET'S GROW  
YOUR BUSINESS**

Place Your Ad Here  
and Support Our Parish!

**CONTACT ME  
Mike McAleer**

**[MMcAleer@4LPi.com](mailto:MMcAleer@4LPi.com)**

**(800) 477-4574 x6307**

## MEMORY, COFFEE & COMPASSION SUPPORT GROUP

for Family Caregivers of  
DEMENTIA, ALZHEIMER'S  
& PARKINSON'S Loved Ones

Meets 2nd & 4th Wednesday every month • 10:00-11:00am  
ROLLING HILLS METHODIST CHURCH • 26438 CRENSHAW BLVD.

## • STATE-OF-THE-ART MEMORY CARE HOMES •

TORRANCE • PALOS VERDES

SOLVANG • SANTA YNEZ VALLEY

*Schedule a  
Tour Today!*



Visit us online at:  
[WWW.FAMILYCONNECTMEMORYCARE.COM](http://WWW.FAMILYCONNECTMEMORYCARE.COM)



FOR MORE INFORMATION, CALL  
**310-383-1877**

**Lauren  
Mahakian**

Certified Dementia Practitioner  
Certified Memory Care  
Specialist/Trainer  
MEd #17470143



For ad info. call 1-800-950-9952 • [www.4LPi.com](http://www.4LPi.com)

St. Lawrence Martyr Church, Redondo Beach, CA

A 4C 05-4027