

ST. LAWRENCE MARTYR CATHOLIC COMMUNITY

SEP 7, 2025 | 23RD SUNDAY IN ORDINARY TIME



SIT DOWN AND CALCULATE **THE COST.**

— LUKE 14:28 —

TWENTY-THIRD SUNDAY IN ORDINARY TIME

CLPI

Rev. Msgr. Paul Dotson, Pastor

Rev. Charles Balamaze, Associate Pastor | Rev. Msgr. Peter O'Reilly, In Residence
Deacon Don Burt | Deacon Jim Egnatuk | Deacon Dale Sheckler

WEEKEND MASSES

Saturday 4:00 PM (Sunday Liturgy)
Sunday 7:00 AM, 9:00 AM,
11:30 AM, 5:00 PM

DAILY MASSES

Monday - Saturday 8:10 AM
Tuesday & Thursday 12:00 PM

ADORATION CHAPEL

Sunday 7:00 AM - 6:00 PM
Monday & Friday 7:00 AM - 3:30 PM
Saturday 8:00 AM - 5:00 PM

SACRAMENT OF RECONCILIATION

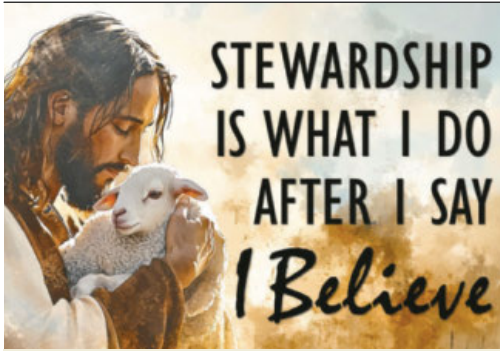
Saturday 11:00 AM - 12:00 PM

TELEPHONE NUMBERS

Pastoral Center	310-540-0329
Office for Worship	310-316-0090
Office of Religious Education	310-316-4460
O.C.I.A. for Adults	310-316-0961
St. Lawrence Martyr School	310-316-3049
Youth Ministry/Confirmation	310-316-0466
Funerals	310-540-0329 x274
St. Lawrence Martyr Gift Shop	310-540-0329 x249

To become a member of our community of faith, please stop by or call the
Pastoral Center at 310-540-0329 or register online: <https://www.stlm.org/im-new>

1940 South Prospect Avenue • Redondo Beach • California 90277 • 310-540-0329 • www.stlm.org



GIVING TO ST. LAWRENCE MARTYR IS EASY WITH ELEXIO

Forgot your envelope? Are you visiting us today and want to make a ONE TIME GIFT? Want to give to a special collection? Follow these easy and secure steps to Text-to-Give:

- Text **GIVE** to **424-414-STLM**.
- Follow the text instructions to complete your donation.
- Save the number as a contact in your phone to make future giving faster and easier.

You may also give by scanning this QR Code with the camera app on your cellphone or visit **STLM.ORG/GIVING**



We thank you for your generosity and support of our St. Lawrence Martyr Catholic Community.

PASTORAL CENTER HOURS SEPTEMBER 7 - SEPTEMBER 15

Sun	9/7	08:00 am - 1:00 pm
Mon	9/8	08:30 am - 12:30 pm 01:30 pm - 04:00 pm
Tue	9/9	08:30 am - 12:30 pm 01:30 pm - 04:00 pm
Wed	9/10	08:30 am - 12:30 pm 01:30 pm - 04:00 pm
Thu	9/11	08:30 am - 12:30 pm 01:30 pm - 04:00 pm
Fri	9/12	08:30 am - 12:30 pm 01:30 pm - 04:00 pm
Sat	9/13	Closed
Sun	9/14	08:00 am - 1:00 pm
Mon	9/15	08:30 am - 12:30 pm 01:30 pm - 04:00 pm

PRAYER FOR EVERYDAY

Dear God, In my desire for You, take away anything that keeps me from knowing You, myself, or my mission here on earth. Help me to remember what is truly important, and to seek and treasure that. Amen. ©LPI



God of love, We thank you for our wonderful grandparents. They bring such joy and happiness into our lives. Thank you for all the special times that we have with them. Please watch over them, protect them and care for them now. May they know your goodness and love always. Amen.

Adult Confirmation Registration Open

Are you a baptized Catholic who has not yet received the Sacrament of Confirmation? We invite you to join our upcoming Adult Confirmation preparation classes! This is a wonderful opportunity to deepen your faith and complete your initiation into the Church. We meet at 7:00 pm in the Chapel on the 2nd Thursday of each month. Sessions begin September 11. Register today!



Eat Healthy & Support Our School

Join the Tanaka Farms Community Supported Agriculture (CSA) program and enjoy fresh, local produce delivered every other week. A portion of the proceeds supports St. Lawrence Martyr School—helping our students while you eat healthy. Sign up today and make a difference with every box!





GIFTS of the HEART

2025



TOGETHER IN
MISSION

Our Goal: \$170,880

OPEN CAMERA
SCAN QR CODE
GIVE TODAY!



PRAYER REQUESTS

We pray for all those suffering illness and in need of healing and comfort.

Dale Ziegler	Lisa Ziegler	Margie Morsches
Carol Campbell	Anne Lafranchi	Les Rangel-Santos
Monica Rangel-Santos	Gayle Meyer	Jo Margolf
Dorian Campbell	John Cardinali	Grace Catena
Laetitia Edge	Parsa Jahromi	Laura Martz
Hillary Torres	Tamara Fick	Virginia Rose
Eduardo Cervantes	Cathy Doyle	

THE FAITHFUL DEPARTED

May all the souls of the recently departed, through the mercy of Christ, rest in peace.

Jonathan Rawitz	Suzanne Quigley Carbajal	Hector Ramirez
	Angie Carlton	

Eternal Rest Grant Unto Them, O Lord.

SUNDAY READINGS

First Reading: And thus were the paths of those on earth made straight. (Wisdom 9:18)

Psalm: In every age, O Lord, you have been our refuge. (Psalm 90)

Second Reading: Perhaps this is why he was away from you for a while, that you might have him back forever. (Philemon 1:15)

Gospel: Whoever does not carry his own cross and come after me cannot be my disciple. (Luke 14:27)

Excerpts from the Lectionary for Mass ©2001, 1998, 1970 CCD.
The English translation of Psalm Responses from Lectionary for Mass © 1969, 1981, 1997,
International Commission on English in the Liturgy Corporation. All rights reserved. ©LPi

WEEKLY READINGS

Sunday:	Wisdom 9:13-18b, Philemon 9-10, 12-17, Luke 14:25-3
Monday:	Micah 5:1-4a or Romans 8:28-30, Matthew 1:18-23
Tuesday:	Colossians 2:6-15, Luke 6:12-19
Wednesday:	Colossians 3:1-11, Luke 6:20-26
Thursday:	Colossians 3:12-17, Luke 6:27-38
Friday:	1 Timothy 1:1-2, 12-14, Luke 6:39-42
Saturday:	1 Timothy 1:15-17, Luke 6:43-49
Next Sunday:	Numbers 21:4b-9, Philemon 2:6-11, John 3:13-17



SUNDAY, SEPTEMBER 7

7:00 am | Leandro Macias †
9:00 am | Delphine Marlow †
11:30 am | Aileen Willson †

MONDAY, SEPTEMBER 8

8:10 am | Tim Collins †

TUESDAY, SEPTEMBER 9

8:10 am | Msgr. Paul Dotson
12:00 pm | Ken Cottrell Family

WEDNESDAY, SEPTEMBER 10

8:10 am | Tom Dotson †

THURSDAY, SEPTEMBER 11

8:10 am | Debbie Edmonds
12:00 pm | Jeannette & Larry Jamison

FRIDAY, SEPTEMBER 12

8:10 am | Fr. Maurice Henry


SATURDAY, SEPTEMBER 13

8:10 am | Jerry Farrell †
4:00 pm | Dale Bowman †

SUNDAY, SEPTEMBER 14

7:00 am | Alvaro & Gisela Fernandez †
9:00 am | Terry Lines †
11:30 am | Alfonso Colonje †
5:00 pm | Annunciation Church
(† Deceased)

Parishioners are invited to offer Mass intentions for loved ones, living or deceased. A donation of \$20 is suggested. You may also add your loved one to the Book of Intentions in the church by Mary. Your offering supports our parish and the spiritual work of the Church. Thank you for



PRAYER

O.C.I.A. in Pastoral Center

Wednesday, September 10, 7:00 pm

ALL ARE WELCOME!



GOSPEL MEDITATION by FR. JOHN MUIR

One hot Arizona summer afternoon my car ran out of gas. I phoned the parish office and begged for help. My secretary came and helped me fill the gas tank. She chided me, "If you can't manage getting your car from A to B, how can we expect you to guide the parish where it needs to go?" Point taken, Julie. I vowed to always make sure I have plenty of gas in my car.

The Lord Jesus chides us in this week's Gospel, too. He uses the two images of a man building a tower and a king marching soldiers into war to make this single point: acquire what is needed to follow him or look ridiculous. We rightly mock the builder who lacks money for his tower and the king with a short-handed army. But our mocking boomerangs back on us. How do we expect to follow Jesus to the end with insufficient detachment from our possessions and divided hearts?

The good news is, there is still time. Jesus is building a great tower to heaven—his own body. So we renounce all and give ourselves to him as his precious stones. Jesus is waging a battle against our enemy. So we forsake all and swear allegiance and march under his banner. In this way, we will finish what has begun in our discipleship. Or better put, our Lord will have the stones and soldiers required to see his great work through. ©LPI

(PRACTICING) CATHOLIC RECOGNIZE GOD IN YOUR ORDINARY MOMENTS

Mini Reflection: For someone who talks about love so much, it seems weird that in today's Gospel Jesus is calling us to hatred. It makes us question everything we think we understand about him, about God, about discipleship.

How to Hate the Christian Way

When I was a kid, we had the Dumb Stupid Hate Chair.

It was a chair in my parents' foyer where an offending child had to sit for five or ten minutes if they uttered the words "dumb," "stupid" or "hate." The rules in my house growing up were very clear. We don't call anyone stupid. We don't call anyone dumb. And we hate no one and nothing.

Well, today, Jesus has to sit in the Dumb Stupid Hate Chair.

For someone who talks about love so much — for whom love is a legacy and a commandment — it seems weird that in today's Gospel Jesus is calling us to hatred. It makes us question everything we think we understand about him, about God, about discipleship.

I'll let you guess which of the kids in my family spent the most time in the Dumb Stupid Hate Chair (Hi! It was me). But I didn't really think my sister was stupid, and I didn't really hate my brother. Those were just the words I used, even though they were strictly forbidden — maybe because they were strictly forbidden. They were the strongest words I knew, and you need strong words for strong feelings.

Jesus knew that hate is a really strong word. It's a word that gets people's attention. And I think what he wants to do today, more than anything, is get our attention. He wants to force us to consider the ways in which our attachments to this world — and even to other people — supersede our attachment to God. He wants us to radically evaluate what (and who) we love and how we love it and how much of our souls, our lives, ourselves we have let this love consume.

It's a tough assignment, and we don't like it. Maybe we kind of hate it. That's okay: hate has its place. So take a seat in the chair and give it a ponder.

- Colleen Jurkiewicz Dorman . ©LPI

ON THE DEATH OF A LOVED-ONE

Starting July 1, 2025, families experiencing the loss of a loved one may call 310-540-0329 x274 at any time to begin funeral arrangements at St. Lawrence Martyr. This dedicated line is monitored three times a day, and a minister will return your call within 24 hours.

QUESTIONS OF THE WEEK

REFLECT AND RESPOND TO SCRIPTURE

1st Reading: The author of Wisdom teaches us that our limited understanding can be overcome by the gift of wisdom from God's Holy Spirit. Have you ever prayed for the gift of wisdom in discerning a difficult course of action?

2nd Reading: Paul is asking Philemon to welcome back his runaway slave, Onesimus, as a brother in Christ. Who do you consult when making difficult life decisions?

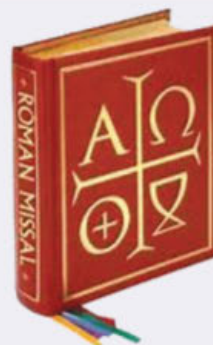
Gospel: Jesus challenges the crowds to weigh carefully the high cost of discipleship. What have you given up following Jesus? ©LPI

LIVE THE LITURGY

Today, Jesus tells us the cost of true discipleship — and it turns out, it's everything. We must reject the world in order to love God. What attachments are holding us back from the relationship we could have — we should have — with our



See You in the *Eucharist*



The Roman Missal

Last week's we talked about the Lectionary, and the previous week we talked about the Book of Gospels. This Sunday, let us look at the Roman Missal. From the US Conference of Catholic Bishops (USCCB): "The Roman Missal is the book containing the prescribed prayers, chants, and instructions for the celebration of Mass in the Roman Catholic Church. Published first in Latin under the title *Missale Romanum*, the text is then translated and, once approved by a recognition by the Vatican Congregation for Divine Worship and the Discipline of the Sacraments, is published in modern languages for use in local churches throughout the world." Basically, this is liturgical book used by the priest at Mass. It is distinct from the Lectionary and Book of Gospels. "The first book bearing the name *Missale Romanum* appeared in 1474, perhaps not coincidentally in the same century as the invention of the printing press by Johannes Gutenberg (1440). But it was not until after the Council of Trent that Pope Pius V, in 1570, promulgated an edition of the *Missale Romanum* that was to be in obligatory use throughout the Latin Church (except in cases where another rite had been in place for at least 200 years). This marked the first official attempt at uniformity in the celebration of the Mass in the history of the Church."

Yes, we have old books: Bible, Lectionary, Book of Gospels, Roman Missal. We are an old Church, the original Church founded by the Lord Jesus Christ himself.

Feel free to interact with me about this topic or any other topic covered in "See You in the Eucharist" about liturgy, liturgical music, or catholic worship. Just send me an email and let's get going!

Les Rangel-Santos
 Director of Worship: Liturgy & Music
les.rangelsantos@stlm.org

SLM GIFT SHOP

Sun | 8:30 AM - 1:00 PM
Tue, Thu, Fri | 10:00 AM - 4:00 PM
Mon, Wed, Sat | Closed

310-540-0329 x249
giftshop@stlm.org

VOTIVE CANDLES

Candles are available at the Pastoral Center or in the Gift Shop. Candles are \$5.00 ea. and stay lit for five days.

NO DONUTS THIS WEEK

We look forward to sharing Coffee & Donuts with you in the Fall.

SOBER, NOT SOMBER

Meeting of Alcoholics Anonymous
Sundays | 10:15 AM
Pastoral Center (Office)

The meetings are mixed, closed, with handicapped access.
More Info | 310-540-0329 x 545
LA Central Office | 323-936-4343

DON'T DRINK - CALL FIRST

BAPTISM MINISTRY

Each baby baptized at SLM receives a free handmade quilt crafted by a lovely parishioner, or a blanket crocheted by our Knitting Ministry.

If you want to support this ministry, you may drop off a monetary donation at the Pastoral Center. Please indicate **Baptism Ministry**.

Interested in
volunteering?
Looking for
support?



MICHELANGELO MINISTRY

Mon, Sep 8, 10:00 am | Parish Hall
Explore the artist within you & be part of a community who love the creative process.
310-540-0329 x 540

YOUNG ADULT MINISTRY

Mon, Sep 8, 7:00 pm | Youth Center
Young Adult fellowship and formation guided by Fr. Charles.
310-540-0329

LGBT+ (ONE HEART) MINISTRY

Tue, Sep 9, 7:00 pm | Pastoral Center
Ministry open to members of the LGBT+ Community, family, friends & allies.
Don.Burt@stlm.org

PADDLE N PRAISE

Sat, Sep 13 | Lower Courts
All adults 18 and over invited to fun, faith and fellowship through Pickleball.
424-408-9738

GRIEF SUPPORT GROUP

Sun, Sep 14, 10:30 am | Pastoral Center
Group meeting for those mourning the loss of a loved one.
310-540-0329 x 540

READING ROUNDUP

Mon, Sep 15, 10:00 am | Parish Hall
Silently read your own book and then discuss your book, and why you like it!
310-540-0329 x 540

SINGALONG JAM NIGHTS

Mon, Sep 15, 7:00 pm | Parish Hall
Bring instruments and/or the desire to sing along to well-loved songs in a group setting.
RauLisaV@gmail.com

SPIRITUAL BOOK CLUB

Wed, Sep 17, 10:00 am | Pastoral Center
Small Community of Faith who love reading & discussing books.
310-415-0876

ONE IN CHRIST MINISTRY

Thu, Sep 18, 7:00 pm | Pastoral Center
A ministry for racial healing and cultural celebration. Come pray with us.
310-540-0329 x 276

ST. KATERI CIRCLE

Fri, Sep 19, 6:00 pm | Call for location
A Native American prayer group devoted to St. Kateri Tekakwitha.
310-901-2432

WOMEN IN TRANSITION

Sun, Sep 21, 10:30 am | Pastoral Center
A group of women supporting each other through life's many transitions.
310-540-0329 x 540

CHRISTIAN FAMILY MOVEMENT

Sun, Sep 21, 4:00 pm | Parish Hall
Small groups discuss topics through the lens of faith and provide support for each other.
310-722-0176

RESPECT LIFE ROSARY

Mon, Sep 22, 7:00 pm | In the Church
Dedicated to bringing the message of life to the parish & the world.
310-678-2583 | DaleSheckler@gmail.com

NAMI FAMILY SUPPORT

Wed, Sept 24, 7:00 pm | Parish Hall
Family Support Group for those with loved ones suffering from mental illness.
310-792-0244

CAREGIVERS SUPPORT

Sun, Sep 28, 10:30 am | Pastoral Center
Gathering of people who are directly or indirectly affected by care giving of others.
310-540-0329 x 540

CATECHISM & COFFEE

Thu, Oct 2, 9:00 am | Parish Hall
Discussion of the Catechism of the Catholic Church guided by Fr. Charles.
310-540-0329

F.A.I.T.H. MINISTRY

Thu, Nov 20, 7:00 pm | Parish Hall
Supports the victims of human trafficking in the South Bay and Los Angeles County.
310-540-0329 x 380

ADDITIONAL CONTACTS

Stephen Ministry Message Line

Christian friend to listen, pray and support you in difficult times.
(Confidential) 310-540-0329 x375

Saturday Street Ministry

Provide food & clothing to homeless in LA.
310-540-0329 x276

Open Arms Ministry

Friendly visits to home bound parishioners.
310-540-0329 x 540

MICHELANGELO MINISTRY

"Art enables us to find ourselves and lose ourselves at the same time" - Thomas Merton
We invite you to explore the artist within you, to learn to hear the Holy Spirit guiding you towards your creativity. Don't be shy! This is a ministry where the slogan "No experience necessary" holds true and is a socially supportive and safe space to explore, create, and grow. We will learn and laugh and be joyful together through art. And if you just want to show up and paint rocks, this is the place for you! Rocks and paint will always be on hand.

2nd & 4th Monday each month | 10:00 a.m. - 12:00 noon | Parish Hall - upstairs

SLM SCHOOL SCRIP

Tue & Thu | 8:00 AM - 2:45 PM
310-316-3049

Available from the Parish Office
outside of regular Scrip office hours.

Young Adult Ministry

Women and men, ages 18 to 30s, all from diverse cultural, vocational, social, and political backgrounds. We come together for spiritual, educational, and social activities and programs. We support each other as we discover new roles in life, family, work, society, and the Catholic Church. Join our family for fellowship and fun.

Father Charles Balamaze | 310-540-0329



PRAYER SHAWLS

Shawls and blankets available to give to anyone who needs an uplift. The shawls and blankets are free of charge and available in the Pastoral Center.

F.A.I.T.H. MINISTRY

The F.A.I.T.H. (Freedom & Intervention for the Trafficking of Humans) Ministry supports the victims of human trafficking in the South Bay and in Los Angeles County.

We are collecting toiletry items for victims of human trafficking. The items can be dropped off at the Pastoral Center during normal business hours.

faith.ministry@stlm.org
310-540-0329 x 380



THE LGBT+ (ONE HEART) MINISTRY

"One Heart" is the LGBT ministry at Saint Lawrence Martyr Church. We are dedicated to the loving acceptance and integration of all persons into our faith community by listening to, understanding, and supporting one another as followers of Jesus.

2nd Tuesday of each month | 7:00 pm | Pastoral Center
Deacon Don | don.burt@stlm.org



Pickleball is in full swing at SLM, and everyone 18 and older is invited to join the fun! No matter your skill level, you're welcome to pick up a paddle and be part of the excitement in the nation's fastest-growing sport. Come enjoy an uplifting time of Fun, Faith, and Fellowship as we paddle and praise together. We can't wait to see you on the court!

2nd & 4th Saturday | 9 AM | LOWER FIELD



The Grief Support Group is for those mourning the loss of a loved one. Our group will help you understand that there is no "expectation" for grieving. Everyone has their own process, their own way, and their own time frame. This is a group meeting where the members develop a connection and hopefully feel comfortable and at ease with each other as we journey together.

2nd Sunday of every month | 10:30 AM | Pastoral Center

GRIEF
SUPPORT
GROUP

READING ROUNDUP

In traditional book groups, people show up having read the book, but there's a lot to be said for sharing the experience of reading together. The Reading Roundup is a silent book group where we read together quietly before we discuss. Bring whatever you are reading. We will read for about an hour and then talk about the book we decided to bring and why we like it. Be prepared for many interesting discussions in our politically free zone!

3rd Monday of the Month 10:00-12:00 | Parish Hall | 310-540-0329 x540



FOOD PANTRY

Saturday | 8 AM - 10 AM
1st Sunday | 8 AM - 11 AM

We prepare bags of groceries for individual families and sack lunches given to the homeless. For a list of preferred donations please visit www.stlm.org/giving-back.

Monetary donations may be given online through Elexio Giving, mailed or dropped in the Pastoral Center mail slot. Please indicate **Food Pantry**.

Thank you for your ongoing generosity
as we continue to serve those in need.
310-540-0329 x 276



Keep in touch with us
via email & text
Text **STLM** to **84576**

SAFEGUARD THE CHILDREN: DOWNLOADING APPS

If your child has a mobile phone or tablet, you should be aware of what apps he or she is downloading and using. There are several apps designed to hide photos and videos, that are protected by security features like passwords, fingerprints or face ID. These apps may not be immediately obvious on a device, as they are designed to be hidden. One tip to avoid hidden content or apps is to set up a shared log-in or account which will allow you to prevent anything from being loaded to your child's phone without your knowledge. For more tips and information, read the VIRTUS® article "Do You Know What's Dwelling On Your Child's Phone?" at iacatholics.org/did-you-know.

FRIDAY MOVIE NIGHT
with Fr. Charles
CABRINI
 September 19, 2025 7:00 PM
 St Lawrence Martyr Parish Hall




Join us for an inspiring movie followed by a lively discussion. Bring your friends.

Continuing the Jubilee Celebration
 at our upcoming
SENIOR LUNCHEON
 Wednesday, September 24th
 12:00 pm in the Hall
 Bring a friend
 Bring your happy faces!

MORINERS MAIN EVENT
Presents
 Homecoming Dance
 September 27, 2025
 7 to 11 pm





The Gifts of the Blessed Virgin Mary in Our Lives



October 7th, 8 am - 2 pm
 Nativity Church Annex
 Donation: \$35 per person
 Register by Sept 29th

Speaker
ANN O'DONNELL
 Fr Kolbe Missionary of the Immaculata (FKM)

San Pedro Council of Catholic Women
 In collaboration with
 The Catholic Daughters of the Americas Court St Catherine #1378

Jubilee Pilgrimage
 with Fr. Charles Balamaze
 San Buenaventura Mission
 October 25, 2025




Women's Cornerstone Retreat
 February 6-7, 2026




CFM KICKOFF EYES ON THE END ZONE

Fix your eyes on the prize
that lasts forever.



9/21/25, 4:00-7:00pm

In the Parish Hall

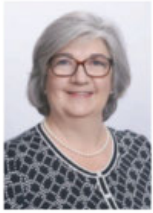
Pizza, veggies, and ice cream sundaes will be served.

Bring a backpack or school supplies to donate
to kids in need

Football attire optional

Generational Estate Planning for Catholic Families.

Preserving assets,
promoting faith across generations



Founding Attorney:

Angela Klenk

Parishioner and Alumna of UCLA,
Notre Dame & Bishop Montgomery High School

Certified Specialist in
Estate Planning,
Trust & Probate Law

by the State Bar of California Board of Legal Specialization



424.400.6435

info@beachcitiesestatelaw.com

Casa Blanca Builders
Residential • New Construction
Remodeling
Since 1990

Saul Macias (310) 266-2597
General Contractor Lic. 878015



A family-run deli offering a wide range of breakfast burritos, sandwiches, salads, fresh poke, Sicilian-style pizzas and catering services. Monday through Saturdays: 10am to 6pm Closed Sunday
1908 S. Pacific Coast Hwy., Redondo Beach
310-316-1908 • rierasplace.com • IG: @rierasplace

VILLA SORRENTO
23450 Madison St
Torrance, CA
(310) 539-6826
villasorrentoassistedliving.com

SHORT STAFFED?

Place an ad here to find new
local talent for your business.



CALL 800-950-9952

NAZARETH HOUSE

ASSISTED LIVING COMMUNITY

For information and to schedule a tour contact:
Josephine Wazir - EXECUTIVE DIRECTOR
JWazir@nazarethhouse.org | 310-839-2361
3333 Manning Ave, Los Angeles, CA 90064

New Dining Room | Daily Mass | Beautiful Gardens

RCFE
#191600600

Where LA Catholics Go to Stay Connected.



ANGELUS

Subscribe today for just \$30.00 **\$19.95**

Two easy ways to order: AngelusNews.com/Bulletin | 844-245-6630

America's Choice in Home Care
Visiting Angels
LIVING ASSISTANCE SERVICES

Experienced local senior care
for total peace of mind.

424.772.6604

VisitingAngels.com/Torrance

Each Visiting Angels agency is independently owned and operated. License #194700020
*2023 Visiting Angels is a registered trademark of Living Assistance Services, Inc.



THE MORTUARY
AT GREEN HILLS



Scan the QR code to begin
advance planning today.

310-831-0311 greenhillsLA.com

Advance funeral planning is a gift, an act of love that grants your family and loved ones peace of mind after you've gone.

When you partner with us, we will organize your information, document your wishes, and ease the process for the ones you love most.

CENTURY 21
FINE HOMES
& ESTATES.
Union Realty Co.



Jennette Toderick, Broker/CEO, Parishioner
(310) 418-6318 • www.c21union.com

A portion of commission donated back to the school upon closing in your name

corner bakery
FREE COFFEE
with any Breakfast Entree Purchase

JOIN US AROUND THE CORNER!
Monday - Sunday 6am - 9pm
1888 S Pacific Coast Hwy
Redondo Beach, CA 90277
OFFER: 4080 EXPIRES: 7/30/25

"Empower special needs students at
our school on my property in Cogua, Colombia."



Thank you for your Donation to Fundación Soles Marianos for
Students with Special Needs in Colombia
Questions: Contact Herman Villoria, hermanv58@yahoo.com



NOW OPEN
NORTH TORRANCE
18120 Hawthorne Blvd
SUN-THU 9AM-1AM | FRI-SAT 9AM-2AM

ORDER
NOW!



IF YOU LIVE ALONE

MDMedAlert!
✓ Ambulance ✓ Police/Fire
✓ Family/Friends ✓ GPS & Fall Alert
CALL NOW! 800.809.3570

STARTING AT
\$19.95
/mo.

md-medalert.com



**CATHOLIC
CEMETERIES
& MORTUARIES**

EVERLASTING FAITH. EVERLASTING LIFE.

A ministry of the Church
serving the faithful.

Learn about our 11 locations in
Los Angeles, Ventura and
Santa Barbara counties

(213) 637-7801 CatholicCM.org



For ad info. call 1-800-950-9952 • www.4lpi.com

St. Lawrence Martyr Church, Redondo Beach, CA

C 4C 05-4027

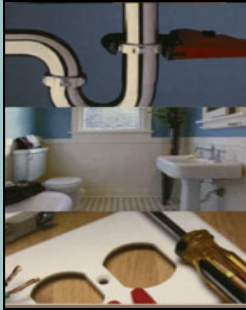


TRADITIONAL FUNERALS
CREMATION | PRE-PLANNING

Rice Center
Torrance FD 1113

White & Day Center
Redondo Beach FD 825

310-792-7599 LAFuneral.com



Your **ONE** stop shop for all your repair and improvement needs;
from complete facelifts to the smallest fix.

- Interior/Exterior Paint • Popcorn Removal • Finish Carpentry • Landscape
- Re-texturing • Cabinet Repair/Replacement • Fencing
- Flooring • Electrical • Power Washing
- Re-glazing • Drywall • Patio and Deck Repair
- Plumbing • Re-screening

CSLB. #1065288 • Matthew Quinn • 310-808-3717
matt@heckofadeal.net • www.heckofadeal.net

LICENSED & INSURED

ADT-Monitored Home Security
Get 24-Hour Protection From a Name You Can Trust

- Burglary • Flood Detection
 - Fire Safety • Carbon Monoxide
- 833-287-3502



CALIFORNIA AIR
Commercial and Residential
Heating and Air Conditioning

**Heating And Air
Conditioning
Residential
Repair
Service**



Call us Today To Book Now
310-530-0504
www.californiaaac.com

**SOUTH BAY
EQUITY LENDING**

Refinance
Purchase
Reverse Mortgages

Matthew Hadnett 310-378-8212
Mortgage Loan Broker - Active Parishioner
Cal-BRE #1319592 - NMLS #313412

**3 FREE
Music
Lessons**
310-749-7099
All Instruments!
SunsetLearningStudio.com
1 free trial-2 more free w/1st 10-pack

**Reliable
Caregivers**
(310) 218 8609

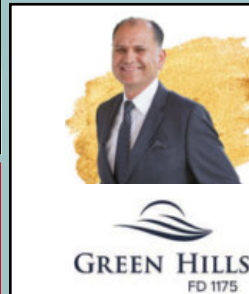
clearing Sunday
mornings for you.

Medication Management
at The Canterbury

Gain more you time.
thecanbury.org | (310) 984-1154

An ECS senior living community. Proudly nonprofit.
5801 Crestridge Rd. Rancho Palos Verdes, CA 90275
HOPE 191-603774, COA 257

the canterbury
The Art of Nobility



SAL CORREA
ADVANCE PLANNING ADVISOR
Hablo Español
Cell (310) 987-1104

E-Mail SCorrea@GreenHillsLA.com
PRE-PLANNING IS AN ACT OF LOVE, A GENEROUS GIFT
TO YOUR FAMILY AND FRIENDS, ALLOWING THEM TO
MOURN AND GRIEVE PEACEFULLY.

I HAVE ASSISTED HUNDREDS OF FAMILIES PLAN
THEIR LIFE CELEBRATION IN ADVANCE. I CAN MAKE THE
UNCOMFORTABLE PROCESS EASIER FOR YOU.

LIC. 0M61169

Peter Wollner • Real Estate Broker
Residential • Commercial
Sales • Leasing • Management
Lifelong Parishioner/SLM Alumni
NHL Brokers
310-259-6698 DRE#01381742

**DOES YOUR NONPROFIT
ORGANIZATION NEED
A NEWSLETTER?**

Engaging, ad-supported
print and digital newsletters
to reach your community.

Visit lpicommunities.com



SHORT STAFFED?

Place an ad here to find new
local talent for your business.



CALL 800-477-4574



Lic 957812

Free Camera Inspection
With Sewer Cleaning
MUST HAVE
Proper Clean Out
\$129

primetimeplumbing.net
310-984-0377

Drain Cleaning
\$99

\$75 OFF
ANY Plumbing Repair
of \$300 or More



**FLOOR COVERINGS
International**

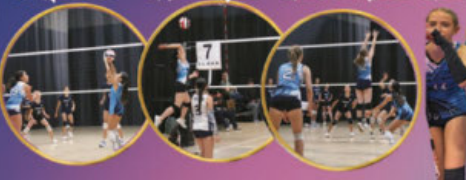
**One team. The whole project.
The Stars of FlooringSM.**

310-974-1141 | fcisouthbay.com

BOOK A FREE FLOORING CONSULTATION TODAY!



**14 & UNDER GIRLS
CLUB TEAM TRYOUTS**



FOR GIRLS 9-14 YRS. 4th - 8th GRADE
SATURDAY, OCTOBER 4TH
AGES 9-12 YRS @ 10-12PM
AGES 13 & 14 @ 1-3PM

**REGISTER
HERE**



LA Galaxy (back courts)
540 Maple Ave. Torrance
310-546-9150 | beachcitiesvb.com



For ad info. call 1-800-950-9952 • www.4lpi.com

St. Lawrence Martyr Church, Redondo Beach, CA

B 4C 05-4027



Tara McGuinness

Attorney, Collaborator & Mediator

Family Law, Trusts & Estates

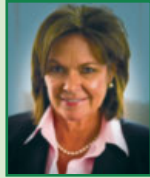
3424 W. Carson Street

Suite 570, Torrance

310.793.0800

www.taramcguinness.com

Serving South Bay For More Than 43 Years



kingdom outdoor living

DESIGN • BUILD • SOLAR



Located here in south
Redondo Beach

**"We, ALSO, help you
connect to a higher power!"**

Outdoor design/build
Residential/Commercial SOLAR

License #1063267

Please call for a
shining free consult!

**310-421-0014
KOLsocial.com**

Vince DeLuca

REALTOR – Broker

Active Parishioner

310-356-4232

ESTATE PROPERTIES

SENIOR CARE

Thrive in Your Own Home



A Peaceful Way
HOME CARE

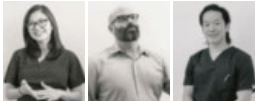
apeacefulwayhomecare.com

- Compassionate
- Trustworthy
- Reliable
- Family owned & operated
- Licensed/Bonded/Insured

310-377-3776

Terry McGovern/Parishioner

GOOD DERMATOLOGY



Consuelo
David
MD, MSC

Noah
Craft
MD, PhD

Young
Kwak
MD

(310) 405-0693

www.goodderms.com

3640 Lomita Blvd Ste 301 • Torrance

GUITAR LESSONS!

SLM Guitar Instructor,
Joe DiResta offers in-home, private
guitar and bass lessons. Joe is a USC
music grad & has over **17 years** of
teaching & performing experience.

Call today to schedule your **FREE LESSON!**

310.408.4142



SHORT STAFFED?

Place an ad here to find new
local talent for your business.



CALL 800-477-4574

Perry Klokkevold, DDS, MS, FACD

Board Certified Periodontist & Implant Surgeon

**COMPASSIONATE, HIGH QUALITY
CARE, CUTTING-EDGE TECHNOLOGY
AND MINIMALLY INVASIVE TECHNIQUES
ENSURE PRECISION AND COMFORT.**

Dental Implants | Bone Grafts

Ridge Augmentation

Periodontal Disease

Guided Tissue Regeneration

Gum Grafts

Esthetic Procedures



23430 Hawthorne Blvd, Suite #345 Torrance, CA 90505

310.325.9969 - www.permadent.com

State Farm

Suzy Zimmerman

AGENT

Lic. #
0F71296



Bus 310.377.9531

Fax 310.377.0954

www.ZimZimInsurance.com

suzy@zimziminsurance.com



SUPPORT
OUR PARISH



BICHLMEIER
INSURANCE
SERVICES, INC.

**Auto, Home, Business,
Life Insurance & more**

Carriers: Mercury, Liberty Mutual,
Travelers, Progressive & more



Phone: 310-376-8852 • Website: www.bisins.com



**CHERISH
HOSPICE**

Quality of Health is our Commitment to you!

2340 Plaza Del Arno Ste 230 • Torrance, CA 90501

(310) 320-1677

www.cherishhospice.com



Water Damage Restoration • Sewage
Backup and Cleanup • Mold Removal
Fire and Smoke Damage • Disaster Restoration
Commercial Property Damage

Mention this ad for 10% discount

310-600-3780 • 911restorationsouthbayla.com



SUPPORT OUR
ADVERTISERS!

catholicmatch®

California



CatholicMatch.com/CA



**LET'S GROW
YOUR BUSINESS**

Place Your Ad Here
and Support Our Parish!

**CONTACT ME
Mike McAleer**

MMcAleer@4LPi.com

(800) 477-4574 x6307

MEMORY, COFFEE & COMPASSION SUPPORT GROUP

for Family Caregivers of
DEMENTIA, ALZHEIMER'S
& PARKINSON'S Loved Ones

Meets 2nd & 4th Wednesday every month • 10:00-11:00am
ROLLING HILLS METHODIST CHURCH • 26438 CRENSHAW BLVD.

• STATE-OF-THE-ART MEMORY CARE HOMES •

TORRANCE • PALOS VERDES

SOLVANG • SANTA YNEZ VALLEY

**Schedule a
Tour Today!**



Sometimes, Love is not Enough

Visit us online at:

WWW.FAMILYCONNECTMEMORYCARE.COM



FOR MORE INFORMATION, CALL

310-383-1877

**Lauren
Mahakian**

Certified Dementia Practitioner
Certified Memory Care Specialist
Group Facilitator
Speaker/Trainer
MEd #17470143



For ad info. call 1-800-950-9952 • www.4LPi.com

St. Lawrence Martyr Church, Redondo Beach, CA

A 4C 05-4027