



TOWN HALL

Monday, October 20th, 2025

7:00 – 8:30 PM



St. Lawrence is 70
Where do we go from here?



ST. LAWRENCE MARTYR MISSION STATEMENT

St. Lawrence Martyr is a Roman Catholic community located in the Archdiocese of Los Angeles, California. ***The Word of God empowers us, the Eucharist nourishes and transforms us, and the Holy Spirit emboldens us. We accept the call of Jesus Christ to love and serve one another.***

We will:

Participate fully and actively with one another in prayer and Liturgy, going forth to witness to its spirit in our daily lives.

Foster and preserve a community where all are invited, welcomed, loved and appreciated.

Challenge ourselves constantly to see Christ within and among us.

Educate ourselves in the Scriptures and the Tradition of the Catholic Church, thereby developing the tools to share our faith.

Serve people in need, bring about justice where there is inequity, defend human dignity, and promote peace.

Recognize that parish leadership is the responsibility of the entire community and encourage members to answer that call.

OCTOBER 2025 UPDATE





AGENDA

Welcome & Opening Prayer

Introductions

Review Strategic Plan John Sabol, Pastoral Council President

Administration/Leadership

Capital Development/Infrastructure

Ministries/Outreach

Spirituality

Faith Formation

School Update Janell O'Dowd, Principal

Future Needs (Survey)

Finance Council Update John Sabol for Joe Krock, Chair

Capital Campaign Update Dan Houston, Finance Council/Campaign Committee Member

Q & A

Closing Prayer

OCTOBER 2025 UPDATE





PASTORAL COUNCIL CHARTER

The St. Lawrence Parish Pastoral Council, as representatives of the community at large, exists for the purpose of articulating and implementing the mission of St. Lawrence Martyr Parish.

The Council serves in an advisory capacity to the Pastor and gives counsel, advice and support.

OCTOBER 2025 UPDATE





2025 SLM PASTORAL COUNCIL MEMBERS

Lay Members

Scott Dominguez
Christine Fontana
Cynthia Austin
Adrian Vilca
Diane Krause
John Sabol
Ryan Stephenson
Rey Rojo
Jon Hauer
Raquel Suh

Clergy

Msgr. Paul Dotson
Fr. Charles Balamaze
Deacon Don Burt
Deacon Jim Egnatuk
Deacon Dale Sheckler

STAFF REPRESENTATIVES

Jenny Attanasio – Parish Business Manager
Janell O'Dowd – SLM School Principal

Denotes New Members

OCTOBER 2025 UPDATE



2018 STRATEGIC PLAN CATEGORIES

Administration / Leadership

Capital Development / Infrastructure

Ministries / Outreach

Spirituality

Faith Formation

St. Lawrence Martyr School

OCTOBER 2025 UPDATE





ADMINISTRATION / LEADERSHIP Ministry Fairs

All Ministries – Projected date February 8, 2026

Add Focused recruiting on specific Ministry Needs

More volunteers are needed in the Hospitality Ministry

**The Parish needs YOU!!
Where will you get involved?**

OCTOBER 2025 UPDATE





ADMINISTRATION / LEADERSHIP

STAFFING

Parish

Youth Minister (Sept, 2025)

Coordinator for Faith Formation (Oct, 2025)

School

1st Grade Teacher (Aug, 2025)

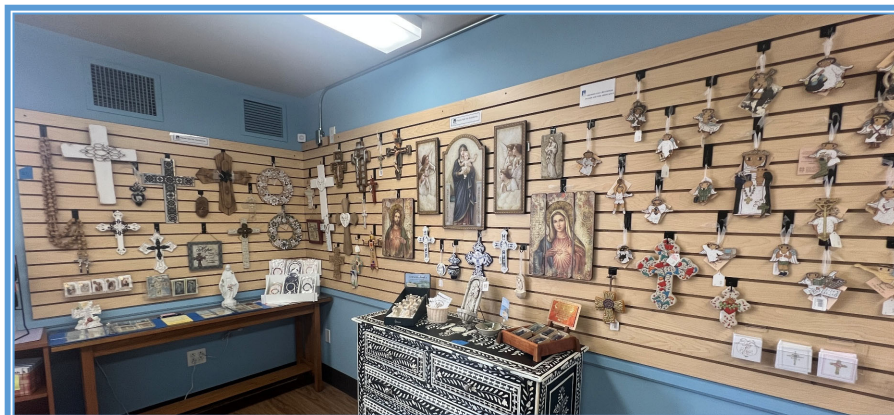
**What about the Ministry you belong to.
Are you developing leadership skills ?**



ST. LAWRENCE MARTYR
GIFT SHOP

ST. LAWRENCE MARTYR GIFT SHOP

- ❖ Celebrating our 2nd Anniversary in our New Location!
- ❖ We've returned to our Regular Hours:
 - ❖ Tuesday, Thursday, Friday: 10:00 am - 4:00 pm
 - ❖ Sunday: 8:30 am – 1:00 pm
- ❖ New seasonal offerings for Thanksgiving, Advent & Christmas!
- ❖ Offering a large selection of traditional and contemporary religious gifts - rosaries, crosses, bibles, statuary, jewelry, home goods, wall art, and sacramental gifts.
- ❖ *Complimentary gift wrapping available.*



THE COLUMBARIA AT ST. LAWRENCE MARTYR

INDOOR

Our indoor niches have all been reserved.



As of 10/8/2025

THE COLUMBARIA AT ST. LAWRENCE MARTYR

OUTDOOR

Total Niches 70		
Total Sold	5	7%
Total Remaining	65	



As of 9/18/2025

THE ST. LAWRENCE MARTYR MEMORIAL GARDEN

Total Bricks - 1112		
Total Sold	528	47% Sold
Total Remaining	584	



**Memorial Bricks can be purchased online.
\$150.00 per brick**

MEMORIAL GARDEN HOURS

Monday - Friday: 7:00 am - 3:30 pm
Saturday - Sunday: 9:00 am - 4:30 pm



As of 9/18/2025



SPIRITUALITY

Individual Devotional Payer

Rosary Groups (In Person and Online)

Divine Mercy (Offered Online)

Pastoral Care Variety of Services:

Grief Support Caregiver Support

Women in Transition Support

Post-Abortion Healing

National Alliance on Mental Illness Support

Adoration Chapel

Hours Posted in the Bulletin & on the Website; after hours with registration

*Monthly “**Holy Hour**” implemented with Adoration (1st Thursday)*

Missions & Retreats

December 3 & March 14-17 – Fr. Dorian Llywelyn

Cornerstone Retreats

OCTOBER 2025 UPDATE





FAITH FORMATION

Elementary School

- Child classes & Family education Events are utilized to strengthen the family bond around the child's experience of Religious Education.

Bridge (Middle School)

- 30 children signed up so far. Registration is still open.

Confirmation / High School

- Currently 113 teens enrolled in the Confirmation Program
- Planning an Adoration, Praise & Worship night
- 13 Confirmation Leaders are serving the Teens to grow their relationship with Jesus.



MINISTRIES/ OUTREACH

Increase Parish-Wide Celebrations & Activities

World Marriage Day Mass & Reception (February 13)

St. Joseph's Table (March 17)

Madonna Festival (May, 2026)

St. Lawrence Martyr Platinum Jubilee (August 9)

San Buenaventura Mission Pilgrimage (October 25)

Trunk or Treat (October 25)

Christmas Tree Lighting (December 5)



ST. LAWRENCE MARTYR
CATHOLIC CHURCH

OCTOBER 2025 UPDATE



MINISTRIES/ OUTREACH

Welcoming New Parishioners

Currently we have over 40 active ministries

Outreach outside of STLM

Saturday food distribution from the Frank Dieter Center

Adopt a Family at Christmas

Open arms / Whole person care

F.A.I.T.H. Ministry

Family Promise

School Donations to other Nonprofits

Youth Ministry in Collaboration with Knights of Malta

Saturday Street Ministry



ST. LAWRENCE MARTYR
CATHOLIC CHURCH

OCTOBER 2025 UPDATE



MINISTRIES / OUTREACH

Bulletin Focus on Ministries

Features & Meeting Schedules

Ministry Anchor page

Communications

Weekly Email (Flocknote)

FORMED

Hallow offered

New Initiative on Marriage

New or Revitalized Ministries

Singalong Jam Sessions

Paddles n Praise

Liturgical Committee

Senior Luncheon Ministry

OCTOBER 2025 UPDATE



SLM SCHOOL BELIEVE, BECOME, BELONG



OCTOBER 2025 UPDATE



SLM SCHOOL BELIEVE



Daily Prayer and Worship – Children participate in regular prayer, Mass, and liturgical celebrations that build a strong spiritual foundation.

Faith in Action – Emphasis on living Gospel values like kindness, compassion, service, and integrity.

Building Self-Worth – Helping each child understand they are created in God's image, with unique gifts and a meaningful purpose.

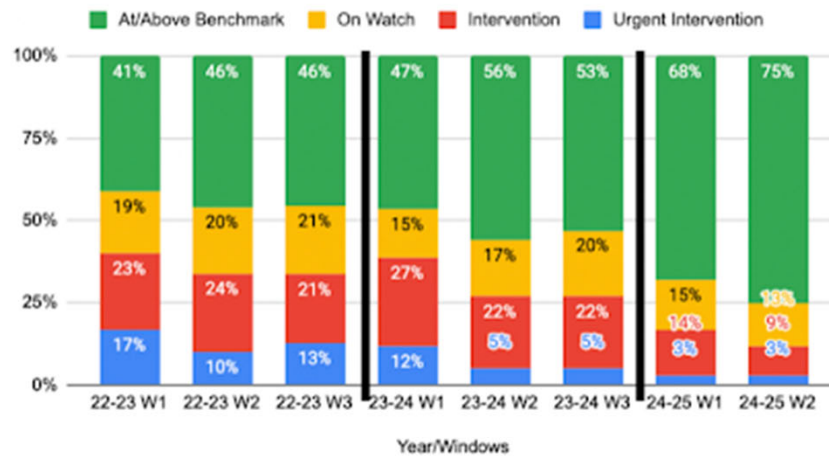
Trust in God's Presence – Encouraging students to rely on faith in both joyful and challenging times.



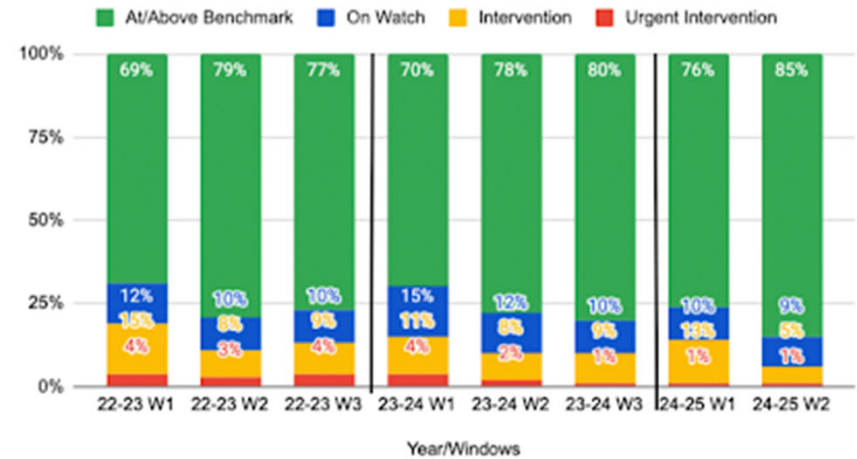
SLM SCHOOL BECOME



STAR Reading 2022-2025



STAR Math 2022-2025



OCTOBER 2025 UPDATE



SLM SCHOOL- ACADEMIC DECATHLON BECOME

1st Place Overall **Champion Red Team**

1st Place Logic **Regional**

2nd Place Super Quiz

1st Place Individual Literature

2nd Place Individual English

5th Place Individual Math

Top 10 Current Events

Top 10 Science



National Competition

3rd Place Logic

7th Place Overall

2nd Place Individual English

Placed top 10 Individual Social Studies

Regional - White Team

Top 10 Individual English

Top 10 Current Events

Top 10 Science



ST. LAWRENCE MARTYR
CATHOLIC CHURCH

OCTOBER 2025 UPDATE



SLM SCHOOL BELONG



Inclusive Learning Environment – A dedicated Resource Center provides personalized academic and emotional support for students with STEP plans (IEPs and 504 plans), ensuring every learner feels valued and included.

Belonging to a Vibrant Community – Students are encouraged to actively participate in both church and school life, building a strong sense of belonging in a faith-filled, welcoming, and fun community.

Faith in Action – Service projects foster a strong connection to both our local and global communities, while reinforcing the call to live out our faith through action.

Engaging Student Life – From sports teams and pep rallies to movie nights and pancake breakfasts, students enjoy a variety of fun activities that build school spirit and lasting memories.



ST. LAWRENCE MARTYR
CATHOLIC CHURCH

OCTOBER 2025 UPDATE



PARISHIONER'S FEEDBACK

What do You think St. Lawrence needs to better serve our Parishioners and the community?

SLM Strategic Plan Is a “Living Document”

- It needs to be updated.
- Your needs and wants will help form the future

Give us your feedback tonight with the forms available, or

Use this QR code to go directly to our website, or

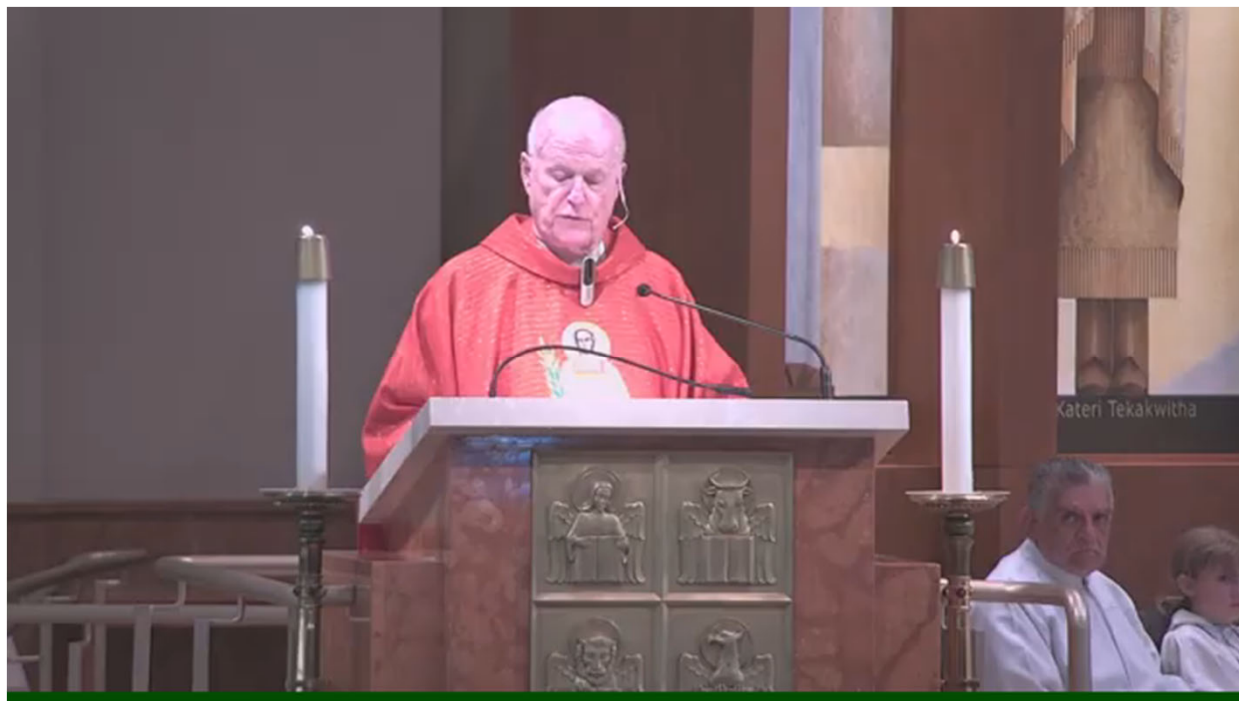
Send an email to Pastoral.Council@stlm.org



OCTOBER 2025 UPDATE

JUBILEE MASS VIDEO

AUGUST 9, 2025



OCTOBER 2025 UPDATE



FINANCE COUNCIL

SLM supports numerous ministries

- Liturgy (Daily/Sunday Masses, Special Liturgical Celebrations, Sacramental & Life Changing Celebrations)
- Faith Formation (Sacramental Preparation, Families in Faith Sessions, Bible Studies, Youth Ministry & Young Adult Ministry)
- Outreach (Food Pantry, Get on the Bus, ADLA Special Collections, Giving Tree & Saturday Street Ministry)

Approximately 10% of Budget Covers Material Expenses

- Environment & Church Supplies
- Parish Organizations & Programs
- Religious Education
- Staff Development

Approximately 60% of Budget Covers Personnel Expenses

- Parish Staff (incl. Administrative, Liturgical, Formation, Gift Shop, Custodial & Housekeeping)
- Clergy (Priests & Deacons)
- Groundskeepers (Contracted)
- Musicians & Vocalists

Remainder Covers Operating Expenses

- Utilities, Office Supplies, Routine Maintenance & Repairs



FINANCE COUNCIL

Weekly Contributions Amounts are Approximately the Same Since 2002

- For Fiscal Year 2002 \$1,742,080
- For Fiscal Year 2025 \$1,642,011
 - When adjusted for inflation FY '25 giving is 47% less FY '02

Consequently, Expenses Have Far Outpaced Weekly Contributions

- Cost cutting measures enacted post 2020 cannot close the gap
- Special gifts have helped sustain parish operations
- Finance Council is also exploring fund-raising opportunities

SLM's Plant and Equipment Continues to Age

- **Our Physical Plant is 70 years old**
- **Significant deferred maintenance expenses exist**



LOOKING TO THE FUTURE

Many of you shared your experience and memories and hopes for the future.

These comments are what you desired as the “Legacy for St. Lawrence”:

Be a welcoming place

Bring people in faith together

A place for everyone to feel welcomed

**Welcoming and accepting of people
who have disabilities**

Creating a home for all

**Inspired to join in spreading Good
News**

**Beacon of faith to each other and the
wider community**

Everyone is welcome

Being a faith-filled community

**A community of Christian faith and
friendship**

Keeping God as the center of our lives

**A beacon of light for the members of
the parish and for the greater
community**



FINANCE COUNCIL

When we look forward to the next 70 years and the legacy we want St. Lawrence to achieve, we have to ask ourselves how can we achieve our dream?

Please pray on and evaluate your current level of giving

Sign up for or review your online giving

Consider the immense local impact SLM Parish supports

We need to maintain our facilities as the infrastructure that supports this amazing Catholic community and all St. Lawrence Martyr provides!

OCTOBER 2025 UPDATE





CAPITAL CAMPAIGN – GOAL \$3M

Since March, 2023, Improvements to the Physical Plant

Deferred Maintenance

- Church Furnace Replacement (Completed - \$210,000)
- Hall Heating System Replacement (Project halted, replaced thermostats at minimal cost)
- Hillside (IP - \$650,000) *Added July, 2023*
- Rectory Repairs (Completed - Water Damage \$16,400; Termite Tenting \$16,000)
- School Repairs (Correction – All school repairs were completely paid through school funds, not Campaign funds)
- Upper/Lower Parking Lot Repaving (Completed - \$10,000)

Security

- Security Upgrades Phase 2 (Postponed due to need for additional funds)
- Fencing/Gates (Completed - \$29,000)
- Campus Lighting (Postponed)
- New AEDS (Completed – \$13,000)

Upgrades

- Courtyard Renovation (Completed - \$560,000)
- Hall A/V System (Bids Sought – Postponed to seek new bids; Bid #1 \$115,000; Bid #2 Never Received)
- Campus Painting (Completed - Bell Tower \$23,000; Campus \$9,500)

Called To Renew (Archdiocesan Campaign – SLM Assessment = \$1,070,000) - Balance \$665,000

Parishioners Generously Support These Projects

Thank you!

OCTOBER 2025 UPDATE





CAPITAL CAMPAIGN

In 2023, positioned as a “soft campaign”, SLM relied on direct marketing through the mail, in emails, and in the bulletin. It achieved a typical direct mail marketing response rate of 4%.

Pledges and Gifts = \$1.2M

- 224 families made gifts
 - 83% as OneTime Gifts
 - 17% as Pledges with 84% received

Revised Approach Needed

- In agreement with the Finance and Pastoral Councils, SLM sought out to partner with Changing Our World (Nonprofit & Philanthropic Consulting Firm) to reposition and reenergize the campaign.



CAPITAL CAMPAIGN

Changing Our World offers

- Expertise in matching the approach and planning to the organization and campaign goal
- Analysis of public records to establish the “giving potential” of members within the community or organization
- Guidance in approach and messaging consistent with the organization’s mission

“Who to ask and how to ask.”



CAPITAL CAMPAIGN

Following the successful completion of the campaign, we will set SLM on a more sustainable path employing parish wide stewardship practices.

By engaging parishioners in giving of themselves,

- their time in prayer
- their gifts and talents in service, and
- their donations in gratitude

for all God has blessed them with, we will grow in this 70th Anniversary Year what those 70 years ago began.



PARISHIONER'S FEEDBACK

What do You think St. Lawrence needs to better serve our Parishioners and the community?

SLM Strategic Plan Is a “Living Document”

- It needs to be updated.
- Your needs and wants will help form the future

**Give us your feedback tonight with the forms available, or
Use this QR code to go directly to our website, or
Send an email to Pastoral.Council@stlm.org**





QUESTIONS & DISCUSSION

Please come to the microphone in the center aisle if you have a question about our Parish.

Please keep the questions brief, no more than two minutes, and relevant to the audience.

- **Strategic Plan and presentation materials are available:**
www.stlm.org/pastoral-finance-councils
- **Offer Feedback or Input:** Pastoral.Council@stlm.org



CLOSING PRAYER

Thank you for joining this gathering.

Please share what you heard with fellow parishioners who could not attend.

St. Lawrence is 70 this year

We can't go forward without YOU

OCTOBER 2025 UPDATE

