

St. Jude Catholic Church

A Stewardship Parish

92-455 MAKAKILO DRIVE, KAPOLEI, HI 96707

PHONE: (808) 672-8669

www.stjudehawaii.org

email: admin.stjude@rcchawaii.org

“St. Jude Church—Hope for the despaired”



QR CODE

January 18, 2026: Second Sunday in Ordinary Time

Fr. Rheo Ofalsa
Pastor

Fr. Melchor Palomares
Parochial Vicar

Dcn. John Coughlin
Permanent Deacon (Ret.)

Dcn. Will Friese
Permanent Deacon

Dcn. Raul Perez
Permanent Deacon

Dcn. Derek Wong
Permanent Deacon

The Baptism of Christ
by Antoine Coypel
c. 1690, oil on canvas

Los Angeles County Museum of Art
Wikimedia Commons [Public Domain]



PARISH OFFICE HOURS

MONDAY—FRIDAY

9AM TO 5PM

CLOSED WEEKENDS,

FEDERAL/STATE HOLIDAYS

REGULAR MASS SCHEDULE

MAY CHANGE DURING
HOLIDAYS

SATURDAY 5PM

SUNDAY 7AM, 9AM,

11AM, 5PM

WEEKDAY MASSES

MONDAY, TUESDAY,
THURSDAY, FRIDAY 8AM
WEDNESDAY 7PM

UPCOMING BAPTISMS

Feb. 7 & 21, 2026 (6PM)

CONFESSIONS

SATURDAY 3:45-4:45PM

MATRIMONY

CONTACT PARISH OFFICE AT
LEAST 6 MONTHS PRIOR TO
DESIRED WEDDING DATE TO BEGIN
PREPARATION PROCESS

ANOINTING OF THE SICK

FIRST 1ST SATURDAY OF THE
MONTH AT 8AM MASS,
OR BY APPOINTMENT

LAST RITES

CALL PARISH OFFICE OR
AFTER HOURS: (808) 492-1052

FIRST HOLY COMMUNION,

CONFIRMATION,

ORDER OF CHRISTIAN INITIATION FOR ADULTS

&

YOUTH FAITH FORMATION

ALL REGISTRATION CLOSED
RE CLASSES STARTED 9/14
OCIA ONGOING

ADULT BIBLE STUDY

THURSDAY 7PM (ONGOING)

ST. JUDE MISSION STATEMENT

We, the community of St. Jude, commit ourselves to Jesus Christ our Savior, His teachings and the Tradition of the Roman Catholic Church. With the guidance of the Holy Spirit, we embrace and nurture our culturally diverse community through worship, evangelization, renewal and service.

St. Jude Catholic Church now accepts electronic donations Give Electronically

Checking/Savings ◊ Credit/Debit Card

Participate Today

Electronic Giving is a convenient way to provide consistent financial support to our church. Please contact the church office to learn how you can participate. Or sign up online: visit our parish website at www.stjudehawaii.org and click on the "Online Giving" button on the right panel.

For your convenience, volunteers will be available 15 minutes before and after Mass to process donations on the weekends.

To further enhance our services, we also have the attached barcode. Just scan this barcode-like QR code image with a smartphone's QR decoder, and it will instantly connect you to the mobile version of your web page, providing you a quick and easy access to your web page, without having to type out a long web address in order to locate your link.



Powered by:

—ATTENTION—

MINISTRY HEADS & PASTORAL COUNCIL MEMBERS

Announcements you wish posted in the Bulletin must be submitted in advance no later than 5PM TUESDAY afternoon if you wish the announcement posted by that weekend. Requests must be sent via email, **NOT BY TEXT**. Please indicate the exact information you want published. Staff will not be responsible for finishing incomplete details. Only approved announcements will be posted. Email your requests to thunt@rcchawaii.org with cc to rofalsa@rcchawaii.org. There will be **NO** exceptions to late entries. Mahalo!

PARISH MINISTRY CONTACTS

Parish Committees

Pastoral Council	To be determined
Finance Council	Kalani Frank
Parish Planning & Building	Roland Calimlim
Stewardship	Socorro Guzman
Development	Angie Armas

Liturgical

Altar Servers	Veronica Langford
Extraordinary Ministers of Holy Communion	Jim Teson
Lectors	Jim Teson
Liturgical Environment	Barry & Belinda Danielson
Music	Donna Caris
Ushers	Mike Reis

Parish Ministries

Bereavement	Gussie Hayashi
Bible Study	Deacon Will Friese
Blood Drive	Gregg Patch
Cash Counters	Lucy Pascual
Children's Choir	Cecily Best
Electronic Offertory	Lucy Pascual
Emergency Preparedness	EMTs present during Masses
After Mass Fellowship	Socorro DeGuzman
Food Pantry/Outreach	Carlin Kaeo
Homebound	Socorro DeGuzman Marina Takahashi
Hospitality	Judy Datzman
Legion of Mary	Ana Quintal
Parking/Traffic	Kalani Frank
Prison	Deacon Will Friese
Right to Life	Teresa Fredericks
Rosary-Making	Geri Tong
Senior Box	Judy Datzman/Pat Dukes
Senior Chair Exercises	Theresa Basta
Ukelele Club	Brigitte Kameoka
Vocations	Judy Datzman
Widows/Widowers	Gerry Kimokeo
Women's	Shanae Souza
Young Adults	Katy Doty/Oscar Parmenter

Lay Organizations

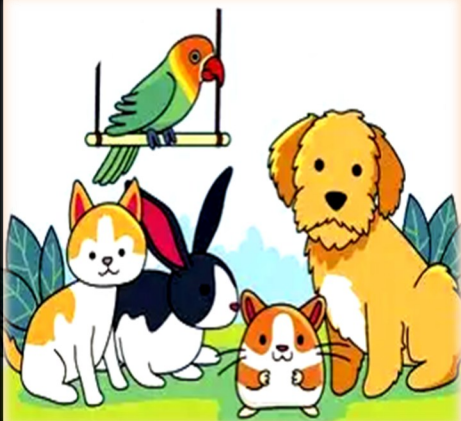
Basic Christian Community	Deacon Raul Perez
Filipino Catholic Club	Aida Turcsik
Knights of Columbus	Richard Lacuesta

PET POLICY ON PARISH PROPERTY

We maintain a strict *no-pet policy* to ensure a safe, comfortable, and allergen-free environment for all parishioners and guests and to protect parish property from potential damage.

Except for service animals or approved support animals for persons with disabilities, no pets are allowed anywhere on parish property without prior written authorization.

We hope you can make alternative arrangements for your pet, and we appreciate your understanding that pets are not permitted.



The world asks, "What does a man own?"



Christ asks, "How does he use it?"

1/05/26 – 1/11/26 Weekly Financial Report¹

Total Weekly Collection: \$ 22,284.91

Breakdown:

5 p.m. Vigil (Saturday):	\$2,502.00
7 a.m. Sunday:	\$2,908.00
9 a.m. Sunday:	\$3,354.00
11 a.m. Sunday:	\$2,653.49
5 p.m. Sunday:	\$1,208.85
Online Giving:	\$6,861.43
Daily Collections	\$2,615.00
Miscellaneous ² :	\$1,287.10

Benchmarks:³

Weekly Goal⁴: \$20,400.00

Fiscal Year-to-date Receipts / Budgeted:
\$627K / \$570K

Mortgage Capital Reserve⁵:
\$4,052,184.09 / \$10M

Moving Monthly Mortgage Allocation⁶:
\$27K / \$64K

¹ Format subject to change in the interest of communicating relevant financial information weekly, balancing clarity with simplicity; the Parish Finance Council reviews parish finances in more detail at a minimum of each fiscal quarter, and advises the pastor on all financial matters.

² Including Mass intentions, sacramental offerings, blessings, outreach & candles, etc.

³ Benchmarks include new categories of *Mortgage Capital Reserve* and *Moving Monthly Mortgage Allocation*; both goal amounts must be met in order for the design and construction of a new Church building and campus to be considered feasible at the future site of St. Jude Parish (at the *Leihano* property).

⁴ **Proposed Updated Budget divided by 52 weeks**; weekly collection amounts can vary according to season and celebration (e.g. Christmas collection, Easter Collection, etc.).

⁵ Capital funds reserved for design/construction of new Church building/campus; consider this akin to a mortgage deposit that is required in order to secure a loan for the remaining balance; these funds are not assessable (i.e. "taxable") by the Diocese of Honolulu; the goal amount is 1/2 the estimated construction amount, subject to change and based on latest estimates. **Adjusted for schematic design payment.**

⁶ Shared for informational purposes only, updated annually, and subject to change; the \$27K is the monthly mortgage amount that St. Jude can currently afford based on present financial situation and mortgage assumptions; the \$64K is the goal amount required to afford a \$10M loan, which is a rough estimate of the loan amount necessary in order to complete building a new Church building/campus at the *Leihano* property; \$27K will be allocated each month into the Mortgage Capital Reserve for Fiscal Year beginning on July 1, 2025 and ending on June 30, 2026; this amount may increase or decrease in the next fiscal year.

THE SECOND SUNDAY IN ORDINARY TIME

*"Now the Lord has spoken who formed me
as his servant from the womb."
—Isaiah 49:5*



God have given each of us different gifts. In order for God's plan to work, you have to do what God is calling you to do, and I have to do what God is calling me to do. And guess what? God has given each of us a different Stewardship! So, stop comparing yourself to others. Don't let envy and jealousy enter your life. Be thankful for the gifts God has given you and become the saint that God is calling you to be.

LET'S TAKE A MOMENT... By Tere Hunt

Edition #2

There are times when our prayers seem to be just a litany of words we utter, where our words becomes just a habit of recitations and movements to which our efforts feel perplexingly powerless. It's like you hit the wall, and nothing works. When this arises, fear sets in then you resort to some sort of superstitious habit, like *"If I follow these steps properly, healing will come;"* or *"If I pray the prayer the right way, the enemy will leave."* God allows our go-to devices to fail not because we did something wrong, but perhaps He is leading us to something beyond what we fear or understand. We cling to what is similar, to what we've been used to generate like a security blanket. Our methods of praying, the language we practice routinely, these are all standard tools. But the essence of our tools lies farther. When we deliver our prayers and manifest the rituals, we are delivering a performance, yet we are also restoring and building our relationship with Him. Mastering the rosary is brilliant, like mastering a skill. But trusting the God we are conveying it to is allowing God to make us whole. So we pray because it is our practice to do so. But it is the journey towards building our trust in Him that makes the journey complete. We have learned how to know all about God more than how to *know Him*. That is why we fail or fall short in our prayers. We fail to see the posture of how our soul travels towards unraveling the mystery of how God's love will bring us closer to Him in different ways. I am truly at a loss for words to describe the relationship that we have yet to experience when we pray because as humans, we are limited in our capacity to create this alliance. I, too, falter for His mercy. Intense faith grants us *to stand closer to Him* but not yet *to rest within Him*. We yearn for His assurance. May our diligent prayers bring us to the threshold of His embrace



For Health, Comfort and Healing:

Helen Onusconich, Mervin Dimatulac,
Nico Reyes, Emily Foster

For Repose of the Souls:

Domingo Santa Monica, Jr., Angelo Canionero, Sr.,
Onolina Fuamatu, Antonio Boquer, Jr.

PLEASE KEEP OUR BROTHERS & SISTERS IN PRAYER

Submit names at 672-8669 to be posted for a month ONLY

Light in the Darkness



Matthew 4:12-23

Next Sunday's Readings

(January 25, 2026)

Isaiah 8:23-9:3

1 Corinthians 1:10-13, 17

Matthew 4:12-23

Read / Reflect / Share



Young Adult Ministry

We'd love for you to be part of something meaningful! Our Young Adult Ministry is a place to connect with others, grow in faith, and make a real difference in our community. Whether you're looking for the friendship, purpose, or a deeper relationship with God,

there's a place for you here. Join us weekly for Scripture study, prayer, and fellowship. Come as you are—we can't wait to welcome you!

Tuesday, Jan .20

Tuesday, Jan. 27

Tuesday, Feb. 3

7pm MPR

Contact: Kathrine at k.doty1999@gmail.com

CALLING ALL YOUNG ADULTS AGES 18-39!



The Legion of Mary will be hosting a 9-day Novena in preparation for the great feast of the **PRESENTATION OF THE LORD** and celebration of *Candlemas* (candle blessing). Novena prayers will be prayed 15 minutes before Mass. All are invited to join in.

Starts: Saturday, Jan 24 / Ends: Sunday, Feb 1

Monday, Feb 2—Feast Day Celebration

with candle blessings at 8am

Bring your candles for blessing!



FUNERAL SERVICE ANNOUNCEMENT

WEDNESDAY, JANUARY 21ST

FOR

ANTONIO "TONY" BOQUER, JR.



9:30 AM ~VISITATION

11:00AM ~ MASS

Rest In Peace

FUNERAL SERVICE ANNOUNCEMENT

FRIDAY, JANUARY 23RD

FOR

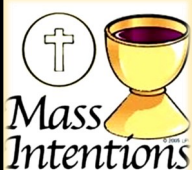
ROSA ROL PASCUA



10:00 AM ~MASS

1:30AM ~ BURIAL

Rest In Peace



We recently discovered a technical issue in our Mass intentions calendar that may have caused scheduling errors. We sincerely apologize for the scheduling glitches that affected some of your Mass intention requests.

We understand how important these intentions are to you and your loved ones, and we deeply regret any confusion or inconvenience this may have caused. Please know we are ensuring every intention is honored and have redirected your intention to an available date. Thank you for your patience, understanding, and continued prayers.



Many have been generous to our clergy through the holidays, giving monetary gifts, dropping treats and delicacies, even offering prayers. As a token of their appreciation, they would very much want to convey their gratitude by mailing/sending their thank you's;

however, the sender almost always never provides a return address, or, the handwriting cannot be deciphered! Which leaves them having to impose on the office's assistance and hope they rightfully identify the donors. So if by chance you have not received a thank you card as a result of signing just an initial "M" or simply indicating "Norman," rest assured they have already delivered their thanks to you in prayer.

PLEASE consider sticking your return address to the envelopes and signing your cards legibly. *Mabalo!*

PARISH REGISTRATION INFORMATION



We are currently renovating software to accommodate the process of new parish registrations and member updates. You can still register with our parish by going to our website at www.stjudehawaii.org, click "**About**" then "**Registration**" and follow the prompts indicated. Once we have the software operational, the new portal design will streamline the registration experience and enhance interactions with us. This user-friendly platform will allow registered parishioners to access resources and stay connected. We thank you for your patience.



Saint Jude Catholic Church

92-455 Makakilo Drive, Kapolei, HI 96707-1270

Phone: (808) 672-8669 • Fax: (808) 672-3779 • www.stjudehawaii.org

Dear parishioners,

In Romans chapter 5, St. Paul proclaims: “And hope does not disappoint, because the love of God has been poured out into our hearts through the Holy Spirit that has been given to us” (Romans 5:5). This passage reveals the very foundation of Christian stewardship—that our generous response flows not from obligation, but from the divine love that fills our hearts and kindles unshakeable hope within us. When we embrace stewardship as a way of life, we become living witnesses to this hope, allowing God's love to overflow through our time, talent, and treasure into the world around us.

We are excited to share the encouraging results from the 2025 Stewardship Renewal. I want to personally thank each person that returned a commitment card and chose to take intentional steps to grow closer to Christ through the use of your time, talent, and treasure.

133 families returned commitment cards. These families made 1,132 prayer commitments, 371 commitments to parish ministries — including 168 new commitments to ministries — a pledged offertory increase of over \$107,000 and 30 families previously not involved in ministry have signed up to participate in parish life. These remarkable results demonstrate how the Spirit's outpouring of divine love continues to inspire hope-filled stewardship throughout our parish community.

It is important to remember that these numbers are just a glimpse of how God's love, poured out through the Holy Spirit, is working in the hearts of our parishioners. As members of our parish continue their faith journey, each commitment represents a soul responding to the invitation of divine love. These results offer encouraging signs of growth at St. Jude—seeds that can bear lasting fruit as parishioners discover deeper meaning in their stewardship calling and experience the joy that comes with placing our trust in Christ.

I am excited to share these results with all of you. Let us pray for each other as we strive to fulfill our commitments.

In Christ,

Fr. Rheo Ofalsa
Pastor

2025 Stewardship Renewal Summary

Registered Households	1204
Commitment Cards Received	133
Prayer Commitments (<i>Stewardship of Time</i>)	1,132
Ministry Commitments (<i>Stewardship of Talent</i>)	371
<i>Re-commitments to ministries</i>	203
<i>New commitments to ministries</i>	168
Offertory Commitments (<i>Stewardship of Treasure</i>)	99
<i>Average pledge</i>	\$2,632
<i>Total annual amount pledged</i>	\$260,610
<i>Actual giving past 12 months from pledging families</i>	\$153,298
<i>Pledge Offertory Increase</i>	\$107,312

2025 Stewardship Renewal Highlights

90% of participating households made **prayer commitments**.
Each household made an average of 9.4 prayer commitments.

Parishioners are taking ownership in the parish by signing up for ministries in large numbers.
Approximately **75%** of the participating households **made a commitment to ministry**.

168 of the 371 ministry commitments were **NEW commitments**, which is an indication that parishioners are stepping forward to get more involved in parish life.

Relatively inactive families are becoming involved at St. Jude. **30 families** who were not previously active in any ministry **signed up to get involved in ministries**.

74% of participating households made a **treasure commitment**, totaling \$260,610 from annual pledges.
This is 70% more than they had actually given the previous 12 months.

Report of 2025 Stewardship Renewal Commitments

Stewardship of Time (Household)

Prayer Commitments	1,132
Commitment Cards with Prayer Commitments	120
Average Number of Prayer Commitments per Family	9.43
Attend Adoration at least once a month	33
Attend Mass every Sunday and on Holy Days	114
Attend weekday Mass at least once a week	44
Create a dedicated "prayer space" in my home	60
Go to Reconciliation every other month	30
Invite a friend or acquaintance to Mass	34
Pray for an increase in vocations	52
Pray for inactive Catholics	70
Pray for my country daily	74
Pray for our clergy and religious	70
Pray for the sick of our parish	71
Pray the Divine Mercy Chaplet daily	35
Pray the Rosary weekly	84
Pray together with my loved ones	65
Read the Bible at least once a week	62
Reflect on the readings before Mass	57
Schedule time for a spiritual retreat	23
Spend 15 minutes a day in personal prayer	92
Work to overcome a sinful habit	62

Stewardship of Treasure (Household)

Households with Treasure Commitments	99
Average Annual Pledge	\$2,632
Total Annual Amount Committed	\$260,610
Actual Giving Past 12 Months	\$153,298
Pledge Offertory Increase	\$107,312
Weekly Pledges	63
Monthly Pledges	30

There were 6 households that made a pledge with an interval amount other than weekly or monthly.

Stewardship of Talent

Ministry commitments	371
<i>Already Involved</i>	<i>203</i>
<i>Interested In Joining.....</i>	<i>168</i>
Commitment Cards with talent commitments	100
Average Number of Ministry Sign-ups per family	3.71

	Already Involved	Interested In Joining	Total
Adult Bible Study	10	8	18
Altar Servers.....	5	0	5
Bereavement	2	5	7
Building Committee	1	7	8
Development Committee	3	6	9
Emergency Preparedness	0	7	7
Environment	2	2	4
Extraordinary Ministers of Holy Communion	22	14	36
Filipino Catholic Club	23	14	37
Finance Council.....	2	7	9
Homebound	8	4	12
Hospitality.....	4	6	10
Knights of Columbus (K of C)	12	3	15
Lector	17	10	27
Legion of Mary.....	9	4	13
Leihano Project Oversight Committee	2	1	3
Money Counting and Offertory	11	2	13
Music.....	16	9	25
Order of Christian Initiation of Adults – OCIA	4	3	7
Religious Education PreK-fifth Grade Volunteer	7	3	10
Right to Life.....	2	2	4
Rosary-Making Ministry.....	6	7	13
St. Jude Food Pantry	2	19	21
Stewardship Committee	1	3	4
Ukulele Club.....	3	6	9
Ushers/Greeters	14	11	25
Vocations	4	2	6
Widows/Widowers	9	3	12
Youth Faith Formation Grades 6-12 Volunteer	2	0	2

2nd Sunday in Ordinary Time Stewardship Servants

ORDINARY TIME By Fr. Ron Rolheiser *

In a marvelous little book entitled, *The Music of Silence*, David Steindl-Rast highlights how each hour of the day has its own special light and its own particular mood and how we are more attentive to the present moment when we recognize and honor these “special angels” lurking inside each hour. He’s right. Every hour of the day and every season of the year have something special to give us, but often times we cannot make ourselves present to meet that gift.

We grasp this more easily for special seasons of the year. Even though we are sometimes unable to be very attentive to a season like Christmas or Easter because of various pressures and distractions, we know that these seasons are special and that there are “angels” inside them that are asking to be met. We know what it means when someone says: *“This year I was just too tired and pressured to get into the Christmas spirit. I just missed Christmas this year!”*

And this isn’t true just for special seasons like Christmas and Easter. It’s true too, perhaps especially true, for the season we call Ordinary Time. Each year the church calendar sets aside more than thirty weeks for what it calls “Ordinary Time,” a season within which we are supposed to meet the angels of routine, regularity, domesticity, predictability, and ordinariness. Like seasons of high feast, this season too is meant to bring a special richness into our lives.

But it’s easy to miss that season and its intent, both of them. The term “*Ordinary Time*” sounds bland to us, even as we unconsciously long for precisely what it is meant to bring. We have precious little “*ordinary time*” in our lives.

As our lives grow more pressured, more tired, and more restless, perhaps more than anything else we long for ordinary time, quiet, routine, solitude, and space away from the hectic pace of life. For many of us the very expression, “ordinary time,” draws forth a sigh along with the question: *“What’s that? When did I last have ‘ordinary time’ in my life?”* For many of us “ordinary time” means mostly hurry and pressure, “the rat race,” “the treadmill.”

Many things in our lives conspire against “*ordinary time*,” not just the busyness that robs us of leisure, but also the heartaches, the obsessions, the loss of health, or the other interruptions to the ordinary that make a mockery of normal routine and rhythm and rob us of even the sense of “*ordinary time*” That’s the bane of adulthood.

Many of us, I suspect, remember the opposite as being true for us when we were children. I recall as a child often being bored. I longed almost always for a distraction, for someone to visit our home, for special seasons to celebrate (birthdays, Christmas, New Year’s, Easter), for most anything to shake up the normal routine of “ordinary time.” But that’s because

time moves so slowly for a child. When you’re seven years old, one year constitutes one-seventh of your life. That’s a long time. In mid-life and beyond, one year is a tiny fraction of your life and so time speeds up—so much so in fact that, at a point, you also sometimes begin to long for special occasions to be over with, for visitors to go home, and for distractions to disappear so that you can return to a more ordinary rhythm in your life. Routine might be boring, but we sleep a lot better when our lives are being visited by the angels of routine and the ordinary.

Today there’s a rich literature in both secular and religious circles that speaks of the difficulties of being attentive to the present moment, of meeting, as Richard Rohr puts it, “the naked now,” or what David Steindl-Rast calls, “the angels of the hour.” The literature varies greatly in content and intent, but it agrees on one point: it’s extremely difficult to be attentive to the present moment, to be truly inside the present. It’s not easy to live inside “ordinary time.”

There’s a Chinese expression that functions both as a blessing and a curse. You make this wish for someone: *may you live in interesting times!* As children, had someone wished that on us it would have meant a blessing; our lives then were replete with routine and the ordinary. For a child time moves slowly. Most children have enough of ordinary time.

However, as adults, for most of us, that wish is probably more curse than blessing: the pressures, heartaches, illnesses, losses, demands, and seemingly perpetual interruptions that beset our lives, though perhaps not normally recognized as “interesting times,” are indeed the antithesis of routine, regularity, domesticity, predictability, and ordinariness. And they deprive us of “ordinary time.”

The church challenges us to be attentive to the various seasons of the year: Advent, Lent, Christmas, Easter, Ascension, and Pentecost. Today, I submit, it needs to challenge us particularly to be attentive to “ordinary time.”

Our failure to be attentive here is perhaps our greatest liturgical shortcoming.

*Used with permission of the author, Oblate Father Ron Rolheiser. Currently serving as President of the Oblate School of Theology in San Antonio, Texas.



Respect Life Spiritual Retreat

Saturday, January 24 (9-3pm)
 St. Anthony Retreat Center
 3351 Kalihi Street, Honolulu, HI
 (808) 673-3074

Retreat Director: Fr Shenan Bouquet
 President of Human Life International

ABOUT US WHO WE ARE
 The Respect Life Ministry promotes the sacred dignity of all human life, from conception to natural death through prayer, education and action on issues of: abortion, euthanasia, assisted suicide, human trafficking, miscarriage and bioethics. Our prayer - conversion of hearts and minds to believe in, and live a Culture of Life.



Mass with Adoration

Rally/March

Novena

Thursday, January 22, 2026

Friday, January 23, 2026

January 14 - 22, 2026

Co-Cathedral of St Theresa

Hawaii State Capitol
 2 - 5PM

9 Days for Life

- Mass Start: 6:30 PM
 - Bishop Larry Presiding

Pray to Protect Human Life
www.9DaysForLife.com

Let's make March for Life 2026 bigger than ever!
 Join us at the State Capitol on January 23. Pray with us on January 22 at St. Theresa Co-Cathedral. Pray the 9 Day Novena for the Culture of Life. Decorate your parish grounds with pinwheels. Everyone is invited to join us for a spiritual retreat with Father Boquet on January 24, 2026.
 —Teresa Fredericks

SPECIAL ANNOUNCEMENT!
 Fr. Shenan Bouquet will be speaking at the Youth Faith Formation Ministry's gathering on **Monday, January 26th, at 7pm**. This is also open to everyone who wishes to meet the leading expert on international pro-life and family movement, and has journeyed over 90 countries on pro-life missions over the last decade. A 4th Degree Knight, Knight of the Equestrian Order of the Holy Sepulchre, and National Chaplain for the Catholic Daughters of the Americas, he is known for his commitment to family and the importance of the domestic church in society.



2025 Tax Letters

St. Jude will be providing the tax statements reflecting your 2025 tithes/contributions totaling amounts of at least \$50. You should receive them by the end of January 2026. If you have moved, or changed your address, please make sure you notify the post office so they can redirect same to your most updated address. We will only mail letters to the addresses provided to us. Moreover, if you **HAVE NOT** received the letter by mid-February, please contact our office at (808) 672-8669.

ATTENTION GREETERS, USHERS, AND MASS COORDINATORS: PLEASE BE AWARE OF WHERE OUR EMERGENCY RESPONSE TEAM MEMBERS ARE SEATED OR LOCATED DURING YOUR ASSIGNED MASS SO YOU CAN READILY NOTIFY THEM SHOULD AN INCIDENT ARISE WITHOUT FURTHER DISRUPTION. MAHALO!

EUCCHARISTIC MINISTERS' SCHEDULE - for the weekend of: Jan. 24—25, 2026

	Sat 8am	Sat 5pm	Sun. 7am	Sun. 9am	Sun. 11am	Sun. 5pm
Lectors		Bryant Tadeo Catalina Lacuesta	Kayla Quiocho Nellie Nagrampa	Afio Pula Jonny Willing	Belinda Danielson Timothy Foster	Socorro DeGuzman Janet Jarmuz-Bamford
EMs		Conchita Castillo Richard Lacuesta Myrna Lactaon Lesina Peato Terry Morales Nancy Watson	Estrella Asuncion Cecelia Camarillo Tere Hunt Bernadette Robins Aida Turcsik Gwen Valparaiso	Dennis Enriquez Jeannie Enriquez Lydia Fontes Trinidad Rita Pauline Simao Lana Vargas	Nory Bartolome Wilfred Bucher Bernadette Fajardo Andrea McClelland Suzette Rivera Marina Takahashi	Brigida Cariaga Judy Datzman Grace Mizumoto Gisele Rerolle Allie Wong Michael Wong
Altar Servers		Gabriel Langford—Cross Alec Walrod—Book	Luke Suzuki—Cross Noah Suzuki—Book	Julie Fualema—Cross Remma Ubengen—Book	Anaya Domingo—Cross Isaiah Paguyo—Book	Jacob Rivera—Cross Sofia Banaga—Book
Ushers		Eliitha Sulkowski Christopher Awa Paul Sulkowski Veronica Ortiz	Yvonne Alakai Clyde Vierra	Ransen Pasion Edwin Arellano Makeilah Arellano	Tita Transfiguracion Louise Apodaca	Ryan Ferreira Mike Reis
Mass Coordinators		Keahi Teson	Judy Datzman	Paula Abrizado	Elizabeth Recamara	Judy Datzman

Jerrilyn NADRASIK CPA LLC

for all your tax and accounting service needs
INDIVIDUAL TRUST BUSINESS
Schedule an in-person or virtual meeting today

phone: (808) 384-3354 email: jnadrasiccpa@outlook.com

PACIFIC GUARDIAN LIFE

Pacific Guardian Life can provide you with:

- Whole Life Insurance Plans
- Guaranteed 15 Year Pay Children's Insurance
- 10, 20, 30 Year Term Life Insurance Plans

For a free consultation, contact:

Cora Baclic-Credo
Brokerage Sales Manager
(808) 927-4081
cbacliccredo@pacificguardian.com

MILL TOWN DENTAL CLINIC
DR. MARILOU CABALO CABABAT

OUR SERVICES :

- ✔ Family & Cosmetic Dentistry
- ✔ White Fillings, Same Day Crowns
- ✔ Digital Dental Office
- ✔ Metal Free Dentures
- ✔ Implants
- ✔ Invisalign

(808) 678-8300
Located at the **Filipino Community Center in Waipahu**

OFFICE HOURS
Mon, Tue, Thurs, Fri 8am-12pm and 1pm-5pm
Closed Wednesday
Weekend Appointments Available

• Most Insurances Accepted, Including Devoted Plans
• Payment Options Available
• No Insurance, No Problem! Ask about our New Patient Special!

The FILCOM Vision Center
Dr. Calvin Alonzo, Optometrist

(808) 677-7222
WAIPAHU – The Filipino Community Center
94-428 Mokuola St., Ste 102

(808) 847-7222
HONOLULU – Kuakini Physician's Tower
405 N. Kuakini St., Ste 605

Filipino Speaking Doctor and Staff

Most Insurances Accepted

Same Day & Walk-In Appts Available

Armas Financial Services

I can help with your:

- Medicare Advantage Plans
- Prescription Drug Plans
- Medicare Supplemental Plans
- Dental Plans & Vision Plans
- Life Insurance & Final Expense

NO-Cost Consultation with NO Obligation to Enroll

Angie Armas
808-382-6290
8am - 5pm
94-210 Pupukahi St. Ste. 203, Waipahu

Funeral Photo & Video Services
"Preserve memories of the love shared, the stories told, & the legacy of loved ones."

Photography ♥ Videography
Memorial Slideshow ♥ Drone

- ★ Earn rewards for referrals
- \$150 for every successful photo AND video referral.
- \$100 for every successful photo OR video referral.

Rewards require a minimum 4-hour booking.

Jerome Adarna Jr.
(808) 342-7508
Jerome@visionaryviewsllc.com

www.visionaryviewsllc.com/funeral

CARE CHIROPRACTIC
Dr. Tiffany Nguyen
Healthy Living for the Entire Family

Back & Neck Pain • Work & Sports Injuries • Vehicle Accidents • Mobility Issues • Headaches

Family Chiropractor
(808) 376-0300
HMAA, HMSA, VA, Devoted, United Health Care, Humana, and more...

New Patient Special!
\$79 Exam, X-rays, & Report

Shafer's Roofing
Cont. Lic. #BC-32095 • Fully Insured & Bonded

- Photovoltaic
- Residential Re-roofing
- Rain Gutters
- Roof Vents
- Roof Gardens
- Skylights
- Solar Shingles
- Solar Fans
- Service & Maintenance Programs
- Long Term/Extended Warranties
- Flexible Financing

Bernadette Shafer Robins
President & RME Since 2000

In Loving Memory of Sam Shafer

Discount for Seniors & Parish Members
Residential • Commercial • New Construction
Proudly serving Hawaii for over 30 years

www.shaferroofing.com
(808) 688-9082 • FREE ESTIMATES!

HAWAII SOCCER ACADEMY
EST. 2019

LOCATED IN WEST OAHU!

Youth Soccer for Boys & Girls ages 5-15

Competitive Teams, Recreational Teams, Clinics and Camps

808-225-4407
hisocceracademy.com

Accepting Players all year round!

"Then I heard the voice of the Lord saying, Whom shall I send? Who will go for us? Here I am; I said; Send me!"
Isaiah 6:8

JOHN RIGGINS REAL ESTATE
808-341-0737 • john@johnriggins.com • 379 Kamehameha Hwy, Ste H, Pearl City, HI 96782

Professional Image
PRINTING • COPYING • GRAPHICS
Making Hawaii Look Good In Print

- ◆ Color Copies
- ◆ B/W Copies
- ◆ Bindery/Finishing
- ◆ Litigation Copying
- ◆ Document Scanning
- ◆ Offset Printing
- ◆ Mounting, Laminating
- ◆ Oversize B/W & Color
- ◆ Graphic Design
- ◆ CD, DVD, USB Duplication
- ◆ U.S. Postal Service Partner

KAPOLEI MARKETPLACE • 590 FARRINGTON HWY
MON THRU FRI: 8AM-7PM • SAT: 9AM-4PM
TEL: (808) 674-8388
KAPOLEI@PROIMAGEHAWAII.COM

Professional Image
PRINTING • COPYING • GRAPHICS
Making Hawaii Look Good In Print

KAPOLEI MARKETPLACE • 590 FARRINGTON HWY
MON THRU FRI: 8AM-7PM • SAT: 9AM-4PM
TEL: (808) 674-8388
KAPOLEI@PROIMAGEHAWAII.COM

SECOND COLLECTION

January 24-25, 2026

CHURCH IN LATIN AMERICA & BLACK & INDIAN MISSIONS

PARISH ADMINISTRATION

Director of Religious Education *Bonnie Boquer*
 Office Coordinator and Youth Ministry Coordinator *Keahi Teson*
 Administrative Assistant *Tere Hunt*
 Accountant *Lucy Pascual*
 Custodian/Housekeeper *Marilou Anacan*
 Groundskeeper *Joemarie Anacan*

—2nd Collection Next Week—

The Black & Indian Mission Collection is a Catholic initiative aimed at supporting local African American and Native American communities in U.S. Its purpose is to administer a national collection—the first of its kind in the U.S.—to support representation of missionary work.



Pope Leo's January Intentions

Let us pray that praying with the Word of God be nourishment for our lives and a source of hope in our communities, helping to build a more fraternal and missionary Church.



CHRISTMAS ORNAMENTS

We are now returning the personalized ornaments that you helped adorn on our Christmas tree! Please pick them up from boxes left in the Multi-Purpose Room. Mahalo and until next year!

Legend:

BAI Back Area Inside Church
 BSC Blessed Sacred Chapel
 FA Front Area of church
 LA Lanai
 MPR Multi-Purpose Room
 WS Worship Space

For Mass Intentions:

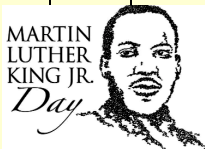
+ Repose of Soul
 C Conversion
 HB Birthday
 H Health
 HG Healing
 M Memorial of Passing
 R Retirement
 SP Special Intention
 TG Thanksgiving
 WA Wedding Anniversary



PLEASE write legibly on Mass Intention envelopes, otherwise the names for your intended will be inadvertently misspelled. Mass Intentions are reflected on the days Father celebrates Mass. Your intentions will be offered on the dates indicated. When a requested date is unavailable, or if it falls on a Solemnity, it will be offered at the next available Mass. Please note that your regular tithes are separate from requested Mass intentions. We appreciate any \$ amount for your Mass offering, and even more grateful when date assigned is a last minute request!

Mass INTENTIONS

& SCHEDULE OF THE WEEK

Mon	1/19	8AM	MASS <i>Bernie Teson (HB)</i> Legion of Mary Rosary Making (MPR) OFFICE CLOSED
			
Tues	1/20	8AM 1:30P 5PM 7PM	MASS <i>Sue Kidron (HB)</i> Food Pantry (LA/MPR) Legion of Mary Meeting (WS) Young Adults Meeting (MPR)
Wed	1/21	11AM 6:50P 7PM	Funeral Service ⇒ +Antonio Boquer, Jr. Novena to Our Lady of Perpetual Help MASS <i>+Antonio Boquer, Jr.</i>
Thurs	1/22	8AM 5:30P 7PM	MASS <i>Kaui, Aiden & Rose (SP)</i> Finance Council Meeting (MPR) Bible Study (MPR)
Fri	1/23	8AM 11:30A	MASS <i>+Leonardo Legayada</i> Funeral Service ⇒ Rosa Pascua
Sat	1/24	3:30P 3:45P 5PM	Rosary-Making Ministry (MPR) CONFESSION MASS <i>+Elizabeth Park</i> <i>+David A. Fortier (M/HB)</i> <i>+Clementina Salas Fisher</i> <i>Boquer Family (HG)</i> <i>Ray Datzman (HB)</i> <i>Doreen Campbell (HG)</i>
Sun	1/25	7AM 9AM 11AM 12PM 5PM 6:15P	MASS <i>+George Servino</i> <i>+Tony Boquer, Jr.</i> <i>+Clementine Fisher</i> <i>Iris Joan Arcala (HB)</i> <i>Nico Reyes (HG)</i> MASS <i>+Bernadette Ramsey (M)</i> <i>+David Salvador (M)</i> <i>Lorie & Paul Defiesta (SP)</i> <i>Viloria Family (SP)</i> <i>Josie & Clarke Antonio (SP)</i> <i>Veronica Cabatu (SP)</i> <i>Cecelia Hinds (H)</i> MASS <i>+Constante Bolante</i> <i>+Pedro & Ildelfonsa Fernando</i> <i>+Gloria Nicolas (M/HB)</i> <i>Gerardo & Nenita Almazan (WA)</i> Religious Ed (MPR/BSC) MASS <i>The People of St. Jude</i> Development Committee (MPR)