

Saint Mary's Rectory

83 Central Street, Foxborough, Massachusetts 02035 • (508) 543-7726

September 4, 2025

My Dear Friends in Christ,

It is a pleasure to write to you to share St. Mary's financial statements for the fiscal year ending June 30, 2025, and in addition to request your participation in our Parish's Grand Annual collection.

It has been my joy and honor to live and serve among such wonderful people. We are so blessed to have a thriving church family here at St. Mary's.

As we review the financial statements, I am happy to say that notwithstanding the major repairs we have encountered during the fiscal year, the parish had a net income of \$17,144. You will note in the financial statements that Contributions, Maintenance Costs and Capital Expenditures (which we are required to report as an expense by the Archdiocese) have all increased this year. The major repairs, which you have probably seen, included replacement of the church roof and repair and resealing of the asphalt parking lots. These projects were made possible as the result of two significant donations for which we are very grateful. The church roof and other projects were funded from the estate of a very generous anonymous benefactor who remembered St. Mary's in their final wishes. The asphalt project was funded by a very generous Parish family who came forward to cover the entire cost of that project.

Years of deferred maintenance, while we have worked hard to just cover our operating expenses, has resulted in various other projects that we would like to try to address in future years. Projects under consideration include renovating the pews in the church, necessary renovations to the kitchens in both the church and the rectory as well as the bathrooms in the lower church, just to name a few. Our Grand Annual collection historically helps us cover operating expenses but not these kinds of projects, which typically have to be funded by these one-time generous donations as noted above. One manner of donating in this way is through estate planning. We have included in this mailing a flyer which details how you can help St. Mary's Parish in this way for those who may be interested.

St. Mary's Cemetery has experienced a Net Loss for Fiscal Year 2025 of (\$3,630.00). As you may recall, last year we made a significant investment to build the Columbarium, in a beautiful location in the cemetery. If you have not seen it yet, I would encourage you to visit. We have also included in this mailing a flyer related to the sale of niches in the Columbarium.

Please know that with the guidance of the Finance Committee, we are making every effort where possible to keep total expenses within budget. At the same time, I am asking for your help. I am fully aware of the financial pressures that many families are experiencing, but your contributions to St. Mary's Parish via The Grand Annual Collection are so vital to the welfare of Our Church.

We have also included a flyer for online giving for your convenience. This consistent income stream from recurring gifts online helps the parish immensely, especially in the summer months when so many of you are away enjoying time with your families. Please consider enrolling in this program and we want to thank those of you who are already enrolled.

Now I ask once again this year to prayerfully consider continuing the great work that the Lord has done in Foxboro by giving what you can to the Grand Annual Collection, which will occur the weekend of September 27-28, so that we may continue to be a vibrant community under the guidance of the Holy Spirit.

On behalf of the Parish Finance Committee, the staff and myself, thank you for your continued generosity toward the financial life of St. Mary's Parish.

May God Bless You all.

Father Kevin T. Healy

Roman Catholic Archbishop of Boston, a Corporation Sole
 St. Mary's Parish
 As of June 30, 2025

Entity:

St. Mary's Parish Foxborough

	Year To Date 6/30/2025	Prior Year To Date 6/30/2024	Year To Date 6/30/2025	
	Actual	Actual	Period Diff	Period % Var
Revenue and Other support				
Collections	530,134	538,946	(8,812)	(2) %
Catholic Appeal	4,395	7,790	(3,395)	(44) %
Contributions, Bequests & Grants	198,148	122,061	76,087	62 %
Tuition and Fees	25,885	26,964	(1,079)	(4) %
Sacramental Offerings	41,114	47,585	(6,471)	(14) %
Other Revenue	13,967	12,322	1,645	13 %
Christmas Fair	41,243	38,050	3,193	8 %
Total Revenue and Other support	854,886	793,718	61,168	8 %
Expenses				
Salaries & Benefits				
Lay Salaries	291,638	296,244	(4,606)	(2) %
Lay Benefits	37,202	36,794	408	1 %
Total Salaries & Benefits	328,840	333,038	(4,198)	(1) %
Clergy Stipends & Benefits				
Clergy Stipends	68,330	80,996	(12,666)	(16) %
Clergy benefits	38,198	46,964	(8,766)	(19) %
Total Clergy Stipends & Benefits	106,528	127,960	(21,432)	(17) %
Office Expense	45,859	41,789	4,070	10 %
Insurance expense	37,522	36,607	915	2 %
Facility/maintanance costs	53,647	37,690	15,957	42 %
Utilities	60,423	53,451	6,972	13 %
Household	16,163	18,273	(2,110)	(12) %
Capital Expenditures	86,519	32,902	53,617	163 %
Other Expense	60,989	66,632	(5,643)	(8) %
Pastoral/ Liturgical	41,282	60,030	(18,748)	(31) %
Total Expenses	837,772	808,372	29,400	4 %
Net Income/Loss	17,114	(14,654)	31,768	

Balances as of 6/30/25:

Parish Checking Account \$19,366

Parish RCAB Savings Account: \$243,062

St. Mary's Parish - Cemetery
Profit & Loss Prior Year Comparison
As of June 30, 2025

	Year to Date 6/30/2025	Year to Date 6/30/2024	Year to Date 6/30/2025	
	Actual	Actual	Period Diff	Period % Var
<u>Cemetery Income</u>				
Sale of Lots	43,275	47,300	(4,025)	-9%
Openings	35,400	51,950	(16,550)	-32%
Foundations & Concrete Burial Units	28,266	38,338	(10,072)	-26%
Interest & Market Gain (Loss) on Investment	15,816	24,365	(8,549)	-35%
Misc Income	3,011	2,307	704	31%
Perpetual Care Receipts	6,525	8,600	(2,075)	-24%
Total Income	132,293	172,860	(40,567)	-23%
<u>Cemetery Expenses</u>				
Operating Expenses Contract	84,976	93,503	(8,527)	-9%
Concrete Burial Units	4,900	8,640	(3,740)	-43%
Facilities Maintenance & Utilities	238	2,664	(2,426)	-91%
Payroll Expense	45,809	29,167	16,642	57%
Misc Expense	0	8	(8)	0%
Capital Expenditures	0	81,312	(81,312)	0%
Total Expense	135,923	215,294	(79,371)	-37%
Cemetery Net Income (Loss)	(3,630)	(42,434)	38,804	

Balances as of 6/30/25:

Cemetery Checking Account	\$11,227
Cemetery Common Investment Fund	\$227,544
Cemetery RCAB Savings Account	\$58,218

Parish Finance Committee Members:

George Bell
Robert Bubencik
William Buckley
Steve Burlone
Sue Burlone
Mike Saegh
Roxanne Webster

SACRED SPACE, SACRED MEMORY

COLUMBARIA AT ST MARY'S



SACRED SPACE

As cremation becomes more common, a St. Mary's Columbarium allows for the interment of ashes of your loved one to rest within the sacred space of our blessed cemetery in accordance with Canon Law.

STEWARDSHIP

Columbaria promote good stewardship of our environment. Burials involve toxic embalming chemicals and the use of limited land. A columbarium opens opportunity to remain within St. Mary's Cemetery.

FINANCIAL IMPACT

According to the National Funeral Directors Association in 2021, the cost for cremation funerals was around \$2500 less than the cost for traditional burial funerals (which include a casket, headstone, etc.).

Did You Know?

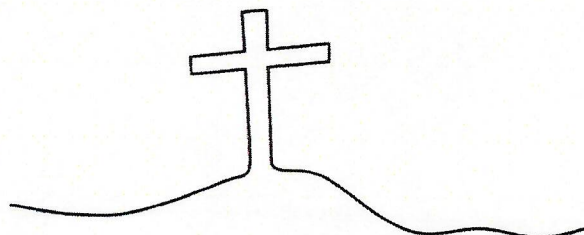
We have three columbarium units, each consisting of 24 niches. Each niche can be purchased for an individual, 2 people, or we also offer a row allowing up to 3 urns for a family grouping. Since The Church does not allow for scattering of ashes, these beautiful granite structures provide the reassurance and knowledge that your loved one is truly blessed and laid to rest within the Holy Ground of St. Mary's Cemetery.

Who Should I Contact?

For more information, please reach out to Nicole Davin at St. Mary's.

NDAVIN@STMARYSFOXBORO.ORG

(508) - 543 - 7726





CATHOLIC LEGACY SOCIETY

ARCHDIOCESE OF BOSTON

100% of the proceeds will go to St. Mary's Parish, Foxborough, but the Archdiocese of Boston helps with the paperwork.

Do you want to thank God for all He has given you in your lifetime?

Do you care about ensuring that the Catholic values you live and believe will continue to radiate well into the future?

Do you want to ensure St. Mary's Parish remains healthy and strong?

Consider making a planned gift!

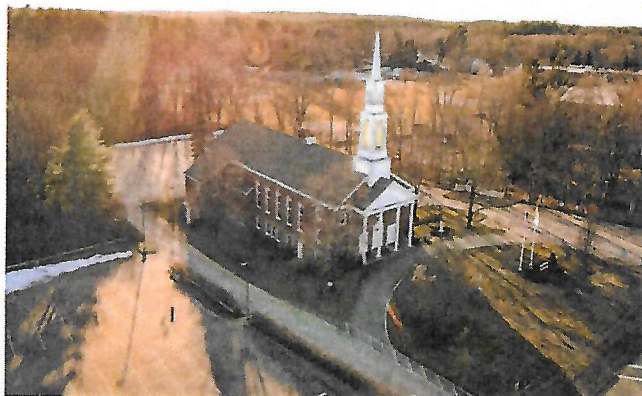
A planned gift is a future gift from your assets that you can easily make through your will, trust, life insurance policy or retirement account.

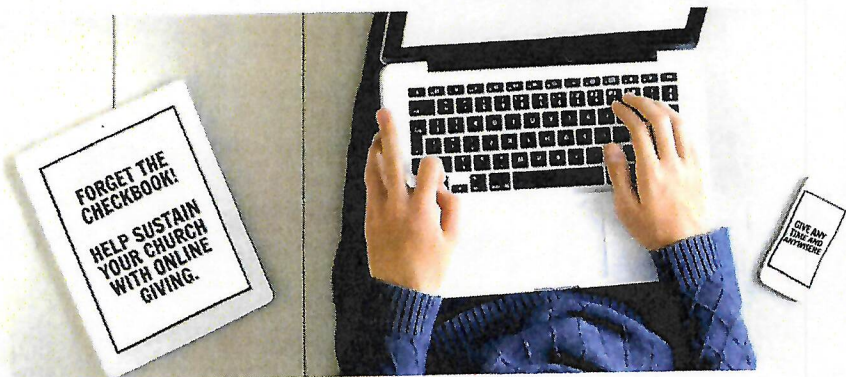
A planned gift supports the future of St. Mary's while allowing you to receive life income and other tax advantages.

For more information go to:
catholiclegacysociety.org or scan:



For questions contact **Lynne Sullivan**, Director of the Catholic Legacy Society, at 617-779-3747 or lynne_sullivan@rcab.org





Our Parish is now offering Online Giving. For additional information, or to sign up, visit our website at

www.stmarysfoxboro.org



**St. Mary's Parish
83 Central St.
Foxborough, MA 02035
508-543-7726
www.Stmarysfoxboro.org**