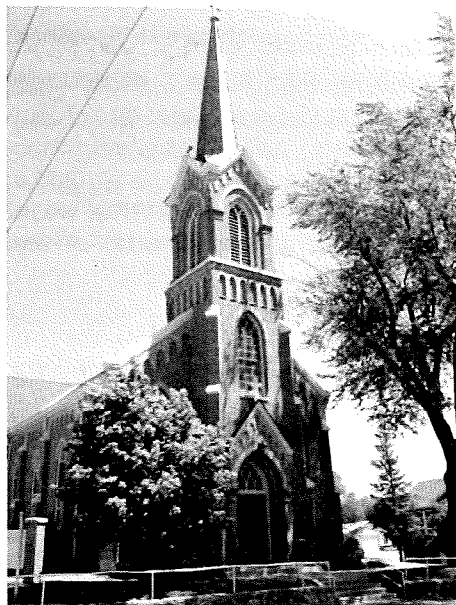


22ND SUNDAY IN ORDINARY TIME

SEPTEMBER 2, 2018

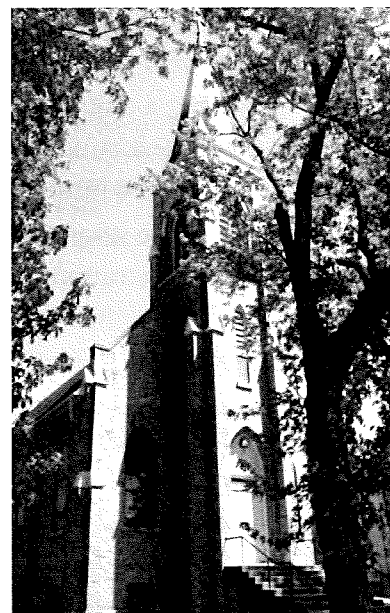
All are Welcome!



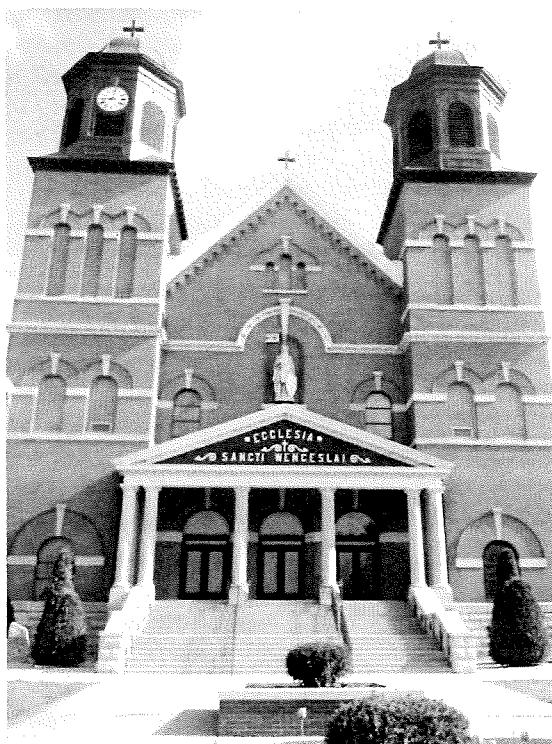
St. John the Evangelist

Parish Mission Statement

We are a Catholic community forming disciples of Jesus Christ dedicated to loving God through our worship, sharing the Good News, and loving service to others.



St. Scholastica



St. Wenceslaus

NEW PRAGUE AREA CATHOLIC COMMUNITY
Three Sites of Worship, One Community of Faith

**Including St. Wenceslaus &
The Western Catholic Community of St. John the Evangelist and St. Scholastica**

215 MAIN STREET EAST ■ NEW PRAGUE, MN 56071 ■ 952-758-3225 ■ NPCATHOLIC.ORG

We welcome you...

Welcome to the greater New Prague Area Catholic Community which includes the Church of St. Wenceslaus and the Western Catholic Community of St. John the Evangelist and St. Scholastica. We are happy you are here. Should you be visiting just for today, WELCOME! If you are seeking a church home, we would be honored to have you consider joining our faith community. If you are interested in a membership, please phone the parish office for assistance and registration. If you are over the age of 21, we ask that you register. Please feel free to stop by the parish office during office hours to register or you may do so online. Again, we are happy you are here.

At the Church of St. Wenceslaus

PARISH OFFICE HOURS

Monday – Friday 8:30 am to 4:00 pm

MASS SCHEDULE

Weekend Masses

Saturday..... 5:00 pm
Sunday..... 8:30 & 10:30 am

Morning Word & Communion

Monday & Tuesday 8:00 am

Weekday Masses

Wednesday, Thursday & Friday 8:00 am

SACRAMENTS & OTHER INFORMATION

Anointing of the Sick

Available to those who are seriously ill or suffering from a prolonged illness. Call 952-758-3225

Confirmation

Preparation required. Call 952-758-0477

Reconciliation

Saturdays at 4 pm in the church.

Baptism

Preparation required. Call 952-758-3225

Marriage

Six months to one year preparation time required.
Call 952-758-3225

Rosary

Monday – Friday 7:30 am & Saturday 8:00 am in the church.

Fatima Prayer Cell

Monday – Wednesday after 8 am service in the chapel.

Adoration

Friday 9:00 am to midnight in the chapel

Early Morning Scripture Study

Wednesday 6:45 to 8:00 am – In Parish Office.

Fr. Kevin's Bible Study

Saturdays 8:30 to 10 am – Pius X Room in church basement.

Prayer Chain

Judy: 952-758-2220 or Arnita: 952-758-4943

From the Desk of Laura Schoenecker

An Adventure!

We have been talking a lot lately about your personal relationship with Jesus... sounds wonderful, but also a bit elusive... how do we have a personal relationship with God? After all ~ he's GOD!

We all have access to God through his Son, Jesus... so how do we develop that relationship with Jesus? Good Question! After all, this should be THE MOST IMPORTANT relationship we have.

I have just finished a book that lays out some beautiful ways available for us to encounter Jesus. In the final chapter of the book, the author states:

He's the one with you on the journey ~ your companion on this journey we call life. He's the one who loves you beyond compare and wants to be with you at every twist and turn. Jesus is the Word made Flesh, dwelling among us, residing within us, drawing us ever closer to relationship with him.

- ⊕ *How can you get to know him? Journey with him in prayer, lifting up your broken, confused, muddled heart and sharing the very depths of your soul with his pure and perfect heart.*
- ⊕ *How can you get to know him? Journey with him through the Bible, taking in the Word to get to know the Word, seeing his life and recognizing that he is not a distant character in some ancient tale, but someone who knows and relates to what you experience.*
- ⊕ *How can you get to know Jesus truly? Journey with him in the grace of the sacrament, receiving his very Body and Blood and being washed in his abundant mercy, forever changed by this most intimate and perfect encounter with him.*
- ⊕ *How can you get to know this one who loves you perfectly and desires to be with you? Journey with him as you seek to give, serve, and respond to the needs of others, compelled by the encounter you have had with him.*

Excerpted from: Follow ~ Your Lifelong Adventure with Jesus by Katie Prejean McGrady. Copyright 2018 by Ave Maria Press, P.O. Box 428, Notre Dame, IN 46556. Used with permission of the publisher.

Jesus is patiently waiting to accompany you on your journey; ask him to tag along... you both will be glad you did!

Laura Schoenecker

Faith Formation Director

New Prague Area Catholic Community

Western Catholic Community

From the Desk of Deacon Bob

The American folk artist and icon, Pete Seeger, used to sing an old talking blues that went: "If you want to go to heaven, I'll tell you what to do, you gotta grease your feet in a little mutton stew. Slide right out of the devil's hand and ease over to the Promised Land. Take it easy! Go greasy!" If only going to heaven would be that easy.

The readings for today tell us that if we want to be heaven bound, it takes more than just scrupulously following the commandments. St. James urges his disciples to humbly welcome God's Word which has been planted in their hearts and by which their souls can be saved. He tells them to be doers of God's Word, not mere listeners. How to do this? St. James tells them to care for the vulnerable people (the widows and the orphans of James' time) and to not get caught up in the false doctrines of the world.

In the Gospel, Jesus criticizes the Pharisees' approach to the commandments. Jesus tells them that they are guilty of idolatry in so much as it is Mosaic Law they worship, not God, who gave humanity the Law. While they scrupulously follow the law, their intent in following the Law is false and twisted. Jesus tells them that they must dig deeper than the mere surface of the Law. To truly keep the commandments, they must discover the intent of God behind the Law, which is precisely the point St. James is making to his disciples.

Jesus' words ring true to us today. The Church has long taught that the intent behind our actions, including our reception of the sacraments is as important as receiving the sacraments. If we go to the sacrament of reconciliation and are not truly sorry for the sins we have committed, no absolution we may receive will absolve us from our sins. Baptism is more than just joining the Jesus club. When we baptize our children, we, as parents, must intend to do our very best to raise our children in the faith. The scriptures are clear that if we are to follow Jesus as his disciples, we must live the "spirit of the law", not just pay lip service to the law.

Deacon Bob Wagner

Pastoral Associate

New Prague Area Catholic Community

Important Information

Weekend Masses

Saturday	8:15 pm	St. Scholastica
Sunday	8:00 am	St. Scholastica
Sunday	10:00 am	St. John's

SACRAMENTS & OTHER INFORMATION

Baptism

Preparation required. Call the Parish Office.

Anointing of the Sick

Call the Parish Office.

Marriage

Prep required. Call the Parish Office.

Adoration

Fridays 9:00 am to midnight at St. Wenceslaus Daily Chapel

WESTERN CATHOLIC COMMUNITY OFFICE

20087 Hub Drive, New Prague 56071
952-758-4642

Deacon Bob Wagner

Pastoral Associate

952-758-3225 (O) 612-703-0808 (C)
Bob.Wagner@npcatholic.org

Hall Rental:

Patty Giesen 952-758-3008 or email:
kpgiesen003@gmail.com

Prayer Chain WCC:

Carol Bauer 952-457-4057
Noreen Giesen 952-758-2608
Marlene Dohmen 952-492-6879

Mass Schedule Volunteers - St. John's & St. Scholastica

September 8 & 9, 2018	Saturday St. Scholastica 8:15 PM	Sunday St. Scholastica 8:00 AM	Sunday St. John's 10:00 AM
Lector	Jim Widmer	Marlene Dohmen	Jean Boehmke
Eucharistic Ministers	Kevin Giesen	Ann Prochaska, Becky Colwell & Gary Odenthal	Amy Lemke, Gloria Lemke & Lori Wooten
Servers	Trenton Huebl & Leo Pexa	Steven & Megan Odenthal	Carter, Maddie & Hailey Tupy, Teagan Lambrecht
Gift Bearer Family		Dan Prochaska Family	Tim Lemke Family

Bulletin E-mail: info@npcatholic.org
Website: <http://www.npcatholic.org>

PARISH AND AREA NEWS



Why clean your feather pillows?

A good feather pillow should last anywhere between 60 and 100 years and still be in good usable condition. A feather depends on its oil for its life and softness. Every time a pillow is washed or steam cleaned, the feathers lose between 10 and 15 years of usefulness because they are stripped of oil. Carlson Pillow Cleaning uses a machine that will clean and deodorize the feathers without removing any of their oil. It will also kill germs using ultra-violet light. The feathers you receive back will be your own, cased in a new ticking cover of your choice. Carlson Pillow Cleaning is returning on Sat., Sept. 8th from 7 am-1 pm in the Parish Activities Center, with early drop off Friday evening from 4-7 pm in the PAC. New custom made pillows and comforters also for sale. Call (952) 758-0477 for more information. Proceeds benefit St. Wenceslaus Youth ministry.

PEACE CENTER HARVEST CAMPAIGN

For many food shelves and those who use their services regularly, finding fresh produce can be a challenge. Please join Peace Center during August and September to collect fresh produce from your garden for those who need it most. Peace Center is open Mondays, Wednesdays, and Fridays from 9 am-12:30 pm and Thursdays from 4:30-6:30 pm. Monetary donations can also be dropped off or mailed to Peace Center, 313 Columbus Ave. N, New Prague.

Area Separated & Divorce Support Group

Area Separated & Divorce Support Group will meet Tues., Sept. 4 & 18, 7-8:30 pm, in the Parish Office Building. The topic will be "Reclaim Your Personal Power". If you or a loved one is experiencing the loss of a long-term relationship, married or unmarried, you may desire to connect with this group since they understand what you are going through at this time in your life. Questions? Please call Deacon Bob Wagner at (952) 758-0463 or Mary Pieper at (952) 873-6781.

Father Dave Barrett's Meet the Author Event

scheduled on Mon., Sept. 10th at the KC Hall has been postponed.

First Catholic Slovak Ladies Assn. Branch W001

will hold their quarterly meeting on Mon., Sept., 10th at 6:30 pm at 1st Bank & Trust Meeting Room.

Ladies of the Parish and CCW Members

Our meetings will start up again with the first one Mon., Sept. 17th at 7 pm in the church basement dining hall. The Southwest Deanery is having a Fall Institute on Sept. 13th at Holy Trinity Catholic Church in Waterville, beginning with Mass at 6 pm and Dinner at 6:45. **Men and Women are invited.** Please RSVP to Mary Wick at (507) 744-5154 by Sept. 5th to reserve a spot. Just a reminder to mark your calendars for our CCW Fundraiser, The Waffle Man



Breakfast Oct. 28th. The Council of Catholic Women is the unity of all Ladies of the parish. Please join us at our meeting.

Carpool to Savage? Contact Laura at (952) 758-5131 Join local author and speaker, Liz Kelly in an 8-week study based on her award-winning book, *Jesus Approaches: What Contemporary Women Can Learn about Healing, Freedom & Joy from the Women of the New Testament*. Past participants have called the study "the best women's study I've ever done," "really intimate, personal," "Inspiring and fresh," "I feel more deeply connected to all women and the gifts we all have." **Tuesday mornings, Sept. 18-Nov. 13** (No session on Oct. 23) 10-11:30 am, St. John the Baptist, Savage. Childcare offered.

Remember to Pray for Our Priests and Seminarians!

Pick up the September Prayer/Calendar, available on the credenzas in the back of church, with the names of priests and seminarians listed to pray for daily.

Weekend Help Wanted:

We are in need of a weekend custodian to make sure the church is open and ready for weekend activities and Masses. The work is on Saturday evenings and Sunday mornings until early afternoon. Wages are competitive. If interested, please contact Peter Guzulaitis at (952) 758-3225 or at peter.guzulaitis@npcatholic.org.

Our Lady of the Prairie Fall Festival/Block Party

When: Sat., Sept. 8th from 2-11 pm

Where: Our Lady of the Prairie, Belle Plaine

The Festival Mass will be held at 4:15 pm with the Chicken Dinner serving from 5-7 pm. Dinner Tickets ~ Adults \$12, Children 3-12 \$6, Under 3 Free. Silent Auction, Kids Games, Food Stands, Blest Art, Corn Hole, Pet Show 2-3 pm, Bingo, Beer Garden, and live bands until 11 pm.

Healing Takes Time Fall Retreat

Join us Sept. 14-16 for an Interdenominational Retreat at The Franciscan Retreat & Spirituality Center in Prior Lake. This retreat is an uplifting experience to help those who are suffering from the loss of a loved one to find hope

SUPPORT OUR PATRONS

who make this bulletin possible by their advertising.
ROUNDBANK

and healing in their grief journey. Breakout sessions will be held and led by those who have experienced the same loss and understand exactly what you are going through. Sessions include: Loss of Child, Loss of Spouse, Loss through Suicide, Loss through Pregnancy or Infant Loss, Loss of Sibling/Parent. Keynote Speaker: Deb Hadley, Alexandria, MN. Retreat runs Friday evening 7 pm through Sunday morning 11 am. For more information or to register for the retreat, contact: Marlene Hunt at (507) 381-1177 or Email: marlenehunt53@gmail.com, Facebook: Hope United Grief Group

September Cursillo Ultreya

Western Ultreya will be held on Sun., Sept. 9th at St. Hubert Catholic Community in Chanhassen. The speaker will be Rhonda Zweber. Please join us at 7 pm in the North Fellowship Hall. Rosary will be prayed in the family room beginning at 6:30.



FAITH FORMATION AND YOUTH MINISTRY

Coming to a bookshelf and couch near you!

Check out this book club for teens:

Book 1: *Follow: Your Lifelong Adventure with Jesus* by Katie Prejean McGrady

Catholic author and speaker Katie Prejean McGrady shares sometimes embarrassing, often humorous, and always inspiring stories about how she came to know and love Jesus and shows you can, too, through prayer, scripture, sacraments, and service.

Book 2: *Tattoos on the Heart: The Power of Boundless Compassion* by Fr. Greg Boyle, SJ

From giant, tattooed Cesar, shopping at JC Penney fresh out of prison, you learn how to feel worthy of God's love. From Lulu, you come to understand the kind of patience necessary to rescue someone from the dark ~ as Father Boyle phrases it, we can only shine a flashlight on a light switch in a darkened room.

Meetings will begin in September; to reserve your spot and book, contact Pamela in the FF office at pamela.sherlock@npcatholic.org or (952) 758-0477 or sign up at <https://npacc.wufoo.com/forms/sitting-on-the-couch-book-club/>

Join Youth Ministry in a Special Opportunity on September 5th

Fr. Greg Boyle, acclaimed author of "Tattoos On the Heart" and "Barking at the Choir", will be in St. Paul for the Ignatian Volunteer Corps Annual Fundraiser. This is planned as a "meet me there" Youth Ministry event; nevertheless, if there is enough interest ~ perhaps a bus? Please RSVP if you are interested to Pamela in the FF office. The Rev. Gregory J. Boyle, S.J., is the founder of Homeboy Industries in Los Angeles, the largest gang intervention, rehabilitation and re-entry program in the world.

Stay Tuned for more information about this year's Confirmation and youth ministry HOOHA on Oct. 7th.

IMPORTANT MEETING FOR ALL FIRST-YEAR CONFIRMATION CANDIDATES AND THEIR PARENTS

Wed., Sept. 26th from 6:30-7:30. Contact Pamela for more information or any questions at pamela.sherlock@npcatholic.org or (952) 758-0477.

Save the Date for AYD 2018 ~ October 27

Contact Pamela in the FF office for more information ~ pamela.sherlock@npcatholic.org or (952) 758-0477. archspm.org/AYD



SCHOOL NEWS from SWS

Little Saints Preschool at St. Wenceslaus Catholic School is happy to announce a new grant for preschool families to enroll in Catholic Preschools. This grant gives you \$500 to \$3,000 to pay tuition this year. We have only 10 openings for the upcoming school year. School starts soon so make your application now. Enroll in our 3-5 day classes at <http://www.swsaints.org>

Find the scholarship application at schulzefamilyfoundation.org.

To be eligible, your child:

€ Will be attending a Catholic preschool at an eligible preschool AND

€ Will be in their last year of preschool and attending kindergarten the following year

Your family:

€ Is a middle-income family

€ Needs this scholarship to be able to enroll your child in a Catholic preschool

The Schulze Early Learning Scholarship application is online at schulzefamilyfoundation.org. Click on Early Learning Scholarships.

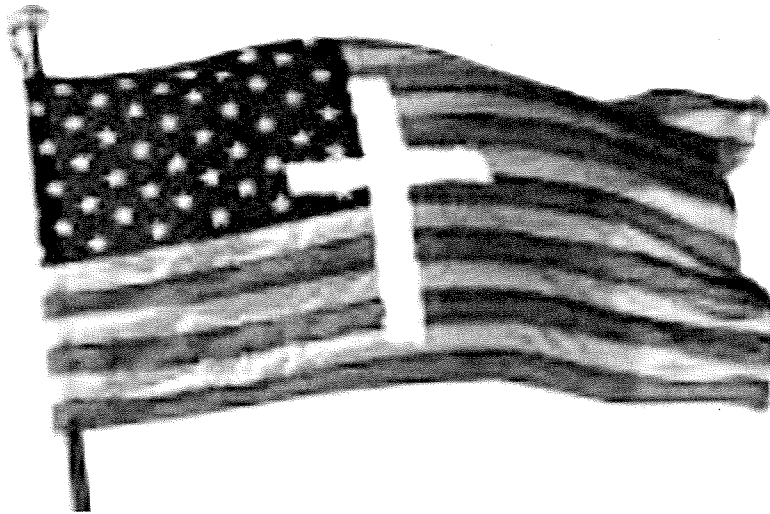
WESTERN CATHOLIC COMMUNITY St. John's & St. Scholastica

Green Response Sheets

If you have not already done so, please send your green response sheet to Fr. Kevin by Sept. 4th by mail or drop it off at the parish office. Your response is very important for the future of our church building! It is also important for you to sign the response with your name for it to be counted. Only Fr. Kevin will know how you responded. Keep the follow-up meeting on your calendar for Sept. 12th at the KC Hall in New Prague.

Patriotic Rosary ~ Sun., Sept. 9th at 6:30 pm

This traditional Rosary will be prayed at St. John the Evangelist Catholic Church at 6:30 pm. We invite all to celebrate this great tradition especially our military and veteran families! As we recite this Rosary together, we will pray for our legislators, senators, and all in government to fight for religious freedom, the right to live, as well as support and respect for our soldiers and veterans. Everyone is welcome!



All are invited, especially our military and veteran families,
to participate in the beautiful reciting of the

PATRIOTIC ROSARY

Sunday, September 9th at St. John's Church, Union Hill.

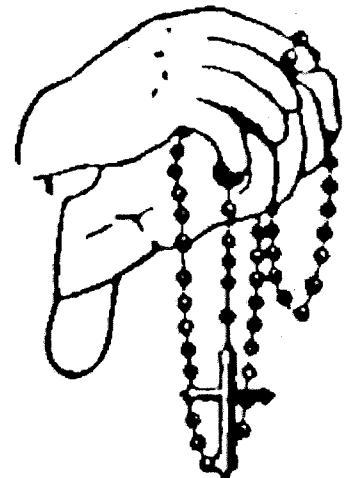
Come early to enjoy songs to our Blessed Mother,

The Rosary will begin at 6:30PM

Inspired by Our Lady of Medjugorje,
the Patriotic Rosary is a powerful prayer
and experience for divine protection and mercy
for our Nation.

Our Lady beckons us, calling us to be a light for
all nations, that peace may reign throughout the
nation, beyond all stately boundaries.

Join us for this united intercessory prayer event
to our Holy Mother, Mary.



Sponsored by:
Catholic United
Financial



LITURGIES & PRIEST'S MASS INTENTIONS

INCLUDES ALL CHURCH LOCATIONS
WEEK OF SEPTEMBER 3-9, 2018

Rosary at St. Wenceslaus
MONDAY – FRIDAY at 7:30 am
SATURDAY at 8:00 am

Monday, September 3 – Labor Day

8:00 am.....**No Word & Communion – SW**

Tuesday, September 4

8:00 am..... Word & Communion – SW

Wednesday, September 5

8:00 am..... Rosella Riesgraf – First SWS Mass – SW

Thursday, September 6

8:00 am..... Mass – SW

Friday, September 7

8:00 am..... Mass – SW

Saturday, September 8

4:00 pm..... Confession – SW

5:00 pm..... Jean Wagner – Mass – SW

8:15 pm..... Mass – SS

Sunday, September 9

8:00 am..... Jim Kroyer, Gary Glisczinski,

..... Bob Hauer – Mass – SS

8:30 am..... Mass – SW

10:00 am..... Steven & Mary Elizabeth Busch

..... Mass – SJ

10:30 am..... Edwin & Martha Hrabec,

..... Dr. James O'Rourke, Leo, Alyce & Michael Mamer,

..... Emil & Helen Jirik, Francis & Adeline A. Busch

..... Mass – SW

STAFF DIRECTORY NEW PRAGUE AREA CATHOLIC COMMUNITY**Rev. Kevin Clinton**

Pastor

952-758-3225

Kevin.Clinton@npcatholic.org

Deacon Bob Wagner

Pastoral Associate

952-758-0463

Bob.Wagner@npcatholic.org

Peter Guzulaitis

Parish Business Administrator

952-758-0465

Peter.Guzulaitis@npcatholic.org

Ruth Weinandt

Parish Accountant &

Pastoral Ministry Associate

952-758-0466

Ruth.Weinandt@npcatholic.org

Laura Schoenecker

Faith Formation Director

Pre-K through Adult

952-758-5131

Laura.Schoenecker@npcatholic.org

Pamela Sherlock

Youth Ministry & Confirmation Coordinator

952-758-0477

Pamela.Sherlock@npcatholic.org

Mary Higgins

Adult Faith Formation Associate

952-758-0464

Mary.Higgins@npcatholic.org

Kim Doyle

St. Wenceslaus School Principal

952-758-3133

Kim.Doyle@swsaints.org

Jolene Busch

Preschool Director

952-758-0480

Jolene.Busch@swsaints.org

Debbie Gregor

Director of Liturgical Music at SW

952-758-4207

Debbie.Gregor@npcatholic.org

Lisa Levenson

Parish Administrative Assistant

952-758-3225

Lisa.Leverson@npcatholic.org

PARISH BUSINESS OFFICE

215 Main St E, New Prague, MN 56071

PH 952-758-3225 FAX 952-758-2960

FAITH FORMATION OFFICE

On campus in Parish Activity Center

ST. WENCESLAUS SCHOOL

227 Main St E, New Prague, MN 56071

PH 952-758-3133 FAX 952-758-2958

LITTLE SPIRITS PRESCHOOL

On campus of SWS ~ 1950's building

952-758-0480

MAINTENANCE DEPARTMENT

952-758-2327

MEETINGS & EVENTS CALENDAR

WEEK OF SEPTEMBER 3-9, 2018

Monday, September 3:

Parish Office Closed ~ No School

Tuesday, September 4:

Preschool ¾ Class Parent/Child Day, 9-10 am

Separated & Divorce Support Group,

6:45-8:30 pm – Parish Office

– Deacon Bob's Office

Wednesday, September 5:

First Day of Pre-K A/B

Early Morning Scripture Study, 7-8 am

– Parish Office Dining Room

Morning Scripture Study, following 8 am Mass

– Parish Office Dining Room

Thursday, September 6:

First Day of 3/4 Preschool Class

Friday, September 7:

Adoration, 9 am-midnight – Daily Chapel

Pillow Cleaning Drop Off, 4-7 pm – PAC Foyer

Saturday, September 8:

Prep & Serve Meal at Dorothy Day Center

– St. Paul

Pillow Cleaning, 7 am-1 pm – PAC Foyer

Scripture Review w/Fr. Kevin, 8:30-10 am

– Pius X Room, Church Basement

Sunday, September 9:

No Events

SCRIPTURE READINGS

WEEK OF SEPTEMBER 3-9, 2018

**Monday, September 3:**

1 COR 2:1-5 / LK 4:16-30

Tuesday, September 4:

1 COR 2:10B-16 / LK 4:31-37

Wednesday, September 5:

1 COR 3:1-9 / LK 4:38-44

Thursday, September 6:

1 COR 3:18-23 / LK 5:1-11

Friday, September 7:

1 COR 4:1-5 / LK 5:33-39

Saturday, September 8:

MI 5:1-4A / MT 1:1-16, 18-23

Sunday, September 9:

IS 35:4-7A / JAS 2:1-5 / MK 7:31-37

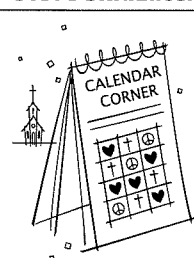
**CHURCH OF ST. WENCESLAUS
CALENDAR CORNER**

Thank you to the Following Sponsors:

CHART,

Pizza Ranch &

Steve Skluzacek Construction, Inc.

**Date:**

Aug. 29, 2018

Number:

1110

Winner:

Marvin &

Mary Kubes



<p>Patty's Place</p> <ul style="list-style-type: none"> • Specialty Coffees • Fresh Pastries • Hand Dipped Ice Cream • Cake Decorating <p>108 E Main Street #1 New Prague 952-758-5808 Open 7 Days A Week</p>	<p>NPCL (New Prague-Costa-Louisville) Mutual Insurance Company 205 County Road 37 New Prague, MN 56071 952-758-5964 www.npclinsurance.com</p> <p>Competitive Rates for Farm & Home Since 1882</p>	<p>SKLUZACEK Cabinetry & Woodworking Dave Skluzacek • 612-986-8443 New Prague, MN</p> <p>TS Mechanical Inc. New Prague, MN 952-755-2956 scott@sjsmechanicalinc.com</p>	<p>First Bank & Trust 1101 1st Street SE, New Prague • 952-758-4491 BANkeasy.com MEMBER FDIC</p> <p>COMMITMENT TO GETTING RESULTS.</p> <p>Wornson Goggins NELSEN MORRIS BREYER P.C. 119 E. MAIN ST. NEW PRAGUE 952-758-4161 WWW.LAWYERSNP.COM</p> <p>BACK and NECK CLINIC of NEW PRAGUE Dr. Laurie A. Reiner Hughes Dr. Jeremy Tupy DOCTORS OF CHIROPRACTIC Located across from The New Prague Times 201 East Main Street 952-758-5135</p>
<p>Bruzek FUNERAL HOME Serving With Compassion Since 1903 Steve and Mary Frost Cremation & Funeral Planning 952-758-4949</p>	<p>Jon P. Colling, D.D.S. Thomas W. Smyth, D.D.S. newpraguedentist.com OFFICE HOURS MON-FRI NEW LOCATION! 211 Cty. Rd. 37 New Prague 952-758-2376</p>	<p>Edina Realty. Pat Sullivan REALTOR 952.457.0479 patsullivan@edinarealty.com www.edinarealty.com/pat-sullivan-realtor</p>	<p>MARQUARDT JEWELERS New Prague</p>
<p>Parkview Medical Clinic Daniel R. Berg, MD Michael P. O'Rourke, MD Jean Craig, MD Heather Hamernick, MD New Patients Welcome Same Day Appointments Available Saturday Morning Appointments www.parkviewclinic.com 952-758-2535</p>	<p>NEW PRAGUE AUTO REPAIR www.NewPragueAutoRepair.com Since 1974 Gary Kohoutek, Owner 952.758.4471 205 4th Ave. SW New Prague, MN 56071</p> <p>KUBES Custom Cabinets Wencel Kubes New Prague 952-758-2262</p>	<p>New Prague "Gentle Dental Care" Dr. Gregory R. Dvorak, D.D.S. Cosmetic & Sedation Dentistry 136 West Main Street, New Prague 952-758-3003 • www.drdivorak.com</p> <p>South Suburban Oral Surgeons Dr. Mark T. Roszkowski Dr. Richard T. Pihlstrom 115 1st Avenue SE, #110, New Prague, MN 952-758-2321</p>	<p>BENDZICK MINI STORAGE Brand New Storage Facility Excellent Secure Location 1 Mile North of New Prague on Hwy. 21 507-334-3422</p> <p>STEFENI TUPY REALTOR® 952-486-3082 www.StefTupy.com Edina Realty. StefeniTupy@EdinaRealty.com</p> <p>Kneip & Associates INSURANCE medical dental life Daniel Kneip 952-758-3049 kneip.ins@gmail.com Committed to product understanding and personal service.</p> <p>NEW PRAGUE MINI STORAGE, INC. From 5x10 thru 10x40. Climate Controlled. Now Available. Easy access, 7 days a week, 24 hours a day www.NewPragueMiniStorage.com 952-758-7819</p>
<p>Ambroz Plumbing, Inc. Paul Ambroz New Construction - Remodel - Service 952-758-6265 • Cell 952-292-4413 Lic# 059407-PM</p>	<p>TUPY INSURANCE AGENCY, INC. For Your Personal or Business Insurance Needs We are here to Serve You! 111 East Main Street New Prague, MN 952-758-2433</p>	<p>The New Prague Times Reliable & Accurate Local News In Print Weekly and Online 24/7. newpraguetimes.com Call 952-758-4435 to subscribe.</p>	<p>SAXE CHEVROLET BUICK Matt Saxe 909 Enterprise Drive Belle Plaine, MN 56011 952-873-2234 www.saxechevy.com</p>
<p>MACH LUMBER Paul Kratochvil, Owner Convenient - We Deliver! 952-758-3235 M-F 7-5; Sat. 8-Noon 201 Second Ave. SW, New Prague 1 block S of Main St, across from ConAgra</p>	<p>Odenthal Landscaping Retaining Walls, Patios & Much More For All Your Landscaping Needs New Prague, MN www.odenthallandscaping.com Phone & Fax: 507-364-5460 Cell: 612-703-4803</p>	<p>YOU CALL... WE HAUL... Complete Household Transfer Licensed • Bonded Reasonable Rates TIM or JOHN 952-758-2552 16264 310 St. New Prague</p>	<p>Marlene Mushitz, CRS, GRI, CDPE 1301 1st St. NE New Prague 612-978-2222 www.DynamicMarlene.com</p>
<p>DOUG VAYDA Specialist in the practice of Orthodontics 101 Central Ave. New Prague 952-758-6999</p>	<p>KUBES REALTY 5% Commission 115 1st Ave. SE New Prague 952.758.9110 www.KubesRealty.com</p>	<p>NEW PRAGUE VETERINARY CLINIC Dr. William F. Vollmar Dr. Katie Vollmar Boarding Services 1003 East Main St. New Prague, MN 952-758-2881</p>	<p>AMERICAN FAMILY INSURANCE® Melissa Kreuser, Agent (952) 758-5460 1301 1st St. NE New Prague American Family Mutual Insurance Company and the Subsidiaries Home Office - Madison, WI 53783 ©2012 006441-912 mkreuser@amfam.com</p>
<p>Wacker Drywall, Inc. Hand Troweled Ceilings Roger Wacker Home: 952-758-8726 Cell: 612-978-9648 New Prague</p>	<p>SKLUZACEK CONSTRUCTION, INC. Steve Skluzacek, Owner #0004897 952-758-4158</p>	<p>Suel Printing Company Pleased to be the printers of your Parish Bulletin. 200 Main St. East, New Prague 952-758-4435 awann@suelprinting.com</p>	<p>NEW PRAGUE Dental Center "Dental care for the entire family" Jeremy Derksen, D.D.S. Kathleen J. Garry, D.D.S. 101 Lexington Ave. So. 952-758-4741</p>
<p>Positively Impacting Peoples' Lives Since 1881</p> <p>Roundbank® New Prague: 952-758-BANK (2265) • Farmington: 651-463-8300 www.roundbank.com</p> <p>Member FDIC EQUAL HOUSING LENDER</p>	<p>Place Your Ad Here! 952-758-4435</p>	<p>Quality appliances and service you can trust from your hometown appliance source</p> <p>40th Anniversary 1977-2017</p> <p>MAYTAG Whirlpool</p> <p>KitchenAid (952) 445-2916 Or online at MyApplianceSource.com On Hwy 169 in Shakopee We may be smaller...but we try harder</p> <p>my APPLIANCE SOURCE SALES • SERVICE</p>	
<p>For Sale Call 952-758-4435</p>	<p>Michael Traxler WEALTH MANAGEMENT, LLC Investments & Financial Planning Solutions</p> <p>Securities & Advisory Services offered through Michael Traxler Wealth Management, LLC a Registered Investment Advisor in the State of Minnesota.</p> <p>Michael P. Traxler Financial Advisor 222 Main Street East New Prague, MN 56071 952-758-8060</p>		