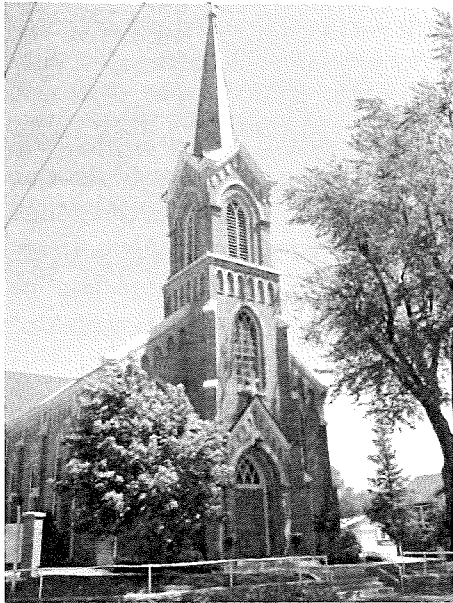


2ND SUNDAY IN ORDINARY TIME

JANUARY 20, 2019

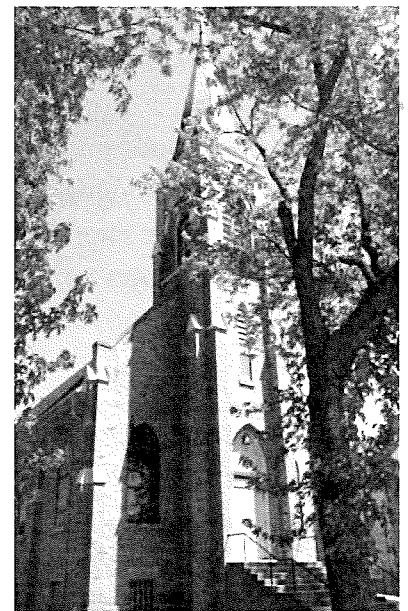
All are Welcome!



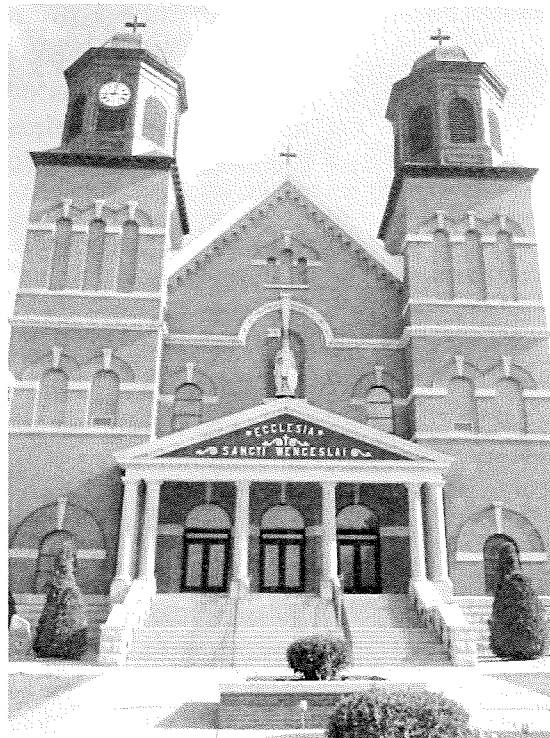
St. John the Evangelist

Parish Mission Statement

We are a Catholic community forming disciples of Jesus Christ dedicated to loving God through our worship, sharing the Good News, and loving service to others.



St. Scholastica



St. Wenceslaus

NEW PRAGUE AREA CATHOLIC COMMUNITY
Three Sites of Worship, One Community of Faith

**Including St. Wenceslaus &
The Western Catholic Community of St. John the Evangelist and St. Scholastica**

215 MAIN STREET EAST ■ NEW PRAGUE, MN 56071 ■ 952-758-3225 ■ NPCATHOLIC.ORG

We welcome you...

Welcome to the greater New Prague Area Catholic Community which includes the Church of St. Wenceslaus and the Western Catholic Community of St. John the Evangelist and St. Scholastica. We are happy you are here. Should you be visiting just for today, WELCOME! If you are seeking a church home, we would be honored to have you consider joining our faith community. If you are interested in a membership, please phone the parish office for assistance and registration. If you are over the age of 21, we ask that you register. Please feel free to stop by the parish office during office hours to register or you may do so online. Again, we are happy you are here.

At the Church of St. Wenceslaus

PARISH OFFICE HOURS

Monday – Friday 8:30 am to 4:00 pm

MASS SCHEDULE

Weekend Masses

Saturday..... 4:00 pm
Sunday..... 8:30 & 10:30 am

Morning Word & Communion

Friday..... 8:00 am

Weekday Masses

Monday-Thursday 8:00 am

SACRAMENTS & OTHER INFORMATION

Anointing of the Sick

Available to those who are seriously ill or suffering from a prolonged illness. Call 952-758-3225

Confirmation

Preparation required. Call 952-758-0477

Reconciliation

Saturdays at 3 pm in the church.

Baptism

Preparation required. Call 952-758-3225

Marriage

Six months to one year preparation time required.
Call 952-758-3225

Rosary

Monday – Friday 7:30 am & Saturday 8:00 am in the church.

Fatima Prayer Cell

Monday – Wednesday after 8 am service in the chapel.

Adoration

Friday 9:00 am to midnight in the chapel.

Early Morning Scripture Study

Wednesday 7:00 to 8:00 am – In Parish Office.

Fr. Kevin's Bible Study

Saturdays 8:30 to 10 am – Pius X Room in church basement.

Prayer Chain

Judy: 952-758-2220 or Arnita: 952-758-4943

BeFriends

Ann Schoenbauer: 952-758-3456 or

Lois Giesen: 952-758-2138

From the Desk of Father Theisen



Padre's Pen

For those who did not know, my call sign for most of my military career was "Padre." I guess it was easier and quicker to say than "Chaplain Theisen."

Let me begin today by saying "Thank you." I had forgotten how generous and kind civilian life can be for priests at Christmas time. I didn't keep as good of track of the many well wishes and gifts I received, so I may have missed some people with acknowledgements. From the bottom of my heart, "Thank you for your generosity and most of all for the gift of your lived faith."

Second, in consultation with the First Saturday Devotions Group, we have decided to celebrate First Saturday in conjunction with the Feast of the Presentation of the Lord (Candlemas Day). Therefore, there will be **Rosary** and **Mass** on **Saturday, February 2**. First Saturday Rosary Devotions will begin at **8:00 am** and **Mass (with blessing of candles)** will immediately follow (about **8:30 am**).

In Malachi 3:1 we hear, "I am sending my messenger to prepare the way before me; and suddenly there will come to the temple the Lord who you seek." Shortly after John the Precursor's birth, Jesus is born and according to Mosaic Law was presented in the temple 40 days after his birth. The Church sees this as at least an initial fulfillment of the Malachi prophecy. In the scriptural account of the Presentation, we hear the elder Simeon proclaim in part that the child is "... a light for revelation to the Gentiles, and for glory to your people Israel." Therefore, it is a feast we celebrate with lit candles to celebrate the light of Christ and we bless candles for the coming year. I invite you to join us for this Rosary and Mass on this day and bring any candles you may have and want blessed for use in your homes in the coming year.

By this celebration we hope that the light of Christ can be extended throughout the year in a real and tangible way in our Church and in our homes. And that the same light may spread in our culture, country, and world.

Rev. Eugene Theisen

Associate Pastor

New Prague Area Catholic Community

Western Catholic Community

From the Desk of Deacon Bob

The Wedding of Cana is more than just a Jewish wedding at which Jesus turned gallons of water into wine. It is the first of seven signs in the Gospel of John revealing the Divine nature and mission of Jesus. More importantly, it is the point of "no return" for Jesus, in which he makes known his Messianic Mission to our world. We hear this in his dialogue with his mother. When Mary tells him that there is no wine, Jesus answers her, "Woman, how does your concern affect me? My hour has not yet come." Mary replies by telling the servers, "Do whatever he tells you." In her own way, Mary is telling Jesus to quit stalling and do what he is suppose to do (We all need a little push from our moms from time to time).

It is significant that this miracle occurred at a wedding. For the Jewish people, marriage was symbolic of the covenant between God and the People of Israel. The prophets often speak metaphorically of God as the faithful groom and Israel as the bride, albeit unfaithful bride. For the Jewish people, the Kingdom of God, eternal life, was often described as a wedding feast in which everyone's hunger was satisfied and everyone drank wine to their heart's content. In light of the symbolic meaning of a wedding feast, it seems apropos that Jesus chose a wedding feast in which to first reveal his mission of ushering the Kingdom of God into our world.

All of this was not lost on the disciples of Jesus. Their eyes and their hearts were opened to what Jesus was doing. As in all of our lives, they had a decision to make. Were they going to make a leap of faith and go forward with Jesus on his mission into an unknown future? Or, were they going to play it safe and stay behind in the status quo of the past? At the conclusion of this Gospel story, the disciples make that leap of faith and go forward with Jesus.

The choice presented to the disciples is presented to us today. Jesus beckons us to join him. Will we play it safe and remain in the status quo of once was? Or, shall we boldly trust him, and with him usher the Reign of God into our world? It is our choice.

Deacon Bob Wagner

Pastoral Associate

New Prague Area Catholic Community

Mass Schedule Volunteers - St. John's & St. Scholastica

JANUARY 26 & 27, 2019	Saturday St. John's 8:15 PM	Sunday St. Scholastica 8:00 AM	Sunday St. John's 10:00 AM
Lector	MaryCarol Wolf	Megan Odenthal	Jessica Weckman
Eucharistic Ministers	Kevin Giesen	Millie Odenthal, Jenna Heimer & Ted Odenthal	Jill Holden, Dave Webb & Lori Wooten
Servers	Trenton Huebl & Leo Pexa	Sarah Colwell & Julia Schoenecker	Brenna & Samantha Solheid, Mitchel & Hunter Pomije
Gift Bearer Family		Karen Odenthal Family	Tom Fahey Family

Important Information

Weekend Masses

Saturday	8:15 pm	St. John's
Sunday	8:00 am	St. Scholastica
Sunday	10:00 am	St. John's

SACRAMENTS & OTHER INFORMATION

Reconciliation

Saturday	7:45 pm	St. John's
----------------	---------	------------

Baptism & Confirmation

Preparation required. Call the Parish Office.

Anointing of the Sick

Call the Parish Office.

Marriage

Prep required. Call the Parish Office.

Adoration

Fridays 9:00 am to midnight at St. Wenceslaus Daily Chapel

WESTERN CATHOLIC COMMUNITY OFFICE

20087 Hub Drive, New Prague 56071

952-758-4642

Deacon Bob Wagner

Pastoral Associate

952-758-3225 (O) 612-703-0808 (C)

Bob.Wagner@npcatholic.org

Hall Rental:

Patty Giesen 952-758-3008 or email:

kpgiesen003@gmail.com

Prayer Chain WCC:

Carol Bauer 952-457-4057

Noreen Giesen 952-758-2608

Marlene Dohmen 952-492-6879

COLLECTION INFORMATION

WESTERN CATHOLIC COMMUNITY

SUNDAY, JANUARY 13, 2019

Total Collected 1/13/19	\$2,770
Collections at Mass	\$1,755
Electronic Collections	\$1,015
Under Budget for the Week	-\$384
Actual Collections YTD	\$84,478
Under Budget YTD	-\$3,608
Budget for Next Week	\$3,154

Thank you for your support!

Bulletin E-mail: info@npcatholic.org

Website: <http://www.npcatholic.org>

PARISH AND AREA NEWS

Volunteers Needed at Hope House

We are in need of much help from Jan. 20-Feb. 3, because many of our faithful volunteers are on vacation. If you have attended a training, you should have received a link for Sign Up Genius. Please consider signing up for a couple of shifts, if you are able. If you have not attended a training but would like to help, contact Mary Higgins at (952) 240-1604.

Suicide Grief Support Group

Family, friends, and anyone who has lost a loved one to suicide are invited to attend the monthly meeting of the Suicide Grief Support Group. The meeting will be held on Tues., Jan. 22nd from 7-8:30 pm at the Mayo Clinic Health System in New Prague. Please enter through the Emergency Room doors (southwest entrance) and take the southeast elevator (#2) to the lower level (B) and follow the signs to the Jameen Mape Conference Center. No fee or pre-registration is required. Please contact Tom Handrich at (952) 445-0107 for additional information.

CCW News:

Ladies, here are upcoming events you are all invited to attend. If you have any questions, please let me know or go on the website provided! CCW President, Mary Wick ~ mary.wick@swsaints.org



1. MCCL March for Life: Tues., Jan. 22nd, gather at St. Paul's Cathedral for the morning pro-life prayer service and the MN State Capitol for the 12:30 pm March for Life. See the ACCW website for more details.
2. Catholics at the Capital: Tues., Feb. 19th. Sign up at catholicsatthecapitol.org and visit the ACCW table.
3. ACCW Leadership Day: Sat., Feb. 23rd, "It Only Takes a Spark" at Immaculate Conception Church, Columbia Heights. See the ACCW website for more details.

Knights of Columbus Free Throw Contest

The New Prague Knights of Columbus will be sponsoring a Council Free Throw Contest on Sun., Jan. 27th from 1-2 pm. The contest is open to all girls and boys ages 9 through 14. The competition will be held at the St. Wenceslaus Parish Activities Center. You may register the day of the event; registration will begin at 12:30 pm. If you have any questions, please contact Jack Stasney at (952) 393-1043.

Please Join Us For an NPCAN Community Conversation

DATE: Sun., Jan. 27th

LOCATION: Holy Trinity Lutheran Church

TIME: Presentation: 6 pm to 7:30 pm;

A Reception to Follow

Please join us for an engaging discussion on climate change, its impact, and how we are all called to be a steward to the earth at this critical time, in benefit to our families, neighbors and future generations. In presenting this event, the New Prague Community Action Network

(NPCAN) and Holy Trinity Lutheran Church are pleased to also partner with FaithPoint Lutheran Church, New Day Church, and St. Wenceslaus Catholic Church.

Lenten Small Groups Coming Up

Why am I here? Where am I going? Where is God in my life? Reflect on your faith journey in Lenten small groups, with all new content. These groups will meet in homes or church locations for 5 weeks during Lent, with one follow-up session after Easter. Sign up will open in early February. If you are interested in facilitating or hosting a small group, please contact Laura at (952) 758-5131 or laura.schoenecker@npcatholic.org. Last year, over 200 parishioners took part. Don't miss out!

Start the year off right by refreshing your marriage with a Worldwide Marriage Encounter Weekend.

The next available weekends are Feb. 8-10 in Buffalo, MN and Feb. 15-17 in Belle Plaine.

Early registration is highly recommended. For more information, visit our website at: twincitieswwme.org or contact Brent & Tracy at applications@twincitieswwme.org or (612) 756-8720.



SOUP SUPPER BREADS & DESSERTS

Breads and desserts are needed for the **Feb. 18th Soup Supper fundraiser**. Please call Al or Mary Sticha at 758-2753 **by Feb. 13th** with questions on types and quantity of breads and desserts needed. Thank you.

SOUP SUPPER WORKERS NEEDED

Workers are needed for the 25th Annual Soup Supper. For those interested in helping prepare the soup on Mon., Feb. 18th, setting up, or serving, **please call Norb Sticha at 758-3888** for more information and signup. Please call even if you have worked in years past. Young and old are encouraged to consider helping out, and a special invitation is made to new parishioners to be a part of a very casual function which offers an opportunity to meet new people and affect the lives of many people.

Catholic Services Appeal

In response to the Gospel call to serve the poor and spread the Good News, the Catholic Services Appeal Foundation of

the Saint Paul and Minneapolis Area (CSAF) works as Christ's hands and feet throughout the 12-county Archdiocese. An independent non-profit organization, CSAF partners with 20 varied outreach ministries, thousands of individual donors, and over 185 Catholic parishes to serve the poor, support life, and strengthen the Catholic faith. We invite you to learn more about each of the vital ministries supported by the Foundation and to join us in transforming lives through the Gospel! Visit www.csafspm.org to learn more.



SUPPORT OUR PATRONS

who make this bulletin possible by their advertising.
BENDZICK MINI STORAGE

~ COLLECTION INFORMATION ~

St. Wenceslaus Site

SUNDAY, JANUARY 13, 2019

Total for 1/13/19	\$21,732
Collections at Mass	\$10,180
Electronic Collections.....	\$11,552
Over Challenge for the Week	+\$6,792
Actual Collections YTD.....	\$478,019
Under Challenge YTD.....	-\$964
Challenge for Next Week.....	\$14,940

PARISH FAMILY BINGO

Sun., Jan. 27th, Immaculate Conception Civic Center, Lonsdale. Lunch will be served starting at 11 am. Bingo Games start at 12 pm. Play bingo all afternoon for a cover charge of \$3. Extra cards available for .50 cents each. Bring the whole family for a Sunday afternoon of fun, food, and prizes. Invite your friends and neighbors. Everyone welcome! Sponsored by the Immaculate Conception CCW.

**FAITH FORMATION AND YOUTH MINISTRY****Confirmation Events:***February 3rd:*

1st Year Sponsor Event ~ 9-11:30 am

(includes 10:30 Mass)

2nd Year Sponsor Event ~ 10:30 am-1 pm

(includes 10:30 Mass)

Youth Ministry Sponsored Events:*Feb. 9th:* Second Harvest Heartland Brooklyn Park ~

9-11:30 am (14 spots); RSVP by Feb. 3rd.

Feb. 16th: Feed My Starving Children Chanhassen ~

9-11 am (20 spots); Join Code: GV7724

Feb. 23rd: Feed My Starving Children Chanhassen ~

9-11 am (20 spots); Join Code: 36LL26

**SCHOOL NEWS from SWS**

**Looking for Caring People to Help
Keep Catholic Education Growing at
St. Wenceslaus**

An Endowment Fund is a great avenue to help secure long-term viability of a Catholic School Education for Children of our Community. St. Wenceslaus School has a vibrant and growing fund that does just that ~ For our Children! The SWS Endowment revenue generated is distributed for Tuition Assistance/Tuition Reduction for our families in Need! We have distributed well over \$15K to SWS over the last four years. Anyone and Everyone can help. We accept any size donations: \$10 to \$500, One Time Large donations: \$1000 to \$10,000, as well as Large Legacy Donations over 5-10 ~ 15 years: ranging from \$5,000 to \$20,000 over the years of the commit-

ment. So please consider donating or join the group of Legacy Donors by simply picking up a card at the back of church. Fill out the Donation card or send a check to SW School. Mark it with "Donation for SWS Endowment Fund" **Your Generosity will continue to give for Years to Come!**

WESTERN CATHOLIC COMMUNITY St. John's & St. Scholastica

Keep Father Elgar in Your Prayers

This Sat., Jan. 26th, marks the ninth anniversary of dear Father Elgar's passing into eternal life. May we all keep him in our thoughts and prayers. Eternal rest grant unto him, O Lord, and let the perpetual light shine upon him. May his soul and all the souls of the faithful departed, through the mercy of God, rest in peace. Amen.

Notes from Deacon Bob:

1. I wish to express my great thanks to our Lady of Good Hope CCW for the books¹ which they gifted everyone at Christmas. How generous and thoughtful! If you were away at Christmas and did not receive a book, they are available, still wrapped, in the entry ways of our churches.
2. This past Sunday, the Feast of the Baptism of the Lord, was the last day of the Christmas Season. As we come to church this weekend, it seems so empty without the presence of the lovely manger scenes, lit trees, garland, and wreathes. I am so very thankful to those who have decorated our churches this Christmas. They have lightened up in many way this very dark time of our year. May we carry the vision and wonder of Christmas they have provided throughout the rest of this liturgical year.

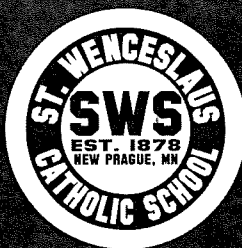
Our Lady of Good Help CCW Meeting

Our Lady of Good Help Council of Catholic Women meeting is on Mon., Feb. 4th at St. Scholastica Church basement. Rosary starts at 6:15 pm with lunch at 6:30 pm. ALL women of the parish are encouraged to come and ALL are welcome! Lunch committee is: Dawn Buszmann, Millie Odenthal, Sherri Odenthal, Patti Giesen, and Doreen Sueur.

Feasibility Study Update:

During November and December 2018, each family in the WCC was invited to participate in a feasibility study regarding the ability of the WCC to raise funds to pay for repairs at either St. Scholastica or St. John's. In total, 76 families participated in one-on-one interviews and another 35 families completed a survey. The total response was 111 households out of 285. The report is being completed. On Jan. 22nd, the WCC Advisory Council, whose recommendation initiated the study, along with Parish Trustees and Archdiocesan staff have been invited to meet with representatives of Mark Davey and Associates to review their findings. Soon after that, a summary of the findings will be mailed to each household in the WCC, with the full report available for parishioners to review at one of the church sites upon request.

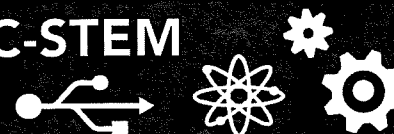
All Welcome OPEN HOUSE



St. Wenceslaus School & Little Saints Preschool

227 Main Street East, New Prague, Minnesota 56071

C-STEM



Call and schedule a personal tour or attend one of our Open House Events!



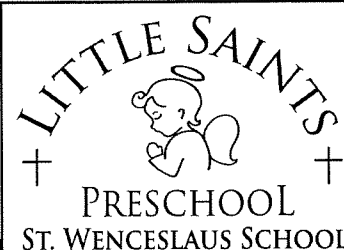
Preschool & Kindergarten Open House

January 29th 5:30-7:00

Kindergarten Open House/Information

February 12th 6:00-7:00

www.swsaints.org | @SaintWenceslaus | #swsaints
952.758.3133 or info@swsaints.org



Catholic Schools Week OPEN HOUSE!

Everyone welcome! Stop in!

SUNDAY, JANUARY 27

9:00 AM - 12:30 PM

- *Take a self-guided tour.
- *Revisit your former school rooms and hallways!
- *Check out the new STEM lab.
- *Teachers will be on hand to answer questions.
- *Register to win prizes!

Knights of Columbus Pancake Breakfast

Church Basement 8:00-12:30

Free Will Offering-All Donations to SWS

Scholastic Book Fair

Parish Activity Center 9:00-12:30

Knights of Columbus Free Throw Contest

St. Wenceslaus Gym 1:00-2:00

Open to all boys and girls ages 9-14

LITURGIES & PRIEST'S MASS INTENTIONS

INCLUDES ALL CHURCH LOCATIONS
WEEK OF JANUARY 21-27, 2019

Rosary at St. Wenceslaus
MONDAY – FRIDAY at 7:30 am
SATURDAY at 8:00 am

Monday, January 21

8:00 am Mass – SW

Tuesday, January 22

8:00 am Mass – SW

Wednesday, January 23

8:00 am SWS Mass – SW

Thursday, January 24

8:00 am Mass – SW

Friday, January 25

8:00 am Word & Communion – SW

Saturday, January 26

3:00 pm Confession – SW

4:00 pm Kris Huhner† – Mass – SW

7:45 pm Confession – SJ

8:15 pm Father Elgar Bockenfeld† – Mass – SJ

Sunday, January 27

8:00 am Ronald Kaufenberg† – Mass – SS

8:30 am Mass – SW

10:00 am Mass – SJ

10:30 am Mass – SW

MEETINGS & EVENTS CALENDAR

WEEK OF JANUARY 21-27, 2019

Monday, January 21:

No School - SWS

Tuesday, January 22:

No Events

Wednesday, January 23:

Early Morning Scripture Study, 7-8 am

– Parish Office Dining Room

Morning Scripture Study, following 8 am Mass

– Parish Office Dining Room

Disciples of Christ, 6:15-7:30 pm

– Campus Wide

Junior Youth Alive, 6:30-8 pm

– Parish Office Upper Parlor

Adult Bells & Choir – Choir Room

Thursday, January 24:

Men's Group, 6:30-8 pm

– Parish Office Upper Parlor

Friday, January 25:

Adoration, 9 am-midnight – SW Chapel

Saturday, January 26:

Scripture Review w/Fr. Kevin, 8:30-10 am

– Pius X Room, Church Basement

Sunday, January 27:

KofC St. Wenceslaus School Pancake Breakfast,

7:30 am-12 Noon – SW Church Basement

Children's Liturgy of the Word at 8:30 and

10:30 am Masses – SW Chapel

KofC Free Throw Contest, Noon – SW Gym

STAFF DIRECTORY NEW PRAGUE AREA CATHOLIC COMMUNITY**Rev. Kevin Clinton**

Pastor

952-758-3225

Kevin.Clinton@npcatholic.org

Rev. Eugene Theisen

Associate Pastor

952-758-0469

Eugene.Theisen@npcatholic.org

Deacon Bob Wagner

Pastoral Associate

952-758-0463

Bob.Wagner@npcatholic.org

Peter Guzulaitis

Parish Business Administrator

952-758-0465

Peter.Guzulaitis@npcatholic.org

Ruth Weinandt

Parish Accountant &

Pastoral Ministry Associate

952-758-0466

Ruth.Weinandt@npcatholic.org

Laura Schoenecker

Faith Formation Director

Pre-K through Adult

952-758-5131

Laura.Schoenecker@npcatholic.org

Pamela Sherlock

Youth Ministry & Confirmation Coordinator

952-758-0477

Pamela.Sherlock@npcatholic.org

Mary Higgins

Adult Faith Formation Associate

952-758-0464

Mary.Higgins@npcatholic.org

Kim Doyle

St. Wenceslaus School Principal

952-758-3133

Kim.Doyle@swsaints.org

Jolene Busch

Preschool Director

952-758-0480

Jolene.Busch@swsaints.org

Debbie Gregor

Director of Liturgical Music at SW

952-758-4207

Debbie.Gregor@npcatholic.org

Lisa Levenson

Parish Administrative Assistant

952-758-3225

Lisa.Leverson@npcatholic.org

PARISH BUSINESS OFFICE

215 Main St E, New Prague, MN 56071

PH 952-758-3225 FAX 952-758-2960

FAITH FORMATION OFFICE

On campus in Parish Activity Center

ST. WENCESLAUS SCHOOL

227 Main St E, New Prague, MN 56071

PH 952-758-3133 FAX 952-758-2958

LITTLE SPIRITS PRESCHOOL

On campus of SWS ~ 1950's building

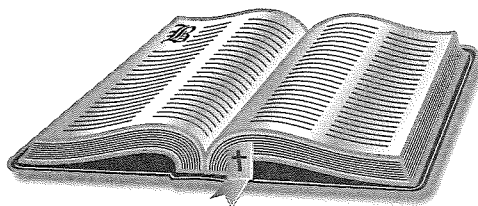
952-758-0480

MAINTENANCE DEPARTMENT

952-758-2327

SCRIPTURE READINGS

WEEK OF JANUARY 21-27, 2019

**Monday, January 21:**

HEB 5:1-10 / MK 2:18-22

Tuesday, January 22:

HEB 6:10-20 / MK 2:23-28

Wednesday, January 23:

HEB 7:1-3, 15-17 / MK 3:1-6

Thursday, January 24:

HEB 7:25-8:6 / MK 3:7-12

Friday, January 25:

ACTS 22:3-16 / MK 16:15-18

Saturday, January 26:

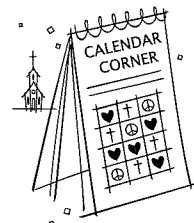
2 TM 1:1-8 / MK 3:20-21

Sunday, January 27:

NEH 8:2-4A, 5-6, 8-10 / 1 COR 12:12-30 /
LK 1:1-4, 4:14-21

**CHURCH OF ST. WENCESLAUS
CALENDAR CORNER**

Thank you to the Following Sponsors:
**Mobile Meats, Lau's Czech Bakery
and Coffee Shop & David G. Barta
Construction LLC**

**Date:**

Jan. 9, 2019

Winner:

Milton &
Denise Tikalsky



<p>Patty's Place</p> <ul style="list-style-type: none"> • Specialty Coffees • Fresh Pastries • Hand Dipped Ice Cream • Cake Decorating <p>108 E Main Street #1 New Prague 952-758-5808 Open 7 Days A Week</p>	<p>NPCL (New Prague-Osaka-Louisville) Mutual Insurance Company</p> <p>205 County Road 37 New Prague, MN 56071</p> <p>952-758-5964 www.npclinsurance.com</p> <p>Competitive Rates for Farm & Home Since 1882</p>	<p>SKLUZACEK</p> <p>Cabinetry & Woodworking</p> <p>Dave Skluzacek • 612-986-8443 New Prague, MN</p>	<p>First Bank & Trust</p> <p>1101 1st Street SE, New Prague • 952-758-4491 BANKeasy.com MEMBER FDIC</p>
<p>NEW PRAGUE FAMILY & SPORTS CHIROPRACTIC CENTER</p> <p>Dr. Mike Kilpatrick 952-758-4121</p>	<p>Jon P. Colling, D.D.S. Thomas W. Smyth, D.D.S. Ruth Peterka, D.D.S.</p> <p>newpraguedentist.com</p> <p>OFFICE HOURS MON-FRI NEW LOCATION! 211 Cty. Rd. 37 New Prague 952-758-2376</p>	<p>Scott & Jenny Smisek</p> <p>JS Mechanical Inc. New Prague, MN 952-758-2986 scott@sjsmechanicalinc.com</p>	<p>WORNSON GOGGINS, P.A. ATTORNEYS JUDICIAL PROBATE</p> <p>119 E. MAIN ST., NEW PRAGUE 952-758-4161 WWW.LAWYERSNP.COM</p>
<p>Bruzek FUNERAL HOME Serving With Compassion Since 1903 Steve and Mary Frost Cremation & Funeral Planning 952-758-4949</p>	<p>MAIN ST. DENTAL Family Dentistry & Orthodontics</p>	<p>Edina Realty</p> <p>Pat Sullivan REALTOR 952.457.0479 patsullivan@edinarealty.com www.edinarealty.com/pat-sullivan-realtor</p>	<p>MARQUARDT JEWELERS</p> <p>New Prague</p>
<p>Parkview Medical Clinic</p> <p>Daniel R. Berg, MD Michael P. O'Rourke, MD Jean Craig, MD Heather Hamernick, MD</p> <p>New Patients Welcome Same Day Appointments Available Saturday Morning Appointments www.parkviewclinic.com 952-758-2535</p>	<p>NEW PRAGUE AUTO REPAIR www.NewPragueAutoRepair.com</p> <p>Since 1974 Gary Kohoutek, Owner 952.758.4471 205 4th Ave. SW New Prague, MN 56071</p>	<p>New Prague "Gentle Dental Care"</p> <p>Dr. Gregory R. Dvorak, D.D.S. Cosmetic & Sedation Dentistry 136 West Main Street, New Prague 952-758-3003 • www.dr.dvorak.com</p>	<p>BENDZICK MINI STORAGE Brand New Storage Facility Excellent Secure Location 1 Mile North of New Prague on Hwy. 21 507-334-3422</p>
<p>Ambroz Plumbing, Inc. Paul Ambroz</p> <p>New Construction - Remodel - Service 952-758-6265 • Cell 952-292-4413 Lic# 059407-PM</p>	<p>TUPY INSURANCE AGENCY, INC.</p> <p>For Your Personal or Business Insurance Needs We are here to Serve You!</p> <p>111 East Main Street New Prague, MN 952-758-2433</p>	<p>In our all new Werner Giesen Bierstube Event Center 952-758-4226 1306 1st St. NE, New Prague Please email: taproom.gbco@gmail.com</p>	<p>NEW PRAGUE MINI STORAGE, INC. From 5x10 thru 10x40. Climate Controlled. Now Available. Easy access, 7 days a week, 24 hours a day www.NewPragueMiniStorage.com 952-758-7819</p>
<p>MACH LUMBER</p> <p>Paul Kratochvil, Owner Convenient - We Deliver! 952-758-3235 M-F 7-5; Sat. 8-Noon</p> <p>201 Second Ave. SW, New Prague 1 block S of Main St, across from ConAgra</p>	<p>KUBES Custom Cabinets</p> <p>Wencel Kubes New Prague 952-758-2262</p>	<p>YOU CALL... WE HAUL...</p> <p>Complete Household Transfer Licensed • Bonded Reasonable Rates</p> <p>TIM or JOHN 952-758-2552 16264 310 St. New Prague</p>	<p>Marlene Mushitz, CRS, GRI, CDPE 1301 1st St. NE New Prague 612-978-2222 www.DynamicMarlene.com</p>
<p>Odenthal Landscaping</p> <p>Retaining Walls, Patios & Much More For All Your Landscaping Needs</p> <p>New Prague, MN www.odenthallandscaping.com Phone & Fax: 507-364-5460 Cell: 612-703-4803</p>	<p>5% Commission Full Service KubesRealty.com</p>	<p>NEW PRAGUE VETERINARY CLINIC Dr. William F. Vollmar Dr. Katie Vollmar Boarding Services 1003 East Main St. New Prague, MN 952-758-2881</p>	<p>AMERICAN FAMILY INSURANCE</p> <p>Melissa Kreuser, Agent Bus: (952) 758-5460 1301 1st St NE, New Prague</p>
<p>DOUG VAYDA Specialist in the practice of Orthodontics 101 Central Ave. New Prague 952-758-6999</p>	<p>MALA STRANA REHABILITATION CENTER & Assisted Living New Prague • 952-758-2511</p>	<p>Suel Printing Company Pleased to be the printers of your Parish Bulletin. 200 Main St. East, New Prague 952-758-4435 awann@suelprinting.com</p>	<p>SKLUZACEK CONSTRUCTION, INC.</p> <p>Steve Skluzacek, Owner #0004897 952-758-4158</p>
<p>Positively Impacting Peoples' Lives Since 1881</p> <p>Roundbank New Prague: 952-758-BANK (2265) • Farmington: 651-463-8300 www.roundbank.com</p> <p>Member FDIC EQUAL HOUSING LENDER</p>			
<p>For Sale Call 952-758-4435</p>	<p>Place Your Ad Here! 952-758-4435</p> <p>Michael P. Traxler Financial Advisor 222 Main Street East New Prague, MN 56071 952-758-8060</p> <p>Securities & Advisory Services offered through Michael Traxler Wealth Management, LLC a Registered Investment Advisor in the State of Minnesota.</p>		