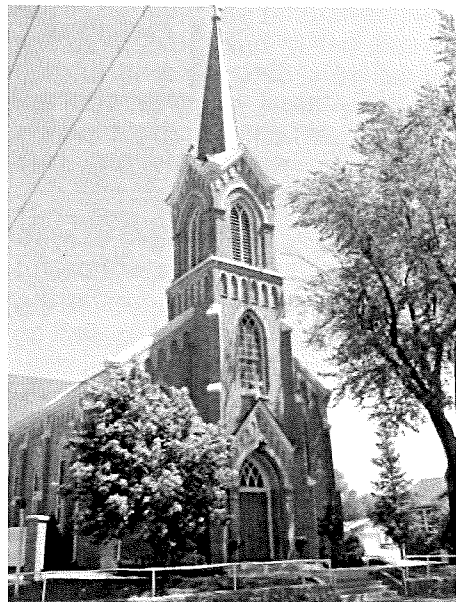


**6TH SUNDAY IN ORDINARY TIME**

**FEBRUARY 17, 2019**

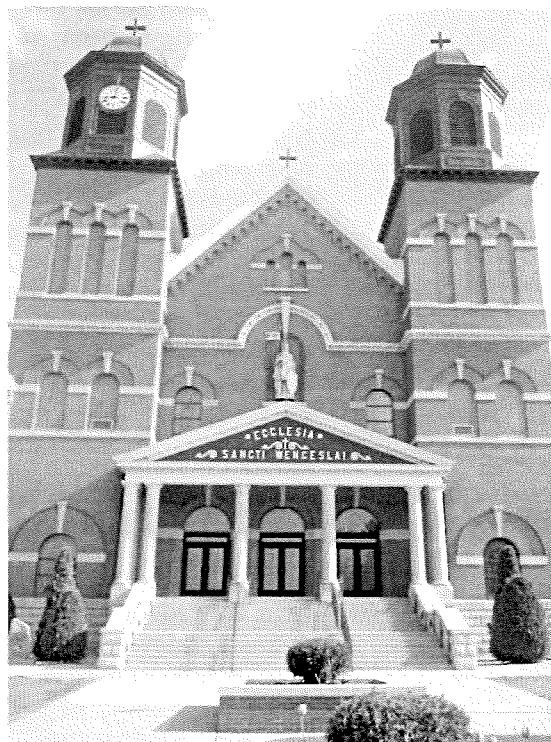
**All are Welcome!**



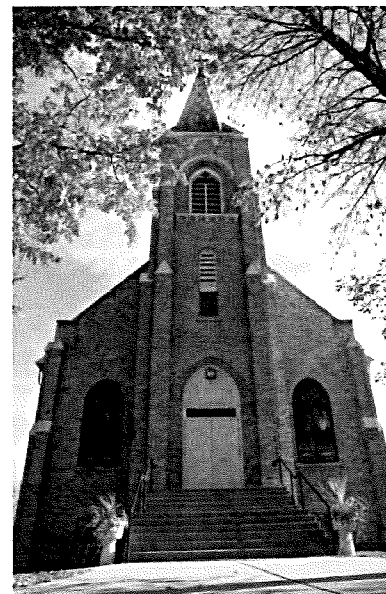
**St. John the Evangelist**

**Parish Mission Statement**

*We are a Catholic community forming disciples of Jesus Christ dedicated to loving God through our worship, sharing the Good News, and loving service to others.*



**St. Wenceslaus**



**St. Scholastica**

**NEW PRAGUE AREA CATHOLIC COMMUNITY**  
*Three Sites of Worship, One Community of Faith*

**Including St. Wenceslaus &  
The Western Catholic Community of St. John the Evangelist and St. Scholastica**

215 MAIN STREET EAST ■ NEW PRAGUE, MN 56071 ■ 952-758-3225 ■ NPCATHOLIC.ORG

## We welcome you...

Welcome to the greater New Prague Area Catholic Community which includes the Church of St. Wenceslaus and the Western Catholic Community of St. John the Evangelist and St. Scholastica. We are happy you are here. Should you be visiting just for today, WELCOME! If you are seeking a church home, we would be honored to have you consider joining our faith community. If you are interested in a membership, please phone the parish office for assistance and registration. If you are over the age of 21, we ask that you register. Please feel free to stop by the parish office during office hours to register or you may do so online. Again, we are happy you are here.

### At the Church of St. Wenceslaus

#### PARISH OFFICE HOURS

Monday – Friday 8:30 am to 4:00 pm

#### MASS SCHEDULE

##### Weekend Masses

Saturday..... 4:00 pm  
Sunday..... 8:30 & 10:30 am

##### Morning Word & Communion

Friday..... 8:00 am

##### Weekday Masses

Monday-Thursday ..... 8:00 am

#### SACRAMENTS & OTHER INFORMATION

##### Anointing of the Sick

Available to those who are seriously ill or suffering from a prolonged illness. Call 952-758-3225

##### Confirmation

Preparation required. Call 952-758-0477

##### Reconciliation

Saturdays at 3 pm in the church.

##### Baptism

Preparation required. Call 952-758-3225

##### Marriage

Six months to one year preparation time required.  
Call 952-758-3225

##### Rosary

Monday – Friday 7:30 am & Saturday 8:00 am in the church.

##### Fatima Prayer Cell

Monday – Wednesday after 8 am service in the chapel.

##### Adoration

Friday 9:00 am to midnight in the chapel.

##### Early Morning Scripture Study

Wednesday 7:00 to 8:00 am – In Parish Office.

##### Fr. Kevin's Bible Study

Saturdays 8:30 to 10 am – Pius X Room in church basement.

##### Prayer Chain

Judy: 952-758-2220 or Arnita: 952-758-4943

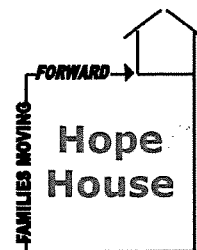
##### BeFrienders

Ann Schoenbauer: 952-758-3456 or

Lois Giesen: 952-758-2138

## A Note Regarding Hope House...

Hope House opened its doors in June of 2014. We have served 65 families, including 143 children and their parents, from Scott and Carver counties in the Families Moving Forward program. With the help of more than 200 volunteers from area churches and local youth groups, we have hosted 46 weeks in our comfortable and convenient location, making a house into a home for our guests while they were with us. We are so grateful to Mayo Health Systems for their generous support in providing us with the use of the building. We are also grateful to our wonderful volunteers and donors who have spent countless hours at the house with our guests or making beds and cleaning, as well as others who have provided us with furnishings, supplies, delicious meals, or financial support.



Things change. We have now formed a 501c3, The Hope House Foundation, in order to better serve homeless families and secure our future. Our relationship with Mayo is coming to an end, and while we will truly miss our homey, comfortable hosting spot we are looking forward to beginning our new relationship with Holy Trinity Lutheran Church, which has agreed to be our host site through the year 2020. We are exploring long range options.

Besides the obvious benefit to our guest families, our volunteers have also been blessed. We have learned what it's like to be homeless and how it can happen to families. We've learned compassion and made new friends in the community. We are proud to be a part of Families Moving Forward's parent organization, Beacon Interfaith Housing Collaborative, and the broader work they do to support affordable housing, coordinating the efforts of almost 100 congregations in the Twin Cities area.

At its core, being a part of Families Moving Forward has given us a way to live out our Gospel call to serve those in need. Jesus was once a homeless child and we see him in the children whose lives we have been privileged to touch. We have also supplied dozens of beds and many household items for families moving into housing, helped with auto repairs, and supported the families who have moved into the New Prague area.

Our last two weeks of hosting at Hope House will be April 21-May 5. We will begin at Holy Trinity in December of 2019. It's always a good time to become a new volunteer. Please contact Rosella Kes (952-758-3578) or Mary Higgins (952-240-1604) to be on the contact list for future new volunteer trainings. To learn more about Beacon, visit [www.beaconinterfaith.org](http://www.beaconinterfaith.org). **Families Moving Forward is a great way to put love into action.**

## Western Catholic Community

### From the Desk of Deacon Bob

There is an old Crosby, Stills, and Nash song entitled "49 Bye Byes", in which the singer addresses the hurts he has experienced because his lover has been unfaithful to him. The song ends with the question, "Who, who do you love?" Throughout the Old Testament, the relationship of God with the people of Israel has been expressed in the same way. God is portrayed as the faithful husband and Israel as the unfaithful wife. In spite of the hurt caused by Israel's "cheating" (adoring false gods), God, always trusting, remains faithful to Israel and welcomes Israel back into relationship.

The question that Stephen Stills poses in his song, "Who, who do you love?" is addressed to us in the readings today. To love someone is to place our complete trust in that someone. As we live our daily lives, who do we love? In whom do we place our trust? All three readings make it very clear that if we place our love or trust in human beings or the wisdom of humanity, we will end up finding ourselves deceived and cursed with disappointment. Isaiah, Paul, and Jesus express clearly that the only one in whom we can completely trust and love is God and God alone.

Yet how often humanity errs in misplacing the mantle of Godhead on human leaders? In spite of the good intentions of those who lead us, whether they be religious leaders, politicians, doctors, lawyers, or other professionals, the fact remains that because of our humanity, they cannot be foolproof from error and disappointing us. St Paul tells the Corinthians that salvation is not found in conventional human wisdom. Only futility and despair is found in human wisdom. Isaiah clearly labels those cursed who trust in human beings and not in God. In Luke's Sermon on the Plain, Jesus calls those who trust in God "Blessed" and warns those who do not that all they will experience in life is "woe."

As we examine our lives, where have we experienced being blessed? Where have we experienced woe? It all boils down to the questions: "who do I love?" and, "in whom do I trust?"

**Deacon Bob Wagner**

*Pastoral Associate*

**New Prague Area Catholic Community**

### Mass Schedule Volunteers - St. John's & St. Scholastica

FEBRUARY 23 & 24, 2019	Saturday St. John's 8:15 PM	Sunday St. Scholastica 8:00 AM	Sunday St. John's 10:00 AM
<b>Lector</b>	MaryCarol Wolf	Becky Colwell	Danielle Solheid
<b>Eucharistic Ministers</b>	Kevin Giesen	Cindy Jirak, Judy Pauly & Kevin Odenthal	Megan Giesen, Jonila Weiers, Lori Wooten
<b>Servers</b>	Mitchel & Hunter Pomije	Leo Pexa & Matthew Schoenecker	Brenna & Samantha Solheid, Mitchel & Hunter Pomije
<b>Gift Bearer Family</b>		Vern Pauly Family	Andy Tupy Family

### Important Information

#### Weekend Masses

Saturday.....	8:15 pm	St. John's
Sunday.....	8:00 am	St. Scholastica
Sunday.....	10:00 am	St. John's

#### SACRAMENTS & OTHER INFORMATION

#### Reconciliation

Saturday.....	7:45 pm	St. John's
---------------	---------	------------

#### Baptism & Confirmation

Preparation required. Call the Parish Office.

#### Anointing of the Sick

Call the Parish Office.

#### Marriage

Prep required. Call the Parish Office.

#### Adoration

Fridays 9:00 am to midnight at St. Wenceslaus Daily Chapel

#### WESTERN CATHOLIC COMMUNITY OFFICE

20087 Hub Drive, New Prague 56071  
952-758-4642

#### Deacon Bob Wagner

#### Pastoral Associate

952-758-3225 (O) 612-703-0808 (C)

Bob.Wagner@npcatholic.org

#### Hall Rental:

**Patty Giesen** 952-758-3008 or email:

kpgiesen003@gmail.com

#### Prayer Chain WCC:

**Carol Bauer** 952-457-4057

**Noreen Giesen** 952-758-2608

**Marlene Dohmen** 952-492-6879

#### COLLECTION INFORMATION

#### WESTERN CATHOLIC COMMUNITY

#### SUNDAY, FEBRUARY 10, 2019

<b>Total Collected 2/10/19 .....</b>	<b>\$1,842</b>
<b>Under Budget for the Week .....</b>	<b>-\$1,312</b>
<b>Actual Collections YTD.....</b>	<b>\$95,227</b>
<b>Under Budget YTD .....</b>	<b>-\$2,542</b>
<b>Budget for Next Week .....</b>	<b>\$3,154</b>

**Thank you for your support!**

**Bulletin E-mail: [info@npcatholic.org](mailto:info@npcatholic.org)**

**Website: <http://www.npcatholic.org>**

## PARISH AND AREA NEWS

### SOUP SUPPER IS MONDAY ~

**Feb. 18th, 4:30-7 pm.** Casual family event. Three soups, breads, and desserts. Served in the church dining area. **Check Out** the most recent issue of the *Catholic Spirit* ~ Feb. 7, 2019, Page 1; **Catholic Charities Higher Ground: Multi-service approach to homelessness.** NPACC does a tremendous job of supporting Catholic Charities work in the St. Paul area with donations and volunteers. You will see how we can and do reach out to those in need.

### CCW Meeting:

Ladies of the Parish and CCW members, please join us in the church basement on Monday morning, Feb. 18th, after Mass for rolls and coffee to discuss the upcoming Spiritual Day Event. This Event is at our parish, so help is needed from many Ladies. Remember you do not need to be a "member" of CCW to attend a meeting or help, because we are all Catholic Women and under the Blessed Mothers Council. God Bless! Mary Wick, CCW President



### It's show time!

Join us for one of three showings for the movie *Amazed and Afraid; The Revelation of God became man*. It is a fantastic series. We will be offering more of these if you like this one... so check it out! The show times are Feb. 20th at 8:45 am and 6:15 pm and Thurs., Feb. 21st at 6:15 pm. We will be hosting these at the SW site in the chapel. The videos are about 50 minutes.

### W.O.N. (Women Only Night)

**Jesus Loves You, and So Does His church: The Critical Importance of a Mighty, Majestic Faithful Woman's Heart**

It is another night for women only! Grab some lady friends and join us as we socialize, relax, and fill our faith cup! Liz Kelly is an accomplished writer, spiritual director, teacher, and speaker. Join us on Feb. 24th. Doors will open at 6 pm and Liz will begin her talk at 6:30, with all completed by 7:30. I hope to see YOU there!

### Good Friday Passion Mime ~ Adult Actors Needed

Plans are developing for April 19th Good Friday's ecumenical liturgy. Again this year, we will, with the two Lutheran faith communities in town, proclaim the Passion according to John using rehearsed, adult actors miming the Gospel. Adults interested in participating in the Good Friday Passion mime, with rehearsals on Sunday afternoons, are asked to contact the parish office or Father Kevin with their contact information. There will be no rehearsals until Lent begins.

### Catholic Services Appeal

In response to the Gospel call to serve the poor and spread the Good News, the Catholic Services Appeal Foundation of the Saint Paul and Minneapolis Area (CSAF) works as Christ's hands and feet throughout the



12-county area. An independent non-profit foundation, the CSAF focuses solely on supporting 20 designated outreach ministries and nothing else. Newly added ministry partners this year include Abria Pregnancy Resources and The Society of St. Vincent de Paul ~ Twin Cities. We invite you to learn more about each of the vital ministries supported by the Foundation and to join us in transforming lives through the Gospel! Visit [www.csafspm.org](http://www.csafspm.org) to learn more, and please prayerfully consider how you might give back via the CSAF.

### ~ COLLECTION INFORMATION ~

St. Wenceslaus Site

SUNDAY, FEBRUARY 10, 2019

<b>Total for 2/10/19</b> .....	\$7,935
Under Challenge for Week.....	-\$7,005
Actual Collections YTD.....	\$519,122
Under Challenge YTD.....	-\$19,622
Challenge for Next Week.....	\$14,940

### 12th Annual Roman Barten Memorial Benefit

Please save the date for the **12th Annual Roman Barten Memorial Benefit Breakfast on Sun., March 31st, at the New Prague KC Hall**. This year, all proceeds go to the care of 2-year-old Abigail Nelson, daughter of Andrew and Laurie Nelson of New Prague.

Abigail Joy was diagnosed with Trisomy 18 while in her mother's womb. Ultrasounds revealed six heart defects and that the brain did not have a corpus callosum (nerves joining the two sides of the brain.) Doctors gave NO HOPE to her parents, telling them that their baby will die. Through prayers and trust in the Lord, God healed five of the heart defects and Abby was born with a normal corpus callosum! At four months old, God sent a heart surgeon who performed open heart bypass surgery on the last heart defect. Abby defied medical expectations and LIVED.

### HOW CAN YOU HELP?

~ **PRAY** for Abigail, her family, and for the success of this breakfast.

~ **JOIN US** on Sun., March 31st, from 8 am to 1 pm at the New Prague KC Hall.

~ **SPREAD THE WORD!** Tell as many people as possible about the breakfast and/or donation opportunities.

~ **VOLUNTEER** your time or **DONATE** an item for the drawing.

~ **MONETARY DONATIONS** are gratefully accepted. **Donations can be sent to "Abigail Nelson Benefit Account" at First Bank and Trust New Prague, 1101 1st Street SE, New Prague. All donations are anonymous.**

### SUPPORT OUR PATRONS

who make this bulletin possible by their advertising.  
**AMBROZ PLUMBING, INC. ~ PAUL AMBROZ**



## FAITH FORMATION AND YOUTH MINISTRY

### Youth Ministry Sponsored Event:

Feb. 23rd: Feed My Starving Children

Chanhasen ~ 9-11 am (20 spots); Join Code: 36LL26

### Have you ever thought about participating in the Passion Pantomime?

Calling all high school youth:

Meet in church for auditions/rehearsals at 12:30 on  
March 3rd.

### Middle School Lenten Book Club!

Middle Schoolers Think the Bible is Boring;  
But It Doesn't Have to Be.

*Encounter: Experiencing God in the Everyday* is the new Bible study for middle-school-age children by Mark Hart and Ascension Press. Through fun & engaging video and discussion sessions, your middle schooler will experience God as a loving father with a great plan for them. They will also learn about the Biblical roots of the Sacraments and the Mass. Join us for *Encounter: Experiencing God in the Everyday* at the New Prague Area Catholic Community in the Faith Formation Office beginning March 6th at 3 pm and continuing every Wednesday during Lent. For more information or to register for the study, call Pamela at (952) 758-0477 or email [pamela.sherlock@npcatholic.org](mailto:pamela.sherlock@npcatholic.org) or register on-line here: <https://npacc.wufoo.com/forms/2019-middle-school-lenten-book-club/>

### Disciples of Christ Summer Plus

Our Lenten Lesson for our Summer Children will be on Sun., March 3rd from 9:30-10:30 am. We will meet in the foyer of the PAC. If your child attended sessions this past summer... this is for them. Our catechists are busy preparing some wonderful Lenten activities for them. Questions? Call Laura at (952) 758-5131.

### Have any crochet cotton laying around?

I am looking for some donations! On the night of our Lenten Experience on March 13th, we will be making a craft using crochet cotton, I thought some of you crafters out there may have some laying around. I'm also looking for a few volunteers to help with food or one of our crafts. This is our family night with food, crafts, and Live Stations. If you have any crochet cotton, please drop it off at the parish office. If you can help us out that night with crafts or food, please contact Laura at (952) 758-5131. Thank you!

### Save the Date ~ YM Mission Trip

Have you ever wanted to participate in a mission where your faith and your feet work hand in hand? Young Neighbors in Action is a Catholic, Christ centered mission program where you will do just that! The Summer Service and Justice Immersion Trip will take place June 23rd-28th! Watch for more information.



## SCHOOL NEWS from SWS

### FIRST ANNUAL BEAN BAG TOURNAMENT

Please Come Out And  
Support Our School  
Saturday, February 23, 2019  
St. Wenceslaus School PAC

#### Schedule of Events:

7:00am - 9:00am  
French Toast & Sausage Breakfast  
(New Prague Lions)

9:00am - 4:00pm  
Bean Bag Tournament  
(Register a 2-person team All Ages  
\$30 + 2 non-perishable food items)

7:00am - 2:00pm  
Silent Auction  
Donate or Bid

ALL DAY Concessions and Beer Garden

Any questions contact Dawn Biren  
952-237-8664; [dawn.biren@swsaints.org](mailto:dawn.biren@swsaints.org)

## WESTERN CATHOLIC COMMUNITY St. John's & St. Scholastica

### Catholic United Financial Council Spaghetti Dinner

All are welcome to enjoy a delicious home-cooked spaghetti dinner, hosted by St. John the Evangelist Catholic United Financial Council. This matching grant spaghetti dinner will be on Fri., Feb. 22nd from 4:30-7:30 pm at the KC Hall in New Prague. Take-outs will also be available.

### WCC Breakfast

The February WCC breakfast has been postponed for the following reasons:

- 1) Fundraising Fatigue. In the last 5 weeks there have been numerous pancake breakfasts and other meal related fundraisers, all of them good causes, three of them from our local Knights of Columbus council. This includes CUF spaghetti dinner on Feb. 22, 2019. Because our breakfast is sandwiched among these other fundraisers, this has adversely impacted the amount of money raised at our breakfast (\$600 to \$1500 over the past several years).
- 2) Fatigue. The majority of the burden of organizing and recruiting volunteers for the breakfast has fallen on the same people.
- 3) We need new people to come forward and organize. Over the past several years, many of those who have been asked have refused to help at the breakfast. If we want to have a breakfast, we need people to step up to support and work the breakfast. Our Lady of Good Help CCW has been asked to help organize and get volunteers for a breakfast in March. When a new date is determined we announce when it will be. Thank you for your understanding.

# St. Wenceslaus' Soup Supper

## Annual Fundraiser

### Annual Soup Supper is Monday, February 18, 2019

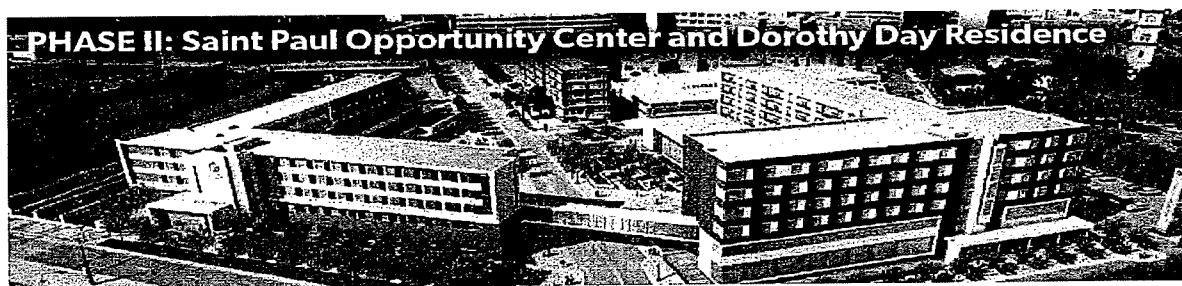
This weekend marks our parish's 25<sup>th</sup> annual Soup Supper Fundraiser. This annual happening funds our parish's monthly meals served at the Dorothy Day Center in St. Paul. If you haven't been able to support it in the past, we hope you will consider supporting it this year by attending. The meal is served in the St. Wenceslaus Church Basement Dining Hall from 4:30pm to 7:00pm or until sold out. Chili, Vegetable Beef, and Chicken Noodle Soups along with fresh baked breads and desserts make this a fantastic meal for the entire family. Take outs are also available. Tickets will be sold at the door. Cost: Free Will Offering.

Many thanks to the **First Catholic Slovak Ladies Association (FCSLA) Branch #W001**. FCSLA is a Catholic fraternal organization that will once again this year provide a \$600 matching grant. This donation greatly enhances the fiscal success of the Soup Supper Fundraiser.

**Interested in learning more or volunteering?**

Contact Norb Sticha at 952.758.3888 or [norbsticha@gmail.com](mailto:norbsticha@gmail.com)

## Dorothy Day Place



Phase I Higher Ground Saint Paul=opened January 2017

**Pay-for-Stay Shelter for Men**, where 60% of guests are working. This provides guests with the option to reserve a bunk with a locker. Permanent housing for formerly homeless individuals, including a medical respite wing, a wing for late stage alcoholic women, and preference for veterans.

**Total Number of units at Higher Ground Saint Paul: 473**

- Men's Shelter – 172
- Women's Shelter – 60
- Late Stage Alcoholic Women's Program – 12
- Respite Care – 16
- Pay for Stay – 48
- Floors 3, 4, 5 (Single Room Occupancy) – 165

### Phase II Saint Paul Opportunity Center and Dorothy Day Residence=opening late 2019

In partnership with Ramsey County and several nonprofit organizations, the Saint Paul Opportunity Center will provide:

- Job Training
- Physical and mental health clinics
- A Veterans Resource Hub
- Housing retention and placement

The Dorothy Day Residence will provide an additional 171 units of much needed affordable housing. There will be dedicated housing for young adults and a housing wing dedicated for veterans. When completed, Catholic Charities Dorothy Day Place will have a transformative impact on thousands of lives and will be a key milestone for advancing the statewide plan to prevent and end homelessness. Meals will resume to be prepared and served in the new Saint Paul Opportunity Center when completed.



**LITURGIES & PRIEST'S MASS INTENTIONS**

INCLUDES ALL CHURCH LOCATIONS  
WEEK OF FEBRUARY 18-24, 2019

**Rosary at St. Wenceslaus**  
**MONDAY – FRIDAY at 7:30 am**  
**SATURDAY at 8:00 am**

**Monday, February 18**

8:00 am ..... Mass – SW

**Tuesday, February 19**

8:00 am ..... Mass – SW

**Wednesday, February 20**

8:00 am ..... Bless the Family – SWS Mass – SW

**Thursday, February 21**

8:00 am ..... Word & Communion – SW

10:30 am ..... Mass – Mala Strana

**Friday, February 22**

8:00 am ..... Word & Communion – SW

**Saturday, February 23**

3:00 pm ..... Confession – SW

4:00 pm ..... Kris & Dave Huhner†,  
..... James Dohmen† – Mass – SW

7:45 pm ..... Confession – SJ

8:15 pm ..... Dorothy Shimota† – Mass – SJ

**Sunday, February 24**

8:00 am ..... Ronald Kaufenberg† – Mass – SS

8:30 am ..... Mass – SW

10:00 am ..... Severin Riesgraf† – Mass – SJ

10:30 am ..... Mass – SW

**STAFF DIRECTORY** NEW PRAGUE AREA CATHOLIC COMMUNITY**Rev. Kevin Clinton**

Pastor

952-758-3225

Kevin.Clinton@npcatholic.org

**Rev. Eugene Theisen**

Associate Pastor

952-758-0469

Eugene.Theisen@npcatholic.org

**Deacon Bob Wagner**

Pastoral Associate

952-758-0463

Bob.Wagner@npcatholic.org

**Peter Guzulaitis**

Parish Business Administrator

952-758-0465

Peter.Guzulaitis@npcatholic.org

**Ruth Weinandt**

Parish Accountant &

Pastoral Ministry Associate

952-758-0466

Ruth.Weinandt@npcatholic.org

**Laura Schoenecker**

Faith Formation Director

Pre-K through Adult

952-758-5131

Laura.Schoenecker@npcatholic.org

**Pamela Sherlock**

Youth Ministry & Confirmation Coordinator

952-758-0477

Pamela.Sherlock@npcatholic.org

**Mary Higgins**

Adult Faith Formation Associate

952-758-0464

Mary.Higgins@npcatholic.org

**Kim Doyle**

St. Wenceslaus School Principal

952-758-3133

Kim.Doyle@swsaints.org

**Jolene Busch**

Preschool Director

952-758-0480

Jolene.Busch@swsaints.org

**Debbie Gregor**

Director of Liturgical Music at SW

952-758-4207

Debbie.Gregor@npcatholic.org

**Lisa Levenson**

Parish Administrative Assistant

952-758-3225

Lisa.Leverson@npcatholic.org

**PARISH BUSINESS OFFICE**

215 Main St E, New Prague, MN 56071

PH 952-758-3225 FAX 952-758-2960

**FAITH FORMATION OFFICE**

On campus in Parish Activity Center

**ST. WENCESLAUS SCHOOL**

227 Main St E, New Prague, MN 56071

PH 952-758-3133 FAX 952-758-2958

**LITTLE SPIRITS PRESCHOOL**

On campus of SWS ~ 1950's building

952-758-0480

**MAINTENANCE DEPARTMENT**

952-758-2327

**MEETINGS & EVENTS CALENDAR**

WEEK OF FEBRUARY 18-24, 2019

**Monday, February 18:** No School & Offices closed  
Soup Supper, 4:30-7:30 pm – SW Church Basement

**Tuesday, February 19:**  
1st Option Parent Mtg Grd 2 Eucharist,  
6:15-7:30 pm – Parish Activities Center

**Wednesday, February 20:**  
Early Morning Scripture Study, 7-8 am  
– Parish Office Dining Room

Amazed & Afraid, 8:45-9:45 am – SW Chapel  
Morning Scripture Study, following 8 am Mass  
– Parish Office Dining Room

Disciples of Christ, 6:15-7:30 pm – Campus Wide  
Amazed & Afraid, 6:15-7:15 pm – SW Chapel

2nd Option Parent Mtg Grd 2 Eucharist,  
6:15-7:30 pm – Parish Activities Center

Junior Youth Alive, 6:30-8 pm  
– Parish Office Upper Parlor

Adult Bells & Choir – Choir Room

**Thursday, February 21:**  
Amazed & Afraid, 6:15-7:15 pm – SW Chapel  
NPACC Book Club, 6:30-8 pm  
– Parish Office Dining Room

Bereavement Support Grp, 7-8:30 pm  
– Parish Office Bldg, Deacon Bob's Office

**Friday, February 22:**  
Adoration, 9 am-midnight – SW Chapel

**Saturday, February 23:**  
Scripture Review w/Fr. Kevin, 8:30-10 am  
– Pius X Room, Church Basement

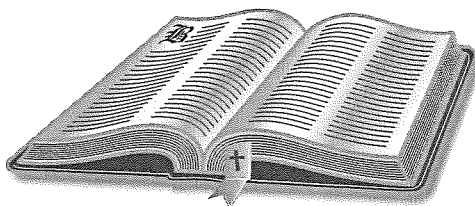
Bean Bag Tournament, 9 am-4 pm – Gym

**Sunday, February 24:**  
Children's Liturgy of the Word at 8:30 and  
10:30 am Masses – SW Chapel

W.O.N. Liz Kelly, 6-8 pm – Parish Activities Center

**SCRIPTURE READINGS**

WEEK OF FEBRUARY 18-24, 2019

**Monday, February 18:**

GN 4:1-15, 25 / MK 8:11-13

**Tuesday, February 19:**

GN 6:5-8; 7:1-5, 10 / MK 8:14-21

**Wednesday, February 20:**

GN 8:6-13, 20-22 / MK 8:22-26

**Thursday, February 21:**

GN 9:1-13 / MK 8:27-33

**Friday, February 22:**

1 PT 5:1-4 / MT 16:13-19

**Saturday, February 23:**

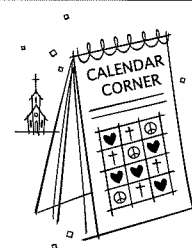
HEB 11:1-7 / MK 9:2-13

**Sunday, February 24:**

1 SM 26:2, 7-9, 12-13, 22-23 /  
1 COR 15:45-49 / LK 6:27-38

**CHURCH OF ST. WENCESLAUS  
CALENDAR CORNER**

Thank you to the Following Sponsors:  
**Steve Skluzacek Construction, Inc.,**  
**Strike Force Bowl and ProShop &**  
**Busch Bros. CNC Machining**

**Date:**

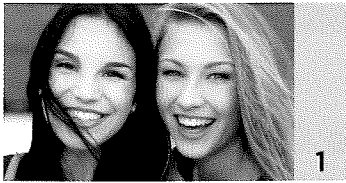
Feb. 6, 2019

**Winner:**

Tom & Barb  
Zweber



# WE ACCOMPLISH MORE TOGETHER



1



2



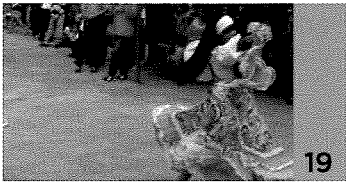
3



4



20



19



18



17



16



15



14

## THE MINISTRIES

1. Abria Pregnancy Resources \$50,000
2. American Indian Ministry \$200,000
3. Archdiocesan Council of Catholic Women \$25,585
4. Campus Ministry - Newman Center \$264,000
5. Campus Ministry - Saint Paul's Outreach \$11,000
6. Catholic Charities \$700,000
7. Deaf Ministry \$39,733
8. Elementary School Support / Scholarships \$1,703,125
9. Evangelization \$150,000
10. High School Scholarships \$800,000
11. Hospital Chaplains \$600,000
12. Latino Ministry \$350,000
13. Marriage, Family & Life \$256,000
14. Parishes \$1,840,000
15. Prison Ministry \$32,000
16. Rachel's Vineyard Twin-Cities \$26,875
17. St. Vincent de Paul Society \$50,000
18. The Seminaries of Saint Paul \$1,063,807
19. Venezuelan Mission \$110,000
20. Youth and Young Adult Ministry \$64,000



5



6



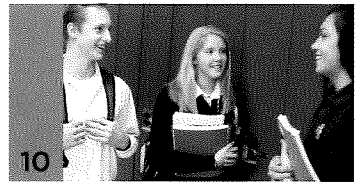
7



8



9



10



13



12



11

**FOR MORE INFORMATION** on these 20 ministries please go to our website: [www.csafspm.org](http://www.csafspm.org)  
**FOLLOW US ON FACEBOOK:** <https://www.facebook.com/catholicservicesappeal/?fref=ts>

**12805 Highway 55, Suite 210 Plymouth, MN 55441 T: 612-294-6622**



# WHAT WE DO

In response to the Gospel call to serve the poor and spread the Good News, the Catholic Services Appeal Foundation of the Saint Paul and Minneapolis Area (CSAF) works as Christ's hands and feet throughout the 12-county Archdiocese. We are an independent non-profit organization that partners with 20 varied outreach ministries, thousands of individual donors, and over 185 Catholic parishes. Together, we serve the poor, support life, and strengthen the Catholic faith. We invite you to learn more about each of the vital ministries we serve, and to join us in transforming lives through the Gospel!

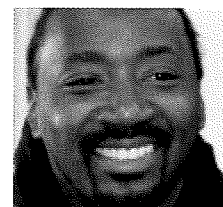


## **CLAUDIA:** LATINO YOUTH MINISTRY

I feel very at peace in the Catholic Church and I can sense the truth through all of her teachings. Latino youth want to know the truth; they want to be challenged and they want you to be honest with them. They want answers for why we do and believe what we do.

## **WAYNE:** ST. VINCENT DE PAUL SOCIETY

There's a calling...to feed and to clothe....Coming from a humble background, being in the position where I needed the assistance, there's nothing more wonderful for me [than] to be able to provide those services to others. We invest in people. God has given them gifts and abilities and our job is to help cultivate those so that they can go out and be a blessing to society.



## **VICTORIA:** RACHEL'S VINEYARD-TWIN CITIES

People think having an abortion is not a big deal...it is a big deal. It's not just something that you do and move on with your life. I tried that.... From the outside, it looked like my life was normal, but inside there were places that I couldn't go....I am so grateful I gathered the courage to go on the retreat because I received very deep healing. I felt totally loved by God, totally forgiven by God. It's all been so affirming and so real...the freedom, it goes right to your heart.

20 Ministries. One Faith.

UNIFIED WE  
**RiSE**



<p><b>Patty's Place</b></p> <p>• Specialty Coffees • Fresh Pastries • Hand Dipped Ice Cream • Cake Decorating</p> <p>108 E Main Street #1 New Prague 952-758-5808 Open 7 Days A Week</p>	<p><b>NPCL</b> (New Prague-Osaka-Louisville) <i>Mutual Insurance Company</i></p> <p>205 County Road 37 New Prague, MN 56071</p> <p><b>952-758-5964</b> www.npclinsurance.com</p> <p>Competitive Rates for Farm &amp; Home <b>Since 1882</b></p>	<p><b>SKLUZACEK</b></p> <p>Cabinetry &amp; Woodworking</p> <p>Dave Skluzacek • 612-986-8443 New Prague, MN</p>	<p><b>First Bank &amp; Trust</b></p> <p>1101 1st Street SE, New Prague • 952-758-4491 BANKeasy.com</p> <p>MEMBER FDIC</p>
<p><b>NEW PRAGUE FAMILY &amp; SPORTS CHIROPRACTIC CENTER</b></p> <p>Dr. Mike Kilpatrick 952-758-4121</p>	<p><b>Jon P. Colling, D.D.S.</b> <b>Thomas W. Smyth, D.D.S.</b> <b>Ruth Peterka, D.D.S.</b> newpraguedentist.com</p> <p>OFFICE HOURS MON-FRI 211 Cty. Rd. 37 New Prague 952-758-2376</p>	<p><b>Scott &amp; Jenny Smisek</b></p> <p><b>JS Mechanical Inc.</b> New Prague, MN 952-758-2986 scott@sjsmechanicalinc.com</p>	<p><b>COMMITMENT TO GETTING RESULTS.</b></p> <p><b>WORNISON GOGGINS,</b> Attorneys   Advisors   Advocates</p> <p>119 E. MAIN ST., NEW PRAGUE <b>952-758-4161</b> WWW.LAWYERSNP.COM</p> <p><b>BACK and NECK CLINIC of NEW PRAGUE</b> Dr. Laurie A. Reiner Hughes Dr. Jeremy Tupy DOCTORS OF CHIROPRACTIC Located across from The New Prague Times 201 East Main Street 952-758-5135</p>
<p><b>Bruzek</b></p> <p>FUNERAL HOME Serving With Compassion Since 1903 Steve and Mary Frost Cremation &amp; Funeral Planning 952-758-4949</p>	<p><b>MAIN ST. DENTAL</b> Family Dentistry &amp; Orthodontics</p>	<p><b>Edina Realty.</b></p> <p><b>Pat Sullivan</b> REALTOR® 952.457.0479 patsullivan@edinarealty.com www.edinarealty.com/pat-sullivan-realtor</p>	<p><b>MARQUARDT JEWELERS</b></p> <p>New Prague</p>
<p><b>Parkview Medical Clinic</b></p> <p>Daniel R. Berg, MD Michael P. O'Rourke, MD Jean Craig, MD Heather Hamernick, MD New Patients Welcome Same Day Appointments Available Saturday Morning Appointments www.parkviewclinic.com <b>952-758-2535</b></p>	<p><b>NEW PRAGUE AUTO REPAIR</b> www.NewPragueAutoRepair.com</p> <p>Since 1974 Gary Kohoutek, Owner 952.758.4471 205 4th Ave. SW New Prague, MN 56071</p>	<p><b>New Prague "Gentle Dental Care"</b></p> <p><b>Dr. Gregory R. Dvorak, D.D.S.</b> Cosmetic &amp; Sedation Dentistry 136 West Main Street, New Prague 952-758-3003 • www.dr.dvorak.com</p>	<p><b>BENDZICK MINI STORAGE</b> Brand New Storage Facility Excellent Secure Location 1 Mile North of New Prague on Hwy. 21 <b>507-334-3422</b></p> <p><b>STEVENI TUPY</b> REALTOR® 952-486-3082 www.StefTupy.com Edina Realty StefeniTupy@EdinaRealty.com</p> <p><b>Kneip &amp; Associates INSURANCE</b> medical dental life <b>Daniel Kneip 952-758-3049</b> kneip.ins@gmail.com Committed to product understanding and personal service.</p> <p><b>NEW PRAGUE MINI STORAGE, INC.</b> From 5x10 thru 10x40. Climate Controlled. Now Available. Easy access, 7 days a week, 24 hours a day www.NewPragueMiniStorage.com <b>952-758-7819</b></p>
<p><b>Ambroz Plumbing, Inc.</b> Paul Ambroz</p> <p>New Construction - Remodel - Service <b>952-758-6265 • Cell 952-292-4413</b> Lic# 059407-PM</p>	<p><b>TUPY INSURANCE AGENCY, INC.</b></p> <p>For Your Personal or Business Insurance Needs We are here to Serve You!</p> <p>111 East Main Street New Prague, MN <b>952-758-2433</b></p>	<p><b>This Space For Sale</b> <b>Call 952-758-4435</b></p>	<p><b>SAXE</b> BELLE PLAINE</p> <p><b>Matt Saxe Chevrolet Buick</b></p> <p>909 Enterprise Drive Belle Plaine, MN 56011 <b>952-873-2234</b> www.saxechevy.com</p>
<p><b>MACH LUMBER</b></p> <p>Paul Kratochvil, Owner Convenient - We Deliver! <b>952-758-3235</b> M-F 7-5; Sat. 8-Noon</p> <p>201 Second Ave. SW, New Prague 1 block S of Main St, across from ConAgra</p>	<p><b>5% Commission Full Service</b> KubesRealty.com</p>	<p><b>YOU CALL... WE HAUL...</b></p> <p>Complete Household Transfer Licensed • Bonded Reasonable Rates</p> <p>TIM or JOHN 952-758-2552 16264 310 St. New Prague</p>	<p><b>Marlene Mushitz, CRS, GRI, CDPE</b> 1301 1st St. NE New Prague <b>612-978-2222</b> www.DynamicMarlene.com</p>
<p><b>Odenthal Landscaping</b></p> <p>Retaining Walls, Patios &amp; Much More For All Your Landscaping Needs</p> <p>New Prague, MN www.odenthallandscaping.com Phone &amp; Fax: 507-364-5460 Cell: 612-703-4803</p>	<p><b>NEW PRAGUE VETERINARY CLINIC</b> Dr. William F. Vollmar Dr. Katie Vollmar Boarding Services 1003 East Main St. New Prague, MN 952-758-2881</p>	<p><b>AMERICAN FAMILY INSURANCE</b></p> <p>Melissa Kreuser, Agent Bus: (952) 758-5460 1301 1st St Ne, New Prague</p>	<p><b>Wacker Drywall, Inc.</b> Hand Troweled Ceilings <b>Roger Wacker</b> Home: 952-758-8726 Cell: 612-978-9648 New Prague</p>
<p><b>DOUG VAYDA</b> Specialist in the practice of Orthodontics 101 Central Ave. New Prague 952-758-6999</p>	<p><b>MALA STRANA</b> REHABILITATION CENTER &amp; Assisted Living New Prague • 952-758-2511</p>	<p><b>Suel Printing Company</b> Pleased to be the printers of your Parish Bulletin. 200 Main St. East, New Prague 952-758-4435 awann@suelprinting.com</p>	<p><b>SKLUZACEK CONSTRUCTION, INC.</b></p> <p>Steve Skluzacek, Owner #0004897 <b>952-758-4158</b></p> <p><b>New Prague Dental Center</b> "Dental care for the entire family" Jeremy Derksen, D.D.S. Kathleen J. Garry, D.D.S. 101 Lexington Ave. So. <b>952-758-4741</b></p>
<p><b>Positively Impacting Peoples' Lives Since 1881</b></p> <p><b>Roundbank</b></p> <p>New Prague: 952-758-BANK (2265) • Farmington: 651-463-8300 www.roundbank.com</p> <p>Member FDIC EQUAL HOUSING LENDER</p>			
<p><b>For Sale Call 952-758-4435</b></p>	<p><b>Place Your Ad Here! 952-758-4435</b></p>		
<p>Quality appliances and service you can trust from your hometown appliance source</p> <p><b>40th Anniversary</b> 1977-2017</p> <p><b>MAYTAG KitchenAid</b> (952) 445-2916 Or online at MyApplianceSource.com On Hwy 169 in Shakopee We may be smaller...but we try harder</p> <p><b>Whirlpool</b></p> <p><b>my APPLIANCE SOURCE</b> SALES • SERVICE</p>			
<p>Securities &amp; Advisory Services offered through Michael Traxler Wealth Management, LLC a Registered Investment Advisor in the State of Minnesota.</p> <p><b>Michael P. Traxler Financial Advisor</b> 222 Main Street East New Prague, MN 56071 <b>952-758-8060</b></p>			