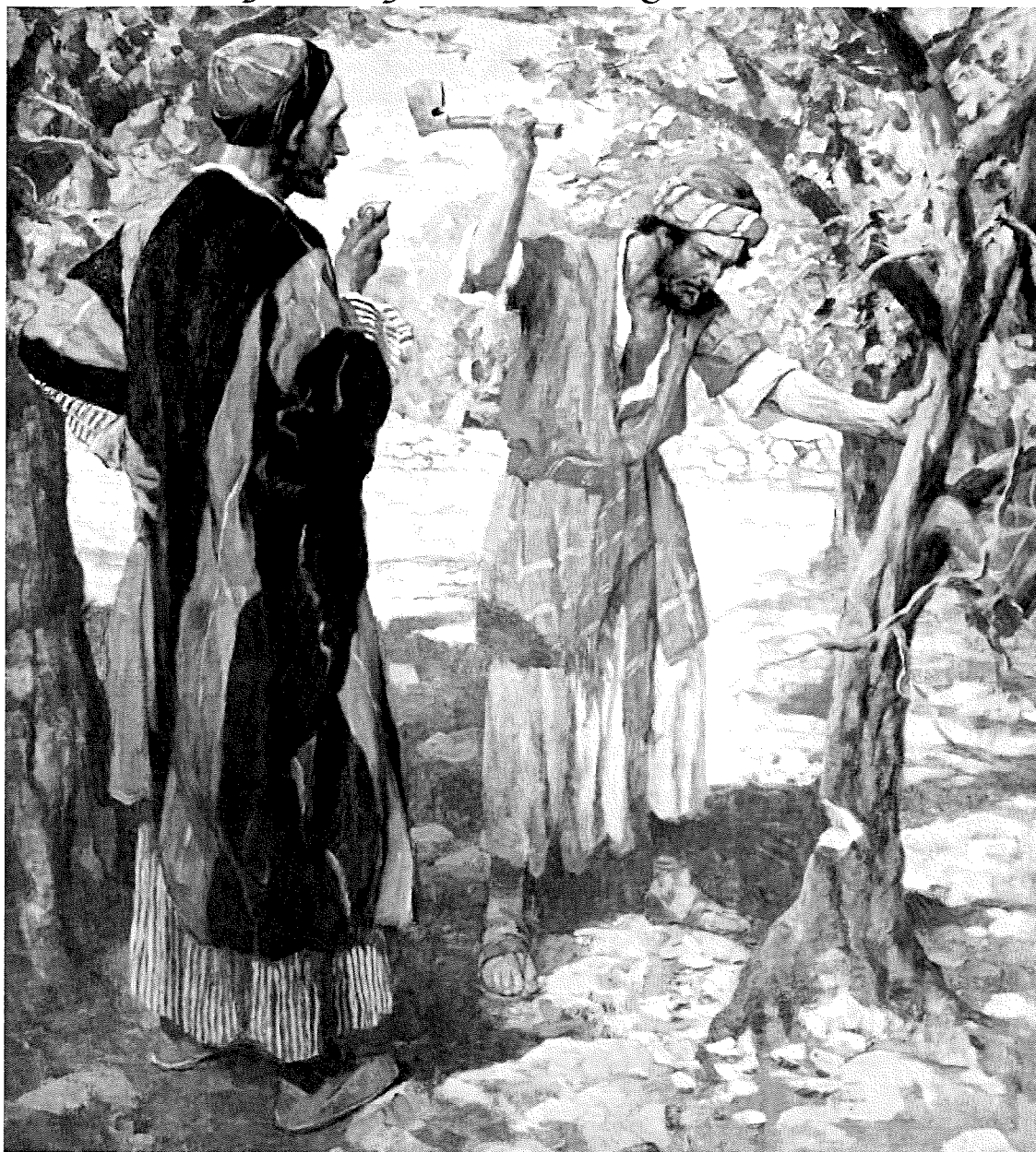


## THIRD SUNDAY OF LENT

MARCH 24, 2019

*Today's Gospel Reading Luke 13:1-9*



*"But I tell you, if you do not repent, you will all perish as they did!"*  
Luke 13:5

**NEW PRAGUE AREA CATHOLIC COMMUNITY**  
*Three Sites of Worship, One Community of Faith*

Including St. Wenceslaus &  
The Western Catholic Community of St. John the Evangelist and St. Scholastica

215 MAIN STREET EAST ■ NEW PRAGUE, MN 56071 ■ 952-758-3225 ■ NPCATHOLIC.ORG

## We welcome you...

Welcome to the greater New Prague Area Catholic Community which includes the Church of St. Wenceslaus and the Western Catholic Community of St. John the Evangelist and St. Scholastica. We are happy you are here. Should you be visiting just for today, WELCOME! If you are seeking a church home, we would be honored to have you consider joining our faith community. If you are interested in a membership, please phone the parish office for assistance and registration. If you are over the age of 21, we ask that you register. Please feel free to stop by the parish office during office hours to register or you may do so online. Again, we are happy you are here.

## At the Church of St. Wenceslaus

### PARISH OFFICE HOURS

Monday – Friday 8:30 am to 4:00 pm

### MASS SCHEDULE

#### Weekend Masses

Saturday..... 5:00 pm

Sunday..... 8:30 & 10:30 am

#### Morning Word & Communion

Friday..... 8:00 am

#### Weekday Masses

Monday-Thursday ..... 8:00 am

### SACRAMENTS & OTHER INFORMATION

#### Anointing of the Sick

Available to those who are seriously ill or suffering from a prolonged illness. Call 952-758-3225

#### Confirmation

Preparation required. Call 952-758-0477

#### Reconciliation

Saturdays at 4 pm in the church.

#### Baptism

Preparation required. Call 952-758-3225

#### Marriage

Six months to one year preparation time required.

Call 952-758-3225

#### Rosary

Monday – Friday 7:30 am & Saturday 8:00 am in the church.

#### Fatima Prayer Cell

Monday – Wednesday after 8 am service in the chapel.

#### Adoration

Friday 9:00 am to midnight in the chapel.

#### Early Morning Scripture Study

Wednesday 7:00 to 8:00 am – In Parish Office.

#### Fr. Kevin's Bible Study

Saturdays 8:30 to 10 am – Pius X Room in church basement.

#### Prayer Chain

Judy: 952-758-2220 or Arnita: 952-758-4943

#### BeFrienders

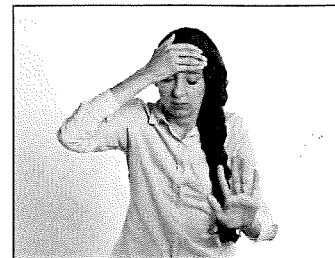
Ann Schoenbauer: 952-758-3456 or

Lois Giesen: 952-758-2138

## An Excerpt from the Discipleship Updates

### Too many words?

*A word to the wise:  
sometimes less is more.*



The number of words coming into our brains daily can be overwhelming, and when we decide to focus on the season of Lent, we can be swamped with possibilities. *The Little Black Book, Living Faith*, the booklet the parish sent home, online daily reflections, homilies...so many words! In our desire to be open to the words God has to speak to our hearts, we can allow ourselves to drown in a sea of words.

In his homily for the Lenten weekday of Tuesday, March 12th, Fr. Eugene shared that the purpose of the School of Lent is to deepen our relationship with the Father, and that is where the disciplines of Lent ~ prayer, fasting and almsgiving ~ lead us. Words can lead us to prayer, of course, but there can be too much of a good thing. Relationships are built on two way communication, and if we are focused on too many words, we can fail to get the one message that God might have for us for the day. That requires quiet.

Here are some ideas to stem the flow:

- Pray to be open to God's message for you.
- Choose a quiet time and place.
- Cut down on social media use.
- Turn off the radio and TV.
- Choose one or two Lenten resources on which to focus, maybe not the same ones every day.
- Open your Bible and read until a word or phrase seems to draw your attention.
- Sit with the words that catch your attention. Ask questions of God. Try to stay with the silence and listen for the voice of God within.
- Don't be discouraged if nothing seems to come to you. Be persistent.
- Be present to God in creation.
- Be still, and know that God is God. (Psalm 46:10)

## Western Catholic Community

### From the Desk of Deacon Bob

We begin the 3rd week of our Lenten journey. The 1st week emphasized the need to set aside time each day to listen to God in silence. The 2nd week called us to examine how we live. Does the way we daily live reflect the values and the way of Jesus, or the values and way of our world? This week we are asked to look at the intent behind the pietistic things we do in our lives.

It was a common belief at the time of Jesus, that if a bad thing happened to someone resulting in death, God was punishing them because of some sin they committed. One of the examples given is the tragedy of a building, the tower of Siloam, collapsing and killing many people. Similarly, it was a common belief that people born with a disability, such as blindness or deafness, were being punished by God for some sin committed by an ancestor. The resulting behavior of the self-righteous toward those afflicted was to look at the afflicted with contempt, and to inflate their own sense of self-righteousness. In the Gospel, Jesus turns and tells the self-righteous that they are hypocrites, for they are no more or less sinful than those who are afflicted by tragedy.

For us today, we need to examine the intent behind the pietistic things we do. For example, is it better or more "holy" to receive Holy Communion on the tongue as opposed to receiving Holy Communion in the hand? No! It matters not to Jesus or the Church how we receive Holy Communion. What is important is that we receive Holy Communion. If our intent of receiving Holy Communion on the tongue is to show others that we are more pious than those who receive in the hand, then our intent in receiving Holy Communion is flawed. For it is focused more on inflating our own self-piety, than on receiving the Lord of Life. In other words, we are placing ourselves first and God second.

This week, a good scripture passage upon which to examine the intent behind why we do the religious things we do is Luke 18:9-14, the parable of the Pharisee and the Tax Collector (Publican). In our prayer and in our religious practices, who do we emulate? The Pharisee or the Tax Collector?

**Deacon Bob Wagner**

*Pastoral Associate*

**New Prague Area Catholic Community**

### Mass Schedule Volunteers - St. John's & St. Scholastica

MARCH 30 & 31, 2019	Saturday St. John's 8:15 PM	Sunday St. Scholastica 8:00 AM	Sunday St. John's 10:00 AM
<b>Lector</b>	Carol Weiers	Marlene Dohmen	Jim Widmer
<b>Eucharistic Ministers</b>	Sandy Kubes	Cindy Jirak, Marlene Dohmen & Judy Pauly	Lori Wooten, Jill Holden & Jonila Weiers
<b>Servers</b>	Mitchel & Hunter Pomije	Julia Schoenecker & Matthew Schoenecker	Katelynn & Craig Brezina, Avery & Jordyn Marsh
<b>Gift Bearer Family</b>		Pete Schoenecker Family	Ron Solheid Family

### Important Information

#### Weekend Masses

Saturday.....	8:15 pm	St. John's
Sunday.....	8:00 am	St. Scholastica
Sunday.....	10:00 am	St. John's

#### SACRAMENTS & OTHER INFORMATION

##### Reconciliation

Saturday.....	7:45 pm	St. John's
---------------	---------	------------

##### Baptism & Confirmation

Preparation required. Call the Parish Office.

##### Anointing of the Sick

Call the Parish Office.

##### Marriage

Prep required. Call the Parish Office.

##### Adoration

Fridays 9:00 am to midnight at St. Wenceslaus Daily Chapel

#### WESTERN CATHOLIC COMMUNITY OFFICE

20087 Hub Drive, New Prague 56071  
952-758-4642

#### Deacon Bob Wagner

##### Pastoral Associate

952-758-3225 (O) 612-703-0808 (C)  
Bob.Wagner@npcatholic.org

##### Hall Rental:

**Patty Giesen** 952-758-3008 or email:  
kpgiesen003@gmail.com

##### Prayer Chain WCC:

<b>Carol Bauer</b>	952-457-4057
<b>Noreen Giesen</b>	952-758-2608
<b>Marlene Dohmen</b>	952-492-6879

#### COLLECTION INFORMATION

##### WESTERN CATHOLIC COMMUNITY

**SUNDAY, MARCH 17, 2019**

<b>Total Collected 3/17/19</b> .....	\$3,951
Collections at Mass .....	\$2,936
Electronic Collections.....	\$1,015
Over Budget for the Week .....	+\$797
Actual Collections YTD.....	\$109,138
Under Budget YTD .....	-\$4,400
Budget for Next Week .....	\$3,154

**Thank you for your support!**

**Bulletin E-mail: [info@npcatholic.org](mailto:info@npcatholic.org)**

**Website: <http://www.npcatholic.org>**

## PARISH AND AREA NEWS

### Suicide Grief Support Group

Friends, family, and anyone who has lost a loved one to suicide are invited to attend the monthly meeting of the Suicide Grief Support Group. The meeting will be held on Tues., March 26th from 7-8:30 pm at the Mayo Clinic Health System in New Prague. Please enter through the Emergency Room doors (southwest entrance) and take the southeast elevator (#2) to the lower level (B) and follow the signs to the Jameen Mape Conference Center. No fee or pre-registration is required. Please contact Tom Handrich at (952) 445-0107 for additional information.

### Will you be just getting back from spring break and don't want to cook?

Join us for 20YMK19 on March 31st.

**What:** Teen Mass ~ 5 pm and Food Trucks ~ Pharaoh's Gyros, Samurai Teppanyaki, Uncle B's Last Chance BBQ Shack!

**Who:** YOU!

**Why:** Why not?

### Minnesota FoodShare's March Campaign

is the largest food drive in the state and relies on the generosity like yours to be the heart of the campaign. All monetary and food donations go directly to Peace Center Food Shelf to help those in need in our community. Please consider donating. There is a collection box at the back of the church. Peace Center is in need of many items including: seasonings/spices, canned meat and fruit, condiments (mayonnaise, mustard, and ketchup), breakfast items (cereal hot/cold, bars) salad dressing (all varieties), and personal care items (shampoo, soap, toothpaste & deodorant). This is the last week to donate!

### CCW News:

Women of the Parish and CCW Members, Thank you for your understanding on the cancelation of the Spiritual Day here at St. Wenceslaus. The forecast indicated bad weather and for the safety of all travelers, we postponed it to April 11th beginning at 6:30 pm at Immaculate Conception Church in Lonsdale. Please bring items for the Silent Auction; proceeds go to help our Faith Formation program. If you would like to attend, please email or call Mary at [mary.wick@swsaints.org](mailto:mary.wick@swsaints.org) or (507) 744-5154 and leave a message. If you would like to carpool, please let me know. Fliers with information are on the church entrance bulletin boards.



### Stations of the Cross

For Catholics throughout the world, the Stations of the Cross are synonymous with Lent, Holy Week, and especially, Good Friday. This devotion is also known as the "Way of the Cross," the "Via Crucis," and the "Via Dolorosa." It commemorates 14 key events on the day of Christ's crucifixion. It honors His final walk through the streets of Jerusalem, carrying the Cross. Don't miss these last opportunities for Stations of the Cross this Lent.

### NPACC's Stations of the Cross

St. Wenceslaus: Fri. Mornings ~ March 29,  
April 5 & 12 @ 8:20 AM

St. Wenceslaus: Friday evenings ~ April 5 & 12 @ 7 PM

St. John's: Fri. Evenings ~ March 29 @ 7 PM

St. Scholastica: Fri. Evenings ~ April 5 @ 7 PM

### Live Stations of the Cross

St. Wenceslaus: SWS Wed., April 10 @ 1:30 PM

### Global Solidarity Sunday: Next Weekend

Next weekend is Global Solidarity Sunday as we celebrate "Taste and see the goodness of the Lord." This is a unique opportunity to share the goodness of the Lord in solidarity with your brothers and sisters overseas. We are invited to offer gifts of support by contributing to this collection for four global initiatives designated by the U.S. Catholic Bishops. Please be as generous as you are able and support your brothers and sisters overseas. Collection envelopes can be found in the pews.

### ~ COLLECTION INFORMATION ~

#### St. Wenceslaus Site

SUNDAY, MARCH 17, 2019

<b>Total for 3/17/19</b> .....	\$21,505
Collections at Mass.....	\$9,833
Electronic Collections.....	\$11,672
Over Challenge for Week.....	+\$6,564
Actual Collections YTD.....	\$598,237
Under Challenge YTD.....	-\$15,207
Challenge for Next Week.....	\$14,940

### 12th Annual Roman Barten Memorial Benefit

Please save the date for the **12th Annual Roman Barten Memorial Benefit Breakfast on Sun., March 31st, at the New Prague KC Hall**. This year, all proceeds go to the care of 2-year-old Abigail Nelson, daughter of Andrew and Laurie Nelson of New Prague. Abigail Joy was diagnosed with Trisomy 18 while in her mother's womb. Doctors gave NO HOPE to her parents, telling them that their baby will die. Abby defied medical expectations and LIVED. **HOW TO HELP ~ JOIN US** on Sun., March 31st, from 8 am to 1 pm at the New Prague KC Hall. **VOLUNTEER** your time or **DONATE** an item for the drawing. **MONETARY DONATIONS are gratefully accepted. Donations can be sent to "Abigail Nelson Benefit Account" at First Bank and Trust New Prague, 1101 1st Street SE, New Prague. All donations are anonymous.**

### Lenten Penance Fair

Divine Mercy Catholic Church in Faribault will be hosting their Lenten Penance Fair on Tues., April 2nd, from Noon to 7:30 pm. Many priests will be available to hear your confession: private or face-to-face, English-speaking or Spanish-speaking. Please come and receive this beautiful gift of healing. Call the DMCC parish office if you have questions: (507) 334-2266.

### SUPPORT OUR PATRONS

who make this bulletin possible by their advertising.

**MATT SAXE CHEVROLET BUICK**

**The Passion of Jesus in Music, Word & Light**

St. Mark's Church, Shakopee

April 4 ~ Spanish, April 5 &amp; 6 ~ English at 8 pm

Prelude music begins at 7:40 with performance at 8:00.

Admission is free. People of all faiths are encouraged to attend. [www.ShakopeePassionPlay.org](http://www.ShakopeePassionPlay.org)**Visiting Women Religious Communities**


Sat., April 6th, from 8 am-6 pm

Visit different religious communities in the Twin Cities to meet, learn, share meals, and pray with Catholic Sisters. We will visit various local communities, including the School Sisters of Notre Dame, Sisters of St. Joseph, and Visitation Sisters. Carpooling will be arranged. For more information or to register, contact Sr. Jill at (651) 696-2873 or email [junderdahl@csjstpaul.org](mailto:junderdahl@csjstpaul.org).

**FAITH FORMATION AND YOUTH MINISTRY****20YMK19 is all set for March 31!**

Join us for Teen Mass at 5 pm ~ with Rite of Sending for second year confirmation candidates and their sponsors. Followed by shenanigans and 3 food trucks! The first 5 people to post on the NPACC Youth Ministry Facebook Page citing the reason they would like to win will win \$5 in FoodTruckBucks!

20YMK19  
MARCH 31  
TEEN MASS  
RITE OF SENDING



PHARAOH'S GYROS  
SAMURAI TEPPANYAKI  
UNCLE B'S LAST CHANCE BBQ SHACK

Mass 5:00  
Shenanigans 6:00  
215 Main St E  
New Prague, MN 56071  
call Pamela for more information @ 952.758.0477  
all are welcome

**Volunteers Needed for First Eucharist Retreat**

We soon will be welcoming a new group of children to our communal table. In preparation for this day, we host a First Eucharist retreat and we need a little help. The children and a parent will travel from station to station and we would like to have adults at each station. The retreat is Sat., April 6th, from 9-Noon. To volunteer, call Laura at (952) 758-5131.

**Vacation Bible School**

Plans are in the making for another fun, faith-filled Bible School entitled *Shipwrecked, Rescued by Jesus*. This camp will be mornings June 24-28. Forms will be available soon. ***In the meantime, we are looking for two key adult players.*** One will work with Stacy Moser on providing our shipmates with tasty snacks each of the five days of camp. The other person must love to play! We are looking for someone to work with Marco, the Youth Minister from FaithPoint, on running our Games Station. Join us for this fun week of summer and see God in action. For more information or to volunteer, contact Laura at (952) 758-5131.

**SCHOOL NEWS from SWS****Financial Assistance**

Go to [TADS.com](http://TADS.com) to apply. Due May 1st. (Tax returns must be submitted.) Notification for qualification ~ May 15th. Open to all families.

**The Schulze Early Learning Scholarship**

is open to students entering the 4/5-year-old preK class next fall, making them one year away from entering kindergarten. [schulzefamilyfoundation.org](http://schulzefamilyfoundation.org)

**WESTERN CATHOLIC COMMUNITY  
St. John's & St. Scholastica****Stations of the Cross**

Let us walk the Way of the Cross together as we pray the Stations of the Cross at 7 pm on Fri., March 29th, at St. John's, and on Fri., April 5th, at St. Scholastica. At the cross her station keeping, Stood the mournful Mother weeping, Close to Jesus to the last.

**The Solemnity of the Annunciation of the Lord**

March 25th ~ In the words of Pope Francis, "The Virgin Mary teaches us what it means to live in the Holy Spirit and what it means to accept the news of God in our life. She conceived Jesus by the work of the Holy Spirit, and every Christian, each one of us, is called to accept the Word of God, to accept Jesus inside of us, and then to bring him to everyone." May it be done to me according to your word. (Luke 1:38)

**Our Lady of Good Help CCW Meeting**

Our Lady of Good Help Council of Catholic Women meeting is on Mon., April 1st at St. John's Koenig Hall. Rosary starts at 6:15 with lunch at 6:30 pm. ALL women of the parish are encouraged to come and ALL are welcome! Please continue to bring hygiene items that will be donated to the Peace Center. Lunch committee is: Amy Lemke, Ann Koenig, Jean McDermand, Kris Knutson, Ann Hartman and Mary Chromy.

**Is this not the fast which I choose... to share your bread with the hungry, and bring the homeless poor into your house; when you see the naked, to cover him, and not to hide yourself from your own flesh?**

*Isaiah 58:6a, 7*

**Share your bread with the hungry:**

**Operation Rice Bowl** is the Lenten program of Catholic Relief Services, the international humanitarian agency of the U.S. Catholic community that serves throughout the world, with relief and development programs for some of the poorest families and communities. It makes one proud to be Catholic! You can contribute to Catholic Relief Services online or by filling your Rice Bowl. There are still some available in the back of church.



We have been supplying and serving a meal every second Saturday for 25 years at the **Dorothy Day Center** in St. Paul. If you wish to volunteer, please contact Norb Sticha 952-758-3888. Be sure to ask about all of the exciting changes taking place.

**The Peace Center** in New Prague is a way to serve people in need closer to home. Non-perishable food items and cash donations are always welcome. Founded in 1983, the Peace Center serves the community by helping nearly 5,000 individuals per year with their everyday needs. March is Food Share month, a great time to donate. Boxes for donation drop off can be found in the back of church.



**Bring the homeless poor into your house:**

**Families Moving Forward**



Hope House is our local site of Families Moving Forward, a program that gives temporary accommodations to homeless families with children and helps them find a home and employment, if needed. We need volunteers to spend time with families, donate needed items, and provide meals. We

will be serving families April 21-May 5. If you would like to volunteer, here are a couple of ways to help:

If you are a new volunteer, hosting opportunities include evening host: 5 pm - 9 pm, **overnight host** 8:30 pm - 5 am, **breakfast host**: 5 am-7 am or **Saturday host** (various shifts). **Training is essential for new volunteers.** Training will be provided from 6:30-8 pm Monday, April 8, OR Saturday, April 12, 9-10:30 at Hope House, 305 Columbus Ave. N. If you plan to attend training, please call Mary Higgins at 952-240-1604.

**If you would like to donate, prepare, and help serve part of an evening or Saturday meal,** call Ruth Dols at 952-758-2050. It's good to work with another volunteer on a meal.

**We use Sign Up Genius to schedule returning volunteers.** If you have volunteered before, you will receive an email with instructions on how to sign up. Call Rosella Kes with questions. 952-758-3578.

**Clothe the naked:**

**Hands of Friendship** is a local thrift store that supports a mission in Haiti as well as serves the surrounding community. Drop off your usable clothing and household goods to share with those who have less. It is located just east of New Prague on Hwy 13. See <http://handsoffriendship.net>



**LITURGIES & PRIEST'S MASS INTENTIONS**

INCLUDES ALL CHURCH LOCATIONS  
WEEK OF MARCH 25-31, 2019

**Rosary at St. Wenceslaus**  
**MONDAY – FRIDAY at 7:30 am**  
**SATURDAY at 8:00 am**

**Monday, March 25 ~ Annunciation of the Lord**

8:00 am..... Mass – SW

**Tuesday, March 26**

8:00 am..... Mass – SW

**Wednesday, March 27**

8:00 am..... Mass – SW

**Thursday, March 28**

8:00 am..... William Soderlund† – Mass – SW

**Friday, March 29**

8:00 am..... Word & Communion – SW

8:20 am..... Stations of the Cross – SW

7:00 pm..... Stations of the Cross – SJ

**Saturday, March 30**

4:00 pm..... Confession – SW

5:00 pm..... Lisa Pany – Mass – SW

7:45 pm..... Confession – SJ

8:15 pm..... Ron Giesen† – Mass – SJ

**Sunday, March 31**

8:00 am..... Ronald Kaufenberg† – Mass – SS

8:30 am..... Evelyn Ambroz†

..... Russell Sindelar† – Mass – SW

10:00 am..... Mass – SJ

10:30 am..... Wencel Kubes† – Mass – SW

5:00 pm..... Teen Mass – SW

**STAFF DIRECTORY** NEW PRAGUE AREA CATHOLIC COMMUNITY**Rev. Kevin Clinton**

Pastor

952-758-3225

Kevin.Clinton@npcatholic.org

**Rev. Eugene Theisen**

Associate Pastor

952-758-0469

Eugene.Theisen@npcatholic.org

**Deacon Bob Wagner**

Pastoral Associate

952-758-0463

Bob.Wagner@npcatholic.org

**Peter Guzulaitis**

Parish Business Administrator

952-758-0465

Peter.Guzulaitis@npcatholic.org

**Ruth Weinandt**

Parish Accountant &

Pastoral Ministry Associate

952-758-0466

Ruth.Weinandt@npcatholic.org

**Laura Schoenecker**

Faith Formation Director

Pre-K through Adult

952-758-5131

Laura.Schoenecker@npcatholic.org

**Pamela Sherlock**

Youth Ministry & Confirmation Coordinator

952-758-0477

Pamela.Sherlock@npcatholic.org

**Mary Higgins**

Adult Faith Formation Associate

952-758-0464

Mary.Higgins@npcatholic.org

**Kim Doyle**

St. Wenceslaus School Principal

952-758-3133

Kim.Doyle@swsaints.org

**Jolene Busch**

Preschool Director

952-758-0480

Jolene.Busch@swsaints.org

**Debbie Gregor**

Director of Liturgical Music at SW

952-758-4207

Debbie.Gregor@npcatholic.org

**Lisa Levenson**

Parish Administrative Assistant

952-758-3225

Lisa.Leverson@npcatholic.org

**PARISH BUSINESS OFFICE**

215 Main St E, New Prague, MN 56071

PH 952-758-3225 FAX 952-758-2960

**FAITH FORMATION OFFICE**

On campus in Parish Activity Center

**ST. WENCESLAUS SCHOOL**

227 Main St E, New Prague, MN 56071

PH 952-758-3133 FAX 952-758-2958

**LITTLE SPIRITS PRESCHOOL**

On campus of SWS ~ 1950's building

952-758-0480

**MAINTENANCE DEPARTMENT**

952-758-2327

**MEETINGS & EVENTS CALENDAR**

WEEK OF MARCH 25-31, 2019

**Monday, March 25:**

Read the Bible in One Year, 6:30-8 pm

– Parish Office Dining Room

**Tuesday, March 26:**

No Events

**Wednesday, March 27:**

Early Morning Scripture Study, 7-8 am

– Parish Office Dining Room

Morning Scripture Study, following 8 am Mass

– Parish Office, Deacon Bob's Office

**Thursday, March 28:**

Men's Group, 6:30-8 pm – Parish Office

Upper Parlor

**Friday, March 29:**

Adoration, 9 am-midnight – SW Chapel

**Saturday, March 30:**

Scripture Review w/Fr. Kevin, 8:30-10 am

– Pius X Room, Church Basement

**Sunday, March 31:**

Children's Liturgy of the Word at 8:30 and

10:30 am Masses – SW Chapel

Passion Pantomime Youth Rehearsal,

12:30-2:30 pm – SW Church

Passion Pantomime Adult Rehearsal,

2:30-4:30 pm – SW Church

Confirmation Class, 3:30-5 pm – Campus Wide

Youth Ministry End of Year Shenanigans,

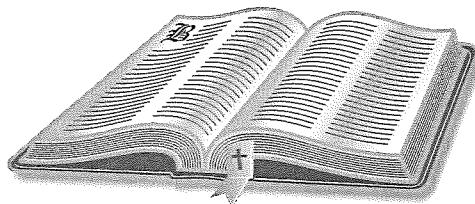
6-7:30 pm – PAC Foyer

NPACC Book Club Lenten Program, 6-8 pm

– Parish Office Dining Room

**SCRIPTURE READINGS**

WEEK OF MARCH 25-31, 2019

**Monday, March 25:**

IS 7:10-14; 8:10 / HEB 10:4-10 / LK 1:26-38

**Tuesday, March 26:**

DN 3:25, 34-43 / MT 18:21-35

**Wednesday, March 27:**

DT 4:1, 5-9 / MT 5:17-19

**Thursday, March 28:**

JER 7:23-28 / LK 11:14-23

**Friday, March 29:**

HOS 14:2-10 / MK 12:28-34

**Saturday, March 30:**

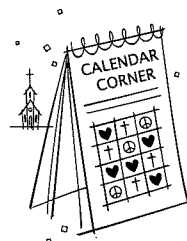
HOS 6:1-6 / LK 18:9-14

**Sunday, March 31:**

JOS 5:9A, 10-12 / 2 COR 5:17-21 /  
LK 15:1-3, 11-32

**CHURCH OF ST. WENCESLAUS  
CALENDAR CORNER**

Thank you to the Following Sponsors:  
**Giesenbräu Bier Co.,**  
**Steve Skluzacek Construction, Inc.**  
**& Strike Force Bowl and ProShop**

**Date:**

March 13, 2019

**Winner:**

Sharon Turek



<p><b>Patty's Place</b></p> <ul style="list-style-type: none"> <li>• Specialty Coffees</li> <li>• Fresh Pastries</li> <li>• Hand Dipped Ice Cream</li> <li>• Cake Decorating</li> </ul> <p>108 E Main Street #1 New Prague 952-758-5808 Open 7 Days A Week</p>	<p><b>NPCL</b> (New Prague-Caska-Louisville) <b>Mutual Insurance Company</b> 205 County Road 37 New Prague, MN 56071 <b>952-758-5964</b> www.npclinsurance.com</p> <p><b>Competitive Rates for Farm &amp; Home</b> <b>Since 1882</b></p>	<p><b>SKLUZACEK</b> Cabinetry &amp; Woodworking Dave Skluzacek • 612-986-8443 New Prague, MN</p> <p><b>TS Mechanical Inc.</b> New Prague, MN 952-758-2986 scott@sjsmechanicalinc.com</p>	<p><b>First Bank &amp; Trust</b> 1101 1st Street SE, New Prague • 952-758-4491 BANkeasy.com</p> <p>MEMBER FDIC</p> <p><b>COMMITMENT TO GETTING RESULTS.</b></p> <p><b>WORNSON GOGGINS, JR.</b> Attorneys   Arbitrators   Mediators 119 E. MAIN ST., NEW PRAGUE <b>952-758-4161</b> WWW.LAWYERSNP.COM</p> <p><b>BACK and NECK CLINIC of NEW PRAGUE</b> Dr. Laurie A. Reiner Hughes Dr. Jeremy Tupy • Dr. Jolene Otremba DOCTORS OF CHIROPRACTIC Located across from The New Prague Times 201 East Main Street 952-758-5135</p>	
<p><b>Bruzek</b> FUNERAL HOME Serving With Compassion Since 1903 Steve and Mary Frost Cremation &amp; Funeral Planning 952-758-4949</p>	<p>Jon P. Colling, D.D.S. Thomas W. Smyth, D.D.S. Ruth Peterka, D.D.S. newpraguedentist.com</p> <p>GENERAL DENTISTRY &amp; ORTHODONTICS</p> <p>OFFICE HOURS MON-FRI 211 Cty. Rd. 37 New Prague 952-758-2376</p>	<p><b>Edina Realty.</b></p> <p><b>Pat Sullivan</b> REALTOR® 952.457.0479 patsullivan@edinarealty.com www.edinarealty.com/pat-sullivan-realtor</p>	<p><b>MARQUARDT</b> JEWELERS</p> <p>New Prague</p>	
<p><b>Parkview Medical Clinic</b> Daniel R. Berg, MD Michael P. O'Rourke, MD Jean Craig, MD Heather Hamernick, MD New Patients Welcome Same Day Appointments Available Saturday Morning Appointments www.parkviewclinic.com <b>952-758-2535</b></p>	<p><b>NEW PRAGUE AUTO REPAIR</b> www.NewPragueAutoRepair.com Since 1974 Gary Kohoutek, Owner 952.758.4471 205 4th Ave. SW New Prague, MN 56071</p>	<p><b>New Prague "Gentle Dental Care"</b> Dr. Gregory R. Dvorak, D.D.S. Cosmetic &amp; Sedation Dentistry 136 West Main Street, New Prague 952-758-3003 • www.dr.dvorak.com</p>	<p><b>BENDZICK MINI STORAGE</b> Brand New Storage Facility Excellent Secure Location 1 Mile North of New Prague on Hwy. 21 <b>507-334-3422</b></p>	<p><b>Kneip &amp; Associates INSURANCE</b> medical dental life Daniel Kneip 952-758-3049 kneip.ins@gmail.com Committed to product understanding and personal service.</p>
<p><b>Ambroz Plumbing, Inc.</b> Paul Ambroz New Construction - Remodel - Service 952-758-6265 • Cell 952-292-4413 Lic# 059407-PM</p>	<p><b>TUPY INSURANCE AGENCY, INC.</b> For Your Personal or Business Insurance Needs We are here to Serve You! 111 East Main Street New Prague, MN <b>952-758-2433</b></p>	<p><b>This Space For Sale Call 952-758-4435</b></p> <p><b>YOU CALL... WE HAUL...</b> Complete Household Transfer Licensed • Bonded Reasonable Rates TIM or JOHN 952-758-2552 16264 310 St. New Prague</p> <p><b>Marlene Mushitz, CRS, GRI, CDPE</b> 1301 1st St. NE New Prague 612-978-2222 www.DynamicMarlene.com</p>	<p><b>SAXE</b> Belle Plaine</p> <p><b>Matt Saxe Chevrolet Buick</b> 909 Enterprise Drive Belle Plaine, MN 56011 <b>952-873-2234</b> www.saxechevy.com</p>	
<p><b>Odenthal Landscaping</b> Retaining Walls, Patios &amp; Much More For All Your Landscaping Needs New Prague, MN www.odenthallandscaping.com Phone &amp; Fax: 907-364-5460 Cell: 612-703-4803</p>	<p><b>5% Commission Full Service Since 1988</b> Kubes Realty.com</p>	<p><b>NEW PRAGUE VETERINARY CLINIC</b> Dr. William F. Vollmar Dr. Katie Vollmar Boarding Services 1003 East Main St. New Prague, MN 952-758-2881</p>	<p><b>AMERICAN FAMILY INSURANCE</b> Melissa Kreuser, Agent Bus: (952) 758-5460 1301 1st St NE, New Prague</p>	<p><b>Wacker Drywall, Inc.</b> Hand Troweled Ceilings Roger Wacker Home: 952-758-8726 Cell: 612-978-9648 New Prague</p>
<p><b>DOUG VAYDA</b> Specialist in the practice of Orthodontics 101 Central Ave. New Prague 952-758-6999</p>	<p><b>MALA STRANA REHABILITATION CENTER</b> &amp; Assisted Living New Prague • 952-758-2511</p>	<p><b>Suel Printing Company</b> Pleased to be the printers of your Parish Bulletin. 200 Main St. East, New Prague 952-758-4435 awann@suelprinting.com</p>	<p><b>SKLUZACEK CONSTRUCTION, INC.</b> Steve Skluzacek, Owner #0004897 <b>952-758-4158</b></p>	<p><b>New Prague Dental Center</b> "Dental care for the entire family" Jeremy Derksen, D.D.S. Kathleen J. Garry, D.D.S. 101 Lexington Ave. So. <b>952-758-4741</b></p>
<p><b>Positively Impacting Peoples' Lives Since 1881</b></p> <p><b>Roundbank</b> New Prague: 952-758-BANK (2265) • Farmington: 651-463-8300 www.roundbank.com</p> <p>Member FDIC EQUAL HOUSING LENDER</p>	<p><b>Place Your Ad Here!</b> <b>952-758-4435</b></p>	<p>Quality appliances and service you can trust from your hometown appliance source</p> <p><b>40th Anniversary 1977-2017</b></p> <p><b>MAYTAG KitchenAid</b> (952) 445-2916 Or online at MyApplianceSource.com On Hwy 169 in Shakopee We may be smaller...but we try harder</p> <p><b>Whirlpool</b></p> <p><b>my APPLIANCE SOURCE</b> SALES • SERVICE</p>		
<p><b>For Sale Call 952-758-4435</b></p>	<p><b>Michael Traxler</b> WEALTH MANAGEMENT, LLC Investments &amp; Financial Planning Solutions</p> <p>Securities &amp; Advisory Services offered through Michael Traxler Wealth Management, LLC a Registered Investment Advisor in the State of Minnesota.</p> <p><b>Michael P. Traxler Financial Advisor</b> 222 Main Street East New Prague, MN 56071 <b>952-758-8060</b></p>			