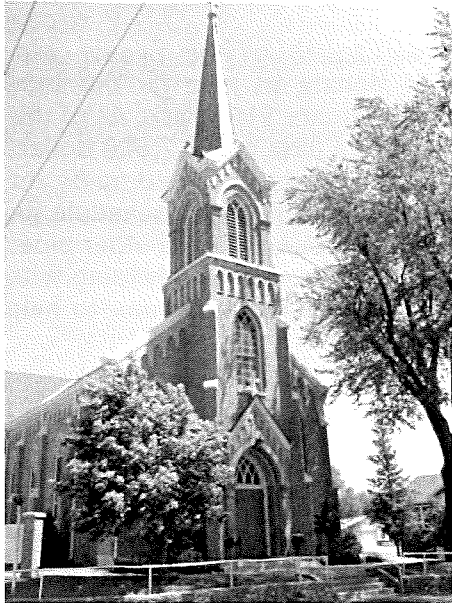


21ST SUNDAY IN ORDINARY TIME

AUGUST 25, 2019

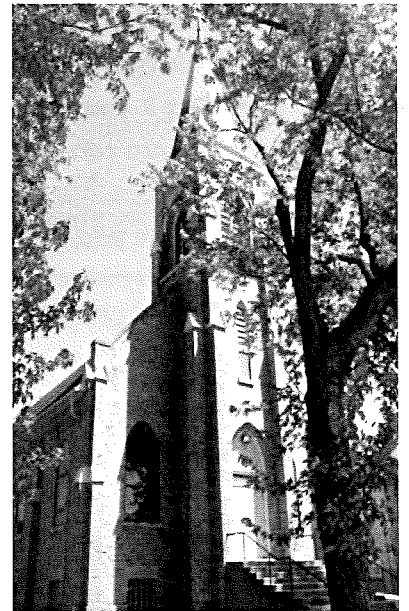
All are Invited!



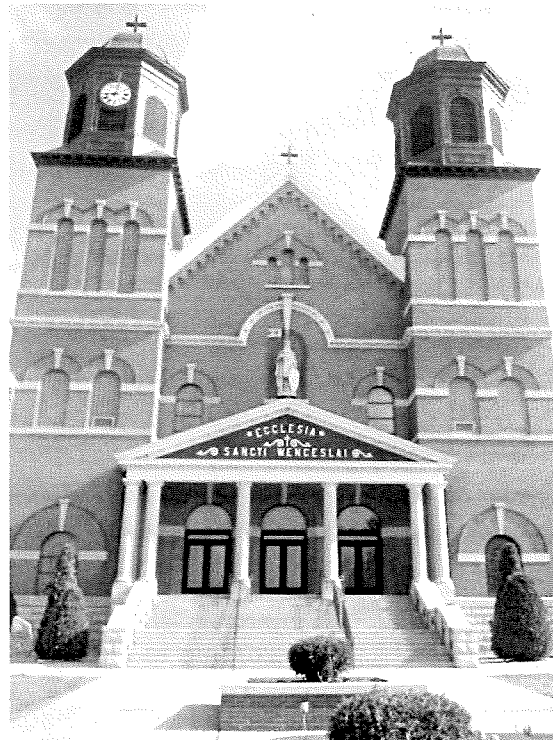
St. John the Evangelist

Parish Mission Statement

We are a Catholic community forming disciples of Jesus Christ dedicated to loving God through our worship, sharing the Good News, and loving service to others.



St. Scholastica



St. Wenceslaus

NEW PRAGUE AREA CATHOLIC COMMUNITY

Three Sites of Worship, One Community of Faith

**Including St. Wenceslaus &
The Western Catholic Community of St. John the Evangelist and St. Scholastica**

215 MAIN STREET EAST ■ NEW PRAGUE, MN 56071 ■ 952-758-3225 ■ NPCATHOLIC.ORG

We welcome you...

Welcome to the greater New Prague Area Catholic Community which includes the Church of St. Wenceslaus and the Western Catholic Community of St. John the Evangelist and St. Scholastica. We are happy you are here. Should you be visiting just for today, WELCOME! If you are seeking a church home, we would be honored to have you consider joining our faith community. If you are interested in a membership, please phone the parish office for assistance and registration. If you are over the age of 21, we ask that you register. Please feel free to stop by the parish office during office hours to register or you may do so online. Again, we are happy you are here.

At the Church of St. Wenceslaus**PARISH OFFICE HOURS**

Monday – Friday 8:30 am to 4:00 pm

MASS SCHEDULE**Weekend Masses**

Saturday..... 5:00 pm
 Sunday..... 8:30 & 10:30 am

Morning Word & Communion

Monday..... 8:00 am

Weekday Masses

Tuesday-Friday..... 8:00 am

SACRAMENTS & OTHER INFORMATION**Anointing of the Sick**

Available to those who are seriously ill or suffering from a prolonged illness. Call 952-758-3225

Confirmation

Preparation required. Call 952-758-0477

Reconciliation

Saturdays at 4 pm in the church.

Baptism

Preparation required. Call 952-758-3225

Marriage

Six months to one year preparation time required.
 Call 952-758-3225

Rosary

Monday – Friday 7:30 am & Saturday 8:00 am in the church.

Fatima Prayer Cell

Monday – Wednesday in the SW Daily Chapel
 after 8 am service.

Adoration

Friday 9:00 am to midnight in the SW Daily Chapel.

Early Morning Scripture Study

Wednesday 7:00 to 8:00 am in Pius X Room
 in church basement.

Prayer Chain

Judy: 952-758-2220 or Arnita: 952-758-4943

BeFrienders

Ann Schoenbauer: 952-758-3456 or
 Lois Giesen: 952-758-2138

From the Desk of Father Eugene Theisen

Padre's Pen –
"Thank You!" and
The Mass, Part III –
The Opening Chant

I begin by saying "Thank You" to all of the people who responded to my challenge to donate to help fix our pipe organ. I challenged 100 people to donate \$100 each. As of this writing I am counting 66 donors for a little over \$7,600 dollars in donations. The broken/bent pipe has been picked up by the organ repair company. When that is fixed we can schedule for its re-installation and the necessary repairs to keep other pipes from falling out of the case. Thank you again for helping with this unbudgeted item. I am still accepting donations to help defray the \$10,000 to \$15,000 cost for the total repair and tuning for the organ. I look forward to hearing its beautiful music in our church.

Speaking of beautiful music, I left off last week with a note that "In the United States, there are 4 options for the Opening Chant" in the Mass. We pick up on our journey through the Mass there.

In the interest of brevity I will summarize the first 3 options. They are all related to the antiphons and Psalms found in books known as the *Graduale Romanum* or *Graduale Simplex*. Basically all 3 of the first options are antiphons and Psalms. You will hear me at daily Mass simply reciting the opening antiphon right before making the sign of the cross "In the name of the Father and of the Son and of the Holy Spirit." Very few churches use these 3 options though there are new hymnals and missals in print that are including them so they can be a real option.

The fourth option for the opening chant states, "...another liturgical chant that is suited to the sacred action, the day, or the time of the year, similarly approved by the Conference of Bishops or the Diocesan Bishop. Here is where our music ministers are given the ability to plan and program our music according to the seasons using hymns, anthems, or chants.

If there is no music (accompanied or a capella) then the antiphon is to be recited. Thus, you see why at daily Mass I recite the antiphon. As a note, all of the faithful may join me in the recitation of the antiphon if they have it available to them (for example if they bring a copy of their Magnificat magazine with them) just like all are encouraged to join in the accompanied music at Mass.

Ad Christum per Mariam (To Christ through Mary),

Fr. Theisen

Parochial Administrator

New Prague Area Catholic Community

Western Catholic Community

If you're still interested...

NAWAS INTERNATIONAL TRAVEL

SPLENDORS OF EASTERN EUROPE

Including the Passion Play of Oberammergau

11 DAYS: JULY 16 - 26, 2020

Visiting

*Munich * Vienna * Budapest * Prague*

Hosted by

FR. EUGENE THEISEN

\$4499 FROM MINNEAPOLIS

(Air/land tour price is \$4049 plus \$450 government taxes/airline surcharges)



QUALITY TOURS SINCE 1949

We have confirmed that there are 13 more spots available for the tour to Eastern Europe including the Passion Play of Oberammergau. If you are interested, please call or visit the parish office for more information.

Mass Schedule Volunteers - St. John's & St. Scholastica

AUGUST 31 & SEPT. 1, 2019	Saturday St. Scholastica 8:15 PM	Sunday St. Scholastica 8:00 AM	Sunday St. John's 10:00 AM
Lector	Carol Weiers	Megan Odenthal	Amy Lemke
Eucharistic Ministers	MaryCarol Wolf	Ted Odenthal, Geraldine Odenthal & Millie Odenthal	Lori Wooten, Jill Holden & Jonila Weiers
Servers	Samantha Kubes & Leo Pexa	Lydia Schmitz & Julia Schoenecker	Daren, Owen & Sylvia Lemke, Teagan Lambrecht
Gift Bearer Family		Vern Pauly Family	Andy Tupy Family

Important Information

Weekend Masses

Saturday.....	8:15 pm	St. Scholastica
Sunday.....	8:00 am	St. Scholastica
Sunday.....	10:00 am	St. John's

SACRAMENTS & OTHER INFORMATION

Reconciliation

Saturday.....	7:15 pm	St. Scholastica
---------------	---------	-----------------

Baptism & Confirmation

Preparation required. Call the Parish Office at 952-758-3225.

Anointing of the Sick

Call the Parish Office at 952-758-3225.

Marriage

Prep required. Call Fr. Eugene Theisen.

Adoration

Fridays 9:00 am to midnight at St. Wenceslaus Daily Chapel

WESTERN CATHOLIC COMMUNITY OFFICE

20087 Hub Drive, New Prague 56071

952-758-4642

Rev. Eugene Theisen

Parochial Administrator

952-758-0469

Eugene.Theisen@npcatholic.org

Hall Rental:

Pamela Sherlock 952-758-0477 or email:

pamela.sherlock@npcatholic.org

Prayer Chain WCC:

Carol Bauer 952-457-4057

Noreen Giesen 952-758-2608

Marlene Dohmen 952-492-6879

COLLECTION INFORMATION

WESTERN CATHOLIC COMMUNITY

SUNDAY, AUGUST 18, 2019

Total Collected 8/18/19	\$2,876
Collections at Mass	\$1,861
Electronic Collections.....	\$1,015
Under Budget for the Week	-\$278
Actual Collections YTD.....	\$18,182
Under Budget YTD	-\$7,049
Budget for Next Week	\$3,154

Thank you for your support!

Bulletin E-mail: info@npcatholic.org

Website: <http://www.npcatholic.org>

PARISH AND AREA NEWS

Suicide Grief Support Group Meeting

Family, friends, and anyone who has lost a loved one to suicide are invited to attend the monthly meeting of the Suicide Grief Support Group. The meeting will be held on Tues., Aug. 27th from 7-8:30 pm at the Mayo Clinic Health System, Jameen Mape Conference Center. No fee or pre-registration is required. Please call Tom Handrich at (952) 445-0107 for additional information.



Fall Pillow Cleaning!

Carlson's Pillow Cleaning Service will be in the foyer of the PAC at St. Wenceslaus Sat., Sept. 7th, 7 am-1 pm. Early drop-off Fri., Sept. 6th from 4-8 pm. New custom made pillows and comforters also for sale. Proceeds will go to Our Lady of Good Help Council of Catholic Women. Contact Pamela at 758-0477 for more information.

Make plans for a fall get-away with the one you love before your calendar fills up!

A Marriage Encounter Weekend is a private weekend away from life's distractions that allows a husband and wife to focus on each other. The next available weekends are Oct. 4-6 in Buffalo, MN, and Nov. 22-24 in Prior Lake, MN. Early registration is highly recommended. For more information visit our website at: twincitieswwme.org or contact Brent & Tracy at applications@twincitieswwme.org or (612) 756-8720.



The Parkinsons Support Group

is meeting at Praha Village at 1 pm, Tues., Aug. 27th.



God Bless the Newly Baptized

Welcome and congratulations to *Ryker John Janda*, son of Corey & Kelly Janda. We rejoice with your family on this joyful occasion!

WEEKEND HELP IS NEEDED

We are in need of a weekend custodian to make sure the church is ready for weekend activities and Masses. If interested, contact Peter Guzulaitis at (952) 758-3225 or peter.guzulaitis@npcatholic.org.

~ COLLECTION INFORMATION ~

St. Wenceslaus Site
SUNDAY, AUGUST 18, 2019

Total for 8/18/19	\$22,252
Collections at Mass.....	\$10,932
Electronic Collections.....	\$11,320
Over Challenge for Week.....	+\$8,315
Actual Collections YTD.....	\$99,485
Over Challenge YTD.....	+\$1,924
Challenge for Next Week.....	\$13,937

Prayer Shawl Retreat ~ Sept. 6-8

The Prayer Shawl Retreat is the time you can use your gift of knitting, crocheting, or weaving to meet other Christian's needs of healing, security, and hope. Work together and share ideas and stories while experiencing our theme for 2019; *Rejoice and be Glad, Our Call to Holiness Today*.

Please bring any patterns, prayer rituals, or other materials related to your ministry to share with the Prayer Shawl Group.

Keep right on knitting or crocheting while experiencing our four conference talks that help you explore how holiness is not just for people on stain glass windows with halos around their heads! Also an opportunity to meet one on one with a Spiritual Director, review your priorities, or just enjoy the retreat center's flowers and trails during this prime time of year. As you create prayer shawls restore your energy for, and outlook on, life. Please call to register ~ (952) 447-2182 or register online at www.franciscanretreats.net. Franciscan Retreats and Spirituality Center ~ 16385 St. Francis Lane, Prior Lake

Our Lady of the Prairie Fall Festival/Block Party

Where: Our Lady of the Prairie Church, Belle Plaine

When: Sept. 7th, 2-11 pm; Festival Mass at 4:15 pm

Chicken Dinner will be served from 5-7 pm.

Adults ~ \$12, Children 3-12 \$6, Under 3 Free.

Takeout orders available ~ \$12.

Silent Auction, Kids Games, Food Stands, Blest Art,

Pet Show, Bingo, Beer Garden, and Live Bands.

Come join the fun!

St. Canice Fall Festival

St. Canice Church of Kilkenney will host its Fall Festival Sun., Sept. 8th. The day begins with Mass at 10 am. A dinner of chicken, ham, and all the trimmings will be served cafeteria style from 11 am-2 pm in our parish hall. Adults \$12, Children 5-12 yrs \$5, Pre-School free, Takeouts \$12. Activities from 11 am-3 pm. Live Music, Country Store, Jar Bar, Crafts, Refreshments, Games for All Ages...ending with a Raffle. Come early! Enjoy the day!

Women's Mid-Week Retreat

Early Fall is a lovely time to relax in the supportive calm of a retreat center and hear the Lord's voice in your life. These Women's Mid-week retreats have a pace all their own. We hope you consider experiencing that pace for yourself at one of these two events.

Women's Mid-week Retreat

Tues. ~ Thurs., **Sept. 10-12 or Oct. 1-3.**

Theme for both retreats; *Rejoice and be Glad; Our Call to Holiness Today*. Four conference talks help you explore how holiness is not just for people on stain glass

SUPPORT OUR PATRONS

who make this bulletin possible by their advertising.

WORNSON GOGGINS

windows with halos around their heads! Holiness is still viable in our lives today. Also there are opportunities for unhurried confession, meeting one on one with a Spiritual Director, reviewing your priorities, or just enjoying the retreat center's flowers and trails during this prime time of year. There's plenty of open time too to restore your energy for, and outlook on, life. Please call to register ~ (952) 447-2182 or register online at www.franciscanretreats.net. Franciscan Retreats and Spirituality Center ~ 16385 St. Francis Lane, Prior Lake

"Healing Takes Time" Retreat

Sept. 13th-15th, 2019

We would like to invite you to the fall retreat, **Healing Takes Time**, sponsored by Hope United Grief Group. This retreat will focus on 5 different types of grief ~ Loss of Spouse; Loss of Child; Loss through Suicide; Pregnancy & Infant Loss, and Loss of Sibling/Parent. We will have main speakers with breakout sessions that will be facilitated by those who have experienced similar losses. The retreat will be held Friday evening 7 pm through Sunday morning 11 am at The Franciscan Retreat and Spirituality Center in Prior Lake, Minnesota. This interdenominational retreat is meant to be a **Gift from God** to remind the grieving that there **IS** hope after the loss of a loved one, no matter where they may be on their journey of grief. There are confidential partial scholarships available. For more information or to register for the retreat, please contact Marlene Hunt at (507) 381-1177 or (507) 931-2320 or email marlenehunt53@gmail.com
Facebook: Hope United Grief Group



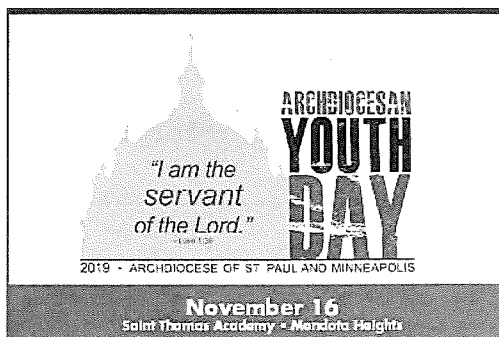
FAITH FORMATION AND YOUTH MINISTRY

Confirmation & Youth Alive Registration

Calling all rising 9th graders, returning 10th graders, and 11th/12th grade Youth Alive students, you can register for confirmation and Youth Alive online on the parish website. Here is the link:
<https://npcatholic.org/registration-and-forms>

Important Meeting for 8th Grade Confirmation:

This required Parent/Teen Confirmation Meeting is Wed., Sept. 11th, 6-7:30 pm for all 8th grade students, Faith Formation Families, and St. Wenceslaus School Families. Contact Pamela at pamela.sherlock@npcatholic.org for more information.



Calling all High School Teens!

Archdiocesan Youth Day is Nov. 16th!

Contact Pamela or Emily in the Faith Formation Office for more information! Chaperones are NEEDED!

Are you or someone you know off to college/university this fall?

Stay connected with your faith at one of many Newman Centers around the U.S. What are Newman Centers? Newman Centers are Catholic ministries at non-Catholic universities throughout the world. Newman Centers were named in honor of Blessed Cardinal John Henry Newman! Check it out!



SCHOOL NEWS from SWS

Important School Start Information

Please note that the first day of school for **grades 6-8** is on Mon., Aug. 26th.

The first day of school for **K-5** is on Wed., Aug. 28th. Teachers plan to have conferences/testing sessions ~ 30 minutes for each child. Watch for the "sign up" link to come to you soon.

The first day of **prekindergarten** is on Fri., Aug. 30th. There will be a parent/child session on Wed., Aug. 28th ~ 9-10:30 am.

The first day of school for **preschool 3/4's kids** is on Tues., Sept. 3rd. A parent/child session will take place on Thurs., Aug. 29th ~ 9-10:30 am.

WESTERN CATHOLIC COMMUNITY St. John's & St. Scholastica

Our Lady of Good Help Council of Catholic Women

will be meeting Mon., Aug. 26th at St. John's Koenig Hall. Rosary at 6:30 pm with lunch to follow. Come meet Pamela Sherlock, our Site Coordinator for St. John's and St. Scholastica churches. She will explain her role within the 3 churches. All women are encouraged to attend this informational meeting. Please bring shampoo/hygiene items to meeting for Peace Center. Lunch committee is Lois Solheid, Ann Prochaska, Dee Pomije, Janette Becker, Mari Estabrooks.

Fall Pillow Cleaning Sept. 6-7!

See details on Page 4. Proceeds will go to Our Lady of Good Help Council of Catholic Women. Contact Pamela at 758-0477 for more information.

Save the Date

Patriotic Rosary, Sun., Sept. 8th, at St. John's Catholic Church for the conversion of our nation. Father Eugene Theisen will be presiding. Everyone is welcomed.

Save the Date:

Women's Retreat at St. John's, Union Hill.

Sat., Nov. 2nd. More information soon. Contact Pamela at pamela.sherlock@npcatholic.org.

NEW PRAGUE AREA CATHOLIC COMMUNITY

Three Sites of Worship ~ One Community of Faith

Help us update our records!

*Have you moved recently?
Changed your phone number?
Changed to a cell phone?
Have an email address?
Changed your email address?*

*Stay connected to all the activities at St. Wenceslaus and
the Western Catholic Community of St. John's & St. Scholastica
by making sure our records are current.*

*Sharing your email address will keep you connected with
parish updates and current happenings.*

Name (Adult 1): _____

Cell Phone #: _____

Email Address: _____

Name (Adult 2): _____

Cell Phone #: _____

Email Address: _____

Family Address: _____

City, State Zip: _____

Home Phone #: _____

*Please return in the Sunday Collection, mail to the parish office at 215 Main St. E., New Prague, MN 56071,
or email your updated parish membership information to info@npcatholic.org.*

LITURGIES & PRIEST'S MASS INTENTIONS

INCLUDES ALL CHURCH LOCATIONS
WEEK OF AUGUST 26-SEPTEMBER 1, 2019

Rosary at St. Wenceslaus
MONDAY – FRIDAY at 7:30 am
SATURDAY at 8:00 am

Monday, August 26

8:00 am Word & Communion – SW

Tuesday, August 27

8:00 am Mass – SW

Wednesday, August 28

8:00 am Ed & Lavina Pintz – Mass – SW

Thursday, August 29

8:00 am Bob Koppinger – Mass – SW

Friday, August 30

8:00 am Global Unbound – Mass – SW

Saturday, August 31

4:00 pm Confession – SW

5:00 pm Jan Retka – Mass – SW

7:15 pm Confession – SS

8:15 pm Mass for the People – Mass – SS

Sunday, September 1

8:00 am Ronald Kaufenberg – Mass – SS

8:30 am Living & Deceased Members of FCCLA,

..... Dorothy Skluzacek – Mass – SW

10:00 am Jerry & Isabel Widmer –

..... Sheila Widmer Vikla – Mass – SJ

10:30 am Merlin Moore –

..... John Siemon – Mass – SW

11:45 am Baptism – SW

STAFF DIRECTORY NEW PRAGUE AREA CATHOLIC COMMUNITY**Rev. Eugene Theisen**

Pastoral Administrator
952-758-0469
Eugene.Theisen@npcatholic.org

Peter Guzulaitis

Parish Business Administrator
952-758-0465
Peter.Guzulaitis@npcatholic.org

Ruth Weinandt

Parish Accountant &
Pastoral Ministry Associate
952-758-0466
Ruth.Weinandt@npcatholic.org

Laura Schoenecker

Faith Formation Director
Pre-K through Adult
952-758-5131
Laura.Schoenecker@npcatholic.org

Pamela Sherlock

Youth Ministry 6-8,
Confirmation Coordinator &
WCC Site Coordinator
952-758-0477
Pamela.Sherlock@npcatholic.org

Emily Shimota

Youth Ministry
952-758-0486
Emily.Shimota@npcatholic.org

Mary Higgins

Adult Faith Formation Associate
952-758-0464
Mary.Higgins@npcatholic.org

Kim Doyle

St. Wenceslaus School Principal
952-758-3133
Kim.Doyle@swsaints.org

Sarah Gullickson

Preschool Director
952-758-0480
Sarah.Gullickson@swsaints.org

Debbie Gregor

Director of Liturgical Music at SW
952-758-4207
Debbie.Gregor@npcatholic.org

Lisa Levenson

Parish Administrative Assistant
952-758-3225
Lisa.Leverson@npcatholic.org

PARISH BUSINESS OFFICE

215 Main St E, New Prague, MN 56071
PH 952-758-3225 FAX 952-758-2960

FAITH FORMATION OFFICE

On campus in Parish Activity Center

ST. WENCESLAUS SCHOOL

227 Main St E, New Prague, MN 56071
PH 952-758-3133 FAX 952-758-2958

LITTLE SPIRITS PRESCHOOL

On campus of SWS ~ 1950's building
952-758-0480

MAINTENANCE DEPARTMENT

952-758-2327

MEETINGS & EVENTS CALENDAR

WEEK OF AUGUST 26-SEPTEMBER 1, 2019

Monday, August 26:

First Day of School Grades 6-8
Our Lady of Good Help CCW Meeting, 6:30 pm
– St. John's, Union Hill, Koenig Hall
Read the Bible in One Year, 6:30-8 pm
– Faith Formation Office

Tuesday, August 27:

No Events

Wednesday, August 28:

Early Morning Scripture Study, 7-8 am
– Pius X Room, Church Basement
First Day of School Grades K-5

Thursday, August 29:

No Events

Friday, August 30:

First Day of School PreK
Adoration, 9 am-midnight – SW Daily Chapel

Saturday, August 31:

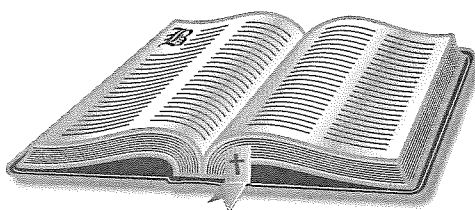
Mom's Book Club, 8-9:30 am
– Faith Formation Office

Sunday, September 1:

No Events

SCRIPTURE READINGS

WEEK OF AUGUST 26-SEPTEMBER 1, 2019

**Monday, August 26:**

1 THES 1:1-5, 8B-10 / MT 23:13-22

Tuesday, August 27:

1 THES 2:1-8 / MT 23:23-26

Wednesday, August 28:

1 THES 2:9-13 / MT 23:27-32

Thursday, August 29:

1 THES 3:7-13 / MK 6:17-29

Friday, August 30:

1 THES 4:1-8 / MT 25:1-13

Saturday, August 31:

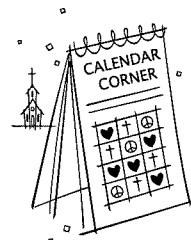
1 THES 4:9-11 / MT 25:14-30

Sunday, September 1:

SIR 3:17-18, 20, 28-29 / HEB 12:18-19,
22-24A / LK 14:1, 7-14

**CHURCH OF ST. WENCESLAUS
CALENDAR CORNER**

Thank you to the Following Sponsors:
Lau's Czech Bakery and Coffee Shop,
David G. Barta Construction LLC
& New Prague Mini Storage, Inc

**Date:**

August 21, 2019

Winner:

Nancy &
Roger Musil



<p>Patty's Place</p> <ul style="list-style-type: none"> • Specialty Coffees • Fresh Pastries • Hand Dipped Ice Cream • Cake Decorating <p>108 E Main Street #1 New Prague 952-758-5808 Open 7 Days A Week</p>	<p>NPCL (New Prague-Coska-Louisville) Mutual Insurance Company</p> <p>205 10th Ave. NE New Prague, MN 56071</p> <p>952-758-5964 www.npclinsurance.com</p> <p>Competitive Rates for Farm & Home Since 1882</p>	<p>SKLUZACEK Cabinetry & Woodworking</p> <p>Dave Skluzacek • 612-986-8443 New Prague, MN</p>	<p>First Bank & Trust</p> <p>1101 1st Street SE, New Prague • 952-758-4491 BANkeasy.com</p> <p>MEMBER FDIC</p>
<p>Bruzek FUNERAL HOME Serving With Compassion Since 1903 Steve and Mary Frost Cremation & Funeral Planning 952-758-4949</p>	<p>Jon P. Colling, D.D.S. Ruth Peterka, D.D.S. GENERAL DENTISTRY Thomas W. Smyth, D.D.S. newpraguedentist.com</p> <p>OFFICE HOURS MON-FRI 211 10th Ave. NE New Prague 952-758-2376</p>	<p>Edina Realty.</p> <p>Pat Sullivan REALTOR 952.457.0479 patsullivan@edinarealty.com www.edinarealty.com/pat-sullivan-realtor</p>	<p>MARQUARDT JEWELERS</p> <p>New Prague</p>
<p>Parkview Medical Clinic</p> <p>Daniel R. Berg, MD Michael P. O'Rourke, MD Jean Craig, MD Heather Hamernick, MD New Patients Welcome Same Day Appointments Available Saturday Morning Appointments www.parkviewclinic.com 952-758-2535</p>	<p>NEW PRAGUE AUTO REPAIR www.NewPragueAutoRepair.com</p> <p>Since 1974 Gary Kohoutek, Owner 952.758.4471 205 4th Ave. SW New Prague, MN 56071</p>	<p>KUBES Furniture & Flooring 133 Main Street West New Prague, MN 56071</p> <p>952-758-4588 www.kubeshomefurnitureflooring.com Mon-Wed. 9-5, Thur. 9-7, Fri. 9-5, Sat. 9-3</p>	<p>This Space Available Call 952-758-4435</p>
<p>Ambroz Plumbing, Inc. Paul Ambroz</p> <p>New Construction - Remodel - Service 952-758-6265 • Cell 952-292-4413 Lic# 059407-PM</p>	<p>TUPY INSURANCE AGENCY, INC.</p> <p>For Your Personal or Business Insurance Needs We are here to Serve You!</p> <p>111 East Main Street New Prague, MN 952-758-2433</p>	<p>South Suburban Oral Surgeons</p> <p>Dr. Mark T. Roszkowski Dr. Richard T. Pihlstrom 115 1st Avenue SE, #110, New Prague, MN 952-758-2321</p>	<p>STEFENI TUPY REALTOR 952-486-3082 www.StefiTupy.com</p> <p>Edina Realty. A National Franchise Office StefiTupy@EdinaRealty.com</p>
<p>MACH LUMBER Paul Kratochvil, Owner Convenient - We Deliver! 952-758-3235 M-F 7-5; Sat. 8-Noon</p> <p>201 Second Ave. SW, New Prague 1 block S of Main St, across from ConAgra</p>	<p>YOU CALL... WE HAUL...</p> <p>Complete Household Transfer Licensed • Bonded Reasonable Rates</p> <p>TIM or JOHN 952-758-2552 16264 310 St. New Prague</p>	<p>Marlene Mushitz, CRS, GRI, CDPE 1301 1st St. NE New Prague 612-978-2222</p> <p>www.DynamicMarlene.com</p>	<p>SAXE Belle Plaine</p> <p>Matt Saxe Chevrolet Buick</p> <p>909 Enterprise Drive Belle Plaine, MN 56011 952-873-2234 www.saxechevy.com</p>
<p>Odenthal Landscaping Retaining Walls, Patios & Much More For All Your Landscaping Needs</p> <p>New Prague, MN www.odenthallandscaping.com Phone & Fax: 507-364-5460 Cell: 612-703-4803</p>	<p>5% Commission Full Service Since 1988 Kubes Realty.com</p>	<p>NEW PRAGUE VETERINARY CLINIC Dr. William F. Vollmar Dr. Katie Vollmar Boarding Services 1003 East Main St. New Prague, MN 952-758-2881</p>	<p>AMERICAN FAMILY INSURANCE</p> <p>Melissa Kreuser, Agent Bus: (952) 758-5460 1301 1st St NE, New Prague</p>
<p>DOUG VAYDA Specialist in the practice of Orthodontics 101 Central Ave. New Prague 952-758-6999</p>	<p>MALA STRANA REHABILITATION CENTER & Assisted Living New Prague • 952-758-2511</p>	<p>Suel Printing Company Pleased to be the printers of your Parish Bulletin. 200 Main St. East, New Prague 952-758-4435 awann@suelprinting.com</p>	<p>SKLUZACEK CONSTRUCTION, INC.</p> <p>Steve Skluzacek, Owner #0004897 952-758-4158</p>
<p>Roundbank</p> <p>New Prague: 952-758-BANK (2265) • Farmington: 851-463-8300 www.roundbank.com</p> <p>Member FDIC EQUAL HOUSING LENDER</p>	<p>Quality appliances and service you can trust from your hometown appliance source</p> <p>40th Anniversary 1977-2017</p> <p>MAYTAG KitchenAid® (952) 445-2916 Or online at MyApplianceSource.com On Hwy 169 in Shakopee We may be smaller...but we try harder</p> <p>Whirlpool my APPLIANCE SOURCE SALES • SERVICE</p>	<p>New Prague Dental Center "Dental care for the entire family" Jeremy Derksen, D.D.S. Kathleen J. Garry, D.D.S. 101 Lexington Ave. So. 952-758-4741</p>	
<p>952.758.2879 Ron Schoenecker Your Local Agent 105 Main St W New Prague, MN 56071 rschoenecker@farmersagent.com</p> <p>FARMERS INSURANCE</p>	<p>Michael Traxler WEALTH MANAGEMENT, LLC Investments & Financial Planning Solutions</p> <p>Securities & Advisory Services offered through Michael Traxler Wealth Management, LLC A Registered Investment Advisor in the State of Minnesota.</p>	<p>Michael P. Traxler Financial Advisor 222 Main Street East New Prague, MN 56071 952-758-8060</p>	