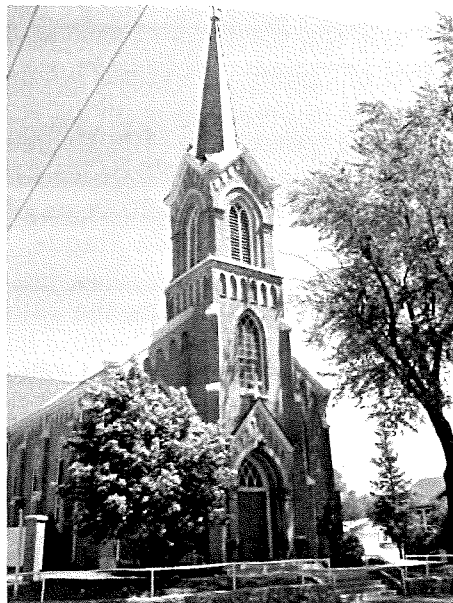


25TH SUNDAY IN ORDINARY TIME

SEPTEMBER 22, 2019

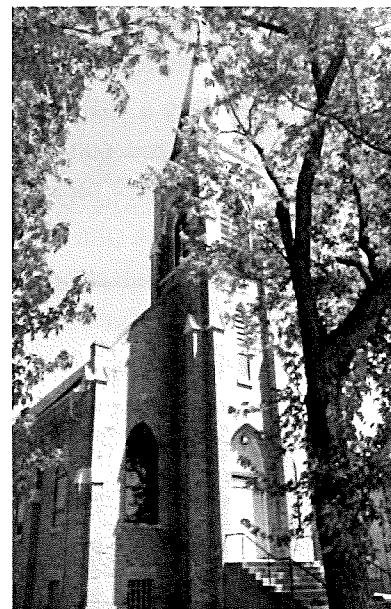
Put Out Into the Deep



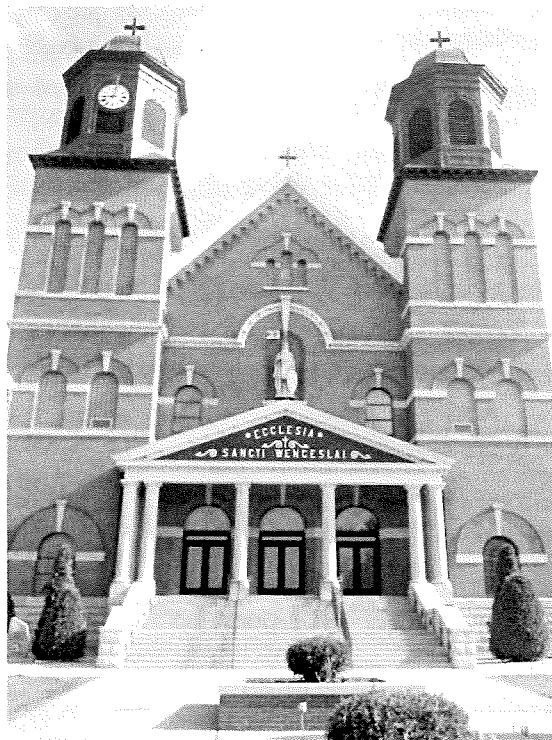
St. John the Evangelist

Parish Mission Statement

We are a Catholic community forming disciples of Jesus Christ dedicated to loving God through our worship, sharing the Good News, and loving service to others.



St. Scholastica



St. Wenceslaus

NEW PRAGUE AREA CATHOLIC COMMUNITY *Three Sites of Worship, One Community of Faith*

**Including St. Wenceslaus &
The Western Catholic Community of St. John the Evangelist and St. Scholastica**

215 MAIN STREET EAST ■ NEW PRAGUE, MN 56071 ■ 952-758-3225 ■ NPCATHOLIC.ORG

We welcome you...

Welcome to the greater New Prague Area Catholic Community which includes the Church of St. Wenceslaus and the Western Catholic Community of St. John the Evangelist and St. Scholastica. We are happy you are here. Should you be visiting just for today, WELCOME! If you are seeking a church home, we would be honored to have you consider joining our faith community. If you are interested in a membership, please phone the parish office for assistance and registration. If you are over the age of 21, we ask that you register. Please feel free to stop by the parish office during office hours to register or you may do so online. Again, we are happy you are here.

At the Church of St. Wenceslaus**PARISH OFFICE HOURS**

Monday – Friday 8:30 am to 4:00 pm

MASS SCHEDULE**Weekend Masses**

Saturday..... 5:00 pm
Sunday..... 8:30 & 10:30 am

Morning Word & Communion

Monday..... 8:00 am

Weekday Masses

Tuesday-Friday..... 8:00 am

SACRAMENTS & OTHER INFORMATION**Anointing of the Sick**

Available to those who are seriously ill or suffering from a prolonged illness. Call 952-758-3225

Confirmation

Preparation required. Call 952-758-0477

Reconciliation

Saturdays at 4 pm in the church.

Baptism

Preparation required. Call 952-758-3225

Marriage

Six months to one year preparation time required.
Call 952-758-3225

Rosary

Monday – Friday 7:30 am & Saturday 8:00 am in the church.

Fatima Prayer Cell

Monday – Wednesday in the SW Daily Chapel
after 8 am service.

Adoration

Friday 9:00 am to midnight in the SW Daily Chapel.

Early Morning Scripture Study

Wednesday 7:00 to 8:00 am in Pius X Room
in church basement.

Prayer Chain

Judy: 952-758-2220 or Arnita: 952-758-4943

BeFrienders

Ann Schoenbauer: 952-758-3456 or
Lois Giesen: 952-758-2138

From the Desk of Father Eugene Theisen**Padre's Pen –
Bishops, Feasts, Fatima,
and the Organ**

What a great blessing to have our Archbishop here last weekend to celebrate our 10:30 Mass with the Knights of Columbus and our whole parish gathered! The Knights served in most of the ministries and provided us with an all-male choir. The 4th Degree provided regular Honor Guard and a special Honor Guard for the Archbishop. It was a great way to celebrate 100 years of our Knights of Columbus Council #2023 here in New Prague.

We do have a big feast day coming up. Next Saturday, the 28th of September, is our Titular Feast of St. Wenceslaus. Because he is the patron for whom our church is named, this is a Solemnity for our parish. To celebrate this, we will have an 8:00 am Mass on Saturday morning before the start of the Marathon. It is a time to give thanks for the many blessings God has bestowed on us in the past year through the Communion of Saints and to ask for continued help and blessings for another year. It is also our big Marathon Day for St. Wenceslaus School. I will be joining in the Marathon this year. Thank you for all those who have pledged me. I will be praying my rosary while I run for those who pledged me and for all our school benefactors.

As a note... since the Marathon will be right after Mass, those taking part in the Marathon may wear their walking/running gear to the Mass. Please use good sense for modesty and appropriateness during Mass.

We continue to plan for the 24 hours of prayer and reparation on the First Friday and First Saturday of October with the International Pilgrimage Statue of our Blessed Mother. I don't have the complete schedule as of this writing. We will post it and print it once I have completed it. Thank you to all who have signed up for the Holy Hours during the day and throughout the night. Just because a time slot is full on the sign up does not mean you cannot come at that time. WE WANT TO STORM HEAVEN WITH OUR PRAYERS☺

Last, thank you to all those who have donated to repair our beautiful organ. We just went over \$14,000 today. The estimate was for \$10 to \$15 thousand dollars. If the repairs come in on the low end. I plan to put excess funds toward an Organ Rededication event and future tuning and maintenance.

Ad Christum per Mariam (To Christ through Mary),

Fr. Eugene Theisen

Parochial Administrator

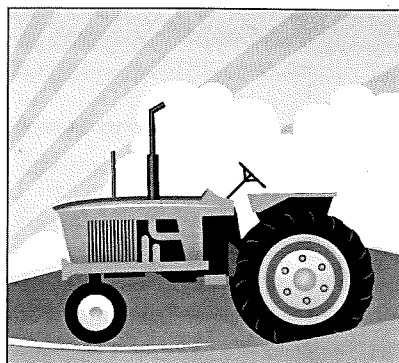
New Prague Area Catholic Community

Western Catholic Community

St. John's & St. Scholastica

Tractor Blessings

are happening this weekend
Get your tractor blessed at
these times and locations:
AFTER 8:00 am Mass on
Sunday at St. Scholastica
AFTER 10:00 am Mass on
Sunday at St. John's



God Bless the Newly Baptized

Welcome and congratulations to *Crew Mac Nytes*, son of Ted & Paige Nytes. We rejoice with your family on this joyful occasion!

International Traveling Fatima Statue

Please see Fr. Eugene's column on Page 2 of this bulletin. For more information about signing up for Adoration during the visit by the international traveling Fatima statue Oct. 4-5, please contact the parish office, (952) 758-3225.

Save the Date:

Women's Retreat at St. John's, Union Hill.
Sat., Nov. 2nd. More information soon.
Contact Pamela at pamela.sherlock@npcatholic.org.

Mass Schedule Volunteers - St. John's & St. Scholastica

September 28 & 29, 2019	Saturday St. Scholastica 8:15 PM	Sunday St. Scholastica 8:00 AM	Sunday St. John's 10:00 AM
Lector	Carol Weiers	Jim Walker	Danielle Solheid
Eucharistic Ministers	Sandy Kubes	Cindy Jirak, Marlene Dohmen & Judy Pauly	Jill Holden, Jonila Weiers & Lori Wooten
Servers	Samantha & Julia Kubes	Steven & Megan Odenthal	Daren, Owen & Sylvia Lemke, Teagan Lambrecht
Gift Bearer Family		Pete Schoenecker Family	Don Skluzacek Family

Important Information

Weekend Masses

Saturday	8:15 pm	St. Scholastica
Sunday	8:00 am	St. Scholastica
Sunday	10:00 am	St. John's

SACRAMENTS & OTHER INFORMATION

Reconciliation

Saturday 7:15 pm St. Scholastica

Baptism & Confirmation

Preparation required. Call the Parish Office at 952-758-3225.

Anointing of the Sick

Call the Parish Office at 952-758-3225.

Marriage

Prep required. Call Fr. Eugene Theisen.

Adoration

Fridays 9:00 am to midnight at St. Wenceslaus Daily Chapel

WESTERN CATHOLIC COMMUNITY OFFICE

20087 Hub Drive, New Prague 56071
952-758-4642

Rev. Eugene Theisen

Parochial Administrator

952-758-0469
Eugene.Theisen@npcatholic.org

Hall Rental:

Pamela Sherlock 952-758-0477 or email:
pamela.sherlock@npcatholic.org

Prayer Chain WCC:

Carol Bauer	952-457-4057
Noreen Giesen	952-758-2608
Marlene Dohmen	952-492-6879

COLLECTION INFORMATION

WESTERN CATHOLIC COMMUNITY SUNDAY, SEPTEMBER 15, 2019

Total Collected 9/15/19	\$3,162
Collections at Mass	\$2,147
Electronic Collections.....	\$1,015
Over Budget for the Week	+\$8
Actual Collections YTD.....	\$27,499
Under Budget YTD	-\$7,194
Budget for Next Week	\$3,154

Thank you for your support!

Bulletin E-mail: info@npcatholic.org

Website: <http://www.npcatholic.org>

PARISH AND AREA NEWS

Introducing Emily Shimota ~

I am thrilled to be your new Youth Minister! Thank you for your warm welcome, and please know that I look forward to working with all the families and youth in this incredible community. I grew up on a farm outside of New Prague and attended Holy Cross Catholic School. After 8th grade graduation, I attended NPHS and then went on to St. Olaf College. I graduated in 2017. As a St. Olaf student, I was very involved in leading the Catholic communities on campus, serving as the co-president of the Catholic Student Association and as the lead student missionary for St. Paul's Outreach. This ministry work gave me such joy; it really deepened my faith and gave me the gift of lifelong faith-filled friendships. I am excited to bring that passion and those gifts to the ministry here at the New Prague Area Catholic Community. Please know that I would love to hear from you anytime. You can reach me by email: Emily.Shimota@npcatholic.org or by phone: (952) 758-0486.

~ Emily Shimota, Youth Minister

For Grandparents

The Monday morning 6-part series for grandparents begins this Mon., September 23rd, from 9:30-11 am at the home of Mary Lynn Gross, 505 Lyndale Ave. N. There is still time to register for the Tuesday evening series, which begins on Tues., Oct. 1st from 6:30-8 pm. This series will be held in the Parish Activities Center and will be led by Judy Deutsch. The cost for materials is \$7 per person or \$10 per couple. To register, contact Mary Higgins at Mary.Higgins@npcatholic.org or (952) 758-0464. Invite a friend to join you!

New Prague Knights of Columbus Auxiliary

will have their monthly meeting on Mon., Sept. 23rd, at 6 pm at the KC Hall. A potluck dinner will be served with a blessing of the officers and conversation after. Spouses are also invited. Come check us out! All Catholic women are invited to join.

The Parkinson Support Group

will have their monthly meeting on Tues., Sept. 24th, at 1 pm at Praha Village in New Prague. Caregivers and family members are invited to attend. Our speaker will be Tami Pint, Occupational Therapist from Mayo Hospital. For more information, please call Rosella at (952) 758-3578 or Betty at (952) 758-3924.

Suicide Grief Support Group Meeting

Family, friends, and anyone who has lost a loved one to suicide are invited to attend the monthly meeting of the Suicide Grief Support Group. The meeting will be held on Tues., Sept. 24th from 7-8:30 pm at the Mayo Clinic Health System in New Prague, Jameen Mape Conference Center. Please enter through the Emergency Room doors (southwest entrance). No fee or pre-registration is required. Please call Tom Handrich at (952) 445-0107 for additional information.

Jesus Approaches: Women's Bible Study

Women of the parish, you are invited to join us on an 8-week journey with Jesus. We will be reading "Jesus Approaches" by Elizabeth Kelly and learning about the beautiful gift and responsibility of being women living the Gospel. Elizabeth will walk us through 8 stories of women in the Gospel and their personal encounter and journey with Jesus. Our study will meet on Tuesday evenings, beginning Sept. 24th-Nov. 12th, 7-8:30 pm in the Parish Activities Center. If you would like to join the study, please contact Amber Dudley at dudley946@gmail.com. To order your materials, go to www.lizk.org. The cost of the study is \$49+shipping & tax. It includes your book, supplemental materials, and access to the recordings of Liz's lectures. If the cost of the study is a burden, please contact Laura Schoenecker, (952) 758-5131 or Laura.Schoenecker@npcatholic.org. We want to make this available to all interested in joining us.

Are you homebound and can't make it to Mass?

Bevcomm will air Masses from past weekends on Channel 6 Sundays at 8:30 am and 11:30 am and Wednesday at 4:00 pm for those who are homebound.

Care for Creation

Who is my neighbor in a climate changing world?

How can we learn and respond to the Church's teaching on caring for creation and the poor?

Thurs., Oct. 3rd, 6:30-8 pm, Faith Formation office.

PEACE CENTER HARVEST CAMPAIGN

For many food shelves and those who use their services regularly, finding fresh produce can be a challenge. Please think of Peace Center during the rest of the gardening season and collect fresh produce from your garden for those who need it most. Peace Center is open Mondays, Wednesdays, and Fridays from 9 am-12:30 pm and Thursdays from 4:30-6:30 pm to accept your produce donation. Monetary donations can also be dropped off or mailed to Peace Center, 313 Columbus Ave. N, New Prague.

International Traveling Fatima Statue

Please see Fr. Eugene's column on Page 2 of this bulletin. For more information about signing up for Adoration during the visit by the international traveling Fatima statue Oct. 4-5, please contact the parish office, (952) 758-3225.

Knights of Columbus French Toast Breakfast

Where: Knights of Columbus Hall ~ New Prague

When: Sun., Oct. 6th, Serving from 7:30 am-12 pm

Menu includes French Toast, Scrambled Eggs, Sausage, Coffee, Milk, and Juice. Free will offering accepted with a portion of the profits going to the KC "Adopt a Seminararian" program.

SUPPORT OUR PATRONS

who make this bulletin possible by their advertising.

EDINA REALTY - PAT SULLIVAN, REALTOR

Worldwide Marriage Encounter Weekends

IS THE HONEYMOON OVER? It doesn't have to be! A Marriage Encounter weekend can rekindle the excitement and romance in your relationship. This is a private weekend away from life's distractions that allows a husband and wife to focus on each other. The next Worldwide Marriage Encounter Weekends are Oct. 4-6 in Buffalo, MN, and Nov. 22-24 in Prior Lake. Early registration is highly recommended. For more information visit our website at: twincitieswwme.org or contact Brent & Tracy at applications@twincitieswwme.org or (612) 756-8720.

**FAITH FORMATION AND YOUTH MINISTRY****Classes Begin This Week!**

Disciples of Christ Wednesday Nights begins Sept. 25th. We will begin with a Mass at 6:15 pm for all families grades 1-8 followed by a time to meet your child's catechist. All are welcome!

Confirmation & Youth Alive Registration

All Confirmation students (8th-10th grade) and Youth Alive students (11th-12th grade), you can register for confirmation and Youth Alive online on the parish website. Sign up today! Here is the link:

<https://npcatholic.org/registration-and-forms>

IGNITE:

Calling all middle schoolers! "Ignite your faith", Wed, Oct. 23rd. Contact Pamela Sherlock or Emily Shimota for more information. Food! Fun! Faith! Adoration! Benediction! The event is FREE, but registration is REQUIRED! **ALL STUDENTS GRADES 6-7-8 REGISTERED FOR WEDNESDAY NIGHT FAITH FORMATION PLEASE RSVP**, but note that this event is part of your program! You can sign up online here: <https://npacc.wufoo.com/forms/ignite-23-october-2019/>

~ COLLECTION INFORMATION ~**St. Wenceslaus Site****SUNDAY, SEPTEMBER 15, 2019**

Total for 9/15/19	\$24,972
Collections at Mass.....	\$13,652
Electronic Collections.....	\$11,320
Over Challenge for Week.....	+\$9,895
Actual Collections YTD.....	\$160,165
Under Challenge YTD.....	-\$5,336
Challenge for Next Week.....	\$15,078

Explore and deepen your faith while enjoying stunning Fall colors at these popular retreats:

Reflect on your priorities in life by enjoying a fruitful mix of scheduled time to open time. Experience opportunities for unhurried Mass, Confession, one on one Spiritual Direction and Adoration in the spiritually stimulating setting of the retreat center.

Men's October Silent Retreat

Fri., Oct. 18th (7:30 pm) through Sun., Oct. 20th (ending after brunch)

Theme: **Silence; the Icon of God's Mystery**

Includes four conferences on the challenges of trusting Christ in our lives by **Fr. Daniel Manger**, a Camaldolese Benedictine monk and Prior of the Monastery of the Risen Christ in San Luis Obispo, California. Silence is observed after the Opening Welcome to make it easier to absorb the teachings and discern God's will for our lives.

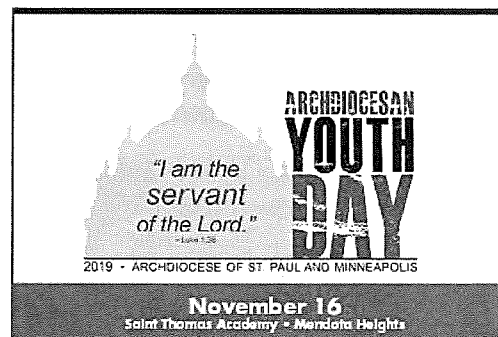
Women's October Midweek (Oct. 1-3) or**Weekend (Oct. 11-13) Retreats.**

Theme: **Rejoice and be Glad; our Call to Holiness**

Today. Call (952) 447-2182 to register or online at: www.franciscanretreats.net.

SAINTS & SUPERHEROES BREAKFAST

Sun., Oct. 13th, from 8 am-noon at Immaculate Conception Catholic Church in Lonsdale. Adults (13+) \$9, Kids (ages 5-12) \$5 (Age 4 and under free). Serving Scrambled Eggs, Sausage, Pancakes, Coffee & Juice. Meet our Law Enforcement, Fire & Rescue Superheroes! All kids dressed as a favorite Saint or superhero will be entered to win prizes! Proceeds will purchase life saving AEDs & First Aid Stations. Sponsored by the Lonsdale Knights of Columbus.

**Calling All High School Teens!**

Archdiocesan Youth Day is Nov. 16th!

Contact Pamela or Emily in the Faith Formation Office for more information! Chaperones are NEEDED!

**SCHOOL NEWS from SWS****Volunteer Opportunity**

The school kitchen is in need of volunteers to help serve lunch to the school children and clean up after. The hours are 10:30 am until 1pm with lunch included! Must have a love to serve and fun attitude:) Please email or call Mary Wick at mary.wick@swsaints.org or (507) 744-5154 and leave message if you have any questions or want to help. Thank You.

growing in faith is a lifelong journey

Your parish family is here to help by offering opportunities for you!

As always, watch the bulletin, Facebook page, and parish website for more details.

Men's Group: Organizational meeting of this group; Thursday, September 26; 6:30 pm in the John XXIII room in the PAC. Join us for fellowship, faith, and food. Please RSVP to Bob Kehrwald. 952-923-7545 (SW site)

The Grand Adventure: A six session series on being a grandparent – 2 options ~
Monday mornings, 9:30-11, led by MaryLynn Gross, beginning September 23 (SW site)
Tuesday evenings, 6:30-8, led by Judy Deutsch, beginning October 1 (SW site)

Jesus Approaches; Women in the Bible: an eight-week session, author Liz Kelly
Tuesday evenings 6-7:30 led by Amber Dudley, beginning September 24, (SW site)
Contact Amber Dudley or faith formation office for registration or information

Young Catholic Families Mom's group: Book Study; *Overcoming Fear, Worry and Anxiety*: Replace your worries with God's comforting peace. Saturday morning or Sunday evening options.

Care for Creation, Who is My Neighbor? How can we learn, grow, and respond to the Church's teaching on caring for creation and the poor? Thursday, October 3, 6:30-8 pm, Faith Formation Office

Pilgrimage Statue of Our Lady of Fatima; 24-hour Adoration begins with 8 am Mass on October 4 and ends with 8 am Mass on October 5; sign up for Adoration times in back of church or on parish website.

Bible Basics: Don't know much about how to maneuver through the Bible? You're not alone! Join MaryLynn to start with the basics. Wednesday, October 9; 6:15-7:30 Chapel (SW site)

Fall Formation kick-off: Sunday, October 13 ~ 3:30 pm Mass; Emily Shimota, our new Youth Minister, will give a short talk after Mass – all are welcome! Food trucks and fun!

Trunk or Treat: Saturday, October 26; 3:30-4:30 pm. Decorate your *trunk* and *treat* the children of our community. (SW site) All ages of trunk participants wanted. Details coming.

Knights of Columbus Procession of Life: October 27, A Respect Life Mass; beginning with a procession to the altar. We hope to have all ages and stages of life represented. 10 am (SJ site)

Great Story of Jesus Retreat: The story of Jesus told in nine acts **for women**. November 2; 2-8:15 pm (SJ site)

Archdiocesan Synod: Thursday, November 7, 6-9 pm. The goal of the Archdiocesan Synod is to help Archbishop Hebda discern, through a consultative process, the pastoral priorities of our local Church today – and into the near future. St. Wenceslaus Church

Operation Christmas Child: Saturday, November 9, 9-10 am, PAC (SW site)
Bring your kids and/or your items and let's pack some shoeboxes! Watch for more information. (SW site)

W.O.N. (Women Only Night) Liz Kelly, author, *Jesus Approaches; Women in the Bible* will be our guest speaker Sunday, November 10; doors open at 6, speaker from 6:30-7:30 (SW site)

It's Show Time! Pre-Advent movie! *Mary, the Mother of God*; Catholicism series by Bishop Barron; offered on Wednesday, November 13 at 6:15 pm and Thursday, November 14 at 9 am. Chapel (SW site)

Rejoice: Advent meditations with Joseph: An independent or small group study. More information to come...

Advent Crafts: A Sunday morning during Advent, 9:30 am. Watch for more details! Young Catholic Families

LITURGIES & PRIEST'S MASS INTENTIONS

INCLUDES ALL CHURCH LOCATIONS
WEEK OF SEPTEMBER 23-29, 2019

Rosary at St. Wenceslaus
MONDAY – FRIDAY at 7:30 am
SATURDAY at 8:00 am

Monday, September 23

8:00 am Word & Communion – SW

Tuesday, September 24

8:00 am Mass – SW

Wednesday, September 25

8:00 am Dennis Witt† – SWS Mass – SW

6:30 pm Opening Faith Formation Mass – SW

Thursday, September 26

8:00 am Edwin Maruska† – Mass – SW

Friday, September 27

8:00 am David L. Skluzacek† – Mass – SW

Saturday, September 28

8:00 am Ray Harpel†

..... Feast of St. Wenceslaus Mass – SW

4:00 pm Confession – SW

5:00 pm Leonard Pexa†,

..... Alice M. Schmitz† – Mass – SW

7:15 pm Confession – SS

8:15 pm Mass for the People – Mass – SS

Sunday, September 29

8:00 am Catherine Herrmann† – Mass – SS

8:30 am Richard & Jean Ann Bisek†,

..... William & Mary Bisek†,

..... Harold & Angie Shimota 63rd Anniversary

..... Mass – SW

10:00 am Severin & Rosella Riesgraf†

..... Mary Jane Kes† – Mass – SJ

10:30 am Richard Deutsch†, Robert Bednar†

..... Mr. John Phillips† – Mass – SW

STAFF DIRECTORY NEW PRAGUE AREA CATHOLIC COMMUNITY**Rev. Eugene Theisen**

Pastoral Administrator

952-758-0469

Eugene.Theisen@npcatholic.org

Peter Guzulaitis

Parish Business Administrator

952-758-0465

Peter.Guzulaitis@npcatholic.org

MaryCarol Wolf

Pastoral Ministry Associate

952-758-0463

MaryCarol.Wolf@npcatholic.org

Ruth Weinandt

Parish Accountant &

Pastoral Ministry Associate

952-758-0466

Ruth.Weinandt@npcatholic.org

Laura Schoenecker

Faith Formation Director

Pre-K through Adult

952-758-5131

Laura.Schoenecker@npcatholic.org

Pamela Sherlock

Youth Ministry 6-8,

Confirmation Coordinator &

WCC Site Coordinator

952-758-0477

Pamela.Sherlock@npcatholic.org

Emily Shimota

Youth Ministry, Grades 6-12

952-758-0486

Emily.Shimota@npcatholic.org

Mary Higgins

Adult Faith Formation Associate

952-758-0464

Mary.Higgins@npcatholic.org

Kim Doyle

St. Wenceslaus School Principal

952-758-3133

Kim.Doyle@swsaints.org

Sarah Gullickson

Preschool Director

952-758-0480

Sarah.Gullickson@swsaints.org

Debbie Gregor

Director of Liturgical Music at SW

952-758-4207

Debbie.Gregor@npcatholic.org

Lisa Levenson

Parish Administrative Assistant

952-758-3225

Lisa.Leverson@npcatholic.org

PARISH BUSINESS OFFICE

215 Main St E, New Prague, MN 56071

PH 952-758-3225 FAX 952-758-2960

FAITH FORMATION OFFICE

On campus in Parish Activity Center

ST. WENCESLAUS SCHOOL

227 Main St E, New Prague, MN 56071

PH 952-758-3133 FAX 952-758-2958

LITTLE SPIRITS PRESCHOOL

On campus of SWS ~ 1950's building

952-758-0480

MAINTENANCE DEPARTMENT

952-758-2327

MEETINGS & EVENTS CALENDAR

WEEK OF SEPTEMBER 23-29, 2019

Monday, September 23:

The Grand Adventure, 9:30-11 am

– SW Daily Chapel

SWS Volleyball Games, 3-6:30 pm – SWS Gym

Tuesday, September 24:

Women in the Bible, 6-7:30 pm

– SW Daily Chapel

Wednesday, September 25:

Early Morning Scripture Study, 7-8 am

– Pius X Room, Church Basement

Disciples of Christ, 6:15-7:30 pm – SW Church

Adult Choir, 7:15-8:45 pm – SW Choir Room

Thursday, September 26:

Men's Group, 6:30-8 pm

– Faith Formation Office,

Parish Activities Center

Friday, September 27:

Adoration, 9 am-midnight – SW Daily Chapel

Saturday, September 28:

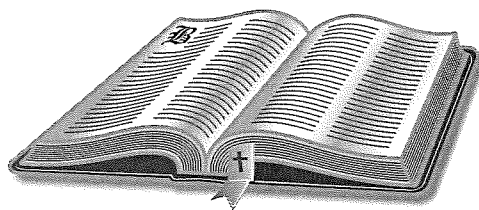
SWS School Marathon – SW Campus

Sunday, September 29:

No Events

SCRIPTURE READINGS

WEEK OF SEPTEMBER 23-29, 2019

**Monday, September 23:**

EZR 1:1-6 / LK 8:16-18

Tuesday, September 24:

EZR 6:7-8, 12B, 14-20 / LK 8:19-21

Wednesday, September 25:

EZR 9:5-9 / LK 9:1-6

Thursday, September 26:

HG 1:1-8 / LK 9:7-9

Friday, September 27:

HG 2:1-9 / LK 9:18-22

Saturday, September 28:

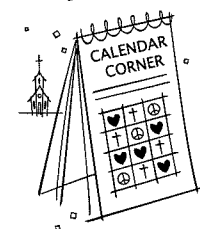
ZEC 2:5-9, 14-15A / LK 9:43B-45

Sunday, September 29:

AM 6:1A, 4-7 / 1 TM 6:11-16 / LK 16:13-31

**CHURCH OF ST. WENCESLAUS
CALENDAR CORNER**

Thank you to the Following Sponsors:
Strike Force Bowl and ProShop,
Busch Bros. CNC Machining
& Hartmann Well Drilling & Service

**Date:**

Sept. 18, 2019

Winner:

Brad
Breeggemann



Patty's Place • Specialty Coffees • Fresh Pastries • Hand Dipped Ice Cream • Cake Decorating 108 E Main Street #1 New Prague 952-758-5808 Open 7 Days A Week	 NPCL (New Prague-Caska-Louisville) Mutual Insurance Company 205 10th Ave. NE New Prague, MN 56071 952-758-5964 www.npclinsurance.com Competitive Rates for Farm & Home Since 1882	SKLUZACEK  Cabinetry & Woodworking Dave Skruzacek • 612-986-8443 New Prague, MN	 First Bank & Trust 1101 1st Street SE, New Prague • 952-758-4491 BANkeasy.com MEMBER FDIC
 NEW PRAGUE FAMILY & SPORTS CHIROPRACTIC CENTER Dr. Mike Kilpatrick 952-758-4121	 Scott & Jenny Smisek www.scottsmechanicalinc.com	WORNSON GOGGINS Attorneys Arbitrators Mediators 119 E. MAIN ST., NEW PRAGUE 952-758-4161 WWW.LAWYERSNP.COM	BACK and NECK CLINIC of NEW PRAGUE Dr. Laurie A. Reiner Hughes Dr. Jeremy Tupy • Dr. Jolene Otremba DOCTORS OF CHIROPRACTIC Located across from The New Prague Times 201 East Main Street 952-758-5135
Bruzek FUNERAL HOME Serving With Compassion Since 1903 Steve and Mary Frost Cremation & Funeral Planning 952-758-4949	 MAIN ST. DENTAL Jon P. Colling, D.D.S. Ruth Peterka, D.D.S. GENERAL DENTISTRY Thomas W. Smyth, D.D.S. newpraguedentist.com OFFICE HOURS MON-FRI 211 10th Ave. NE New Prague 952-758-2376	Edina Realty  Pat Sullivan REALTOR 952.457.0479 patsullivan@edinarealty.com www.edinarealty.com/pat-sullivan-realtor	MARQUARDT JEWELERS  New Prague
 Parkview Medical Clinic Daniel R. Berg, MD Michael P. O'Rourke, MD Jean Craig, MD Heather Hamernick, MD New Patients Welcome Same Day Appointments Available Saturday Morning Appointments www.parkviewclinic.com 952-758-2535	 NEW PRAGUE AUTO REPAIR www.NewPragueAutoRepair.com Since 1974 Gary Kohoutek, Owner 952.758.4471 205 4th Ave. SW New Prague, MN 56071	 KUBES Furniture & Flooring 133 Main Street West New Prague, MN 56071 952-758-4588 www.kubeshomefurnitureflooring.com Mon-Wed. 9-5, Thur. 9-7, Fri. 9-5, Sat. 9-3	This Space Available Call 952-758-4435 Kneip & Associates INSURANCE medical dental life Daniel Kneip 952-758-3049 kneip.ins@gmail.com Committed to product understanding and personal service.
Ambroz Plumbing, Inc. Paul Ambroz New Construction - Remodel - Service 952-758-6265 • Cell 952-292-4413 Lic# 059407-PM	TUPY INSURANCE AGENCY, INC. For Your Personal or Business Insurance Needs We are here to Serve You! 111 East Main Street New Prague, MN 952-758-2433	 Knights of Columbus Council #2023 K.C. Hall in New Prague Weddings, Receptions, Anniversaries, Card Tournaments, Birthday Parties Call Larry at 952-873-6369 or K.C. Hall at 952-758-3656 Bingo (License Permit # 01187) October-April Come and have fun! 411 - 4th Ave. SW 3rd Degree Grand Knight Luverne Malecha 651-387-8048 4th Degree Faithful Navigator John Wiskocil 612-581-7210 Ladies Aux. Meetings 4th Monday, 7 pm Contact Rosella Kes 952-758-3578 Insurance Agent Dave Goedtko 507-720-1652	 STEFENI TUPY REALTOR 952-486-3082 www.StefTupy.com Edina Realty Stefeni Tupy@EdinaRealty.com
 MACH LUMBER Paul Kratochvil , Owner Convenient - We Deliver! 952-758-3235 M-F 7-5; Sat. 8-Noon 201 Second Ave. SW, New Prague 1 block S of Main St., across from ConAgra	 Wencel Kubes New Prague 952-758-2262	YOU CALL... WE HAUL...  Complete Household Transfer Licensed • Bonded Reasonable Rates TIM or JOHN 952-758-2552 16264 310 St. New Prague	 Marlene Mushitz , CRS, GRI, CDPE 1301 1st St. NE New Prague 612-978-2222 www.DynamicMarlene.com
 Odenthal Landscaping Retaining Walls, Patios & Much More For All Your Landscaping Needs New Prague, MN www.odenthallandscaping.com Phone & Fax: 507-364-5460 Cell: 612-703-4803	 5% Commission Full Service Since 1988 KubesRealty.com	NEW PRAGUE VETERINARY CLINIC Dr. William F. Vollmar Dr. Katie Vollmar Boarding Services 1003 East Main St. New Prague, MN 952-758-2881	 AMERICAN FAMILY INSURANCE Melissa Kreuser, Agent Bus: (952) 758-5460 1301 1st St NE, New Prague
DOUG VAYDA Specialist in the practice of Orthodontics 101 Central Ave. New Prague 952-758-6999	 MALA STRANA REHABILITATION CENTER & Assisted Living New Prague • 952-758-2511	Suel Printing Company Pleased to be the printers of your Parish Bulletin. 200 Main St. East, New Prague 952-758-4435 awann@suelprinting.com	SKLUZACEK CONSTRUCTION, INC. Steve Skruzacek, Owner #0004897 952-758-4158
Positively Impacting Peoples' Lives Since 1881  Roundbank New Prague: 952-758-BANK (2265) • Farmington: 651-463-8300 www.roundbank.com Member FDIC 			
952.758.2879 Ron Schoenecker Your Local Agent 105 Main St W New Prague, MN 56071 rschoenecker@farmersagent.com 	 Michael Traxler WEALTH MANAGEMENT, LLC Investments & Financial Planning Solutions Securities & Advisory Services offered through Michael Traxler Wealth Management, LLC a Registered Investment Advisor in the State of Minnesota. Michael P. Traxler Financial Advisor 222 Main Street East New Prague, MN 56071 952-758-8060		