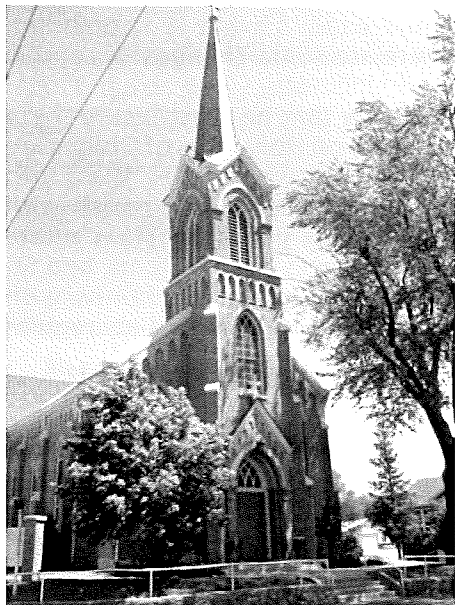


**28TH SUNDAY IN ORDINARY TIME**

**OCTOBER 13, 2019**

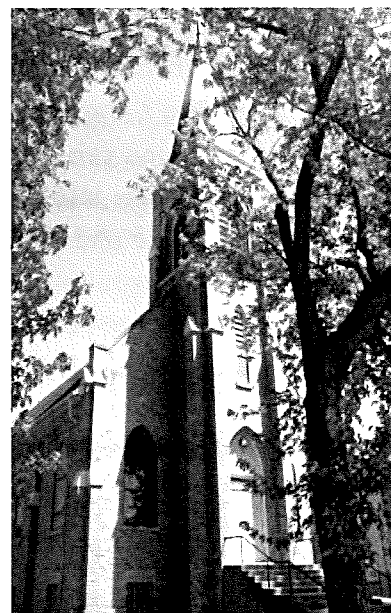
## **To Renew All Things in Christ**



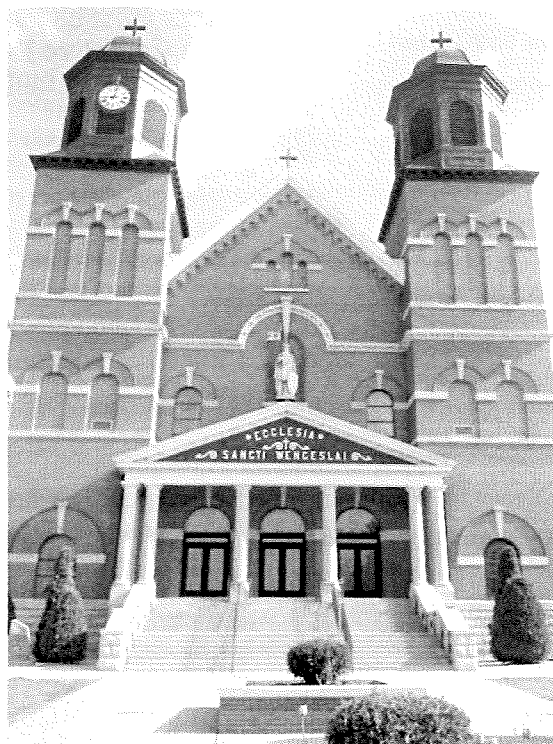
**St. John the Evangelist**

**Parish Mission Statement**

*We are a Catholic community forming disciples of Jesus Christ dedicated to loving God through our worship, sharing the Good News, and loving service to others.*



**St. Scholastica**



**St. Wenceslaus**

## **NEW PRAGUE AREA CATHOLIC COMMUNITY**

***Three Sites of Worship, One Community of Faith***

**Including St. Wenceslaus &  
The Western Catholic Community of St. John the Evangelist and St. Scholastica**

215 MAIN STREET EAST ■ NEW PRAGUE, MN 56071 ■ 952-758-3225 ■ NPCATHOLIC.ORG

**We welcome you...**

Welcome to the greater New Prague Area Catholic Community which includes the Church of St. Wenceslaus and the Western Catholic Community of St. John the Evangelist and St. Scholastica. We are happy you are here. Should you be visiting just for today, WELCOME! If you are seeking a church home, we would be honored to have you consider joining our faith community. If you are interested in a membership, please phone the parish office for assistance and registration. If you are over the age of 21, we ask that you register. Please feel free to stop by the parish office during office hours to register or you may do so online. Again, we are happy you are here.

***At the Church of St. Wenceslaus*****PARISH OFFICE HOURS**

Monday – Friday 8:30 am to 4:00 pm

**MASS SCHEDULE****Weekend Masses**

Saturday..... 5:00 pm  
 Sunday..... 8:30 & 10:30 am

**Morning Word & Communion**

Monday..... 8:00 am

**Weekday Masses**

Tuesday-Friday..... 8:00 am

**SACRAMENTS & OTHER INFORMATION****Anointing of the Sick**

Available to those who are seriously ill or suffering from a prolonged illness. Call 952-758-3225

**Confirmation**

Preparation required. Call 952-758-0477

**Reconciliation**

Saturdays at 4 pm in the church.

**Baptism**

Preparation required. Call 952-758-3225

**Marriage**

Six months to one year preparation time required.  
 Call 952-758-3225

**Rosary**

Monday – Friday 7:30 am & Saturday 8:00 am in the church.

**Fatima Prayer Cell**

Monday – Wednesday in the SW Daily Chapel  
 after 8 am service.

**Adoration**

Friday 9:00 am to midnight in the SW Daily Chapel.

**Early Morning Scripture Study**

Wednesday 7:00 to 8:00 am in Pius X Room  
 in church basement.

**Prayer Chain**

Judy: 952-758-2220 or Arnita: 952-758-4943

**BeFrienders**

Ann Schoenbauer: 952-758-3456 or  
 Lois Giesen: 952-758-2138

**From the Desk of Father Eugene Theisen****Padre's Pen –  
Mass Intentions**

Some of you may have noticed some changes in how we are doing Mass intentions so I think I should explain what is happening, what our policy is, and why there are some changes:

- 1) Every pastor/parochial administrator has a personal obligation outlined in Canon Law that he must insure there is one Sunday Mass and one Mass on Holy Days of Obligation offered for the people. This is known as the "Missa pro Populo," or "Mass for the People." We are one parish with three churches, so you will see this particular Mass rotate between our three sites of St. Wenceslaus, St. John, and St. Scholastica. There can be no stacking of intentions with this Mass and this Mass cannot be offered at regular weekday Masses.
- 2) We also are not allowed to stack Mass intentions at more than 2 Masses in a week (known as a "Collective Mass"). And all those who have intentions at these Collective Masses must be informed that the intention is being offered at the Collective Mass. In addition, the parish cannot keep the Mass offerings beyond the first intention on those Collective Masses.

Therefore:

- a. As a general rule, we are allowed only one Mass intention for one Mass. If we get large numbers of intentions for a given day:
- b. There will be one Collective Mass offered at Sunday Masses and one offered during the weekday Masses and the people asking for those intentions will be informed that it will be the Collective Mass for the week.
- c. For any offerings given beyond the first intention, we will keep track of those amounts and send those monies for vocations (seminarians/religious) first and foremost for vocations from our parish.
- d. Families are allowed and may combine intentions into one for family members (e.g. For the deceased parents of Sibley and Henrietta Von Sneaker, etc.)
- 3) The offering of a Mass is not dependent on the presence and participation of the individual making the offering. This is the prayer of the Church gathered for the intention of that individual. The best case scenario is if the person making the offering is present, but that cannot always be accommodated based on the restrictions we have for Mass intentions directed by Canon Law and local Archdiocesan Policy. We will do our best to accommodate but remember that the most important aspect of this is for the prayers to be offered.
- 4) To assist in the scheduling of Mass Intentions in accord with pertinent law and policy, we will no longer accept Mass Intentions via mail. Please come to the office in person or call the office and arrange for the Intention and offering with Lisa.
- 5) Lastly, to give everyone an opportunity to have Masses offered on Sundays we will limit multiple requests to 2 Sunday Masses that are not part of the weekly Collective Mass Intention.

*Continued on Page 3*

## Western Catholic Community

*Continued from Page 2*

On another note, you will notice below a table indicating our parish debt. I have asked a number of parishioners in the past several months and none could tell me how much debt we have. In the interest of transparency (and after consultation with my mentor pastors) we will be publishing weekly the amount of our debt.

Ad Christum per Mariam (To Christ through Mary),

Fr. Eugene Theisen

*Parochial Administrator*

**New Prague Area Catholic Community**

Parish Debt Last Month	Parish Debt This Month
\$511,837.86	\$502,074.60

### St. John's & St. Scholastica

#### Women's Retreat!

The Great Story of Jesus. Dig into our salvation history! The day will present the Gospel in video format. There will be time for reflection, small group discussion, and light dinner. First Saturday Devotions with Exposition, Confessions, and Benediction followed by Mass at 8:15 pm will also be available. Please join us on Nov. 2nd! Free will offering for materials! 2-8:15 pm, Koenig Hall, St. John's, Union Hill. Call Pamela for more information at (952) 758-0477 or [pamela.sherlock@npcatholic.org](mailto:pamela.sherlock@npcatholic.org).

#### Mass Schedule Volunteers - St. John's & St. Scholastica

October 19 & 20, 2019	Saturday St. Scholastica 8:15 PM	Sunday St. Scholastica 8:00 AM	Sunday St. John's 10:00 AM
<b>Lector</b>	MaryCarol Wolf	Karen Odenthal	Danielle Solheid
<b>Eucharistic Ministers</b>	Sandy Kubes	Geraldine Odenthal, Marlene Dohmen & Millie Odenthal	Jonila Weiers, Dave Webb & Lori Wooten
<b>Servers</b>	Samantha & Julia Kubes	Julia Schoenecker & Matthew Schoenecker	Katelynn & Craig Brezina, Mitchel & Hunter Pomije
<b>Gift Bearer Family</b>		John Schmitz Family	Anthony Brezina Family

### Important Information

#### Weekend Masses

Saturday.....	8:15 pm	St. Scholastica
Sunday.....	8:00 am	St. Scholastica
Sunday.....	10:00 am	St. John's

#### SACRAMENTS & OTHER INFORMATION

#### Reconciliation

Saturday.....	7:15 pm	St. Scholastica
---------------	---------	-----------------

#### Baptism & Confirmation

Preparation required. Call the Parish Office at 952-758-3225.

#### Anointing of the Sick

Call the Parish Office at 952-758-3225.

#### Marriage

Prep required. Call Fr. Eugene Theisen.

#### Adoration

Fridays 9:00 am to midnight at St. Wenceslaus Daily Chapel

#### WESTERN CATHOLIC COMMUNITY OFFICE

20087 Hub Drive, New Prague 56071  
952-758-4642

#### Rev. Eugene Theisen

**Parochial Administrator**

952-758-0469

[Eugene.Theisen@npcatholic.org](mailto:Eugene.Theisen@npcatholic.org)

#### Hall Rental:

**Pamela Sherlock** 952-758-0477 or email:

[pamela.sherlock@npcatholic.org](mailto:pamela.sherlock@npcatholic.org)

#### Prayer Chain WCC:

<b>Carol Bauer</b>	952-457-4057
<b>Noreen Giesen</b>	952-758-2608
<b>Marlene Dohmen</b>	952-492-6879

#### COLLECTION INFORMATION

#### WESTERN CATHOLIC COMMUNITY SUNDAY, OCTOBER 6, 2019

<b>Total Collected 10/6/19 .....</b>	<b>\$1,806</b>
<b>Under Budget for the Week .....</b>	<b>-\$1,348</b>
<b>Actual Collections YTD.....</b>	<b>\$33,523</b>
<b>Under Budget YTD .....</b>	<b>-\$10,630</b>
<b>Budget for Next Week .....</b>	<b>\$3,154</b>

**Thank you for your support!**

**Bulletin E-mail: [info@npcatholic.org](mailto:info@npcatholic.org)**

**Website: <http://www.npcatholic.org>**

## PARISH AND AREA NEWS

### Area Separated & Divorce Support Group

will meet Tues., Oct. 15th, 7-8:30 pm, in the John XXIII Room of the St. Wenceslaus Parish Activities Center; enter through the gym door from the church parking lot. If you or a loved one is experiencing the loss of a long-term relationship, married or unmarried, you may desire to connect with this group since they understand what you are going through at this time in your life. Questions? Please call Deacon Bob Wagner at (612) 703-0808 or Mary Pieper at (952) 873-6781.

### SUPER SALE with Variety!

A team of people would like to give back and help others with a HUGE sale! This event is coming up Sat., Oct. 19th, from 9 am-6:30 pm and Sun., Oct. 20th, from 9 am-12:30 pm, at St. Wenceslaus Parish Activities Center. Items include clothing, toys, decorations, household items, baskets, crafts, and gift items. All gently used or brand new. Clothing sizes: toddler to juniors, men's-medium to large, and women's-small to medium. Unbelievable prices on all things including clothing, with most ranging from \$2 to \$5. Don't miss out on being set for the fall and winter along with getting a jump on the holidays! All proceeds going to American Cancer Society, Syndrome Research, and churches of the Western Catholic Community! **Come join in on helping others and spread the word to family and friends!**

### St. Wenceslaus CCW News:

CCW Members, Mary Wick is still seeking help to hand out Thank You gifts after all Masses on Oct. 19th and 20th. All that is required is to go to the back of church after Communion and take a basket with goodies and either hand them or let them take one from your basket. Please email [mary.wick@swsaints.org](mailto:mary.wick@swsaints.org) or call her home (507) 744-5154 and leave a message.

- Mark your calendar for the SW Deanery Mission Event, Oct. 24th beginning at 5:30 pm at Our Lady of the Prairie in Belle Plaine. Fliers with more information are on the bulletin boards.
- Dad's Waffle Breakfast fundraiser is Oct. 27th. We are still in need of volunteers. Please call Marcy at 758-3995 if you would like to help. We have the Love of Our Blessed Mother in our hands.

### St. Wenceslaus Annual Handmade Market

Join us to shop the goods made by local artists, makers, and craftsmen at St. Wenceslaus Parish Activity Center on Sat., Oct. 26th from 9 am-2 pm. This is a great opportunity to get some Christmas gifts checked off your list.

### Trunk or Treat ~ Oct. 26

Trunk or Treat is a free, fun and safe event that brings Halloween to our church parking lot. There is no cost to enter but you must be prepared to hand out candy/prizes to trunk or treaters. This event encourages families or groups to decorate their vehicles tailgate/trunk and handout goodies to the children who attend.

We're in need of several more "trunks" to make this event a success. Set up starts at 2:45 pm on Sat., Oct. 26th. Get your creative juices flowing and have fun!

### Need help with those leaves?



On Sun., Oct. 27th, Youth Ministry groups from our parish will once again be helping people rake their lawns. Please call Pamela at the Faith Formation office; (952) 758-0477 with your name, address, and phone

number if you would like to have your lawn raked. We will send a team of happy high schoolers to your door. There is no charge, but we ask that you provide your own leaf bags. We will rake as many lawns as time allows depending on the number of volunteers. Unfortunately, we will not be having a make-up day if the weather is bad.

### Prayer of Remembrance

It is at this time of year when nature begins to enter into its winter sleep that we are reminded of our loved ones who have died. On **Nov. 3rd at 6 pm**, we will be remembering in prayer all those from our community who have died since All Souls Day of last year. We invite all who grieve the death of a loved one to pray with us that evening. Hospitality on the lower level of the church will follow our prayer.

### Archdiocesan Synod ~ Upcoming Prayer and Listening Events

What's working and what's not in the Archdiocese? Archbishop Hebda wants to hear from you! Please prayerfully consider attending an upcoming Prayer and Listening Event, as part of the Pre-Synod Process and make your voice heard. Your input will help guide the Archdiocese over the next 5-10 years. There are 20 Prayer and Listening Events. The next three are:

- **Sat., Oct. 26, 9 am-noon at St. Peter (Forest Lake)**
- **Tues., Oct. 29, 6-9 pm at Divine Mercy (Faribault)**
- **Thurs., Nov. 7, 6-9 pm at St. Wenceslaus (New Prague)**

Pray for the Holy Spirit to direct all of us in this mission (here is a prayer to pray each day):  
Come Holy Spirit.

Make our ears to hear

Make our eyes to see

Make our mouths to speak

Make our hearts to seek

Make our hands to reach out

and touch the world with Your love.

Mary, Mother of the Church, Pray for us. AMEN

Please see the insert in this bulletin for more information. You may also visit [archspm.org/synod](http://archspm.org/synod).

### SUPPORT OUR PATRONS

who make this bulletin possible by their advertising.

**NEW PRAGUE AUTO REPAIR, GARY KOHOUTEK, OWNER**

### Televised Masses on Bevcomm TV, our Website, and in the Nursery

Are you (or someone you know) homebound or unable to attend Mass at St. Wenceslaus? You can watch (the previous week's) Mass on Bevcomm TV Channel 6 on Sundays at 8:30 & 11:30 am and on Wednesdays at 4 pm (a video of Mass will also be posted on our Website [www.npcatholic.org](http://www.npcatholic.org)). Also, if you have wee little ones at Mass, the Mass will be live on TV in the nursery at all Masses during the weekend at St. Wenceslaus.

### World Mission Sunday

Oct. 19/20 ~ Baptized and Sent: *The Church of Christ on Mission in the World*

Pope Francis has called this year's World Mission Sunday month, an Extraordinary Missionary Month, in honor of the 100th anniversary of *Maximum Illud*, Pope Benedict XV's letter focusing on our missionary call. World Mission Sunday is the celebration of this special month. This celebration and appeal of the Society for the Propagation of the Faith supports our brothers and sisters in over 1,100 mission dioceses worldwide needing help. Please remember that we are called to be missionary by our baptism and support those who are serving as missionaries by offering prayers and financial gifts during World Mission Sunday in the parish collection.

### ~ COLLECTION INFORMATION ~

St. Wenceslaus Site

SUNDAY, OCTOBER 6, 2019

<b>Total for 10/6/19</b> .....	\$10,796
Under Challenge for Week.....	-\$5,772
Actual Collections YTD.....	\$194,852
Under Challenge YTD.....	-\$17,724
Challenge for Next Week.....	\$16,568

### Women's Connection

Tues., Oct. 15th, FaithPoint Church

Join NP Christian Women when Gretchen Havlicek of FaithPoint presents "The Power of Sharing Our Stories." Our stories can have a meaningful impact on our relationships in our families, with our friends, and beyond. Spiritually, we have the opportunity to grow as we share our story and listen to others. Gretchen will share the different ways to capture our stories, our purpose in doing so, and ideas to be more intentional about incorporating our faith journey in the stories we share. Potluck at 6:30 pm, message at 7:00. Call Mary Lynn (952-486-2311) with questions or if you want to ride together.

### Men's October Silent Retreat

**Fri., Oct. 18th (7:30 pm) through Sun., Oct. 20th (ending after brunch)**

Theme: **Silence; the Icon of God's Mystery**

Includes four conferences on the challenges of trusting Christ in our lives by **Fr. Daniel Manger**, a Camaldolese Benedictine monk and Prior of the Monastery of the Risen Christ in San Luis Obispo, California. Silence is observed after the Opening Welcome to make it easier to

absorb the teachings and discern God's will for our lives. Call (952) 447-2182 to register or online at: [www.franciscanretreats.net](http://www.franciscanretreats.net).



## FAITH FORMATION AND YOUTH MINISTRY

### IGNITE:

Calling all middle schoolers! "Ignite your faith", Wed, Oct. 23rd. Contact Pamela Sherlock or Emily Shimota for more information. Food! Fun! Faith! Adoration! Benediction! The event is FREE, but registration is REQUIRED! **ALL STUDENTS GRADES 6-7-8 REGISTERED FOR WEDNESDAY NIGHT FAITH FORMATION PLEASE RSVP**, but note that this event is part of your program!

You can sign up online here:

<https://npacc.wufoo.com/forms/ignite-23-october-2019/>

### Join the Fun for Rake -n- Run

Coming up on Make A Difference Day, Oct. 27th. Call the Faith Formation Office for more information or to volunteer! All youth grades 9-12 are invited to participate. We must have a signed parent permission slip. Call Pamela for more information.

### Calling All High School Teens!

Archdiocesan Youth Day is Nov. 16th!

Contact Pamela or Emily in the Faith Formation Office for more information! Chaperones are NEEDED!



## SCHOOL NEWS from SWS

### New Winter Coat Collection

We are doing a NEW winter coat collection for "Coats for Kids" sponsored by the State Knights of Columbus. These coats are distributed around the entire State of MN. Our teachers will deliver the coats when they attend the Catholic school conference on Oct. 16th. Please send new winter coats to your child's classroom teacher or to the office before Oct. 15th.

*But thanks be to God; He gives us the victory through our Lord, Jesus Christ.*

~ 1st Corinthians 15:57

# W.O.N.

## Women Only Night

*Jesus Loves You, and so Does His Church:*

The Critical Importance of a Mighty, Majestic Faithful Woman's Heart

Join us for another night JUST...FOR...YOU!

Sunday, November 10, 2019

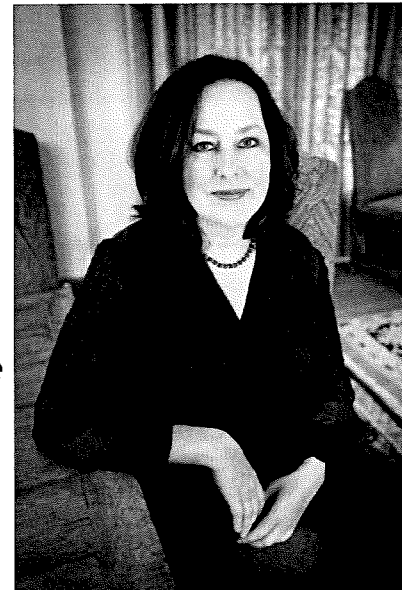
Doors open at 6 pm, speaker from 6:30-7:30

A quote from our speaker, Liz Kelly:

First things first: Woman, **you matter**. You are needed - in your family, among your friends, in your work, the world, and the Church. I have absolute confidence that God wants to see you flourishing in all of these arenas, even as you struggle, fail, or fall. Jesus has his heart set - on you. And he has important work for you to do.

Liz (Elizabeth) Kelly, a native Minnesotan, is a noted speaker, retreat leader, award-winning author, spiritual director and adjunct professor at the University of St. Thomas.

We are delighted to have Liz come to share her thoughts with us .



*Ladies—bring a friend and join us for a  
night of fellowship and inspiration.*

*Sponsored by: NPACC Adult formation and the CCW*



**LITURGIES & PRIEST'S MASS INTENTIONS**

INCLUDES ALL CHURCH LOCATIONS  
WEEK OF OCTOBER 14-20, 2019

**Rosary at St. Wenceslaus**  
**MONDAY – FRIDAY at 7:30 am**  
**SATURDAY at 8:00 am**

**Monday, October 14**

8:00 am..... Word & Communion – SW

**Tuesday, October 15**

8:00 am..... Dorothy Skluzacek† – Mass – SW

**Wednesday, October 16**

8:00 am..... Bless the Family – Mass – SW

**Thursday, October 17**

8:00 am..... Mass – SW

11:00 am..... Mass – Mala Strana

**Friday, October 18**

8:00 am..... Roger Zaun† – Mass – SW

**Saturday, October 19**

4:00 pm..... Confession – SW

5:00 pm..... Dorothy Skluzacek†,

..... Alice M. Schmitz† – Mass – SW

7:15 pm..... Confession – SS

8:15 pm..... Mass for the People – Mass – SS

**Sunday, October 20**

8:00 am..... Marcella Kaufenberg† – Mass – SS

8:30 am..... Fritz Hertaust†, Pauline Krenik†,

..... Emil & Clara, Arnie & Roger Kes† – Mass – SW

10:00 am..... Ralph Weiers† – Mass – SJ

10:30 am..... Frances, Adeline A. & Doug Busch†

..... Mass – SW

11:45 am..... Baptism – SW

**STAFF DIRECTORY** NEW PRAGUE AREA CATHOLIC COMMUNITY**Rev. Eugene Theisen**

*Pastoral Administrator*

952-758-0469

Eugene.Theisen@npcatholic.org

**Peter Guzulaitis**

*Parish Business Administrator*

952-758-0465

Peter.Guzulaitis@npcatholic.org

**MaryCarol Wolf**

*Pastoral Ministry Associate*

952-758-0463

MaryCarol.Wolf@npcatholic.org

**Ruth Weinandt**

*Parish Accountant &*

*Pastoral Ministry Associate*

952-758-0466

Ruth.Weinandt@npcatholic.org

**Laura Schoenecker**

*Faith Formation Director*

*Pre-K through Adult*

952-758-5131

Laura.Schoenecker@npcatholic.org

**Pamela Sherlock**

*Youth Ministry 6-8,*

*Confirmation Coordinator &*

*WCC Site Coordinator*

952-758-0477

Pamela.Sherlock@npcatholic.org

**Emily Shimota**

*Youth Ministry, Grades 6-12*

952-758-0486

Emily.Shimota@npcatholic.org

**Mary Higgins**

*Adult Faith Formation Associate*

952-758-0464

Mary.Higgins@npcatholic.org

**Kim Doyle**

*St. Wenceslaus School Principal*

952-758-3133

Kim.Doyle@swsaints.org

**Sarah Gullickson**

*Preschool Director*

952-758-0480

Sarah.Gullickson@swsaints.org

**Debbie Gregor**

*Director of Liturgical Music at SW*

952-758-4207

Debbie.Gregor@npcatholic.org

**Lisa Levenson**

*Parish Administrative Assistant*

952-758-3225

Lisa.Leverson@npcatholic.org

**PARISH BUSINESS OFFICE**

215 Main St E, New Prague, MN 56071

PH 952-758-3225 FAX 952-758-2960

**FAITH FORMATION OFFICE**

On campus in Parish Activity Center

**ST. WENCESLAUS SCHOOL**

227 Main St E, New Prague, MN 56071

PH 952-758-3133 FAX 952-758-2958

**LITTLE SPIRITS PRESCHOOL**

On campus of SWS ~ 1950's building

952-758-0480

**MAINTENANCE DEPARTMENT**

952-758-2327

**MEETINGS & EVENTS CALENDAR**

WEEK OF OCTOBER 14-20, 2019

**Monday, October 14:**

The Grand Adventure, 9:30-11 am

– SW Daily Chapel, Parish Activities Center

**Tuesday, October 15:**

SWS Volleyball Games, 4:30-6:30 pm – SW Gym

The Grand Adventure, 6:30-8 pm

– SW Daily Chapel

Separated & Divorce Support Group,

6:45-8:30 pm – John XXIII Room,

Parish Activities Center

Women in the Bible, 7-8:30 pm

– Faith Formation Office,

Parish Activities Center

**Wednesday, October 16:**

*No School – SWS*

Early Morning Scripture Study, 7-8 am

– Pius X Room

Adult Bells & Choir – SW Choir Room

**Thursday, October 17:**

*No School – SWS*

NPACC Book Club, 6:30-8 pm – John XXIII Room,

Parish Activities Center

**Friday, October 18:**

*No School – SWS*

Adoration, 9 am-midnight – SW Daily Chapel

**Saturday, October 19:**

*No Events*

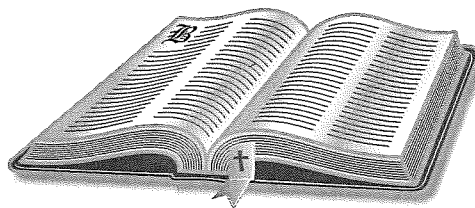
**Sunday, October 20:**

Young Catholic Families Mom's Group Book

Club, 7-8 pm – Faith Formation Office

**SCRIPTURE READINGS**

WEEK OF OCTOBER 14-20, 2019

**Monday, October 14:**

ROM 1:1-7 / LK 11:29-32

**Tuesday, October 15:**

ROM 1:16-25 / LK 11:37-41

**Wednesday, October 16:**

ROM 2:1-11 / LK 11:42-46

**Thursday, October 17:**

ROM 3:21-30 / LK 11:47-54

**Friday, October 18:**

2 TM 4:10-17B / LK 10:1-9

**Saturday, October 19:**

ROM 4:13, 16-18 / LK 12:8-12

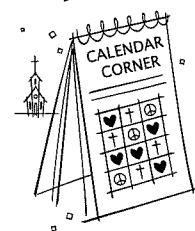
**Sunday, October 20:**

EX 17:8-13 / 2 TM 3:14-4:2 / LK 18:1-8

**CHURCH OF ST. WENCESLAUS  
CALENDAR CORNER**

Thank you to the Following Sponsors:

**Tupy Insurance Agency, Inc.,  
Scheffler Electric Inc.  
& Lakeside Supper Club**

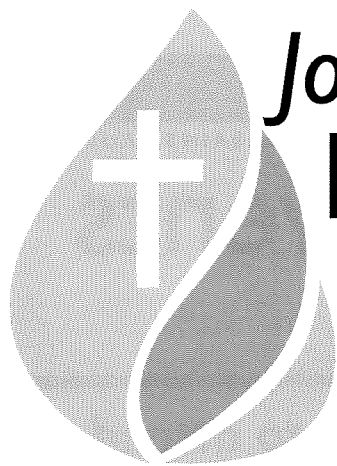
**Date:**

Oct. 9, 2019

**Winner:**

Todd & Barbara  
Ulschmid





# Join in a Prayer & Listening Event

*For the Archdiocesan Synod*

## Why should I go?



You know **what's working** and **what needs work** in your parish and this Archdiocese. This is your opportunity to help shape the future of our local Church.

## What's this for?



**Archbishop Bernard Hebda is seeking your feedback** to help discern and establish focus areas for the Archdiocese. He plans to attend all 20 events.

## What will happen?



We will **pray together** for the Synod and our Archdiocese. We will **discuss** what's working as well as our challenges and opportunities.

## Where and When?



There are 20 Prayer and Listening Event options throughout the Archdiocese – **choose one** that works for you! Find a full list on the back, and at [archspm.org/synod](http://archspm.org/synod).

## What do I do?



**Just show up.** All are welcome! The Church needs your voice. See you there!

SYNOD 2021



ARCHDIOCESE OF SAINT PAUL & MINNEAPOLIS





# Prayer & Listening Events

## Locations and Dates

~ Please choose one of the following events to attend ~

### SEPTEMBER

Tuesday, Sept. 24, 6-9 p.m.  
St. Victoria, Victoria

Saturday, Sept. 28, 9 a.m.-noon  
St. Michael, St. Michael

### OCTOBER

Friday, Oct. 11, 6-9 p.m.  
Guardian Angels, Oakdale

Saturday, Oct. 12, 9 a.m.-noon  
Our Lady of Guadalupe, St. Paul  
*Bilingual (English & Spanish)*

Saturday, Oct. 26, 9 a.m.-noon  
St. Peter, Forest Lake

Tuesday, Oct. 29, 6-9 p.m.  
Divine Mercy, Faribault

### NOVEMBER

Thursday, Nov. 7, 6-9 p.m.  
St. Wenceslaus, New Prague

Friday, Nov. 15, 6-9 p.m.  
All Saints, Lakeville

Sunday, Nov. 17, 1-4 p.m.  
St. Anne-St. Joseph Hien, Mpls.  
*Bilingual (English & Vietnamese)*

### JANUARY

Sunday, Jan. 5, 1-4 p.m.  
Holy Cross, Minneapolis  
*ASL interpreted*

Saturday, Jan. 25, 9 a.m.-noon  
St. Peter Claver, St. Paul

Tuesday, Jan. 28, 6-9 p.m.  
Pax Christi, Eden Prairie

### FEBRUARY

Saturday, Feb. 1, 9 a.m.-noon  
St. Stephen, Minneapolis  
*Bilingual (English & Spanish)*

Tuesday, Feb. 11, 6-9 p.m.  
Providence Academy, Plymouth

Saturday, Feb. 15, 9 a.m.-noon  
Lumen Christi, St. Paul

Tuesday, Feb. 18, 6-9 p.m.  
St. Stephen, Anoka

Thursday, Feb. 27, 6-9 p.m.  
Our Lady of Grace, Edina

Saturday, Feb. 29, 9 a.m.-noon  
St. Pius V, Cannon Falls

### MARCH

Saturday, Mar. 7, 9 a.m.-noon  
Transfiguration, Oakdale

Saturday, Mar. 14, 9 a.m.-noon  
St. Alphonsus, Brooklyn Center  
*Bilingual (English & Spanish)*

<b>Patty's Place</b> • Specialty Coffees • Fresh Pastries • Hand Dipped Ice Cream • Cake Decorating 108 E Main Street #1 New Prague 952-758-5808 Open 7 Days A Week	 <b>NPCL</b> (New Prague-Caska-Louisville) <b>Mutual Insurance Company</b> 205 10th Ave. NE New Prague, MN 56071 <b>952-758-5964</b> www.npclinsurance.com Competitive Rates for Farm & Home <b>Since 1882</b>	 <b>SKLUZACEK</b> Cabinetry & Woodworking Dave Skluzacek • 612-986-8443 New Prague, MN	 <b>First Bank &amp; Trust</b> 1101 1st Street SE, New Prague • 952-758-4491 BANKeasy.com MEMBER FDIC
 <b>NEW PRAGUE FAMILY &amp; SPORTS CHIROPRACTIC CENTER</b> Dr. Mike Kilpatrick 952-758-4121	 <b>MAIN ST. DENTAL</b> Jon P. Colling, D.D.S. Ruth Peterka, D.D.S. GENERAL DENTISTRY Thomas W. Smyth, D.D.S. newpraguedentist.com OFFICE HOURS MON-FRI 211 10th Ave. NE New Prague 952-758-2376	 <b>Scott &amp; Jenny Smisek</b> Mechanical Inc. New Prague, MN 952-758-2986 scott@sjsmechanicalinc.com	<b>COMMITMENT TO GETTING RESULTS.</b>  <b>WORNSON GOGGINS</b> Attorneys   Advisors   Advocates 119 E. MAIN ST., NEW PRAGUE <b>952-758-4161</b> WWW.LAWYERSNP.COM
<b>Bruzek FUNERAL HOME</b> Serving With Compassion Since 1903 Steve and Mary Frost Cremation & Funeral Planning 952-758-4949	 <b>MAIN ST. DENTAL</b> Jon P. Colling, D.D.S. Ruth Peterka, D.D.S. GENERAL DENTISTRY Thomas W. Smyth, D.D.S. newpraguedentist.com OFFICE HOURS MON-FRI 211 10th Ave. NE New Prague 952-758-2376	<b>Edina Realty.</b>  <b>Pat Sullivan</b> REALTOR 952.457.0479 patsullivan@edinarealty.com www.edinarealty.com/pat-sullivan-realtor	<b>MARQUARDT JEWELERS</b>  New Prague
 <b>Parkview Medical Clinic</b> Daniel R. Berg, MD Michael P. O'Rourke, MD Jean Craig, MD Heather Hamernick, MD New Patients Welcome Same Day Appointments Available Saturday Morning Appointments www.parkviewclinic.com <b>952-758-2535</b>	 <b>NEW PRAGUE AUTO REPAIR</b> www.NewPragueAutoRepair.com Since 1974 Gary Kohoutek, Owner 952-758-4471 205 4th Ave. SW New Prague, MN 56071	 <b>KUBES Furniture &amp; Flooring</b> 133 Main Street West New Prague, MN 56071 <b>952-758-4588</b> www.kubeshomefurnitureflooring.com Mon-Wed. 9-5, Thur. 9-7, Fri. 9-5, Sat. 9-3	<b>This Space Available Call</b> <b>952-758-4435</b>
<b>Ambroz Plumbing, Inc.</b> Paul Ambroz New Construction - Remodel - Service <b>952-758-6265 • Cell 952-292-4413</b> Lic# 059407-PM	<b>TUPY INSURANCE AGENCY, INC.</b> For Your Personal or Business Insurance Needs We are here to Serve You! 111 East Main Street New Prague, MN <b>952-758-2433</b>	 <b>Knights of Columbus Council #2023</b> K.C. Hall in New Prague Weddings, Receptions, Anniversaries, Card Tournaments, Birthday Parties Call Larry at 952-873-6369 or K.C. Hall at 952-758-3656 Bingo (License Permit # 01187) October-April Come and have fun! 411 - 4th Ave. SW 3rd Degree Grand Knight Luverne Malecha 651-387-8048 4th Degree Faithful Navigator John Wiskocil 612-581-7210 Ladies Aux. Meetings 4th Monday, 7 pm Contact Rosella Kes 952-758-3578 Insurance Agent Dave Goedtkne 507-720-1652	 <b>STEFENI TUPY</b> REALTOR 952-486-3082 www.StefiTupy.com <b>Edina Realty.</b> StefeniTupy@EdinaRealty.com
 <b>MACH LUMBER</b> Paul Kratochvil, Owner Convenient - We Deliver! <b>952-758-3235</b> M-F 7-5; Sat. 8-Noon 201 Second Ave. SW, New Prague 1 block S of Main St, across from ConAgra	<b>TUPY INSURANCE AGENCY, INC.</b> For Your Personal or Business Insurance Needs We are here to Serve You! 111 East Main Street New Prague, MN <b>952-758-2433</b>	 <b>YOU CALL... WE HAUL...</b> Complete Household Transfer Licensed • Bonded Reasonable Rates TIM or JOHN 952-758-2552 16264 310 St. New Prague	 <b>Marlene Mushitz,</b> CRS, GRI, CDPE 1301 1st St. NE New Prague <b>612-978-2222</b> www.DynamicMarlene.com
 <b>Odenthal Landscaping</b> Retaining Walls, Patios & Much More For All Your Landscaping Needs New Prague, MN www.odenthallandscaping.com Phone & Fax: 507-364-5460 Cell: 612-703-4803	 <b>KUBES REALTY</b> <b>5% Commission Full Service</b> Since 1988 KubesRealty.com	 <b>NEW PRAGUE VETERINARY CLINIC</b> Dr. William F. Vollmar Dr. Katie Vollmar Boarding Services 1003 East Main St. New Prague, MN <b>952-758-2881</b>	 <b>AMERICAN FAMILY INSURANCE</b> Melissa Kreuser, Agent Bus: (952) 758-5460 1301 1st St NE, New Prague
<b>DOUG VAYDA</b> Specialist in the practice of Orthodontics 101 Central Ave. New Prague 952-758-6999	 <b>MALA STRANA REHABILITATION CENTER</b> & Assisted Living New Prague • 952-758-2511	<b>Suel Printing Company</b> Pleased to be the printers of your Parish Bulletin. 200 Main St. East, New Prague 952-758-4435 awann@suelprinting.com	<b>SKLUZACEK CONSTRUCTION, INC.</b> Steve Skluzacek, Owner #0004897 <b>952-758-4158</b>
<b>Positively Impacting Peoples' Lives Since 1881</b>  <b>Roundbank</b> New Prague: 952-758-BANK (2265) • Farmington: 651-463-8300 www.roundbank.com Member FDIC EQUAL HOUSING LENDER			
<b>952.758.2879</b> <b>Ron Schoenecker</b> Your Local Agent 105 Main St W New Prague, MN 56071 rschoenecker@farmersagent.com 	 <b>Michael Traxler</b> <b>WEALTH MANAGEMENT, LLC</b> Investments & Financial Planning Solutions Securities & Advisory Services offered through Michael Traxler Wealth Management, LLC a Registered Investment Advisor in the State of Minnesota. <b>Michael P. Traxler</b> Financial Advisor 222 Main Street East New Prague, MN 56071 <b>952-758-8060</b>		