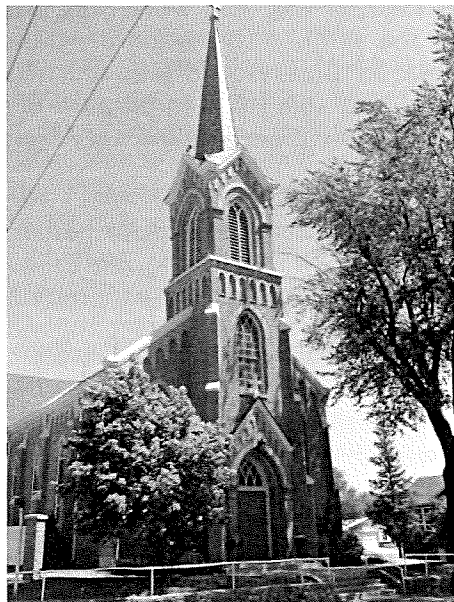


**6TH SUNDAY IN ORDINARY TIME**

**FEBRUARY 16, 2020**

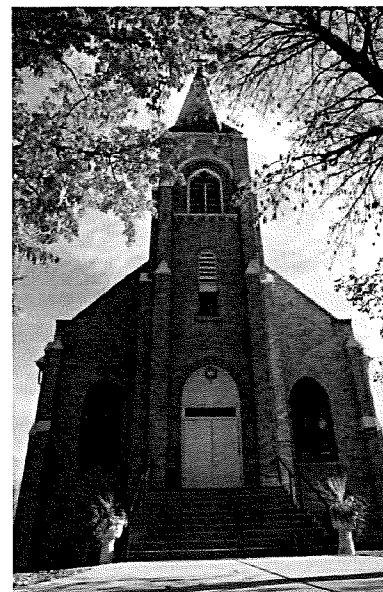
## **To Renew All Things in Christ**



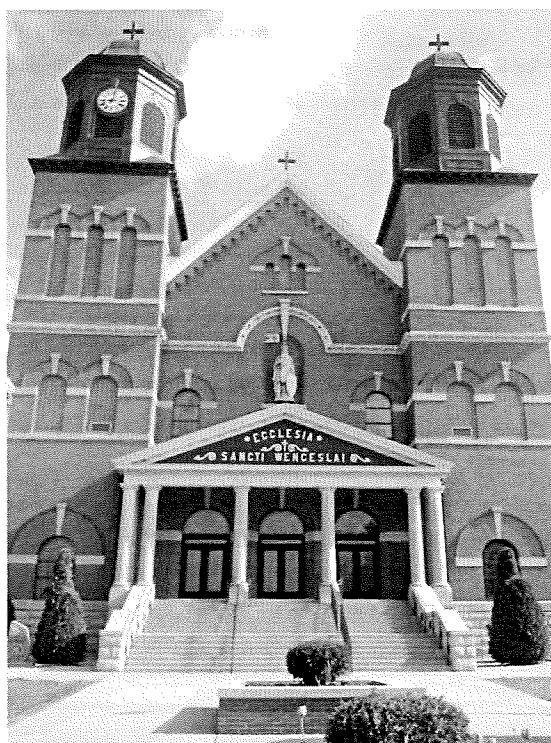
**St. John the Evangelist**

### **Parish Mission Statement**

*We are a Catholic  
community forming  
disciples of Jesus Christ  
dedicated to loving God  
through our worship,  
sharing the Good News,  
and loving service to  
others.*



**St. Scholastica**



**St. Wenceslaus**

## **NEW PRAGUE AREA CATHOLIC COMMUNITY** *Three Sites of Worship, One Community of Faith*

**Including St. Wenceslaus &  
The Western Catholic Community of St. John the Evangelist and St. Scholastica**

215 MAIN STREET EAST ■ NEW PRAGUE, MN 56071 ■ 952-758-3225 ■ NPCATHOLIC.ORG

**We welcome you...**

Welcome to the greater New Prague Area Catholic Community which includes the Church of St. Wenceslaus and the Western Catholic Community of St. John the Evangelist and St. Scholastica. We are happy you are here. Should you be visiting just for today, WELCOME! If you are seeking a church home, we would be honored to have you consider joining our faith community. If you are interested in a membership, please phone the parish office for assistance and registration. If you are over the age of 21, we ask that you register. Please feel free to stop by the parish office during office hours to register or you may do so online. Again, we are happy you are here.

**At the Church of St. Wenceslaus****PARISH OFFICE HOURS**

Monday – Friday 8:30 am to 4:00 pm

**MASS SCHEDULE****Weekend Masses**

Saturday..... 4:00 pm

Sunday..... 8:30 & 10:30 am

**Morning Word & Communion**

Monday..... 8:00 am

**Weekday Masses**

Tuesday-Friday..... 8:00 am

**SACRAMENTS & OTHER INFORMATION****Anointing of the Sick**

Available to those who are seriously ill or suffering from a prolonged illness. Call 952-758-3225

**Confirmation**

Preparation required. Call 952-758-0477

**Reconciliation**

Saturdays at 3 pm in the church.

**Baptism**

Preparation required. Call 952-758-3225

**Marriage**

Six months to one year preparation time required. Call 952-758-3225

**Rosary**

Monday – Friday 7:30 am & Saturday 8:00 am in the church.

**Fatima Prayer Cell**

Monday – Wednesday in the SW Daily Chapel after 8 am service.

**Adoration**

Friday 9:00 am to midnight in the SW Daily Chapel.

**Early Morning Scripture Study**

Wednesday 7:00 to 8:00 am in Pius X Room in church basement.

**Prayer Chain**

Judy: 952-758-2220 or Arnita: 952-758-4943

**BeFrienders**

Ann Schoenbauer: 952-758-3456 or

Lois Giesen: 952-758-2138

**From the Desk of Father Eugene Theisen****Padre's Pen –  
Lent and the 99**

I want to give a shout out to our Faith Formation staff for the hard work they put in to promote and implement the spiritual formation program "The 99." They ran several Master Classes and just finished up a 3-day mini parish retreat. I was able to sit in on portions of the program and found it to be enlightening and very well done.

This program will be an on-going opportunity for our parish. There will be a Lenten opportunity with this program called "The 99 Handbook." It will be made available to the parish for a recommended donation of \$10 to cover our cost. I recommend this to you as part of your Lenten disciplines.

That means that Lent is just around the corner. It is only a week and half away. Now is the time for all of us to start thinking about how we can prepare ourselves for the Resurrection celebration of Easter. The goal of all our Lenten disciplines of prayer, fasting, and almsgiving is to draw us closer to Christ.

Prayer is intimate communication with our God. We not only speak, but we listen. One of the many opportunities available to us is the devotion of the Stations of the Cross. We verbally/orally pray aloud while interiorly meditating on the mystery of salvation revealed to us in each station.

Fasting is willingly depriving ourselves of some good with the expressed intention of having God fill that empty spot in our lives. So, we may for example give up sweets or eating between meals so we can be reminded that we can only be filled completely with the sweetness of God's love for us in Christ Jesus.

And we give alms. We stand in support of those who are less fortunate than ourselves. And by providing for their needs, we are reminded that all the good gifts in our lives have been provided by a God who loves us.

I recommend that every adult take upon themselves at least one discipline in each of the areas of Prayer, Fasting, and Almsgiving.

Ad Christum per Mariam (To Christ through Mary),

Fr. Theisen

Parish Debt Last Month	Parish Debt This Month
\$462,654	\$452,706

## Western Catholic Community

### St. John & St. Scholastica

#### Padre's Cheezy Potatoes, Sausage, Pancakes BREAKFAST Bake Sale and Quilt Raffle

Incredible "Padre's Cheezy Potatoes" have earned a spot on the menu along with Sausage and Pancakes at upcoming St. John/St. Scholastica Breakfast. Add to that a huge variety at a Bake Sale plus a Quilt Raffle. Sun., March 1st, 8 am-1 pm, at the Knights of Columbus Hall in New Prague. Cost- Free Will Donation. The cheesy potatoes are named after Father Eugene Theisen. As a military Chaplain, soldiers called him "Padre". On several occasions, we, in the West, included them in a meal and Father Theisen loves them. We have added Padre's Cheezy Potatoes to the breakfast menu for you to enjoy too. Come, take off your shoes, stay a while.



#### Our Lady of Good Help CCW News Update

The youngest member of our Council of Catholic Women, 8-year-old Eva Huebl, along with her sister, Brittany, delighted a large gathering at the February CCW meeting. The sisters sang a song in the Polish language, a Marian hymn that has become like the second national anthem for Poland, which was a favorite of Saint Pope John Paul II. Eva then led us in a service project, making valentines for veterans. Thank you, Eva and Brittany!

#### Spaghetti Dinner

Our gratitude is overwhelming for all those who joined us to support the Catholic United Financial Matching Grant Spaghetti Dinner! Thank you to those that came to eat, to the over 30 volunteers that assisted with the event, and for those that couldn't make it, yet sent in support! This great community joined together to help raise nearly \$3,500 for our Catholic education efforts. Thank you!

#### Mass Schedule Volunteers - St. John & St. Scholastica

February 22 & 23, 2020	Saturday St. John 8:15 PM	Sunday St. Scholastica 8:00 AM	Sunday St. John 10:00 AM
<b>Lector</b>	Carol Weiers	Karen Odenthal	Jim Widmer
<b>Eucharistic Ministers</b>	Sandy Kubes	Cindy Jirak, Judy Pauly & Kevin Odenthal	Angela Sticha, Jill Holden & Jonila Weiers
<b>Servers</b>	Mitchel Pomije & Leo Pexa	Leo Pexa & Matthew Schoenecker	Brenna, Samantha & Brooke Solheid, Abby Bissell
<b>Gift Bearer Family</b>		Joe Prchal Family	Nate Sticha Family

### Important Information

#### Weekend Masses

Saturday.....	8:15 pm	St. John
Sunday.....	8:00 am	St. Scholastica
Sunday.....	10:00 am	St. John

#### SACRAMENTS & OTHER INFORMATION

#### Reconciliation

Saturday.....	7:15 pm	St. John
---------------	---------	----------

#### Baptism & Confirmation

Preparation required. Call the Parish Office at 952-758-3225.

#### Anointing of the Sick

Call the Parish Office at 952-758-3225.

#### Marriage

Prep required. Call Fr. Eugene Theisen.

#### Adoration

Fridays 9:00 am to midnight at St. Wenceslaus Daily Chapel

#### WESTERN CATHOLIC COMMUNITY OFFICE

20087 Hub Drive, New Prague 56071  
952-758-4642

#### Rev. Eugene Theisen

#### Parochial Administrator

952-758-0469  
Eugene.Theisen@npcatholic.org

#### Hall Rental:

**Pamela Sherlock** 952-758-0477 or email:  
pamela.sherlock@npcatholic.org

#### Prayer Chain WCC:

<b>Carol Bauer</b>	952-457-4057
<b>Noreen Giesen</b>	952-758-2608
<b>Marlene Dohmen</b>	952-492-6879

#### COLLECTION INFORMATION

#### WESTERN CATHOLIC COMMUNITY SUNDAY, FEBRUARY 9, 2020

<b>Total Collected 2/9/20 .....</b>	<b>\$1,281</b>
Under Budget for the Week .....	-\$1,873
Actual Collections YTD.....	\$94,434
Under Budget YTD .....	-\$6,483
Budget for Next Week .....	\$3,154

*Thank you for your support!*

Bulletin E-mail: [info@npcatholic.org](mailto:info@npcatholic.org)

Website: <http://www.npcatholic.org>

## PARISH AND AREA NEWS

### Who will be asked to participate in a campaign?

All registered parishioners from each site will be sent the same information and most importantly every household will be asked to participate through giving and volunteering. "Not equal gifts, but equal sacrifice," is the philosophy that best describes this effort. Not everyone can make the same size gift, but everyone has an ability to make a sacrificial commitment.

Please pray for God's guidance throughout this process as well as the campaign volunteers and entire New Prague Area Catholic Community. This is an important moment in our parish's history and we thank you for your interest! For more information, visit our website at [www.npcatholic.org](http://www.npcatholic.org) and click on Capital Campaign at the top of the page in the navigation bar.



### www.DiscipleMakerIndex.com

Let your voice be heard. Each household should have received a survey via email forwarded to you from Archbishop Hebda. Please share this with every member in your household; all are encouraged to fill it out. If you didn't receive an email, that means we do not have a current email address on file for you. Please notify the parish office to update your records. You can also access the survey on our website [npcatholic.org](http://npcatholic.org). There are paper copies available in the back of church at all three sites. Please take time to fill it out. Thank you!

### Lenten Small Groups

We will be using The 99 Handbook for our Lenten groups this year. Signup will be offered at weekend Masses this weekend and online. For more information, email or call Mary Higgins (952-240-1604) or Laura Schoenecker (952-758-5131). The Handbook is an invitation to examine our life of faith, beginning where we are right now. How do we live a fulfilling life within the flock of Jesus, the Good Shepherd? What does it mean to follow Jesus?

### SOUP SUPPER IS TOMORROW!

Monday evening, Feb. 17th, 4:30-7:00 pm. Casual family event. Three soups, (chicken noodle, vegetable beef, chili), breads and desserts. Served in the church dining area.



### Family Valentine's BINGO

Sun., Feb. 16th 1-3 pm, Parish Activities Center gym doors open at 12:45 pm. Bring the whole family for an

affordable afternoon of fun! Prizes for adults & kids. Everyone is welcome! Lunch counter food available for sale.

### Area Separated & Divorce Support Group

will meet Tues., Feb. 18th, 7-8:30 pm, in the John XXIII Room of the St. Wenceslaus Parish Activities Center; enter through the gym door from the church parking lot. If you or a loved one is experiencing the loss of a long-term relationship, married or unmarried, you may desire to connect with this group since they understand what you are going through at this time in your life. Questions? Please call Deacon Bob Wagner 612-703-0808 or Mary Pieper 952-873-6781.

### Women's Connection

Please join other Christian women of our area at the Women's Connection monthly potluck on Tues., Feb. 18th at 6:30 pm at the Well Youth Center, 1407 Main S. E in New Prague. Deb Bodensteiner will talk about "Ending Hopelessness Among Teens." She will also give an overview of The Well (check out their website), their plans for expansion, and the mission and offerings of Treehouse Youth Services available at the Well. If you have a teen or preteen, you will not want to miss this gathering. Call Mary Lynn (952-486-2311) if you have questions or want to ride together.

### Pizza with Padre:

Thurs., Feb. 20th at 6 pm in the Parish Activities Center. Skip the cooking and dishes for one night and join Father Eugene for a pizza party! This is a free event! RSVP to Erica at [elhavlicek@gmail.com](mailto:elhavlicek@gmail.com) or 952-212-2159 by Feb. 19th. All are welcome.

### Dear Edwina Jr.!

Come and see Saint Wenceslaus School's annual show, Dear Edwina Jr.! This heart-warming musical is about the adventures of Edwina Spoonapple, a neighborhood advice-giver extraordinaire! Through catchy songs, Edwina and her friends share wisdom about everything from trying new foods to making new friends. Join us for Edwina's "Advice-a-Palooza" show! St. Wenceslaus School PAC, Feb. 27th at 6 pm and Feb. 28th at 5:30 and 7:30.



### Calling all couples...

make a date with your sweetheart and join us on Sat., Feb. 29th at 9:15 am in the Parish Activities Center. Married couple Brian and Mary Lubinski will be speaking on

### SUPPORT OUR PATRONS

who make this bulletin possible by their advertising.

**DOUG VAYDA - ORTHODONTIST**

how to strengthen our relationship with the Lord through marriage. Free event, light breakfast provided. Childcare available. RSVP to Erica at elhavlicek@gmail.com or 952-212-2159 by Feb. 24th.

**Attention all Parishioners that have NOT yet attended a SYNOD Prayer & Listening Session**, here is your opportunity to get to one easily! On Sat., Feb. 29th, from 9am-noon there will be a listening session at St. Pius V in Cannon Falls. The Catholic Church in Jordan has arranged bus transportation to this Listening session, and they are willing to stop at St. Wenceslaus parking lot to pick up anyone who would like to attend. If you are interested in riding the bus, call Diane Trettel at 758-5688 to get signed up and learn more details. There is a free will offering (suggested \$5) to help with the cost of the bus.

### GriefShare Support Group

GriefShare is a special weekly support group with facilitated small group discussion, designed to give encouragement and to help you rebuild your life. It is a revolving 13-week program which you are welcome to start at any time. The support group is open to the whole New Prague area and surrounding communities.

**New groups begin:** Mondays, 6-7:30 pm, March 2nd-June 1st at the New Prague Library (Large Meeting Room) Wednesdays, 9-10:30 am, Feb. 5th-April 29th at Praha Village in New Prague (Community Room)

For more information or to register call MaryCarol or Ruth at St. Wenceslaus Church 952-758-3225. Email: MaryCarol.Wolf@npcatholic.org



## Serve the Poor Support Life Strengthen the Faith

Each year, the Catholic Services Appeal funds 20 Designated Ministries including:

- Providing over 50,000 people with clothing and medical supplies, including orphans and the elderly in Venezuela.
- Serving over 100,000 local Catholics through hospital chaplains.
- Evangelizing thousands, from youth through senior citizens, including those in prison.

Contributions go directly to the Designated Ministries. To learn more, go to [www.csafspm.org](http://www.csafspm.org). Thank you for your prayerful support!

### ~ COLLECTION INFORMATION ~ St. Wenceslaus Site SUNDAY, FEBRUARY 9, 2020

<b>Total for 2/9/20</b> .....	\$7,026
Under Challenge for Week .....	-\$7,353
Actual Collections YTD .....	\$486,263
Under Challenge YTD .....	-\$42,410
Challenge for Next Week .....	\$14,379

### Roman Barten Memorial Benefit Breakfast

Please save the date for the 13th Annual Roman Barten Memorial Benefit Breakfast on Sun., Mar. 22nd from 8 am-1 pm at the New Prague KC Hall. This year, all proceeds go to the care of 8 year old Gage Hoy, son of Asher and Marissa Hoy of Lonsdale.

Doctors telling you that the cancer is back is not good news to anyone - especially for a happy, easy-going young boy. Gage Hoy is bravely fighting back. Diagnosed at age 3 1/2 with acute lymphoblastic leukemia, Gage underwent over 3 years of chemotherapy. However, ongoing blood tests confirmed the cancer has returned. Now intense chemo treatments mean lengthy hospital stays, requiring a parent with him around the clock, and will continue through 2021. On the bright side, Gage is a huge "Lego Guy" and is looking forward to water sports, karate, football, and hockey! He is a "laid-back but goofy" big brother to Harper, age 6. Both attend Tri-City United Elementary School.

### HOW CAN YOU HELP?

▪ **PRAY** for Gage, his family, and for the success of this breakfast. Consider joining this Novena to St. Peregrine to pray for Gage as a group: <https://www.praymorenovenas.com/st-peregrine-novena/205408/>

▪ **JOIN US** on Sun., Mar. 22nd from 8 am-1 pm at the New Prague KC Hall.

▪ **SPREAD THE WORD!** Tell as many people as possible about the breakfast and/or donation opportunities. Consider sharing on Facebook.

▪ **VOLUNTEER** your time or **DONATE** an item for the raffle by contacting Fran Barten.

▪ **MONETARY DONATIONS** are gratefully accepted. Donations can be sent to "Gage Hoy Benefit Account" at Frandsen Bank & Trust; PO Box 200, Lonsdale, MN 55046. All donations are anonymous.



## FAITH FORMATION AND YOUTH MINISTRY

### Make a Date with Your Sponsor!

Make a date with your sponsor to do something good and have fun while doing it. The following dates have been reserved at Feed My Starving Children in Chanhassen for 9-10:30 am.

February 22 - Join Code KGLPKM

February 29 - Join Code 1378K2

For more information or questions, contact Pamela in the Faith Formation Office at [pamela.sherlock@npcatholic.org](mailto:pamela.sherlock@npcatholic.org) or 952-758-0477.



## SCHOOL NEWS from SWS

### St. Wenceslaus School Tuition Transfer Grant

\$1,000 tuition transfer grant for the 2020-21 school year available to all transfer students enrolling in Grades 1-8. Please contact Kim Doyle at 952-758-3133 or [kim.doyle@swsaints.org](mailto:kim.doyle@swsaints.org) for details.



# St. Wenceslaus Soup Supper

## Annual Fundraiser

### Annual Soup Supper is Monday, February 17, 2020

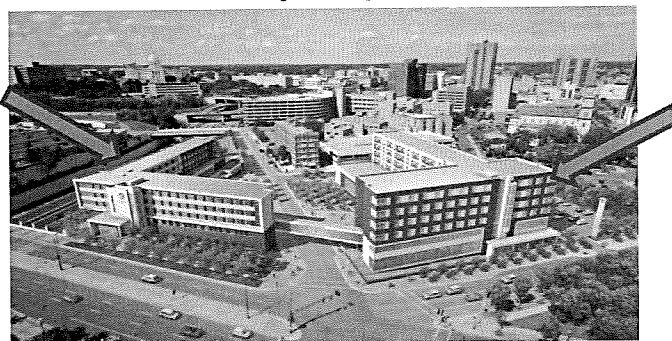
This weekend marks our parish's 26<sup>th</sup> annual Soup Supper Fundraiser. This annual happening funds our parish's support and monthly meals served at the St. Paul Opportunity Center (formerly known as Dorothy Day Center) in St. Paul. If you haven't been able to support it in the past, we hope you will consider supporting it this year by attending. The meal is served in the St. Wenceslaus Church Basement Dining Hall from 4:30pm to 7:00pm or until sold out. Chili, Vegetable Beef, and Chicken Noodle Soups along with fresh baked breads and desserts make this a fantastic meal for the entire family. Take outs are also available. Tickets will be sold at the door.

Cost: Free Will Offering.

Many thanks to the **First Catholic Slovak Lakes Association (FCSLA) Branch #W001**. FCSLA is a Catholic fraternal organization that will once again this year provide a \$600 matching grant. This donation greatly enhances the fiscal success of the Soup Supper Fundraiser.

### Dorothy Day Place

Higher Ground  
St. Paul



St. Paul Opportunity Center  
And  
Dorothy Day Residence

#### Higher Ground St. Paul - Opened January 2017

Pay-for-Stay Shelter for Men, where 60% of guests are working. This provides guests with the option to reserve a bunk with a locker. Permanent housing for formerly homeless individuals, including a medical respite wing, a wing for late stage alcoholic women, and preference veterans.

#### Total Number of units at Higher Ground Saint Paul: 473

- Men's Shelter - 172
- Women's Shelter - 60
- Late Stage Alcoholic Women's Program - 12
- Respite Care - 16
- Pay for Stay - 48
- Floors 3, 4, 5 (Single Room Occupancy) - 165

#### Saint Paul Opportunity Center and Dorothy Day Residence - Opened October 2019

In partnership with Ramsey County & several nonprofit organizations, the St. Paul Opportunity Center will provide:

- Job Training
- Physical and mental health clinics
- A Veterans Resource Hub
- Housing retention and placement

The Dorothy Day Residence will provide an additional 171 units of much needed affordable housing. There will be dedicated housing for young adults and a housing wing dedicated for veterans. Dorothy Day Place is the largest private partnership of its kind in MN. Dorothy Day Place is expected to serve an estimated 1,000 people each day.

**Interested in learning more or volunteering?**

Contact Norb Sticha 952.758.3888 or [norbsticha@gmail.com](mailto:norbsticha@gmail.com)

**LITURGIES & PRIEST'S MASS INTENTIONS**

INCLUDES ALL CHURCH LOCATIONS  
WEEK OF FEBRUARY 17-23, 2020

**Rosary at St. Wenceslaus**  
**MONDAY – FRIDAY at 7:30 am**  
**SATURDAY at 8:00 am**

**Monday, February 17**

8:00 am..... Word & Communion – SW

**Tuesday, February 18**

8:00 am..... Word & Communion – SW

**Wednesday, February 19**

8:00 am..... Fritz Hertaust† - SWS Mass – SW

**Thursday, February 20**

8:00 am..... Arnie Tupy† - Mass – SW

**Friday, February 21**

8:00 am..... Mass – SW

**Saturday, February 22**

3:00 pm..... Confession – SW

4:00 pm..... Judy C. & Frank & Anna Ruzicka†,

..... Ray & Dorothy Schoenecker†,

..... Alvin Pany† - Mass – SW

7:15 pm..... Confession – SJ

8:15 pm..... Mass – SJ

**Sunday, February 23**

8:00 am..... Mass for the People - Mass – SS

8:30 am..... Leonard Pexa† - Mass – SW

10:00 am..... Jayne Pint Palma† - Mass – SJ

10:30 am..... James Dohmen† - Mass – SW

**STAFF DIRECTORY** NEW PRAGUE AREA CATHOLIC COMMUNITY**Rev. Eugene Theisen**

Parochial Administrator

952-758-0469

Eugene.Theisen@npcatholic.org

**Peter Guzulaitis**

Parish Business Administrator

952-758-0465

Peter.Guzulaitis@npcatholic.org

**MaryCarol Wolf**

Pastoral Ministry Associate

952-758-0463

MaryCarol.Wolf@npcatholic.org

**Ruth Weinandt**

Parish Accountant &

Pastoral Ministry Associate

952-758-0466

Ruth.Weinandt@npcatholic.org

**Laura Schoenecker**

Faith Formation Director

Pre-K through Adult

952-758-5131

Laura.Schoenecker@npcatholic.org

**Pamela Sherlock**

Youth Ministry 6-8,

Confirmation Coordinator &

WCC Site Coordinator

952-758-0477

Pamela.Sherlock@npcatholic.org

**Emily Shimota**

Youth Ministry, Grades 6-12

952-758-0486

Emily.Shimota@npcatholic.org

**Mary Higgins**

Adult Faith Formation Associate

952-758-0464

Mary.Higgins@npcatholic.org

**Kim Doyle**

St. Wenceslaus School Principal

952-758-3133

Kim.Doyle@swsaints.org

**Sarah Gullickson**

Preschool Director

952-758-0480

Sarah.Gullickson@swsaints.org

**Debbie Gregor**

Director of Liturgical Music at SW

952-758-4207

Debbie.Gregor@npcatholic.org

**Lisa Levenson**

Parish Administrative Assistant

952-758-3225

Lisa.Leverson@npcatholic.org

**PARISH BUSINESS OFFICE**

215 Main St E, New Prague, MN 56071

PH 952-758-3225 FAX 952-758-2960

**FAITH FORMATION OFFICE**

On campus in Parish Activity Center

**ST. WENCESLAUS SCHOOL**

227 Main St E, New Prague, MN 56071

PH 952-758-3133 FAX 952-758-2958

**LITTLE SPIRITS PRESCHOOL**

On campus of SWS ~ 1950's building

952-758-0480

**MAINTENANCE DEPARTMENT**

952-758-2327

**MEETINGS & EVENTS CALENDAR**

WEEK OF FEBRUARY 17-23, 2020

**Monday, February 17:**

No School & Parish Office Closed

GriefShare Support Group, 6-7:30 pm – NP

Library

Soup Supper, 4:30-7 pm – SW Church Cafeteria

**Tuesday, February 18:**

Separated & Divorce Support Group, 6:45-8:30

pm - John XXIII Room, SW Parish Activities

Center

**Wednesday, February 19:**

Early Morning Scripture Study, 7-8 am – Pius X

Room, SW Church Basement

GriefShare Support Group, 9-10:30 am –

Praha Village

Disciples of Christ, 6:15-7:30 pm – SW Campus

**Thursday, February 20:**

Pizza with Padre, 6-7 pm –

SW Parish Activities Center

**Friday, February 21:**

Adoration, 9 am-midnight – SW Daily Chapel

**Saturday, February 22:**

Sponsor Date, 9:30 am-11 am – Feed My Starving

Children, Chanhassen

**Sunday, February 23:**

Children's Liturgy of the Word at 8:30 and

10:30 am Masses – SW Daily Chapel

Confirmation Class, 8:30-11:30 am –

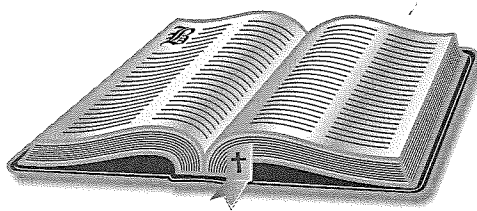
SW Campus Wide

Computer Survey Opportunity, 9:30am-12 pm

SW Church Basement

**SCRIPTURE READINGS**

WEEK OF FEBRUARY 17-23, 2020

**Monday, February 17:**

JAS 1:1-11 / MK 8:11-13

**Tuesday, February 18:**

JAS 1:12-18 / MK 8:14-21

**Wednesday, February 19:**

JAS 1:19-27 / MK 8:22-26

**Thursday, February 20:**

JAS 2:1-9 / MK 8:27-33

**Friday, February 21:**

JAS 2:14-24, 26 / MK 8:34-9:1

**Saturday, February 22:**

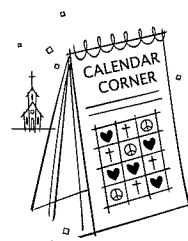
1 PT 5:1-4 / MT 16:13-19

**Sunday, February 23:**

LV 19:1-2, 17-18 / 1 COR 3:16-23 / MT 5:38-48

**CHURCH OF ST. WENCESLAUS  
CALENDAR CORNER**

Thank you to the Following Sponsors:  
**Ron Schoenecker Insurance Agency,**  
**Skruzacek Tree Movers, LLC &**  
**The Sullivan Group ~ Edina Realty**

**Date:**

Feb. 12, 2020

**Winner:**

Judy Siemon

**Date:**

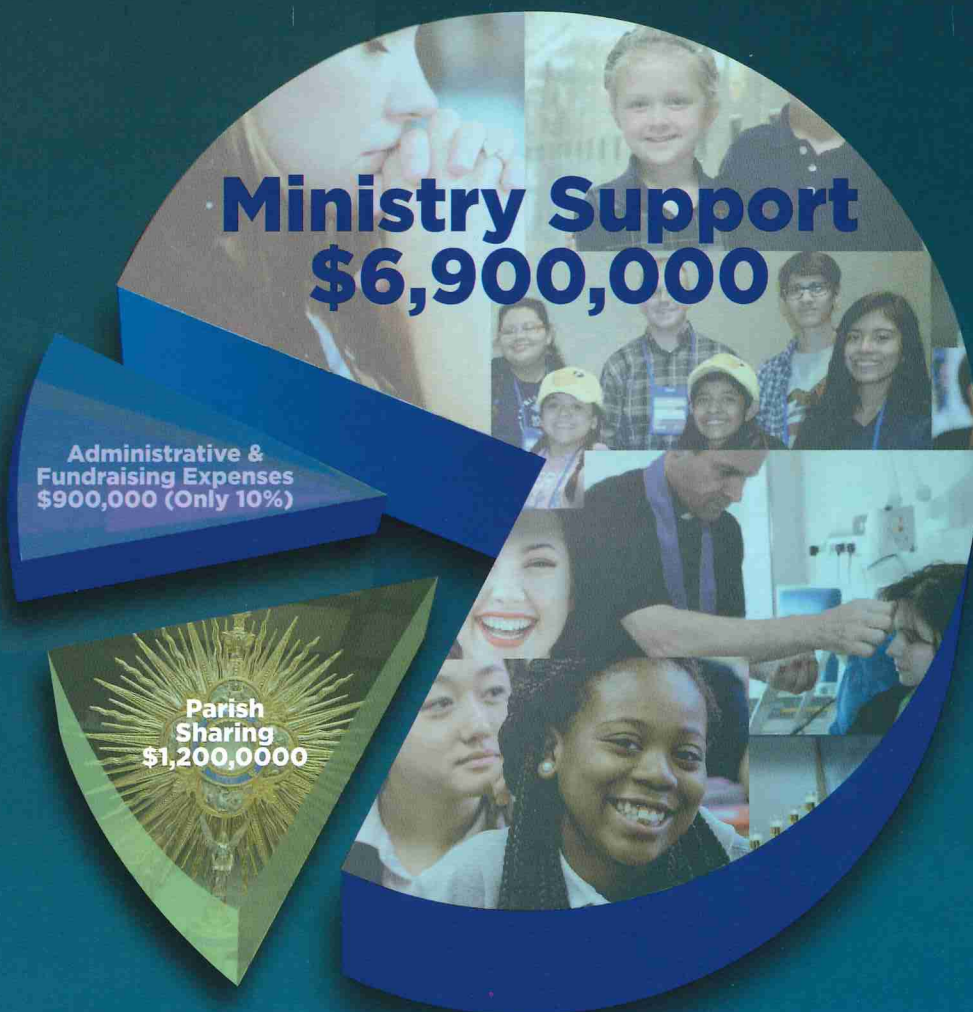
Feb. 14, 2020

**Winner:**

Curt & Kris Sticha



# Serve the Poor Support Life Strengthen the Faith



## 20 MINISTRIES serving over 175,000 recipients each year

- |   |                                   |                             |                                       |
|---|-----------------------------------|-----------------------------|---------------------------------------|
| 1 Abria Pregnancy Resources               | 6 Catholic Charities              | 11 High School Scholarships | 16 Rachel's Vineyard TwinCities       |
| 2 American Indian Ministry                | 7 Deaf Ministry                   | 12 Hospital Chaplains       | 17 St. Vincent de Paul Society        |
| 3 Archdiocesan Council of Catholic Women  | 8 Evangelization                  | 13 Latino Ministry          | 18 Seminarian Tuition, Room and Board |
| 4 Campus Ministry - Newman Center         | 9 Elementary School Funding       | 14 Marriage, Family & Life  | 19 Venezuelan Mission                 |
| 5 Campus Ministry - Saint Paul's Outreach | 10 Elementary School Scholarships | 15 Prison Ministry          | 20 Youth and Young Adult Ministry     |

To learn more about these 20 ministries and the work of the CSAF, go to **[www.csafspm.org](http://www.csafspm.org)**.



# Thank you for your generosity!

When you donate to the Catholic Services Appeal Foundation (CSAF), you provide:

-  Over 100,000 Catholics with hospital chaplains.
-  3.9 million pounds of food distributed through 31 local food pantries.
-  Over 7,500 nights of housing and emergency shelter.
-  Over \$2.5 million in student scholarships and funding, including support for every Catholic elementary school and 13 Catholic High Schools within the Archdiocese.
-  Healing retreats to over 550 people affected by abortion.
-  Over 1,300 women and families with pro-life support.
-  Tuition, room and board for over 50 men studying for the priesthood for our Archdiocese.

## What happens to the dollars I contribute?

Donated dollars come in and checks to the Designated Ministries go out - it is literally that simple! For every dollar you give, 90 cents benefit the ministries and parishes directly and just 10 cents go to administrative and fundraising costs combined (well below the national average). Just think of all the good that comes out of your dollar! Independent audit reports are available online at [www.csafspm.org](http://www.csafspm.org) (under "About", "Financial Reports").

## 3 Simple Ways to Give:

### In-pew

Fill in envelope and place in parish collection basket.

### Online

Go to **GiveCSAF.org**.  
Make a difference today!

### Postal Mail

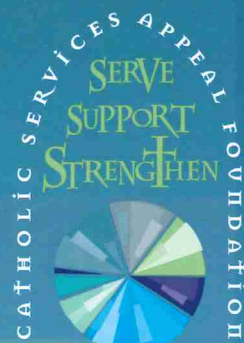
Mail your gift to:  
**The Catholic Services Appeal Foundation**  
12805 Highway 55, Suite 210  
Plymouth, MN 55441

We invite you to participate in the

**DEO GRATIAS**  
SOCIETY

A leadership giving society that furthers the CSAF mission through annual gifts of \$1,500 or more.

For more information, please contact:  
[information@csafspm.org](mailto:information@csafspm.org).



**Serve the Poor Support Life Strengthen the Faith 2020 CSAF**

12805 Highway 55, Suite 210 Plymouth, Minnesota 55441 612-294-6622 | [www.csafspm.org](http://www.csafspm.org)

<p><b>Patty's Place</b></p> <ul style="list-style-type: none"> <li>• Specialty Coffees</li> <li>• Fresh Pastries</li> <li>• Hand Dipped Ice Cream</li> <li>• Cake Decorating</li> </ul> <p>108 E Main Street #1 New Prague 952-758-5808 Open 7 Days A Week</p>	<p><b>NPCL</b> (New Prague-Caska-Louisville) <b>Mutual Insurance Company</b> 205 10th Ave. NE New Prague, MN 56071 <b>952-758-5964</b> www.npclinsurance.com Competitive Rates for Farm &amp; Home <b>Since 1882</b></p>	<p><b>SKLUZACEK</b> Cabinetry &amp; Woodworking Dave Skluzacek • 612-986-8443 New Prague, MN</p>	<p><b>First Bank &amp; Trust</b> 1101 1st Street SE, New Prague • 952-758-4491 BANKeasy.com MEMBER FDIC</p>
<p><b>NEW PRAGUE FAMILY &amp; SPORTS CHIROPRACTIC CENTER</b> Dr. Mike Kilpatrick 952-758-4121</p>	<p><b>Jon P. Colling, D.D.S.</b> <b>Ruth Peterka, D.D.S.</b> <b>Thomas W. Smyth, D.D.S.</b> newpraguedentist.com OFFICE HOURS MON-FRI 211 10th Ave. NE New Prague 952-758-2376</p>	<p><b>Scott &amp; Jenny Smisek</b> www.scott@sjsmmechanicalinc.com</p>	<p><b>WORNSON GOGGINS</b> ATTORNEYS   ADVISORS   ARBITRATORS 119 E. MAIN ST., NEW PRAGUE <b>952-758-4161</b> WWW.LAWYERSNP.COM</p>
<p><b>Bruzek FUNERAL HOME</b> Serving With Compassion Since 1903 Steve and Mary Frost Cremation &amp; Funeral Planning 952-758-4949</p>	<p><b>MAIN ST. DENTAL</b> Gary Kohoutek, Owner 952-758-4471 205 4th Ave. SW New Prague, MN 56071</p>	<p><b>KUBES Furniture &amp; Flooring</b> 133 Main Street West New Prague, MN 56071 <b>952-758-4588</b> www.kubeshomefurniture.com Mon-Wed. 9-5, Thur. 9-7, Fri. 9-5, Sat. 9-3</p>	<p><b>Edina Realty</b> <b>952-290-3440</b> www.edinarealty.com/the-sullivan-group</p>
<p><b>Parkview Medical Clinic</b> Daniel R. Berg, MD Michael P. O'Rourke, MD Jean Craig, MD Heather Hamernick, MD New Patients Welcome Same Day Appointments Available Saturday Morning Appointments www.parkviewclinic.com <b>952-758-2535</b></p>	<p><b>Wencel Kubes</b> New Prague 952-758-2262</p>	<p><b>South Suburban Oral Surgeons</b> <b>Dr. Mark T. Roszkowski</b> <b>Dr. Richard T. Pihlstrom</b> 115 1st Avenue SE, #110, New Prague, MN 952-758-2321</p>	<p><b>STEFENI TUPY REALTOR®</b> 952-486-3082 www.StefTupy.com Edina Realty StefeniTupy@EdinaRealty.com</p>
<p><b>Ambroz Plumbing, Inc.</b> Paul Ambroz New Construction - Remodel - Service <b>952-758-6265 • Cell 952-292-4413</b> Lic# 059407-PM</p>	<p><b>TUPY INSURANCE AGENCY, INC.</b> For Your Personal or Business Insurance Needs We are here to Serve You! 111 East Main Street New Prague, MN <b>952-758-2433</b></p>	<p><b>Knights of Columbus Council #2023</b> <b>K.C. Hall in New Prague</b> Weddings, Receptions, Anniversaries, Card Tournaments, Birthday Parties Call Tom Busch at 763-381-7916 or K.C. Hall at 952-758-3656</p>	<p><b>NEW PRAGUE MINI STORAGE, INC.</b> From 5x10 thru 10x40. Climate Controlled, Now Available. Easy access, 7 days a week, 24 hours a day www.NewPragueMiniStorage.com <b>952-758-7819</b></p>
<p><b>Paul Kratochvil, Owner</b> <b>MACH LUMBER</b> 952-758-3235 M-F 7-5; Sat. 8-Noon 201 Second Ave. SW, New Prague 1 block S of Main St, across from ConAgra</p>	<p><b>5% Commission Full Service</b> Since 1988 KubesRealty.com</p>	<p><b>YOU CALL... WE HAUL...</b> Complete Household Transfer Licensed • Bonded Reasonable Rates TIM or JOHN 952-758-2552 16264 310 St. New Prague</p>	<p><b>Marlene Mushitz, CRS, GRI, CDPE</b> 1301 1st St. NE New Prague <b>612-978-2222</b> www.DynamicMarlene.com</p>
<p><b>Odenthal Landscaping</b> Retaining Walls, Patios &amp; Much More For All Your Landscaping Needs New Prague, MN www.odenthallandscaping.com Phone &amp; Fax: 507-364-5460 Cell: 612-703-4803</p>	<p><b>AMERICAN FAMILY INSURANCE</b> Melissa Kreuser, Agent Bus: (952) 758-5480 1301 1st St NE, New Prague</p>	<p><b>PHILLIP M. SCHEIBER, FICF</b> <b>President,</b> <b>Scheiber &amp; Associates Financial</b> www.srins.com • (952) 921-5842</p>	<p><b>SAXE CHEVROLET BUICK</b> 909 Enterprise Drive Belle Plaine, MN 56011 <b>952-873-2234</b> www.saxechevy.com</p>
<p><b>DOUG VAYDA</b> Specialist in the practice of Orthodontics 101 Central Ave. New Prague 952-758-6999</p>	<p><b>MA LA STRANA REHABILITATION CENTER</b> &amp; Assisted Living New Prague • 952-758-2511</p>	<p><b>SKLUZACEK CONSTRUCTION, INC.</b> Steve Skluzacek, Owner #0004897 <b>952-758-4158</b></p>	<p><b>New Prague Dental Center</b> "Dental care for the entire family" Jeremy Derksen, D.D.S. Kathleen J. Garry, D.D.S. <b>952-758-4741</b></p>
<p><b>Positively Impacting Peoples' Lives Since 1881</b></p> <div> <div> <p><b>Roundbank</b> New Prague: 952-758-BANK (2265) • Farmington: 651-463-8300 www.roundbank.com</p> </div> <div> <p>Member FDIC EQUAL HOUSING LENDER</p> </div> <div> <p><b>40th Anniversary</b> 1977-2017 We may be smaller...but we try harder</p> </div> <div> <p><b>my APPLIANCE SOURCE</b> SALES • SERVICE</p> </div> </div>			
<p><b>952.758.2879</b> <b>Ron Schoenecker</b> Your Local Agent 105 Main St W New Prague, MN 56071 rschoenecker@farmersagent.com</p>	<p><b>Michael Traxler</b> WEALTH MANAGEMENT, LLC Investments &amp; Financial Planning Solutions Securities &amp; Advisory Services offered through Michael Traxler Wealth Management, LLC a Registered Investment Advisor in the State of Minnesota.</p>		