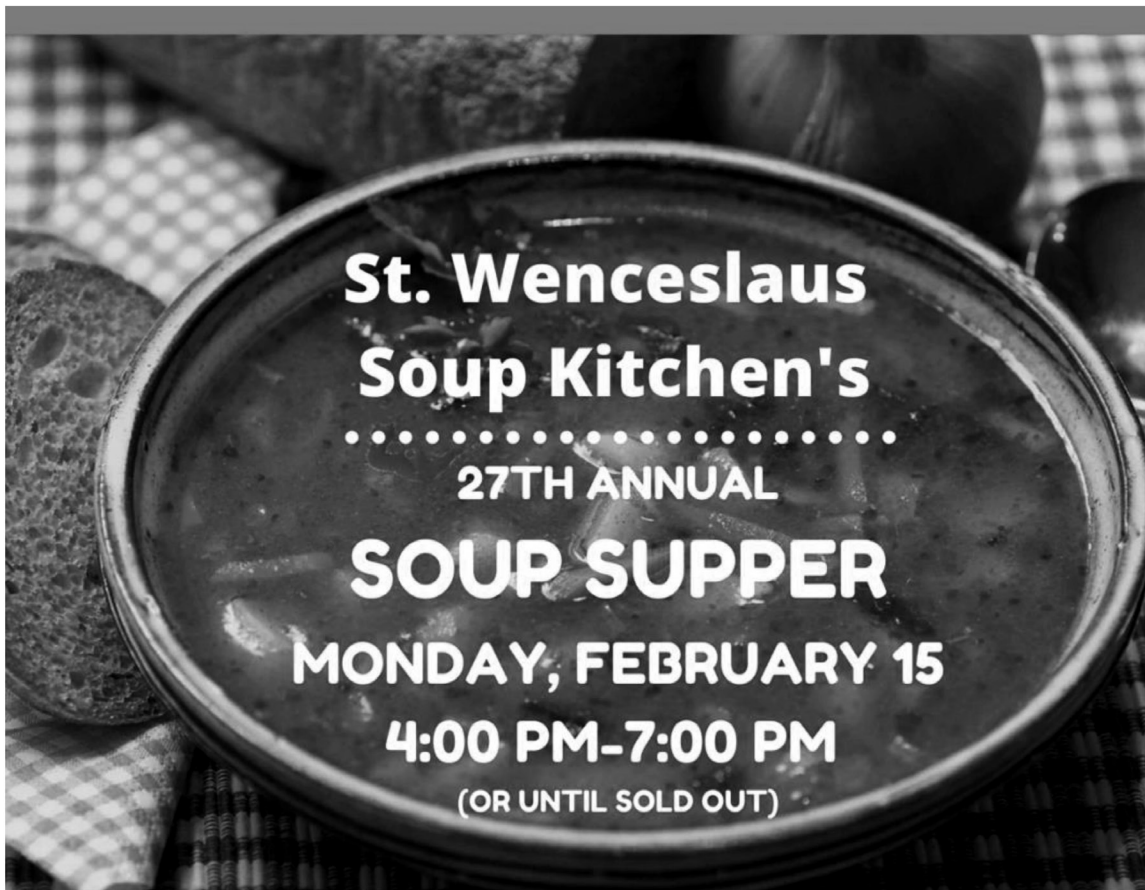


# FIFTH SUNDAY IN ORDINARY TIME

February 7, 2021



## Menu\*

Chili  
Vegetable Beef Soup  
Chicken Noodle Soup

\*packaged in 1 quart containers

- Curbside Pickup
- West side of PAC
- Cost: Free Will Offering

*FCSLA matching \$600 grant*

*Because of the pandemic, this year's proceeds benefit  
St. Wenceslaus Catholic Parish & School  
for more information call Norb at 952.758.3888*

## SAINT WENCESLAUS CATHOLIC PARISH

*Three Sites of Worship ~ One Community of Faith*

Including St. Wenceslaus, St. John the Evangelist and St. Scholastica

215 MAIN STREET EAST ■ NEW PRAGUE, MN 56071 ■ 952-758-3225 ■ NPCATHOLIC.ORG

**We welcome you...**

Welcome to the greater New Prague Area Catholic Community which includes the Church of St. Wenceslaus and the Western Catholic Community of St. John the Evangelist and St. Scholastica. We are happy you are here. Should you be visiting just for today, WELCOME! If you are seeking a church home, we would be honored to have you consider joining our faith community. If you are interested in a membership, please phone the parish office for assistance and registration. If you are over the age of 21, we ask that you register. Please feel free to stop by the parish office during office hours to register or you may do so online. Again, we are happy you are here.

**At the Church of St. Wenceslaus****PARISH OFFICE HOURS**

Monday – Friday ~ 8:30 am to 4:00 pm

**MASS SCHEDULE****Weekend Masses**

Saturday..... 4:00 pm

Sunday..... 8:30 & 10:30 am

**Rosary Only**

Monday..... 7:30 am

**Weekday Masses**

Tuesday-Friday..... 8:00 am

If you are homebound or ill, *the previous weekend's Mass may be viewed on our website ~ [npcatholic.org](http://npcatholic.org)*

**SACRAMENTS & OTHER INFORMATION****Anointing of the Sick**

Available to those who are seriously ill or suffering from a prolonged illness. Call 952-758-3225

**Confirmation**

Preparation required. Call Laura Schoenecker at 952-758-5131

**Reconciliation**

Fridays from 3:00-4:00 pm in the church

**Baptism**

Preparation required. Call 952-758-3225

**Marriage**

Six months to one year preparation time required. Call 952-758-3225

**Rosary**

Monday – Friday 7:30 am in the church.

**Fatima Prayer Cell**

Monday – Wednesday in the SW Daily Chapel after 8 am service. (not being held at this time)

**Adoration**

Fridays 8:30 am to 6 pm in the church.

**Early Morning Scripture Study**

Wednesday 7:00 to 8:00 am in Pius X Room in church basement. (not being held at this time)

**Prayer Chain**

Judy: 952-758-2220 or Arnita: 952-758-4943

**BeFrienders**

Ann Schoenbauer: 952-758-3456 or  
Lois Giesen: 952-758-2138

**From the Desk of Father Eugene Theisen****Padre's Pen ~****Feast of St. Scholastica & Lenten Preparation**

One of the things of which I am an ardent believer is that we can and should call upon the intercession of our patron saints. They are our older brothers and sisters in Christ. They have passed through this world and stand in glory before the throne of God interceding on our behalf. They love us and desire us to be with them!

As one parish with three active churches, we have three great patrons whom we can celebrate and honor. We can call upon them for their help and assistance in good times and difficult times. We can and should ask them to help our parish and her churches stay strong, healthy, vibrant, and faithful. This week marks the feast of St. Scholastica. She was the sister of St. Benedict and she was known for her great love of the Lord. Because she is a patron of one of our Churches, it is a Solemn Feast Day for us. I will be offering the Solemn Feast Day Mass out at St. Scholastica Church at 5:00 PM Wednesday, February 10th (the Wednesday morning Mass at St. Wenceslaus is still closed to the general public in favor of the School Mass for our young people). Join us if you are able to celebrate with our parishioners who have our St. Scholastica Church as their home.

We are a week and half away from the beginning of Lent. Now is the time to prayerfully consider our Lenten Disciplines. They fall into three categories: Prayer, Fasting, and Almsgiving. While we take these penances on to help us with our own personal sanctity and preparation for Holy Week and the Resurrection of our Lord, we also take penances upon ourselves for the good of others. For example, the whole of the city of Nineveh repented in dust and ashes thereby averting great disaster for their city. We can also offer penances for the mercy of God upon our city, state, nation, and world. It has been almost a year living under the shadow of a Coronavirus. We have seen violence and rioting in our streets in our own state and across the nation. I think it would be a good thing to offer some part of our Lenten penances "For the Sake of Others." When we pray "We" the "I" is always implied and included in that "We", so we lose nothing personally.

I recommend that every able adult choose at least one penance from each of the areas of Prayer, Fasting, and Almsgiving and that you can go as high as three in each area in so far as the Spirit leads you. Do not be afraid. I have found over the years that once we get started in Lent with our penances, we find out how easy it can be. God gives us the grace needed to persevere and to do so joyfully. Next week we will publish (as usual) the Lenten regulations for our Archdiocese.

**Christum per Mariam,  
Fr. Theisen**

Parish Debt Last Month	Parish Debt This Month
\$374,966.45	\$328,731.49

**"Pies for Life" Fundraiser**

New Prague Knights of Columbus are selling 9" fresh bakery pies. Choose from this delicious variety: Pecan, Apple, Cherry, and French Silk at \$14.00 each. Proceeds from the sales will

go to area ProLife Organizations.

Great idea for Valentine's Day!

Pre-order sales

only by Sunday,

February 7th with

pies available for

pickup at New

Prague KC Hall on

Saturday, Febru-

ary 13th from

8 a.m. – 2 p.m.

To order go to:

NewPragueKC.org

or call

612-226-8378.

**Western Catholic Community****Important Information****Weekend Masses**

Saturday.....	8:15 pm	St. John
Sunday .....	8:00 am	St. Scholastica
Sunday .....	10:00 am	St. John

**SACRAMENTS & OTHER INFORMATION****Reconciliation**

Saturday.....	7:30 pm	St. John
---------------	---------	----------

**Baptism & Confirmation**

Preparation required. Call the Parish Office at 952-758-3225.

**Anointing of the Sick**

Call the Parish Office at 952-758-3225.

**Marriage**

Prep required. Call Fr. Eugene Theisen.

**Adoration**

Fridays 8:30 am to 6:00 pm at St. Wenceslaus Church

**PARISH OFFICE**

215 Main St. E., New Prague 56071  
952-758-3225

**Rev. Eugene Theisen****Pastor**

952-758-0469

Eugene.Theisen@npcatholic.org

**Hall Rental:**

**Pamela Sherlock** 952-758-0477 or email:  
Pamela.Sherlock@npcatholic.org

**Prayer Chain WCC:**

<b>Carol Bauer</b>	952-457-4057
<b>Noreen Giesen</b>	952-758-2608
<b>Marlene Dohmen</b>	952-492-6879

**Together in Hope**

CATHOLIC SERVICES  
APPEAL FOUNDATION  
SERVE • SUPPORT • STRENGTHEN

The Catholic Services Appeal Foundation is an independent foundation partnering with fellow Catholics to share Christ's love with neighbors in need through ministries that serve the poor, support life and strengthen the Faith.

**Your gift brings hope.**

**GIVECSAF.ORG**

**Mass Schedule Volunteers - St. John & St. Scholastica**

February 06 / 07 2021	Saturday St. John 8:15 PM	Sunday St. Scholastica 8:00 AM	Sunday St. John 10:00 AM
<b>Lector</b>	Jim Widmer	Becky Colwell	Amy Lemke
<b>Eucharistic Ministers</b>	Fr. Theisen	Kevin Odenthal	Amy Lemke
<b>Servers</b>	No Servers	No Servers	No Servers
<b>Gift Bearer Family</b>	No Gift Bearers	No Gift Bearers	No Gift Bearers

**COLLECTION INFORMATION****WESTERN CATHOLIC COMMUNITY  
JANUARY 31, 2021**

<b>Total Collected for 01/31 .....</b>	<b>\$3,016</b>
Collections at Mass .....	\$1,296
Electronic Collections.....	\$1,720
Under Budget for Weeks.....	- \$138
Actual Collections YTD.....	\$92,706
Under Budget YTD .....	- \$5,063
Budget for Next Week .....	\$3,154

**Thank you for your support!**

**Bulletin E-mail: info@npcatholic.org**

**Website: http://www.npcatholic.org**

## PARISH AND AREA NEWS



**\*\*Our Livestreamed Masses & Rosary may be viewed on our website, [npcatholic.org](http://npcatholic.org); on our Facebook Page, New Prague Catholic; or on YouTube, search "New Prague Area Catholic Community" at [YouTube.com](https://www.youtube.com).**

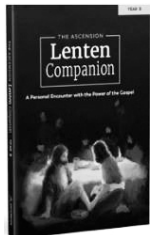
### Saint Alphonsus Liguori

(to pray anytime you are unable to physically participate in Communion)

*My Jesus,  
I believe that You  
are present in the Most Holy Sacrament.  
I love You above all things,  
and I desire to receive You into my soul.  
Since I cannot at this moment  
receive You sacramentally,  
come at least spiritually into my heart.  
I embrace You as if You were already there  
and unite myself wholly to You.  
Never permit me to be separated from You.  
Amen.*

### Looking for something good for Lent?

We are excited to once again offer a quality program for the Lenten Journey. Lenten Companion: A Personal Encounter with the Power of the Gospel is available for individual or group use. It combines Scripture, contemplative meditations, sacred art, and inspirational prayer exercises to create a unique retreat experience that will help you experience Lent in a way you never have before. Powerful weekly videos with links complement the book and will lead you deeper into your relationship with Jesus.



Books are available for \$5 in the back of church, with an envelope inserted with direction for payment. There is a limited supply, so contact Laura Schoenecker at 952-758-5131 or [laura.schoenecker@](mailto:laura.schoenecker@)

[npcatholic.org](http://npcatholic.org) to reserve your book. Optional discussion small groups will be offered. Contact Mary Higgins if you would like to join a small group at 952- 758-0464 or [mary.higgins@npcatholic.org](mailto:mary.higgins@npcatholic.org)

**Hope House Update:** The building that housed homeless families for 5 years may be torn down because it was no longer safe for occupancy, but the ministry goes on. Our local group "hosted" four families for a week in January, by providing meals for a week. Six evening meals prepared by food prep volunteers in the church basement kitchen were delivered by volunteer drivers to a hotel in Chanhassen. After a mega shopping trip, we also provided a week's worth of breakfasts and lunches for 16 people. A big thank you to all our donors who provided financial support and to the people who helped prepare and deliver meals. A special shout out to Mary Wick, Norb Sticha and Ruth Dols for going above and beyond, again.

Our next assigned hosting week is in October, when we should be able to return to Holy Trinity Lutheran Church for onsite hosting. Their addition with special accommodations for Hope House families is nearing completion, and we will be excited to return there. We're so grateful for their hospitality and generous support.



### Great News!

We received many capital campaign gifts and have reached our goals for the St. Wenceslaus and St. John's sites! This will enable us to do the various updates at these sites and eliminate St. Wenceslaus' debt. Although we haven't reached our goal for St. Scholastica, a large amount was contributed, which will help with some of the proposed updates. A special thank you to those who returned their commitment card and made financial contributions. To date we have received the following in pledges and non-pledged contributions to each site:

St. Wenceslaus: \$1,132,721 - (103% of \$1.1 million goal)  
St. John's: \$268,425 - (103% of \$260,000 goal)  
St. Scholastica: \$96,010 - (51% of \$190,000 goal)

We will continue to update the parish as projects are completed. This is a very encouraging moment for St. Wenceslaus Parish for so much to be contributed during a challenging time. We hope to celebrate with a gathering when the pandemic subsides. For now, thanks again for all who gave of their time and financial gifts. Please continue to pray for the success of this effort and our parish.



**~ COLLECTION INFORMATION ~  
St. Wenceslaus Site  
SUNDAY, JANUARY 31, 2021**

<b>Total Collected for 01/31 .....</b>	<b>\$20,442</b>
Collections at Mass .....	\$10,707
Electronic Collections.....	\$9,735
Over Challenge for Week.....	\$5,419
Actual Collections YTD.....	\$456,152
Under Challenge YTD.....	-\$28,388
Challenge for Next Week.....	\$15,023

*Thank you for your generosity!*

**Synod at Home: Tips and Tools for Growing in Faith New sessions February 18 – March 18**

The Church is taking time to listen to one another, pray, and discuss in order to determine priorities. These steps are important for every household that wants to thrive. The Synod at Home series takes helpful videos, tips and tools for growing in faith, and pairs them with family-friendly activities based on four pillars: Prayer & Sacraments, Lifelong Learning, Generosity & Service, and Traditions & Fun. Individuals, couples and families will find their faith and relationships strengthened by Synod at Home. Find videos and materials at [archspm.org/synod](http://archspm.org/synod), sign up for emails ([archspm.org/synod/updates](http://archspm.org/synod/updates)) or access through the Synod app: text APP to 88202, then in the app search for Archdiocesan Synod.

**Callings of Women in the Church:  
A Young Feminist Perspective**

It's an experience many women share: they are talented and passionate about discipleship, but they serve a church that puts limits on their participation simply because of their gender. Who can Catholic women turn to for encouragement? How is God calling people of all genders to speak their truths and stand up to the patriarchy? Presented through a young feminist lens, this presentation welcomes people of all genders to consider how the church can grow into a more inclusive, empowering community.

**Thursday, February 18, Webinar presentation from 6:30-8:30 p.m. Event is Free. Registration is required (register at least five days in advance of the event); please visit [www.collegevilleMN.com/theologyday](http://www.collegevilleMN.com/theologyday), call 320-363-3560, or email [theologyday@csbsju.edu](mailto:theologyday@csbsju.edu) to register.**

**The Common Thread of Holy Saturday: How a Trauma Lens Can Unite and Strengthen our Catholic Church:** Many people spend Holy Saturday (trauma's aftermath), by getting ready for Easter Sunday (triumphal new life), which reflects our overall unease with trauma (Good Friday). Trauma and its aftermath are viewed as something to "get over" as soon as possible, otherwise we risk shame and stigma. We forget: the resurrected Christ still carried his wounds. This presentation will explore the aftermath of trauma, and how use of a trauma lens can serve as powerful witness. We will discuss pastoral responses that help or hurt and will close with a

look at what a trauma-responsive Catholic Church might look like. Thursday, February 11, Webinar presentation from 6:30-8:30 pm. Event is Free. Advance registration is required; please visit [www.collegevilleMN.com/theologyday](http://www.collegevilleMN.com/theologyday), call 320-363-3560, or email [theologyday@csbsju.edu](mailto:theologyday@csbsju.edu) to register.



## FAITH FORMATION AND YOUTH MINISTRY

**Adult Formation** - Lent is just around the corner! February 17 is already Ash Wednesday. Lent has always been a time when our parishioners have really taken their faith seriously and found new ways to grow in their relationship with Jesus. Some options include:

**Weekday Mass w/Rosary** (Tuesday – Friday - in person or livestreamed)

**Adoration** Friday after Mass - SW Church

**The Little Black Book** available in the back of each church site

**The Lenten Companion** by Ascension Press, (see page four for more information)

**Stations of the Cross**, Friday at 7:00 pm rotating at our three sites – check the calendar on our website.

**The Bible in a Year Podcast** with Father Mike Schmitz (never too late to join) – it's the nation's number one podcast!

**Archdiocesan Synod offerings**

Converse with Jesus daily, set aside a time and space ... be sure to listen too.

Be the Good - step out of your comfort zone, make a conscious decision to be the hands and feet of Jesus to others. Any questions? - please contact [laura.schoenecker@npcatholic.org](mailto:laura.schoenecker@npcatholic.org)



## SCHOOL NEWS from SWS

**Dear Parishioners, Dear Parents, Grandparents, and Friends of SWS,** Catholic Schools are Amazing! Take a look in the news these days and you will see

glowing reports of how Catholic Schools are digging into the challenges of the current pandemic. This comes only with lots of prayer, hard work, and trust in God and in each other. Catholic schools guide everyone on the same path. Moving on the same path is what keeps us going not only during a pandemic but throughout our earthly lives. It is a greater path that we aim to follow and that is our path to eternity. Catholic schools can do this.

We got you SWS!

**Kim Doyle, Principal**

*Pray Often, Work Hard, Trust God!*

### SUPPORT OUR PATRONS

who make this bulletin possible by their advertising.

**NPCL INSURANCE COMPANY ■ 952-758-5964**

## LENT – a time to give up chocolate and lose weight?

Not exactly. These 40 days of Lent (we don't count Sundays) are a time when we focus on Jesus and his ultimate sacrifice for us. Through his life, death, and resurrection we are saved. We gather as a church community during Lent and offer ourselves to God through prayer (Matthew 6:5-15), fasting (Matthew 6:16-18) and almsgiving (Matthew 6: 2-4). Lent is also a time for us to slow down, focus on Christ and grow personally in spiritual holiness through varied ways. The Church recommends three ways; Prayer, Fasting and Almsgiving

### **Here are some ideas:**

**PRAYER:** There are so many ways we can pray. Here are a few that may be new to you ~ find one you enjoy.

**Lectio Divina:** Find a bible scripture, could be a paragraph from the upcoming Sunday's readings, or another that you find. Ask God to guide your prayer time. Follow these four simple steps: **1)** Read the passage, think of a phrase or word that stuck out to you. **2)** Reflect by reading the passage again, focusing on the word or phrase that touched you. Spend time thinking about what God might be saying to you, feelings that arise... **3)** Read the passage one more time, respond from your heart. Speak to God of your feelings and insights. **4)** Sit quietly and rest in God's love for you ... listen to what He may put on your heart.



**Daily Examen:** 5 simple steps: **1)** Relish the moments that went well and of the gifts given today. **2)** Request the Holy Spirit to lead you through a review of your day. **3)** Review your day. **4)** Repent of any bad choices, mistakes, or failures. **5)** Resolve in concrete ways to make tomorrow better.

**Daily Scripture Readings:** Bible references found in the weekly bulletin, or on our parish website. Grab your bible and pray with scripture (begin with the verses mentioned above)

**Get a Catholic App on your phone and use it:** (search "best free Catholic apps")

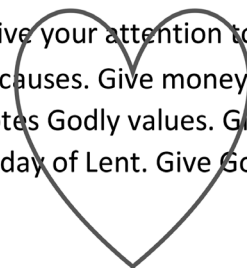
**Contemplative Prayer:** What is contemplative prayer? St. Teresa of Avila answers: *Contemplative prayer ... is nothing else than a close sharing between friends; it means taking time frequently to be alone with Him who we know loves us.*

## FASTING:



Fast from screen time and spend it in prayer. Pass up that daily latte and donate the money. Get quiet; spend 15 minutes in silence. Fast from angry retorts and offer a prayer for the person. Forego a favorite food and pray for those who go without.

**GIVING:** Do a daily random act of kindness. Put away your phone and really give your attention to your family. Grab a baby bottle from the back of church and fill it, donations for Pro-life causes. Give money or food to the Peace Center or another food shelf. Give time to an organization that promotes Godly values. Give up your place in line to someone behind you. Donate some nice items – one for every day of Lent. Give God additional time each day.



**LITURGIES & PRIEST'S MASS INTENTIONS**

INCLUDES ALL CHURCH LOCATIONS

WEEK OF FEBRUARY 08, 2021 - FEBRUARY 14, 2021

**Rosary at St. Wenceslaus**  
**MONDAY – FRIDAY at 7:30 am**  
**SATURDAY at 8:00 am**  
**LIMITED ATTENDANCE ONLY**

**Monday, February 08**

7:30 am ..... Rosary SW

**Tuesday, February 09**

8:00 am ..... Yvonne Brausen ☩ - Mass SW

**Wednesday, February 10**

8:00 am ..... SWS Mass SW

**Thursday, February 11**

8:00 am ..... Robert Brausen ☩ - Mass SW

**Friday, February 12**

8:00 am ..... Martha Svoboda ☩,  
 ..... Esther McKenzie ☩ - Mass SW

**Saturday, February 13**

3:00 pm ..... Confessions SW  
 4:00 pm ..... Mass for the People - Mass SW  
 8:15 pm ..... Mass SJ

**Sunday, February 14**

8:00 am ..... Anna Mae Barklow ☩ & Family - Mass SS  
 8:30 am ..... Stan Chromy ☩,  
 ..... Donald Tupy ☩ - Mass SW  
 10:00 am ..... Mass SJ  
 10:30am ..... Thomas J. Shaughnessy ☩ - Mass SW

**STAFF DIRECTORY** NEW PRAGUE AREA CATHOLIC COMMUNITY**Rev. Eugene Theisen**

Pastor

952-758-0469

Eugene.Theisen@npcatholic.org

**Fr. Michael Skluzacek**

Sacramental Minister

**James Herzog**

Seminararian

**Ruth Weinandt**

Parish Business Administrator

952-758-0466

Ruth.Weinandt@npcatholic.org

**MaryCarol Wolf**

Pastoral Minister

952-758-0463

MaryCarol.Wolf@npcatholic.org

**Pamela Sherlock**

COVID-19 Preparedness Plan Administrator

Media, Communications &amp; Technology

WCC Site Coordinator and Liaison

952-758-0477

Pamela.Sherlock@npcatholic.org

**Laura Schoenecker**

Faith Formation Director, Pre-K through

Adult, Safe Environment Coordinator

952-758-5131

Laura.Schoenecker@npcatholic.org

**Michelle Redfearn**

Interim Confirmation Coordinator

952-758-0486

Michelle.redfearn@npcatholic.org

**Mary Higgins**

Adult Faith Formation Associate

952-758-0464

Mary.Higgins@npcatholic.org

**Kim Doyle**

St. Wenceslaus School Principal,

Safe Environment Coordinator

952-758-3133

Kim.Doyle@swsaints.org

**Sarah Gullickson**

Preschool Director

952-758-0480

Sarah.Gullickson@swsaints.org

**Debbie Gregor**

Director of Liturgical Music at SW

952-758-4207

Debbie.Gregor@npcatholic.org

**Lisa Leverson**

Parish Administrative Assistant,

Bookkeeper

952-758-3225

Lisa.Leverson@npcatholic.org

**PARISH BUSINESS OFFICE**

215 Main St E, New Prague, MN 56071

PH 952-758-3225 FAX 952-758-2960

**FAITH FORMATION OFFICE**

On campus in Parish Activity Center

**ST. WENCESLAUS SCHOOL**

227 Main St E, New Prague, MN 56071

PH 952-758-3133 FAX 952-758-2958

**LITTLE SPIRITS PRESCHOOL**

On campus of SWS ~ 1950's building

952-758-0480

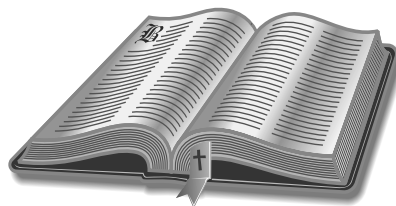
**MAINTENANCE DEPARTMENT**

952-758-2327

**SCRIPTURE READINGS**

WEEK OF FEBRUARY 08, 2021 -

FEBRUARY 14, 2021

**Monday, February 08**

Gn 1:1-19 / Mk 6:53-56

**Tuesday, February 09:**

Gn 1:20-2:4a / Mk 7:1-13

**Wednesday, February 10**

Gn 2:4b-9, 15-17 / Mk 7:14-23

**Thursday, February 11:**

Gn 2:18-25 / Mk 7:24-30

**Friday, February 12:**

Gn 3:1-8 / Mk 7:31-37

**Saturday, February 13:**

Gn 3:9-24 / Mk 8:1-10

**Sunday, February 14:**

Lv 13:1-2, 44-46 /

1 Cor 10:31-11:1 / Mk 1:40-45

**MEETINGS & EVENTS  
CALENDAR**

WEEK OF FEBRUARY 08, 2021 -

FEBRUARY 14, 2021

**THERE ARE  
 CURRENTLY NO  
 MEETINGS/EVENTS  
 BEING HELD AT ANY OF  
 OUR PARISH SITES.**

**Safe Environment Information:**

Saint Wenceslaus facilitates a safe environment for minors and vulnerable adults by requiring all employees, as well as volunteers, who have regular or unsupervised interaction with minors or vulnerable adults, to be Essential 3 qualified (background check, Code of Conduct, and Safe Environment Training). For more information, contact laura.schoenecker@npcatholic.org

If you or someone you know has been abused, exploited, or harassed by a clergy member, religious brother or sister, lay employee or volunteer of a parish or Catholic school, your first call should be to law enforcement. You are also encouraged to contact the archdiocese's Victim Assistance Program at 651-291-4475.

<b>Patty's Place</b> • Specialty Coffees • Fresh Pastries • Hand Dipped Ice Cream • Cake Decorating 108 E Main Street #1 New Prague 952-758-5808 Open 7 Days A Week	 (New Prague-Ceska-Louisville) <b>Mutual Insurance Company</b> 205 10th Ave. NE New Prague, MN 56071 <b>952-758-5964</b> www.npclinsurance.com <b>Competitive Rates for Farm &amp; Home</b> <b>Since 1882</b>	<b>SKLUZACEK</b>  Cabinetry & Woodworking Dave Skruzacek • 612-986-8443 New Prague, MN	 <b>First Bank &amp; Trust</b> 1101 1st Street SE, New Prague • 952-758-4491 BANkeasy.com <small>MEMBER FDIC</small>
 <b>NEW PRAGUE FAMILY &amp; SPORTS CHIROPRACTIC CENTER</b> Dr. Mike Kilpatrick 952-758-4121	<b>Scott &amp; Jenny Smisek</b>  Mechanical Inc. New Prague, MN 952-758-2986 scott@sjsmechanicalinc.com	<b>WORNSON GOGGINS</b> <small>ATTORNEYS   ADVISORS   ADVOCATES</small> 119 E. MAIN ST., NEW PRAGUE <b>952-758-4161</b> WWW.LAWYERSNP.COM	<b>BACK and NECK CLINIC of NEW PRAGUE</b> Dr. Jeremy Tupy • Dr. Jolene Otremba DOCTORS OF CHIROPRACTIC Located across from The New Prague Times 201 East Main Street 952-758-5135
<b>Bruzek FUNERAL HOME</b> <i>Serving With Compassion Since 1903</i> Steve and Mary Frost Cremation & Funeral Planning 952-758-4949	 <b>MAIN ST. DENTAL</b> Jon P. Colling, D.D.S. Ruth Peterka, D.D.S. newpraguedentist.com OFFICE HOURS MON-FRI 211 10th Ave. NE New Prague 952-758-2376	 <b>RE/MAX ADVANTAGE PLUS</b> <b>952-290-3440</b> www.sullivangroupmn.com	<b>MARQUARDT JEWELERS</b>  New Prague
 <b>Parkview Medical Clinic</b> Daniel R. Berg, MD Michael P. O'Rourke, MD Jean Craig, MD Heather Hamernick, MD Kay Maust, MD <i>New Patients Welcome</i> <i>Same Day Appointments Available</i> <i>Saturday Morning Appointments</i> www.parkviewclinic.com <b>952-758-2535</b>	 <b>NEW PRAGUE AUTO REPAIR</b> www.NewPragueAutoRepair.com Since 1974 Gary Kohoutek, Owner 952-758-4471 205 4th Ave. SW New Prague, MN 56071	 <b>KUBES Furniture &amp; Flooring</b> 133 Main Street West New Prague, MN 56071 <b>952-758-4588</b> www.kubeshomefurniture.com Mon-Wed. 9-5, Thur. 9-7, Fri. 9-5, Sat. 9-3	 <b>CONNELLY PLUMBING &amp; HEATING, LLC</b> "Your Local LENOX Dealer" New Prague, MN • 952-758-7098
<b>Ambroz Plumbing, Inc.</b> Paul Ambroz New Construction - Remodel - Service <b>952-758-6265 • Cell 952-292-4413</b> Lic# 059407-PM	<b>TUPY INSURANCE AGENCY, INC.</b> For Your Personal or Business Insurance Needs We are here to Serve You! 111 East Main Street New Prague, MN <b>952-758-2433</b>	 <b>Knights of Columbus Council #2023</b> <b>K.C. Hall in New Prague</b> Weddings, Receptions, Anniversaries, Card Tournaments, Birthday Parties Call Tom Busch at 763-381-7916 or K.C. Hall at 952-758-3656 Bingo (License Permit #01187) October-April Come and have fun! 411 - 4th Ave. SW <b>3rd Degree</b> 2nd Thursday, 7 pm Grand Knight Jim Wagner 612-940-0834 <b>4th Degree</b> 3rd Thursday, 7 pm Faithful Navigator Mike Moeller • 952-461-4552 <b>Ladies Aux. Meetings</b> 4th Monday, 7 pm Contact Rosella Kees 952-758-3578 <b>Insurance Agent</b> Dave Goedtko 507-720-1652	 <b>NEW PRAGUE MINI STORAGE, INC.</b> From 5x10 thru 10x40, Climate Controlled, Now Available. Easy access, 7 days a week, 24 hours a day www.NewPragueMiniStorage.com <b>952-758-7819</b>
 <b>MACH LUMBER</b> Convenient - We Deliver! <b>952-758-3235</b> M-F 7-5; Sat. 8-Noon 201 Second Ave. SW, New Prague 1 block S of Main St, across from ConAgra	 <b>KUBES Custom Cabinets</b> Wencil Kubes New Prague 952-758-2262	 <b>YOU CALL... WE HAUL...</b> Complete Household Transfer Licensed • Bonded Reasonable Rates TIM or JOHN 952-758-2552 16264 310 St. New Prague	 <b>Marlene Mushitz, CRS, GRI, CDPE</b> 1301 1st St. NE New Prague <b>612-978-2222</b> www.DynamicMarlene.com
 <b>Odenthal Landscaping LLC</b> Retaining Walls, Patios & Much More For All Your Landscaping Needs New Prague, MN www.odenthallandscaping.com Phone & Fax: 507-364-5460 Cell: 612-703-4803	 <b>KUBES REALTY</b> <b>5% Commission Full Service</b> Since 1988 KubesRealty.com	 <b>New Prague Veterinary Clinic</b> Your Hometown Vet for Four Generations Dr. William F. Vollmar Dr. Katie Vollmar Boarding Services 1003 East Main St. New Prague, MN 952-758-2881	 <b>AMERICAN FAMILY INSURANCE</b> Melissa Kreuser, Agent Bus: (952) 758-5460 1301 1st St NE, New Prague
<b>DOUG VAYDA</b> <i>Specialist in the practice of Orthodontics</i> 101 Central Ave. New Prague 952-758-6999	 <b>MALA STRANA REHABILITATION CENTER</b> & Assisted Living New Prague • 952-758-2511	<b>SKLUZACEK CONSTRUCTION, INC.</b> Steve Skruzacek, Owner #0004897 <b>952-758-4158</b>	 <b>Phillip M. Scheiber, FICF Field Agent</b> <b>952.649.0504</b> phillip.scheiber@kofc.org Life Insurance • Disability Income Insurance Long-Term Care Insurance • Retirement Annuities
<b>Roundbank</b> New Prague: 952-758-BANK (2265) • Farmington: 651-463-8300 www.roundbank.com Member FDIC 	 Quality appliances and service you can trust from your hometown appliance source <b>Whirlpool</b> <b>KitchenAid</b> (952) 445-2916 Or online at MyApplianceSource.com On Hwy 169 in Shakopee We may be smaller...but we try harder	 <b>my APPLIANCE SOURCE</b> SALES • SERVICE <b>Suel Printing Company</b> <i>Pleased to be the printers of your Parish Bulletin.</i> 200 Main St. East, New Prague 952-758-4435 awann@suelprinting.com	
 <b>WASTE MANAGEMENT</b> <b>952-890-1100</b>	 <b>Michael P. Traxler Financial Advisor</b> WEALTH MANAGEMENT, LLC <i>Investments &amp; Financial Planning Solutions</i> Securities & Advisory Services offered through Michael Traxler Wealth Management, LLC a Registered Investment Advisor in the State of Minnesota. 222 Main Street East New Prague, MN 56071 <b>952-758-8060</b>		