

*St. Mary's Parish Family*

114 Princeton Street/PO Box 2200

Jefferson, Massachusetts 01522

508-829-4508

## *19<sup>th</sup> Sunday* IN ORDINARY TIME



Peter said to him in reply, "Lord, if it is you, command me to come to you on the water." He said, "Come." Peter got out of the boat and began to walk on the water toward Jesus. But when he saw how strong the wind was he became frightened; and, beginning to sink, he cried out, "Lord, save me!" - Mt 14:28-30

TRUST IN THE  
*Lord's*  
Graces

A close-up of a hand reaching upwards towards a bright, glowing light source, possibly the sun or a divine light, against a soft, hazy background.

*Lord,*

let us see  
your kindness,  
and grant  
us salvation.

PSALM 85

The  
*Assumption*  
of the  
BLESSED VIRGIN MARY

A religious painting depicting the Assumption of the Virgin Mary. Mary is shown rising into the air, surrounded by angels and saints, with a bright, heavenly light emanating from her.

**ALL ARE WELCOME HERE**

If you are alienated or upset,  
we welcome you lovingly.  
If you are in need of forgiveness,  
Jesus forgives you completely  
with unconditional love.  
If you have been hurt by the Church,  
we are truly sorry.  
If you are angry, Jesus offers you peace.  
If life has become burdensome,  
we are here to support you.  
We are happy you are here...  
and want you to stay.  
We would like to share our lives with you.

**Schedule Around Campus...****Saturday, August 12**

3:30 PM Confessions  
4:30 PM Mass/Church

**Sunday, August 13**

8:00 AM Mass/Church  
Coffee Shoppe/GR  
  
10:00 AM Mass/Church  
**Owen O'Neil Baptism**  
Children's Liturgy of the Word/GR  
Coffee Shoppe/GR

12:20 PM **Volleyball Tournament at:  
St. Christophers/Court #2**

**Monday, August 14**

12:00 PM Mass/GR

**Tuesday, August 15**

8:00 AM Mass for the Assumption/Church  
7:00 PM Mass for the Assumption/Church

**Wednesday, August 16**

8:00 AM Mass/GR  
7:30 PM Al-Anon Meeting/GR

**Thursday, August 17****Friday, August 18****Saturday, August 19**

3:30 PM Confessions  
4:30 PM Mass/Church

**Sunday, August 20**

8:00 AM Mass/Church  
Coffee Shoppe/GR  
  
10:00 AM Mass/Church  
Children's Liturgy of the Word/GR

**Mass Schedule and Intentions****Saturday, August 12**

4:30 PM Harold & Phyllis Greiff (*Yonts*)

**Sunday, August 13**

8:00 AM William Trepanier (*His wife Marta*)  
6 Year Anniversary

10:00 AM Constance Marr (*The Marr Family*)

**Monday, August 14**

12:00 PM Damien Fedoryka (*A Friend*)

**Tuesday, August 15**

8:00 AM Parishioners of St. Mary's  
7:00 PM Parishioners of St. Mary's

**Wednesday, August 16**

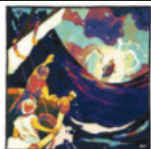
8:00 AM Maggie Early (*Marcia Grimes*)  
4th Anniversary

**Thursday, August 17****Friday, August 18****Saturday, August 19**

4:30 PM Joseph & Ann McCarthy (*Barbra L.*)

**Sunday, August 20**

8:00 AM Winnie Mangano (*The Hurley family*)  
  
10:00 AM Richard Buffone (*His Wife Maureen*)  
13th Anniversary



"Take courage, it is I;  
do not be afraid"  
~Jesus

Someone you know may be in an abusive relationship.  
Abuse Hotline 508-755-9030



Solemnity of the  
*Assumption of the  
Blessed Virgin Mary*

Masses on  
Tuesday, August 15th  
8:00 AM  
And  
7:00 PM





For Those St. Mary's Parishioners  
Who have not already donated we ask your  
kind consideration of a gift to the

### 2023 Annual Partners in Charity Appeal

...which you can make online  
Just go to [partners-charity.net/donate](https://partners-charity.net/donate)

#### 213 Families Have Already Donated

and for those gifts we are truly grateful.

Our parish is currently 90% away from reaching our goal!

Also, donor envelopes can be found in the church pew this weekend. If using an envelope you can return it through the mail or by dropping it off at the Parish Office, or by placing it in the collection basket.

Your gift will help the Diocese implement its essential charitable, pastoral and educational works in the year ahead. Tens of thousands of people are the beneficiaries of our charitable giving.

Hopefully, you will consider making a gift from your generosity and spirit of sacrifice. It takes many gifts to reach our diocesan goal of \$5 million.

All checks should be made payable to:  
"Partners in Charity".

We hope you'll be generous in making a gift which reflects your gratitude to God for all you have. Thank you!

## Religious Education



- The Religious Education **Calendar will be mailed next week with confirmation of the day and time that we are expecting your child for the upcoming Faith Sharing Year.** Families with children that have not yet registered will receive a calendar, however, registration is necessary for class placement for the fall. Forms can be downloaded from our website.
- **We can't do it without you!** We are in need of a minimum of 60 catechists/teachers as well as substitutes, general aides and helpers before we are able to welcome our nearly 500 young people back for a new year of Faith Sharing. Classes are held on Sunday afternoon and evening for students in Middle School & High School, Monday afternoon and Tuesday afternoons for our Grade 1-5 children. Catechists are needed in all grade levels. We provide training and will equip you with all that you need to share your faith. **Please email [kogrady1@msn.com](mailto:kogrady1@msn.com) or [maryjaneciesluk@stmaryjeff.com](mailto:maryjaneciesluk@stmaryjeff.com) or call today if you are able to assist in any way!**
- **Texts, supplies and materials are being purchased for your children** ~ If you have not yet registered, please download a registration form from our website and return your completed form today. **Families are reminded to register by September 11<sup>th</sup> in order to avoid class start up delay.**
- **We invite all those children and young people that have been away or have had little or no formal Religious Education to register for our "Beginnings Program".** Classes of various levels Grades 3-12 meet on Sunday afternoon to help kids "catch-up" in order to enter at grade level following this year-long instruction period. Please call for registration details.
- **Parochial School Children preparing for First Eucharist and Confirmation** are required to register for Sacramental Preparation within their home parish. If you have a child planning to receive a Sacrament, please register today!



Bring your voice, bring your instrument, bring your talent....We are always looking to grow our FAN-TASTICK Teen Music Ministry! Young People Grades 6-College, please contact Kerry at [kograsy1@msn.com](mailto:kograsy1@msn.com) or call the Office for more information!

### ALL EQUIPMENT PROVIDED

Every  
Sunday,  
5:30-7:00 PM

St. Mary's



Please wear comfortable sneakers and bring a water.

**INTRODUCTION TO PICKLE BALL**  
Learn the basics of pickle ball, meet people, and have fun!

BRING A FRIEND!



### St. Mary's Youth Volleyball Schedule

8/7 ~ St. Mary's vs. St. John ~ WINNER ST. MARY'S

**St. Mary's Ranked #3 Overall!!!!**

### Sunday ~ Recreational Division Tournament:

8/13 ~ 12:20 PM @ St. Christophers, Worcester

Court 2: O.L.H. vs. St. Mary's Quarterfinal

To report abuse, please contact Judith Audette, Director of Healing and Prevention, Diocese of Worcester at (508)929-4363



Go to  
<https://stmarysjeff.churchgiving.com>  
To sign up for St. Mary's  
Automated Online Giving

**AUGUST 13TH, 2023**

Please call the office 508 829 4508 or email Beth Cunningham [beth@stmaryjeff.com](mailto:beth@stmaryjeff.com) if you have an infirmed or homebound parishioner who is ill or unable to attend Mass. Communion and a friendly visit can be made by one of our Eucharistic Ministers.

**PASTORAL STAFF**

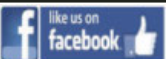
- **Timothy M. Brewer, Pastor**  
([tbrewer@stmaryjeff.com](mailto:tbrewer@stmaryjeff.com)) • Ext 11
- **John Ladroga, Deacon**  
([jladroga@stmaryjeff.com](mailto:jladroga@stmaryjeff.com))
- **Sarah Brodie, Parish Manager**  
([sbrodie@stmaryjeff.com](mailto:sbrodie@stmaryjeff.com)) • Ext 10
- **Jennifer Coling, Parish Administrative Asst.**  
([admin@stmaryjeff.com](mailto:admin@stmaryjeff.com)) • Ext 19
- **Maryjane Ciesluk, Co-Director of Religious Education/  
Safe Environment Coordinator**  
([maryjaneciesluk@maryjeff.com](mailto:maryjaneciesluk@maryjeff.com)) • Ext 12
- **Kerry O'Grady, Co-Director Religious Education**  
([kograde1msn.com](mailto:kograde1msn.com)) • Ext 14
- **Beth Cunningham, Outreach Minister & Parish Nurse**  
([beth@stmaryjeff.com](mailto:beth@stmaryjeff.com)) • Ext 18
- **Peter Gerardi, Music Director**  
([petergerardi60@gmail.com](mailto:petergerardi60@gmail.com))

**Pastoral Office Phone** - 508-829-4508 ~ **Fax** - 508-829-0429

**Religious Education Office** - 508-829-6758

**St. Mary's Cemetery** - 508-757-7415

**Please visit our Website:** [www.stmarysjeff.com](http://www.stmarysjeff.com)



<https://www.facebook.com/StMarysChurchJefferson>

**EUCCHARISTIC CELEBRATIONS**

Saturday - Vigil at 4:30 PM

Sunday - 8:00 AM, 10:00 AM and 5:00 PM (Sept thru May)

Daily Mass - Mon 12:00 PM, Tue & Wed 8:00 AM

Holy Days - 7:00 PM Vigil, 8:00 AM Holy Day

(unless otherwise noted in bulletin)

**SACRAMENT OF RECONCILIATION**

Saturday 3:30—4:00 PM

May also be arranged by calling the Parish Office.

**SACRAMENT OF BAPTISM**

Please call the Parish Office at least two months in advance, to arrange for participation in the preparation program and the date of Baptism.

**SACRAMENT OF MARRIAGE**

Couples intending to celebrate this Sacrament are requested to contact the Pastoral Staff at least one year in advance.

**JUST A REMINDER:**

Registration forms for St. Mary's Parish can be found in the Parish office, or our website, [www.stmarysjeff.com](http://www.stmarysjeff.com).

Please take the time to register as it is the best way for the staff to communicate, through emails and mailings, what is happening in the parish.

**AUGUST 13TH, 2023**



Stewardship spirituality invites us to surrender control of our lives to God in grateful recognition that all that we have is a gift from Him.

While today's readings remind us that, of course, God is always in control of His creation and His creatures, they illustrate what amazing things can happen when we fully permit God to take charge of our lives — in other words, what can happen when we embrace the stewardship way of life.

When we take our eyes off God, we fail to see that all is gift from Him, we lose trust in Him and we do not make our lives a grateful response to Him.

Peter makes this mistake in our Gospel passage from Matthew. Jesus sends the disciples in a boat ahead of Him to the other side of the shore. Later that evening, Jesus casually strolls up to the boat, walking on the sea. He invites Peter to join Him. As Peter begins to walk on the water, he momentarily takes his eyes off Jesus to notice the strong wind surrounding them. With that, he sinks.

But what if Peter had not taken his eyes off Christ? What a grand adventure he could have had out there walking on the sea with Jesus! When we take our eyes off Christ, the many blessings He has given us, and the loving way He treats us, we sink, too.

But when we embrace the stewardship way of life, letting go of a tight hold over our money, time, and talents, our lives become a grand adventure, rooted firmly and gratefully in the God Who always cares for us.

### PARISH TITHE

Our Parish Tithe for the **Week of August 6th** will go to **Veteran's Inc.**

Veterans Inc. is determined to provide what that veteran needs within a culture that affirms the individual's dignity, uncovers his or her inner strengths, and promotes self-determination and independence.



We offer our  
**THANKS AND GRATITUDE**  
To our  
**Mustard Seed Volunteers**

Mustard Seed Project's members are all non-paid volunteers, including our leadership team. We rely solely on the support of the communities that we operate in, with 88% of our revenue coming from donations and gifts. Therefore, we understand the importance of building trust with our supporters. Any and all donations we receive will go directly to either helping our clients or continuing the fight against homelessness

### **STEWARDSHIP IN OUR PARISH BUDGET 2022-2023**

**Week of August 6th**

|                               | <u><b>Weekly</b></u> | <u><b>YTD</b></u> |
|-------------------------------|----------------------|-------------------|
| Amount Needed.....            | \$9,696              | \$472,377         |
| Amount Collected.....         | \$9,409              | \$432,099         |
| Budget Surplus (Deficit)..... | \$(287)              | \$(40,278)        |

**Thank You**

**LCU** Leominster  
Clinton  
Holden  
Sterling  
Worcester  
You're somebody.  
800-649-4646 • leominstercu.com

**WOOD PELLETS & BIO-BRICK**  
FREE Local Delivery  
w/forklift trucks  
YEAR ROUND!  
87 Main Street, Rutland, MA • 508-886-3058  
www.rutlandhomecenter.com

**SUNNYSIDE**  
Ford Since 1923  
508-829-4333  
Sales • Service • Parts • Body Shop • Quick Lane  
www.sunnysideford.com

**MILES FUNERAL DIRECTORS**  
"SERVING THE PARISH COMMUNITY  
SINCE 1896"  
Richard Mansfield, Ricky Mansfield  
Funeral Directors  
1158 Main Street, Holden  
100 Worcester Road, Sterling  
508-829-4434 978-422-0100  
Advance Funeral Planning  
www.milesfuneralhome.com

**HOLDEN HEARING AID CENTER**  
695 Main St., Holden, MA 01520  
(508) 829-5566  
DrMoreno@HoldenHearingAid.com  
www.HoldenHearingAid.com

Matthew Moreno, Au.D.  
DOCTOR OF AUDIOLOGY

**BUSY BEE Nursery & LANDSCAPE CONSTRUCTION**  
www.busybeenuresory.com  
• Trees • Shrubs • Perennials • Planting  
• Walks • Patios • Walls • Hydroseeding  
• Excavation • Grading • Pruning  
Rte. 68, Holden 508-829-5380

# SUPPORT OUR ADVERTISERS!

**STEVEN D'AQUILA, D.C.**  
**CHIROPRACTOR**  
(508) 829-9955

**FREE AD DESIGN**  
with purchase  
of this space  
CALL  
800-477-4574

**PJ LOMBARDO**  
INSURANCE AGENCY  
789 Wachusett St., at Holden Storage, Holden  
508-829-7100  
www.pjlombardo.com  
Your auto, home and business insurance are a must, so pick  
an agent that you know, like and trust!

**NOTRE DAME**  
HEALTH CARE

**STEVEN D'AQUILA, D.C.**  
**CHIROPRACTOR**  
(508) 829-9955

**Atchue Insurance**  
Protecting tomorrow today  
HOME • AUTO • LIFE • DISABILITY  
BUSINESS INSURANCE • EMPLOYEE BENEFIT PLANS  
(508) 755-5200 • www.atchue.com  
190 Park Avenue, Worcester, MA

**BURNHAM**  
RESIDENTIAL & COMMERCIAL  
LANDSCAPING SERVICE  
D. BURNHAM  
829-2692  
RES.  
Holden  
829-3809  
Lawn Maintenance • Bark Mulch  
Patios • Walks • Fertilizing  
Programs • Plowing • Sanding

**Notre Dame du Lac Assisted Living**  
• Mission-driven  
• Not-for-profit  
• For Family & Community  
555 Plantation Street, Worcester  
508-852-5800 x2105  
notredamehealthcare.org

**Atchue Insurance**  
Protecting tomorrow today  
HOME • AUTO • LIFE • DISABILITY  
BUSINESS INSURANCE • EMPLOYEE BENEFIT PLANS  
(508) 755-5200 • www.atchue.com  
190 Park Avenue, Worcester, MA

**McDonald's of Holden**  
638 Main Street • Holden  
Thank You for your Patronage  
Dan & Katie Hurley

**WE'RE HIRING!**  
AD SALES EXECUTIVES  
BE YOURSELF.  
BRING YOUR PASSION.  
WORK WITH PURPOSE.  
• Paid training  
• Some travel  
• Work-life balance  
• Full-Time with benefits  
• Serve your community

**CONTACT ME Sara Ramic**  
sramic@4LPi.com • (800) 477-4574 x1659

**LET'S GROW YOUR BUSINESS**  
Place Your Ad Here  
and Support Our Parish!

**CONTACT ME Sara Ramic**  
sramic@4LPi.com • (800) 477-4574 x1659

**IF YOU LIVE ALONE**  
**MDMedAlert!** CALL NOW!  
✓ Ambulance/Police  
✓ Family/Friends  
✓ GPS & Fall Alert  
800.808.9294  
md-medalert.com

As Low As  
**\$19<sup>95</sup>**/mo.

Place Your Ad Here and Support our Parish!  
Instantly create and  
purchase an ad with  
**AD CREATOR STUDIO**  
4lp.com/adcreator

**BUYING, SELLING,  
DOWNSIZING or INVESTING?**  
**LaRoseSellsHomes.com**  
Kate LaRose, Realtor  
Parishioner & Local Resident  
\*Specializing in Central MA\*  
Licensed for 10 years  
Direct: (508) 662-1269  
Email: klarose@kw.com  
KELLER WILLIAMS  
Pinnacle Central  
60 Shrewsbury St., 2nd Floor, Worcester, MA 01604

**WE APPRECIATE OUR  
ADVERTISERS!**

**IF YOU LIVE ALONE**  
**MDMedAlert!** CALL NOW!  
✓ Ambulance/Police  
✓ Family/Friends  
✓ GPS & Fall Alert  
800.808.9294  
md-medalert.com

As Low As  
**\$19<sup>95</sup>**/mo.

Place Your Ad Here and Support our Parish!  
Instantly create and  
purchase an ad with  
**AD CREATOR STUDIO**  
4lp.com/adcreator