



OUR LADY OF REFUGE, Orchard Lake MI

Today is The Epiphany of the Lord January 4, 2026

Mission Statement

Under the protection of Our Lady of Refuge and guided by the Holy Spirit, our parish family is dedicated to the propagation and deepening of our faith, rooted in the Sacraments, Sacred Scripture and Tradition of the Catholic Church. As stewards of the Father's gifts, we strive to reflect the love of Christ through the support of our parish and in our outreach and service to others.



THE EPIPHANY OF THE LORD

"And you, Bethlehem, land of Judah, are by no means least among the rulers of Judah; since from you shall come a ruler, who is to shepherd my people Israel." Mt 2:6

OUR LADY OF REFUGE

MASS TIMES AND INTENTIONS

WEEKLY READINGS AND OBSERVANCES

Readings for the week of January 4, 2026

Sunday: Is 60:1-6/Ps 72:1-2, 7-8, 10-11, 12-13/Eph 3:2-3a, 5-6/
Mt 2:1-12

Monday: 1 Jn 3:22-4:6/Ps 2:7bc-8, 10-12a/Mt 4:12-17, 23-25

Tuesday: 1 Jn 4:7-10/Ps 72:1-2, 3-4, 7-8/Mk 6:34-44

Wednesday: 1 Jn 4:11-18/Ps 72:1-2, 10, 12-13/Mk 6:45-52

Thursday: 1 Jn 4:19-5:4/Ps 72:1-2, 14 and 15bc, 17/Lk 4:14-22a

Friday: 1 Jn 5:5-13/Ps 147:12-13, 14-15, 19-20/Lk 5:12-16

Saturday: 1 Jn 5:14-21/Ps 149:1-2, 3-4, 5 and 6a and 9b/
Jn 3:22-30

Next Sunday: Is 42:1-4, 6-7/Ps 29:1-2, 3-4, 3, 9-10/Acts 10:34-38/
Mt 3:13-17

Observances for the week of January 4, 2026

Sunday: The Epiphany of the Lord

Monday: St. John Neumann, Bishop

Tuesday: St. André Bessette, Religious

Wednesday: St. Raymond of Penyafort, Priest

Next Sunday: The Baptism of the Lord

PRIEST SCHEDULE

Mon 1/5: 8:15am (Fr. Nelson)

Tue 1/6: 8:15am (Fr. Nelson)

Wed 1/7: 8:15am (Fr. Nelson)

Fri 1/9: 8:15am (Fr. Nelson)

Sat 1/10: 5:00pm (Fr. Nelson)

Sun 1/11: 9:30pm (Fr. Nelson)
11:30am (Fr. Nelson)

Mon 1/12: 8:15am (Fr. Nelson)

Tue 1/13: 8:15am (Fr. Nelson)

CONFESSIONS:

Saturday at 3:30

INTENTIONS

Mon 1/5 Eileen Hatfield (+) requested by the parish family

Tues 1/6 Gene Zeimet (+) requested by the parish family

Wed 1/7 Michael Gordon Sr. (Intentions) requested by the Gordon family

Fri 1/9 Kate Perlman (Intentions) requested by her family
Robert Grant (+) requested by the parish family

Sat 1/10 Lynne Tomajko (+) requested by the McGuffie family
Our Lady of Refuge Parishioners

Sun 1/11 (9:30) Raja Kinaia (Intentions) requested by the Goodman family
(11:30) Ray & Ann Gedeon (+) requested by the Majercik family
Lily & Lalo Javier (Intentions) requested by the Javier family

Mon 1/12 Arne Gorney (Intentions) requested by his family
Pat Patterson (+) requested by Connie Bayma

Tues 1/13 Bill Barz (+) requested by the parish family

LECTOR SCHEDULE

Saturday 1/10
Liz Oras
Paula Thibideau

Sunday 1/11
(9:30am)
Chrissy Forester
Laney Henson

(11:30am)
Gabrielle Ansara
Reese George

FR. SURESH, SAC

MODERATOR OF THE FAMILY

248-682-0920 EXT. 1110

SOLEMNITY OF THE EPIPHANY OF THE LORD

“We saw his star as it rose and have come to do him homage” (Mt 2:2). This is the testimony that the Magi gave to the inhabitants of Jerusalem, announcing to them that the king of the Jews was born.

The Magi testified that they had set out in a different direction in their lives because they had seen a new light in the sky. Let us pause to reflect on this image as we celebrate the Epiphany of the Lord during this Jubilee of hope. I would like to highlight three characteristics of the star about which Matthew the Evangelist speaks: it is bright, it is visible to all and it points the way.

First of all, the star is bright. Many rulers at the time of Jesus called themselves “stars” because they felt important, powerful and famous. Yet the light that revealed the miracle of Christmas to the Magi was not any of these “lights”. Their artificial and cold splendour, arising from their scheming and power games, could not satisfy the needs of the Magi who were searching for newness and hope. Instead, they were satisfied by a different kind of light, symbolized by the star, which illumines and warms others by allowing itself to burn brightly and be consumed. The star speaks to us of that unique light that can show to all people the way to salvation and happiness, namely that of love. This is the only light that can make us happy.

Above all, this light is the love of God, who became man and gave himself to us by sacrificing his life. As we reflect, then, we can see that this light likewise calls us to give ourselves for one another, becoming, with his help, a mutual sign of hope, even in the darkest nights of our lives. Let us think about this: are we radiant with hope? Are we able to give hope to others with the light of our faith?

The star led the Magi to Bethlehem by its brightness. We too, by our love, can bring to Jesus the people that we meet, enabling them to see in the Son of God made man the beauty of the Father’s face (cf. Is 60:2) and his way of loving, which is through closeness, compassion and tenderness. Let us never forget this: God is close, compassionate and tender. This is love: closeness, compassion and tenderness. Moreover, we can do this without the need for extraordinary means or sophisticated methods, but simply by making our hearts bright with faith, our gazes generous in welcome, our gestures and words full of gentleness and kindness.

Thus, as we reflect on the Magi, who fixed their eyes on heaven in searching for the star, let us ask the Lord that we might be bright lights that can lead one another to an encounter with him (cf. Mt 5:14-16). How sad it is when someone is not a light for others.

The star speaks to us of God’s dream that men and women everywhere, in all their rich variety, will together form one family that can live harmoniously in prosperity and peace (cf. Is 2:2-5).

Walking together is “traditionally associated with our human quest for meaning in life” (cf. *Spes Non Confundit*, 5). By looking at the star, we can also renew our commitment to be women and men of “the Way”, as Christians were referred to in the first years of the Church (cf. Acts 9:2).

Thus may the Lord make us lights leading others to himself; may he make us generous, like Mary, in giving of ourselves, welcoming and humble in walking together, so that we may meet him, recognize him and do him homage. Renewed by him, may we go out to bring the light of his love into the world. (Pope Francis)

Staff

Family-Moderator
Our Lady of Refuge
 Fr. Suresh Rajaian, SAC

Family of Parishes and
Priests in Solidum

Our Lady of Sorrows
 Very Rev. Canon Walter J. Ptak

St. Fabian
 Msgr. Tim Hogan
 Fr. Matthew Kurt

Prince of Peace
 Fr. Andrew Dawson

St. Andrew Kim
 Rev. Seungsoo Oh

Parish Offices
 3725 Erie Dr.
 Orchard Lake, Mi. 48324
 (Office) 248.682.0920
 (Fax) 248.682.3794
 Website: www.olorcc.org
 Email: secretary@olorcc.org

Business Manager
 Eva Ashor

Parish Secretary
 Artha Horowitz

Evangelical Charities
 Joellen Shortley

Worship
 Lisa Marie Blanek

Music
 Joanne Gorney

Dir. Of Rel. Ed.
 Stephanie Gordon

School
 Lauri Hoffman, Principal
 248.682-3422
 Principal: lhoffman@olr-school.net
 Website: olr-school.net

Now Is the Perfect Time to Make a QCD from Your IRA

As we approach year-end, it's a wonderful moment to consider a **Qualified Charitable Distribution (QCD)** from your IRA to support **Our Lady of Refuge**. A QCD offers meaningful tax advantages for you, and your gift directly benefits the parish—**including being free from the AOD assessment during the Christmas collection.**



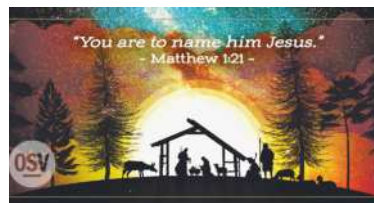
To receive the tax benefits of a QCD, please remember the following requirements:

- You must be **at least 70½ years old**
- There is an **annual maximum** amount you may contribute
- The gift must be made to an **eligible charity**
- The **distribution must be paid directly to the charity**, not to you as the IRA owner

If you are planning a QCD gift this year, please consider naming **Our Lady of Refuge** as your charitable recipient. Your generosity strengthens our parish and helps us continue our Christian mission with joy and gratitude.



It is time to make your Christmas contribution to Our Lady of Refuge. The envelope for this once-a-year occasion is in your packet. It is worth noting that all Christmas donations are exempt from archdiocesan assessment, so your generosity is greatly appreciated.



Can't find your personalized envelope? You accidentally trashed it?

No worries...just write **CHRISTMAS** on the memo line of your gift check or on the outside of whatever envelope you choose to use. Be sure to include your last name and we will look up your envelope number and post the gift to your "account."

You may also donate online by visiting our website at www.olorcc.org or scanning the QR code. The prompts will guide you through the steps to donate to the Christmas collection. *~ Thank you! ~*



OUR PARISH STEWARDSHIP

December 20 & 21, 2025

Offertory: \$6,834
Online Giving: \$4,023
Total: \$10,857

Budget Shortfall: (\$24,164)

WORSHIP

LISA MARIE BLANEK

248-682-0920 EXT. 1114

LBLANEK@OLORCC.ORG

EPIPHANY

This weekend we celebrate Epiphany. While doing some research, I came across an overview created through AI that helped explain the meaning of the word in simple terms: *An epiphany is a sudden “aha!” moment—a flash of deep understanding about something important. It reveals a truth you didn’t see before, like realizing the need to change your habits or finally understanding a complex idea. It is a moment of profound clarity that changes your perspective or gives you direction, often described as a sudden insight into reality.*



Our Catholic Church celebrates the Solemnity of the Epiphany each year on January 6. For convenience in the United States, this solemnity is moved to the Sunday after January 1 because of its great significance. On this day, we remember how the “three kings,” drawn by the light of a new star, found the infant Jesus. These wise men respond with wonder and awe as they encounter the manifestation of Jesus as God—our Light, our Hope, and our Salvation.

Epiphany reminds us that God continues to reveal Himself in our lives, often in quiet yet powerful ways. Just as the Magi followed the star with trust and perseverance, we too are invited to seek Christ’s light in our daily decisions, relationships, and moments of uncertainty. When we allow ourselves to be guided by that light, our faith deepens and our path becomes clearer, even when the journey is challenging.

This new year will conclude the Ordinary Jubilee with the closing of the Holy Door in the Papal Basilica of Saint Peter in the Vatican on January 6. The Pope has said, *“During the Holy Year, may the light of Christian hope illumine every man and woman, as a message of God’s love addressed to all.”* Do you see the Light? Do you follow the Light?

One Christian tradition that many of us embrace is chalking the top of our door trim—a practice we do in both the church and the school. The inscription above the door reads: **20 + C + M + B + 26**. The numbers represent the new year, while the letters stand for the names of the Magi: Caspar, Melchior, and Balthazar. They also stand for the Latin phrase *Christus Mansionem Benedicat*, which means, *“May Christ bless this house.”*

**CHALKING OF DOORS
DURING EPIPHANY**

20 —from the current century or millennium.

C —Caspar

M—Melchior

B—Balthazar

26 -- Current Year, 26 for 2026

+ —the crosses signify Jesus Christ.

CMB
is also the Latin abbreviation of 'Christus Mansionem Benedicat,' which means, 'May Christ bless this house.'

EVANGELICAL CHARITY

JOELLEN SHORTLEY, OFS

248-682-4099

ECC@OLORCC.ORG

Thank you for the fabulous generosity of our parish, school, community and the many volunteer hours of our Christian Service Commission we provided the following to members of our community for the holidays:

Food Panty

- ◆ 70 Christmas meals provided in the Food Panty
- ◆ 30 hams donated by the Hesano family
- ◆ 72 Pies donated by the Christ family
- ◆ Beautiful pastries, breads, cakes, cookies and muffins from Ellen's Bakery
- ◆ Weekly shopping in the food pantry thanks to the food and monetary donations from OLR, OLR School, Prince of Peace, St. Fabian, St. Bens and St. Owens and the leadership of Teresa Roose and our dedicated volunteers. Thank you, Howie Scheer, for all the trips carrying hams and pies to and from the cafeteria to the Pantry.

Adopted Families

19 Families who shop in the Pantry were adopted for Christmas with many gifts provided. Thank you to everyone who supported the gift giving efforts especially:

- ◆ All the generous individuals and families who purchased and wrapped an abundance of gifts for our pantry families.
- ◆ Individuals who exchanged coats and shoes to get the right sizes.
- ◆ The lovely sisters who said yes to my request for some last-minute gifts.
- ◆ OLR Knights of Columbus for spending several hours on December 17 giving the gifts to our adopted families after they shopped in the pantry for their Christmas meal.

Special Thanks

- ◆ The Archdiocese of Detroit for approving a \$1,000 grant for the Food Pantry
- ◆ United Wholesale Mortgage, Rosenberger North America and employees of Rosati, Schultz, Joppich & Amtsbuechler for adopting 4 families.
- ◆ Catholic Charities of Southeast Michigan for providing generous grants to two families
- ◆ Shellie and Ray Duenas for the helping me organize the adopted family gifts, wrap, draft letters to send to Giving Tree charities and thank you notes for donations.
- ◆ Jan Mittelstaedt for delivering weekly food donations from Prince of Peace. Oscar Mittelstaedt for transporting the hams and delivering food to pantry families who do not have cars.




LITURGICAL MUSIC

JOANNE GORNEY

248-418-7240

MUSIC@OLORCC.ORG



*Solemnity
of the
Epiphany
of the
Lord*

We Three Kings of Orient Are

This hymn traces the physical and spiritual journey of the Magi. Each gift mentioned carries a deep theological meaning revealed at Epiphany: Gold for Christ's Kingship, Frankincense for His Divinity, and Myrrh foreshadowing His redemptive sacrifice and death.

What Star Is This?

Focusing on the celestial sign that guided the wise men, this hymn relates to the "Star of Wonder" that signifies God's light breaking into a dark world. It emphasizes that the light of Christ is meant for all people who seek Him.

The First Nowell

The word "Nowell" (Noel) signals a new birth or news. This hymn bridges the Nativity and the Epiphany, recounting how both humble shepherds and royal wise men followed the same light to find the King of Israel.

In the Bleak Mid-winter

This contemplative hymn contrasts the vastness of the Creator with the "littleness" of the infant in the manger. It relates to the Epiphany by asking what we, like the Magi, can offer the Lord—concluding that our hearts are the truest gift we can give.

Go Tell It on the Mountain

While often sung at Christmas, this hymn takes on a "missionary" character for Epiphany. It echoes the call for those who have seen the light of Christ to go out and manifest that light to all nations.

RELIGIOUS EDUCATION

STEPHANIE GORDON

248-682-0920 EXT. 1142

RE@OLORCC.ORG

The Christmas Eve Children's Mass

The Children's Christmas Eve Mass was very well attended and our Religious Education students did a great job reenacting the Nativity Story, followed by a wonderful homily from Deacon Dan!



OUR LADY OF REFUGE NEWS AND EVENTS

Attention

We are excited to enhance our liturgical environment with fresh-cut flowers each weekend and invite you to contribute \$50.00 or donate a bouquet of fresh flowers in memory of a loved one. Your generosity will be acknowledged in the bulletin with a note recognizing the person you are honoring.



To participate, please complete the form available on the shelf in the gathering space. Then, place the form in an envelope and either drop it in the collection basket or deliver it to the Parish Office.

Thank you for your consideration and support.



JOIN US ON TUESDAY,
JANUARY 13TH AT 7:00PM

EVENING INCLUDES
ADORATION, PRAISE AND
WORSHIP, PRAYER, AND
POWERFUL REFLECTIONS
FROM FR. JASON BROOKS, LC

Join us for a
DINNER DANCE
featuring a
line dancing instructor
Saturday, January 17th, 2026
following the 5:00 Mass
in the Social Hall

*LET'S ALL STEP BACK, STEP TOGETHER
AND HUSTLE ONTO THE DANCE FLOOR
FOR A LITTLE BIT OF COUNTRY &
A LITTLE BIT OF HUSTLE*

RSVP in the gathering space or
by email @ Encounte@olorcc.org
Suggested Donation \$ 15 Per Person



All are Welcome

Join us for a Euchre Night on Tuesday,
January 6th at 7:00 PM
in the Social Hall!

Whether you're a seasoned player
or just in it for the laughs, it's all
about fun and fellowship.

Bring a friend and join the parish
community for cards and conversation!

APPLICATIONS NOW OPEN AT OUR LADY OF REFUGE SCHOOL

You may now apply for the 2026-2027 school year. We are currently full in our PK4 and PK3-3 day programs.



☎ 248-682-3422
📍 3750 Commerce Rd
@ www.olr-school.net



Contact Us Today!

Pray for the men and women who serve in our Armed Forces
“Dear Lord Jesus and Mary, Mother of God, hold all these brave souls in the palm of your hand; comfort them and their families. Send angels of protection, love and comfort to all the service men and women still at war, bring them home safely and comfort their families. We ask this through Christ Our Lord, Amen.”

- Rev. P. Nowak-Army (Chaplain)
- Clare Bizer-Coast Guard
- Eugene Bizer-Coast Guard
- Christopher Bowman-Coast Guard
- Daniel Culbertson-Navy
- Nicholas Harbaugh-Marines
- Shane Kelly-Air Force
- Harrison Lamar-Navy
- Michael Pinto-Air Force
- Jake Ramirez-Marines
- Beanica Raymond - Army

PANTRY NEEDS

The food pantry at Our Lady of Refuge is open every Wednesday to assist individuals and families facing hardship. We invite you to help by donating any of the essential items listed. Your generosity makes a meaningful difference in the lives of those we serve. Thank you for your continued support.

URGENT FOOD ITEMS

- Dried Beans & Lentils
- Cereal
- Rice
- Baked, Garbanzo & Pinto Beans
- Canned Peas
- Ramen Noodles
- Spaghetti Sauce
- Spaghetti & Elbow Noodles
- Peanut Butter & Jelly
- Chili & Beef Stew
- Ketchup & Mustard

CARE ITEMS

- Toilet Paper
- Paper Towel
- All Purpose Cleaner
- Toilet Bowl Cleaner
- Shampoo & Conditioner
- Women’s & Men’s Deodorant
- Women’s & Men’s Body Wash
- Toothpaste & Toothbrushes
- Q-Tips



Please contact Cora Armitage at 248-736-6228 to add or remove a name.



Marriage need healing? 45 years of experience!
January 9-11, 2026 - Farmington Hills, Michigan
HelpOurMarriage.org 800-470-2230

There is no handbook for a Perfect Marriage. It doesn't exist!

LAMPHERE'S TREE SERVICE

Complete Tree & Stump Removal
24 Hr. Emergency Service
Trimming • Fully Ins.
Member St. Perpetua
248-673-8536

Providing In-Home Senior Care with Trusted and Caring Home Health Aides, Companions and Nurses.


inspirehomecare.com | 248.972.5528

A CLEAR REFLECTION OF QUALITY

REID GLASS

www.reidglass.com
Phone: (248) 353.5770 • Fax: (248) 353.0678
22223 Telegraph Road • Southfield, MI 48033



WaterWorkPlumbing.com
248-213-9248
24 Hr. Emergency Service

\$20 OFF ANY SERVICE

FAMILY OWNED AND OPERATED SINCE 1996!



Brick Paving Design & Installation
Construction • Remodeling • Renovations
LICENSED
248.230.1600
creativedesignbuildgroup.com

Premier Paint & Home Improvement | **Integra**

Interior & Exterior Residential Painting
248-895-3687
Integra3687@gmail.com
IntegraRenovations.com

THE ORIGINAL BUDGET TREE SERVICE

Over 20 Years Experience • Licensed & Fully Insured

*Not affiliated with any other budget tree service

TREE & SHRUB REMOVAL • LOT CLEARINGS
TREE & SHRUB TRIMMING • STORM DAMAGE • FIREWOOD

FREE ESTIMATES 800-964-7785

24 Hour Emergency Service • *ASK FOR AXEL OR ERIC

30% OFF For Seniors

with coupon • Limit 1 coupon per job • Limited time offer on coupon



schenaroofing.com | 586.949.4777



Skilled Craftsmanship • Innovative Solutions • Peace of Mind

BAY POINTE GOLF CLUB



248-360-0600
NOW BOOKING
SCHEDULE A TOUR

TIMELESS CELEBRATIONS IN AN UNFORGETTABLE SETTING

WEDDING | SOCIAL | CORPORATE | SHOWERS | EVENTS

SUPPORT OUR ADVERTISERS!



Homeowner Helper Handyman Services
Services from A to Z

- Carpentry
- Plumbing
- Electrical
- Landscape
- ALL Indoor-Outdoor Services & Repairs
- Concrete
- Skid Steer Work

(248) 505-3685
License & Insured

MARY THERAPY CENTER, PLLC

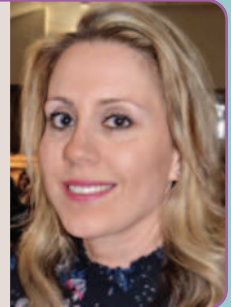
Christine Mary, MA LLP

- We provide Value Driven Christian Counseling
- Compassionate counseling for personal growth for individuals, couples, and families
- Support for stress, anxiety, depression, and other life stressors
- Confidential and professional care

*All services are via Telehealth

Now accepting new clients • Accepts most insurances

248-702-4470 • www.MaryTherapyCenter.com
email: contact@marytherapycenter.com



ADT-Monitored Home Security

Get 24-Hour Protection From a Name You Can Trust

- Burglary
- Flood Detection
- Fire Safety
- Carbon Monoxide



SafeStreets

833-287-3502



BLACK LABEL

STAR LINCOLN

THE LINCOLN WISH LIST SALES EVENT

LUXURY IS WITHIN REACH



2025 NAVIGATOR • AVIATOR • CORSAIR • NAUTILUS

248-354-4900 | starlincoln.com | 24350 W 12 Mile Rd., Southfield, MI

Edward Jones

Member SIPC

401(k) Rollovers • Wealth Strategies • Retirement Planning
Business Retirement Plans • Life Insurance & Annuities
College Savings • Intergenerational Planning • Estate & Legacy Strategies



Stephen S. Yono, CFP®, CEPA®
Financial Advisor
160 W Commerce Rd
Commerce Township, MI 48382
248-716-3397
stephen.yono@edwardjones.com
edwardjones.com/stephen-yono



SUBIRA HOMES AFC

(248) 303-9786
God Bless You



We are dedicated to delivering exceptional care tailored to meet the unique needs of individuals and families.



For ad info. call 1-800-477-4574 • www.lpicommunities.com

15-0031

A.J. DESMOND & SONS

FUNERAL DIRECTORS

Troy | Crooks Rd
248.362.2500

Troy | Rochester Rd
248.689.0700

Royal Oak | Woodward
248.549.0500

Terry Desmond
www.AJDesmond.com

Now offering luncheon receptions
at our Woodward Ave location



SPENCER ROOFING

1748 Traditional Dr, Ste B.
Walled Lake, MI
248-926-5800

CENTURY 21

Professionals

RICK BARTUS

Parish Member



Connecting People with Homes

248-909-4848

bartus@comcast.net

dekalash
WEST BLOOMFIELD



7092 ORCHARD LAKE RD.
WEST BLOOMFIELD, MI 48322

Instagram:
@DEKALASHWESTBLOOMFIELD
248-686-2326

Do you need a caregiver?

Call The Helpers at:
248-494-3316

THE **Helpers**
CARE SOLUTIONS, LLC

www.thehelpersllc.com



JEREMY DINVERNO
Project Manager

313-736-6335
313-REMODEL

DinvernoRemodeling.com

FREE ESTIMATES

OVER 53 YEARS EXPERIENCE
FAMILY OWNED & OPERATED
STATE LICENSED * BONDED * INSURED



AC
DRYWALL &
ACOUSTICAL

248-926-0250

9440 Elizabeth Lake Road
White Lake MI 48386



CORNERSTONE ROOFING

The Proof is in
Our Results

Locally owned and operated

248-563-9387

cornerstoneroofingmi.com

McCabe Funeral Home

One Name...One Family...Over 132 Years

FARMINGTON HILLS
31950 W. Twelve Mile Rd.
(248) 553-0120

CANTON
851 North Canton Center Rd.
(734) 981-4530

www.McCabeFuneralHome.com

Riverside Chapel

SIMPSON - MODETZ
FUNERAL HOME



5630 PONTIAC LAKE RD
WATERFORD, MI 48327
(Between Airport
& Crescent Lake Roads)
(248) 674-4181

"One of the largest and finest Family Owned
funeral homes in Oakland County."



Private Duty
care in
Oakland County.

313-563-0226
assurantcare@yahoo.com

We accept long-term care insurance
Licensed • Bonded • Insured
Visit us at www.assurecareinc.com



Serving Seniors in Macomb,
Oakland & Wayne County

DENISE ALEARDI
Senior Housing Solution Expert
734-788-3000



Giroux Pappas TRIAL ATTORNEYS

Injured? We're Here to Help.

All types of Accidents &
Medical Malpractice Cases



Trusted by Attorneys
and Judges.
Faith-driven values.
Proven results.
Serving Southeast Michigan.

Religious Jewelry • Diamonds • Custom Jewelry

RONNIE'S Jewelry & Loans

ESTABLISHED 1972

7716 Cooley Lake Rd • Waterford
248.363.1597 • www.ronniesjewelry.com
We Buy Gold, Bullion, Watches, Coins & Jewelry

30% OFF WITH COUPON



roofone.com

Licensed & Insured # 262000486



275 S Telegraph Rd
Pontiac, MI 48341

248-322-1000

Serving Southeast Michigan and Beyond!
22+ Years Experience

Local
Convenient
No Pressure
Free Estimate
CALL US
TODAY!



MATHESONHEATING.COM

Save \$46
ON ANY SERVICE REPAIR
OR INSTALLATION

- WATER HEATERS
- HEATING
- COOLING
- PLUMBING

248-938-0913



For ad info. call 1-800-477-4574 • www.lpicommunities.com

15-0031