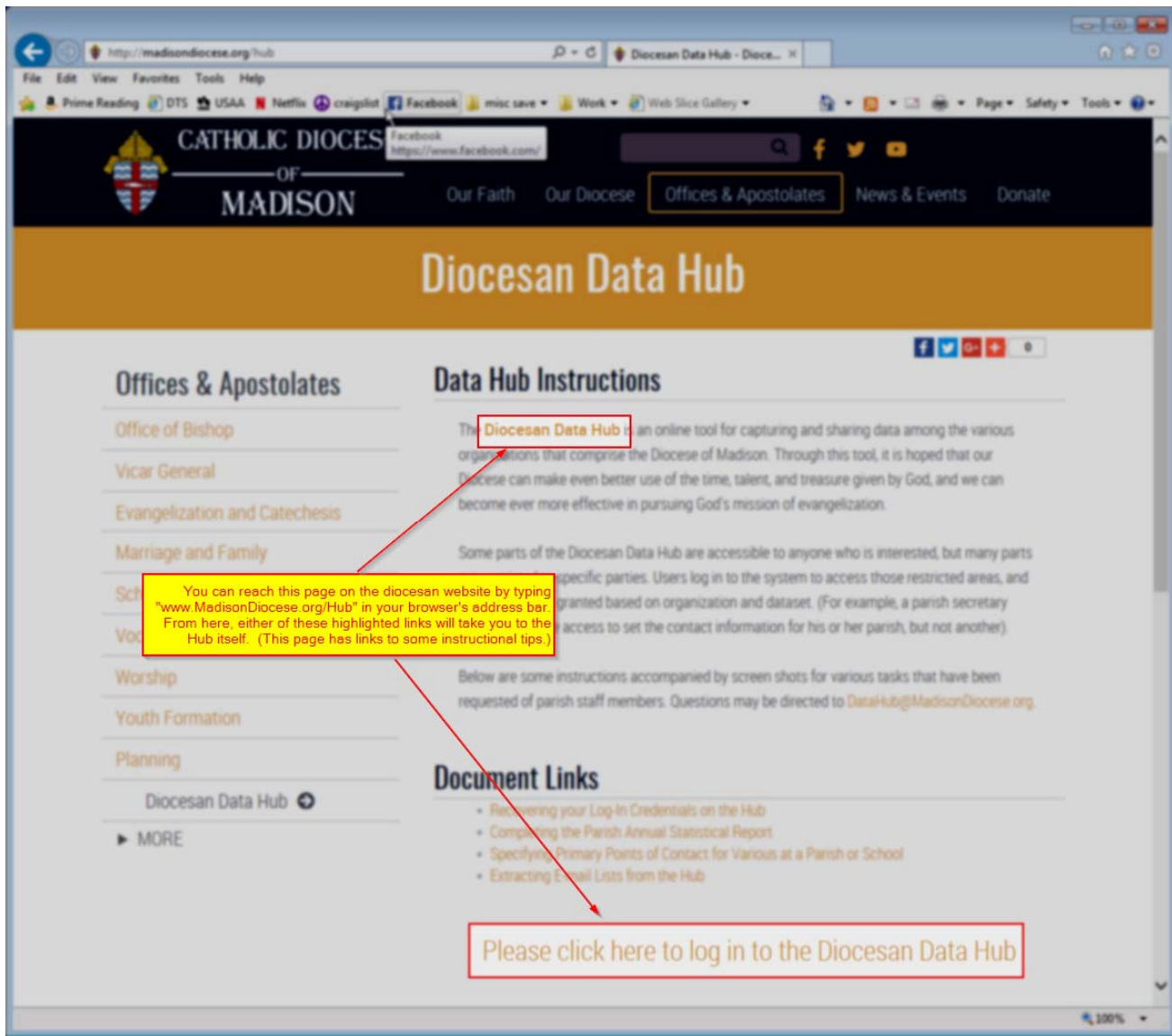


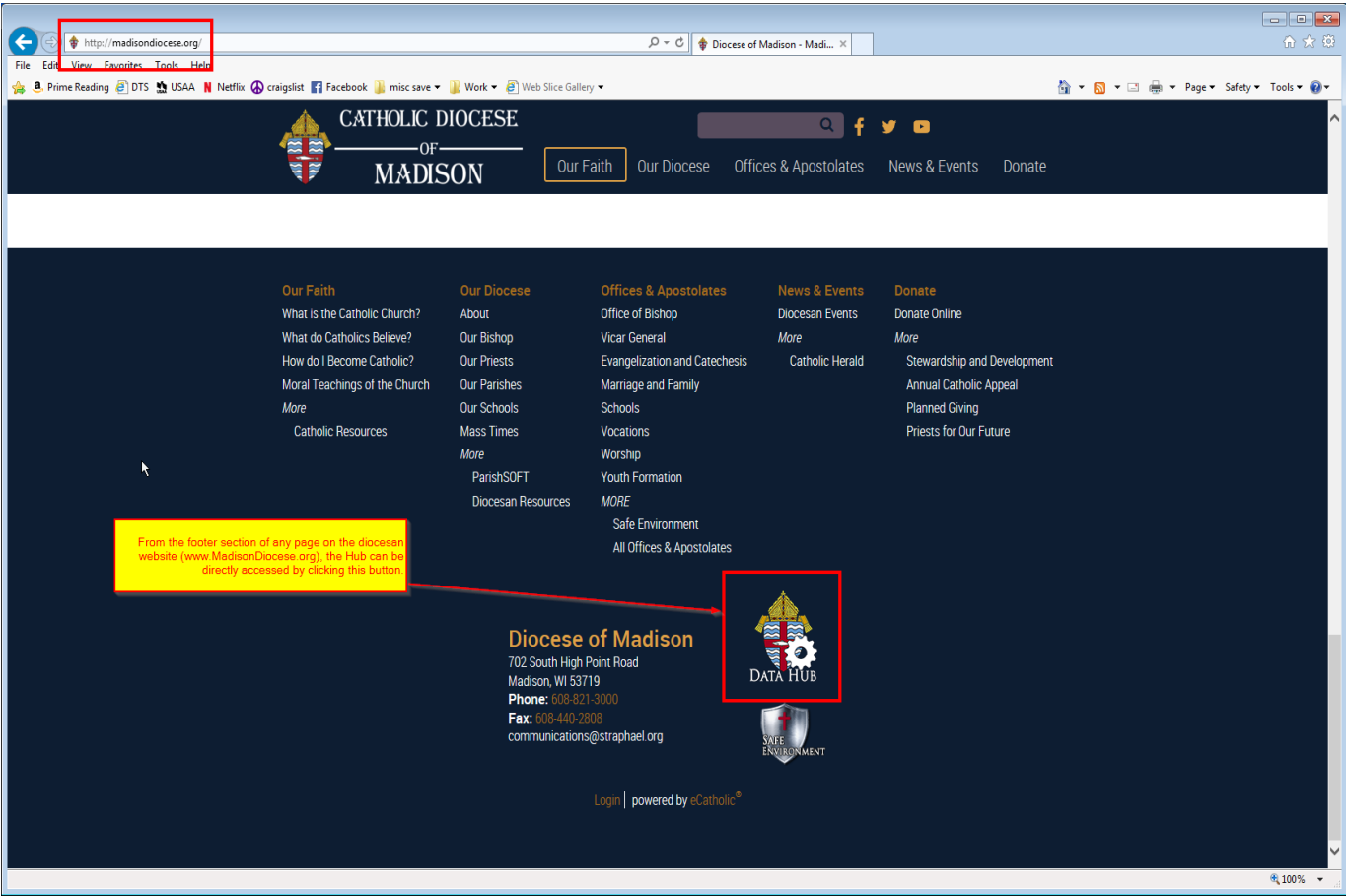
# Examining Charts

To reach a “landing page” for the Diocesan Data Hub, go to [www.MadisonDiocese.org/Hub](http://www.MadisonDiocese.org/Hub)

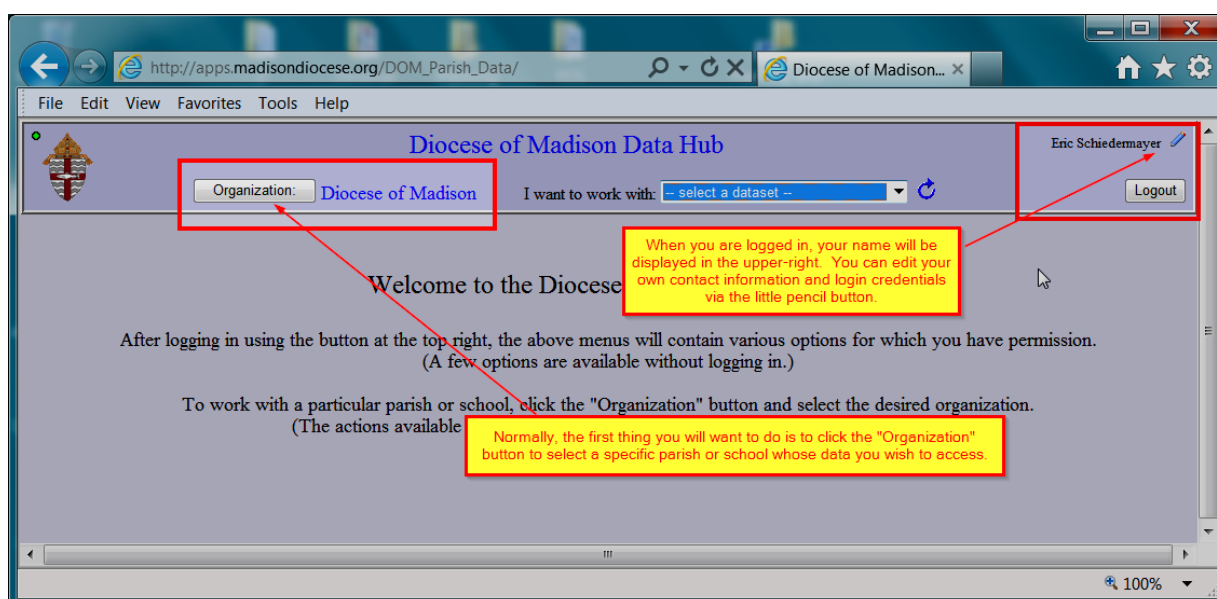
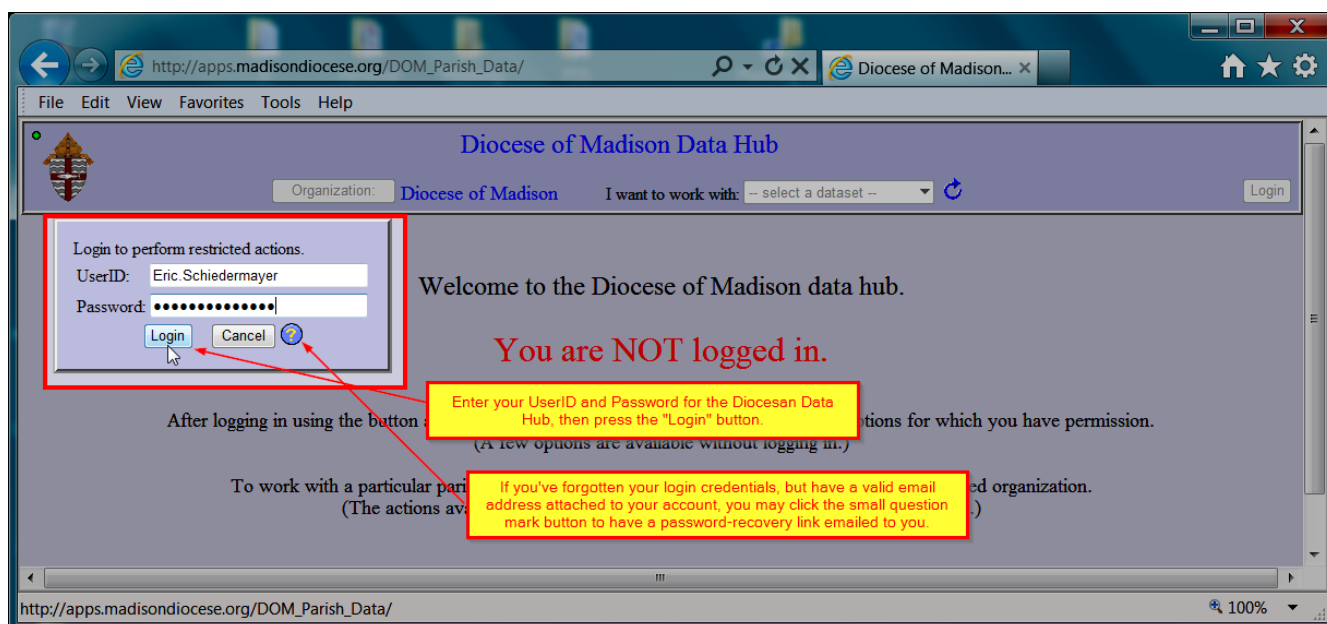
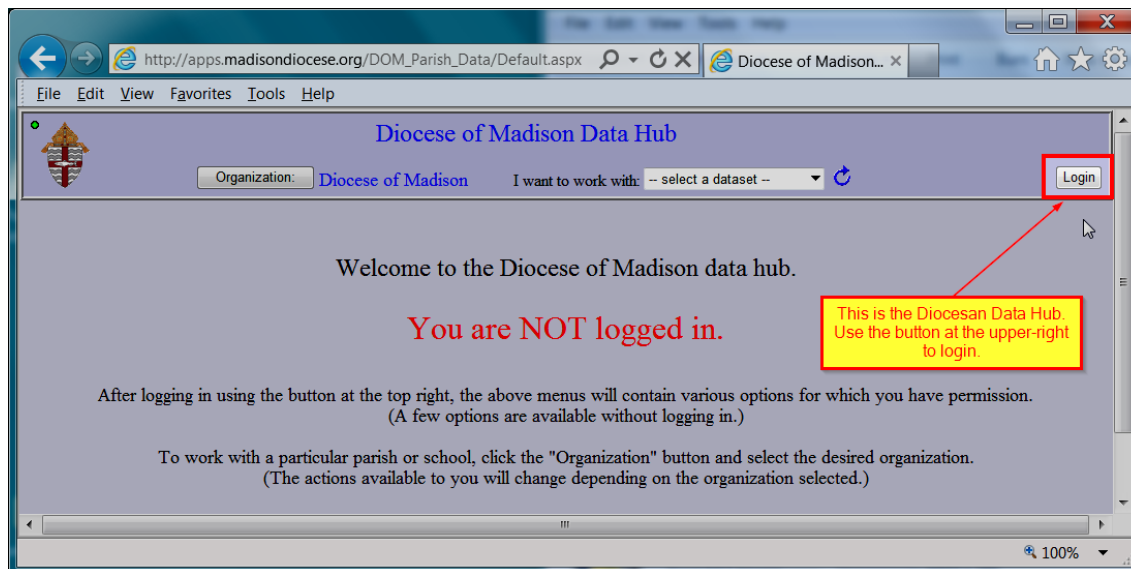
From here, you can access Hub instructional documents or the actual Hub itself as follows:



Alternatively, you can also reach the Hub from a link on the footer of every page in the main diocesan website as follows:



## Logging into the Diocesan Data Hub:



Using the menus on the Diocesan Data Hub:

Diocese of Madison Data Hub

Organization: **Diocese of Madison** I want to work with: -- select a dataset --

Logout

Select an Organization

Show: Parishes which are: Active Entire Diocese

114 organizations match the search criteria.

| Location       | Name                            | Status | Type   |
|----------------|---------------------------------|--------|--------|
| Argyle         | Saint Joseph Parish             | Active | Parish |
| Ashton         | Saint Peter Parish              | Active | Parish |
| Baraboo        | Saint Joseph Parish             | Active | Parish |
| Belleville     | Saint Francis of Assisi Parish  | Active | Parish |
| Belmont        | Saint Philomena Parish          | Active | Parish |
| Beloit         | Our Lady of Assumption Parish   | Active | Parish |
| Beloit         | Saint Jude Parish               | Active | Parish |
| Beloit         | Saint Thomas the Apostle Parish | Active | Parish |
| Benton         | Saint Patrick Parish            | Active | Parish |
| Berlin         | All Saints Parish               | Active | Parish |
| Blanchardville | Immaculate Conception Parish    | Active | Parish |
| Bloomington    | Saint Mary Parish               | Active | Parish |
| Roscoche       | Corpus Christi Parish           | Active | Parish |

Click to select this organization

Click the "Organization" button on the top menu bar to bring up the "Select an Organization" dialog. Click on the organization whose data you want to access.

(Use the "Show" dropdown to change from Parishes to Schools or other organization types.)

Click the "Entire Diocese" button to work with menu items which apply to the entire diocese.

Diocese of Madison Data Hub

Organization: **Ashton, Saint Peter Parish** I want to work with: -- select a dataset --

Logout

Welcome to the Diocese of Madison

Now that I've selected a specific organization (Saint Peter Parish in Ashton in this case)... the set of options available in the "I want to work with" menu changes to those specific things for which I have permission on this organization.

Diocesan Appeals  
Hispanic Ministries survey  
Overview info  
Parish statistics  
SOWDI participants  
Staff and Contacts

To work with a particular parish or school, click the "Organization" button and select the desired organization. (The actions available to you will change depending on the organization selected.)

Using the online chart reports:

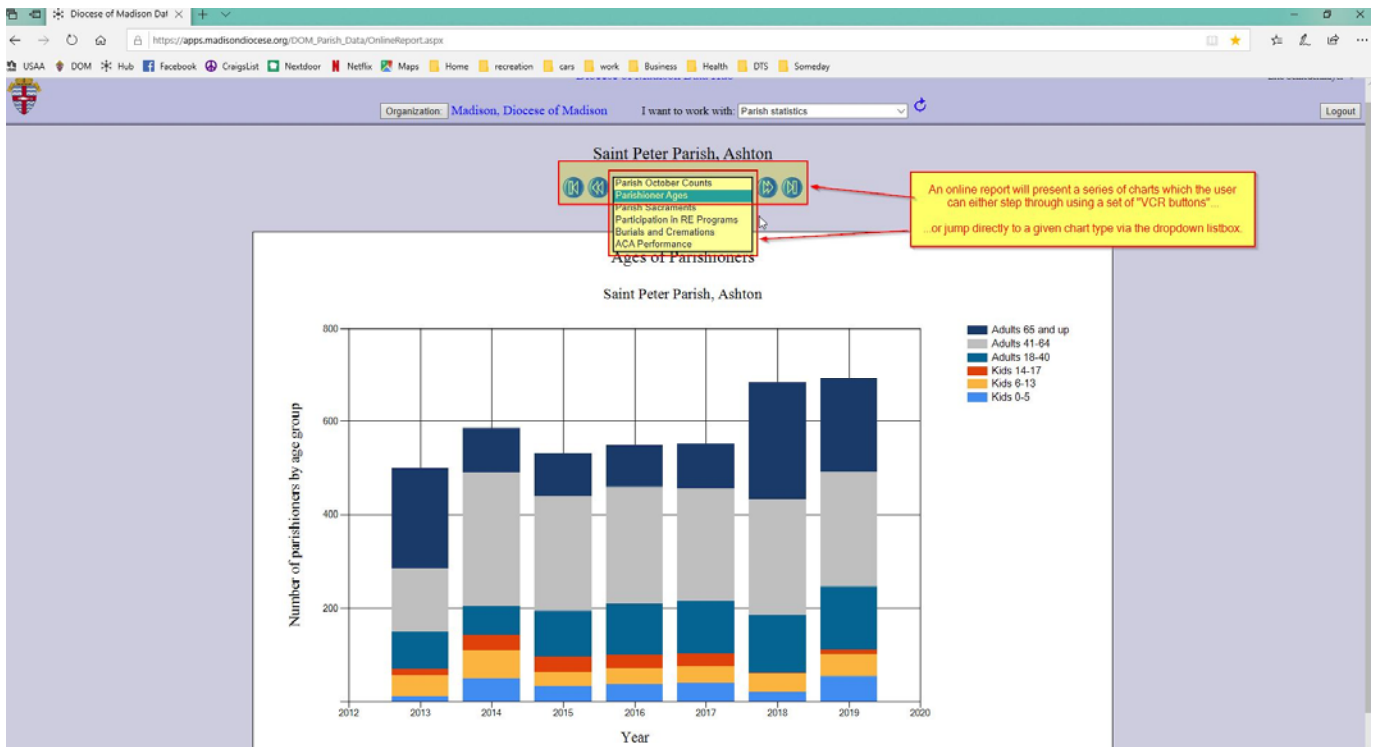
The screenshot shows the Diocese of Madison Data Hub website. The browser address bar displays the URL: [https://apps.madisondioocese.org/DOM\\_Parish\\_Data/parishstatistics.aspx](https://apps.madisondioocese.org/DOM_Parish_Data/parishstatistics.aspx). The page title is "Diocese of Madison Data Hub". The user is logged in as "Eric Schiedermayer".

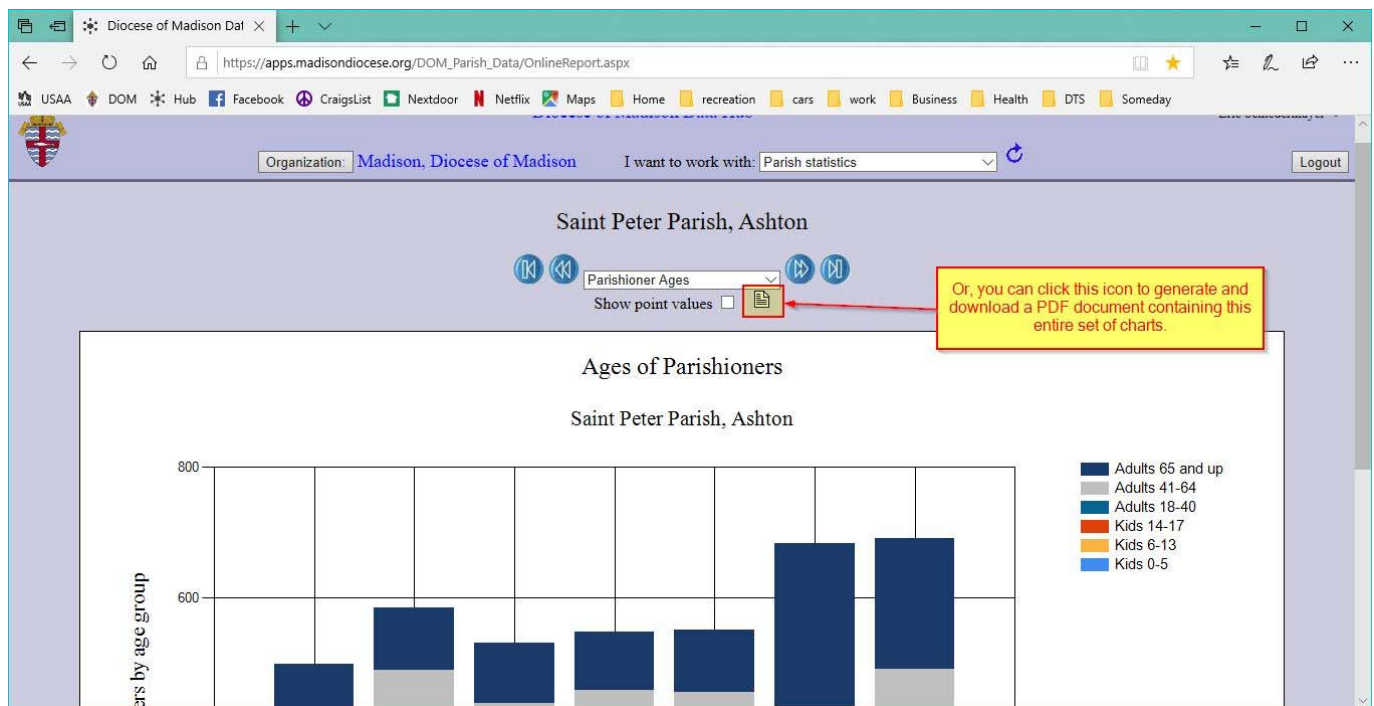
The main content area is titled "Parish Statistics". Below this, it shows "Saint Peter Parish, Ashton - 2019". To the right of the title, there are icons for a bar chart, a document, and a printer. A red box highlights the document icon, and a yellow callout box with a red arrow pointing to it contains the text: "From the parish statistical report, you can click this icon to display an online report containing a 'slideshow' of a series of statistical graphs pertinent to this parish."

Below the title, there is a section titled "Parishioner Counts". To the right of this title, there is a dropdown menu set to "edit Parishioner counts" and a calendar year selector set to "2019".

The "Parishioner Counts" section displays the following data:

| Number of households...                  |     |
|--|-----|
| Married couples where both are Catholics | 165 |
| Mixed religion couples                   | 10  |
| Widowed or single persons                | 100 |
| Total number of households               | 275 |





For assistance, feel free to contact these diocesan staff:

Rebecca Fischer

608-821-3015

Anna Delaney

608-821-3149

Marie Lins

608-821-3160

Eric Schiedermayer

608-821-3168