

DIOCESAN SERVICES FUND IMPACT REPORT 2024

Your Faith and Generosity in Action



TABLE OF CONTENTS

A Note from Archbishop Vásquez . . .	3
Overview of DSF 2024	4
Where Your Gift Goes	5
By the Numbers	7
Parish Rebates	7
2024 Ministry Outcomes	8
Parish Fundraising Efforts	9

“Your generosity and dedication bring Christ’s love to countless people, strengthening our Church and extending His mercy to those in need.”

*- Most Reverend Joe S. Vásquez
Archbishop of Galveston-Houston*

Archdiocese of Galveston-Houston | 1700 San Jacinto St., Houston, TX 77002



A NOTE FROM *Archbishop Vásquez*



Dear Brothers and Sisters in Christ,

With a joyful heart, I embrace this new chapter in my journey of faith, honored to serve as your Archbishop. The Archdiocese of Galveston-Houston is a vibrant community of faith, united in love for Christ and a spirit of generous stewardship. From the moment of my appointment, I have prayed for you and eagerly anticipated walking alongside you—to listen, learn, and serve.

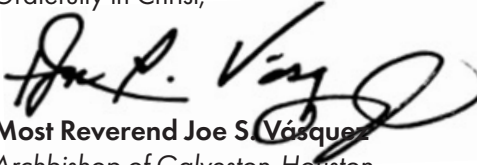
In these first couple months, I have been listening to you – the faithful, visiting parishes, and witnessing the many ways you share your gifts in service to God and one another. Your generosity and dedication bring Christ's love to countless people, strengthening our Church and extending His mercy to those in need. It is truly inspiring!

God has abundantly blessed this local Church, and I am filled with hope for all we will accomplish together. As stewards of His grace, we are called to strengthen our parishes, expand our ministries, and deepen our commitment to one another. The *Diocesan Services Fund* (DSF) plays a vital role in this mission, supporting 64 ministries that serve the poor, form disciples, and proclaim the Gospel.

Your response to Cardinal DiNardo's appeal for support to the DSF over the last 20 years has been extraordinarily generous. I thank him for his commitment to guiding the faithful to respond generously to the needs of our brothers and sisters, and I am confident that we will continue to expand our ability to serve in the future.

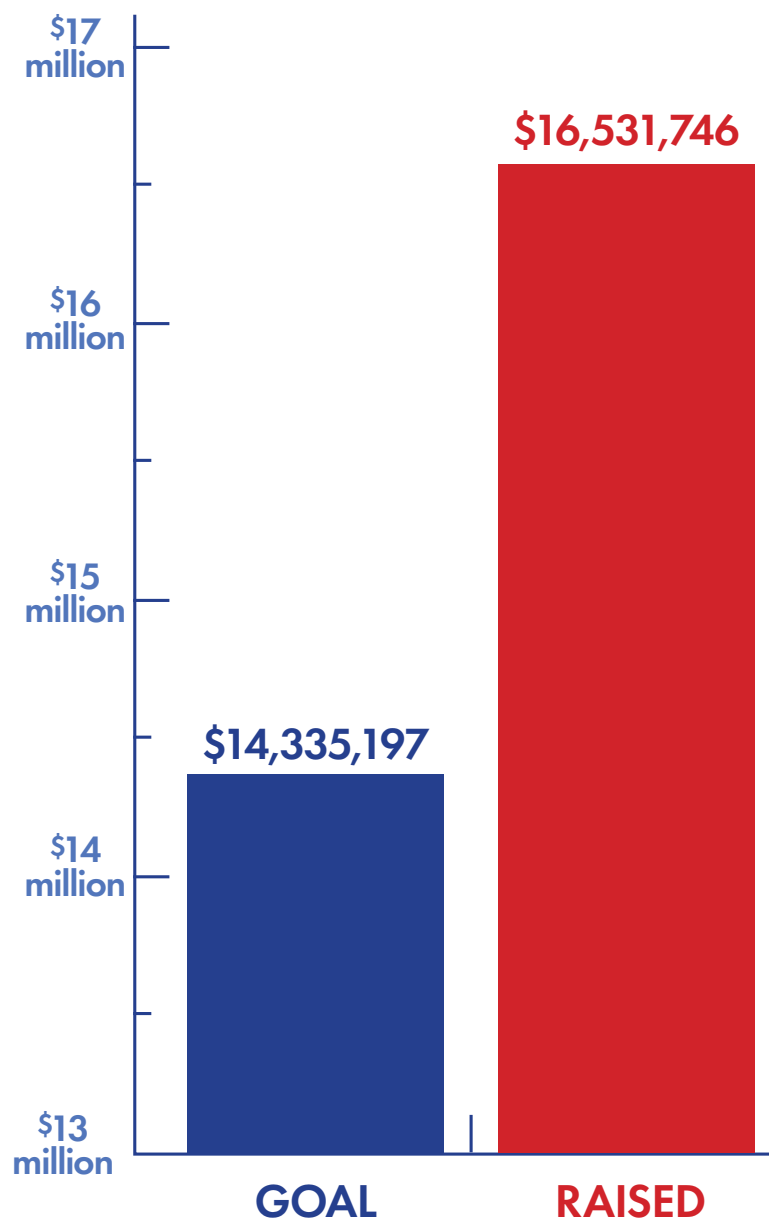
Together, through faith and stewardship, we can continue to build a thriving community that reflects Christ's love. I look forward to getting to know you, praying with you, and serving as your shepherd. Please keep me in your prayers, as you remain in mine. May the Lord bless you and your families abundantly.

Gratefully in Christ,


Most Reverend Joe S. Vásquez
Archbishop of Galveston-Houston



2024 GOAL VS. RAISED*



*\$1.84M raised was returned to parishes through rebates.

THE *Mission* OF DSF

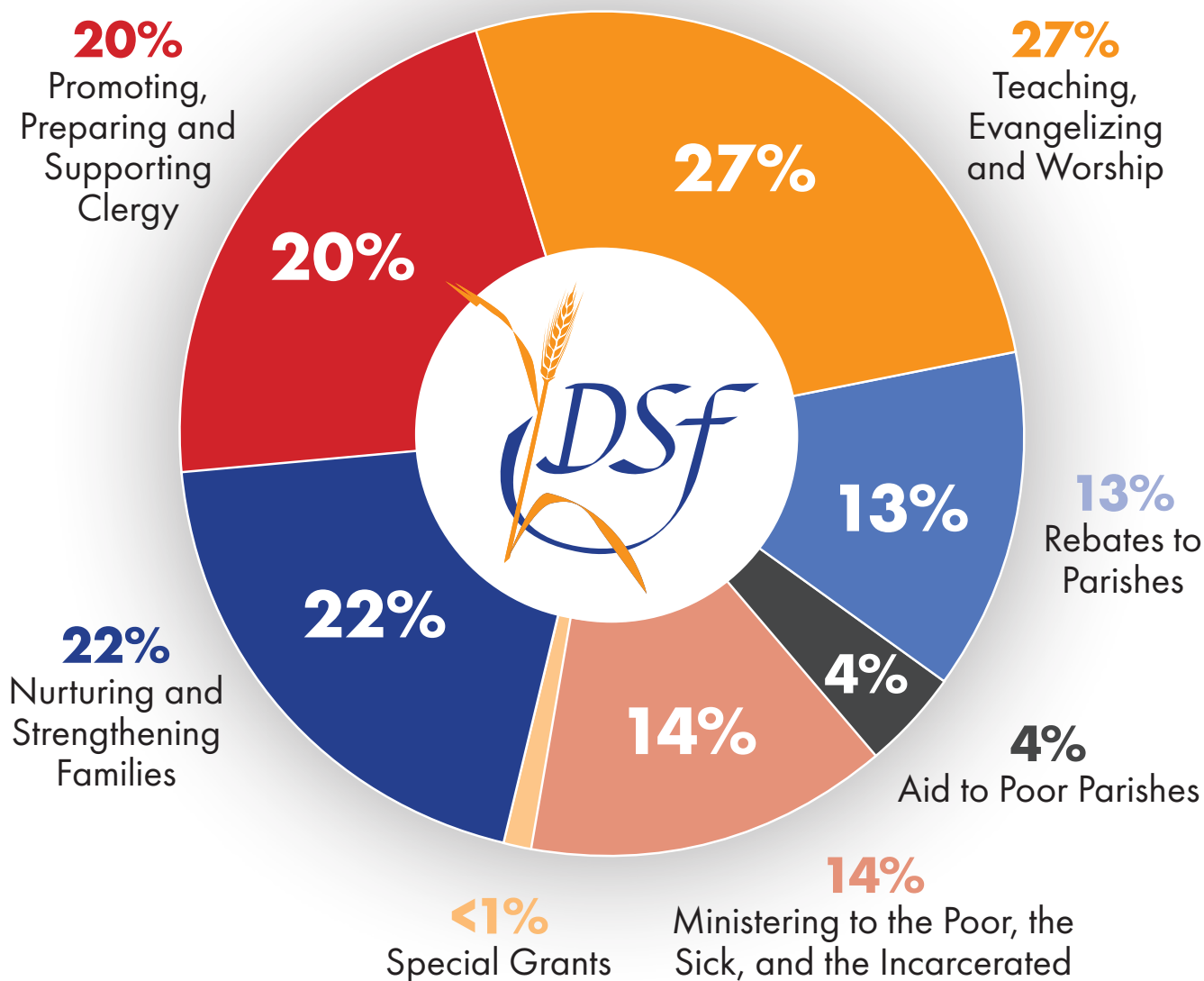
The mission of the Diocesan Services Fund (DSF) is to provide essential support for the 64 ministries that serve those in need throughout the Archdiocese of Galveston-Houston that no one parish can deliver on their own.

DSF supports the formation of our clergy; serves the poor, feeds the hungry, and supports those in need; provides a strong Catholic education to more than 17,500 students; and forms the next generation of Catholics through youth and adult faith formation.

Through DSF, we can serve one another and fully live out the Gospel of Jesus Christ in our thoughts and actions every day.



HOW *DSF Funds* ARE ALLOCATED



"The Catholic schools of the Archdiocese of Galveston-Houston form disciples educated in both faith and intellect. We are committed to the educational mission of the Church, as we prepare students for Heaven, college and career. The support we receive from the Diocesan Services Fund enables our 56 Catholic schools to fulfill that mission, as evident in our graduates who possess characteristics that empower them to live faithfully as disciples of Christ who transform the world! Thank you for your generous support!"

- Mazie S. McCoy, Ed.D.
Secretariat Director and Superintendent of Catholic Schools



Let's look at a hypothetical donation of \$1 and see where it goes.

YOUR GIFT MAKES A *Difference!*

Blessings are magnified when we come together and support DSF.

When we do, we glorify God through the 64 ministries of our local Church that no one parish can deliver on its own. Through your DSF commitment, you also serve the poor, the sick, the homeless, and the forgotten in our community.

Special Grants **<1¢** ↓

27¢

Teaching, Evangelizing & Worship

22¢

Nurturing & Strengthening Families

20¢

Promoting, Preparing & Supporting the Clergy

14¢

Ministering to the Poor, the Sick and the Incarcerated

13¢

Rebates to Parishes

4¢

Aid to Poor Parishes



"DSF makes it possible for the Church to accompany young adults through very formative years when they're making big decisions that will direct the course of their lives. Thanks to DSF, we have 2 priests and 6 lay campus ministers who are serving at 5 secular universities and 3 lay ministers serving post-college young adults (in English and Spanish). These staff members walk with nearly 8,000 young people each year and invite them into a deeper relationship with Christ and his Church."

- Angie Pometto, Director, Office of Young Adult & Campus Ministry







PARISH *Rebates*

This is the total amount returned directly back to parish communities throughout the Archdiocese of Galveston-Houston through DSF rebates.

Through these rebates, numerous parishes throughout the Archdiocese receive money back that allows them to fund social and liturgical ministries, serve their communities, support their schools and conduct much needed maintenance on parish buildings.

A gift to DSF helps to ensure that each parish has the opportunity to receive additional funds to support their community.

DSF 2024: BY THE NUMBERS

Total Amount Raised: \$16,531,746
(115% OF GOAL)

\$1.84M PARISH REBATES

37,027
NUMBER OF DONORS

115
PARISHES OVER GOAL

4,631
NEW DONORS
(13% of all donors)

\$446.48
AVERAGE GIFT



"While not all parishes meet the DSF goal set by the Archbishop, we were blessed to have surpassed that goal last year. After consulting the Finance and Pastoral Councils, we discerned to give the surplus to other parishes we knew were in need. This is not just a kind gesture, but a directive as indicated by Jesus throughout the Gospels. I expect that we at Sacred Heart will continue to be generous in the cases we might have a rebate as a duty of being good stewards of the things given to us by God."

- Fr Nicolas Ramirez
Pastor, Sacred Heart Catholic Church – Conroe



2024 AT A *Glance*

The Diocesan Services Fund (DSF) provides essential funding for 64 ministries that no one parish could deliver on its own. Last year, thanks to the generosity of the faithful of our Archdiocese, we were able to meet the needs of others and support:

Promoting, Preparing and Supporting the Clergy

 **3**
Newly ordained priests

 **15**
Priests at Archbishop
Fiorenza Priest
Retirement Residence

 **53**
Seminarians
from the Archdiocese
of Galveston-Houston

Teaching, Evangelization and Worship

 **18,280**
Catholic school students

 **1,905**
Catholic school
professional staff

 **20,384**
Seafarers from 78
countries served at the
Galveston Seafarers
Center

Ministering to the Poor, the Sick, and Incarcerated

 **20,764**
Prescriptions
distributed at
San José's
pharmacy

 **31**
Hospitals served
by the Catholic
Chaplain Corps

 **358,834**
Food pantry visits by
families in need to
Catholic Charities

 **More than 150**
correctional ministry
volunteers



In February 2025, the archdiocese welcomed 40 newly ordained Permanent Deacons. This is possible through the contributions we receive through the Diocesan Services Fund, which allow us to carry out our mission:

"Through the guidance of the Holy Spirit, help form men to be the best deacons God has called them to be."

- Deacon Phillip Jackson
Director of the Permanent
Diaconate

PARISH PERFORMANCE FOR DSF24

PARISH NAME	# OF HOUSEHOLDS	# OF DONORS	TOTAL PARTICIPATION (%)	PARISH GOAL (\$)	TOTAL RAISED (\$)	PARISH GOAL MET (%)
All Saints - Houston	2,794	136	5%	\$67,800	\$88,666	131%
Annunciation - Houston	383	66	17%	\$53,000	\$39,422	74%
Ascension Chinese Mission - Alief	250	50	20%	\$20,500	\$16,080	78%
Assumption - Houston	4,550	115	3%	\$65,000	\$45,656	70%
Blessed Sacrament - Houston	250	87	35%	\$24,800	\$25,375	102%
Catholic Charismatic Center- Houston	364	42	12%	\$31,200	\$20,559	66%
Christ Our Light - Navasota	736	55	7%	\$27,900	\$29,235	105%
Christ The Good Shepherd - Spring	3,293	393	12%	\$235,400	\$312,548	133%
Christ The Incarnate Word - Houston	1,598	737	46%	\$104,000	\$129,615	125%
Christ The King - Houston	357	83	23%	\$57,000	\$59,406	104%
Christ The Redeemer - Houston	7,581	844	11%	\$353,000	\$402,265	114%
Co-Cathedral of the Sacred Heart - Houston	850	237	28%	\$150,000	\$160,401	107%
Corpus Christi - Houston	1,471	176	12%	\$76,000	\$103,807	137%
Epiphany of the Lord - Katy	7,029	470	7%	\$264,000	\$343,334	130%
Guardian Angel - Wallis	535	100	19%	\$35,500	\$40,580	114%
Holy Family - Galveston	1,964	282	14%	\$95,000	\$110,487	116%
Holy Family - McNair/Baytown	275	79	29%	\$20,300	\$21,100	104%
Holy Family - Missouri City	3,199	444	14%	\$143,000	\$155,002	108%
Holy Ghost - Houston	2,082	153	7%	\$73,500	\$85,578	116%
Holy Name - Houston	510	44	9%	\$25,000	\$26,892	108%
Holy Rosary - Houston	2,097	103	5%	\$130,000	\$141,203	109%
Holy Rosary - Rosenberg	876	153	17%	\$76,100	\$49,285	65%
Immaculate Conception - Houston	510	103	20%	\$38,000	\$38,934	102%
Immaculate Conception - Sealy	880	204	23%	\$48,300	\$51,781	107%
Immaculate Conception Mission - Bellville	132	53	40%	\$9,700	\$17,197	177%
Immaculate Heart of Mary - Houston	725	162	22%	\$39,000	\$36,938	95%
La Divina Providencia - Houston	0	5	-	\$0	\$435	-
Mary Queen - Friendswood	2,545	401	16%	\$195,000	\$217,426	112%
Most Holy Trinity - Angleton	1,363	110	8%	\$75,000	\$56,145	75%
Notre Dame - Houston	3,789	262	7%	\$1,082	\$65,163	60%
Our Lady of Czestochowa - Houston	375	68	18%	\$24,800	\$22,604	91%
Our Lady of Fatima - Galena Park	681	303	44%	\$31,000	\$31,402	101%
Notre Dame - Houston	3,789	262	7%	\$1,082	\$65,163	60%
Our Lady of Czestochowa - Houston	375	68	18%	\$24,800	\$22,604	91%
Our Lady of Fatima - Galena Park	681	303	44%	\$31,000	\$31,402	101%
Our Lady of Grace - South Houston	501	314	63%	\$19,400	\$26,262	135%
Our Lady of Guadalupe - Baytown	681	549	81%	\$55,000	\$59,088	107%
Our Lady of Guadalupe - Houston	700	144	21%	\$43,000	\$43,509	101%
Our Lady of Guadalupe - Rosenberg	2,062	417	20%	\$43,600	\$43,976	101%



PARISH NAME	# OF HOUSEHOLDS	# OF DONORS	TOTAL PARTICIPATION (%)	PARISH GOAL (\$)	TOTAL RAISED (\$)	PARISH GOAL MET (%)
Our Lady of Lavang - Houston	3,202	117	4%	\$66,700	\$69,000	103%
Our Lady of Lourdes - Hitchcock	1,373	144	10%	\$55,000	\$55,000	100%
Our Lady of Mount Carmel - Houston	1,306	86	7%	\$37,700	\$20,076	53%
Our Lady Star of the Sea - Houston	230	44	19%	\$9,700	\$7,016	72%
Our Lady of Perpetual Help - Sweeny-DSF20	134	24	18%	\$4,300	\$9,735	226%
Our Lady of Sorrows - Houston	663	40	6%	\$10,800	\$12,287	114%
Our Lady of St. John - Houston	321	74	23%	\$34,000	\$41,228	121%
Our Mother of Mercy - Houston	1,223	175	14%	\$73,000	\$56,880	78%
Prince of Peace - Houston	8,113	779	10%	\$500,000	\$477,125	95%
Queen of Peace - Houston	1,717	47	3%	\$56,000	\$56,455	101%
Queen of Peace - La Marque	257	110	43%	\$24,800	\$41,136	166%
Regina Caeli - Houston	538	46	9%	\$18,000	\$19,591	109%
Resurrection - Houston	830	212	26%	\$29,100	\$30,418	105%
Sacred Heart - Conroe	7,034	1,098	16%	\$220,000	\$263,837	120%
Sacred Heart - Crosby	871	116	13%	\$40,000	\$39,857	99%
Sacred Heart - Pattison	350	120	34%	\$14,500	\$14,662	101%
Sacred Heart of Jesus - Manvel	4,105	272	7%	\$114,000	\$124,038	109%
Sacred Heart - Richmond	1,088	299	27%	\$149,900	\$145,042	97%
Shrine of the True Cross - Dickinson	1,074	297	28%	\$94,000	\$88,114	94%
St. Albert of Trapani - Houston	1,464	150	10%	\$84,000	\$98,953	118%
St. Alphonsus - Houston	456	29	6%	\$11,000	\$11,580	105%
St. Ambrose - Houston	1,252	147	12%	\$82,000	\$54,879	67%
St. Andrew - Channelview	1,358	277	20%	\$76,000	\$50,872	67%
St. Andrew Kim - Houston	445	111	25%	\$27,000	\$42,055	156%
St. Angela Merici - Missouri City	2,163	230	11%	\$53,800	\$69,472	129%
St. Anne - Houston	3,987	489	12%	\$294,400	\$389,018	132%
St. Anne de Beaupre - Houston	161	27	17%	\$6,400	\$8,565	134%
St. Anne - Tomball	2,828	189	7%	\$105,000	\$78,344	75%
St. Anthony de Padua - Danbury	225	68	30%	\$24,500	\$26,595	109%
St. Anthony of Padua - The Woodlands	7,057	586	8%	\$395,000	\$521,013	132%
St. Augustine - Houston	443	69	16%	\$27,400	\$31,921	117%
St. Bartholomew the Apostle - Katy	6,865	854	12%	\$190,000	\$236,215	124%
St. Benedict the Abbott - Houston	1779	104	6%	\$38,000	\$34,362	90%
St. Bernadette Soubirous - Houston	2,482	309	12%	\$151,000	\$172,013	114%
St. Catherine of Siena - Houston	904	112	12%	\$65,000	\$54,783	84%
St. Cecilia - Houston	3,984	708	18%	\$353,000	\$392,603	111%
St. Charles Borromeo - Houston	2,200	1,063	48%	\$81,000	\$99,310	123%
St. Christopher - Houston	455	112	25%	\$54,900	\$38,896	71%
St. Clare of Assisi - Houston	1,370	328	24%	\$157,000	\$210,522	134%
St. Cyril of Alexandria - Houston	5,673	374	7%	\$129,100	\$144,155	112%
St. Dominic - Houston	3,350	212	6%	\$34,400	\$36,149	105%
St. Edith Stein - Katy	3,258	304	9%	\$140,500	\$159,712	114%



PARISH NAME	# OF HOUSEHOLDS	# OF DONORS	TOTAL PARTICIPATION (%)	PARISH GOAL (\$)	TOTAL RAISED (\$)	PARISH GOAL MET (%)
St. Edward - Spring	3,568	270	8%	\$142,300	\$184,437	130%
St. Elizabeth Ann Seton - Houston	9,288	478	5%	\$232,400	\$242,285	104%
St. Faustina - Fulshear	5,560	307	6%	\$176,000	\$187,363	106%
St. Francis de Sales - Houston	1,435	445	31%	\$127,400	\$129,563	102%
St. Francis of Assisi - Houston	363	87	24%	\$24,000	\$26,141	109%
St. Frances Cabrini - Houston	4,845	269	6%	\$74,000	\$66,706	90%
St. Francis Xavier - Houston	876	168	19%	\$69,500	\$52,673	76%
St. Gregory the Great - Houston	360	50	14%	\$14,700	\$16,761	114%
St. Helen - Pearland	3,885	512	13%	\$230,200	\$253,612	110%
St. Hyacinth - Deer Park	1,696	216	13%	\$81,200	\$89,323	110%
St. Ignatius Loyola - Spring	4,626	634	14%	\$329,197	\$367,603	112%
St. James the Apostle - Spring	2,336	207	9%	\$81,700	\$88,829	109%
St. Jerome - Clute	266	74	28%	\$26,900	\$32,830	122%
St. Jerome - Houston	2,624	331	13%	\$135,000	\$122,746	91%
St. Joseph Mission - Plantersville	149	40	27%	\$11,900	\$9,720	82%
St. John Fisher - Richmond	753	109	14%	\$39,000	\$40,085	103%
St. John Neumann - Houston	1,376	213	15%	\$71,000	\$78,366	110%
St. John of the Cross - New Caney	1,800	61	3%	\$35,400	\$47,508	134%
St. John the Apostle Mission - West Columbia/Sweeny	134	29	22%	\$3,300	\$6,975	211%
St. John the Baptist - Alvin	2,814	190	7%	\$72,000	\$72,000	100%
St. John the Evangelist - Baytown	868	126	15%	\$33,000	\$52,029	158%
St. John Vianney - Houston	4,891	1,153	24%	\$510,000	\$858,011	168%
St. Joseph - Baytown	322	75	23%	\$27,000	\$28,329	105%
St. Joseph - Houston	1,254	173	14%	\$30,100	\$50,814	169%
St. Joseph - New Waverly	1,391	95	7%	\$20,500	\$21,834	107%
St. Joseph on the Brazos - Brazoria	558	24	4%	\$22,600	\$23,408	104%
St. Juan Diego - Pasadena	5,800	95	20%	\$57,000	\$68,588	120%
St. Jude Thaddeus - Highlands	250	52	21%	\$17,100	\$18,596	109%
St. Justin Martyr - Houston	1,898	383	20%	\$93,200	\$110,393	118%
St. Katharine Drexel - Hempstead	739	164	22%	\$66,000	\$65,127	99%
St. Laurence - Sugar Land	7,935	989	12%	\$530,000	\$609,315	115%
St. Leo The Great - Houston	2,200	500	23%	\$58,000	\$60,457	104%
St. Luke the Evangelist - Houston	1,039	434	42%	\$148,700	\$159,704	107%
St. Mark the Evangelist - Houston	1,375	292	21%	\$42,000	\$52,644	125%
St. Martha - Kingwood	7,750	710	9%	\$360,000	\$492,765	137%
St. Martin de Porres - Barrett Station	278	71	26%	\$20,700	\$18,403	89%
St. Mary - Frydek/Sealy	335	71	21%	\$17,400	\$18,748	108%
St. Mary - La Porte	1,118	116	10%	\$54,000	\$51,865	96%
St. Mary - League City	5,068	378	7%	\$175,000	\$187,389	107%
St. Mary Magdalene - Humble	7,953	360	5%	\$151,100	\$150,840	99%

PARISH NAME	# OF HOUSEHOLDS	# OF DONORS	TOTAL PARTICIPATION (%)	PARISH GOAL (\$)	TOTAL RAISED (\$)	PARISH GOAL MET (%)
St. Mary - Plantersville	1,489	374	25%	\$107,500	\$165,533	154%
St. Mary of the Miraculous Medal - Texas City	1,859	175	9%	\$64,600	\$48,033	74%
St. Mary of the Purification - Houston	931	174	19%	\$60,000	\$79,454	132%
St. Mary Star of the Sea - Freeport	450	82	18%	\$25,300	\$28,947	114%
St. Matthew the Evangelist - Houston	1,225	165	13%	\$56,600	\$63,615	112%
St. Matthias the Apostle - Magnolia	2,457	206	8%	\$77,000	\$90,960	118%
St. Maximilian Kolbe - Houston	2,218	409	18%	\$155,000	\$183,894	119%
St. Michael - Houston	3,658	447	12%	\$359,000	\$430,372	120%
St. Michael - Lake Jackson	1,291	199	15%	\$96,000	\$103,430	108%
St. Michael the Archangel - Needville	765	113	15%	\$33,000	\$35,694	108%
St. Monica - Houston	363	286	79%	\$50,600	\$59,237	117%
St. Paul - Houston	1,712	257	15%	\$149,700	\$159,822	107%
St. Peter Claver - Houston	287	46	16%	\$11,900	\$23,144	194%
St. Peter the Apostle - Houston	85	55	65%	\$22,600	\$14,432	64%
St. Philip Neri - Houston	192	57	30%	\$21,500	\$22,843	106%
St. Philip of Jesus - Houston	1,020	440	43%	\$35,400	\$38,015	107%
St. Philip the Apostle - Huffman	234	105	45%	\$34,100	\$51,490	151%
St. Pius V - Pasadena	2,218	123	6%	\$47,500	\$47,147	99%
St. Raphael the Archangel - Houston	1,837	35	2%	\$35,500	\$32,122	90%
St. Rose of Lima - Houston	2,262	241	11%	\$110,000	\$113,807	103%
St. Stanislaus - Anderson	412	60	15%	\$25,800	\$20,105	78%
St. Stephen - Houston	243	45	19%	\$3,300	\$3,630	110%
St. Stephen the Martyr Mission - Pt Blank	155	28	18%	\$4,000	\$19,431	486%
St. Theresa - Houston	3,354	317	9%	\$145,000	\$205,451	142%
St. Theresa - Sugar Land	3,250	372	11%	\$186,000	\$197,961	106%
St. Thomas Aquinas - Sugar Land	820	263	32%	\$83,000	\$104,183	126%
St. Thomas More - Houston	4,484	355	8%	\$133,000	\$202,317	152%
St. Thomas the Apostle - Huntsville	1,734	116	7%	\$45,200	\$49,885	110%
St. Vincent de Paul - Houston	3,708	461	12%	\$279,000	\$432,846	155%
St. Wenceslaus Mission - Rosenberg	96	17	18%	\$3,000	\$5,390	180%
Sts. Cyril and Methodius - Damon	119	33	28%	\$6,500	\$8,115	125%
Sts. Peter and Paul - Bellville	418	139	33%	\$31,200	\$36,218	116%
Sts. Simon & Jude - The Woodlands	4,891	376	8%	\$235,000	\$246,796	105%
Vietnamese Martyrs - Houston	1,500	323	22%	\$86,000	\$96,851	113%
Newman Centers/Chapels	0	27	-	\$0	\$10,872	-
Office of the Archbishop - Houston	0	1	-	\$0	\$ 151,661	-
TOTAL:	299,134	37,027	12%	\$ 14,335,197	\$ 16,531,746	

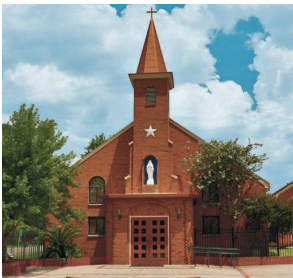
AID TO POOR *Parishes*



St. Jerome Catholic Community – Houston

8825 Kempwood Dr.
Houston, TX 77080
County: Harris
Aid Amount: \$45,243

PURPOSE:
Used to purchase an A/C Unit



Our Lady of Sorrows Catholics Church – Houston

3006 Kashmere St.
Houston, TX 77026
County: Harris
Aid Amount: \$30,000

PURPOSE:
Used to purchase an A/C Unit

St. Joseph Catholic Church – Baytown

1907 Carolina St
Baytown, TX 77520
County: Harris
Aid Amount: \$750,000

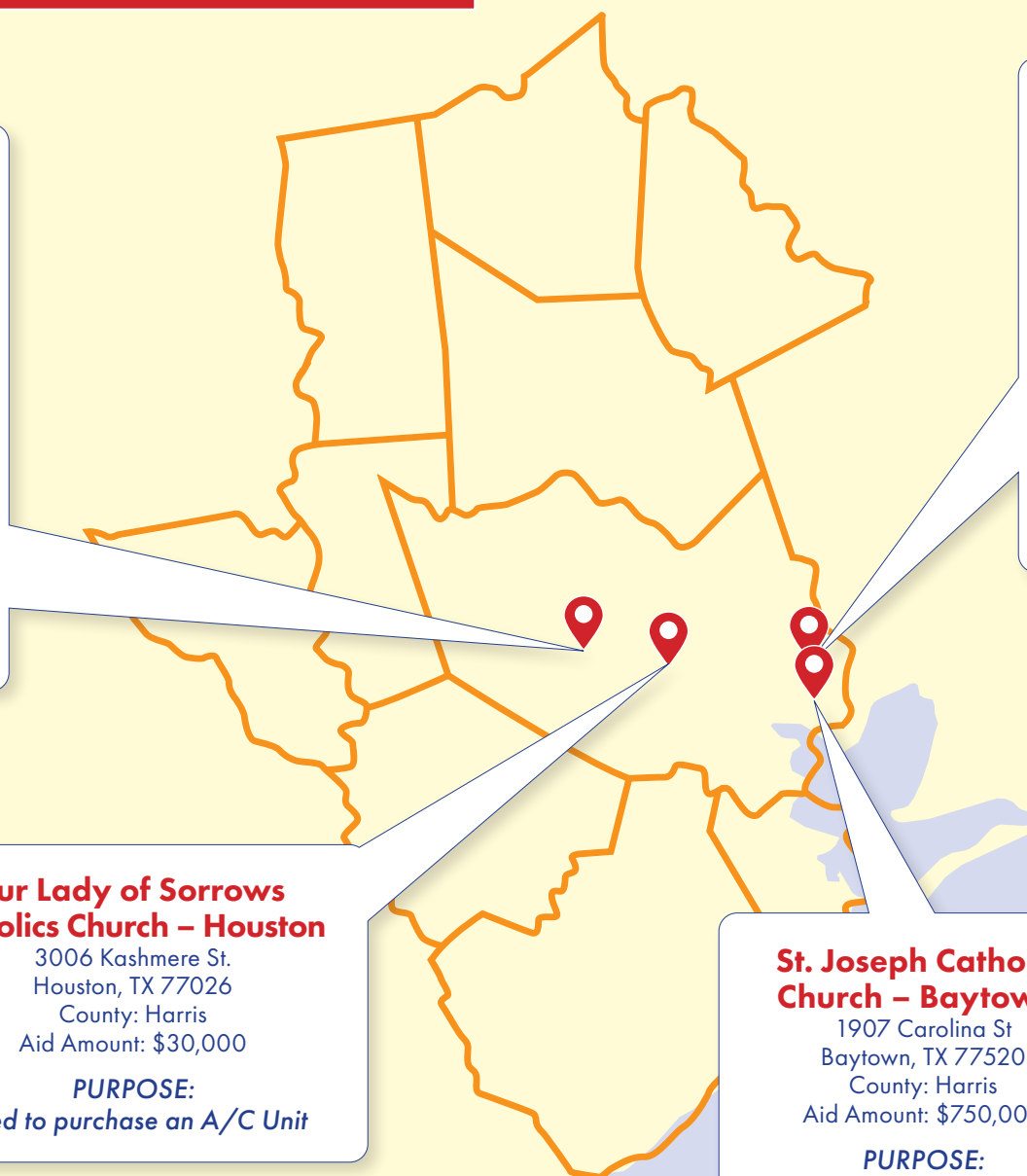
PURPOSE:
Chiller & Renovations



Holy Family Catholic Church – McNair

7122 Whiting Rock
McNair, TX 77521
County: Harris
Aid Amount: \$45,000

PURPOSE:
Used to purchase an A/C Unit





THE ARCHDIOCESE OF
GALVESTON-HOUSTON

1700 San Jacinto
Houston, TX 77002

WAYS TO GIVE: Give online at archgh.org/dsfimpact or scan here to give

