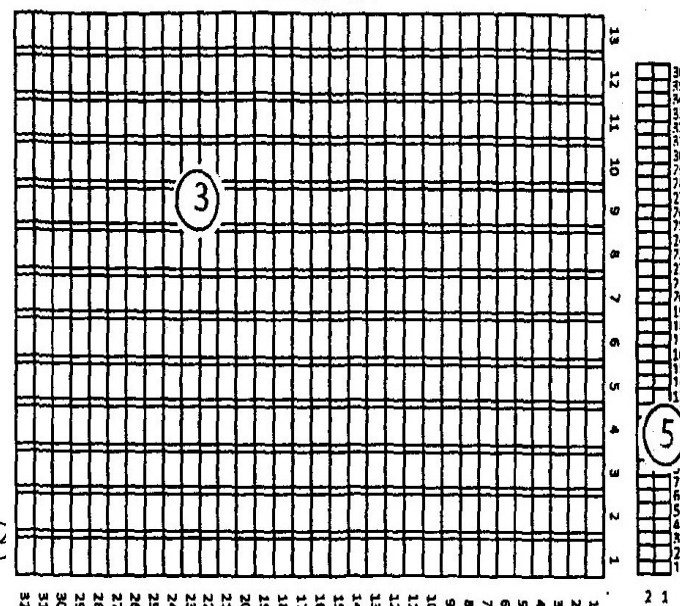
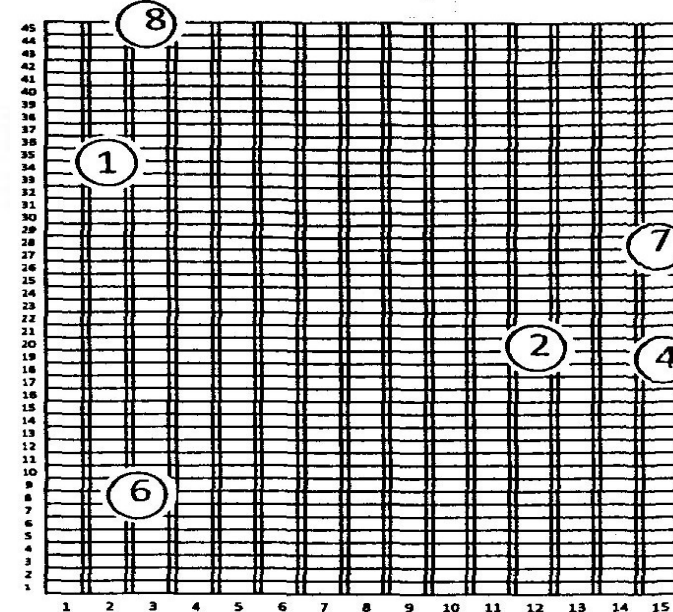


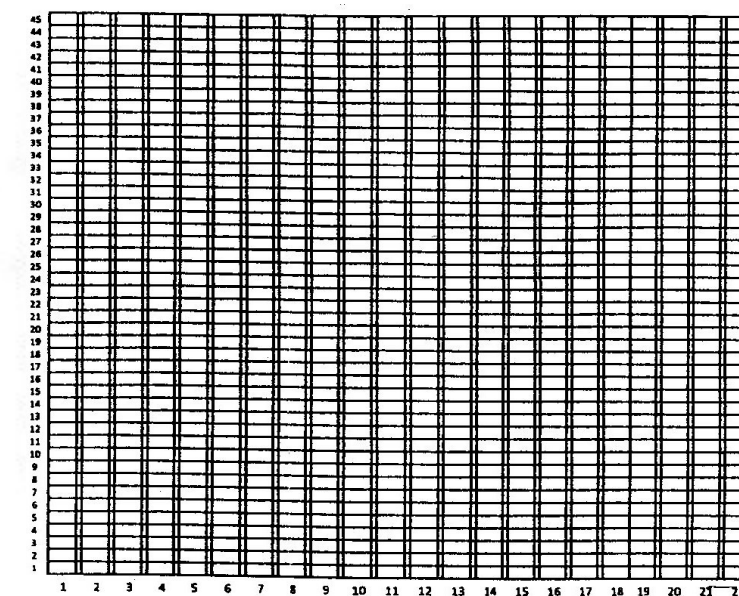
Section C



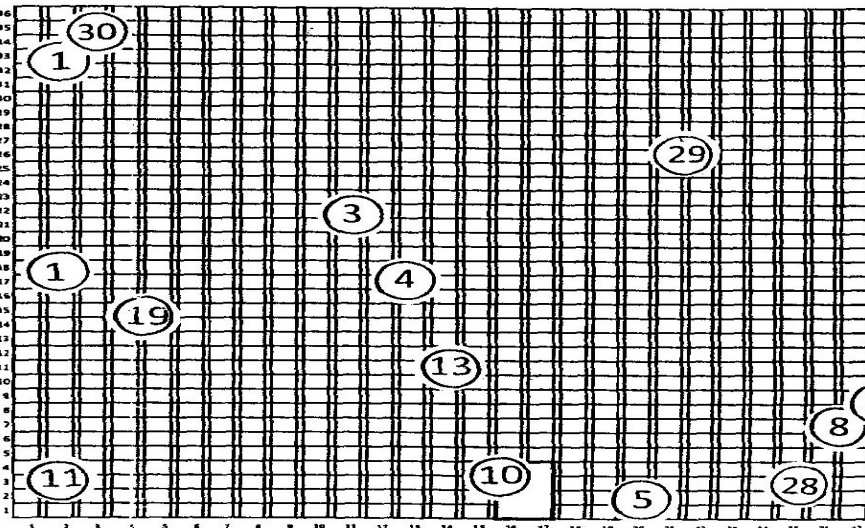
Section D



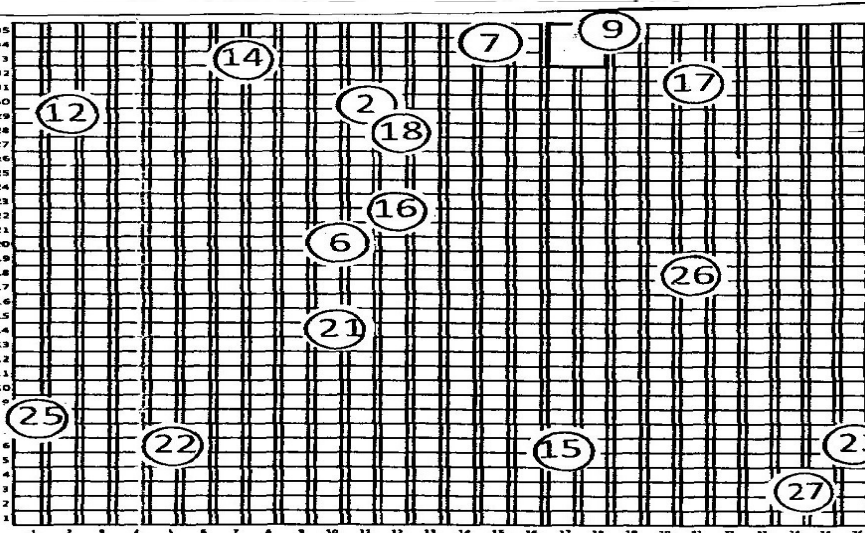
Section E



Section B



Section A



# Mount Calvary Cemetery

Sponsored by Central Montana Genealogy Society

## Founding of Mt Calvary Cemetery

Early Metis settlers Antione and Angelique Ouellette lost a daughter to death in 1891.

They deeded this land to the Bishop of Helena – the beginning of Mount Calvary Catholic Cemetery.

There are not about 4800 graves and many have no headstones but small depressions remind us of an unmarked burial.

Over the years there has been some vandalism and some monuments were stolen or removed.

The records of this cemetery are like most – not complete nor perfect.

The names inscribed here represent many of the nationalities of our world. There are a number of well known families who were engaged in business, education, farming and ranching.

### Notes about the Metis burials in Section B

As founders of Lewistown, the Metis people settled along the creeks and began burying their dead at a place that became the JW Corbly ranch. In 1893 seventy-two bodies were reinterred – twenty-four were named.

No monument nor map exists. The two mass graves are probably marked the dark granite edge stones at B-1-14 to 17 & B-1-30 to 35 along the western edge. Many Metis names appear in the same NW part of Sec. B.

## Sections A & B - the Original Cemetery

### The Metis Burials of 1893

- 1 Two large graves - row 1 of Section B

### Names in History

- 2 Francis & Virginia Janeaux - first merchant
- 3 Mose LeTray - build log post office at Reedsfort
- 4 Ben Kline - early Metis settler
- 5 Richard Baker - early blacksmith
- 6 Christ & Cresentia King - early ranchers
- 27 Daniel A Meagher, cousin of Thomas F Meagher LT Gov of Montana Territory

### Catholic Ministers

- 7 Nuns/sisters of the St. Leo's School
- 8 Priests of St. Leo's Church

### Interesting Monuments

- 9 Burke Mausoleum - 'Pick-handle Burke' donated to St. Leo's school
- 10 Henry & Fannie Brooks Mausoleum donated land for St. Leo's church
- 11 Cast Concrete 'tree trunk' monuments
- 12 Pipe cross and vault cover
- 13 Clyde Tripp - beautifully carved stone
- 14 2 Sandstone monuments with white cross inserts work of the famous Croatian stonemasons
- 15 'In F.L. T.' is Odd Fellows on Ottopal stone
- 16 "Woodman of the World" stone - Wuttwer
- 17 Largest cross - Hruska
- 18 Great carving of cross and lilies - Murray
- 19 Old stones set in concrete - NW Sec B
- 20 Tree trunk monument
- 21 Tree trunk monument with cross

### Interesting Stories

- 22 Edward Supernant - retired from military after the battle of the Big Hole - died at Poor Farm

- 23 Anthony "Tony" Deutsch - famous boxer

### Dedicated Monuments

- 24 Sacredness of Human Life

### Military Head stones

- 25 Thomas McNally
- 26 Zachary Tresch - Confederate
- 28 Frank J Day

### Unknown grave

- 29 black granite plinth
- 30 Croatian carved stone

## Sections C - D - E –center of the cemetery

When sections A & B were established, a 'pauper's field' was placed here in Section C. In time these north-facing lots were sited and Babyland began in 1949. Section D began in early 1940's and was nearly full by 1970. Section E was dedicated with flat headstones and upright stones may now be placed at row 13 and beyond.

### Names in History

- 1 The Crowley Family
- 2 Dr. Gans
- 3 John Sculichetti
- 4 Alex Fah

### Babyland graves

- 5 40 graves at east side of Sec C - along the road

### Interesting Monuments

- 6 Nora Daniels - example of lectern headstone
- 7 Thos Burris stone - one of the first 'artist/picture' stones

### Dedicated Monuments

- 8 Memory of unknown soldiers buried in foreign lands  
MIA/POWs

## Section F – north part of the cemetery

Begun just a few years ago, this section has a number of modern or contemporary monuments.

This section also includes the current practice of military stones at the foot of a grave or placing the cremains of other family members in the same lot.

### Common Gravestone Symbols

Alpha & omega – Greek letters for 'beginning in end'

Anchor – hope or eternal life

Arch – passage to heaven

Beehive – industry & faith

Boat – voyage or crossing

Broken chain – loss in a family

Butterfly – resurrection

Clasped hands – farewell to life

Broken column – mortality

Crown – triumph over death

Dog – loyalty or vigilance

Drapery – mourning

Fallen tree – mortality or death

Flame or torch – eternal life

Gate – passage to heaven

Harp – praise to God

Ivy – friendship

Lamb – innocence

Lion – strength

Palm tree or frond – victory

Rabbit – humility or gentleness

Rose – beauty

Shell – baptism or rebirth

Star – creation

Tree stump – life cut short

Angel – guide to heaven

Arrow – mortality/martyrdom

Bird – peace or messenger of God

Broken branch – premature death

Broken wheel – end of life

Circle – eternal life

Clock – mortality or passage of time

Corn – rebirth or fertility

Daisy – childhood innocence

Dogwood – resurrection

Easter lily – purity, chastity

Fern – humility and sincerity

Garland – Victory in death

Hand pointing up – point to heaven

Hourglass – passage of time

Knot – marriage and unity

Lamp or Owl – wisdom or faithfulness

Oak leaf – ongevity

Poppy – eternal sleep

Rooster – awakening

Scythe – reaping of life

Ship – weather a storm against odds

Sunflower – devotion to God

Urn – the soul      Wreath – victory in death