

# SAINT LAWRENCE MARTYR CATHOLIC CHURCH

WELCOME



WORSHIP



SERVICE



MAIN CAMPUS AND MAILING ADDRESS: 7850 Parkside Boulevard, Hanover, Maryland 21076

Historic Church: 2815 Jessup Road, Jessup, Maryland 20794

WWW.SAINTLAWRENCEMARTYR.ORG | OFFICE@SAINTLAWRENCEMARTYR.ORG | PHONE: 410-799-1970 | FAX: 410-799-1134

## SUMMER PARISH OPERATIONS DURING COVID-19:

Monday, Wednesday, Friday: 10:00 a.m. to 2:00 p.m.

## MASS SCHEDULE (all Masses are at the Main Campus):

Monday - Friday at 9:00 a.m.

Saturday Vigil Mass at 5:00 p.m. (also streamed live on the parish Facebook page and parish website)

Sunday: 10:00 a.m.

## HOLY DAYS OF OBLIGATION:

Masses for Holy Days will be announced in the bulletin, on the parish website, and on the parish Facebook page.

**BULLETIN DEADLINE:** Mondays by noon, two weeks prior to inclusion. Please submit items to [bulletin@saintlawrencemartyr.org](mailto:bulletin@saintlawrencemartyr.org).

## OUR CLERGY:

Fr Victor Scocco, O.S.S.T., Pastor

[pastor@saintlawrencemartyr.org](mailto:pastor@saintlawrencemartyr.org), 410-799-1970, x. 51

Deacon Steve Sarnecki, Permanent Deacon

[deacons@saintlawrencemartyr.org](mailto:deacons@saintlawrencemartyr.org), 410-799-1970, x. 57

## OUR PARISH STAFF:

Mrs. Celia (Sally) Rico, Coordinator for Religious Education  
[cre@saintlawrencemartyr.org](mailto:cre@saintlawrencemartyr.org), 410-799-1970, x. 54

Mrs. Teresa Ogden, Virtus Coordinator  
[standcoordinator@saintlawrencemartyr.org](mailto:standcoordinator@saintlawrencemartyr.org), 410-799-1970

Mrs. Kathleen Leddy, Accountant  
[kledy@saintlawrencemartyr.org](mailto:kledy@saintlawrencemartyr.org), 410-799-1970, x. 53

Mr. Michael Levesque, Facilities Manager  
[maintenance@saintlawrencemartyr.org](mailto:maintenance@saintlawrencemartyr.org), 410-799-1970, x. 56

Mr. Clark Gaughan, Business Manager  
[businessmgr@saintlawrencemartyr.org](mailto:businessmgr@saintlawrencemartyr.org), 410-799-1970, x. 55

## PARISH PASTORAL COUNCIL:

Chair:	Donna Ford	410-674-2887
Vice-Chair:	Dione Meinhardt	410-799-1970
Secretary:	Nina Huff	410-799-1970

## RECONCILIATION:

Saturday - 4:00 p.m. to 4:45 p.m. or by appointment

## DEVOTIONS

(at the Main Campus unless announced otherwise):

*Eucharistic Adoration:* Wednesdays, 7:00 p.m. to 9:00 p.m.

*Morning Prayer* - Monday through Friday at 8:30 a.m.

*The Holy Rosary* - prayed immediately after Daily Mass

*The Divine Mercy Chaplet and First Friday Adoration* are temporarily suspended during COVID-19.

The Parkside Campus is open for private prayer Mondays, Wednesdays, and Fridays from 10:00 a.m. to 2:00 p.m.

## SACRAMENTS

**Baptism:** Parishioners who are expecting a child are encouraged to make arrangements prior to the child's birth by contacting the Parish Office. Adults desiring baptism or other Sacraments of Initiation may contact Mr. Jim Leddy at the parish by calling 410-799-1970 or by email to [adultfaith@saintlawrencemartyr.org](mailto:adultfaith@saintlawrencemartyr.org). Preparation sessions are required.

**Marriage:** Couples should contact the parish priest or deacon at least six (6) months prior to the planned wedding. Pre-marriage instruction is required.

**Anointing of the Sick:** Call the Parish Office before surgery, when a serious diagnosis is received, or at advanced age. A parishioner who is homebound, in the hospital, or in a care facility and wishes to receive a visit or a sacrament can call the Parish Office at 410-799-1970, ext. 50 to let us know of their illness and request a visit.

## WE WELCOME NEW PARISHIONERS!

Saint Lawrence Martyr has a 150-year history of being a warm and welcoming faith community. All Catholics who attend Mass at our parish should register in order for us to welcome you fully into our family of faith. Individuals and families can easily register online at [www.saintlawrencemartyr.org](http://www.saintlawrencemartyr.org), or you may choose to obtain a Registration Card from an usher or greeter (cards may be returned in the offertory basket on weekends, or to the Parish Office during normal business hours). Once registered, we will mail to you a welcome packet with more information about your new parish.

**AUGUST 16, 2020**  
**Twentieth Sunday in Ordinary Time**

**Mt 15:21-28**

*“O woman, great is your faith!”*



**QUICK LINKS:**

- [Contact the Parish Office](#)
- [New to the parish? Click here to join us!](#)
- [View the Sunday Vigil Mass](#)
- [Readings for Sunday Mass](#)
- [Please continue to financially support StLM](#)
- [Health of the Sick Prayer List](#)
- [NEW: In Memoriam at Saint Lawrence Martyr](#)

**IMPORTANT: for everyone's health**

At this time and for the foreseeable future, clergy, parish staff, parishioners, volunteers, vendors, and visitors **MUST** wear some sort of facial covering upon exiting their vehicle to enter parish buildings. Facial coverings must continuously be worn while in parish buildings and when exiting buildings and only removed once reaching your vehicle to leave our campus. This protocol is in place for the health and well-being of all. Thank you for your patient understanding and cooperation as we prayerfully and prudently move forward toward the safe reopening of our parish.

**MASS SCHEDULE and SUMMER PARISH OPERATIONS**

**Saturday, August 15 (Solemnity of the Assumption of the Blessed Virgin Mary)**

- 4:00p.m. - 4:45 p.m. - Confession
- 5:00 p.m. - Vigil Mass (limited seating; streamed live on our website and Facebook page)

**Sunday, August 16 - Twentieth Sunday in Ordinary Time**

- 10:00 a.m. - Mass (limited seating)

**Monday, August 17**

- 9:00 a.m. - Daily Mass (limited seating)
- 10:00 a.m. - 2:00 p.m. - Parkside campus open for private prayer (limited seating)
- 10:00 a.m. - 2:00 p.m. - Parish Office open (limited staff)

**Tuesday, August 18**

- 9:00 a.m. - Daily Mass (limited seating)
- Parish Office closed (staff working remotely)

**Wednesday, August 19**

- 9:00 a.m. - Daily Mass (limited seating)
- 10:00 a.m. - 2:00 p.m. - Parkside campus open for private prayer (limited seating)
- 10:00 a.m. - 2:00 p.m. - Parish Office open (limited staff)
- 7:00 p.m. - 9:00 p.m. - Eucharistic Adoration (limited seating)

**Thursday, August 20 - Memorial of St. Bernard**

- 9:00 a.m. - Daily Mass (limited seating)
- Parish Office closed; staff working remotely

**Friday, August 21 - Memorial of Pope St. Pius X**

- 9:00 a.m. - Daily Mass (limited seating)
- 10:00 a.m. - 2:00 p.m. - Parkside campus open for private prayer (limited seating)
- 10:00 a.m. - 2:00 p.m. - Parish Office open (limited staff)

**Saturday, August 22 - (Memorial of the Queenship of Mary)**

- 4:00 p.m. - 4:45 p.m. - Confession
- 5:00 p.m. - Vigil Mass for the Twentieth Sunday in Ordinary Time (limited seating; streamed live on our website and Facebook page)

**Sunday, August 23 - Twenty-first Sunday in Ordinary Time**

- 10:00 a.m. - Mass (limited seating)

*Morning Prayer is prayed at 8:30 a.m. Monday through Friday prior to daily Mass. The Holy Rosary is prayed after each daily Mass.*

*This schedule is subject to change. Please see our website for the most up-to-date information: <https://www.saintlawrencemartyr.org/coronavirus>*



## Mass Intentions

All scheduled Mass intentions, both Sundays and weekdays, which had been scheduled but not celebrated publicly because of COVID-19, have been satisfied (or celebrated privately) by Fr. Victor, most on the date assigned and others on another date. If you have any questions, please contact the Parish Office to find out on which date your requested Mass was celebrated.

### Saturday, August 15 (Public Mass and Livestream):

5:00pm + Shirley Kravitz req by Judy and Dick Boivin

### Sunday, August 16 (Public Mass only):

8:00am

10:00am Mass for the People

12:00pm

5:30pm

### Monday, August 17:

9:00am Paul Smith req by his parents

### Tuesday, August 18:

9:00am + Kathleen Fronczek req by Judi & Patrick McBee

### Wednesday, August 19:

9:00am + Esteban Estrada req by Sally Rico

### Thursday, August 20+ (St. Bernard):

9:00am + Fr. Salado Egido Vicente req by the Trinitarians

### Friday, August 21 (Pope St. Pius X):

9:00am + Bill Zabroske req by Sally Rico

### Saturday, August 22 - (Queenship of Mary):

5:00pm + James Prisco, III req by James Prisco, Jr.

### Sunday, August 23 (Public Mass only):

8:00am

10:00am + Mario Bernardo req by Michaela Bernardo

12:00pm

5:30pm

\*Rosary following Mass

\*\* Rosary and Novena to St. Agatha

\*\*\* Novena to St. Michael of the Saints

†Holy Day of Obligation

## + IN MEMORIAM

Recently deceased members of the parish will be memorialized here in the weekly bulletin during the month of their passing to eternal life, and then permanently on the parish website at [www.saintlawrencemartyr.org/in-memoriam](http://www.saintlawrencemartyr.org/in-memoriam). Click on the deceased's name to view his or her obituary (when available).

Family members of deceased St. Lawrence Martyr parishioners may request the inclusion of their loved one on our *In Memoriam* web page by [clicking here](#), or by calling the Parish Office at 410-799-1970.

**Holy Innocents: A Ministry to Families Who Have Experienced Miscarriage - A Corporal Work of Mercy of Burying the Dead.** If you or someone you know has miscarried and is in need of advice, spiritual support, a home visit, and/or burial and memorial, then please contact us on our helpline at 410-547-3142. Holy Innocents is a ministry of the Archdiocese of Baltimore which is run by the Office of Cemetery Management ([pcarrion@archbalt.org](mailto:pcarrion@archbalt.org)) and the Office of Respect Life ([holyinnocents@archbalt.org](mailto:holyinnocents@archbalt.org)). For more information, visit: [www.holyinnocentsbaltimore.org](http://www.holyinnocentsbaltimore.org).

**Burying the Ashes of those Cremated.** Do you have ashes of cremated family members at home and are in need of an economical way to lay them to perpetual rest? Do you wish to bury your family in sacred ground? *The Ministry of the 14<sup>th</sup> Station: Jesus is Laid in the Tomb* provides the opportunity to bury the ashes of your family in sacred ground. The cost of the burial is \$350 per deceased. For greater details, contact the Office of Cemetery Management at 410-547-5375 or Father Patrick Carrion ([pcarrion@archbalt.org](mailto:pcarrion@archbalt.org)).

#### CATHOLIC TEACHING ON CREMATION

- Following the most ancient Christian tradition, the Church insistently recommends that the bodies of the deceased be buried in cemeteries or other sacred places.
- When, for legitimate motives, cremation of the body has been chosen, the ashes of the faithful must be laid to rest in a sacred place, that is, in a cemetery or, in certain cases, in a church or an area, which has been set aside for this purpose, and so dedicated by the competent ecclesial authority.
- The conservation of the ashes of the departed in a domestic residence is not permitted.
- The ashes may not be divided among various family members.
- In order that every appearance of pantheism, naturalism or nihilism be avoided, it is not permitted to scatter the ashes of the faithful departed in the air, on land, at sea or in some other way, nor may they be preserved in mementos, pieces of jewelry or other objects.

[Read the complete text on the Vatican's website by clicking here.](#)



## Prayer for a Spiritual Communion



 **THE TRINITARIANS**  
THE ORDER OF THE MOST HOLY TRINITY AND OF THE CAPTIVES

My Jesus, I believe that  
You are present in the Most  
Holy Sacrament.  
I love You above all  
things, and I desire to  
receive You into my soul.  
Since I cannot at this  
moment receive You  
sacramentally, come at least  
spiritually into my heart.  
I embrace You as if You were  
already there and unite  
myself wholly to You.  
Never permit me to be  
separated from You.  
Amen.

## FOOD FOR THE SOUL

### Live Prayer on *Relevant Radio*

- [Daily Divine Mercy Chaplet](#) - 4:00 p.m.
- [Daily Rosary](#) - 8:00 p.m.

### Live Video Resources

- [Perpetual Adoration from Tyburn Convent, London](#)
- [Live Feed from the Holy Grotto at Lourdes](#)

### For Reading and Reflection

- *Liturgical Press*: [Give Us This Day](#)
- *Magnificat*: [English](#) | [Spanish](#)
- *Bayard*: [Living with Christ](#)
- *The Word Among Us*: [English](#) | [Spanish](#)

### Rosaries

- Pray along with the Mysteries on [Catholic TV](#)
- Pray the Rosary with Mother Angelica on [EWTN](#)
- Holy Cross Family Ministries [Rosary App](#)

PLEASE PATRONIZE  
OUR ADVERTISERS!



## HEALTH OF THE SICK PRAYER LIST

This list is dedicated to Our Lady under her title Health of the Sick, through which we ask her intercession for healing of all whose names are submitted for inclusion on this holy list which will appear here in the bulletin and the parish website: [www.saintlawrencemartyr.org](http://www.saintlawrencemartyr.org). Please note the following submission guidelines:

- If asking prayers for an individual, please submit the person's first name and last initial only;
- If asking prayers for an entire family, please submit your prayer intention as *The S. Family*;
- Intentions will be kept on our *Health of the Sick* list for two weeks, unless a subsequent request is submitted.
- *Health of the Sick* will be updated each Wednesday.

Be assured that your privacy and that of the person or family who appears on *Health of the Sick* will remain protected and confidential. Submit intentions to [office@saintlawrencemartyr.org](mailto:office@saintlawrencemartyr.org) or [click here](#). For privacy reasons, please do not include details of your intention as Our Lady and her Son know your wants and needs.

*In your charity, please pray for:*

The A. Family	Rosemarie W.
George D.	Roseminda S.
Carole C.	Lloyd B.
The P. Family	Ethel K.
The B. Family	Michael S.
Sister C.	J. and C. D.

Ingrid J.

## August WITH THE *Saints*

August 1	St. Alphonsus Liguori, <i>Bishop and Doctor of the Church</i>
August 4	St. John Vianney, <i>Priest</i>
August 6	Feast of the Transfiguration of the Lord
August 8	St. Dominic, <i>Priest</i>
August 10	Feast of St. Lawrence, <i>our patron saint</i>
August 11	St. Clare, <i>Virgin</i>
August 14	St. Maximilian Kolbe, <i>Priest and Martyr</i>
August 15	Solemnity of the Assumption of the Blessed Virgin Mary
August 20	St. Bernard, <i>Abbot and Doctor of the Church</i>
August 21	St. Pius X, <i>Pope</i>
August 22	Memorial of the Queenship of the Blessed Virgin Mary
August 24	Feast of St. Bartholomew, <i>Apostle</i>
August 27	St. Monica
August 28	St. Augustine, <i>Bishop and Doctor of the Church</i>
August 29	Memorial of the Passion of St. John the Baptist

### WE THANK YOU FOR YOUR GENEROSITY!

Even during this time of uncertainty, our parishioners have continued to be financially supportive of the parish and its ministries for which Father Victor, Deacon Steve, and the Parish Staff are extremely grateful.

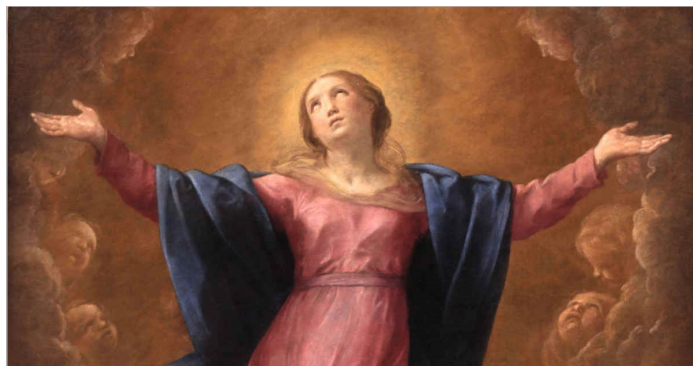
Please know that each of our parishioners and their families remain in our daily prayers. We place all of you in trust to Mary, our mother and Jesus Christ, her Son.

[Click here to support StLM online](#)

[Click here to learn how to support StLM through the mail](#)



StLM Online Giving



#### *Prayer for the Assumption of the Blessed Virgin Mary*

Father in heaven,  
all creation rightly gives You praise,  
for all life and all holiness come from You.  
In the plan of Your wisdom  
she who bore the Christ in her womb  
was raised body and soul in glory to be with Him in heaven.  
May we follow her example in reflecting Your holiness  
and join in her hymn of endless love and praise.  
We ask this through Christ our Lord.

Amen.



### EUCCHARISTIC ADORATION WEDNESDAYS FROM 7PM TO 9PM

Do you desire a more intimate union with Christ? Would you like more time to visit Our Lord during the week?

Weekly adoration may be the answer to what you seek! St. Lawrence Martyr Parish hosts two hours of evening adoration every Wednesday from 7-9pm. Come and let the Lord speak to your heart.



## ST. LAWRENCE MARTYR CATHOLIC CHURCH

WELCOME + WORSHIP + SERVICE

[www.saintlawrencemartyr.org](http://www.saintlawrencemartyr.org)

June 2020

### **HOW YOUR PARISH IS TAKING CARE OF YOU:**

*COVID-19 Safety Protocols for Weekend Masses at Saint Lawrence Martyr*

In compliance with health guidelines set forth by the CDC and Archdiocese of Baltimore, the clergy and staff of St. Lawrence Martyr are observing the following protocols to protect all who come for Mass:

- Everyone (including children older than 2 yrs.) is to wear a face mask when exiting our vehicles upon arrival on parish property, during our time in parish buildings, and until re-entering our vehicles to leave
- Entrance and exit doors are propped open to limit the amount of touch points
- An usher will greet you at the building entrance and offer hand sanitizer
- Ushers are available to help you to your seat; please follow their directions:
  - Seats should be filled first from the front of the church to the rear; this is to enable proper physical distancing;
  - Alternating rows of pews have been closed to increase physical distancing;
  - The floor is marked to help everyone with physical distancing;
  - Families may sit together
- For Holy Communion:
  - Everyone is asked to rise, leave your seat, and process in the Communion line while maintaining proper physical distancing. If you do not wish to receive the Eucharist, you may ask for a blessing from a priest or deacon.
- After Mass is ended:
  - Ushers will provide directions to exit the church, row-by-row, starting with those seated at the back of the church
  - Ushers will remind everyone to maintain proper physical distancing
  - Everyone should immediately return to their vehicle and not congregate inside buildings or in the parking lot.
- All areas are sanitized prior to and following each Mass and Adoration.

*Attendance at last week's two Masses averaged 75 individuals. We have the capacity for 225 persons while maintaining all recommended guidelines.*



**Singleton**  
Funeral & Cremation Services  
Est. 1932

*Family Owned and Operated Since 1932*

**410-766-7070**  
[www.SingletonFuneralHome.com](http://www.SingletonFuneralHome.com)

12<sup>th</sup> AVENUE S.W.  
GLEN BURNIE, MD 21061

**Christian**  
Roofing and Construction

**410-530-8444**  
Alexander Shaw  
Parishioner

~ LICENSED & INSURED ~

**MBAS**  
Mid-Atlantic  
Bookkeeping  
& Accounting  
Services

Outsourced Bookkeeping  
and Support Services  
for Small Businesses

**240-264-6087**

#2097

**Jim Bush**  
**PLUMBING**

• PLUMBING •  
• HEATING •

**410-644-1399**

Buy happy™

**Brown's**  
Toyota of Glen Burnie

SALES • SERVICE • PARTS  
**410-761-9000**  
[www.brownstoyota.com](http://www.brownstoyota.com)

Helping Veterans  
and Pets Create  
New Beginnings  
Together

**PETS FOR VETS**

[www.PetsforVets.com](http://www.PetsforVets.com)

**MONSIGNOR SLADE**  
**CATHOLIC SCHOOL**

Excellence in Catholic Education Since 1954  
Serving Pre-K2 Through 8th Grade

1954 **65** YEARS 2019  
MONSIGNOR SLADE CATHOLIC SCHOOL

**PRE-K & KINDERGARTEN  
INFORMATION NIGHT  
FEBRUARY 27<sup>th</sup> 6:30 p.m**

120 Dorsey Road, Glen Burnie, MD 21061  
**410-766-7130 • [www.msladeschool.com](http://www.msladeschool.com)**

**WEST ARUNDEL**  
**CREMATORY**

PET CREMATION  
PET URNS & MEMORIALS  
Individualized Cremations

**410-674-2600**  
[www.westarundelcrematory.com](http://www.westarundelcrematory.com)  
1411 ANNAPOLIS ROAD • ODENTON, MD 21113

Angie's list

**NEyson**  
TREE SPECIALIST

**301-854-2218**

**WJ HEGARTY**  
HOME IMPROVEMENTS

**NO JOB TOO SMALL**

Small Repairs to Complete Renovation

**410-439-0885**

**House of Tropicals, Inc.**

Tropical Fish • Marine Fish  
Live Corals & Inverts • Aquatic Plants  
Aquarium Supplies • Garden Ponds

**410.761.1113**  
[www.HouseOfTropicals.net](http://www.HouseOfTropicals.net)  
7389 F. Baltimore-Annapolis Blvd.  
Glen Burnie, Maryland 21061

Since 1967

- Removal
- Pruning
- Land Clearing
- Trimming
- Grinding
- Arborist Services Etc
- Crane Service on Tree Removal
- 24 Hour Emergency Service

**FENCE & DECK CONNECTION**  
RESIDENTIAL & COMMERCIAL

FENCES • DECKS • SCREENED PORCHES

**Your Connection to Quality**  
Lifetime Structural Warranty  
& Incredible Financing Offers

Call Today for a Free Estimate  
**410-757-5511**  
[FenceAndDeckConnection.com](http://FenceAndDeckConnection.com)

**RE/MAX® LEADING EDGE**

**JOHN INMAN**  
Realtor® Associate  
PARISHIONER

O: 410-721-9600 • M: 301-922-5049  
[john.inman@remax.net](mailto:john.inman@remax.net)

Each RE/MAX office is independently owned and operated.

**AMERICAN RED CROSS**

ALWAYS THERE  
WHEN I NEED YOU.

MODERN FACILITY ♦ TRADITIONAL SERVICE

HERE FOR YOU WHEN YOU NEED US THE MOST

# DONALDSON FUNERAL HOMES

~ Family Owned & Operated Since 1931 ~

**410-672-2200**

**301-854-0095**

**301-725-1690**

1411 ANNAPOLIS ROAD • ODENTON

12540 CLARKSVILLE PIKE (ROUTE 108) • CLARKSVILLE

313 TALBOTT AVENUE • LAUREL

[www.donaldsonfuneralhome.com](http://www.donaldsonfuneralhome.com)

No matter what your  
real estate goals, turn to  
the team with the  
*knowledge,  
experience  
& expertise*  
to help you make your  
next move the best yet.  
Call Lore & Wil today!

THE **Lore  
Peterson  
Wil Tolbert  
TEAM**

**COLDWELL BANKER** (410) 551-7528  
[www.LoreWil.com](http://www.LoreWil.com)  
RESIDENTIAL BROKERAGE  
Independently Owned and Operated  
by NHT Inc.



**THE TREE PEOPLE**  
TRIM | CUT | GRIND License #1927  
8370 Jumpers Hole Rd, Millersville, MD 21108  
(410) 975-9333



**VIEW THIS BULLETIN ONLINE**

[www.saintlawrencemartyr.org](http://www.saintlawrencemartyr.org)

*PLEASE SUPPORT THE ADVERTISERS WHO SUPPORT  
OUR WEEKLY BULLETIN PROGRAM!!!*

CALL 1-800-883-4343 FOR MORE INFORMATION  
ON ADVERTISING ON OUR PARISH WEBSITE

**SAULTER'S**

**APPLIANCE  
REPAIR**

~ Dave Saulter ~



**410-437-7474**

**LINDA M. BROWN, ATTORNEY AT LAW**

*"Proudly servicing the legal needs of all St. Lawrence Martyr families & friends"*

General Practice • Family Law • Wills & Estates • Elder Law • Tax Law

**240-264-6087**

14405 LAUREL PLACE, STE. 316 • LAUREL, MD

[www.LindaBrownLawOffice.com](http://www.LindaBrownLawOffice.com)

*K*

## PARISH REGISTRATION

We encourage your registration in the family of St. Lawrence Martyr Church. Please fill out and drop it in the offertory basket to begin the registration process.

Family Name: \_\_\_\_\_ Date: \_\_\_\_\_

Address: \_\_\_\_\_ City: \_\_\_\_\_ Zip: \_\_\_\_\_

Telephone: \_\_\_\_\_ Cell: \_\_\_\_\_ Email: \_\_\_\_\_