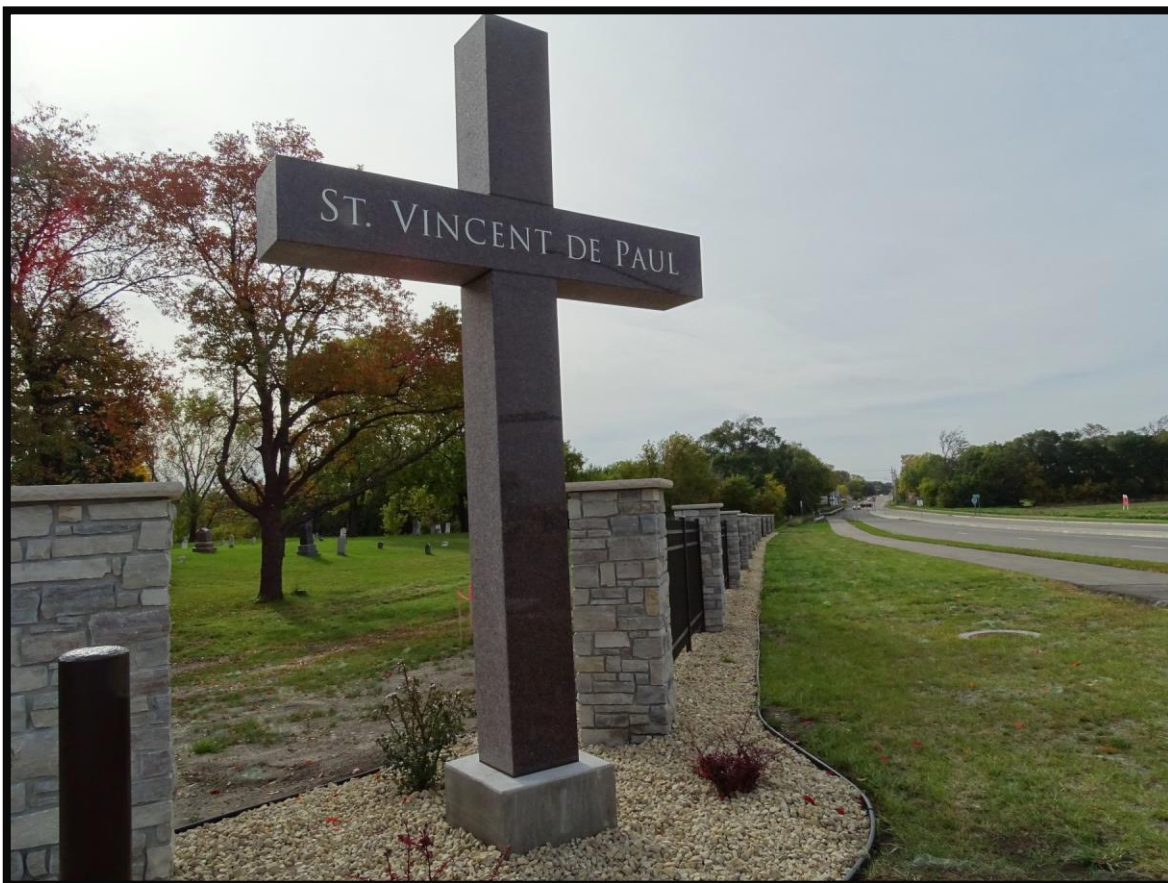


# ST. VINCENT DE PAUL

CATHOLIC CEMETERY

*"It is in dying that we are born to eternal life"*



## General Contact

763-425-2210

[cemetery@saintvdp.org](mailto:cemetery@saintvdp.org)

[Saintvdp.org](http://Saintvdp.org)

## Tess Eiden

Cemetery Coordinator

763-762-7412

[tesseiden@saintvdp.org](mailto:tesseiden@saintvdp.org)

## Andy Phenow

General Cemetery Caretaker  
and Interment Services

763-762-7414

[andyphenow@saintvdp.org](mailto:andyphenow@saintvdp.org)

# Connecting Past, Present and Future

## **The Past**

The first records of interment at St. Vincent de Paul Cemetery is in 1856, about 2 years after the founding of St. Vincent de Paul Church in Osseo. Throughout the years since, the Cemetery has been a place for parishioners and other families to honor lives of loved ones. Today there are over 4,200 buried at St. Vincent de Paul Cemetery. Only a few unsold graves remain in the original Cemetery. In 1934, the Parish purchased farmland acreage directly to the south of the established cemetery, and in 2007 obtained approvals to expand for the long term future.

## **The Present**

The latest expansion contains garden and courtyard sections with over 300 new traditional grave sites, more than 70 cremation grave sites, and a beautifully designed columbarium that contains more than 300 niches for cremation. The expansion also includes numerous new opportunities to remember and commemorate our loved ones, with monuments and walkways, as well as a location for outdoor Mass and other liturgical services.

## **The Future**

The baby and Arms of Hope Miscarriage Memorial area will be enhanced to include a walkway and contemplative garden. Enhancement of perpetual care is continual.

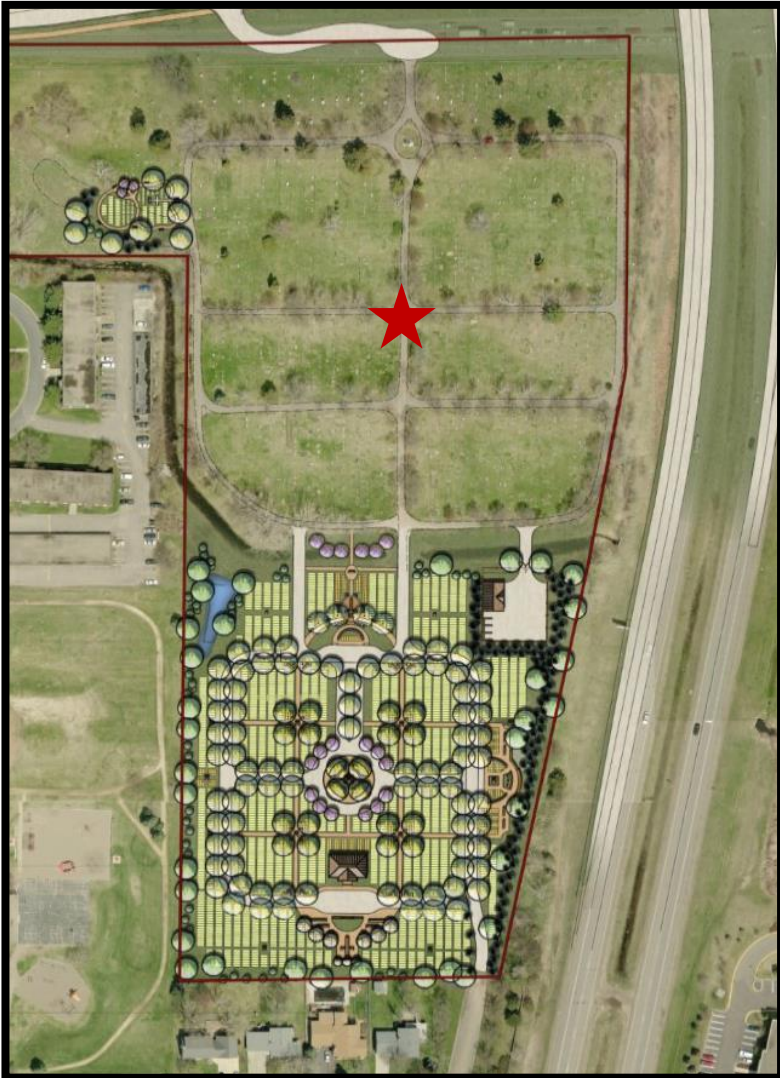
## **Our Ministry**

The St. Vincent de Paul Catholic Cemetery exists to ensure proper interment, memorialization and perpetual care in the Catholic Church's tradition of the corporal works of mercy. Ultimately, we are here to comfort those who mourn and provide a thoughtful space for worship, prayer, and ministry to the bereaved. We offer meaningful opportunities for parishioners, other families, and the community to honor loved ones, including a special service of remembrance each Memorial Day.





# Map



## Key

Existing Cemetery



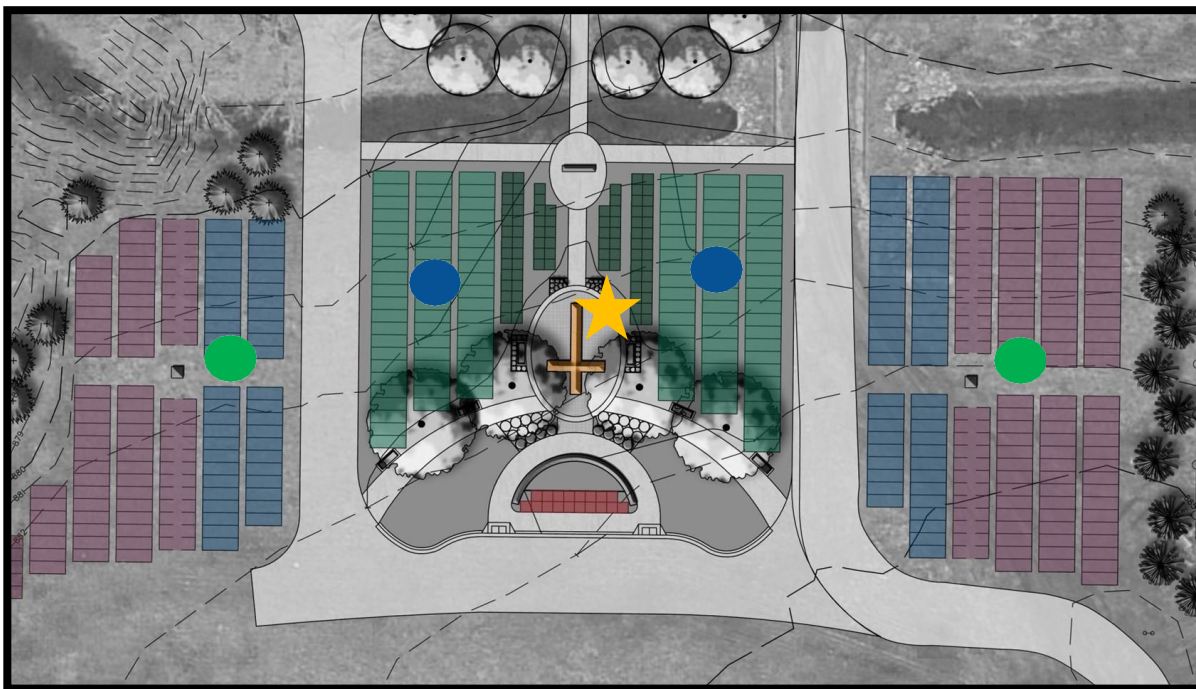
Inner Garden



Outer Garden



Columbarium



# What We Offer

## Burial Descriptions

An in-ground, standard grave site may be used to bury:

- One casket or one cremation, adult or child/infant
- A casket and one cremation
- Two cremations, adult or child/infant

An in-ground cremation gravesite (located in section 12) may be used to bury:

- One cremation, adult or child/infant

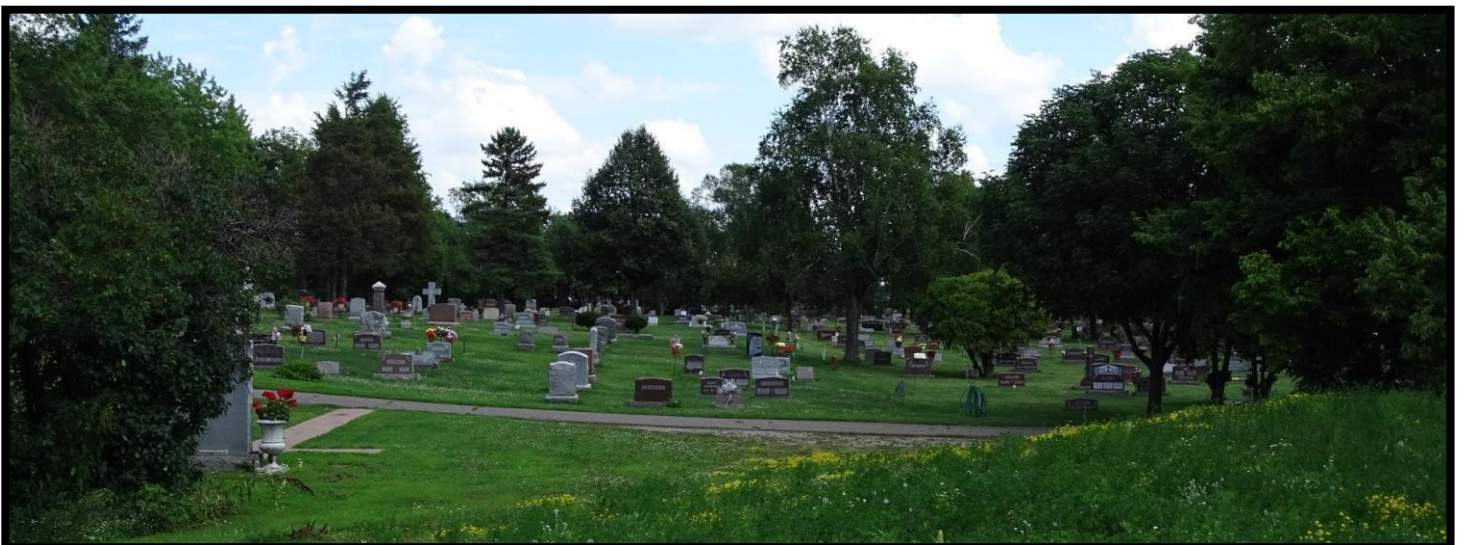


A 12"x12" columbarium niche may be used to bury:

- One cremation urn, to fit in the 12"x12" space
- Two cremation urns, to both fit in the 12"x12"

A 24"x12" family columbarium niche may be used to bury:

- One cremation urn
- Two cremation urns
- Three cremation urns, to all fit in the 24"x12" space





# Description of Elements

## Terminology

**Grave or grave space-** an individually defined lawn area in a cemetery used, or designated to be used, for the burial of human remains.

**Cremation grave-** a ground inurnment space in a section in a cemetery used, or designated to be used, for the burial of cremated remains.

**Columbarium-** an arrangement of cremation niches that may include an entire building, a room, a series of special indoor alcoves, a bank along a corridor or part of an outdoor garden setting.

**Niche-** a space in a columbarium used, or designated to be used, for the inurnment of cremated human remains.

**Urn-** a container for cremated human remains

**Burial-** generic term and is interchangeable with interment and means the disposition of human remains in a cemetery grave, crypt, or niche.

**Owner-** Person or persons

- 1.) To whom the parish, parish cemetery of the individual Minnesota Catholic Diocese, has conveyed a burial right or burial rights.
- 2.) Who have acquired such burial rights by transfer in accordance with these rules and regulations.
- 3.) Who hold such burial rights by law.

**Certificate of Ownership Rights-** The document by which the parish cemetery conveys a right of interment or inurnment in an interment space.

**Pre need-** purchasing cemetery property in advance of actual need. A cemetery property acquired in the pre-need environment may be either be developed or undeveloped.



# Catholics and Cremation

## What the Church Teaches

In keeping with the sacred nature of the body, the Church teaches that cremated remains are to be treated with the same respect given to the human body from which they come. The final disposition of cremated remains should always reflect the Christian belief in the bodily resurrection and the respect afforded to the human body, even after death. This includes:

- 1.) Celebration of the full Catholic funeral rites.
- 2.) Respect in the manner of handling, placement and final disposition of the cremated remains of the body.
- 3.) Burial of the cremated remains in a cemetery, preferably a Catholic Cemetery



## Columbarium

Cremation niches are spaces in the columbarium where the urn containing the cremated remains is placed. A columbarium is a self-standing granite structure with numerous niches.

## What does St. Vincent de Paul Offer?

There are two primary options for the final disposition of cremated remains in a cemetery: in-ground burial or above-ground inurnment.

### Ground burial of cremated remains

- Cremated remains can be buried in a full size grave.
- Cremated remains can be buried in a smaller size cremation grave located in areas designated only for cremation burial.
- Cremated remains can be buried on top of an existing grave occupied by another person, provided permission is given by the lot owner and observance of the cemetery's rules for memorialization are followed.

### Above-ground inurnment of cremated remains

- Cremated remains may be inurned in a columbarium facility which is a free-standing bank of niches located in the cemetery.

# Commemoratives

With the Garden Expansion complete we have opportunities for the St. Vincent de Paul community to commemorate our deceased friends and families. The commemoratives will honor our loved ones and continue to beautify our cemetery. These opportunities can also commemorate the deceased not buried in the St. Vincent de Paul Cemetery.



There are three opportunities to commemorate our loved ones:

- Engraved paver tiles around the columbarium.
- Memorial trees planted throughout the cemetery with an engraved plaque.
- Engraved benches to be placed in designated locations throughout the cemetery.

## Engraved Paver Tiles

Three different sizes are offered:

Size*	Donation
4x8	\$100
8x8	200
12x8	300

A simple engraving 'In Memory' of your loved one(s) is included for the donation. \*See order sheet located on the website for layout and lettering of each size.



## Memorial Trees

There are established trees planted in the cemetery that are being offered for a donation of \$1000. The donation will include a memorial plaque.



## Engraved Benches

Honor your loved ones with a simple engraving on a bench. Benches will be placed in designated and approved locations.



# Advanced Purchasing

## **Making Your Interment Decision Now**

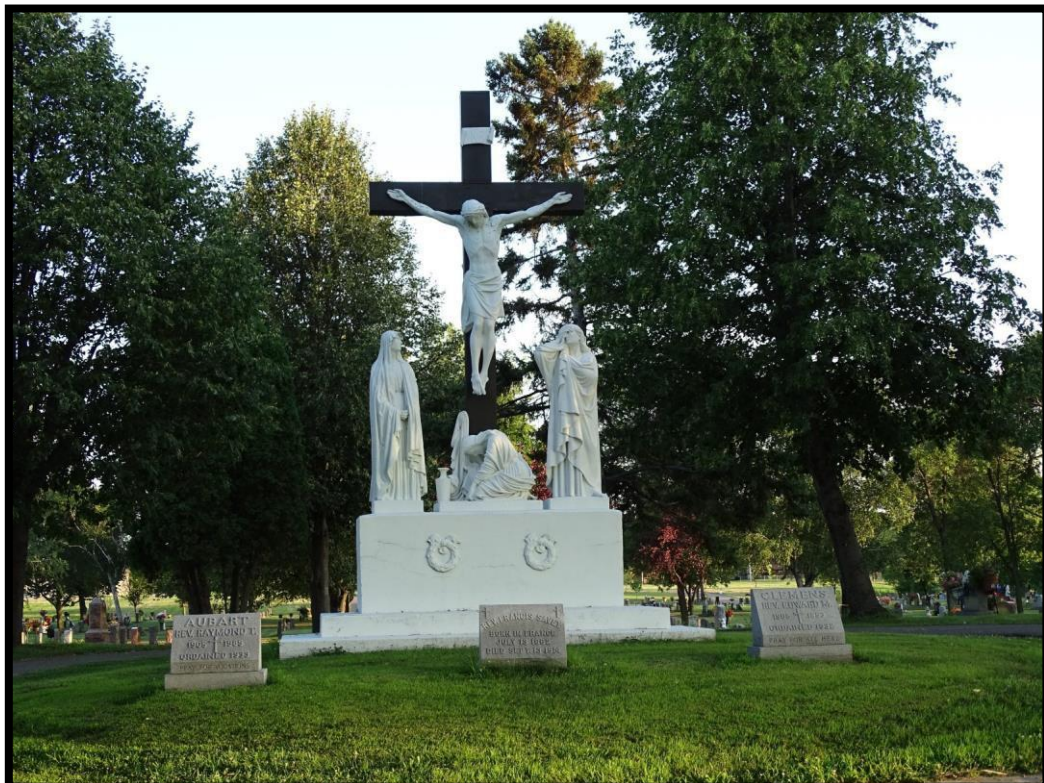
There are three primary reasons for making this decision at this time.

1.) Where you will be interred is very personal decision that has a significant impact on your loved ones. Making the decision now will remove a burden from your family and provide the time to make a thoughtful consideration of your options. Our cemetery councilor can walk you through all the options available.

2.) The new columbarium has only 300 niches and best of these will be taken over the next few years. The grave sites nearest the center of the cemetery expansion will also be sold first. This is even more important if you want adjacent graves/niches for multiple family members.

3.) They will never be better priced. We expect continued inflation in prices as the cost of perpetual care increases. We offer terms and conditions that, after a down payment, can allow payment over a year without interest or financial charges. We anticipate a price increase in July.

We encourage you to call Tess Eiden at 763-762- 7412 and schedule a meeting so she can walk you through the selection process and answer any question you may have.





# Pricing

## St. Vincent de Paul Cemetery Pricing--Effective 7/1/2025

<u>Standard Adult</u> <i>Grave Burial</i> (Grave >6')	Parish Member		Non Parish Member	
	Right of Burial	2nd Right of Burial	Right of Burial	2nd Right of Burial
Original Cemetery	\$1,275	\$315	\$1,520	\$380
East Garden	1,825	460	2,070	520
West Garden	1,900	480	2,140	530
East Outer Garden	1,275	315	1,520	380
West Outer Garden	1,490	370	1,725	440
Cremation Grave	970	N/A	1,100	N/A

<u>Cross Columbarium</u> <i>Niche</i> (12"x12"x12")	Parish Member		Non Parish Member	
	Right of Burial	2nd Right of Burial	Right of Burial	2nd Right of Burial
Row 1	\$2,865	\$725	\$3,090	\$775
Row 2-5	3,330	830	3,550	880
Row 6	3,100	780	3,330	830
<i>Family Niche</i> (12"x24"x12")				
Row 1	5,200	520	5,430	540
Row 2-4	5,950	590	6,180	610

(Niche is 12"x12"x12" and can accommodate as many as 2 regulated sized urns.)

(Family Niche is 12"x24"x12" and can accommodate as many as 4 regulated sized urns.)

(Engraving included on Niche and family Niche pricing if engraved within a year after the purchase)

**\*\* 2nd Right of Burial purchased at a later date will be based on the current price of the grave.**

<u>Infant/Children's Section &lt; 6'</u> <i>Grave Burial -existing cemetery</i>	Parish Member		Non Parish Member	
	Right of Burial	2nd Right	Right of Burial	2nd Right
Infant/Baby < 4'	\$335	N/A	\$550	N/A
Child 4'-6'	445	N/A	660	N/A

Burial Right purchase of a grave for a child/baby other than in the designated section is the same charge as an adult. Interment price is shown below.

### Interment/Inurnment fees

<i>In-ground graves</i>	Adult >6'	Cremation	Child 4'-6'	Infant/Child <4'
April 1 - October 31	\$1,150	\$570	\$335	\$280
November 1-March 31	1,300	715	660	615

If there is more than one urn at the time of burial, though not encouraged, an additional fee will be charged. This does not apply to columbarium burials.

### Inurnment fees

<i>Columbarium Niches</i>	Adult >6'	Cremation	Child 4'-6'	Infant/Child <4'
January 1-December 31	\$570	\$570	\$570	\$570

\* Please note overtime fees for interment/inurnment scheduled on Saturday or in the evening.

### + Miscarried babies

There are no charges for Right of Burial or for Interment of miscarried babies, provided that interment is in the Miscarried Baby section

### Other Fees

Overtime - All Saturday Cemetery services	\$200
Overtime - Saturday Arrival after 1 PM - per hour	\$100
Overtime - Monday through Friday arrival after 3 PM - per hour	\$100
Administrative - Change of Right of Burial Documentation	\$50
Administrative - Duplicate Right of Burial	\$20

Burial site prices and open & close fees are subject to change without notice.

# Rules and Regulations

- St. Vincent de Paul Cemetery will be open during daylight hours and may be visited every day of the year, weather permitting.
- Visitors will be responsible for their own safety as there is not staffed security.
- Prices for purchase and for burial in St. Vincent de Paul Cemetery are included on the website and in this brochure. An interment will not be permitted until the site and burial fee has been paid.
- No shrubs, trees, or plants may be planted on cemetery grounds except under the approval and supervision of the church Sexton and in designated areas only.
- Flowers and plants must be on stands approved by the Cemetery Association to facilitate mowing and trimming. All dead flowers and plants will be removed.
- Live, potted flowers and plants in standardized, approved plant stands are allowed and preferred.
- Christmas decorations are limited to greenery and will be removed and discarded in the spring as weather permits.
- Glassware of any kind is not permitted.
- Benches are not allowed unless approved as a memorial and placed by the cemetery association.
- No pets are allowed on cemetery grounds.
- The Sexton, appointed by the Pastor with the counsel of the Cemetery Association, will be the only one allowed to dig any grave in the cemetery. The fee for opening a grave is to be paid in advance.
- All in-ground burials must be enclosed in a vault, with the exception of miscarriages and cremations. Unfinished, wooden, cremation urns must be contained in a vault provided by the Funeral Home.
- In no case shall an unearthing be made unless authorized by the Reverend Pastor and in accordance with State Laws.
- At least one member of the family shall be a Catholic in order to buy a lot in St. Vincent's Cemetery.
- No monuments will be allowed bearing signs, emblems or inscriptions contrary to the beliefs and tradition of the Catholic Church. Monuments should include a commonly recognized Catholic religious symbol.
- No markers or monuments shall be placed in the cemetery without supervision of the Sexton.
- The Cemetery is a sacred place. Those who are entering the cemetery must display proper respect for the deceased and for the sacred interment spaces.



# Location

**Our cemetery is located at:**  
**8601 93rd Avenue North**  
**Osseo, MN 55369**

## Directions:

From the north on Hwy 169

Right on 109th Ave. to Jefferson Hwy  
Left on Jefferson Hwy to 93rd Ave. (Cty Rd 30)  
Left on 93rd Ave. past the church  
Right into the cemetery

Option from Hwy 81

North on Central Ave through Osseo  
Right on 93rd Ave  
Right into the cemetery

From South on Hwy 169

Take 93rd Ave (exit on the right)  
At top of hill take a right  
Left into the cemetery

From the East on MN- 610

Exit West Broadway  
Left on West Broadway  
Right on 93rd Ave  
Cross over Hwy 169  
Left into the cemetery

From the West on MN- 610

Exit Zachary Lane  
Right on Zachary Lane  
Left on 93rd Ave  
Continue past the church  
Right into cemetery

