



## GOOD NEWS MESSENGER

The Thirty-first Sunday in Ordinary Time

November 3, 2019



31<sup>st</sup>

SUNDAY IN ORDINARY TIME

When he reached the place, Jesus looked up and said, "Zacchaeus, come down quickly, for today I must stay at your house." And he came down quickly and received him with joy. - Lk 19:5-6

Excerpts from the Lectionary for Mass ©2001, 1998, 1970 CCD.

©LPI

### MASS

Sunday: 7:30 a.m./9 a.m.  
10:30 a.m./Noon/ 6 p.m.  
Saturday: 8 a.m./5 p.m.  
Monday-Friday: 6:30 a.m./8 a.m.

### CONFESSION

Sundays Before Masses  
Saturdays 4-4:45 p.m.  
Wednesdays 6-6:45 p.m.  
By Appt: Call Fr. Keller or Fr. Weber

### CLERGY

Rev. Thomas Keller  
Ext. 1202; [kellert@assumptionstl.org](mailto:kellert@assumptionstl.org)  
Rev. Ryan Weber  
Ext. 1205; [weberr@assumptionstl.org](mailto:weberr@assumptionstl.org)  
Deacon Chuck Ryder  
[ryderc@assumptionstl.org](mailto:ryderc@assumptionstl.org)  
Deacon David Schaefer  
Ext. 1254; [schaeferd@assumptionstl.org](mailto:schaeferd@assumptionstl.org)

### CONNECT

Parish APP: [myParish.com](http://myParish.com)  
Website: [assumptionstl.org](http://assumptionstl.org)  
Facebook: [/assumptionparishstl](https://www.facebook.com/assumptionparishstl)  
Twitter: [#AssumptionSTL](https://twitter.com/AssumptionSTL)  
Instagram: [@assumptionstl](https://www.instagram.com/assumptionstl)  
Phone: 314-487-7970  
Fax: 314-892-5513  
Live Mass: [assumptionlive.com](http://assumptionlive.com)

4725 Mattis Rd.  
St. Louis, MO 63128



Keep in touch with us via email and text message with Flocknote!

Text [assumptionstl](http://assumptionstl.org) to the number 84576 or visit us online at [flocknote.com/assumptionstl](http://flocknote.com/assumptionstl)

Text STOP to 84576 to stop txt notifications at any time. Text HELP for help. There is no charge for this service, but your carrier message and data rates may apply. View full privacy policy & terms at [flocknote.com/txt](http://flocknote.com/txt)



## This Week

<b>SUN 11/3</b>	8 a.m. 7 p.m. 7 p.m.	<b>*Good News Sunday*</b> Bake Sale for Books-LL Our Lady of Guadalupe for Life-AC Men's Basketball-GYM
<b>11/4</b>	8:30 a.m. 5:30 p.m. 6 p.m. 6:30 p.m. 7 p.m. 7 p.m. 7 p.m.	Rosary-CH PSR Choir-CH PSR Classes-CH Society of St. Vincent de Paul-REC Purgatorial Mass-CH Fishers of Men-LL (library) Separated/Divorced Catholics-LL
<b>TUE 11/5</b>	8:30 a.m. 8:45 a.m. 4 p.m. 6 p.m. 6:30 p.m. 7 p.m. 7 p.m.	Exercise-LL Rosary-CH Jr. Girl Scouts (Masson) -LL Lion Cub Scouts-CAFÉ Fatima Rosary-CH WINE Group-LL ACTS Men group-LL
<b>WED 11/6</b>	8:30 a.m. 8:30 a.m. 9 a.m. 6 p.m. 7 p.m. 7 p.m. 7:30 p.m.	Rosary-CH Senior Wednesdays-LL Quilters-LL Parish Holy Hour-CH Inside Catholicism-LL Choir Practice-CH Boy Scouts-CAFÉ
<b>THU 11/7</b>	8:30 a.m. 8:30 a.m. 3:30 p.m. 7 p.m.	Rosary-CH Exercise-LL Cub Scouts-LL ACTS Men's Leadership Group-LL
<b>FRI 11/8</b>	8:30 a.m. 8:45 a.m. 10 a.m. 2:30 p.m. 6:30 p.m.	Rosary-CH Senior Breakfast with 1st/8th graders-LL Chair Exercises-LL Brownies-Menendez-LL Reconciliation Retreat (option 1)-LL
<b>SAT 11/9</b>	8:30 a.m. 9:30 a.m. 4 p.m.	Rosary-CH Reconciliation Retreat (option 2)-LL Confessions-CH
<b>SUN 11/10</b>	7 p.m. 7 p.m.	Our Lady of Guadalupe for Life-AC Men's Basketball-GYM

CH—Church SC—School CAFÉ—Cafeteria  
H—Parish Center REC—Rectory Lower Level  
LL—Church Lower Level AC—Chapel

## Special Events

<b>Nov. 4</b>	<b>Purgatorial Mass at 7 p.m.</b>
Nov. 6	Open House for Parish School & AELC
Nov. 8	Assumption School Senior Breakfast
Nov. 28	Assumption Thanksgiving Family Brunch
Dec. 1	Advent by Candlelight/Campfire Light

### Advent by Candlelight for Women

Sunday, December 1

5:30—8:30 p.m. in the Assumption Parish Center  
Gather your friends and join us for an evening of food, fellowship, and reflection! \$120/table of 8 or \$15/individual. Proceeds support Assumption Youth Ministry.  
For more information, contact Lynn DiRaimondo at 314-496-7477 or lynndiraimondo@gmail.com

### Advent by Campfire Light for Men

While the women of the parish are at Advent by Candlelight, the men of the parish will be having their own fellowship around the fire pit in the Outdoor Classroom.  
No cost! For more information, contact Dcn. Dave Schaefer at schaeferd@assumptionstl.org.



**Assumption Parish Schools**  
**Open House**  
Wednesday, November 6  
at 6:30 p.m.

### Youth Choir at the STL Ambush Game!

Looking for a fun Christmas gift for your family? Get a gift certificate for tickets to the St. Louis Ambush Soccer Club! Assumption Day with the Ambush will be Jan. 19. Look for certificate forms by the bake sale!

## Mass Intentions †

<b>November 3</b>	<b>SUNDAY</b>
7:30 a.m.	John Ellis †
9 a.m.	Nick Winston †
10:30 a.m.	Josephine Pisoni †
Noon	People of the Parish
6 p.m.	Nicholas DeRienzo †
<b>November 4</b>	<b>MONDAY</b>
6:30 a.m.	Patrick Noonan †
8 a.m.	Raymond Sherman †
<b>November 5</b>	<b>TUESDAY</b>
6:30 a.m.	Vince Domagalski †
8 a.m.	Vi & Al Camenzind †
<b>November 6</b>	<b>WEDNESDAY</b>
6:30 a.m.	Vincent Robben †
8 a.m.	Ruppe Family
<b>November 7</b>	<b>THURSDAY</b>
6:30 a.m.	John Livingston †
8 a.m.	Michael Manning
<b>November 8</b>	<b>FRIDAY</b>
6:30 a.m.	Nancy Bircher
8 a.m.	Magdalena Fischer †
<b>November 9</b>	<b>SATURDAY</b>
8 a.m.	Don Smith †
5 p.m.	Helen Bell †
<b>November 10</b>	<b>SUNDAY</b>
7:30 a.m.	People of the Parish
9 a.m.	Marian Loeffler †
10:30 a.m.	Joseph Kauffmann †
Noon	Linda DeClue †
6 p.m.	Carole Melsheimer †
	† denotes deceased

## In Our Prayers

### THOSE WHO ARE ILL

Marietta Lewandowski

Marie LoPiccolo

Mike Love

Kristen Lowry

Rachael Lozano

Ed Lueders

Ann Macke

Michael Manning

Ann Marie Marelli

Marilyn Massey

William McConnell

Charlie McFarland

Bob McHugh

### OUR MILITARY

*\*denotes parishioner*

Andrew Titus USN\*

Matthew Titus USN\*

Eddie Torres, USAF

Marti Torres, USAF

Jenna Welchlen, USA

Steven Wodraska, USN

Nicole Wright, USA

Joshua Zarr

Tim Andrews USCG

Isaiah Angeli USMC\*

Davey Ardrey USAR

Raymond Bast USN

Ryan Boedeker

## Rest in Peace

Richard Cassoutt  
Joseph Frisella

## Weekly Readings

**Sunday:** Wis 11:22-12:2, Psalms 145: 1-2, 8-11, 13-14, 2 Thess 1:11-2:2, Lk 19:1-10

**Monday:** Rom 11:29-36, Psalms 69:30-31, 33-34, 36-37, Lk 14:12-14

**Tuesday:** Wis 3:1-9, Psalms 23:1-6, Jn 6:37-40

**Wednesday:** Rom 13:8-10, Psalms 112:1-2, 4-5, 9, Lk 14:25-33

**Thursday:** Rom 14:7-12, Psalms 27:1, 4, 13-14, Lk 15:1-10

**Friday:** Rom 15:14-21, Psalms 98:1-4, Lk 16:1-8

**Saturday:** Ezek 47:1-2, 8-9, 12, Psalms 46:2-3, 5-6, 8-9, 1 Cor 3:9-11, 16-17, Jn 2:13-22

**Sunday:** 2 Macc 7:1-2, 9-14, Psalms 17:1, 5-6, 8, 15, 2 Thess 2:16-3:5, Lk 20:27-38

### Campus Clean-Up

Volunteers are needed to help us with raking leaves and cleaning up the parish grounds on Saturday, Nov. 9th! We'll start the clean-up after 8 a.m. Mass. Questions? Call Ken at 314-406-0511.



**Roman Catholic Foundation**

### Sustaining Our Mission for the Future!

Gifting appreciated securities to Assumption's parish endowment fund or education endowment fund can provide great benefits to you and Assumption. To learn more, contact the Roman Catholic Foundation, our planned giving partner, at 314-918-2890 or at [giftplanning@rcfstl.org](mailto:giftplanning@rcfstl.org).

Visit [assumptionstl.org](http://assumptionstl.org) to register today for Online Giving!



† Usual contributions for Mass offerings are now \$10. Please stop by the Parish Office during office hours to arrange to have a Mass said.

## Congratulations!



Congrats to parishioner Phil Vitello on being one of the recipients of this year's Archbishop Rigali Service Award!

## Ladies of the Little Flower Harvest Fest

Ladies of the Little Flower will be having their Harvest Feast dinner on November 11th at 6 p.m. in the Church Lower Level. Please bring the following: Ladies with last names A-G, a hot vegetable; last names H-O, a dessert; last names P-Z, salad. Questions? Email Robbie at rmh2522@gmail.com.

**PARISH HOLY HOUR**  
*Wednesdays* from  
6 — 7 p.m.  
in the church.

## October 27 Stewardship

All Saints	\$20.00
Archdiocese for Military	\$10.00
Fill the Gap	\$50.00
Flood/Disaster Relief	\$25.00
General Fund 2019	\$19,382.62
Gift	\$10,000.00
Latin American Apostolate	\$25.00
Maintenance Fund	\$75.00
Mission Society—October	\$455.00
Partners in Education	\$100.00
Permanent Diaconate	\$80.00
Pro-Life Foundation	\$950.00
Pro-Life Stewardship	\$422.00
Purgatorial Society	\$135.00
Retired Religious	\$110.00
St. Vincent de Paul	\$558.00
<b>Total</b>	<b>\$32,397.62</b>

## Baptisms



Congratulations to George on his Baptism on September 15, 2019. Pictured with George are his parents, Beth & Jack, Fr. Weber, and godparents, Colleen & John.

## Happy Anniversary!



Congrats to John & Linda Bergfeld on 50 years of marriage, which they celebrated with Mass & a special blessing from Fr. Weber on October 6th!

## Registering at Assumption

Everyone needs a family. Belonging to a parish family unites us with people of all ages and backgrounds in the journey to Jesus Christ.

Assumption Parish (Mattese) warmly welcomes you to our family of Faith!

I/We would like to register at Assumption:

Name: \_\_\_\_\_

Phone: \_\_\_\_\_

E-mail: \_\_\_\_\_

Please return this slip to the Parish Office (located in the Rectory) or drop in the offertory basket, and we will be in touch soon to help you register here! You may also visit the office Monday-Friday, between 8 a.m. and 4 p.m. to register.



## Assumption Parish Mission

### Our Mission:

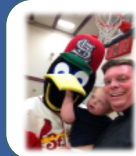
- Worship God
- Share the Good News of Jesus
- Serve Christ in others

### Our Vision:

- Continue the work of Jesus Christ

### Our Goal:

Every parishioner  
— a saint!



## Pastor's Column

Fr. Thomas Keller

### Planning for the Future

One powerful way of supporting Assumption is giving to our endowments. An endowment is a fund that is invested in financial markets to increase over time. An endowment's initial investment (known as "principal") cannot be withdrawn. Each year, the parish may decide to withdraw a portion of the interest known as "total return spending policy" (TRSP) or we can reinvest the return back into the endowment. Endowments are intended to provide stable income to charitable institutions into perpetuity.

**St. Louis Archdiocesan Fund "Assumption Parish Endowment":** During Fr. Seper's time as pastor, Assumption established an endowment for \$264,000 with the Archdiocese of St. Louis. That endowment has grown to \$459,692 and will give the parish a TRSP of \$19,060.65 this year.

Last year, we withdrew some of the return to renovate the kitchen in the Church Lower Level. The new kitchen is practical, beautiful and when you see it, you see the power of an endowment!

Additionally, the Grant family has contributed to this endowment in memory of their son, Brett Grant; the annual TRSP supplies scholarships to two Assumption grade school families and also annually provides two, one-time \$1,000 scholarships to Assumption graduates who choose Vianney or Nerinx High Schools.

**Roman Catholic Foundation:** Archbishop Carlson recently established the Roman Catholic Foundation (RCF). Each parish can create its' own endowments with the RCF. Assumption currently has two endowments with the RCF. We hope to let these grow before we withdraw the TRSP.

The first is the "**Assumption General Parish Endowment.**" A generous anonymous parishioner started a RCF general parish endowment with an initial gift of \$25,000 in 2017. With interest and additional deposits by the parish, it has already grown to \$52,090.

The second is the "**Assumption Catholic Education Endowment.**" This year, the parish appropriated \$100,000 from our *Partners in Education* fund to create a second RCF endowment for Catholic education at Assumption.

**You can contribute!** If we are able to grow our endowments, Assumption will always have a sizable guaranteed income. I invite all parishioners to consider contributing to our endowments.

Donations are tax-deductible. It is possible to designate a cash gift at anytime no matter how small or large. Some parishioners make donations of stock and other investments or they remember the endowments in their will or trusts. It is also possible to designate a new endowment for a particular ministry of the parish or to contribute to an existing one.

All RCF endowments remain with the parish and are legally separated from the Archdiocese; they are professionally managed, and all decisions to withdraw the return are made in consultation with the Parish Council, Finance Council, as well as the Stewardship and Development Committee to guarantee parishioner consensus. You can learn more at [rcfstl.org](http://rcfstl.org) or [assumptionstl.org](http://assumptionstl.org).

God bless, Fr. Keller



# RECLAIMING MY CATHOLIC FAITH

## Praying for the Dead Week 31

Since the earliest times of Christianity, believers have prayed for the souls of the dead. Christians also respect the mortal remains of the deceased because we believe that the body will be raised up and reunited with the soul in the resurrection of the dead on the “Last Day.”

Christians believe the soul is meant for perfection with God. The whole of the Christian life, beginning with baptism, then by growing in grace through the sacraments, developing habits of virtue, avoiding sin, and performing penances for past sins all help to perfect the soul. But realistically, no one’s soul is perfect when they die. This means that the soul is still lacking what it needs to enter fully into the beatific vision of God.

The remedy the Church has always offered for dying with imperfection or the stain of sins on one’s soul are the prayers for the dead that call on the mercy of God to make perfect whatever has not become perfect through grace, virtue and penance. This is the experience of Purgatory. Purgation from sin strips one of whatever love for sin or effects of sin that remains in one after death.

The resurrection of the dead means that Christians believe that their mortal bodies, often imperfect from birth or increasingly deteriorating with age, are glorified with Christ and are raised up on the “Last Day” when Christ will come again to judge the living and the dead. Only our imaginations can create an image of what that will be like, for nothing in our experience up to now can give our minds guidance. Yet, St. Paul and the New Testament authors believed in the resurrection so deeply that everything hinged on this truth. St. Paul even says, “without the resurrection, your faith is in vain.”

Funeral Masses are intended as moments when family and friends pray for the repose of the soul and they honor the body of a loved one in the hope of the resurrection. Today there are a lot of options pushed by the funeral industry, but Catholics should always choose an option which encourages prayer for the deceased, preferably Mass, and which honors the body of the deceased by burial, even if cremation occurs. Catholics also should be buried in a blessed grave because it is a sign of hope in the resurrection. Catholic cemeteries are always blessed at the time they are inaugurated. The priest can bless the grave at the time of burial if the person is not buried in a Catholic cemetery.

The Church recommends offering of Masses, praying the rosary or offering other prayers on behalf of the deceased. Many don’t realize it, but at almost every Mass, the priest carries the intention of someone who has died to the altar in his heart.

November is a special month dedicated to praying for the dead. All Souls Day (November 2<sup>nd</sup>) is dedicated to offering special Masses for the dead. There is also a special indulgence granted, once a day, to anyone who visits a cemetery to pray for the repose of the soul of a deceased person from November 2-10.

It is an act of charity to pray for the dead. It is also encouraged to pray for the souls of the “poor souls” in Purgatory who have no one to pray for them, as this is a very charitable activity.

### Questions for Reflection:

- Do I remember my deceased loved ones in prayer?
- Do I pray for the souls who have no one to pray for them?
- Have I encouraged family to remember our loved ones in prayer?

**Assumption  
Parish School**  
Jenn Sykora  
Principal



### Assumption School Senior Breakfast

Seniors — please join us on Friday, November 8<sup>th</sup> at 8:45 A.M. in the Church Lower Level!  
The 8th graders will serve breakfast, and the 1<sup>st</sup> graders will perform Thanksgiving songs.  
RSVP: Jill Love at 314-487-6520 by 11/4/19



**Senior Ministry**  
Laura Benson  
Senior Apostolate Coordinator

### Senior Ministry activities

- 11/4 7 p.m. **Purgatorial Mass** for All Souls who had a funeral at Assumption this past year.
- 11/6 8:30 a.m. Coffee, tea, juice and sweet treats  
10 a.m. Chair exercises  
11a.m. Information on "**Discussing Vocations with your Families, especially Grandchildren**". This week is National Vocation Awareness Week. Please bring brown bag lunch.
- 11/8 8:45 a.m. **Assumption School Senior Breakfast** (more info in the school square!)
- 11/13 Pot-luck Lunch and Game afternoon beginning with 10 a.m. chair exercises. **NOTE: IF YOU NEED A RIDE, PLEASE CALL JUDY TALLEUR at 314.852.4090 OR EMAIL [shuttlebus@assumptionstl.org](mailto:shuttlebus@assumptionstl.org) for a ride to or from church that morning.**

## Advent Wreath-Making

**Family Activity Day  
in conjunction with PSR!**

**Monday, November 25  
6:15-7:30 p.m.**

**\*Please RSVP by November 11  
for Advent wreath supplies ordering  
to [stringerv@assumptionstl.org](mailto:stringerv@assumptionstl.org).**

**Faith**  
FAITH IN THE HOME

## *aym Upcoming Events*

- Life Night (Nov 3)- **UNSETTLED: UNEXPECTED GIFT**  
St. Gianna teaches us that love is not a feeling, it's an action. To love is to sacrifice. Join us for a life night on the vocation of marriage!

-Life Night (Nov 10)- **UNSETTLED: GRATEFUL BEGGER**  
If we stop trying to control our lives, we give the Lord the space to create something even greater than we could ever imagine. Life night at 7 p.m!

- Life Night (Nov 17)- **UNSETTLED: ABUNDANT SACRIFICE**  
JPiI Fun Fact: He traveled 775,000 miles to spread the Good News. How far are we willing to go? See you after 6pm Mass in the youth room!



 **LIFE TEEN**



## IMPACT REPORT – FALL 2019

***\$110 million pledged! Thank you!***

### Across the Archdiocese

#### ➤ IMPACT TO DATE:

- **40% Parish Share Distributions**
  - \$32.9 million distributed to 184 parishes
- **Beyond Sunday Scholarships**
  - \$7.2 million awarded to 1,767 unique students attending 135 Catholic elementary & high schools
- **Beyond Sunday School Grants**
  - \$1.8 million granted to 77 schools & PSR programs for academic capacity enhancement
  - \$571,900 granted to 14 schools & PSR programs, the Catholic Education Office & the Department of Special Education of the Archdiocese of St. Louis for transformational innovation
- **Beyond Sunday Education Endowment Fund**
  - \$29.7 million invested to provide sustained scholarship support

### Assumption Parish-227

\$1,019,970 raised in gifts & pledges

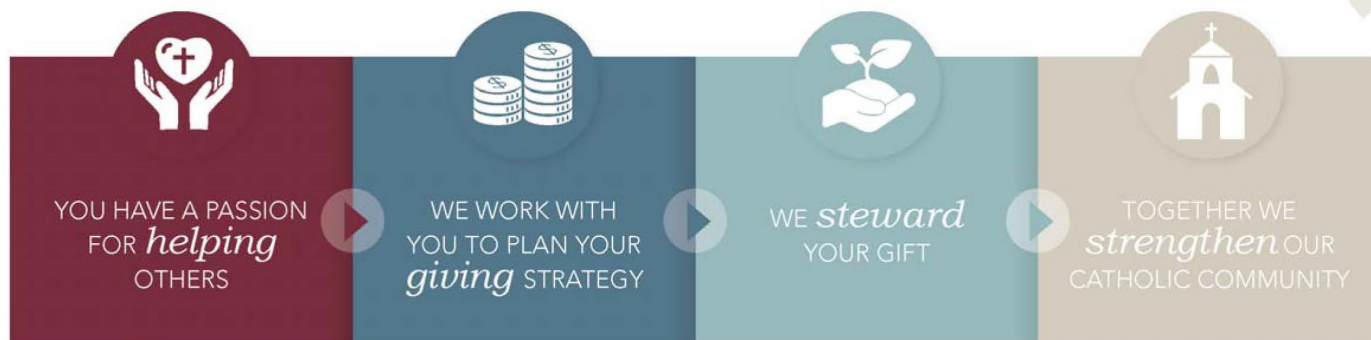
#### ➤ IMPACT TO DATE:

- **40% Parish Share Distributions**
  - \$274,181 distributed to be spent according to the Parish case statement
- **Beyond Sunday Scholarships**
  - \$102,375 awarded to 26 student(s) in our Parish
- **Beyond Sunday School Grants**
  - \$39,598 granted to our school

*The Roman Catholic Foundation is a 501(c)(3) public charity, independent from the Archdiocese of St. Louis. The Foundation has directed all Beyond Sunday funds (less campaign expenses) to support Catholic education and address local parish needs. No Beyond Sunday contributions have funded or will fund anything else.*

## THE ROMAN CATHOLIC FOUNDATION

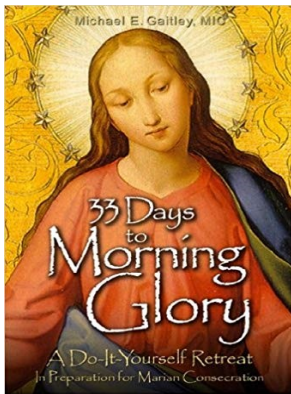
*Sustaining* THE LOCAL CHURCH FOR *future generations.*



**Roman Catholic Foundation**  
of  
EASTERN MISSOURI

314.918.2890 | rcfstl.org





## WINE (Women In The New Evangelization) 6-week Book Study :

WINE: Women In the New Evangelization is a creative and inspired ministry to invigorate women's groups and parishes through encouraging, supporting, and nurturing women in the Catholic faith and by equipping and mobilizing women as intentional disciples of Christ. The first meeting is 10/29/2019 in the Lower Level of the Church at 7-9 p.m. This is a 6 week study and will require reading 2 pages a day of the book. The book is "33 Days to Morning Glory" – author is Fr. Michael E. Gaitley, MIC. There is a work book as well. Please consider purchasing the book from Pauline Bookstore~ The study concludes on 12/3/2019 and on 12/9/2019 is the Immaculate Conception of the Blessed Virgin Mary. There will be two meetings, 11/12/19 and 11/26/19, that will be in the lower level of the RECTORY -same time 7– 9 p.m.

## Sponsor-A-Family 2019

It's time to call and sign up to sponsor a family for 2019! There are families in great need of your help! If shopping and wrapping is not your thing, or if you simply cannot fit it into the budget this year, please consider making a cash donation of any size to this worthy program. Checks can be payable to Assumption, with sponsor a family noted in the memo, and dropped at the parish office at any time. Please consider getting your donations in early so that the elves have time to shop and wrap! Thank you for being a Christmas angel to those in need! Contact Amy Craig at 314-416-7388 or [amycraig1133@yahoo.com](mailto:amycraig1133@yahoo.com)



Join us Thanksgiving Day following the 9 a.m. Mass in the St. Marie Hall for an Assumption Parish Family Brunch! **Basic brunch items**, like coffee, juice, turkey, & gravy will be provided! Everything else is **potluck**; so if you can, bring a casserole, pie, etc. to share! If you come early for our 9 a.m. Thanksgiving Mass, please drop your dish off downstairs **FIRST** & then join us upstairs for Mass!



## Our Lady Help of Christians Adoration Chapel

Open 24/7. (Contact the Parish Office for the keycode.)

## Teams of Our Lady Marriage Ministry

Are you and your spouse looking to deepen your faith in a ministry that focuses on your marriage? Would you like to be a part of a small group of other Catholic couples as you endeavor to make Christ the center of your marriage? Then *Teams of Our Lady* might be what you are looking for! You will meet monthly for dinner, prayer and fellowship and commit to activities between meetings that will enrich your lives as married couples. **WE ONLY NEED ONE MORE INTERESTED COUPLE TO BEGIN THE FIRST "TEAMS OF OUR LADY" AT ASSUMPTION.** If you are interested, please contact Christine at 314-607-8163 or [missuscg@gmail.com](mailto:missuscg@gmail.com).

## Class of 1970 Reunion Announcement

Assumption Class of 1970 Reunion Alumni looking for help organizing and locating classmates for our April 25, 2020 event. Volunteers can contact David Gleich 314-920-0446, Cliff Albers 636-751-3262, Roger Huelsing 314-378-0181 or Lynne Zeiser Russo 314-283-6321.

## INSIDE Catholicism

**Inside Catholicism is for anyone who wants to learn more about the Catholic faith.**

**It will consist of a presentation, as well as a Q & A portion. All are welcome!**

**7 – 8:30 p.m.  
in the Church Lower Level  
on Wednesday nights!**

**November 6      November 13  
November 20**

## Contact Us

### CLERGY

314-487-7970

Reverend Thomas Keller  
Pastor

Ext. 1202

kellert@assumptionstl.org

Reverend Ryan Weber  
Associate Pastor

Ext. 1205

weberr@assumptionstl.org

Deacon Chuck Ryder

ryderc@assumptionstl.org

Deacon David Schaefer

Ext. 1254

schaferd@assumptionstl.org

### PARISH STAFF

314-487-7970

Mrs. Laura Benson  
Senior Apostolate Coordinator

Ext. 1221

bensonl@assumptionstl.org

Miss Cecilia Detwiler  
Coordinator of Evangelization

Ext. 1203

detwilerc@assumptionstl.org

Mrs. Nancy Pyle  
Music Director

pylen@assumptionstl.org

Mrs. Denise Riek  
Office Manager

Ext. 1235

riekd@assumptionstl.org

Mrs. Caitlyn Sextro  
Youth Minister

Ext. 1233

chickeyc@assumptionstl.org

Mr. Matt Yates  
Maintenance Coordinator

Ext. 2235

yatesm@assumptionstl.org

### PARISH and SCHOOL EDUCATION STAFF

314-487-6520

Mrs. Julie Connors  
PSR Principal

Ext. 2219

connorsj@assumptionstl.org

Miss Valerie Stringer  
Director of Elementary  
Religious Education

Ext. 2218

stringerv@assumptionstl.org

Mrs. Shelley Michael  
Assumption Early  
Learning Center Director

Ext. 1227

michaels@assumptionstl.org

Mrs. Jennifer Sykora  
School Principal

Ext. 2121

sykoraj@assumptionstl.org

## Good News Messenger

<b>Issue</b>	<b>Deadline (4 p.m.)</b>
November 10	November 1
November 17	November 8

— Please go to [www.assumptionstl.org/bulletin-submissions](http://www.assumptionstl.org/bulletin-submissions) and submit an online form to request event promotion and/or to book a room

— PDF files cannot be used  
— .jpg files required for any photos/graphics

**Questions or comments?**

[newsletter@assumptionstl.org](mailto:newsletter@assumptionstl.org)

## Please Support Our Advertisers!

**The Society of St. Vincent de Paul Hotline**  
314-289-6101, ext. 2227

## Assumption Annual Women's Retreat Nov. 18 – Nov. 21, 2019

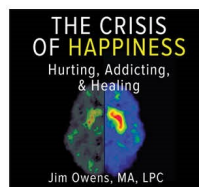
Assumption's annual Women's Retreat is being held at the White House Retreat Center on the bluffs overlooking the Mississippi River. It is a wonderful, 3-day, silent, guided retreat based on the spiritual exercises of St. Ignatius. Give it a chance and see what it can do for your life! White House operates on a free-will offering basis. For registration, call the White House Retreat Office – 314-416-6400 or go online at [www.whretreat.org](http://www.whretreat.org). On registering, inform them that you are with Assumption Parish. If you have questions, call Gayla A. at 314-578-2647 or Sue W. at 314-270-3954.

## FORMED

PICK OF THE WEEK

## The Crisis of Happiness

by Jim Owens, MA, LPC



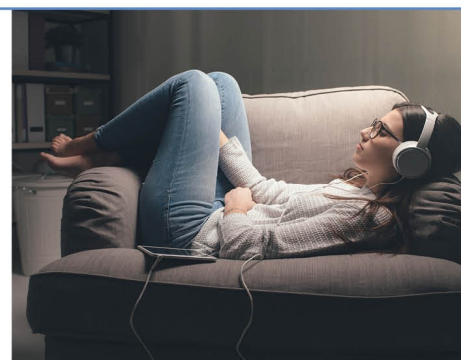
### Find Answers to Today's Happiness Crisis

Jim Owens gives scientific evidence about how addictions and distractions are hurting us and practical advice for how to overcome our wounds.

*"Engaging, and made me examine my life on a meaningful level."*

—Martin P., Tallahassee, FL

[LISTEN ON FORMED.ORG](http://LISTEN ON FORMED.ORG)



Register for your FREE Formed account at [assumptionstl.formed.org](http://assumptionstl.formed.org)! POWERED BY THE AUGUSTINE INSTITUTE