



# Our Lady of Perpetual Help Catholic Church



**8968 Highway 23, Belle Chasse, LA 70037 † 504-394-0314 † Fax: 504-394-0376**  
Web: [www.olphbc.org](http://www.olphbc.org) † Email: [churchoffice@olphbc.org](mailto:churchoffice@olphbc.org)

**OFFICE HOURS—Monday - Friday 9:00 a.m.—1:00 p.m.**  
Please call between these times for routine parish business.

## PASTORAL TEAM

**Rev. Kyle V. Dave, Pastor**  
[kdave@arch-no.org](mailto:kdave@arch-no.org)  
**Rev. William F. Maestri,**  
*Ministry of Sacraments & Education*  
**George “Ed” Merritt, Jr., Deacon**  
[emerritt@arch-no.org](mailto:emerritt@arch-no.org)  
**Brittany Breaux, School Principal**  
[bbreaux@olphbcschool.org](mailto:bbreaux@olphbcschool.org)  
**Dawn Bassett, Administrative Assistant**  
**Suzette Perrin, Coordinator of Religious Education and Adult Formation**  
[cre@olphbc.org](mailto:cre@olphbc.org)  
**Angel Boyd, Receptionist**  
**Debbie Fagnano, Director of Music Ministry**  
**TJ Lejeune & Kenneth Pouwels,**  
*Maintenance Supervisors*

## OLPH SCHOOL

8970 Highway 23 † 504-394-0757

## PARISH SCHOOL OF RELIGION

8968 Highway 23 † 504-394-0314

## K.C. HALL

9016 Highway 23, Belle Chasse, LA 70037

## MASS SCHEDULE

**Saturday** 7:30 a.m. & Vigil 4:00 p.m.  
**Sunday** 8:00 a.m. & 10:30 a.m.  
**Monday** 7:30 a.m.  
**Tuesday** 7:30 a.m. & 7:00 p.m.  
**Wednesday** 8:30 a.m. During the school year  
(7:30 a.m. when school is not  
in session)  
**Thursday** 7:30 a.m.  
**Friday** 7:30 a.m.  
**First Friday Adoration:** 8:00 a.m.—4:00 p.m.  
**Holy Days:** Consult the bulletin.

## SACRAMENT OF RECONCILIATION

5:30 p.m.—6:15 p.m.  
2:30 p.m.—3:30 p.m. or by appointment.

## SACRAMENT OF THE SICK (ANointing)

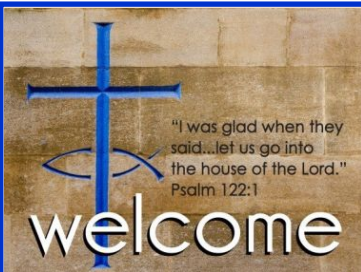
By appointment only

## MISSION STATEMENT

*We, the Church of Our Lady of Perpetual Help, are a living and growing Catholic community of faith, striving to follow and serve Christ. We are an evangelizing community, and we welcome others to fullness of life in Christ. With Mary we say “Yes” to God’s call to pray together, worship consciously, and serve joyfully.*

To visit our church website scan the QR code below:





## NEW PARISHIONERS

We welcome you to a very friendly and enthusiastic community. Please fill out the information in the Binder on the Welcome Table located in the back of church or register at the Church Office. A Census Form can also be found on our website at [www.olphbc.org](http://www.olphbc.org).

### Sacraments



**SACRAMENT OF BAPTISM:** Baptisms are usually celebrated on the fourth Sunday of the month during the 10:30 a.m. Mass. Due to demand, some months may be eliminated or another day or time may be chosen by the family if it is available on the church schedule of events." To begin the process, parents are encouraged to go to our website at [www.olphbc.org](http://www.olphbc.org) to access the forms under Sacraments and return the forms by email or drop off at the Church Office. Parents and godparents are required to attend a seminar prior to the Baptism. The Baptismal Seminar is held on the third Monday of the month at 7:00 p.m. in the Church Day Chapel. If you need more information or have questions, call the Rectory at (504) 394-0314 or email [cre@olphbc.org](mailto:cre@olphbc.org).

**SACRAMENT OF FIRST COMMUNION:** First Eucharist is celebrated the first Saturday of May for students in the 2nd grade or above. Children older than 2nd grade will be prepared on individual situations. The Sacrament of Reconciliation must be celebrated prior to Communion.

**SACRAMENT OF CONFIRMATION:** Confirmation is celebrated in the Fall of 11th grade. Candidates who attend Catholic high school or are enrolled in the High School of Religion program come together for Sacramental preparation. All candidates are asked to pre-register in their freshmen year and no later than December of their 10th grade year. Information and registration can be found on our website: [www.olphbc.org](http://www.olphbc.org).

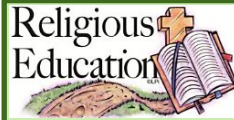
**SACRAMENT OF MARRIAGE:** Contact the Church Office at least nine months prior to the planned date. No other arrangements should be made before contacting the Church Office.

**For more information on any of our Sacraments, contact the Church Office or email [cre@olphbc.org](mailto:cre@olphbc.org).**



**VISITATION OF THE SICK:** Inform the Church Office when someone is sick, shut-in or hospitalized and unable to attend Mass.

**FUNERALS:** Inform the Church Office as soon as possible when someone in the family dies, preferably before contacting the funeral home.



### Religious Education

The mission of OLPH's Religious Education program is to bring the "Good News" of God's love to all children and their families and to call them to commit their lives to Christ. Religious Education is available for children in Kindergarten through adults. We encourage parents to be parishioners of OLPH when registering students for Religious Education classes. Census forms can be obtained from the Parish Office during regular business hours, on the Welcome Table located in the back of church or you can register online. Call the Church Office at (504) 394-0314, or email [cre@olphbc.org](mailto:cre@olphbc.org) for more information.

**SUNDAY LITURGY OF THE WORD:** Children in grades K-2nd are invited with a catechist during 10:30 a.m. Mass to the Day Chapel for the Liturgy of the Word for Children (September-May). A summary of the readings of the day is discussed on their level.

**PARISH SCHOOL OF RELIGION:** Our PSR program is divided in two parts. Family Faith Formation is the "academic" part with the textbook discussed at home as a family. Our Encountering Engaging Events are a chance to come together as a community to worship together, do crafts, or engage in traditional events like our Nativity Play and Living Way of the Cross.

**HIGH SCHOOL OF RELIGION:** Students in 9th through 12th grade not attending a Catholic High School are offered Faith Formation with academics at home, working at their own pace, but also some time to get together to discuss what they have learned with their peers about three times a year. It is intended to be an informal study with honest Catholic answers.

**RCIA:** Are you or someone you know interested in becoming Catholic or completing Sacraments? Please join our RCIA (Rite of Christian Initiation of Adults). We have a Year-Round RCIA process that you can enter into whenever you are ready. This is for you if you have never been baptized, if you have been baptized into another denomination and now want to become Catholic, or if you are an adult Catholic but have never been confirmed. Sessions will be held in person with day and time to be adjusted to personal schedules. For additional information and to register, contact the Church Office or email [cre@olphbc.org](mailto:cre@olphbc.org).

**Archdiocese of New Orleans Safe Environment—** Refer to the Web Site: <http://www.nolacatholic.org/safe-environment> for policies and procedures concerning safe environment and child protection.



## Scripture Readings & Events this Week

**Saturday, April 5, Jer 11:18-20; Ps 7:2-3, 9bc-10, 11-12; Jn 7:40-53**

Daily Mass, Church—7:30 a.m. (Fr. M)  
Confessions, Church—2:30 p.m.—3:30 p.m.  
Vigil Mass, Church—4:00 p.m. (Fr. M)  
Anointing of the Sick—All Masses (Postponed)

**Sunday, April 6, Fifth Sunday of Lent Is 43:16-21; Ps 126:1-2, 2-3, 4-5, 6; Phil 3:8-14; Jn 8:1-11; Scrutiny Readings: Ez 37:12-14; Ps 130:1-2, 3-4, 5-6, 7-8; Rom 8:8-11; Jn 11:1-45 or Jn 11:3-7, 17, 20-27, 33b-45**

Masses, Church—8:00 a.m. (Fr. K) & 10:30 a.m. (Fr. K)  
KC Blood Drive, KC Hall—8:30 a.m.—1:00 p.m.  
KC Mass—10:30 a.m.  
Children's Dismissal—10:30 a.m. Mass  
2nd Collection—Building & Maintenance Fund, All Masses  
Anointing of the Sick—All Masses (Postponed)

**Monday, April 7, Dan 13:1-9, 15-17, 19-30, 33-62 or 13:41c-62; Ps 23:1-3a, 3b-4, 5, 6; Jn 8:12-20**

Daily Mass, Day Chapel—7:30 a.m. (Fr. M)  
Church Office Hours—9:00 a.m.-1:00 p.m. or by Appointment  
Altar Society, KC Hall—6:30 p.m.

**Tuesday, April 8, Num 21:4-9; Ps 102:2-3, 16-18, 19-21; Jn 8:21-30**

Daily Mass, Day Chapel—7:30 a.m. (Fr. M)  
Church Office Hours—9:00 a.m.-1:00 p.m. or by Appointment  
Confessions, Church—5:30 p.m.—6:15 p.m.  
Novena—Mother of Perpetual Help, Church—6:50 p.m.  
Daily Mass, Church—7:00 p.m. (Fr. K)

**Wednesday, April 9, Dan 3:14-20, 91-92, 95; Dan 3:52, 53, 54, 55, 56; Jn 8:31-42**

Daily Mass, Church—8:30 a.m. (Fr. K)  
Church Office Hours—9:00 a.m.-1:00 p.m. or by Appointment  
PSR Living Way of the Cross, Church—5:00 p.m.  
Archdiocese-wide Confessions, Church—5:00 p.m.—6:30 p.m.

**Thursday, April 10, Gen 17:3-9; Ps 105:4-5, 6-7, 8-9; Jn 8:51-59**

Daily Mass, Church—7:30 a.m. (Fr. K)  
Church Office Hours—9:00 a.m.-1:00 p.m. or by Appointment  
Lenten Session, Cafeteria—7:00 p.m. (Fr. M)  
Choir Rehearsal, Church—7:00 p.m.

**Friday, April 11, Jer 20:10-13; Ps 18:2-3a, 3bc-4, 5-6, 7; Jn 10:31-42**

Daily Mass, Day Chapel—7:30 a.m. (Fr. M)  
Stations of the Cross, Church—8:30 a.m.  
Church Office Hours—9:00 a.m.-1:00 p.m. or by Appointment  
Riverbend Mass—10:00 a.m.  
KC Lenten Fish Fry, Behind KC Hall—5:30 p.m.—8:00 p.m.  
Daily Mass, Church—6:00 p.m.  
Stations of the Cross, Church—6:30 p.m.

**Saturday, April 12, Ez 37:21-28; Jer 31:10, 11-12abcd, 13; Jn 11:45-56**

Daily Mass, Church—7:30 a.m. (Fr. M)  
1st Reconciliation, Church—11:00 a.m.  
Confessions, Church—2:30 p.m.—3:30 p.m.  
Vigil Mass, Church—4:00 p.m. (Fr. K)

**Sunday, April 13, Palm Sunday of the Lord's Passion**

Masses, Church—8:00 a.m. (Fr. K) & 10:30 a.m. (Fr. M)

## Mass Intentions

**4/5, Saturday, 4:00 p.m.**— For the Parishioners

**4/6, Sunday, 8:00 a.m.**— Sally Allan, Amanda Lenau, Louise & Joseph Johnson, Richard & Anne Fowler, Rennie Coludrovich, Jr.

**4/6, Sunday, 10:30 a.m.**— Eva Vujnovich, Eugene D. Fagnano, Lucille Bernard, Darlene Boudet, Debbie Buras, Blaze St. Marie, Loredia Terrebonne, Jackie Cain, Donna Pobrica, Irwin Cooper, III, Paul LeBoeuf, Patricia Hingle McCarty, Theresa L. Bossier, Rosebud L. Dumesnil, Sandra Longley, Brigid Dufrene

**4/7, Monday, 7:30 a.m.**— For the intentions of the Priest

**4/8, Tuesday, 7:30 a.m.**— For the intentions of the Priest

**4/8, Tuesday, 7:00 p.m.**— Blaze St. Marie

**4/9, Wednesday, 8:30 a.m.**— For the intentions of the Priest

**4/10, Thursday, 7:30 a.m.**— Sandra Longley

**4/11, Friday, 7:30 a.m.**— Kate & Andrew Pobrica

**4/11, Friday, 6:00 p.m.**— Blaze St. Marie

**4/12, Saturday, 7:30 a.m.**— For the intentions of the Priest

**4/12, Saturday, 4:00 p.m.**— Jerry Pignoli, Dominick J. Sciortino, Alexandra "Allie" Boteler, Sandra Longley, Oliver & Margaret Koch, Donna Pobrica, Jacqueline Cain, Irwin Cooper, III, Wade & Barbara Bolotte, Larry Avist, Sr., Trena Avist, Avist & Wilson Families, Ferdinand Von Behren, Margaret Laughlin, Darrell Roy, David & Pam DeJean, Fay Dudenhefer, Nazimoya Fleming, Frank & Carolyn Salamone, George & Rosemary Sartis, Ellis Robeaux

**4/13, Sunday, 8:00 a.m.**— For the Parishioners

**4/13, Sunday, 10:30 a.m.**— Eva Vujnovich, Eugene D. Fagnano, Joyce C. Ehrhard, Lucille Bernard, Darlene Boudet, Blaze St. Marie, Doma Tesvich, Yuge Tesvich, Anka Cibilic, Mare Juricevic, Kate Pobrica, Jan Shapard, Zorka Pavlovic, Jacqueline Bubrig Cain, Debbie Buras, Patricia Hingle McCarty, Paul LeBoeuf, Leslie J. Casler, Jr., Brigid Dufrene



### Do Something Beautiful for God

April 12 — We have to love until it hurts. It is not enough to say, "I love." We must put that love into a living action. And how do we do that? By giving until it hurts.



**Archdiocese-wide Confessions** will be available in all parishes from 5:00 p.m.—6:30 p.m. during Lent on Wednesday, April 9, 2025.



### Pope Francis' Prayer Intentions for 2025

**April—For the Use of New Technologies**

Let us pray that the use of the new technologies will not replace human relationships, will respect the dignity of the person, and will help us face the crisis of our times.



## OLPH School News

### Mardi Gras Ball



OUR LADY OF PERPETUAL HELP

# SUMMER CAMP!

BEFORE CARE & AFTERCARE AVAILABLE

**JUNE 2 – JULY 25**



Outdoor games, treasure hunt, storytelling, petting zoo, interactive games, water slides, sports, and SO much more!

**Now offering WEEKLY sessions**

and Before & After Care

Register NOW ~ Limited Spots Available

Scan QR CODE to REGISTER

or Visit <https://school.olphbc.org>







### St. Vincent de Paul Food Pantry

We are in need of certain items for our food pantry. If you are able to donate, please place items in our bin in the back of Church. **Thank you for your help in feeding those in need.**

#### Our pantry currently needs the following items:

Canned Fruit (any kind)	Canned Soup (any kind)
Hormel Chili	Cereal (any kind)
Pork n Beans	Grits (small boxes)
Canned chicken	Oatmeal (small boxes)
Tuna Fish	Pancake Mix
Vegetable Soup	Pancake Syrup
Peanut Butter (large size)	

**ALL DONATIONS ARE WELCOMED AND APPRECIATED!!**

### Our Lady of Perpetual Help Catholic Church



invites you,  
in the Crucified and Risen Lord Jesus Christ,  
to the Triduum and Easter Celebrations:  
**Holy Thursday, April 17, 2025**  
Mass of the Lord's Supper at 7 PM,  
followed by Nocturnal Adoration in the Church  
**Good Friday, April 18, 2025**  
Celebration of the Passion of the Lord at 3 PM  
Stations of the Cross at 6 PM  
**Holy Saturday, April 19, 2025**  
Easter Vigil Mass at 8 PM  
**Easter Sunday, April 20, 2025**  
Masses at 7 AM, 9 AM, & 11 AM

If you are unable to attend, please visit our Facebook page to watch via livestreaming.

OLPH Church 504-394-0314 [www.olphbc.org](http://www.olphbc.org)



The annual **KC Easter Egg Hunt** will be on Easter Sunday morning, April 20, 2025 behind the church. It will take place between the 9:00 a.m. and 10:30 a.m. Masses, about 10:15 a.m. All of the children of the community are invited. Please bring a bag or basket for the kids.

**NOTE: Volunteers are needed to help set up. If interested, please call the church office.**



### Order of St. Louis IX Medallion

The St. Louis medallion is given to lay Catholics who have offered outstanding service to their local church parish or who have been involved in Archdiocesan ministry.

On Sunday, March 23, 2025, Archbishop Gregory Aymond presented the Order of St. Louis Medallion awards to 216 men and women at St. Catherine of Siena Church in Metairie. The ceremony included a prayer service and presentation of the medals.

**This year's OLPH recipients of the Order of St. Louis IX were Marie Amedee and Betty Farwell.** We would like to thank these award winners for their exceptional service and devotion to our faith community.



### Treasures From Our Tradition

Next weekend, many churches provide palms to be carried in the opening moments of the liturgy, as we gratefully recall Jesus' entry into the holy city of Jerusalem. The children who greeted him on that day used what was both handy and traditional, since palms were carried to inaugurate the joyful harvest feast of

Succoth. To this day, faithful Jews are directed to take a beautiful palm branch, green and straight as possible, called a *lulav*, and bind it with three myrtle branches fifteen inches long, and two longer willow branches. At the end of the temple service, everyone carries the *lulav*, circling the sanctuary in a dance called the *Hoshanot*, singing hymns of joy.

In other climates, Jews and Christians alike have had to make accommodations over the years. In Italy, everyone carries olive branches today, often brought from their own garden. In England, forsythia branches are preferred, a relative of the olive, sign of peace. Germans prefer pussywillows, and others look for flowering spring branches. In our part of the world, what do you think would be the best choice to express joy and welcome, and to remind us of the joy of Christ's victory even as we prepare to commemorate his passion?—James Field



### Lenten Fish Fry Fridays

5:30 pm - 8 pm  
Drive-Thru Only  
at the BC KC Hall



### EASTER FLOWERS

We are accepting donations toward Easter flowers used in Church. Donation envelopes are available on the information table. Please write clearly on the envelope so that the memorial may be published in the bulletin.

**Next Sunday is Palm Sunday  
of the Passion of the Lord**

**The procession with Palms: Luke 19:28-40.** Blessed is he who comes in the name of the Lord.

**Isaiah 50:4-7.** I did not cover my face against insult and I know I will not be ashamed.

**Philippians 2:6-11.** He humbled himself to become like us and God raised him on high.

**Luke 22:14—23:56.** The passion of our Lord Jesus Christ.



*The Sanctuary Light by the tabernacle burns to remind us of the sacramental presence of Jesus Christ. It is a mark of honor to remind the faithful of the presence of Christ, and is a profession of their love and affection.*

The Sanctuary Light will burn this week in loving memory of: **Sandra Longley**, requested by David & Ann Vallot; **Loredia Terrebbonne**, requested by The Kennair Family; and **Margaret Laughlin**, requested by Dolly Roy.

*If you would like to have the Sanctuary Light burn in memory of a loved one, call the Church Office. The donation for the Sanctuary Light is \$10.*

**Sponsor of the Week: West Plumbing**



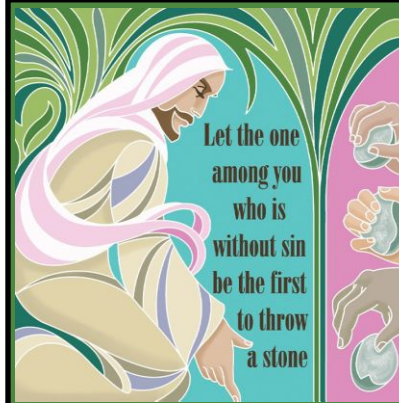
**WEST  
SERVICES**

PLUMBING + MECHANICAL + CONSTRUCTION

**Greg West**

**504-382-0973**

Look to the back now! Look and remember to support these businesses when you need a product or service. Also, tell them "thank you" for their interest in Our Lady of Perpetual Help.



**God's Justice**

The story of Jesus and the woman caught in adultery is sometimes considered as a put-down of the scribes and Pharisees. While their motive for bringing the woman to Jesus was to test him, they were technically trying to uphold the law. But they were hoping to get Jesus to cause a scandal by refuting the law, or, if he upheld the law, the woman would be killed with Jesus' approval.

Jesus had a better idea. He shows that God's justice is mercy and forgiveness. When he told them that the one without sin could be first to throw a stone, he knew that they all were sinners one way or another. And a sinner could not judge another sinner. He also knew that someone whose sins were forgiven would be willing to forgive the woman.

That's what St. Paul means in the second reading when he says he did not have "any righteousness of my own based on the law, but that which comes through faith in Christ" (Philippians 3:9). He says he has given up the idea of making himself righteous (right with God) by keeping the laws of his people. Now he depends on his faith in Christ and Christ's forgiveness, which was shown in his death and resurrection. He is even willing to follow Christ in suffering and eventually death, so that he too can share the Resurrection. Why did Paul come to this kind of faith? Because he had been forgiven for persecuting Christians. And he had persecuted them, not because he was evil, but because he thought he was keeping the law.

Jesus probably surprised the woman when he let her go. He was the only one who could have judged her, but he chose to forgive. Just as the woman was changed by the mercy of Christ, Paul too was affected by being forgiven by the One whom he was persecuting (Acts 9:4). So is keeping the law a bad thing? No, but the important thing is why we keep the law. We can do it like the Pharisees—keeping the law as a status symbol: "I'm too good (or too important) to break the law." Or we can choose to follow Jesus' way of love. Then we still keep the laws and commandments, only because they are examples of how to love God and love each other. For we too have been forgiven by Jesus on the cross. As we approach Holy Week, let us remember how much Jesus has done for us.

Tom Schmidt

**Stewardship**  
*All things are possible with God.*



Devote Time



Share Talent



Give Treasure



A way of life

**Church Financials  
Year to Date through January 31, 2025**

	Operating	Maintenance	Cap. Campaign	Total
Income before Fair, Maint. & Capital	310,391			310,391
Fair Proceeds	91,000			91,000
Maintenance Monthly Collections		36,213		36,213
Capital Campaign Collections			11,131	11,131
Expenses	(420,770)	(94,246)	(86,116)	(601,132)
<b>Total YTD Actuals</b>	<b>\$ (19,379)</b>	<b>\$ (58,033)</b>	<b>\$ (74,985)</b>	<b>\$ (152,397)</b>

*Thank you to our parish family members who faithfully support our parish. May God bless you for your generosity!*

**Online Giving Is Available on Our Website at [www.olphbc.org](http://www.olphbc.org)** (click on Give Online), or simply scan the QR code with your phone. You can easily create your donation account online and make changes at any time.







## Straight Talk

by: Father William Maestri

### What a FRIEND!

The Gospel of John, symbolized by the Eagle, can leave us reaching for the Dramamine in order to combat the spiritual vertigo. This Gospel lifts us to heights beyond the outer limits. John elevates us spiritually into the very presence of the "Ancient One" (Dn 7:9-14). And it descends into the Word becoming flesh! (Jn 1:14). This roller coaster of peaks and valleys upsets our digested understanding of God and human existence. The Navigator of this deep descent and rapid ascent is the babe in a manger, AND the Lord in

whom "dwells the whole fullness of the deity [and] seated at the right hand of God." (Col 2:9; 3:1).

The down and up is fueled by high octane LOVE; the love by the Father for all creation, and the proof of the Father's love is: "he gave his only Son, so that everyone who believes in him might have eternal life." (Jn 3:16).

The supreme revelation of God's love - a faithful love to the end (Jn 13:1) - unfolds the night before Jesus dies. He tells the disciples they (WE) are to be the FRIENDS of God, AND God desires to be OUR FRIEND! (Jn 15:11-14).

What is most shocking about Jesus' words is that God passionately desires to be our friend. For Aristotle, whom St. Thomas Aquinas refers to as THE PHILOSOPHER, the idea that God would desire our friendship is absurd. Granted, friendship is essential for a happy human life, but never for God? Why? Because God is the fullness of Being. God is perfectly Self-Sufficient and does not desire or need anything outside Himself. God is fully ACTUALIZED, hence there is NO POTENTIAL; no part of God is lacking; deficient. (See Aristotle's masterpiece, NICOMACHEAN ETHICS, Book viii, "Friendship").

St. Thomas, for all his admiration of Aristotle, separated over the issue of friendship between God and humanity. St. Thomas concedes, "There is nothing on earth more to be prized than true friendship...the greatest pleasure, and without friends even the most agreeable pursuits become tedious." (See SUMMA THEOLOGAE: Question 23, Article 1; Question 25, Article1; Question 26, Article 3).

The grace that unites God and humanity in friendship is the Theological Virtue of Charity. Through this Divine gift, Charity, we do not simply know ABOUT God, but we participate in the very Being of the Trinity - the Beatific Vision (Catechism, Nos. 1720-24). This blessed vision of God begins on earth, for as we grow deeper in love with God, we become in solidarity with the "least among us" (Mt 25: 31-46; Catechism, Nos. 1883, 1885, 1894, 2209).

Friendship with God is not only north to south but east to west - horizontal and vertical, +, the Cross.

The lyrics of the old Protestant hymn come to heart:

What a friend we have in Jesus  
All our sins and griefs to bear  
What privilege to carry  
Everything to God in prayer  
Can we find a friend so faithful  
Who will all our sorrows share?  
Jesus knows our every weakness  
Take it to the Lord in prayer.  
(Joseph M. Scriven, 1855)



**MADERE & SONS TOWING**  
DEEP SOUTH COMPANIES

**504-392-0554**

**PLAQUEMINES MEDICAL CENTER**

PHONE: (504) 564-3344  
FAX: (504) 564-0174  
27136 HIGHWAY 23, PORT SULPHUR, LA 70083

**Mothe**  
Funeral Homes, LLC

Six Generations of Our Family Serving Your Family Since 1895  
Planning TODAY to Help Your Family TOMORROW...  
For more information call (504) 366-4343.  
www.motheffunerals.com

**EWTN.COM/RADIO**

**EWTN** Global Catholic Radio  
TUNE IN

**Knights of Columbus**

FATHER PETER P. BOERDING COUNCIL No. 6357  
For Membership Call Rodney Schaubhut, Sr., GK  
RodSchaubhut@gmail.com • 504-376-3080  
Meetings 2<sup>nd</sup> Wed. Each Month 7:00 pm  
Council Home

**Get this bulletin emailed to you every week.**

Simply go to  
www.DM.CHURCH/5049...or scan

DISCOVERMASS

**Bayou Tide Inc.**

Brent & Kathy Laliberte, Owners  
1700 Belle Chasse Hwy., Ste. A #200 393-0315

**ROBERTSON ROOFING AND SIDING, INC.**

Gerard Robertson, Jr., Estimator  
900 Woodland Hwy. • 504-394-7200  
gerardjr@robertsonroofinginc.com

**WEST SERVICES**

PLUMBING + MECHANICAL + CONSTRUCTION

Greg West 504-382-0973

**ADVERTISE HERE**

Promote your Business AND support your Parish.

Ray Kelly ~ 504-338-3058  
rkelly@diocesan.com



**RUSO'S PHARMACY** Sean & Jenny Surrency Owners  
Fast Friendly Service  
Good Neighbor Pharmacy  
M-F 8am-6pm  
Sat. 9am-2pm  
7902 Hwy. 23  
**394-4444** www.mynpn.com/russospharmacy

**BELLE CHASSE VETERINARY CLINIC, INC.**  
Dr. C. Duplechain  
Dr. A. Page  
**394-4516**  
8566 HWY. 23

**Salvo's SEAFOOD** Est. 1984  
Open on Sundays during crawfish season  
Dine In or Take Out • Fresh & Boiled  
7742 Hwy 23 • **504-393-7303**  
www.salvosseafood.com

**Belle Chasse Cabinet Works**  
Custom Cabinetry & Design  
www.bccw.net  
**394-4870**  
1500 WOODLAND HWY.

**CLEAN FLEET** AUTO BODY WEST  
Metro New Orleans most recommended shop is now in Belle Chasse  
Formerly JP's Auto Body, JP and Susan finally retired, however the rest of the team is still the same.  
7248 Highway 23  
Belle Chasse LA 70037  
**504-394-6767**

**Chevron** **Guilbeau's Convenience Store & Deli**  
Port Sulphur, LA

**GOURMET BUTCHER BLOCK**

**DEBONED CHICKEN & TURKEY & PRESEASONED MEATS**  
*A Cajun Meat Market*  
Turducken • Deboned Stuffed Chicken  
Deboned Stuffed Turkey  
Homemade Boudin • Stuffed Pork Chops  
Stuffed Duck • Stuffed Quail  
Stuffed Rabbit • Shish Kabobs  
Stuffed Pork Roast • Stuffed Beef Roast  
Stuffed Boneless Pork Loin • Stuffed Brisket  
**Glenn & Leah Mistich, Owners**  
**392-5700**  
2144 Belle Chasse Hwy., Gretna

**PIVACH**  
— attorneys at law —  
BELLE CHASSE COVINGTON  
504-394-1870  
www.pivachlaw.com

**R.R.T.**  
Oilfield Rentals & Service  
Locations in Belle Chasse & Lafayette  
Telephone: **800-500-6670**

**C&C Machine**  
504-362-7205  
www.ccmachineshop.com

**#ThankYouForYourPriesthood**

**Mississippi River**  
Division of Merchants & Marine Bank  
**504-392-1111**

**EMILY LACOUR, DDS**  
(504) 433-2092  
27136 Highway 23, Suite 414  
Port Sulphur, LA 70083  
OFFICE HOURS:  
Monday and Friday 8am-5pm  
Tuesday, Wednesday & Thursday 8am-3pm

**Fremin's Food Market**  
Mon-Sat: 7AM to 7PM  
Sun: 8AM to 12PM  
26277 Hwy 23  
Port Sulphur, LA

**Riverbend**  
Nursing & Rehabilitation Center  
Quality Care - Close to Home  
13735 Hwy. 23 **656-0068**

**BP&P**  
BOWES, PETKOVICH & PALMER, LLC  
504-368-2700  
BPP-LAW.COM

**COLDWELL BANKER** TEC  
**THE BONNIE BURAS TEAM**  
Bonnie Buras & Emily B. Hoskin  
504.392.0022  
BonnieBurasTeam@gmail.com  
Each Office Independently Owned & Operated. Licensed in LA.

**Edward Jones**  
JEFF WOOTON, FINANCIAL ADVISOR  
7614 Hwy. 23, Ste. A  
Belle Chasse, LA 70037  
Bus. 504-392-3977 • TF 844-258-7762  
Cell 504-289-3271 • Fax 855-379-5740  
edwardjones.com/jeff-wooton  
jeff.wooton@edwardjones.com

**Holiday Inn Express**  
AN IHG® HOTEL  
2433 Manhattan Blvd. • Harvey, LA

**State Oil Fuel Center**  
FAMILY-OWNED & OPERATED SINCE 1997  
We served you through hurricanes, fuel shortage, fires, & holidays.  
We Are Here For You 24 hours a day. 365 days a year.  
Plaquemines Owned Plaquemines Proud

**RIVERSIDE HOTEL**  
www.RiversideBelleChasse.com  
8280 Hwy. 23 **391-0133**

**Adams Catfish House**  
LUNCH MON-FRI 11-2 & DINNER THURS-SAT 5-9  
8523 Hwy. 23 **392-0541**

**catholicmatch Louisiana**  
CatholicMatch.com/goLA

**INSTEP CREDIT UNION**  
Guiding our communities to bold new financial horizons since 1948

**BBC** BALLAY, BRAUD & COLON, PLC  
ATTORNEYS AT LAW  
EST. 1980  
504.394.9841  
8114 Hwy. 23 Belle Chasse, LA 70037

**ROUBION'S TIRE & AUTO CENTER, INC.**  
Front End Alignment • AC Repair  
Oil Change & Brake Tags  
**BRIDGESTONE MICHELIN GOODYEAR**  
7566 Hwy. 23 **392-8861**

**INSTEP CREDIT UNION**  
504-394-5574  
instepmembers.com