



# Our Lady of Perpetual Help Catholic Church



**8968 Highway 23, Belle Chasse, LA 70037 † 504-394-0314 † Fax: 504-394-0376**  
Web: [www.olphbc.org](http://www.olphbc.org) † Email: [churchoffice@olphbc.org](mailto:churchoffice@olphbc.org)

**OFFICE HOURS—Monday - Friday 9:00 a.m.—1:00 p.m.**  
Please call between these times for routine parish business.

## PASTORAL TEAM

**Rev. Kyle V. Dave, Pastor**  
[kdave@arch-no.org](mailto:kdave@arch-no.org)  
**Rev. William F. Maestri,**  
*Ministry of Sacraments & Education*  
**George "Ed" Merritt, Jr., Deacon**  
[emerritt@arch-no.org](mailto:emerritt@arch-no.org)  
**Brittany Breaux, School Principal**  
[bbreaux@olphbcschool.org](mailto:bbreaux@olphbcschool.org)  
**Dawn Bassett, Administrative Assistant**  
**Suzette Perrin, Coordinator of Religious Education and Adult Formation**  
[cre@olphbc.org](mailto:cre@olphbc.org)  
**Angel Boyd, Receptionist**  
**Debbie Fagnano, Director of Music Ministry**  
**TJ Lejeune & Kenneth Pouwels,**  
*Maintenance Supervisors*

## OLPH SCHOOL

8970 Highway 23 † 504-394-0757

## PARISH SCHOOL OF RELIGION

8968 Highway 23 † 504-394-0314

## K.C. HALL

9016 Highway 23, Belle Chasse, LA 70037

## MASS SCHEDULE

**Saturday** 7:30 a.m. & Vigil 4:00 p.m.  
**Sunday** 8:00 a.m. & 10:30 a.m.  
**Monday** 7:30 a.m.  
**Tuesday** 7:30 a.m. & 7:00 p.m.  
**Wednesday** 8:30 a.m. During the school year  
(7:30 a.m. when school is not  
in session)  
**Thursday** 7:30 a.m.  
**Friday** 7:30 a.m.  
**First Friday Adoration:** 8:00 a.m.—4:00 p.m.  
**Holy Days:** Consult the bulletin.

## SACRAMENT OF RECONCILIATION

**Tuesday** 5:30 p.m.—6:15 p.m.  
**Saturday** 2:30 p.m.—3:30 p.m. or by appointment.

## SACRAMENT OF THE ANOINTING OF THE SICK

By appointment only

## MISSION STATEMENT

*We, the Church of Our Lady of Perpetual Help, are a living and growing Catholic community of faith, striving to follow and serve Christ. We are an evangelizing community, and we welcome others to fullness of life in Christ. With Mary we say "Yes" to God's call to pray together, worship consciously, and serve joyfully.*

To visit our church website scan the QR code below:





## NEW PARISHIONERS

We welcome you to a very friendly and enthusiastic community. Please fill out the information in the Binder on the Welcome Table located in the back of church or register at the Church Office. A Census Form can also be found on our website at [www.olphbc.org](http://www.olphbc.org).

### Sacraments



**SACRAMENT OF BAPTISM:** Baptisms are usually celebrated on the fourth Sunday of the month during the 10:30 a.m. Mass. Due to demand, some months may be eliminated or another day or time may be chosen by the family if it is available on the church schedule of events." To begin the process, parents are encouraged to go to our website at [www.olphbc.org](http://www.olphbc.org) to access the forms under Sacraments and return the forms by email or drop off at the Church Office. Parents and godparents are required to attend a seminar prior to the Baptism. The Baptismal Seminar is held on the third Monday of the month at 7:00 p.m. in the Church Day Chapel. If you need more information or have questions, call the Rectory at (504) 394-0314 or email [cre@olphbc.org](mailto:cre@olphbc.org).

**SACRAMENT OF FIRST COMMUNION:** First Eucharist is celebrated the first Saturday of May for students in the 2nd grade or above. Children older than 2nd grade will be prepared on individual situations. The Sacrament of Reconciliation must be celebrated prior to Communion.

**SACRAMENT OF CONFIRMATION:** Confirmation is celebrated in the Fall of 11th grade. Candidates who attend Catholic high school or are enrolled in the High School of Religion program come together for Sacramental preparation. All candidates are asked to pre-register in their freshman year and no later than December of their 10th grade year. Information and registration can be found on our website: [www.olphbc.org](http://www.olphbc.org).

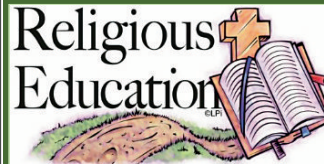
**SACRAMENT OF MARRIAGE:** Contact the Church Office at least nine months prior to the planned date. No other arrangements should be made before contacting the Church Office.

**For more information on any of our Sacraments, contact the Church Office or email [cre@olphbc.org](mailto:cre@olphbc.org).**



**VISITATION OF THE SICK:** Inform the Church Office when someone is sick, shut-in or hospitalized and unable to attend Mass.

**FUNERALS:** Inform the Church Office as soon as possible when someone in the family dies, preferably before contacting the funeral home.



### Religious Education

The mission of OLPH's Religious Education program is to bring the "Good News" of God's love to all children and their families and to call them to

commit their lives to Christ. Religious Education is available for children in Kindergarten through adults. We encourage parents to be parishioners of OLPH when registering students for Religious Education classes. Census forms can be obtained from the Parish Office during regular business hours, on the Welcome Table located in the back of church or you can register online. Call the Church Office at (504) 394-0314, or email [cre@olphbc.org](mailto:cre@olphbc.org) for more information.

**SUNDAY LITURGY OF THE WORD:** Children in grades K-2nd are invited with a catechist during 10:30 a.m. Mass to the Day Chapel for the Liturgy of the Word for Children (September-May). A summary of the readings of the day is discussed on their level.

**PARISH SCHOOL OF RELIGION:** Our PSR program is divided in two parts. Family Faith Formation is the "academic" part with the textbook discussed at home as a family. Our Encountering Engaging Events are a chance to come together as a community to worship together, do crafts, or engage in traditional events like our Nativity Play and Living Way of the Cross.

**HIGH SCHOOL OF RELIGION:** Students in 9th through 12th grade not attending a Catholic High School are offered Faith Formation with academics at home, working at their own pace, but also some time to get together to discuss what they have learned with their peers about three times a year. It is intended to be an informal study with honest Catholic answers.

**OCIA (aka RCIA):** Are you or someone you know interested in becoming Catholic or completing Sacraments? If so, please join our OCIA (Order of Christian Initiation of Adults). We have a Year-Round OCIA process that you can enter into whenever you are ready. Everyone can work at their own pace and attend gatherings as they like. Sharing our faith with one another is a huge part of our Baptismal call. This is for you if you have never been baptized, if you have been baptized into another denomination and now want to become Catholic, or if you are an adult Catholic but have never been confirmed. Sessions will be held in person with day and time to be adjusted to personal schedules. For additional information or to register, you can contact Suzette Perrin at the Church Office (504) 394-0314 or send an email to [cre@olphbc.org](mailto:cre@olphbc.org).



## Scripture Readings & Events this Week

**Saturday, August 9, Dt 6: 4-13; Ps 18: 2-3a, 3bc-4, 47 and 51; Mt 17:14-20**

Daily Mass, Day Chapel—7:30 a.m. (Fr. M)  
Confessions, Church—2:30 p.m.—3:30 p.m.  
Vigil Mass, Church—4:00 p.m. (Fr. K)

**Sunday, August 10, Nineteenth Sunday in Ordinary Time; Wis 18:6-9; Ps 33:1, 12, 18-19, 20-22; Heb 11:1-2, 8-19 or Heb 11:1-2, 8-12; Lk 12:32-48 or Lk 12:35-40**

Masses, Church—8:00 a.m. (Fr. K) & 10:30 a.m. (Fr. M)  
**2nd Collection—Catholic Relief Services (All Masses)**

**Monday, August 11, Memorial of Saint Clare, Virgin; Dt 10:12-22; Ps 147:12-13, 14-15 19-20; Mt 17:22-27**

Daily Mass, Day Chapel—7:30 a.m. (Fr. M)  
Church Office Hours—9:00 a.m.-1:00 p.m. or by Appointment  
Gospel of John Class, KC Hall—7:00 p.m. (Fr. M)

**Tuesday, August 12, Dt 31:1-8; Dt 32:3-4ab, 7, 8, 9 and 12; Mt 18:1-5, 10, 12-14**

Daily Mass, Day Chapel—7:30 a.m. (Fr. M)  
Church Office Hours—9:00 a.m.-1:00 p.m. or by Appointment  
Confessions, Church—5:30 p.m.—6:15 p.m.  
Novena—Mother of Perpetual Help, Day Chapel—6:50 p.m.  
Daily Mass, Church—7:00 p.m. (Fr. K)

**Wednesday, August 13, Dt 34:1-12; Ps 66:1-3a, 5 and 8, 16-17, Mt 18:15-20**

Daily Mass, Church—7:30 a.m. (Fr. K)  
Church Office Hours—9:00 a.m.-1:00 p.m. or by Appointment  
KC Meeting, KC Hall—6:30 p.m.

**Thursday, August 14, Memorial of Maximilian Kolbe, Priest and Martyr; Jos 3: 7-10a, 11, 13-17; Ps 114: 1-2, 3-4, 5-6; Mt 18:21-19:1**

Daily Mass, Church—7:30 a.m. (Fr. K)  
Church Office Hours—9:00 a.m.-1:00 p.m. or by Appointment

**Friday, August 15, Solemnity of the Assumption of the Blessed Virgin Mary; Vigil: 1 Chr 15:3-4, 15-16; 16:1-2; Ps 132:6-7, 9-10, 13-14; 1 Cor 15:54b-57; Lk 11:27-28; Day: Rv 11:19a; 12:1-6a, 10ab; Ps 45:10, 11, 12, 16; 1 Cor 15:20-27; Lk 1:39-56**

Assumption Mass, Day Chapel—7:30 a.m. (Fr. M)  
Church Office Closed  
Assumption Mass, Church—8:30 a.m. (Fr. K)  
Riverbend Mass—10:00 a.m.  
Assumption Mass, Church—7:00 p.m. (Fr. K)

**Saturday, August 16, Jos 24:14-29; Ps 16:1-2a and 5, 7-8, 11, Mt 19:13-15**

Daily Mass, Day Chapel—7:30 a.m. (Fr. M)  
Confessions, Church—2:30 p.m.—3:30 p.m.  
Vigil Mass, Church—4:00 p.m. (Fr. K)  
St. Vincent de Paul Quarterly Mass—4:00 p.m.

**Sunday, August 17, Twentieth Sunday in Ordinary Time**

Masses, Church—8:00 a.m. (Fr. K) & 10:30 a.m. (Fr. M)  
**2nd Collection—Capital Campaign (All Masses)**  
KC Membership Drive (All Masses)  
PSR Registration (All Masses)  
Confirmation Class, Church—5:00 p.m.—6:30 p.m.

## Mass Intentions

**8/9, Saturday, 4:00 p.m.**— For the Parishioners

**8/10, Sunday, 8:00 a.m.**— Amanda Luneau, Louise & Joseph Johnson, Johnny Pennison, Don Bernard, Lois Dufrene, Cathy Madere, Lois Danos Becnel, Evan Michael Johnson

**8/10, Sunday, 10:30 a.m.**— Blaze St. Marie, Jacqueline Cain, Brigid & Harry Dufrene, Francis Gainey, Samuel Tague, Amy Pignuolo Armstrong, Lucille Bernard, Darlene Boudet, Brian North, Leroy Webre, Dade & Dorothy Vincent, Leslie Beyer, Evan Michael Johnson, Walter Collins, Lillian Roth McCloskey, Michael J. Lambert, Sr.

**8/11, Monday, 7:30 a.m.**— For the intentions of the Priest

**8/12, Tuesday, 7:30 a.m.**— For the intentions of the Priest

**8/12, Tuesday, 7:00 p.m.**— Blaze St. Marie

**8/13, Wednesday, 7:30 a.m.**— Evan Johnson

**8/14, Thursday, 7:30 a.m.**— For the intentions of the Priest

**8/15, Friday, 8:30 a.m.**— Evan Johnson

**8/15, Friday, 7:00 p.m.**— For the intentions of the Priest

**8/16, Saturday, 7:30 a.m.**— For the intentions of the Priest

**8/16, Saturday, 4:00 p.m.**— Jerry Pignuolo, Oliver & Margaret Koch, Sandra “Sandy” Longley, Jacqueline Bubrig Cain, Francis Gainey, Alexandra “Allie” Boteler, Amy Pignuolo Armstrong, Samuel Tague, Darrell Roy, Larry Avist, Sr., Trena Avist, Avist & Wilson Families, Jemi Lynn Carlone, Irwin Cooper, III, Charles “Red” Adam, Jr., Deacon “Pete” Moore, Leonard & Leona Klock, Evan Michael Johnson, Walter Collins, Ferdinand Von Behren, Ruth & Bob Bostick, Mabel & Bernard Becnel

**8/17, Sunday, 8:00 a.m.**— For the Parishioners

**8/17, Sunday, 10:30 a.m.**— Joyce C. Ehrhard, Rosemary (Schaubhut) Hebert, Pat & Dolly Stakelum, Blaze St. Marie, Samuel Tague, Lucille Bernard, Darlene Boudet, Brian North, Leroy Webre, Leslie Beyer, Evelyn Mistich, Evan Michael Johnson, Lillian Roth McCloskey, Michael J. Lambert, Sr.



**Pope Leo's  
Prayer Intentions for 2025**  
*August—For Mutual Coexistence*

Let us pray that societies where coexistence seems more difficult might not succumb to the temptation of confrontation for ethnic, political, religious or ideological reasons.



## OLPH Summer Camp 2025

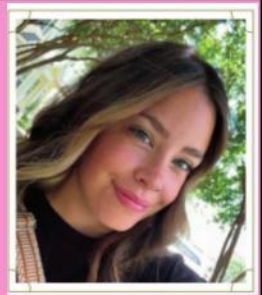


## OLPH School News

### Meet our School Family—2025-26



**Foundation  
Studio**  
(6 Weeks—  
12 Months)



Ms. Errica Ingraham is going on her 4th year with us and brings over 20 years of experience working with infants. Her patience, knowledge, and gentle heart help create a nurturing environment where our little ones can thrive.

Ms. Gracey Barber joined our OLPH family last year in our after-care program, and we are thrilled that this year she will be stepping into the role of co-teacher alongside Ms. Errica in the infant room. Her joyful spirit and loving care make her such a blessing to our team.

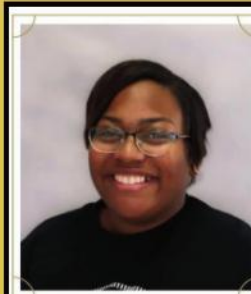


**Arise  
Studio**  
(12 Months  
-24  
Months)



Ms. Hannah Bassett is going on her 4th year with OLPH, and her creativity, patience, and big heart make every day in PK1/PK2 an adventure.

Mrs. Mandi Sumera is entering her first year with us, and she has already jumped in with excitement, ready to love and guide our tiniest movers and shakers.



**Guiding  
Lights  
Studio**  
(2 Years—  
3 Years)



Ms. Lashon Scott is going on her 3rd year with OLPH. She is funny, full of energy, and always ready to keep up with our little ones who spend more time running than walking! Her vibrant personality makes her classroom a joyful place where learning and laughter go hand in hand.

Ms. Amy Henry is beginning her 2nd year with OLPH. She brings a warm, nurturing presence and a gentle spirit that helps each child feel safe, supported, and ready to grow.





## PSR Registration after All Masses August 16<sup>th</sup>-17<sup>th</sup> and August 23<sup>rd</sup>-24<sup>th</sup>

Parish School of Religion Catechists will be available to take your Registration Forms and Fees **after all Masses** during the weekends of **August 16<sup>th</sup>-17<sup>th</sup> and August 23<sup>rd</sup>-24<sup>th</sup>**. Hard copies of the forms can be found on the information table in the back of the Church. Children in **grades Kindergarten—8<sup>th</sup> grades** are eligible for PSR sessions.

If your family is new to PSR, please complete the **New Student Form** for each child. **ALL registrants need the Family Registration Form.** Checks can be made out to **OLPH Church**. Exact cash is also accepted. **Calendar handouts** for the PSR 25-26 year are also available. Registering by August 24<sup>th</sup> ensures that our grade level books can be ordered and received from Loyola Press in a timely manner for the start of the PSR sessions in early September.

*Thank you for registering ahead of the first sessions.*

## Parish School of Religion Registration

Our Parish School of Religion (PSR; also known as CCD) is accepting registration for the 2025-26 school year. We are again using **the Family Faith Formation or Family Catechesis** format, having twice monthly opportunities to gather for activities, plays and Family Masses. Families will continue to work from home at their own pace with the textbook and online quizzes through Loyola Press. This year, Parent Sessions will be held concurrently when students are in person. This will help foster total family catechesis and faith understanding.

Registration forms can be found on our website at <https://olphbc.org/psr-registration-information> and can be handed in at the parish office or placed in the Church's Parcel Drop Box (behind the Rectory), or in the collection basket (marked PSR, Attn. Suzette Perrin), or mailed in. Below is the amount for the fee. The fee pays for the cost of the books, supplies for the teachers, costumes, certificates and other miscellaneous items. If you have any questions, please feel free to contact Suzette Perrin at [cre@olphbc.org](mailto:cre@olphbc.org) or call the parish office at 504-394-0314.

### REGULAR REGISTRATION

#### PAID between July—August 24, 2025

1 Student	\$70.00
2 Students	\$85.00
3 or Family	\$100.00

### LATE REGISTRATION

#### PAID after August 24, 2025

1 Student	\$80.00
2 Students	\$95.00
3 or Family	\$110.00

## 2025 OLPH Fair News

Friday, October 10, 2025—Sunday, October 12, 2025



### FAIR CHAIR COMMITTEE

Gary & Amie Hebert  
Theresa Hua  
Kacie Thibodeaux  
Amy Adams  
Stephen & Jenn Bowman  
Caleb & Alex Sisson  
Jerry & Mandi Sumera  
Eli & Anita Volk

## FAIR SPONSORSHIP LEVELS

If you would like to sponsor, please visit [www.olphbc.org](http://www.olphbc.org) fair page for the form

### PRESENTING SPONSOR: \$5,000.00

- Name/Logo on the front of the Fair shirt
- Signage on the Main Stage
- Everything included in the Platinum sponsorship
- Only 1 available! Call us to secure your spot!**

### PLATINUM SPONSOR: \$2,000.00

- Full Color Large Stage Banner
- Full Color Highway Banner
- Electronic Ad on OLPH Marquis on Hwy. 23
- T-Shirt Advertisement
- Parish Bulletin Insert Recognition
- Recognition in School Newsletter
- P.A. Recognition During Fair

### GOLD SPONSOR: \$1,500.00

- Full Color Highway Banner
- Electronic Ad on OLPH Marquis
- T-Shirt Advertisement
- Parish Bulletin Insert Recognition
- P.A. Recognition During Fair

### SILVER SPONSOR: \$750.00

- Full Color Highway Banner
- Parish Bulletin Insert Recognition
- P.A. Recognition During Fair

### BRONZE SPONSOR: \$300.00

- Booth Sign
- Parish Bulletin Insert Recognition
- P.A. Recognition During Fair

If you are interested in a different type of sponsorship or adding anything onto your package, please let us know!

*Next Sunday is the  
Twentieth Sunday in Ordinary Time*

**Jeremiah 38:4-6, 8-10.** You bore me to be a man of strife for the whole world.

**Hebrews 12:1-4.** Let us bear patiently the struggle placed upon us.

**Luke 12:49-53.** I have come not to give peace, but discord.



*The Sanctuary Light by the tabernacle burns to remind us of the sacramental presence of Jesus Christ. It is a mark of honor to remind the faithful of the presence of Christ, and is a profession of their love and affection.*

The Sanctuary Light will burn this week in loving memory of: **Charles "Red" Adam, Jr.**, requested by Dolly Roy; and **Evan Michael Johnson**, requested by Phil & Suzanne Taylor.

*If you would like to have the Sanctuary Light burn in memory of a loved one, call the Church Office. The donation for the Sanctuary Light is \$10.*

**Sponsor of the Week:**



Look to the back now! Look and remember to support these businesses when you need a product or service. Also, tell them "thank you" for their interest in Our Lady of Perpetual Help.



The flowers in church this week were donated in loving memory of: **Oliver & Margaret Koch**, requested by Children.

*Church Flowers—Anyone who wishes to donate the flowers in church in memory of a loved one for a particular weekend may call the church office. The donation is \$50 payable to the Altar Society.*



**HURRICANE PRAYER:** Our Father in heaven, through the powerful intercession of Our Lady of Prompt Succor, spare us from all harm during this hurricane season; and protect us and our homes from all disasters of nature. Our Lady of Prompt Succor, hasten to help us. AMEN



**Feast Day—August 15**

This feast celebrates a special privilege of Mary, our Mother. When her life on earth was over, Mary was assumed, or taken up, into the glory of heaven—not only with her soul, but also with her body. The Son of God began his human life in Mary's pure

womb. It was fitting, then, that her body should be glorified by God as soon as her life here on earth was ended. Now Mary is in heaven. She is Queen of Heaven and Earth. She is the Mother of Jesus' Church. Every time Mary asks Jesus to give us graces, he listens to her request. After the resurrection from the dead, our bodies, too, will share in our heavenly reward. After the resurrection, our bodies will be perfect. They will no longer be subject to illness. They will not need food and drink to keep alive. They will not get tired. They will be able to go every place without time or effort. They will be beautiful and splendid! Mary's Assumption, body and soul into heaven, is a Church teaching. This wonderful truth was proclaimed by Pope Pius XII on November 1, 1950.

*It's so wonderful to remember that Mary is our Mother in heaven. She really does love us. She's there for us whenever we call to her in prayer. She wants to help us so that when our life is ended, we too will enjoy the happiness of heaven. We can pray the Hail Mary often throughout the day.*

**Church Financials  
Year to Date through May 31, 2025**

	Operating	Maintenance	Total Before CC	Cap. Campaign	Total
Income before Fair, Maint. & Capital	525,673		525,673		525,673
Fair Proceeds	91,000		91,000		91,000
Maintenance Monthly Collections		55,821	55,821		55,821
Capital Campaign Collections				34,253	34,253
Expenses	(626,072)	(53,859)	(679,931)	(306,137)	(986,068)
<b>Total YTD Actuals</b>	<b>\$ (9,399)</b>	<b>\$ 1,962</b>	<b>\$ (7,437)</b>	<b>\$ (271,884)</b>	<b>\$ (279,321)</b>



*Thank you to our parish family members who faithfully support our parish. May God bless you for your generosity!*

Online Giving Is Available on Our Website at [www.olphbc.org](http://www.olphbc.org) (click on Give Online), or simply scan the QR code with your phone. You can easily create your donation account online and make changes at any time.







## Straight Talk

by: Father William Maestri

### Welcome HOME!

A familiar piece of conventional wisdom concerns assumptions. Simply put - DON'T MAKE 'EM! Most often these leaps of judgement and conclusion turn out to be WRONG. The result of such rashness ranges from personal embracement and the need to make the dreaded apology to the loss of a valued friend, loved one, or a law suit for defamation of character. Such is not the case when it comes to the Assumption of the Blessed Mother, one of the revered Glorious Mystery of the Rosary.

To acquire some appreciation of the Assumption requires an understanding of its connection to the WHOLE of Mary's life, and how it relates to our daily pilgrimage and final destination. For the Assumption is one of these workings of God which requires we LOOK BACKWARD in order to appreciate the present and future.

St. Paul writes: "the wages of sin is death" (Rom 6:23). The word 'sin', from the Greek *hamartia*, means to "miss the mark", "to fail in one's purpose". Biblically, to sin means to fail in our vocation, to miss the target of our fulfillment as image of God, that is to seek created things more earnestly than God (Creator). The result is death, spiritually and physically (the consequence of Original Sin, Gen 3).

Original Sin is NOT a personal sin but one we INHERIT as the offspring of our first parents (Catechism of the Catholic Church, Nos. 397-406; Rom 5:12-19; 8:21). The wound of the first sin results in the immediate loss of "the grace of original holiness." (CCC, No. 399). Subsequently, "The harmony in which they had found themselves, thanks to original justice," is now DEPRIVED but NOT DEPRAVED; a darkened intellect and a weakened will. Human existence post - Eden, is one of struggle against ignorance and "concupiscence", the attraction to evil (CCC, No. 405). This deprivation affects human nature and accounts for our PERSONAL SINS for which we are responsible (CCC, No. 405).

Humanity was expelled in justice, offending God, but NOT ABANDONED because of God's mercy. Satan will not have the last word. God's loving forgiveness will triumph with the sending of a Savior (Gen 3:9,15) to reconcile God and humanity. (CCC, Nos. 410-12). St. Thomas Aquinas wrote: "Christ's inexpressible grace gave us blessings better than those the demon's envy had taken away." (*Summa Theologica*, III, 1, 3, ad 3; Rom 5: 20).

How would this reconciliation occur? In the most extraordinary way: "And the Word became flesh" (Jn 1:14). Since sin was an offense against God, and it was committed by the parents of humanity (Gen 3:20), the reparation must be accomplished through an offer that joins Divinity and Humanity. In Jesus, the God-Man, the breach is healed.

The God component would be through Jesus, the Son of God, and Mary in accordance with the prophet Isaiah: "Behold, the virgin shall be with child and bear a son, and they shall name him Emmanuel which means 'God is with us' ". (Isa 7:14; Mt 1:22-23).

Why Mary? The angel Gabriel greets Mary with, "Hail, favored one! [Mary is full of grace both physically (virgin) and spiritually (conception is through the Holy Spirit, the Divine Sanctifier)]" (Lk 1:26-38). This "favored" state of grace, this total purity, includes the ABSENCE of Original Sin. This DIVINE DISPENSATION, "full of grace through God, was redeemed from the moment of her conception", was formalized with the dogma of the Immaculate Conception by Pope Pius IX in 1854. (CCC, No. 491; *Ineffabilis Deus*). Mary's Immaculate Conception is NOT confined to her conception but "By the grace of God Mary remained free of every personal sin her whole life long." (CCC, No.493).

The Blessed Mother by the grace of God, was without Original and personal sin, hence she was NOT subject to sin's punishment - PHYSICAL and SPIRITUAL death. Pope Pius XII writes: "when the course of her earthly life was finished, [she] was taken up body and soul into heavenly glory...so that she might be the more fully conformed to her Son...conqueror of sin and death." (*Munificentissimus Deus* (1950), DS 3903; Rev. 19:16).

Mary's Assumption reveals to us a magnificent Sign of Hope down through the ages. We are invited to PARTICIPATE in the "great things" God has done in Mary. For she is the Mother of the Redeemer, and by her ongoing prayers is OUR Heavenly Mother. Mary's Assumption is also her participation in the Resurrection "and an anticipation of the resurrection of other Christians" (CCC, No. 966).

In our earthly journey of blessings and burdens, crosses and crowns, "she shines forth on earth, until the day of the Lord shall come, a sign of certain hope and comfort to the pilgrim People of God." (*Lumen gentium* 68; CF. 2Pet 3:10).



**504-392-0554**



PHONE: (504) 564-3344  
FAX: (504) 564-0174  
27136 HIGHWAY 23, PORT SULPHUR, LA 70083



Six Generations of Our Family Serving Your Family Since 1895  
Planning TODAY to Help Your Family TOMORROW...  
For more information call (504) 366-4343.  
www.mothefunerals.com

1 Get this bulletin emailed to you every week.

Simply go to  
www.DM.CHURCH/5049...or scan



DISCOVERMASS



Brent & Kathy Laliberte, Owners  
1700 Belle Chasse Hwy., Ste. A #200 393-0315



FATHER PETER P. BOERDING COUNCIL No. 6357  
For Membership Call Rodney Schaubhut, Sr., GK  
RodSchaubhut@gmail.com • 504-376-3080  
Meetings 2<sup>nd</sup> Wed. Each Month 7:00 pm  
Council Home



Gerard Robertson, Jr., Estimator  
900 Woodland Hwy. • 504-394-7200  
gerardjr@robertsonroofinginc.com

**ADVERTISE HERE**

Promote your Business AND support your Parish.

Ray Kelly - 504-338-3058  
rkelly@diocesan.com



PLUMBING + MECHANICAL + CONSTRUCTION  
Greg West 504-382-0973

View this bulletin online at [www.DiscoverMass.com](http://www.DiscoverMass.com)



**RUSO'S PHARMACY** Sean & Jenny Surrency Owners  
Fast Friendly Service  
Good Neighbor Pharmacy  
M-F 8am-6pm  
Sat. 9am-2pm  
7902 Hwy. 23  
**394-4444** www.mynpn.com/russospharmacy

**BELLE CHASSE VETERINARY CLINIC, INC.**  
Dr. C. Duplechain  
**394-4516**  
8566 HWY. 23

**Salvo's SEAFOOD** Est. 1984  
Open on Sundays from January to mid May  
Dine In or Take Out • Fresh & Boiled  
7742 Hwy 23 • **504-393-7303**  
www.salvosseafood.com

**Belle Chasse Cabinet Works**  
Custom Cabinetry & Design  
www.bccw.net  
**394-4870**  
1500 WOODLAND HWY.

**CLEAN FLEET** AUTO BODY WEST  
Metro New Orleans most recommended shop is now in Belle Chasse  
Formerly JP's Auto Body, JP and Susan finally retired, however the rest of the team is still the same.  
7248 Highway 23  
Belle Chasse LA 70037 **504-394-6767**

**Chevron** **Guilbeau's Convenience Store & Deli**  
Port Sulphur, LA

**GOURMET BUTCHER BLOCK**

**DEBONED CHICKEN & TURKEY & PRESEASONED MEATS**  
*A Cajun Meat Market*  
Turducken • Deboned Stuffed Chicken  
Deboned Stuffed Turkey  
Homemade Boudin • Stuffed Pork Chops  
Stuffed Duck • Stuffed Quail  
Stuffed Rabbit • Shish Kabobs  
Stuffed Pork Roast • Stuffed Beef Roast  
Stuffed Boneless Pork Loin • Stuffed Brisket  
**Glenn & Leah Mistich, Owners**  
**392-5700**  
2144 Belle Chasse Hwy., Gretna

**PIVACH**  
— attorneys at law —  
BELLE CHASSE COVINGTON  
504-394-1870  
www.pivachlaw.com

**R.R.T.**  
Oilfield Rentals & Service  
Locations in Belle Chasse & Lafayette  
Telephone: **800-500-6670**

**C&C Machine**  
504-362-7205  
www.ccmachineshop.com

**BEZ OYSTERS and SEAFOOD**  
9582 Highway 23  
Belle Chasse, LA 70037  
**504-394-0903**  
Nick Bezmalinovic (Owner)

**Mississippi River**  
Division of Merchants & Marine Bank  
**504-392-1111**

**EMILY LACOUR, DDS**  
(504) 433-2092  
27136 Highway 23, Suite 414  
Port Sulphur, LA 70083  
OFFICE HOURS:  
Monday and Friday 8am-5pm  
Tuesday, Wednesday & Thursday 8am-3pm

**Fremin's** Food Market  
Mon-Sat: 7AM to 7PM  
Sun: 8AM to 12PM  
26277 Hwy 23  
Port Sulphur, LA

**Riverbend**  
Nursing & Rehabilitation Center  
Quality Care - Close to Home  
13735 Hwy. 23 **656-0068**

**BP&P**  
BOWES, PETKOVICH & PALMER, LLC  
504-368-2700  
BPP-LAW.COM

**COLDWELL BANKER** TEC  
**THE BONNIE BURAS TEAM**  
Bonnie Buras & Emily B. Hoskin  
504.392.0022  
BonnieBurasTeam@gmail.com  
Each Office Independently Owned & Operated. Licensed in LA.

**Edward Jones**  
JEFF WOOTON, FINANCIAL ADVISOR  
7614 Hwy. 23, Ste. A  
Belle Chasse, LA 70037  
Bus. 504-392-3977 • TF 844-258-7762  
Cell 504-289-3271 • Fax 855-379-5740  
edwardjones.com/jeff-wooton  
jeff.wooton@edwardjones.com

**Holiday Inn Express**  
AN IHG® HOTEL  
2433 Manhattan Blvd. • Harvey, LA

**State Oil Fuel Center**  
FAMILY-OWNED & OPERATED SINCE 1997  
We served you through hurricanes, fuel shortage, fires, & holidays.  
We Are Here For You 24 hours a day. 365 days a year.  
Plaquemines Owned Plaquemines Proud

**RIVERSIDE HOTEL**  
www.RiversideBelleChasse.com  
8280 Hwy. 23 **391-0133**

**catholicmatch Louisiana**  
CatholicMatch.com/goLA

**Adams Catfish House**  
LUNCH MON-FRI 11-2  
& DINNER THURS-SAT 5-9  
8523 Hwy. 23 **392-0541**  
**ROUBION'S TIRE & AUTO CENTER, INC.**  
Front End Alignment • AC Repair  
Oil Change & Brake Tags  
**BRIDGESTONE MICHELIN**  
**GOOD YEAR**  
7566 Hwy. 23 **392-8861**

**INSTEP CREDIT UNION**  
Guiding our communities to bold new financial horizons since 1948  
504-394-5574  
instepmembers.com

**BBC** BALLAY, BRAUD & COLON, PLC  
ATTORNEYS AT LAW  
EST. 1980  
504.394.9841  
8114 Hwy. 23 Belle Chasse, LA 70037

